

8

7

6

5

4

3

2

1

D

D

C

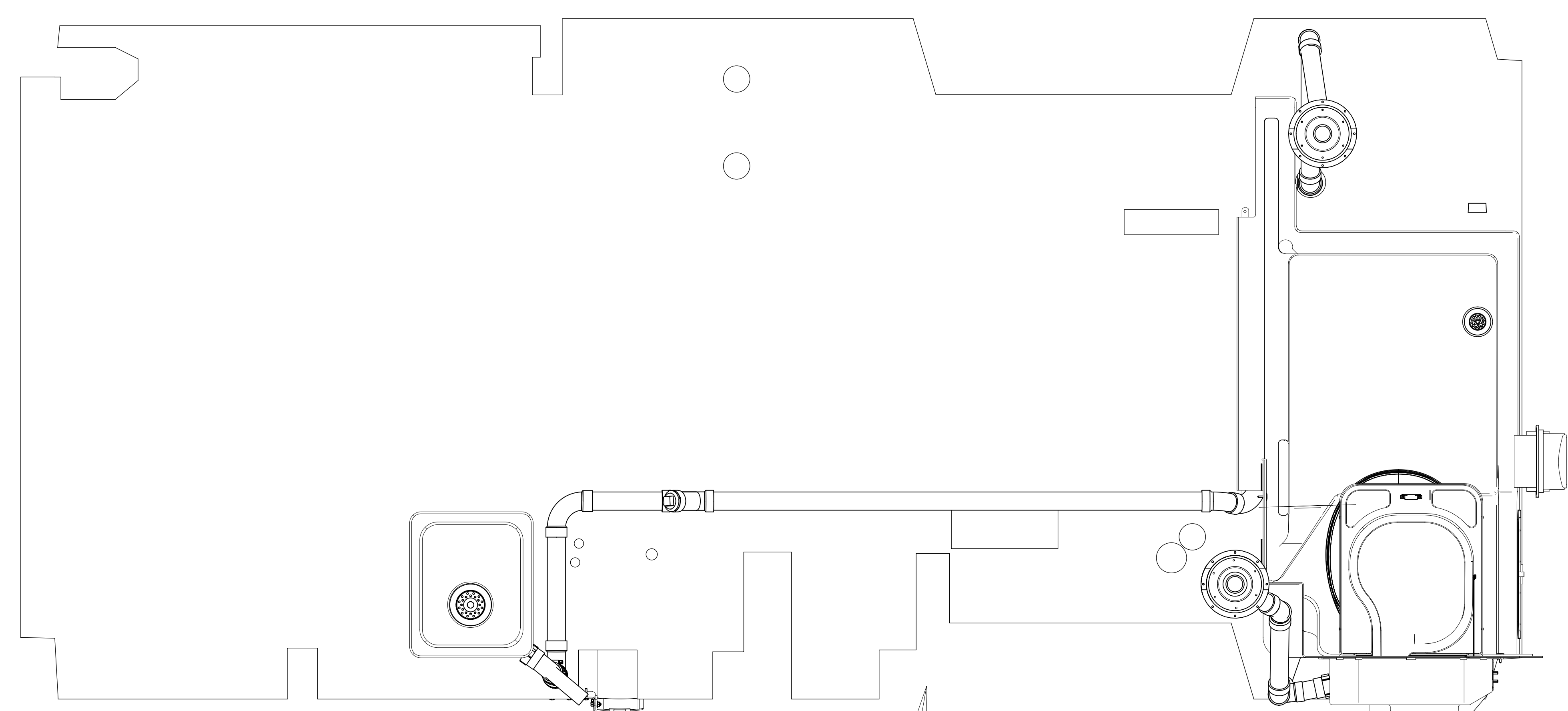
C

B

B

A

A



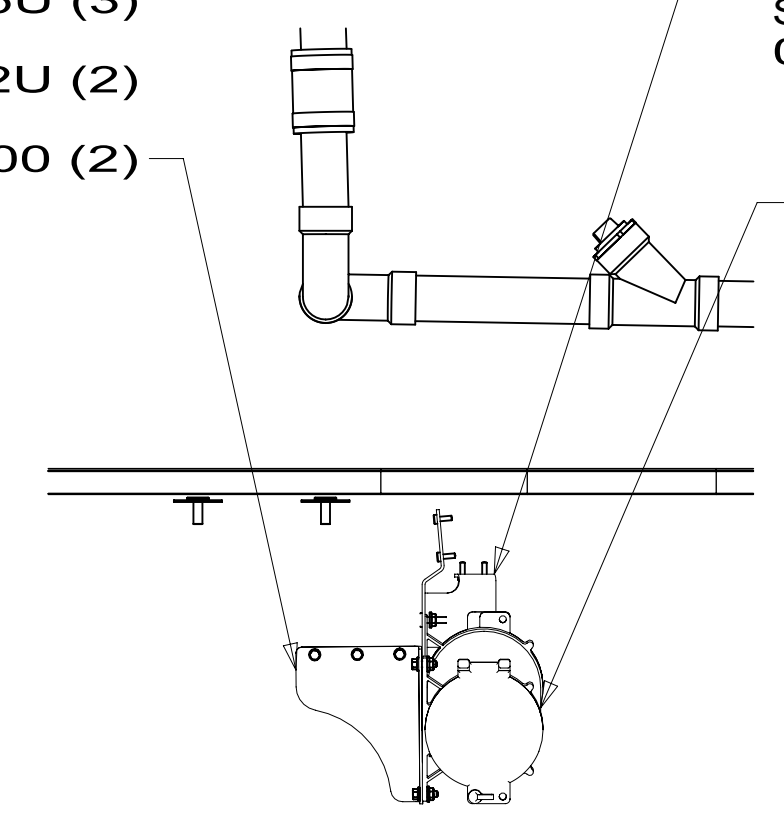
- 12. APPLY SEALANT TO THE BOTTOM OF SHOWER PAN IN A ZIG-ZAG PATTERN
- 11. ATTACH SEAL TO BRACE WHERE IT CONTACTS HEATER PAD.
- 10. PREP THE SURFACE PER MANUFACTURERS INSTRUCTIONS BEFORE APPLYING THE HEATING PAD.
- 9. SEE WIRING INSTL-BODY FOR ELECTRICAL CONNECTIONS.
- 8. NIPPLE TO BE TRIMMED TO LENGTH ON INSTALL.
- 7. SECURE VENT PIPE WITH CLAMP 000156237 / 326663-02-000.
- 6. VENT PIPE MUST PROJECT 51 MIN AND 64 MAX ABOVE ROOF FOR PROPER FIT AND FUNCTION.
- 5. SEAL AROUND SHOWER WITH SILICONE.
- 4. SECURE DRAINAGE PIPES TO CABINET USING WIRE TIE 108046-02-000, AND SCREW 000G67-10-12U AT INTERVALS OF NOT MORE THAN 4 FEET APART.
- 3. ALL PIPE AND FITTINGS TO BE ASSEMBLED WITH SOLVENT 004020-01-000 (USA), 004020-02-000 (CAN)
- 2. SLOPE OF TRAP ARM MUST BE 6 PER 305 mm.
- 1. SLOPE OF HORIZONTAL PIPING TO BE MINIMUM OF 3 PER 305 mm.

NOTES:

BRACKET-SEWER HOSE
000226129 / 343935-01-CHT
SCREW
000G42-04-16U (3)
BOLT
000C26-04-12U (2)
NUT
000D39-04-000 (2)

BRACKET ASM-SEWER HOSE
000226150 / 343944-01-CHT
NUT
000D39-04-000 (2)
SCREW
000G39-10-10U (6)

COMPT ASM-SEWER HOSE, STORAGE
000121940 / 323180-01-CHT



VIEW AA

FOR DRAINAGE CALLOUTS SEE DWG NO. 000211962 / 303370-01-000

23T DRAINAGE SYSTEM-HEATED



DSNR:		ALL DIMENSIONS ARE IN MILLIMETERS	
DIFTR:		MATERIAL:	
UNSPECIFIED TOLERANCES:			
WHOLE DIM (X)	: 3		
ONE-PLACE (X.X)	: 1.5		
TWO-PLACE (X.XX)	: 0.50		
ANGLE	: 1°		
REFER TO ES0018 FOR FASTENER TIGHTENING GUIDELINES		WEIGHT: (LBS)	FIRST USED: (REF)
			21 259KL
DESCRIPTION: DRAINAGE SYSTEM INSTL			
SHEET:	ITEM/PART NO.:	REV	
1 OF 4	000210415 / 33991001000		

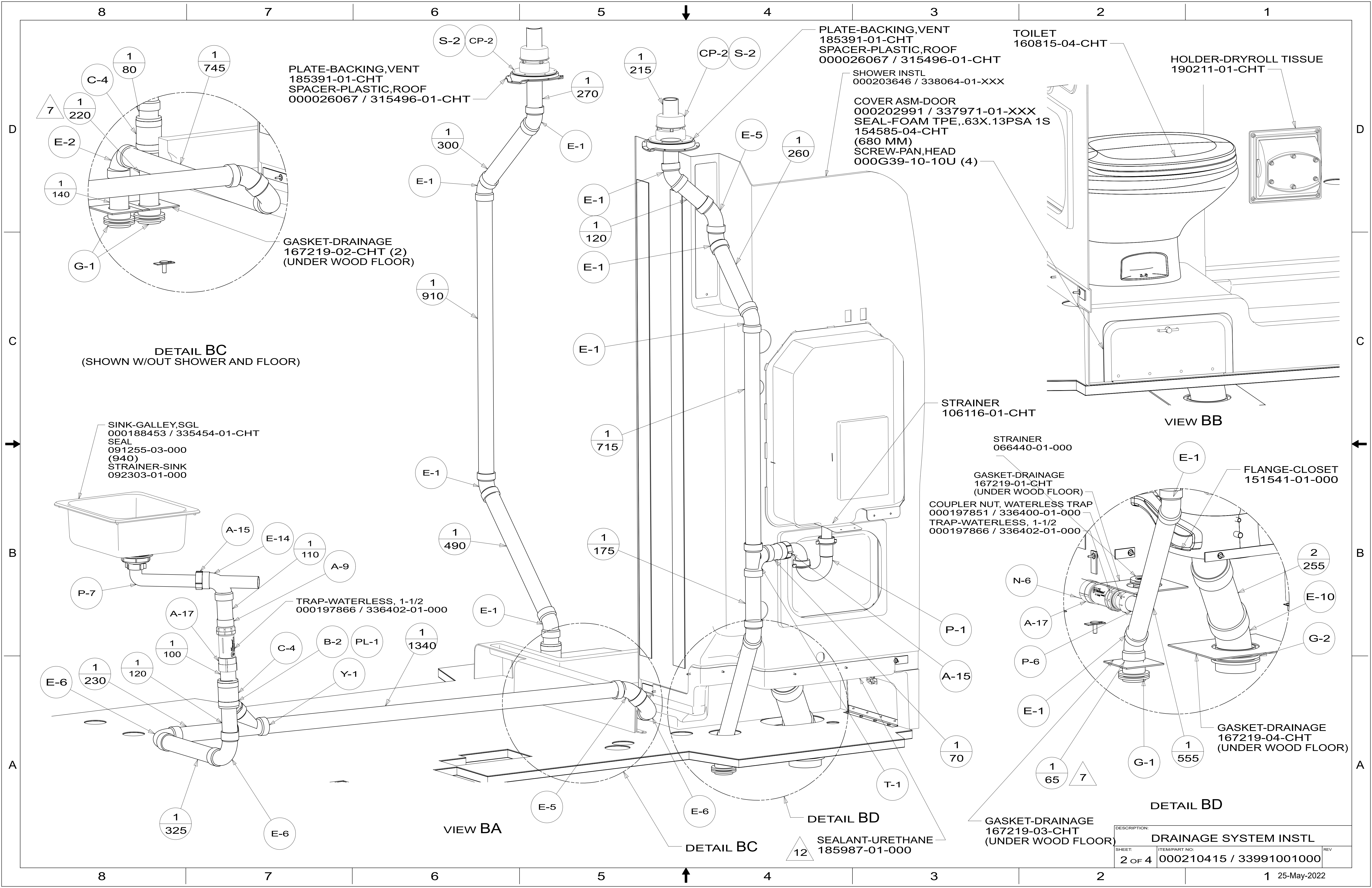


PLATE-BACKING, VENT
185391-01-CHT
SPACER-PLASTIC, ROOF
000026067 / 315496-01-CHT

PLATE-BACKING, VENT
185391-01-CHT
SPACER-PLASTIC, ROOF
000026067 / 315496-01-CHT

TOILET
160815-04-CHT

HOLDER-DRYROLL TISSUE
190211-01-CHT

SHOWER INSTL
000203646 / 338064-01-XXX

COVER ASM-DOOR
000202991 / 337971-01-XXX
SEAL-FOAM TPE, .63X.13PSA 1S
154585-04-CHT
(680 MM)
SCREW-PAN, HEAD
000G39-10-10U (4)

GASKET-DRAINAGE
167219-02-CHT (2)
(UNDER WOOD FLOOR)

DETAIL BC
(SHOWN W/OUT SHOWER AND FLOOR)

SINK-GALLEY, SGL
000188453 / 335454-01-CHT
SEAL
091255-03-000
(940)
STRAINER-SINK
092303-01-000

STRAINER
106116-01-CHT

VIEW BB

STRAINER
066440-01-000

GASKET-DRAINAGE
167219-01-CHT
(UNDER WOOD FLOOR)

COUPLER NUT, WATERLESS TRAP
000197851 / 336400-01-000
TRAP-WATERLESS, 1-1/2
000197866 / 336402-01-000

FLANGE-CLOSET
151541-01-000

TRAP-WATERLESS, 1-1/2
000197866 / 336402-01-000

GASKET-DRAINAGE
167219-04-CHT
(UNDER WOOD FLOOR)

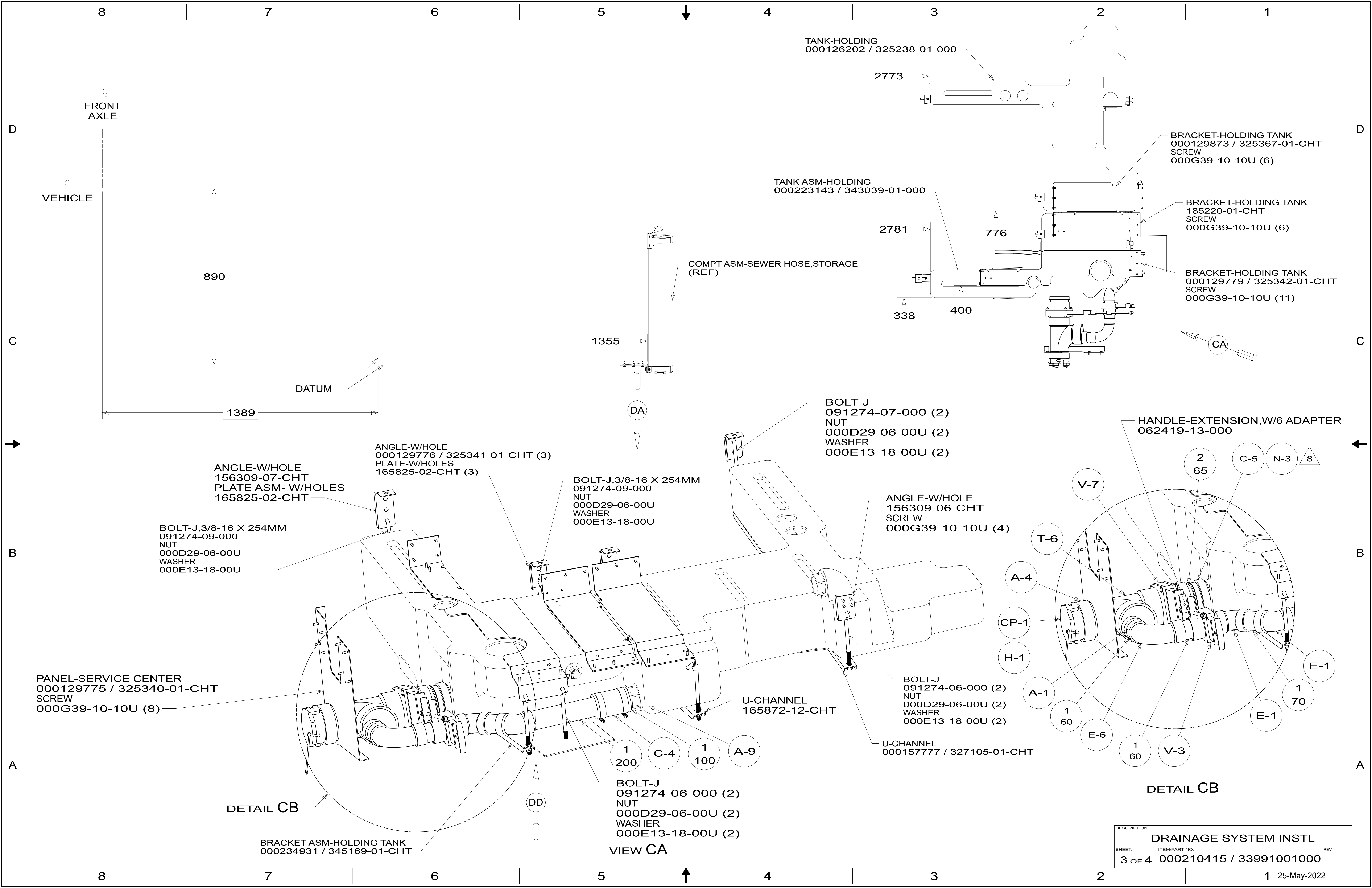
DETAIL BD

GASKET-DRAINAGE
167219-03-CHT
(UNDER WOOD FLOOR)

DETAIL BC

SEALANT-URETHANE
185987-01-000

DESCRIPTION: DRAINAGE SYSTEM INSTL		
SHEET: 2 OF 4	ITEM/PART NO: 000210415 / 33991001000	REV



TANK-HOLDING
000126202 / 325238-01-000

TANK ASM-HOLDING
000223143 / 343039-01-000

BRACKET-HOLDING TANK
000129873 / 325367-01-CHT
SCREW
000G39-10-10U (6)

BRACKET-HOLDING TANK
185220-01-CHT
SCREW
000G39-10-10U (6)

BRACKET-HOLDING TANK
000129779 / 325342-01-CHT
SCREW
000G39-10-10U (11)

COMPT ASM-SEWER HOSE, STORAGE
(REF)

CA

DA

HANDLE-EXTENSION, W/6 ADAPTER
062419-13-000

BOLT-J
091274-07-000 (2)
NUT
000D29-06-00U (2)
WASHER
000E13-18-00U (2)

ANGLE-W/HOLE
156309-06-CHT
SCREW
000G39-10-10U (4)

BOLT-J, 3/8-16 X 254MM
091274-09-000
NUT
000D29-06-00U
WASHER
000E13-18-00U

ANGLE-W/HOLE
000129776 / 325341-01-CHT (3)
PLATE-W/HOLES
165825-02-CHT (3)

ANGLE-W/HOLE
156309-07-CHT
PLATE ASM- W/HOLES
165825-02-CHT

BOLT-J, 3/8-16 X 254MM
091274-09-000
NUT
000D29-06-00U
WASHER
000E13-18-00U

BOLT-J
091274-06-000 (2)
NUT
000D29-06-00U (2)
WASHER
000E13-18-00U (2)

U-CHANNEL
000157777 / 327105-01-CHT

U-CHANNEL
165872-12-CHT

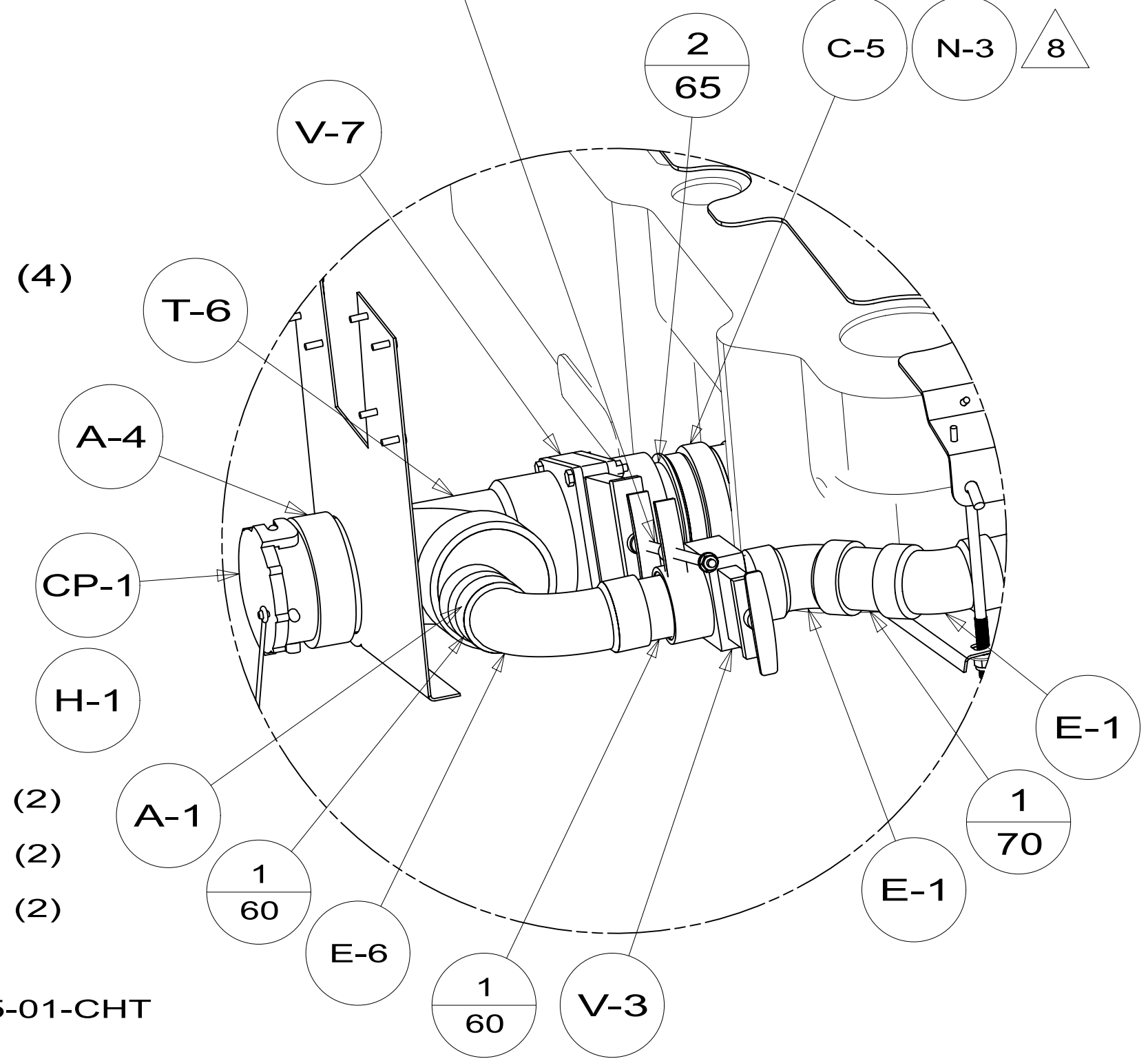
BOLT-J
091274-06-000 (2)
NUT
000D29-06-00U (2)
WASHER
000E13-18-00U (2)

VIEW CA

PANEL-SERVICE CENTER
000129775 / 325340-01-CHT
SCREW
000G39-10-10U (8)

DETAIL CB

BRACKET ASM-HOLDING TANK
000234931 / 345169-01-CHT



DETAIL CB

DESCRIPTION:		
DRAINAGE SYSTEM INSTL		
SHEET:	ITEM/PART NO.:	REV
3 OF 4	000210415 / 33991001000	

