

8

7

6

5

4

3

2

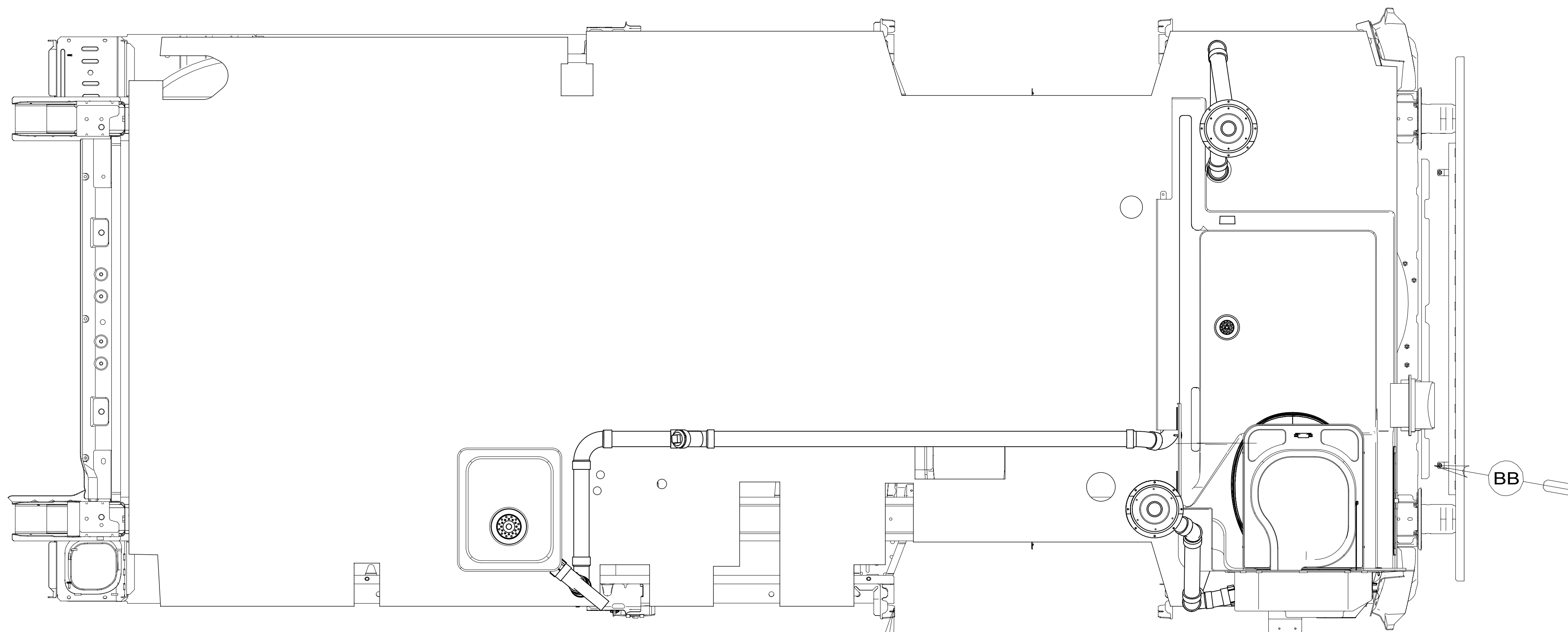
1

BRACKET-SEWER HOSE
 000226129 / 343935-01-CHT
 SCREW
 000G42-04-16U (3)
 BOLT
 000C26-04-12U (2)
 NUT
 000D39-04-000 (2)

BRACKET ASM
 000226150 / 343944-01-CHT
 NUT
 000D39-04-000 (2)
 SCREW
 000G39-10-10U (6)

COMPT ASM-SEWER HOSE, STORAGE
 000121940 / 323180-01-CHT

VIEW AA



- 13. CUT TO FIT.
- 12. APPLY SEALANT TO THE BOTTOM OF SHOWER PAN IN A ZIG-ZAG PATTERN
- 11. ATTACH SEAL TO BRACE WHERE IT CONTACTS HEATER PAD.
- 10. PREP THE SURFACE PER MANUFACTURERS INSTRUCTIONS BEFORE APPLYING THE HEATING PAD.
- 9. SEE WIRING INSTL-BODY FOR ELECTRICAL CONNECTIONS.
- 8. NIPPLE TO BE TRIMMED TO LENGTH ON INSTALL.
- 7. SECURE VENT PIPE WITH CLAMP 000156237 / 326663-02-000.
- 6. VENT PIPE MUST PROJECT 51 MIN AND 64 MAX ABOVE ROOF FOR PROPER FIT AND FUNCTION.
- 5. SEAL AROUND SHOWER WITH SILICONE.
- 4. SECURE DRAINAGE PIPES TO CABINET USING WIRE TIE 108046-02-000, AND SCREW 000G67-10-12U AT INTERVALS OF NOT MORE THAN 4 FEET APART.
- 3. ALL PIPE AND FITTINGS TO BE ASSEMBLED WITH SOLVENT 004020-01-000 (USA), 004020-02-000 (CAN)
- 2. SLOPE OF TRAP ARM MUST BE 6 PER 305 mm.
- 1. SLOPE OF HORIZONTAL PIPING TO BE MINIMUM OF 3 PER 305 mm.

NOTES:

AA

BA

BB

23T DRAINAGE SYSTEM-HEATED



DSNR:		ALL DIMENSIONS ARE IN MILLIMETERS	
DFT:		MATERIAL:	
UNSPECIFIED TOLERANCES:			
WHOLE DIM (X)	± 3		
ONE-PLACE (X.X)	± 1.5		
TWO-PLACE (X.XX)	± 0.50		
ANGLE	± 1°		
REFER TO ES0018 FOR FASTENER TIGHTENING GUIDELINES		WEIGHT: (LBS)	FIRST USED: (REF)
			21 259K
DESCRIPTION: DRAINAGE SYSTEM INSTL			
SHEET:	ITEM/PART NO.:	REV	
1 OF 4	000202957 / 33896101000		

FOR DRAINAGE CALLOUTS SEE DWG NO. 000211962 / 303370-01-000

8

7

6

5

4

3

2

1

24-Jan-2024

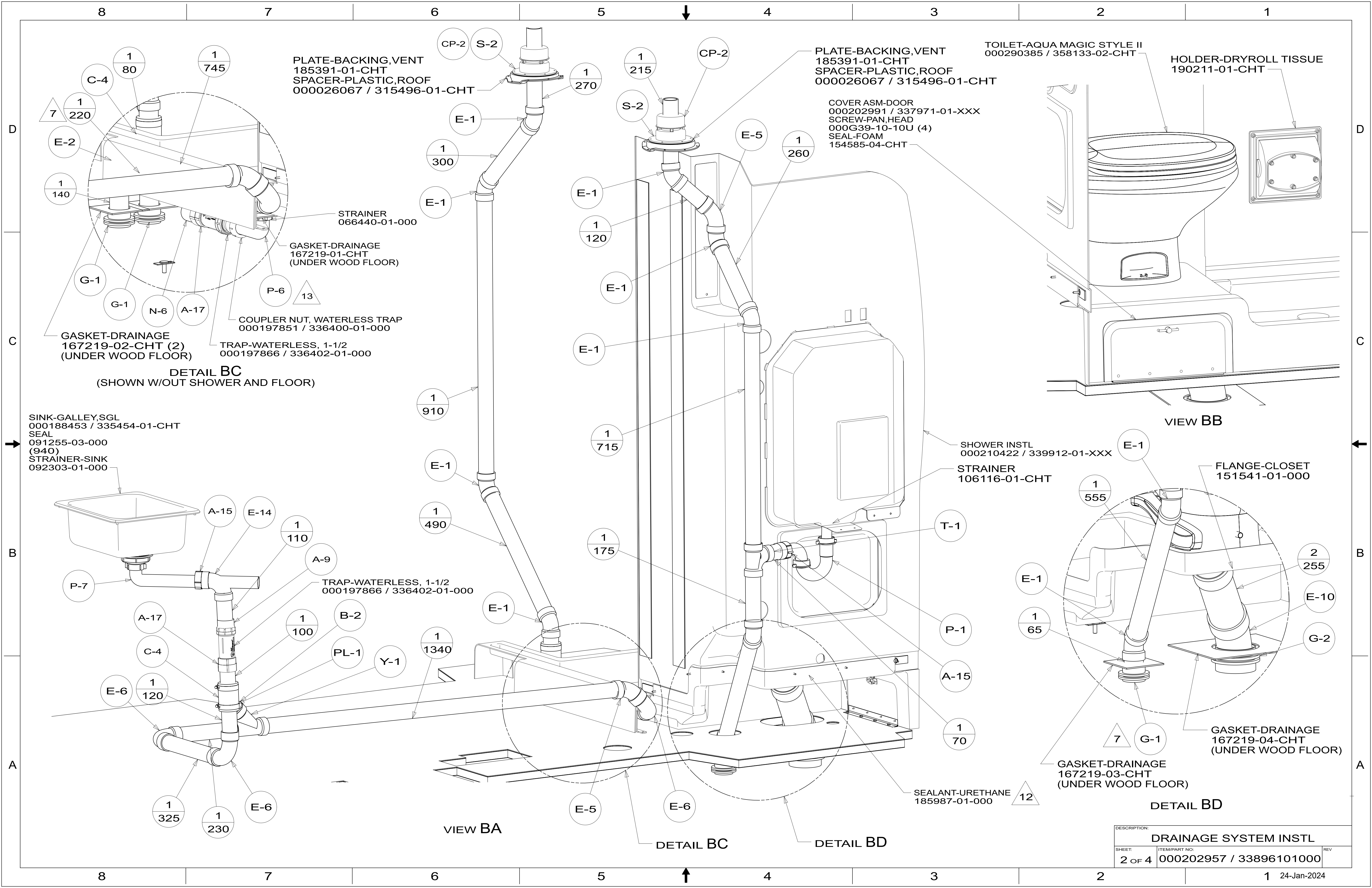


PLATE-BACKING, VENT
185391-01-CHT
SPACER-PLASTIC, ROOF
000026067 / 315496-01-CHT

PLATE-BACKING, VENT
185391-01-CHT
SPACER-PLASTIC, ROOF
000026067 / 315496-01-CHT

TOILET-AQUA MAGIC STYLE II
000290385 / 358133-02-CHT

HOLDER-DRYROLL TISSUE
190211-01-CHT

COVER ASM-DOOR
000202991 / 337971-01-XXX
SCREW-PAN, HEAD
000G39-10-10U (4)
SEAL-FOAM
154585-04-CHT

STRAINER
066440-01-000

GASKET-DRAINAGE
167219-01-CHT
(UNDER WOOD FLOOR)

COUPLER NUT, WATERLESS TRAP
000197851 / 336400-01-000

GASKET-DRAINAGE
167219-02-CHT (2)
(UNDER WOOD FLOOR)

TRAP-WATERLESS, 1-1/2
000197866 / 336402-01-000

DETAIL BC
(SHOWN W/OUT SHOWER AND FLOOR)

SINK-GALLEY, SGL
000188453 / 335454-01-CHT
SEAL
091255-03-000
(940)
STRAINER-SINK
092303-01-000

TRAP-WATERLESS, 1-1/2
000197866 / 336402-01-000

SHOWER INSTL
000210422 / 339912-01-XXX

STRAINER
106116-01-CHT

FLANGE-CLOSET
151541-01-000

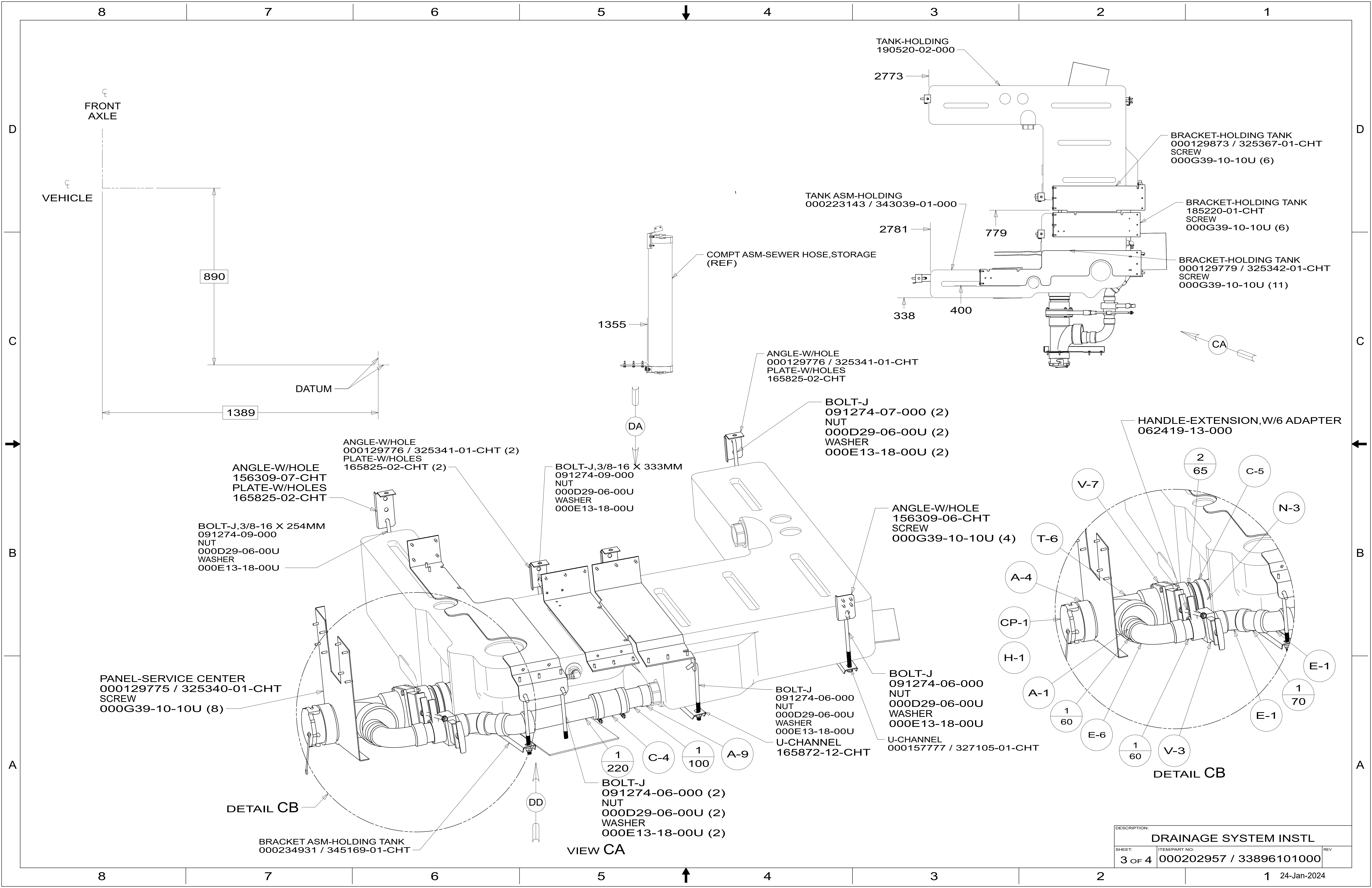
SEALANT-URETHANE
185987-01-000

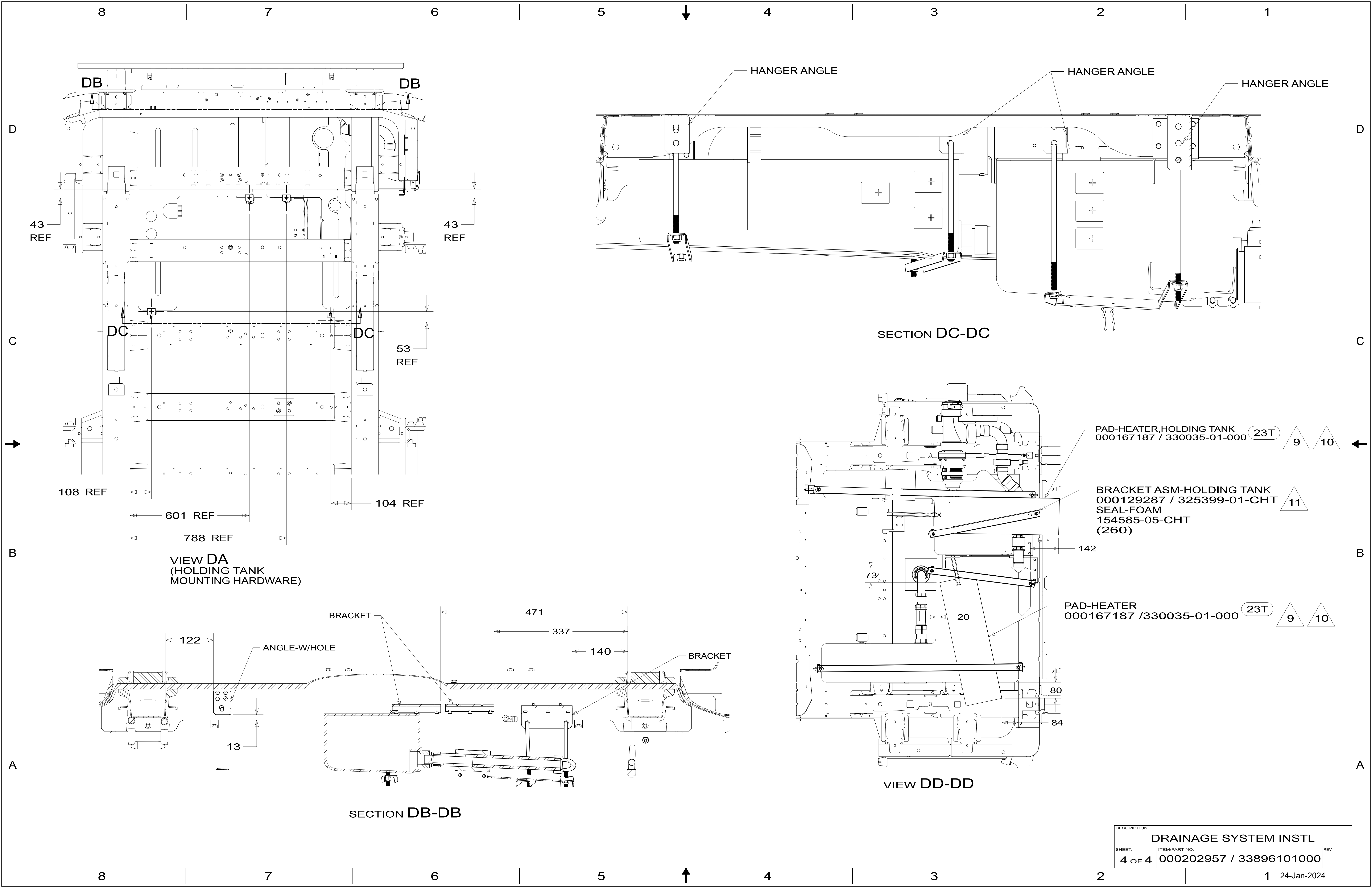
GASKET-DRAINAGE
167219-04-CHT
(UNDER WOOD FLOOR)

GASKET-DRAINAGE
167219-03-CHT
(UNDER WOOD FLOOR)

DETAIL BD

DESCRIPTION: DRAINAGE SYSTEM INSTL		
SHEET: 2 OF 4	ITEM/PART NO: 000202957 / 33896101000	REV





DESCRIPTION:		
DRAINAGE SYSTEM INSTL		
SHEET:	ITEM/PART NO.:	REV
4 OF 4	000202957 / 33896101000	