

- CIRCUIT BREAKER-6 AMP
93654-01-000
SCREW
G52-06-04U
G52-06-05U
SPACER-CIRCUIT BREAKER
141789-01-000
- CIRCUIT BREAKER-6 AMP
93654-03-000
SCREW
G52-06-04U
G52-06-05U
SPACER-CIRCUIT BREAKER
141789-01-000
- CIRCUIT BREAKER-15 AMP
93654-02-000
SCREW
G52-06-05U
SPACER-CIRCUIT BREAKER
141789-01-000
- CIRCUIT BREAKER-30 AMP
93655-02-000
SPACER-CIRCUIT BREAKER
141789-01-000
SCREW
G52-06-04U (2)
- CIRCUIT BREAKER-30 AMP
93655-02-000
SPACER-CIRCUIT BREAKER
141789-01-000
SCREW
G52-06-05U (2)
- CIRCUIT BREAKER-40 AMP
093655-03-000
SCREW
G19-10-08U
- CIRCUIT BREAKER-55 AMP
113482-01-000
SCREW
G19-10-08U
- CIRCUIT BREAKER-55 AMP
113482-01-000
SCREW
G19-10-08U

- LABEL-CIRCUIT BREAKER
93236-53-000
- PLATE-CIRCUIT BREAKER
000019322 / 313830-01-CHT
SCREW
G39-08-089 (2)

2 USE THE LONGER SCREW TO PROPERLY ATTACH BREAKER TO BUSS BAR.
1 REPLACE EXISTING SCREW TO PROPERLY ATTACH BREAKER TO BUSS BAR.

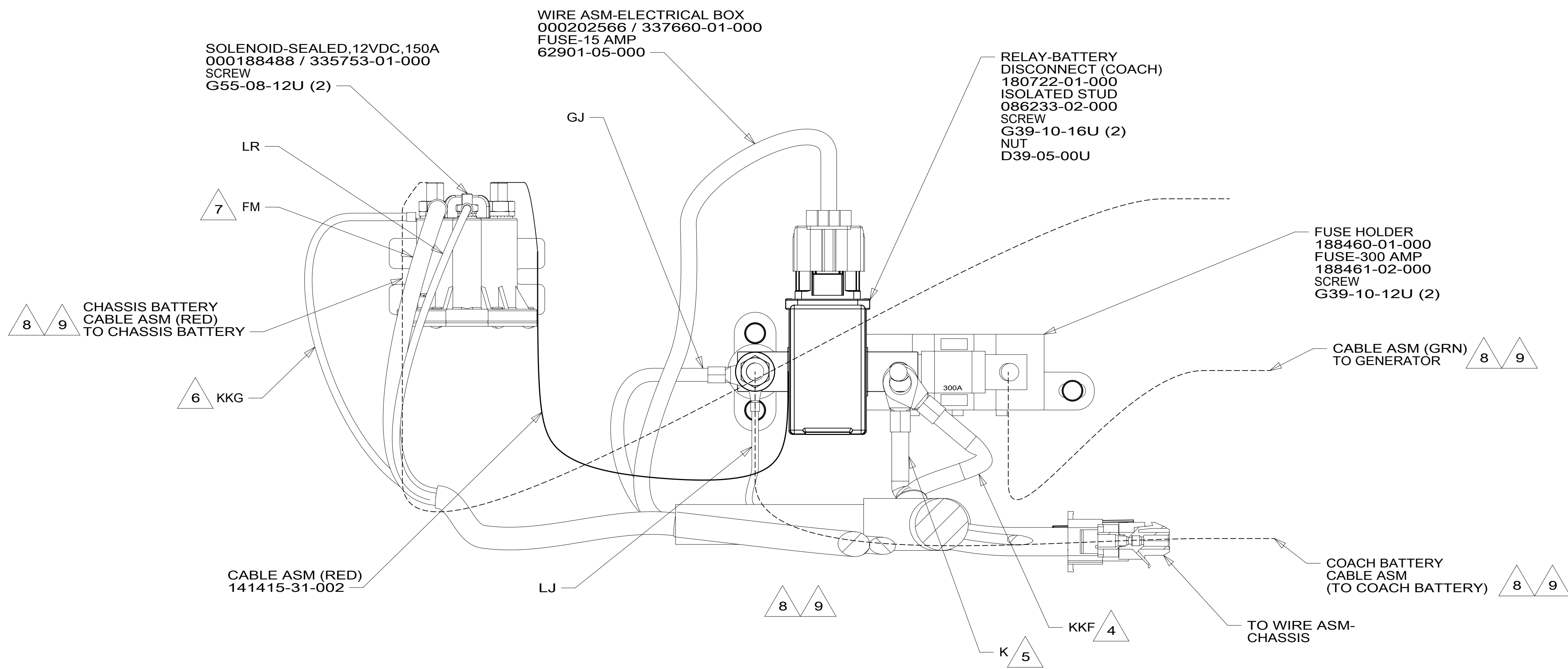
FOR ELECTRICAL TORQUE SPECIFICATIONS SEE DWG NO. 128783-01-000

X-X FOR ELECTRICAL CALLOUTS SEE DWG NO. 121339-01-000

- 265 CODES/STANDARDS-CSA/CMVSS
- 1B1 CODES/STANDARDS USA
- 1B1 265

WINNEBAGO
COPYRIGHT 2016 WINNEBAGO INDUSTRIES, INC.

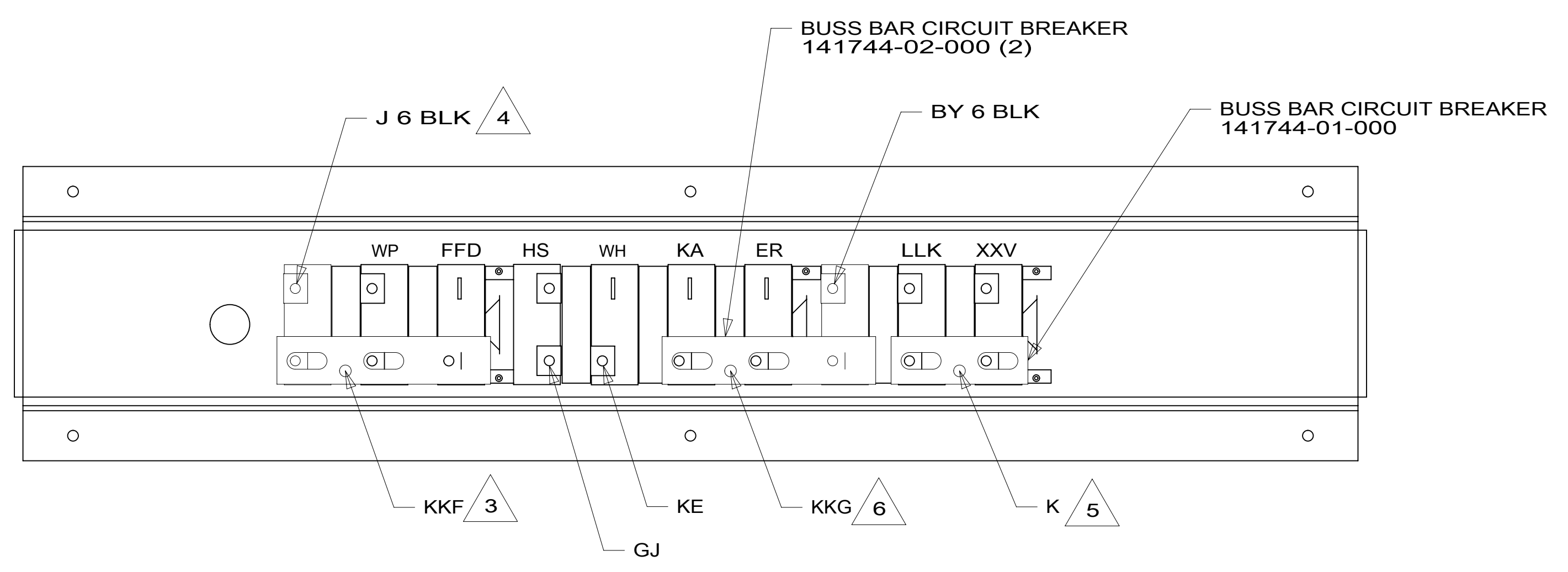
DSNR:	ALL DIMENSIONS ARE IN MILLIMETERS
DIFFR:	
UNSPECIFIED TOLERANCES:	MATERIAL:
WHOLE DIM (X) : 3	
ONE-PLACE (X.X) : 1.5	
TWO-PLACE (X.XX) : 0.50	
ANGLE : 1°	
REFER TO ES0018 FOR FASTENER TIGHTENING GUIDELINES	WEIGHT: (LBS) FIRST USED: 21 E-SER
DESCRIPTION: CHASSIS ELECTRICAL BOX ASM	
SHEET: 1 OF 2	ITEM/PART NO: 000202565 / 33765901000



- 9 SEE BATTERY INSTL FOR ADDITIONAL INFORMATION.
- 8 SEE WIRING INSTL-CHASSIS FOR ADDITIONAL INFORMATION.
- 7 SECURE WITH SOLENOID MOUNTING SCREW.
- 6 WIRE MARKED WITH RED TAPE.
- 5 WIRE MARKED WITH PURPLE TAPE.
- 4 WIRE MARKED WITH YELLOW TAPE.
- 3 WIRE MARKED WITH 2 WRAPS OF YELLOW TAPE.

2. SECURE CONDUIT 41953, TAB AS REQUIRED, OVER ALL WIRES IN CONTACT WITH SHARP EDGES.

1. LEGEND: — WINNEBAGO: - - - - - GABLE: - - - - - CHASSIS SUPPLIED WIRING.



DETAIL BA

265 CODES/STANDARDS-CSA/CMVSS
 1B1 CODES/STANDARDS USA

FOR ELECTRICAL TORQUE SPECIFICATIONS SEE DWG NO. 128783-01-000

FOR ELECTRICAL CALLOUTS SEE DWG NO. 121339-01-000

DESCRIPTION:	1B1 265	
CHASSIS ELECTRICAL BOX ASM		
SHEET:	ITEM/PART NO.:	REV
2 OF 2	000202565 / 33765901000	