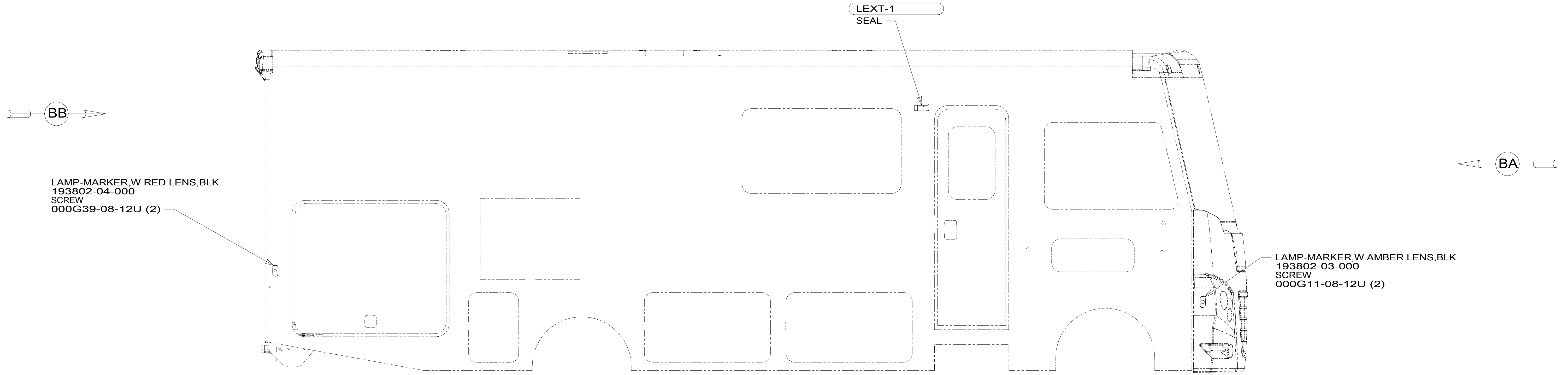


8 7 6 5 4 3 2 1

D  
C  
B  
A

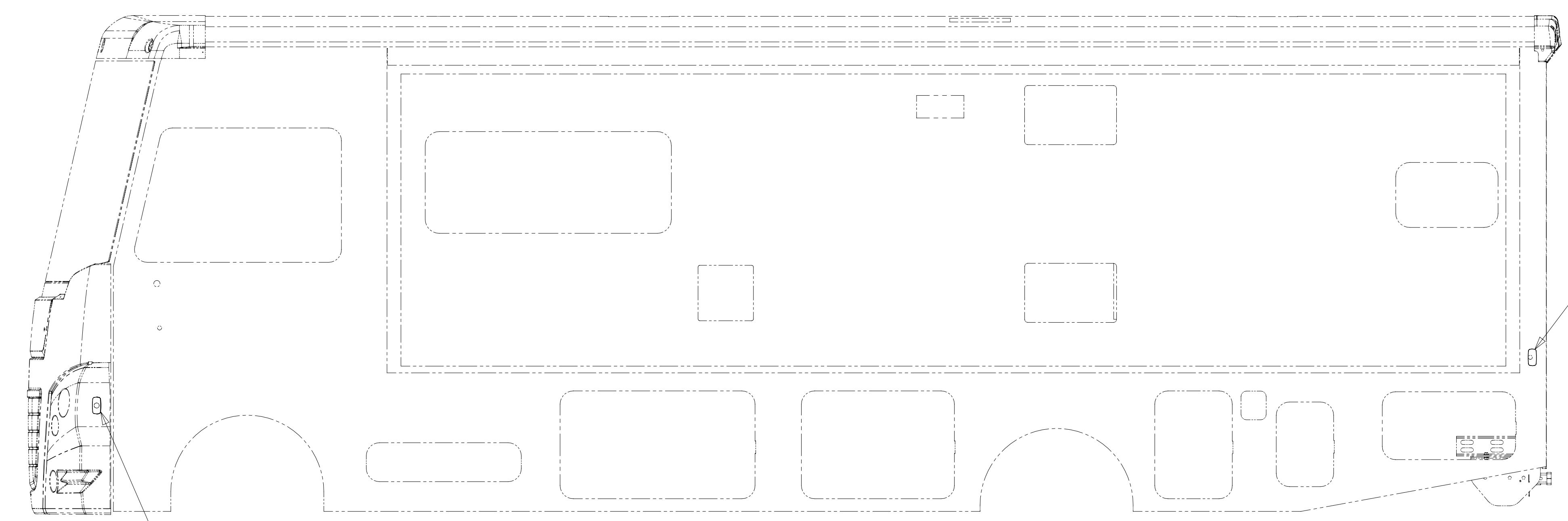
D  
C  
B  
A



LAMP-MARKER, W RED LENS, BLK  
193802-04-000  
SCREW  
000G39-08-12U (2)

LAMP-MARKER, W AMBER LENS, BLK  
193802-03-000  
SCREW  
000G11-08-12U (2)

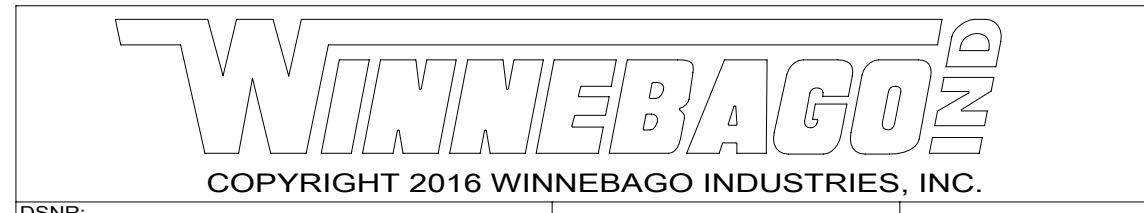
LEXT-1  
SEAL



LAMP-MARKER, W RED LENS, BLK  
193802-04-000  
SCREW  
000G39-08-12U (2)

LAMP-MARKER, W AMBER LENS, BLK  
193802-03-000  
SCREW G11-08-12U (2)

- 265 CODES/STANDARDS-CSA/CMVSS
- 1B1 CODES/STANDARDS-USA
- 1B1 265



DSNR:		ALL DIMENSIONS ARE IN MILLIMETERS	
DFFR:		MATERIAL:	
UNSPECIFIED TOLERANCES:			
WHOLE DIM (X)	: 3		
ONE-PLACE (X.X)	: 1.5		
TWO-PLACE (X.XX)	: 0.50		
ANGLE	: 1°		
REFER TO ES0018 FOR FASTENER TIGHTENING GUIDELINES		WEIGHT: (LBS)	FIRST USED:
			20 F-SER

FOR ELECTRICAL TORQUE SPECIFICATIONS SEE DWG NO. 128783-01-000

FOR ELECTRICAL CALLOUTS SEE DWG NO. 121339-01-000

**WIRING INSTL-EXTERIOR LAMPS**

SHEET: 1 OF 2 ITEM/PART NO.: 000199142 / 33664301000 REF: 1 28-Jan-2021

LAMP ASM-CLEARANCE  
187864-01-000 (5)

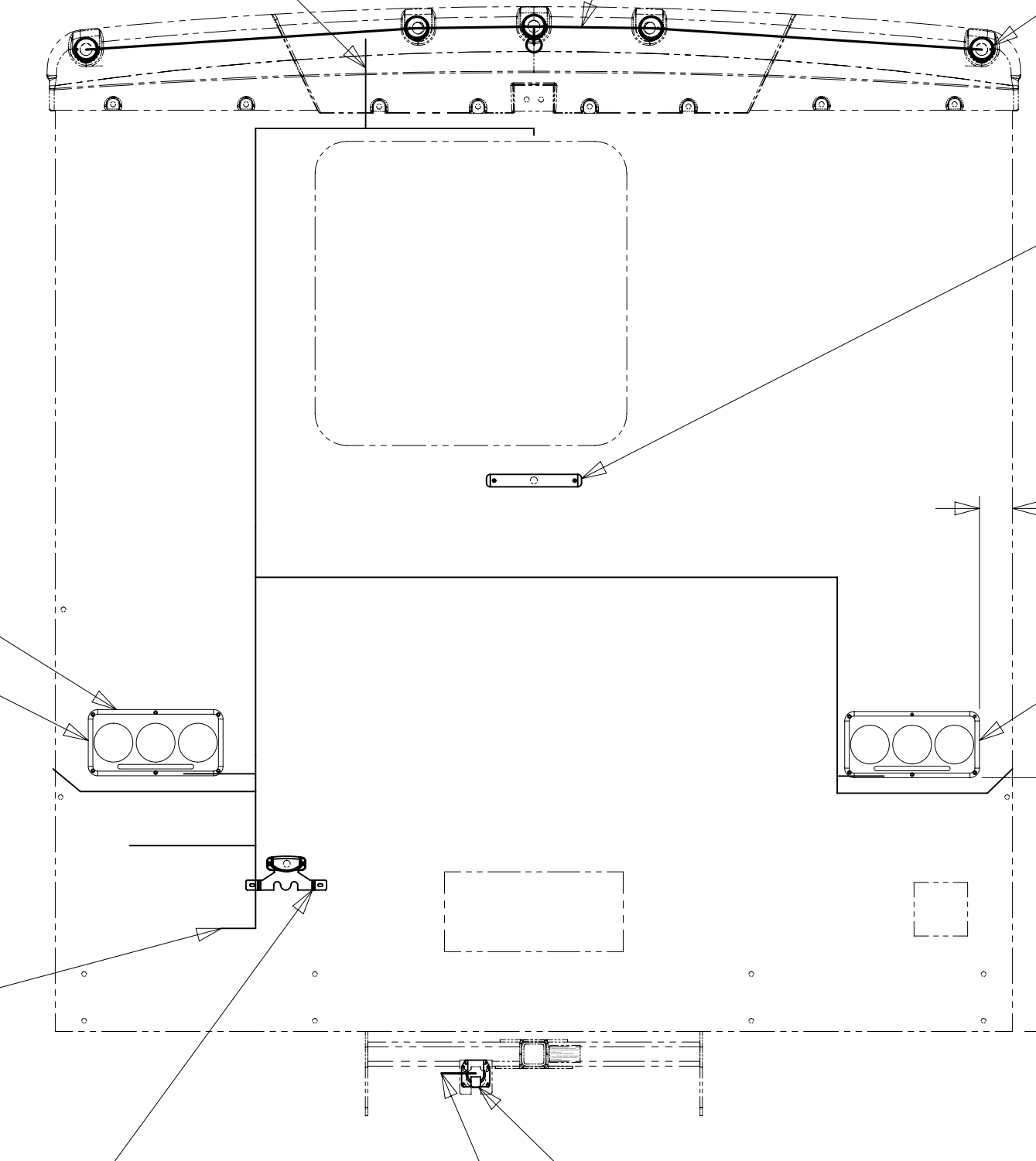
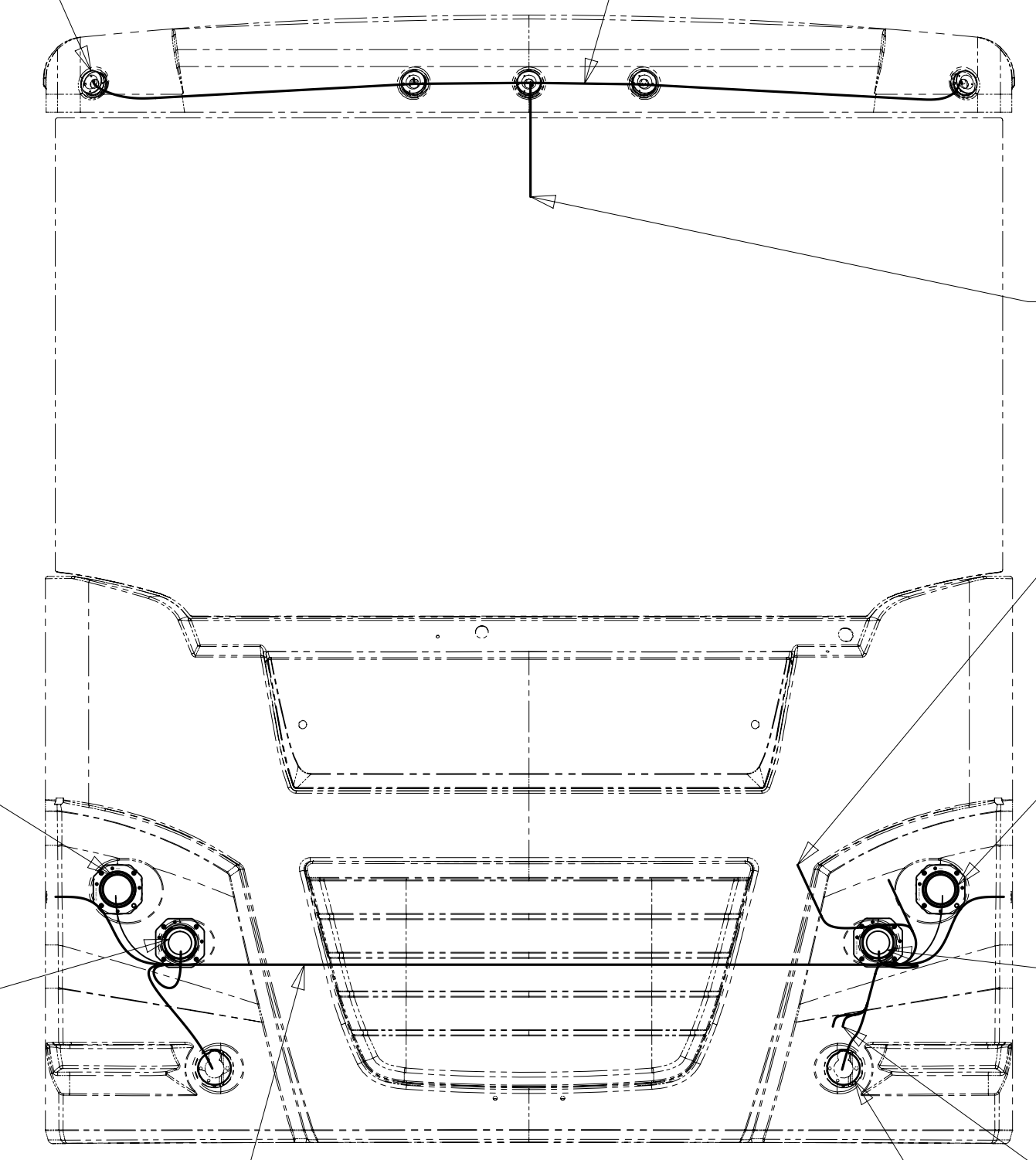
WIRE ASM-CLEARANCE LAMPS  
126486-05-000

2-PIN HOUSING  
CONNECTS BACKWALL  
TO CLEARANCE LAMPS

WIRE ASM-CLEARANCE LAMPS  
126486-04-000

LAMP ASM-CLEARANCE, RED  
138996-02-000 (5)  
BRACKET-LAMP,CLEARANCE  
138996-03-000 (5)  
SCREW  
G39-08-16U (10)

LAMP ASM-BRAKE  
136916-01-000  
SCREW  
000G11-08-20U (2)  
CONNECTOR  
058028-01-000 (2)  
BLK/WHT TO YEL  
BLK TO WHT



HEADLAMP ASM-LOW 90MM  
146527-01-000  
NUT  
000D27-08-00U (4)  
WASHER  
000E13-08-00U (4)  
(CIRCUITS; BBX, DDM)

HEADLAMP ASM-HIGH 90MM  
146527-02-000  
NUT  
000D27-08-00U (4)  
WASHER  
000E13-08-00U (4)  
(CIRCUITS; NB, DDM)

WIRE ASM-HEADLAMP  
000198104 / 336450-01-000

CHASSIS HOUSING  
TO CHASSIS HEADLAMP  
CONNECTOR  
WIRE ASM-HEADLAMP  
(FORD CHASSIS SUPPLIED)  
LU94-14290-A  
DETAIL BE

HEADLAMP ASM-LOW 90MM  
146527-01-000  
NUT  
000D27-08-00U (4)  
WASHER  
000E13-08-00U (4)  
(CIRCUITS; BBW,DDL)

HEADLAMP ASM-HIGH 90MM  
146527-02-000  
NUT  
000D27-08-00U (4)  
WASHER  
000E13-08-00U (4)  
(CIRCUITS; NB,DDL)

WIRE ASM-HORN  
(FORD CHASSIS SUPPLIED)  
LU94-13A840-A  
DETAIL BF

LAMP ASM-PARK/TURN,CLEAR  
146560-01-000 (2)  
BULB  
112708-02-000 (2)  
NUT  
139130-01-CHT (6)

LAMP ASM-STOP/TURN/  
TAIL/BACK-UP,LED  
000200304 / 336941-01-000 (2)  
SCREW  
000G11-07-12U (12)

SEE DETAIL BC

6-PIN HOUSING  
TO WIRE ASM-CHASSIS

BRACKET-LICENSE  
066432-03-000  
SCREW  
000G67-10-129 (2)  
LIGHT-LICENSE  
066432-02-000  
SCREW  
000G39-08-12U (2)  
CONNECTOR  
058028-01-000 (2)

94 (2)

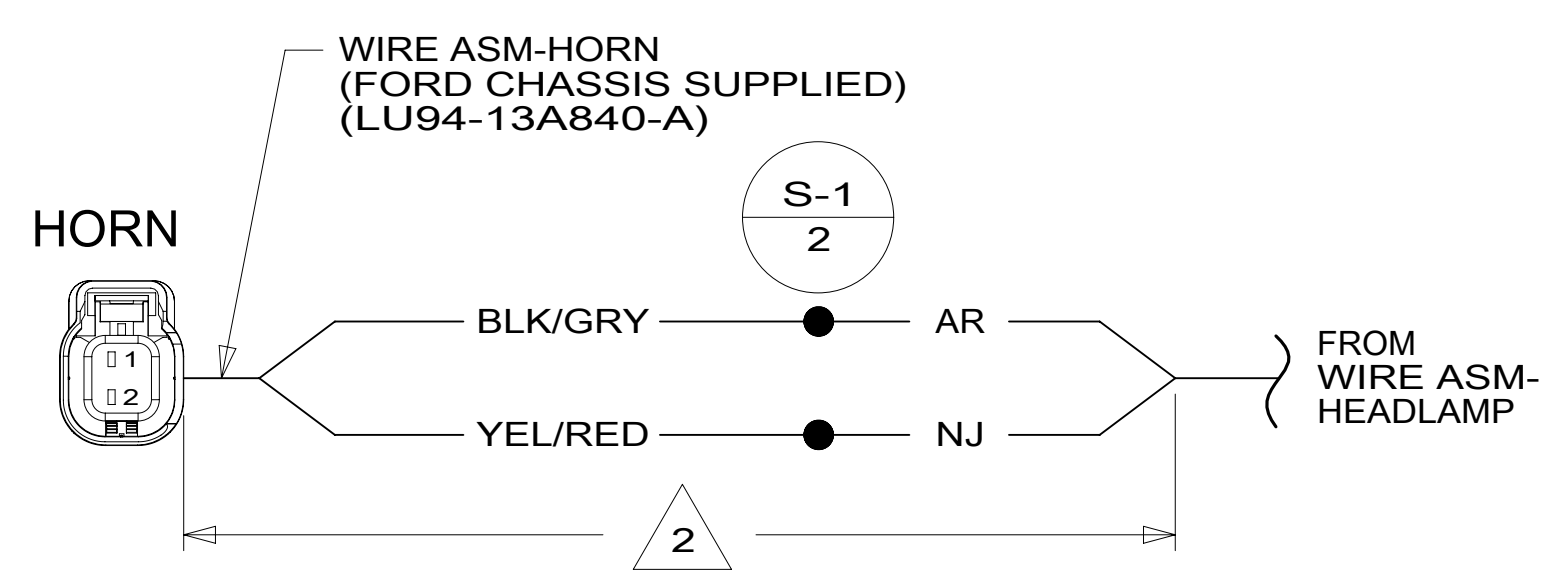
553 (2)

CONNECTOR-TRAILER  
157593-01-000  
SCREW  
101618-01-000 (4)

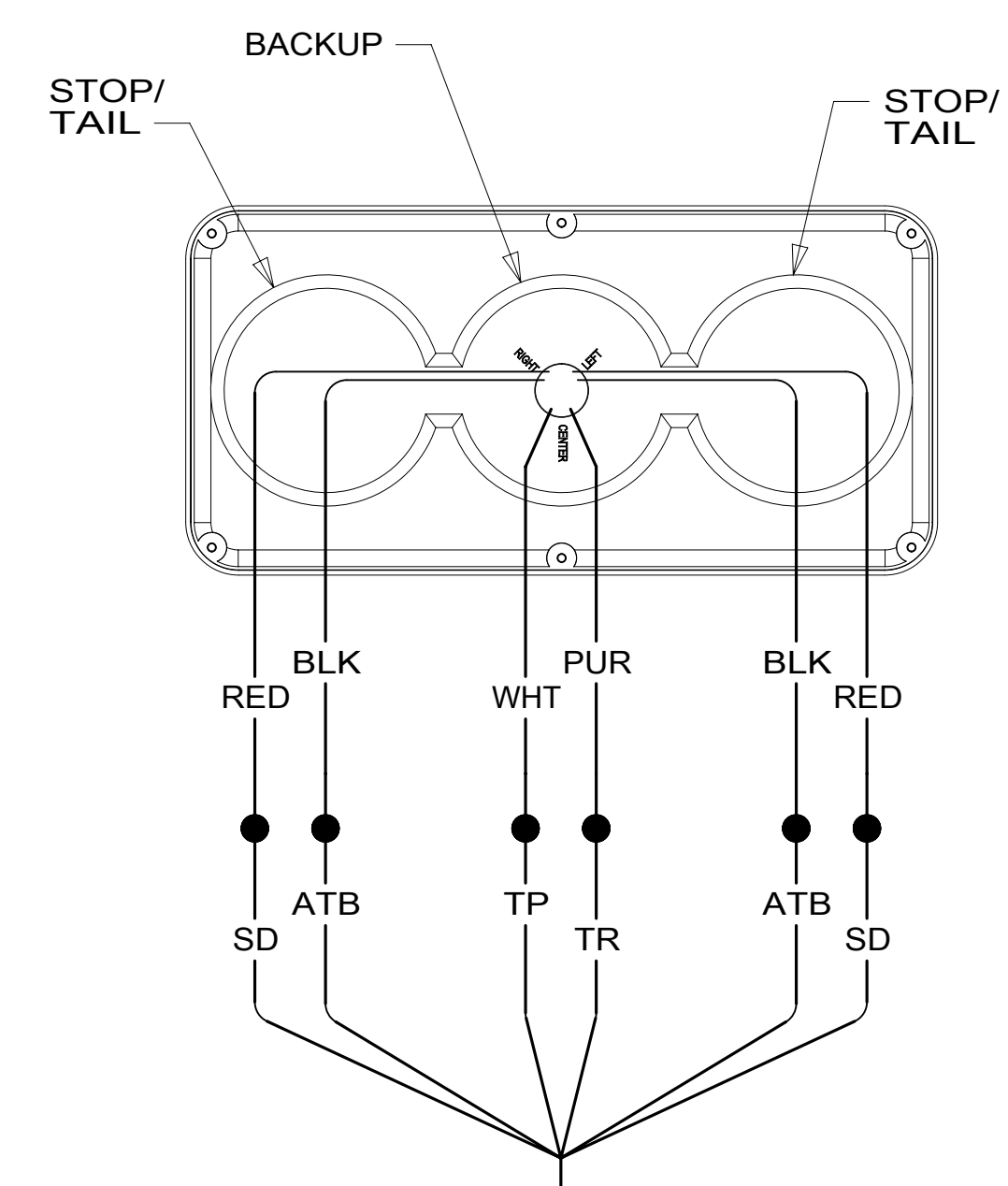
WIRE ASM-CHASSIS  
TO TRAILER CONNECTOR

VIEW BA

VIEW BB

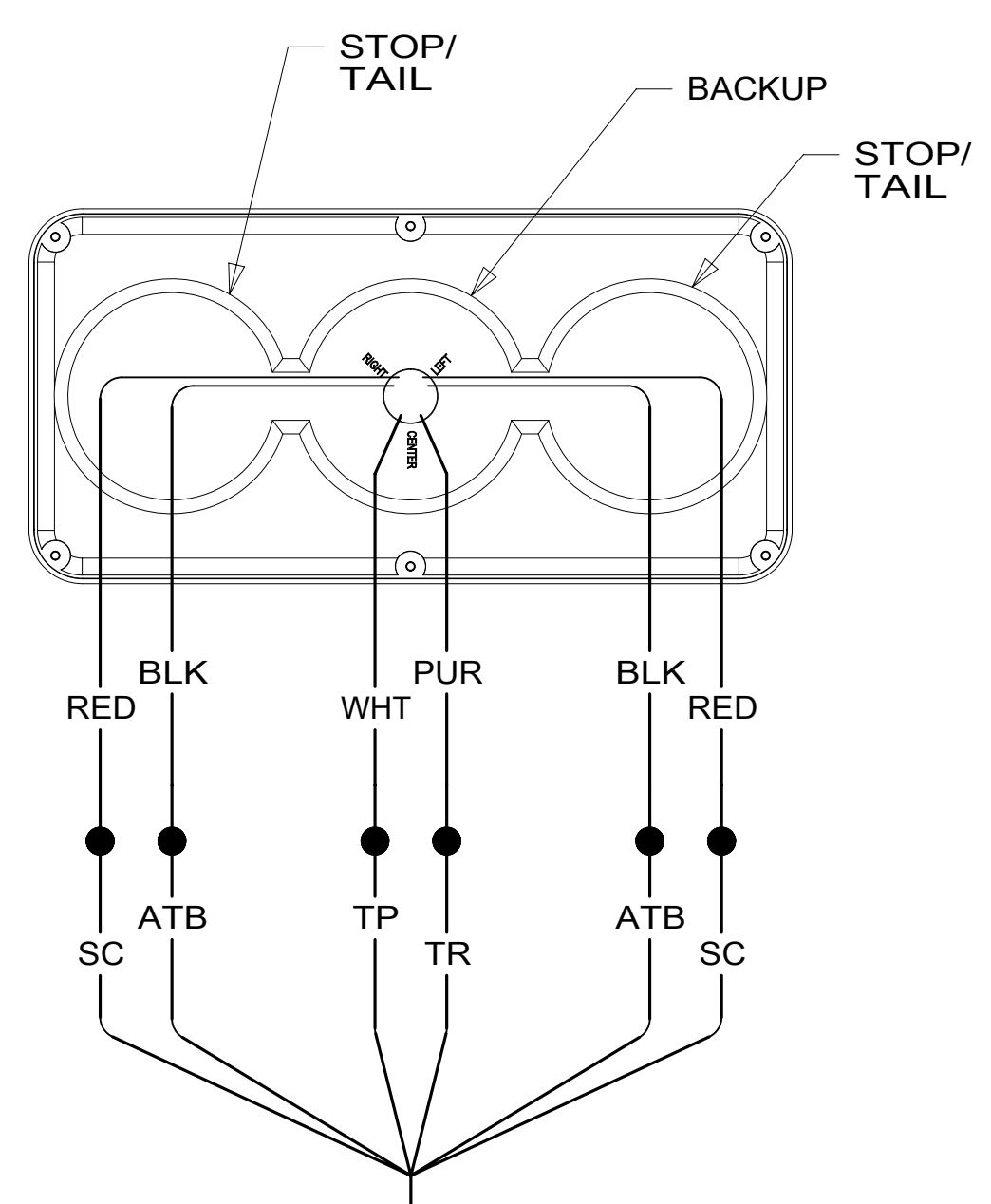


DETAIL BF



TO WIRE ASM-  
BACKWALL

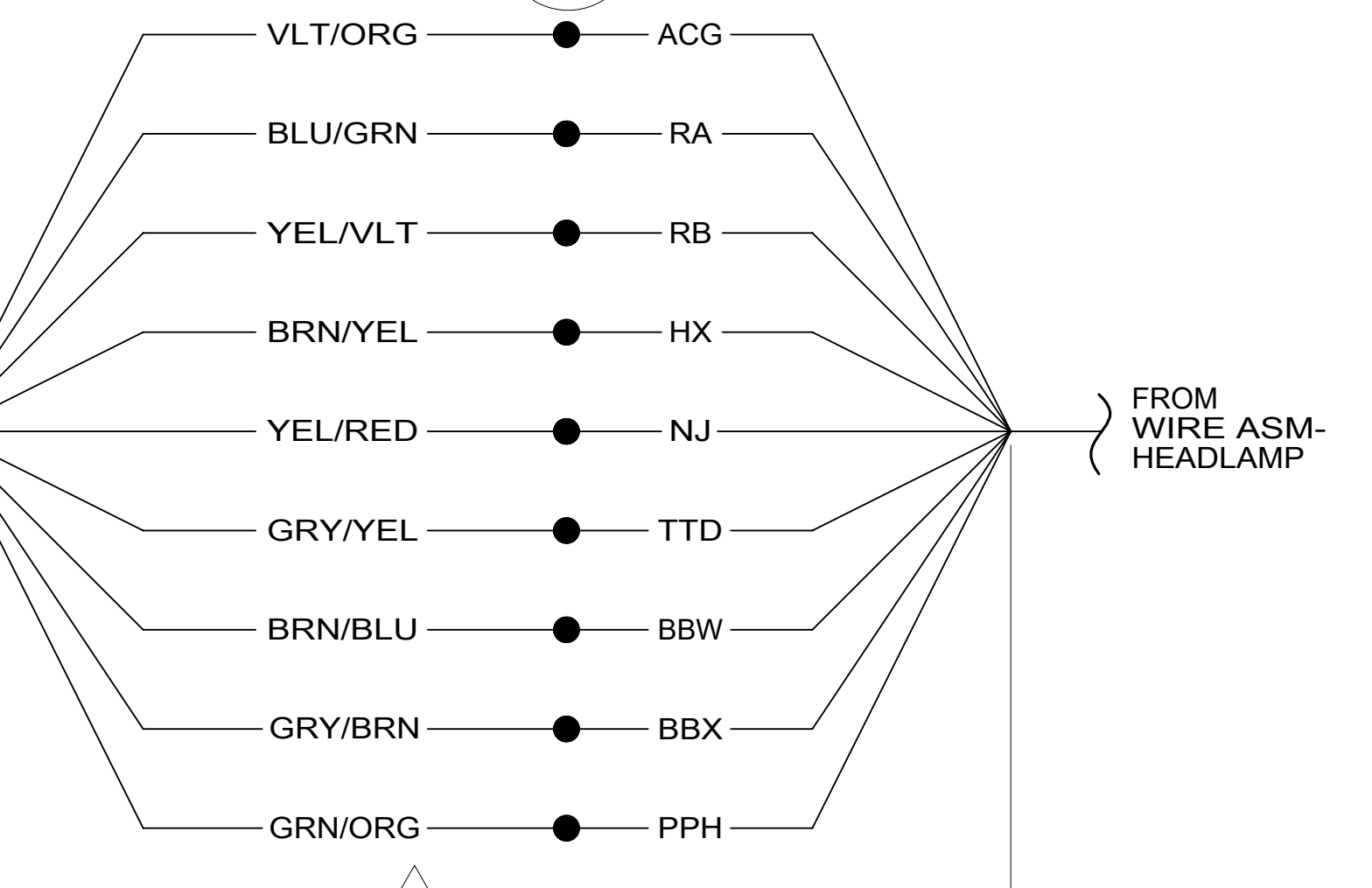
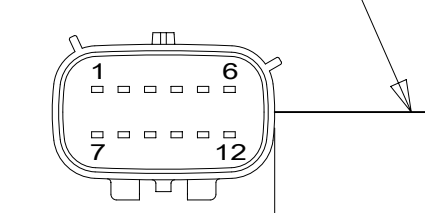
DETAIL BC



TO WIRE ASM-  
BACKWALL

DETAIL BD

WIRE ASM-HEADLAMP  
(FORD CHASSIS SUPPLIED)  
(LU94-14290-A)



FROM WIRE ASM-  
HEADLAMP

265 CODES/STANDARDS-CSA/CMVSS

1B1 CODES/STANDARDS USA

1B1 265

DESCRIPTION:  
**WIRING INSTL-EXTERIOR LAMPS**

SHEET: 2 OF 2 ITEM/PART NO: 000199142 / 33664301000 REV

2 COVER WITH MINIMUM POSSIBLE DIAMETER CONDUIT  
41953-01,-02,-03,-06,-07,-08,-15-000 AS REQUIRED.  
SECURE BOTH ENDS WITH TAPE 8363-01-000 TO WIRE ASM.

1. GATHER ALL EXCESS WIRE AFTER MAKING ALL CONNECTIONS AND  
BUNDLE AND SECURE WITH TIE-WIRE 008343-01-000 OR 093147-01-000.

NOTES:

FOR ELECTRICAL  
TORQUE  
SPECIFICATIONS  
SEE DWG NO.  
128783-01-000

FOR  
ELECTRICAL  
CALLOUTS  
SEE DWG NO.  
121339-01-000