

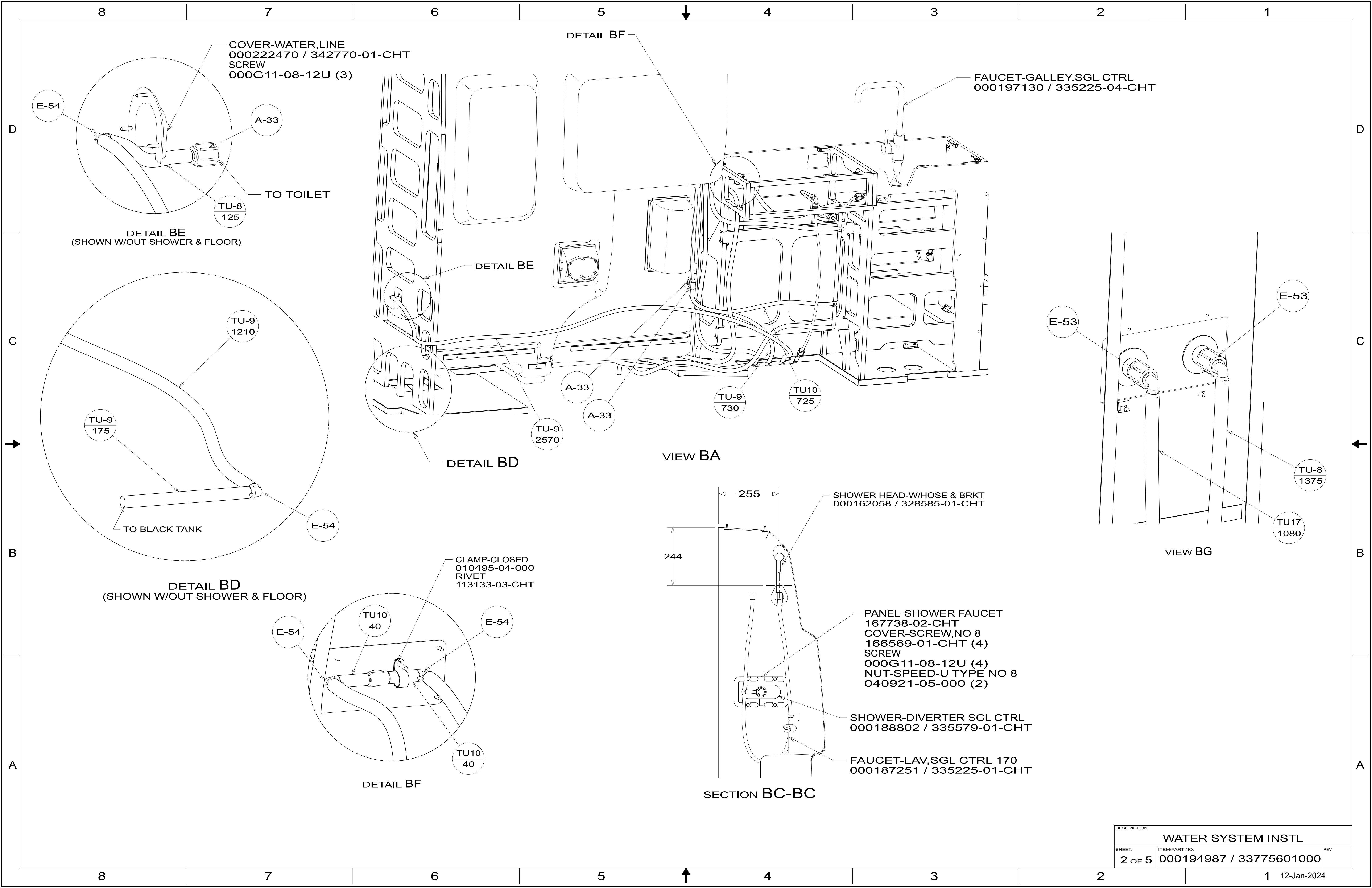
- 12. ADD WASHERS TO EVEN OUT HOW THE VALVE SITS ON THE FLOOR.
- 11. SUPPLIED WITH KIT WITH PANEL-WATER CENTER 000196556 / 336025-01-CHT
- 10. INSTALL BYPASS PLUG FOR SYSTEM TESTING AND SHIPPING.
- 9. PARTS TO BE SUPPLIED WITH FILTER KIT 000038865 / 318913-01-000.
- 8. ALL CRIMP FITTINGS TO 1/2" PEX TUBING REQUIRE 1/2" CLAMP 000156249 / 326670-01-000.
- 7. ALL CRIMP FITTINGS TO 5/8" PEX TUBING REQUIRE 5/8" CLAMP 000156248 / 326669-01-000.
- 6. LABEL HOT AND COLD SUPPLY TUBES AND TAPE FITTING TO TUBE BEFORE CABINET SET TO PREVENT MOVEMENT.
- 5. ADD PIPE WRAP (LADDER SCRAP 110157-02-000) INSULATION.
- 4. ADD TEFLON TAPE 010405-02-000.
- 3. ALL TUBING TO BE SECURED AT 1200 INTERVALS MAXIMUM WITH CLAMP 010495-01-000 AND SCREW 000G67-10-12U OR EQUIVALENT.
- 2. TUBING TO BE INSTALLED WITH SUFFICIENT SLOPE TO PROVIDE DRAINAGE TO NEAREST VALVE.
- 1. PLASTIC FITTINGS TO BE SEALED WITH SEALANT 084456-01-000.

NOTES:

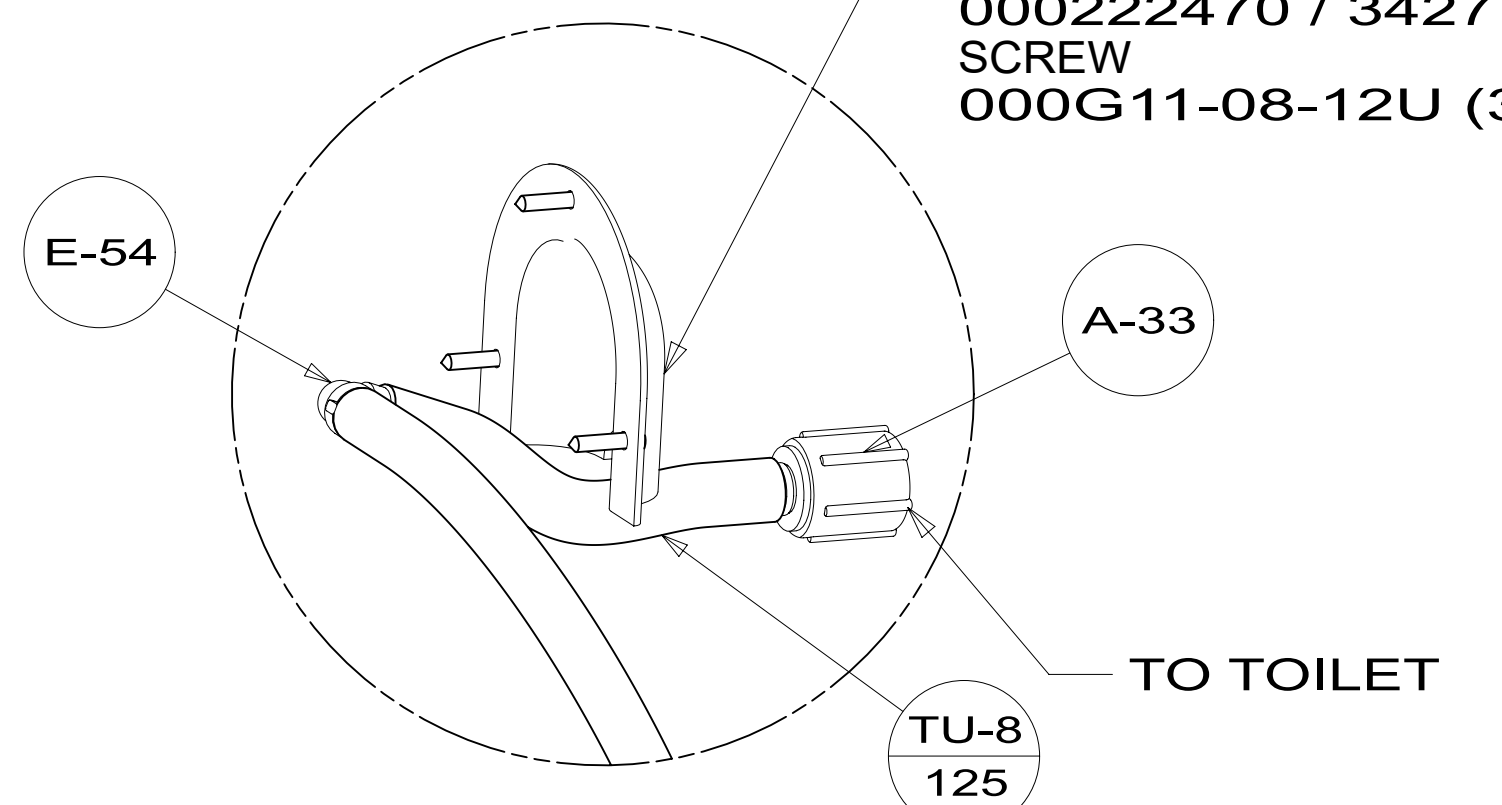
X-X

FOR WATER CALLOUTS SEE DWG NO. 000209446 / 303369-01-000

WINNEBAGO [®]		COPYRIGHT 2024 WINNEBAGO INDUSTRIES, INC.	
DSNR:	DFTR:	ALL DIMENSIONS ARE IN MILLIMETERS	
UNSPECIFIED TOLERANCES:	MATERIAL:		
WHOLE DIM (X) : 3			
ONE-PLACE (X.X) : 1.5			
TWO-PLACE (X.XX) : 0.50			
ANGLE : 1°			
REFER TO ES0018 FOR FASTENER TIGHTENING GUIDELINES		WEIGHT: (LBS)	FIRST USED: (REF)
			21 259G
DESCRIPTION: WATER SYSTEM INSTL			
SHEET:	ITEM/PART NO.:	REV	
1 OF 5	000194987 / 33775601000		
		REF:	1 12-Jan-2024

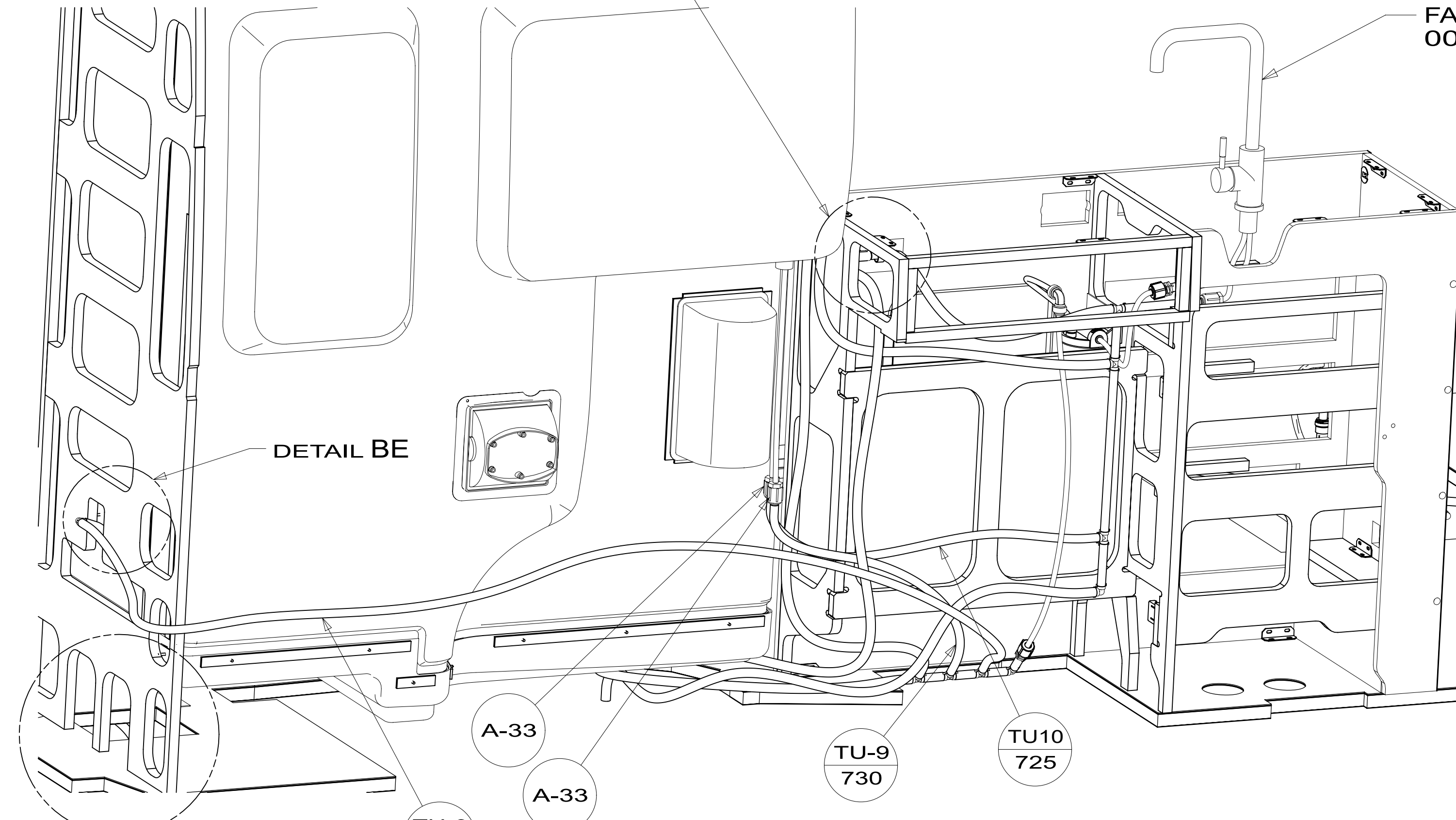


COVER-WATER,LINE
000222470 / 342770-01-CHT
SCREW
000G11-08-12U (3)



DETAIL BF

FAUCET-GALLEY,SGL CTRL
000197130 / 335225-04-CHT

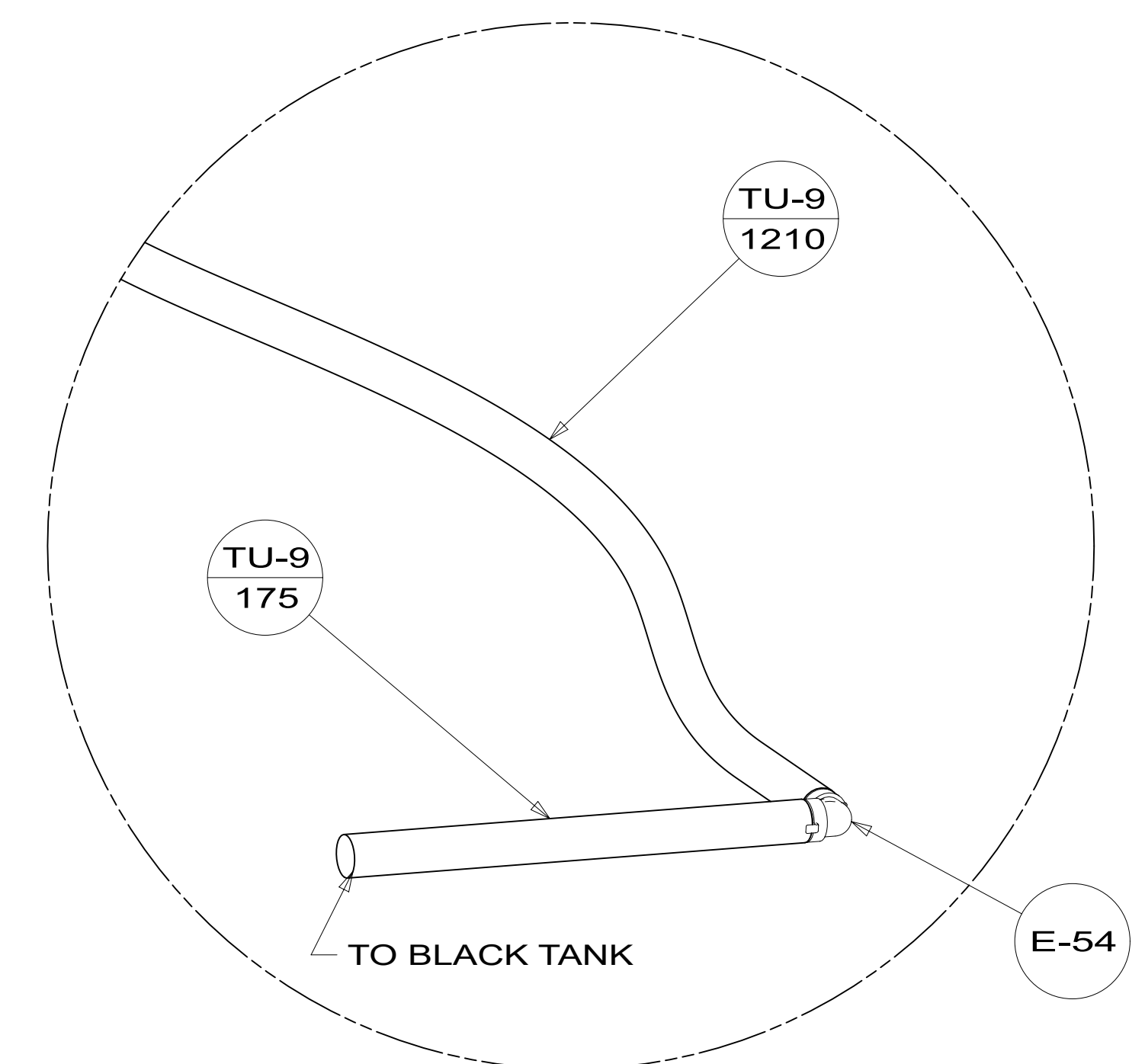


DETAIL BE

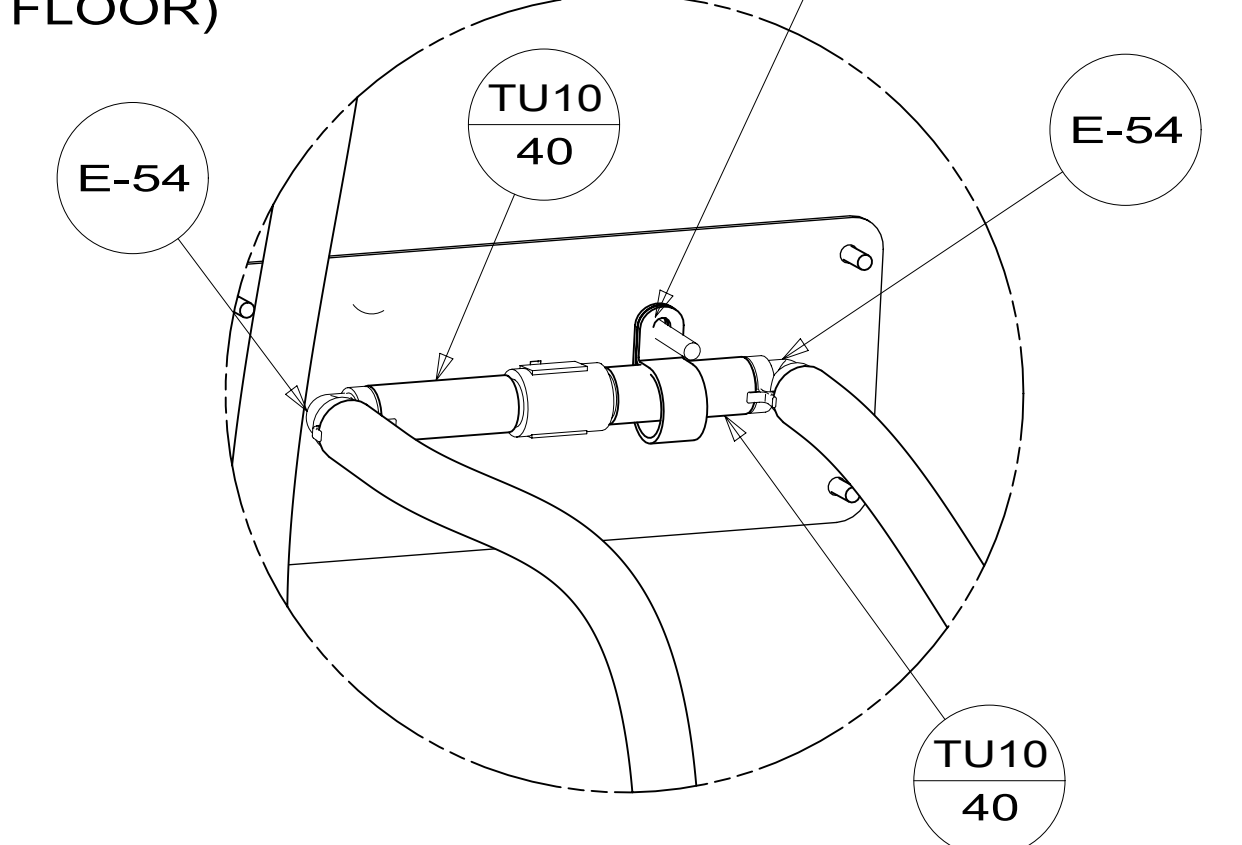
DETAIL BD

VIEW BA

VIEW BG

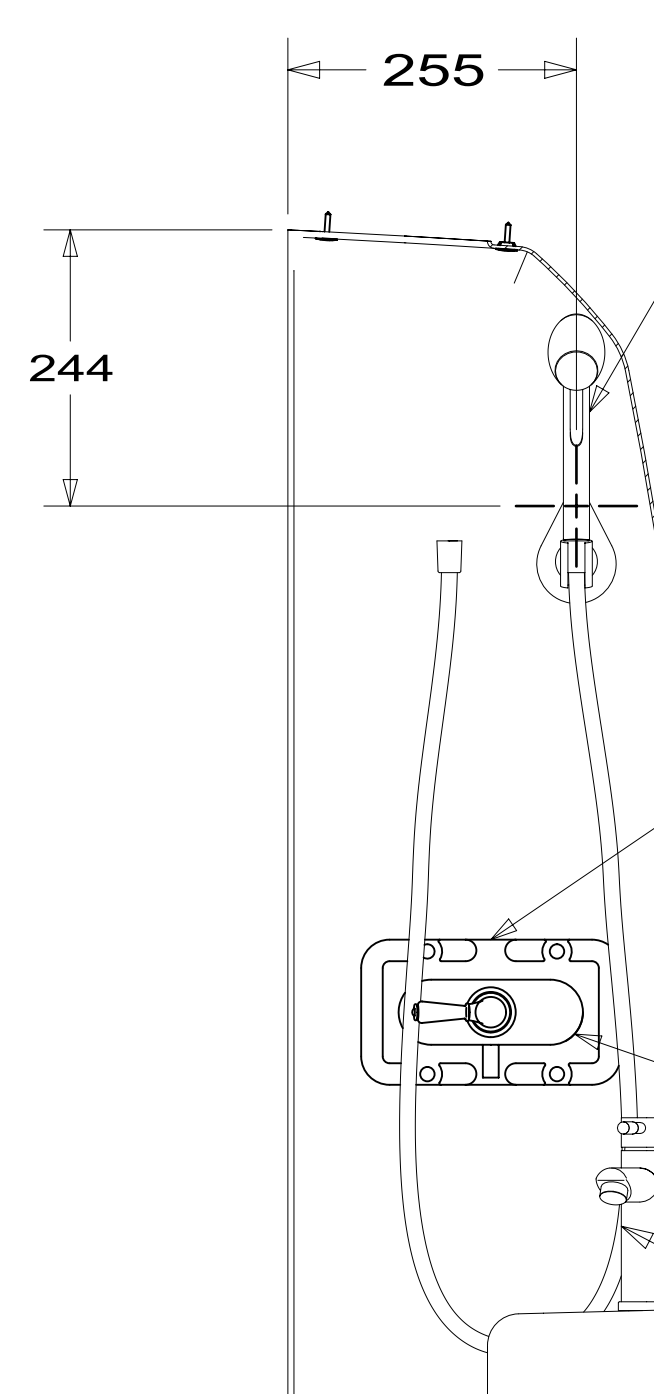


CLAMP-CLOSED
010495-04-000
RIVET
113133-03-CHT



DETAIL BF

SHOWER HEAD-W/HOSE & BRKT
000162058 / 328585-01-CHT

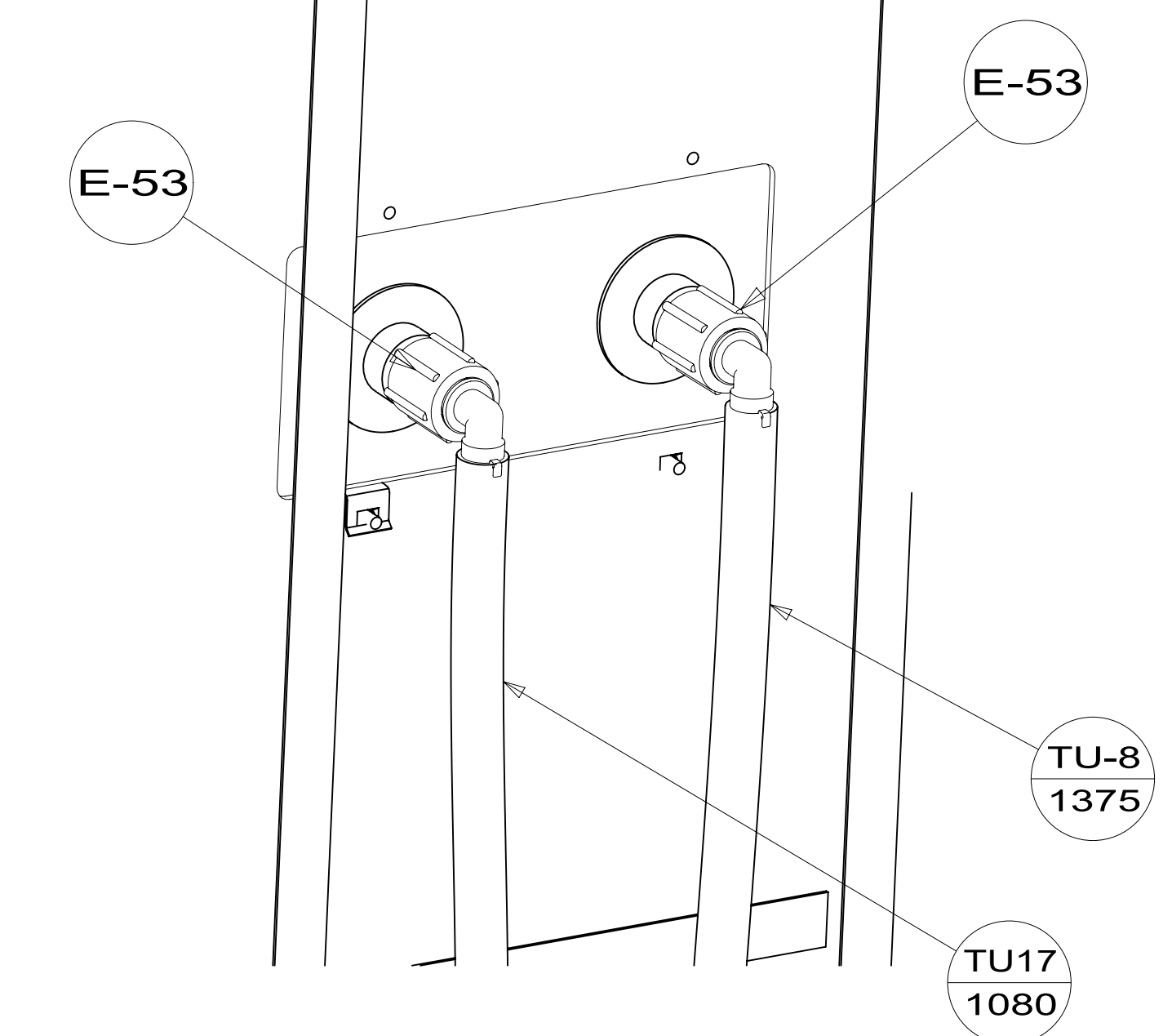


SECTION BC-BC

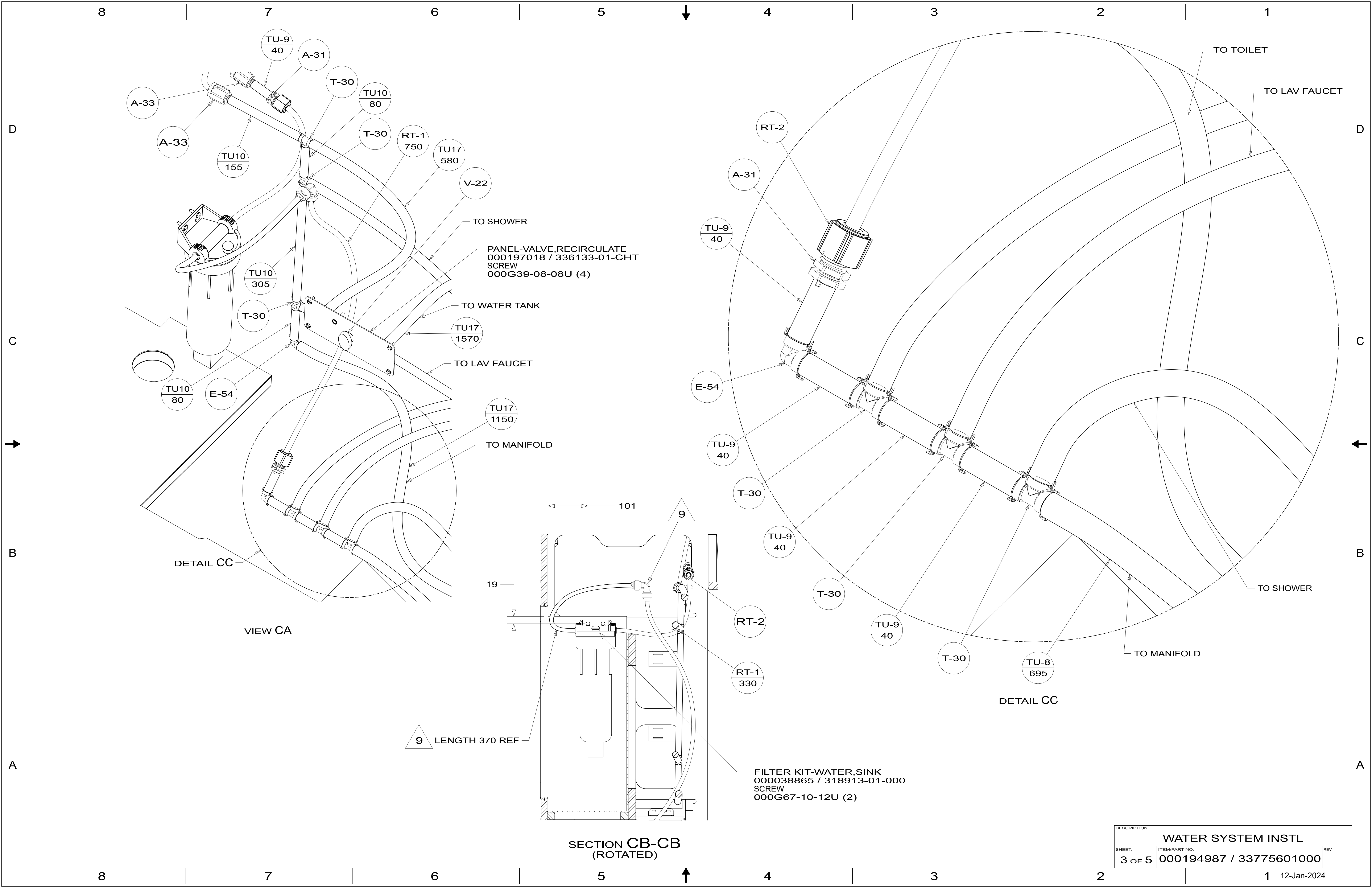
PANEL-SHOWER FAUCET
167738-02-CHT
COVER-SCREW,NO 8
166569-01-CHT (4)
SCREW
000G11-08-12U (4)
NUT-SPEED-U TYPE NO 8
040921-05-000 (2)

SHOWER-DIVERTER SGL CTRL
000188802 / 335579-01-CHT

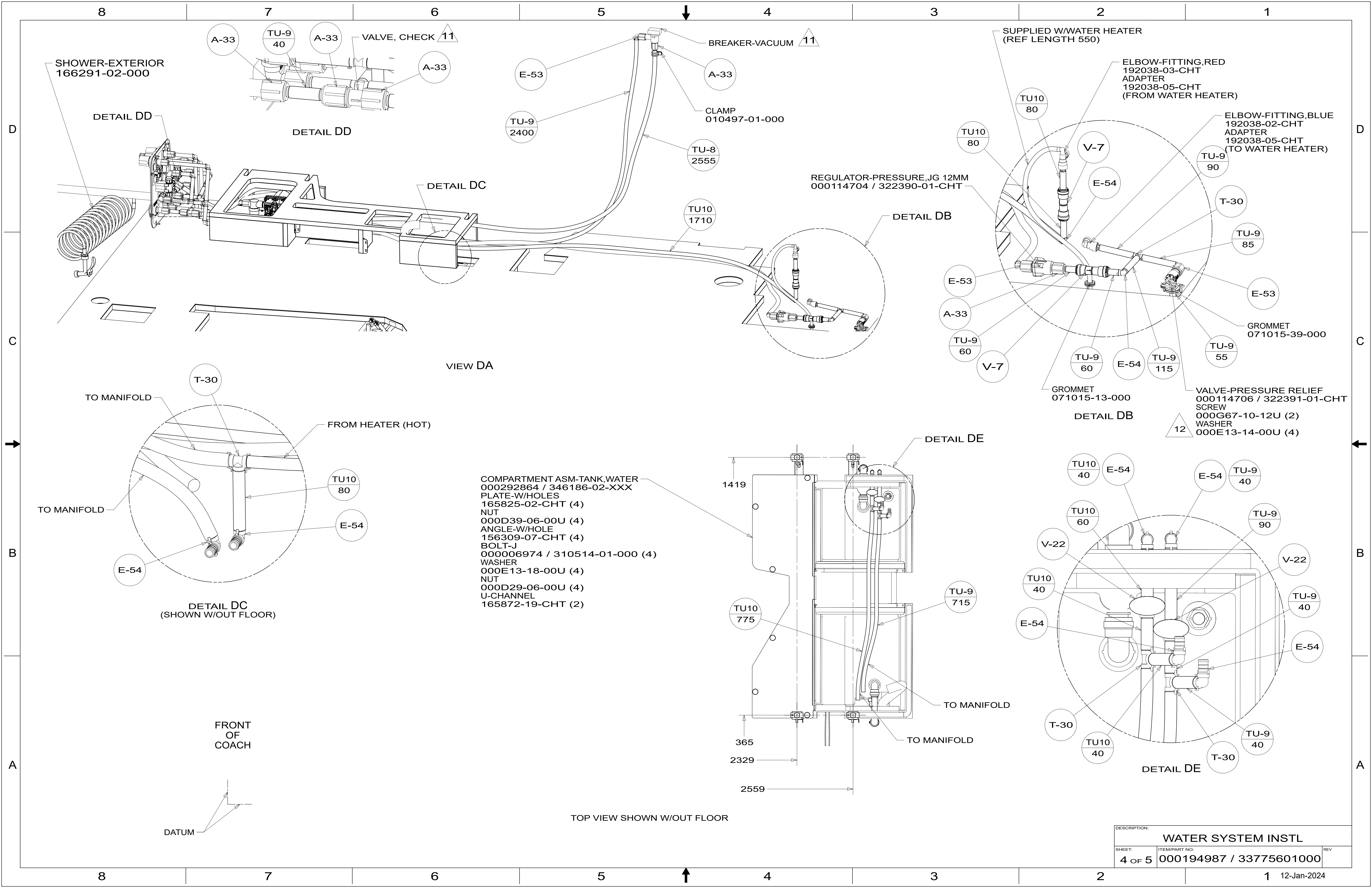
FAUCET-LAV,SGL CTRL 170
000187251 / 335225-01-CHT



DESCRIPTION:		
WATER SYSTEM INSTL		
SHEET:	ITEM/PART NO:	REV
2 OF 5	000194987 / 33775601000	



DESCRIPTION:		
WATER SYSTEM INSTL		
SHEET:	ITEM/PART NO.:	REV
3 OF 5	000194987 / 33775601000	



SHOWER-EXTERIOR
166291-02-000

DETAIL DD

DETAIL DD

DETAIL DC

REGULATOR-PRESSURE,JG 12MM
000114704 / 322390-01-CHT

DETAIL DB

VIEW DA

TO MANIFOLD

FROM HEATER (HOT)

TO MANIFOLD

DETAIL DC
(SHOWN W/OUT FLOOR)

COMPARTMENT ASM-TANK,WATER
000292864 / 346186-02-XXX
PLATE-W/HOLES
165825-02-CHT (4)
NUT
000D39-06-00U (4)
ANGLE-W/HOLE
156309-07-CHT (4)
BOLT-J
000006974 / 310514-01-000 (4)
WASHER
000E13-18-00U (4)
NUT
000D29-06-00U (4)
U-CHANNEL
165872-19-CHT (2)

FRONT
OF
COACH

DATUM

TOP VIEW SHOWN W/OUT FLOOR

1419

TU10
775

365

2329

2559

DETAIL DE

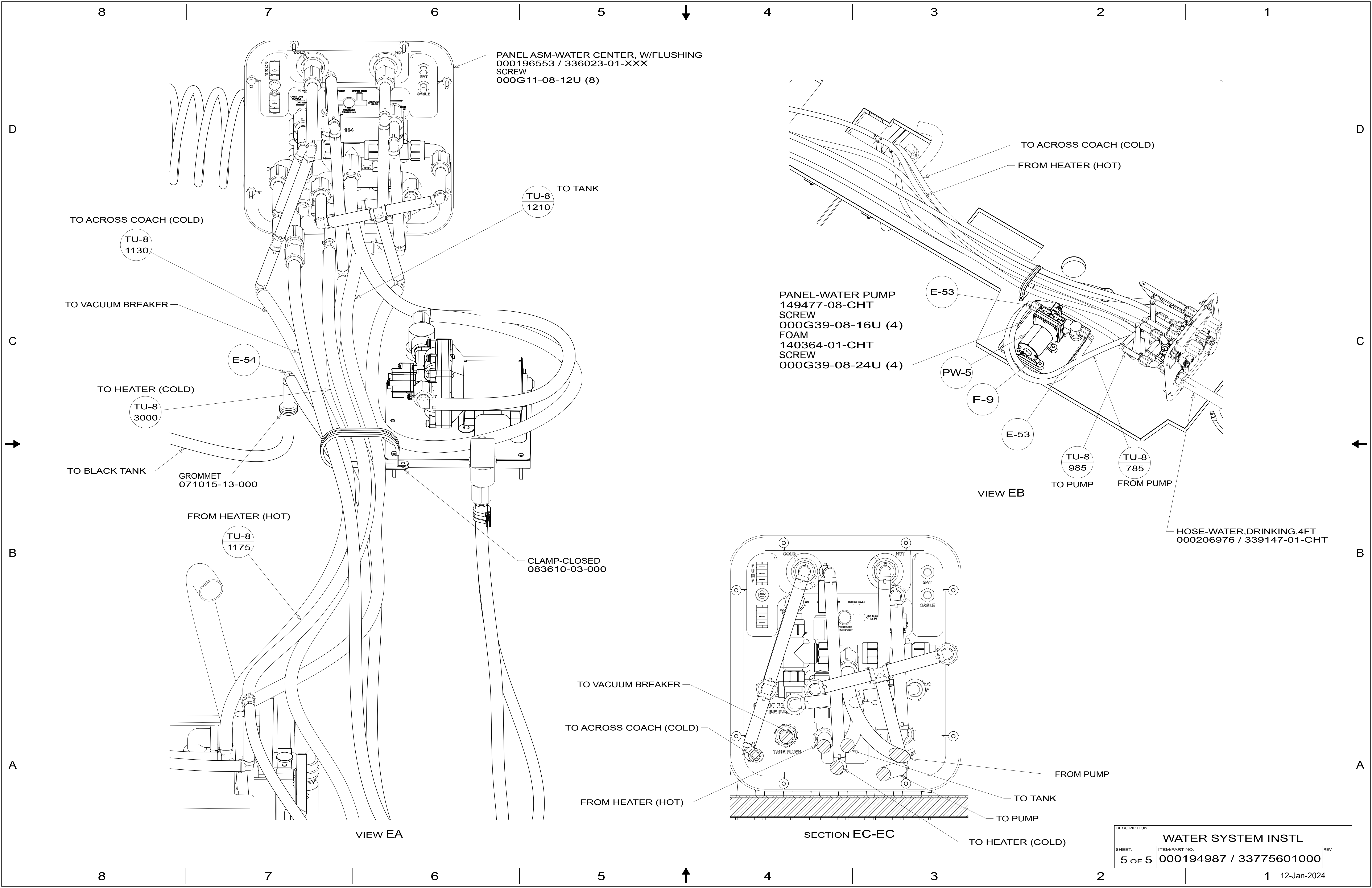
TO MANIFOLD

TO MANIFOLD

DETAIL DE

DESCRIPTION:		
WATER SYSTEM INSTL		
SHEET:	ITEM/PART NO.:	REV
4 OF 5	000194987 / 33775601000	

12-Jan-2024



DESCRIPTION:		
WATER SYSTEM INSTL		
SHEET:	ITEM/PART NO.:	REV
5 OF 5	000194987 / 33775601000	