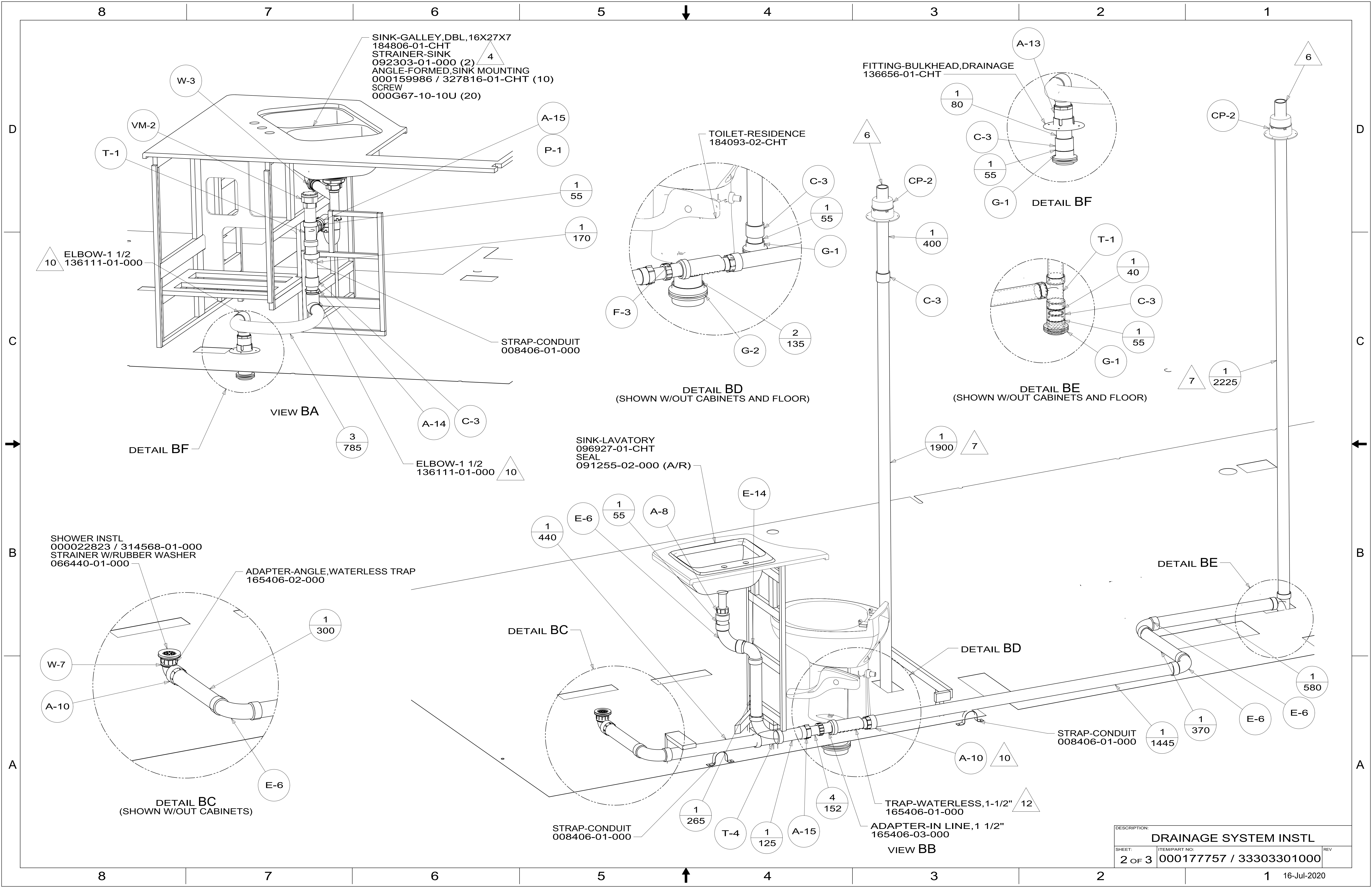


- 12. REMOVE SWIVEL NUT ON TRAP-WATERLESS 165406-01-000, AND CONNECT A-10.
- 11. SEE WIRING INSTL-BODY FOR ELECTRICAL CONNECTION.
- 10. APPLY PRIMER 126427-02-000 AND CEMENT 126427-01-000 BETWEEN ELBOW AND FLEX PIPE.
- 9. SEE DRAWING 061607 FOR INSTALLATION OF GROMMETS.
- 8. SECURE DRAINAGE PIPES TO CABINET USING WIRE TIE 108046-02-000, AND SCREW 000G67-10-12U AT INTERVALS OF NOT OF NOT MORE THAN 4 FEET APART.
- 7. SECURE VENT PIPE TO FLOOR WITH CLAMP 000156237 / 326663-02-000 (2), SCREW 000G67-10-12U (2), BRACKET 136878-01-CHT (2).
- 6. VENT PIPE MUST PROJECT 51 MIN AND 64 MAX ABOVE ROOF FOR PROPER FIT AND FUNCTION. ADD S-1 (000156099 / 326607-01-CHT SEAL-VENT PIPE) AROUND PIPE ON ROOF BEFORE VENT CAP IS INSTALLED.
- 5. SEAL AROUND SHOWER WITH SILICONE.
- 4. USE SMOOTH PLUMBERS PUTTY 167459-01-000 TO SEAL STRAINER (0.2 PER STRAINER).
- 3. ALL PIPE AND FITTINGS TO BE ASSEMBLED WITH SOLVENT 004020-01-000 (USA), 004020-02-000 (CAN)
- 2. SLOPE OF TRAP ARM MUST BE 6 PER 305 mm.
- 1. SLOPE OF HORIZONTAL PIPING TO BE MINIMUM OF 3 PER 305 mm.

NOTES:

X-X  
FOR  
DRAINAGE  
CALLOUTS  
SEE DWG NO.  
000211962 /  
303370-01-000

<b>WINNEBAGO</b> COPYRIGHT 2018 WINNEBAGO INDUSTRIES, INC.			
DSNR:		ALL DIMENSIONS ARE IN MILLIMETERS	
DIFFR:			
UNSPECIFIED TOLERANCES:	MATERIAL:		
WHOLE DIM (X) :	3		
ONE-PLACE (X.X) :	1.5		
TWO-PLACE (X.XX) :	0.50		
ANGLE :	1°		
REFER TO ES0018 FOR FASTENER TIGHTENING GUIDELINES	WEIGHT: (LBS)	FIRST USED: (REF)	
	-	20 E27P	
<b>DRAINAGE SYSTEM INSTL</b>			
SHEET:	ITEM/PART NO:	REV	
1 OF 3	000177757 / 33303301000		
REF:		1 16-Jul-2020	



SINK-GALLEY, DBL, 16X27X7  
 184806-01-CHT  
 STRAINER-SINK  
 092303-01-000 (2)  
 ANGLE-FORMED, SINK MOUNTING  
 000159986 / 327816-01-CHT (10)  
 SCREW  
 000G67-10-10U (20)

FITTING-BULKHEAD, DRAINAGE  
 136656-01-CHT

TOILET-RESIDENCE  
 184093-02-CHT

SINK-LAVATORY  
 096927-01-CHT  
 SEAL  
 091255-02-000 (A/R)

SHOWER INSTL  
 000022823 / 314568-01-000  
 STRAINER W/RUBBER WASHER  
 066440-01-000

ADAPTER-ANGLE, WATERLESS TRAP  
 165406-02-000

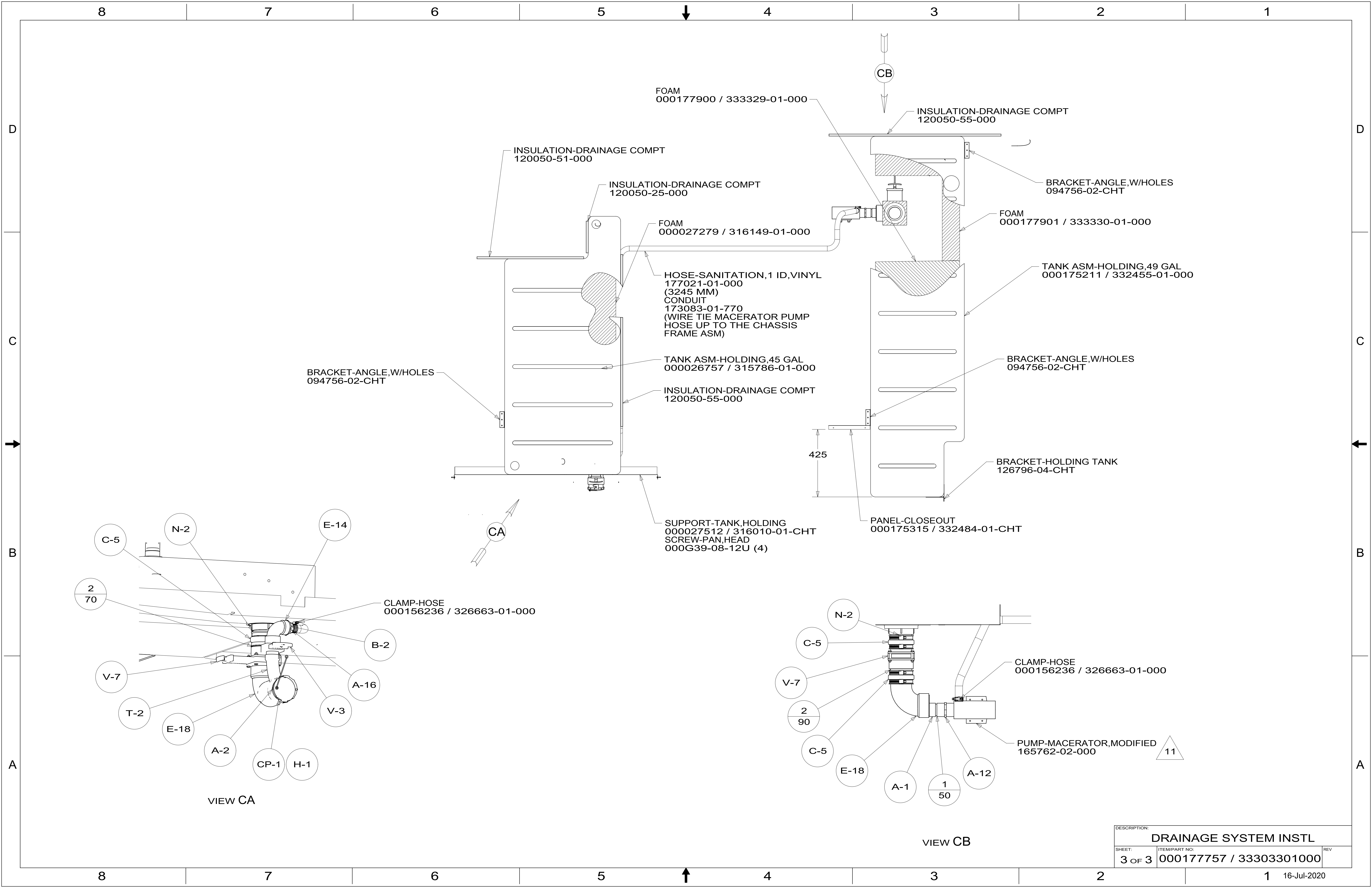
TRAP-WATERLESS, 1-1/2"  
 165406-01-000

ADAPTER-IN LINE, 1 1/2"  
 165406-03-000

STRAP-CONDUIT  
 008406-01-000

STRAP-CONDUIT  
 008406-01-000

DESCRIPTION: <b>DRAINAGE SYSTEM INSTL</b>		
SHEET: 2 OF 3	ITEM/PART NO: 000177757 / 33303301000	REV
		16-Jul-2020



FOAM  
000177900 / 333329-01-000

INSULATION-DRAINAGE COMPT  
120050-55-000

INSULATION-DRAINAGE COMPT  
120050-51-000

INSULATION-DRAINAGE COMPT  
120050-25-000

FOAM  
000027279 / 316149-01-000

HOSE-SANITATION, 1 ID, VINYL  
177021-01-000  
(3245 MM)  
CONDUIT  
173083-01-770  
(WIRE TIE MACERATOR PUMP  
HOSE UP TO THE CHASSIS  
FRAME ASM)

TANK ASM-HOLDING, 45 GAL  
000026757 / 315786-01-000

INSULATION-DRAINAGE COMPT  
120050-55-000

BRACKET-ANGLE, W/HOLES  
094756-02-CHT

SUPPORT-TANK, HOLDING  
000027512 / 316010-01-CHT  
SCREW-PAN, HEAD  
000G39-08-12U (4)

BRACKET-ANGLE, W/HOLES  
094756-02-CHT

FOAM  
000177901 / 333330-01-000

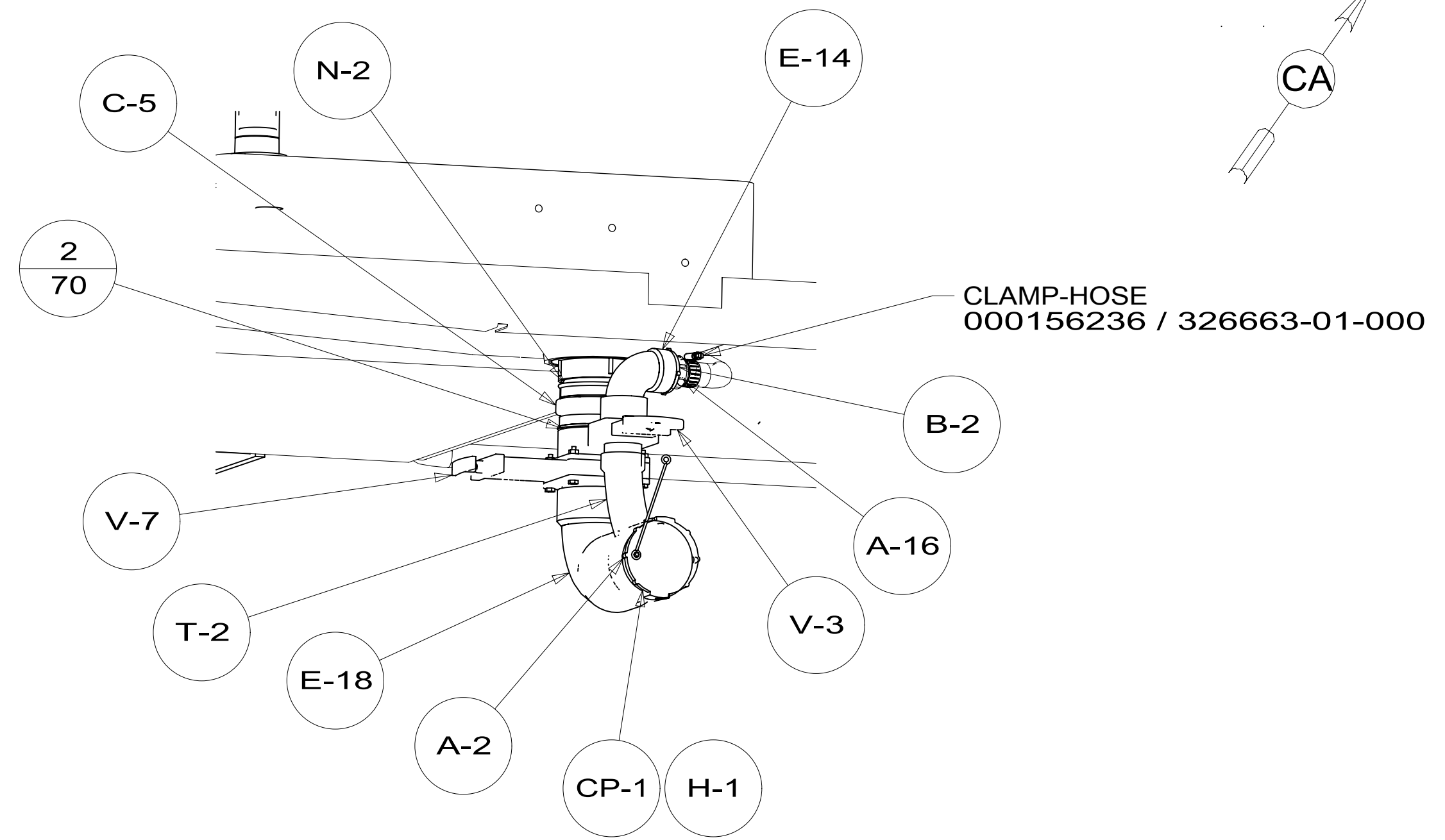
TANK ASM-HOLDING, 49 GAL  
000175211 / 332455-01-000

BRACKET-ANGLE, W/HOLES  
094756-02-CHT

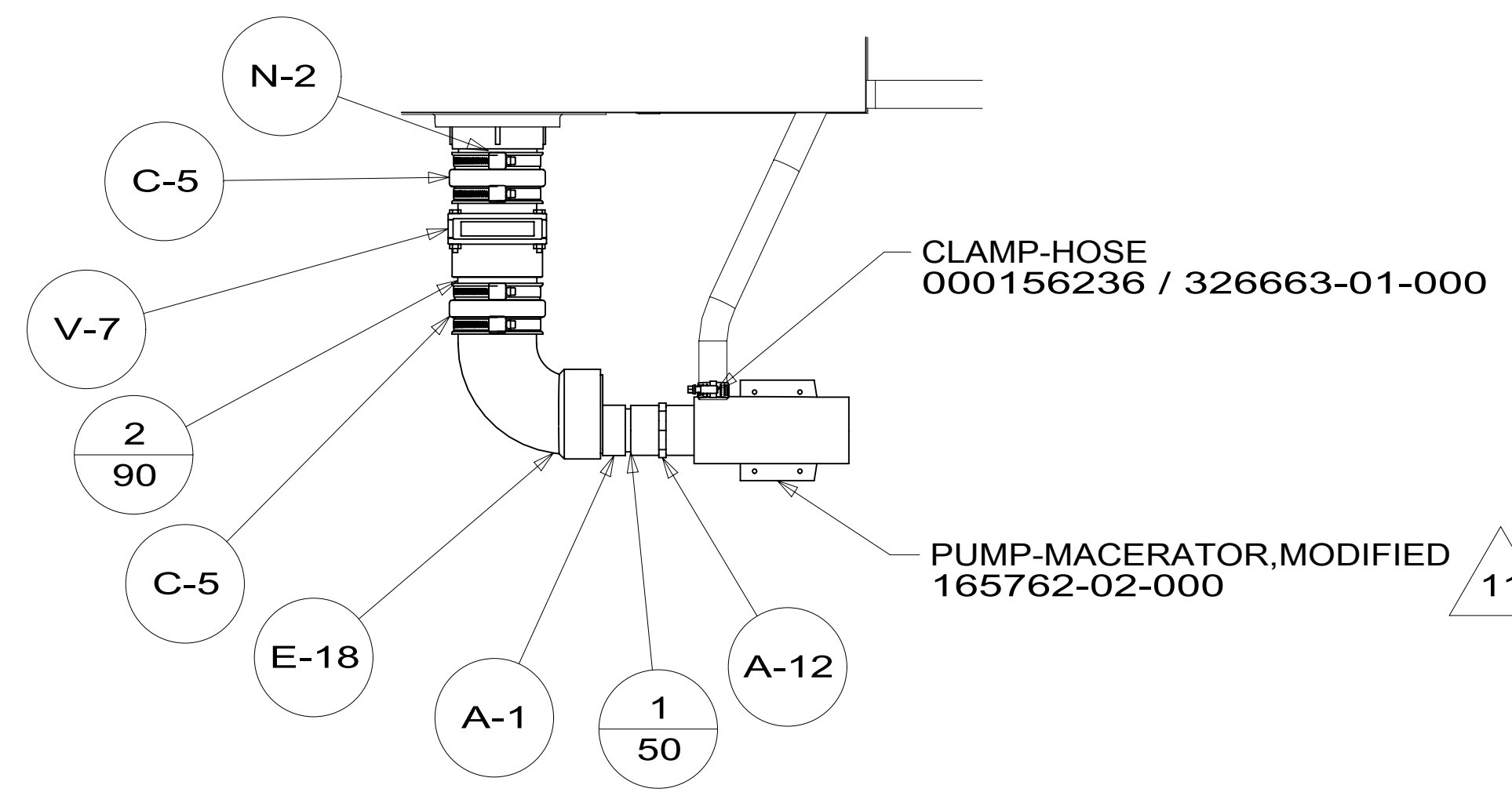
BRACKET-HOLDING TANK  
126796-04-CHT

PANEL-CLOSEOUT  
000175315 / 332484-01-CHT

425



VIEW CA



VIEW CB

DESCRIPTION: <b>DRAINAGE SYSTEM INSTL</b>		
SHEET: 3 OF 3	ITEM/PART NO: 000177757 / 33303301000	REV