

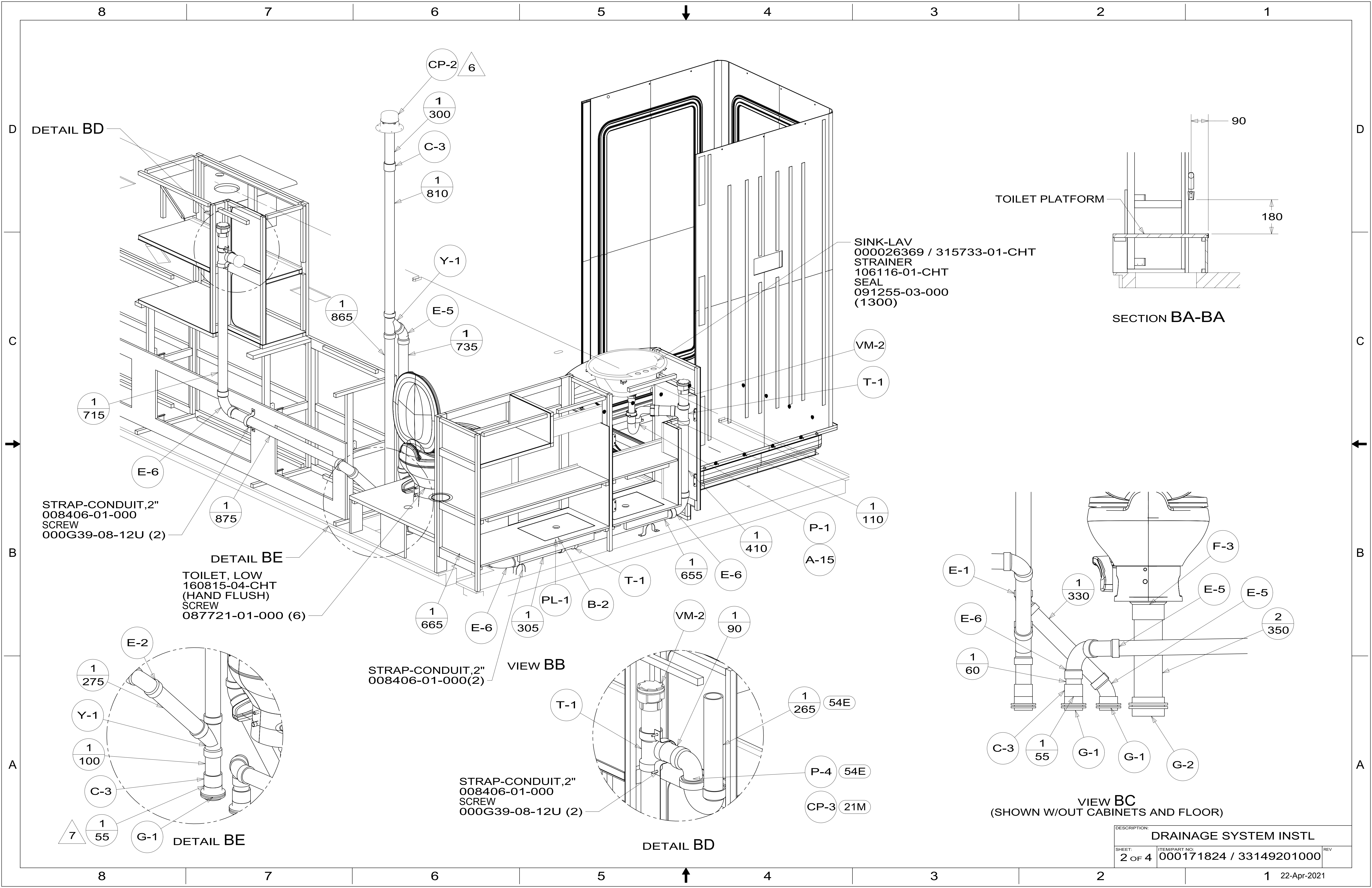
10. USE TEFLON TAPE 010405-01-000 FOR PUMP TO A-12 CONNECTION.
 9. SEE DRAWING 061607 FOR INSTALLATION OF GROMMETS.
 8. SECURE DRAINAGE PIPES TO CABINET USING WIRE TIE 108046-02-000, AND SCREW 000G67-10-12U AT INTERVALS OF NOT OF NOT MORE THAN 4 FEET APART.
 7. SECURE VENT PIPE TO TANK WITH CLAMP 000156237 / 326663-02-000.
 6. VENT PIPE MUST PROJECT 51 MIN AND 64 MAX ABOVE ROOF FOR PROPER FIT AND FUNCTION. ADD S-1 (000156099 / 326607-01-CHT SEAL-VENT PIPE) AROUND PIPE ON ROOF BEFORE VENT CAP IS INSTALLED.
 5. SEAL AROUND SHOWER WITH SILICONE.
 4. USE SMOOTH PLUMBERS PUTTY 167459-01-000 TO SEAL STRAINER (0.2 PER STRAINER).
 3. ALL PIPE AND FITTINGS TO BE ASSEMBLED WITH SOLVENT 004020-01-000 (USA), 004020-02-000 (CAN)
 2. SLOPE OF TRAP ARM MUST BE 6 PER 305 mm.
 1. SLOPE OF HORIZONTAL PIPING TO BE MINIMUM OF 3 PER 305 mm.

- 21M WASHER/DRYER PREP
 54E WASHER/DRYER COMBO

X-X
 FOR DRAINAGE CALLOUTS SEE DWG NO. 000211962 / 303370-01-000

 COPYRIGHT 2018 WINNEBAGO INDUSTRIES, INC.		
DSNR:	ALL DIMENSIONS ARE IN MILLIMETERS	
DIFTR:		
UNSPECIFIED TOLERANCES:	MATERIAL:	
WHOLE DIM (X) :	3	
ONE-PLACE (X.X) :	1.5	
TWO-PLACE (X.XX) :	0.50	
ANGLE :	1°	
REFER TO ES0018 FOR FASTENER TIGHTENING GUIDELINES	WEIGHT: (LBS)	FIRST USED: (REF)
		20 F35F
DESCRIPTION:		
DRAINAGE SYSTEM INSTL		
SHEET:	ITEM/PART NO.:	REV:
1 OF 4	000171824 / 33149201000	
REF:		1 22-Apr-2021

NOTES:



DETAIL BD

TOILET PLATFORM

SECTION BA-BA

SINK-LAV
 00026369 / 315733-01-CHT
 STRAINER
 106116-01-CHT
 SEAL
 091255-03-000
 (1300)

STRAP-CONDUIT, 2"
 008406-01-000
 SCREW
 000G39-08-12U (2)

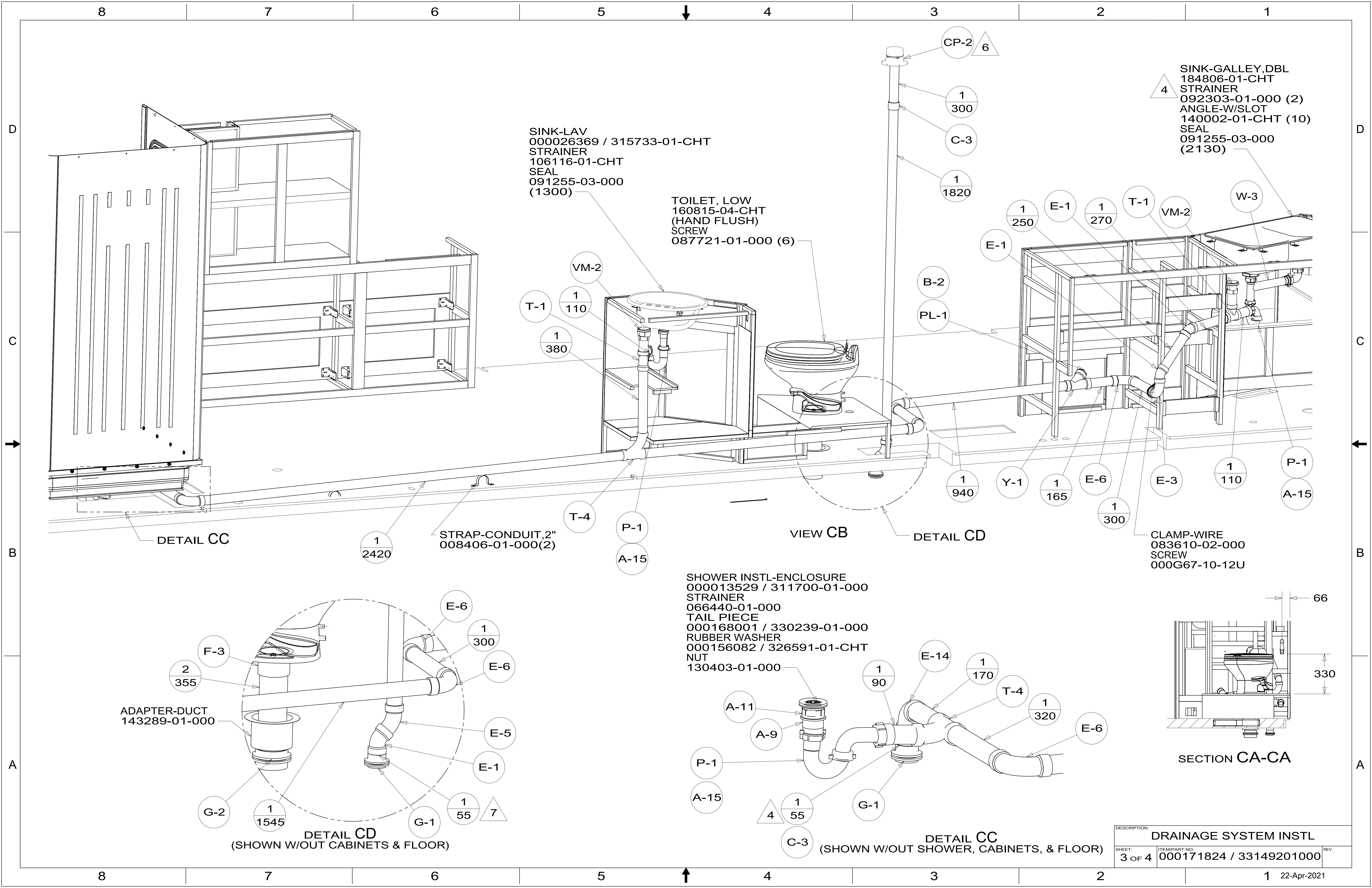
DETAIL BE
 TOILET, LOW
 160815-04-CHT
 (HAND FLUSH)
 SCREW
 087721-01-000 (6)

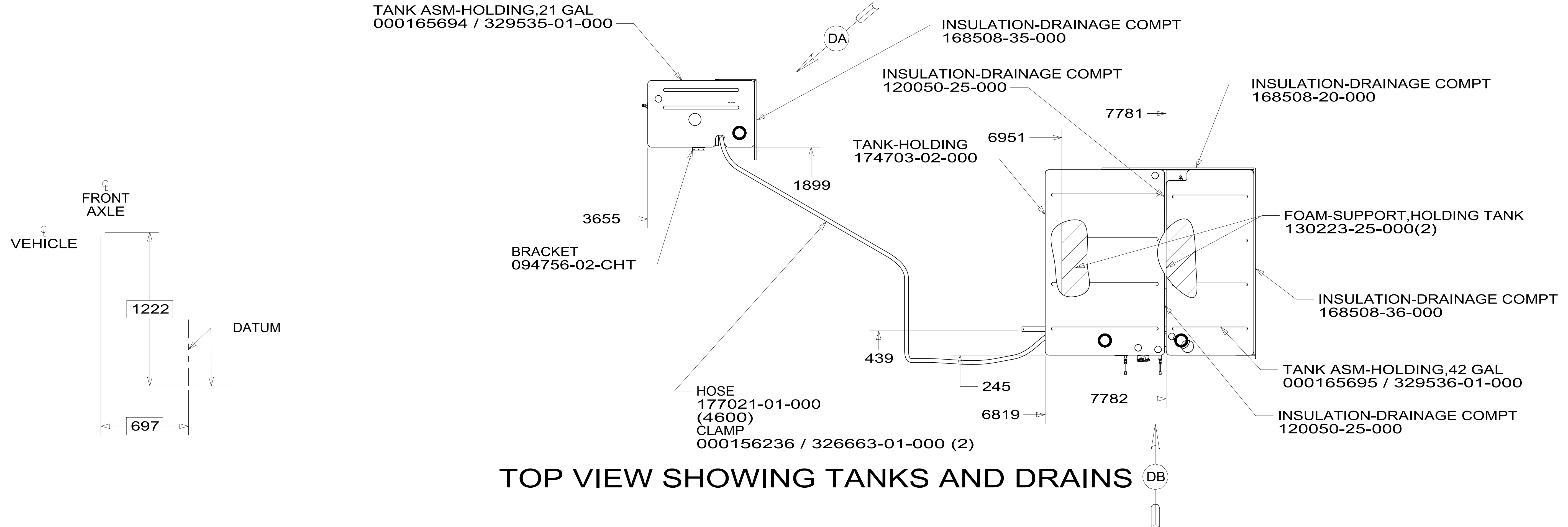
STRAP-CONDUIT, 2"
 008406-01-000(2)

STRAP-CONDUIT, 2"
 008406-01-000
 SCREW
 000G39-08-12U (2)

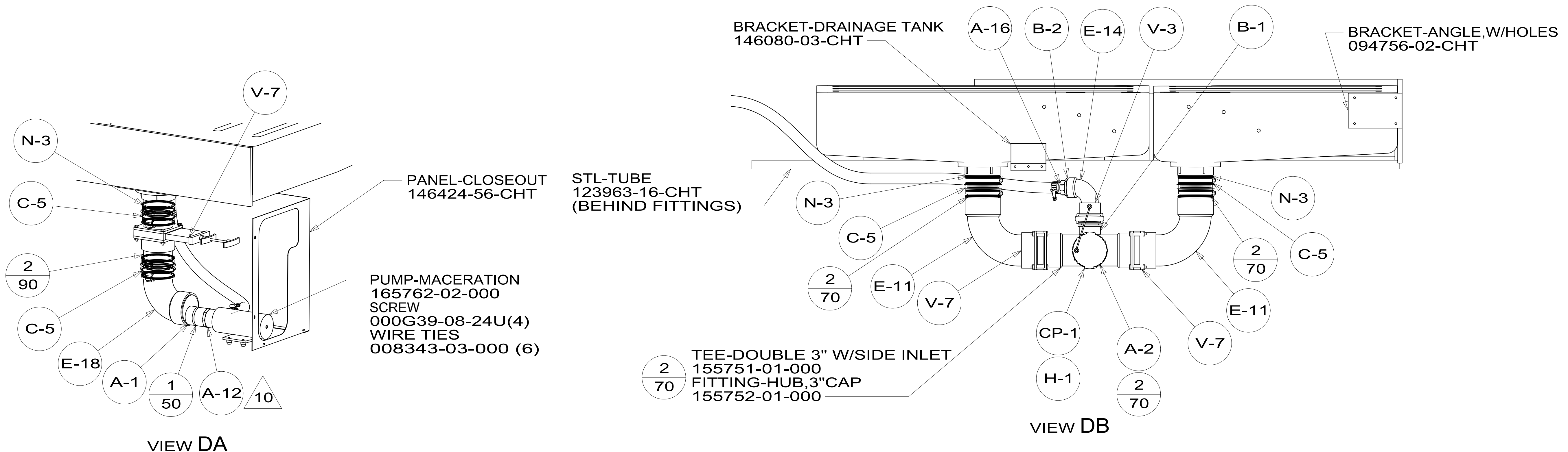
VIEW BC
 (SHOWN W/OUT CABINETS AND FLOOR)

DESCRIPTION:		
DRAINAGE SYSTEM INSTL		
SHEET:	ITEM/PART NO.:	REV
2 OF 4	000171824 / 33149201000	





TOP VIEW SHOWING TANKS AND DRAINS



VIEW DA

VIEW DB

DESCRIPTION:		
DRAINAGE SYSTEM INSTL		
SHEET:	ITEM/PART NO.:	REV
4 OF 4	000171824 / 33149201000	