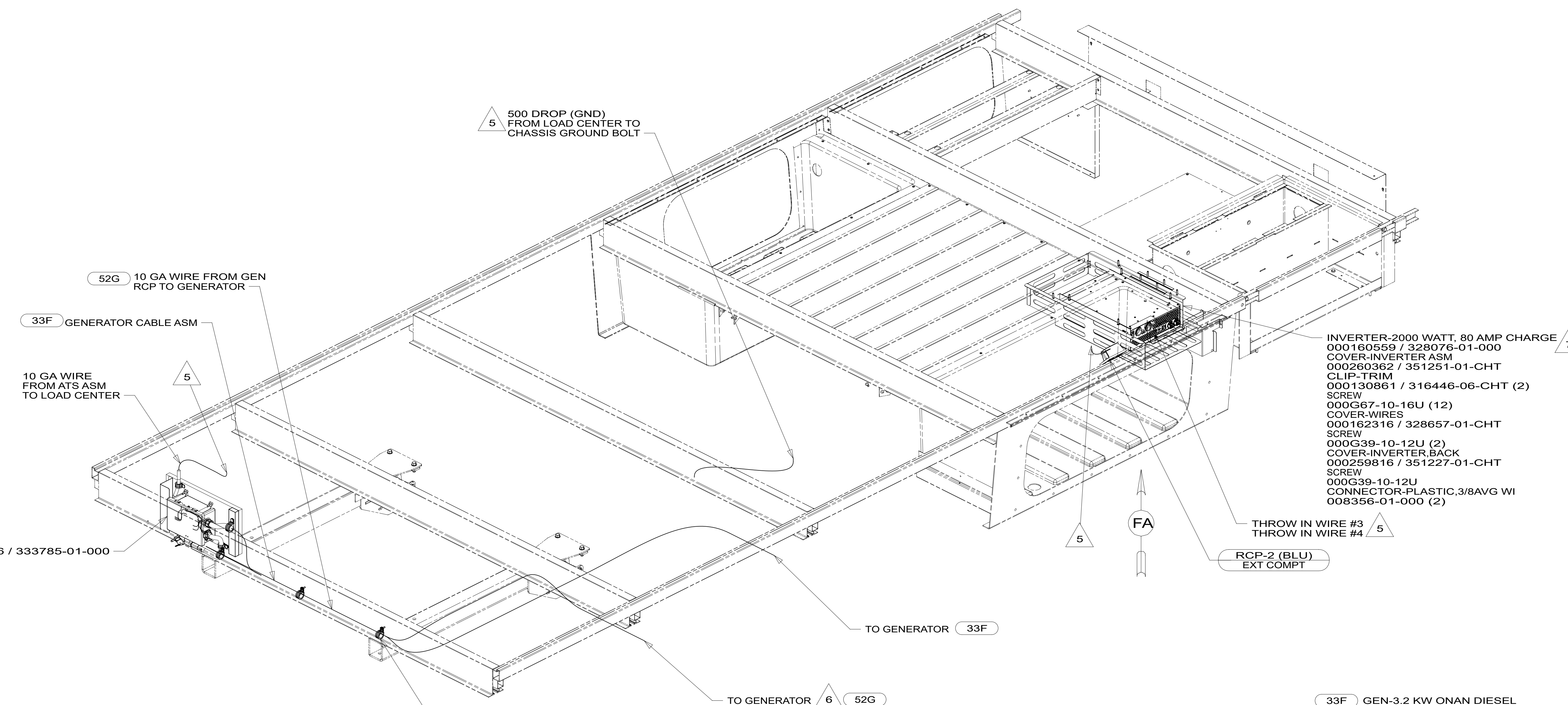


8 7 6 5 4 3 2 1

D  
C  
B  
A



- 7 SEE COMPONENT DRAWING FOR TORQUE SPECIFICATIONS.
- 6 SEE GENERATOR INSTL FOR ADDITIONAL INFORMATION.
- 5 WIRE ROUTED THROUGH FLOOR AT THIS POINT.
4. SEE WIRING DIAGRAM-BODY,110V FOR ADDITIONAL INFORMATION.
3. ALL GROUND WIRE TO BE COVERED WITH TUBING 8041-02-000.
2. ALL 110V WIRE TO BE CLAMPED WITH CLAMP 10497-05-000 WITHIN 200MM OF OUTLET BOXES, USE SCREW G67-10-12U.
1. AT MINIMUM ALL WIRES TO BE SUPPORTED AND SECURED PER CODE REQUIREMENTS. USE CLAMP 10495 OR 10497 OR WIRE TIE 8343 OR 108046 AND SCREW G67-XX-XXX OR G56-XX-XXX AS APPROPRIATE FOR INSTALLATION.

NOTES:

- INVERTER-2000 WATT, 80 AMP CHARGE  
000160559 / 328076-01-000
- COVER-INVERTER ASM  
000260362 / 351251-01-CHT
- CLIP-TRIM  
000130861 / 316446-06-CHT (2)
- SCREW  
000G67-10-16U (12)
- COVER-WIRES  
000162316 / 328657-01-CHT
- SCREW  
000G39-10-12U (2)
- COVER-INVERTER, BACK  
000259816 / 351227-01-CHT
- SCREW  
000G39-10-12U
- CONNECTOR-PLASTIC, 3/8AVG WI  
008356-01-000 (2)

- 33F GEN-3.2 KW ONAN DIESEL
- 52G GEN-3.6KW ONAN LP MICROQUIET
- 265 CODES/STANDARDS-CSA/CMVSS
- 1B1 CODES/STANDARDS USA

1B1 265

**WINNEBAGO**  
COPYRIGHT 2023 WINNEBAGO INDUSTRIES, INC.

DSNR:	ALL DIMENSIONS ARE IN MILLIMETERS	
DFFR:		
UNSPECIFIED TOLERANCES:	MATERIAL:	
WHOLE DIM (X) :	3	
ONE-PLACE (X.X) :	1.5	
TWO-PLACE (X.XX) :	0.50	
ANGLE :	1°	
REFER TO ES0018 FOR FASTENER TIGHTENING GUIDELINES	WEIGHT: (LBS)	FIRST USED: <b>20 524D</b>
DESCRIPTION: <b>WIRING INSTL-BODY,110V</b>		
SHEET: <b>1 OF 7</b>	ITEM/PART NO: <b>000210426 / 33992101000</b>	REV:

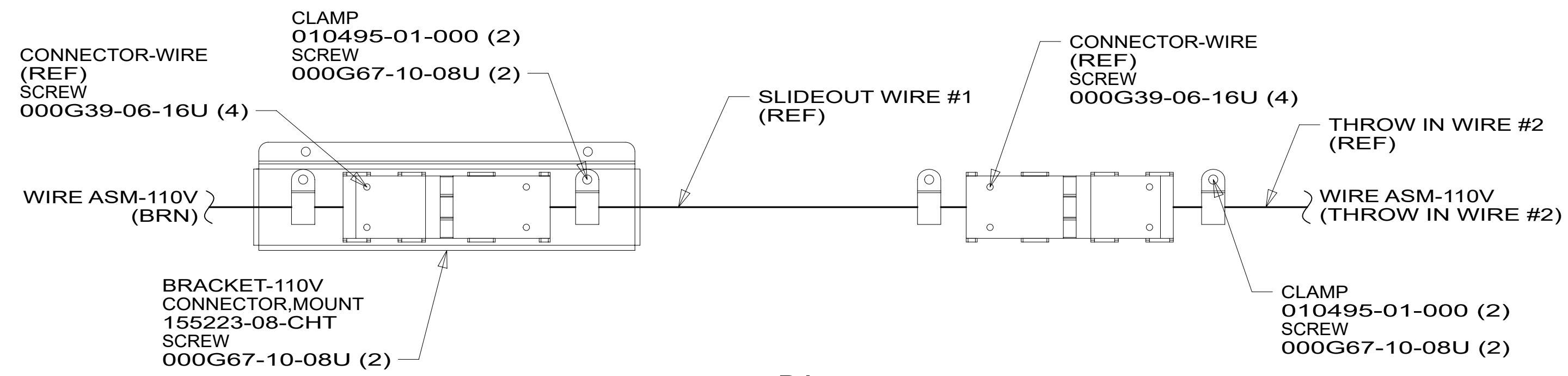
CC	INDICATES A CRITICAL CHARACTERISTIC. ENSURE PROPER PROCEDURES ARE FOLLOWED.
SC	INDICATES A SIGNIFICANT CHARACTERISTIC. ENSURE PROPER PROCEDURES ARE FOLLOWED.
KC	INDICATES A KEY CHARACTERISTIC. ENSURE PROPER PROCEDURES ARE FOLLOWED.

FOR ELECTRICAL TORQUE SPECIFICATIONS SEE DWG NO. 128783-01-000

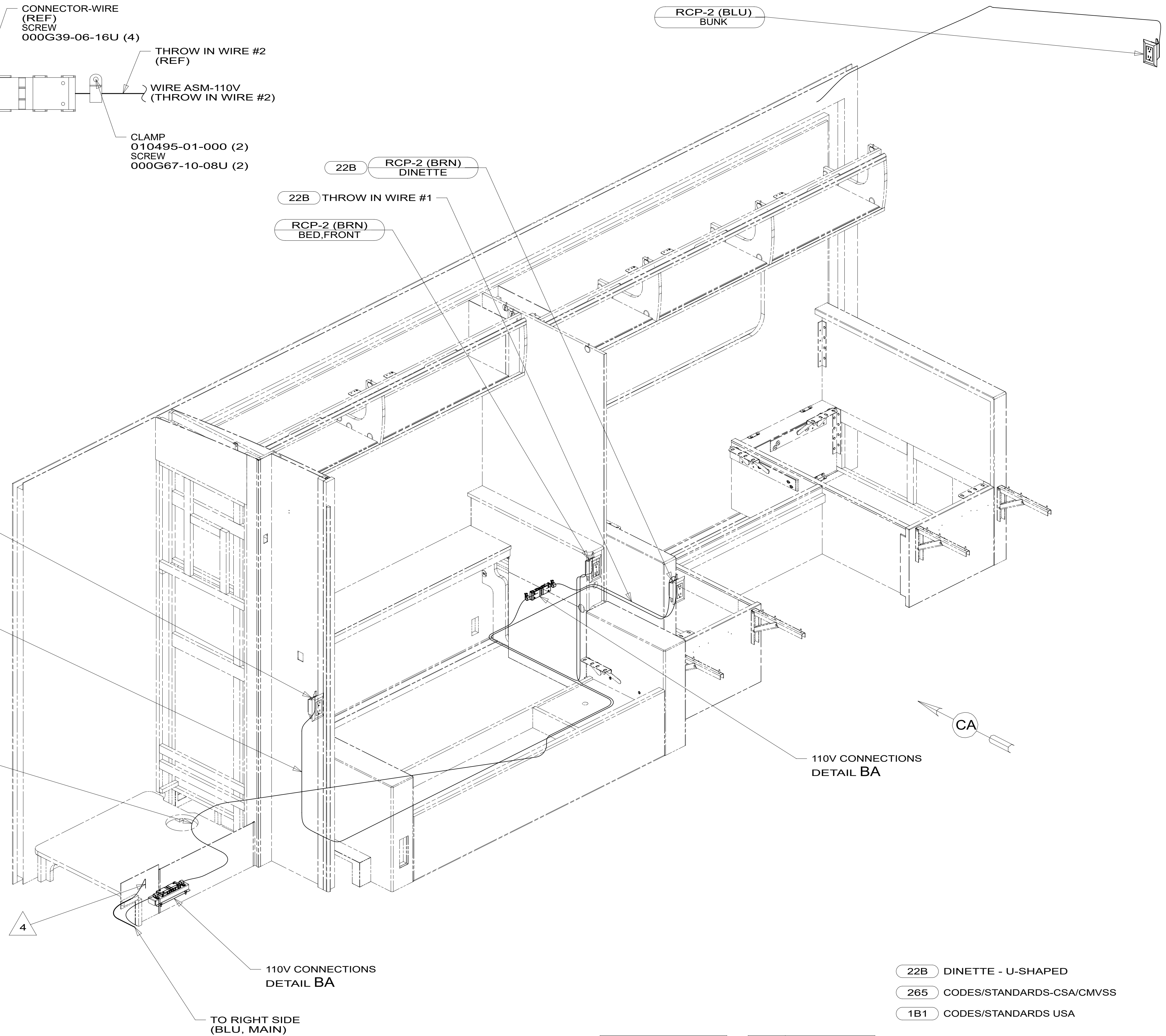
FOR ELECTRICAL CALLOUTS SEE DWG 000228177 344479-01-000

8 7 6 5 4 3 2 1

D  
C  
B  
A



DETAIL BA



- NOTES:
- 4 WIRE ROUTED THROUGH FLOOR AT THIS POINT.
  - 3. ALL GROUND WIRE TO BE COVERED WITH TUBING 8041-02-000.
  - 2. ALL 110V WIRE TO BE CLAMPED WITH CLAMP 10497-05-000 WITHIN 200MM OF OUTLET BOXES, USE SCREW G67-10-12U.
  - 1. AT MINIMUM ALL WIRES TO BE SUPPORTED AND SECURED PER CODE REQUIREMENTS. USE CLAMP 10495 OR 10497 OR WIRE TIE 8343 OR 108046 AND SCREW G67-XX-XXX OR G56-XX-XXX AS APPROPRIATE FOR INSTALLATION.

FOR ELECTRICAL TORQUE SPECIFICATIONS SEE DWG NO. 128783-01-000

FOR ELECTRICAL CALLOUTS SEE DWG 000228177 344479-01-000

- 22B DINETTE - U-SHAPED
- 265 CODES/STANDARDS-CSA/CMVSS
- 1B1 CODES/STANDARDS USA

DESCRIPTION:		1B1 265	
<b>WIRING INSTL-BODY, 110V</b>			
SHEET:	ITEM/PART NO.:	REV:	
2 OF 7	000210426 / 33992101000		

8

7

6

5

4

3

2

1

D

D

C

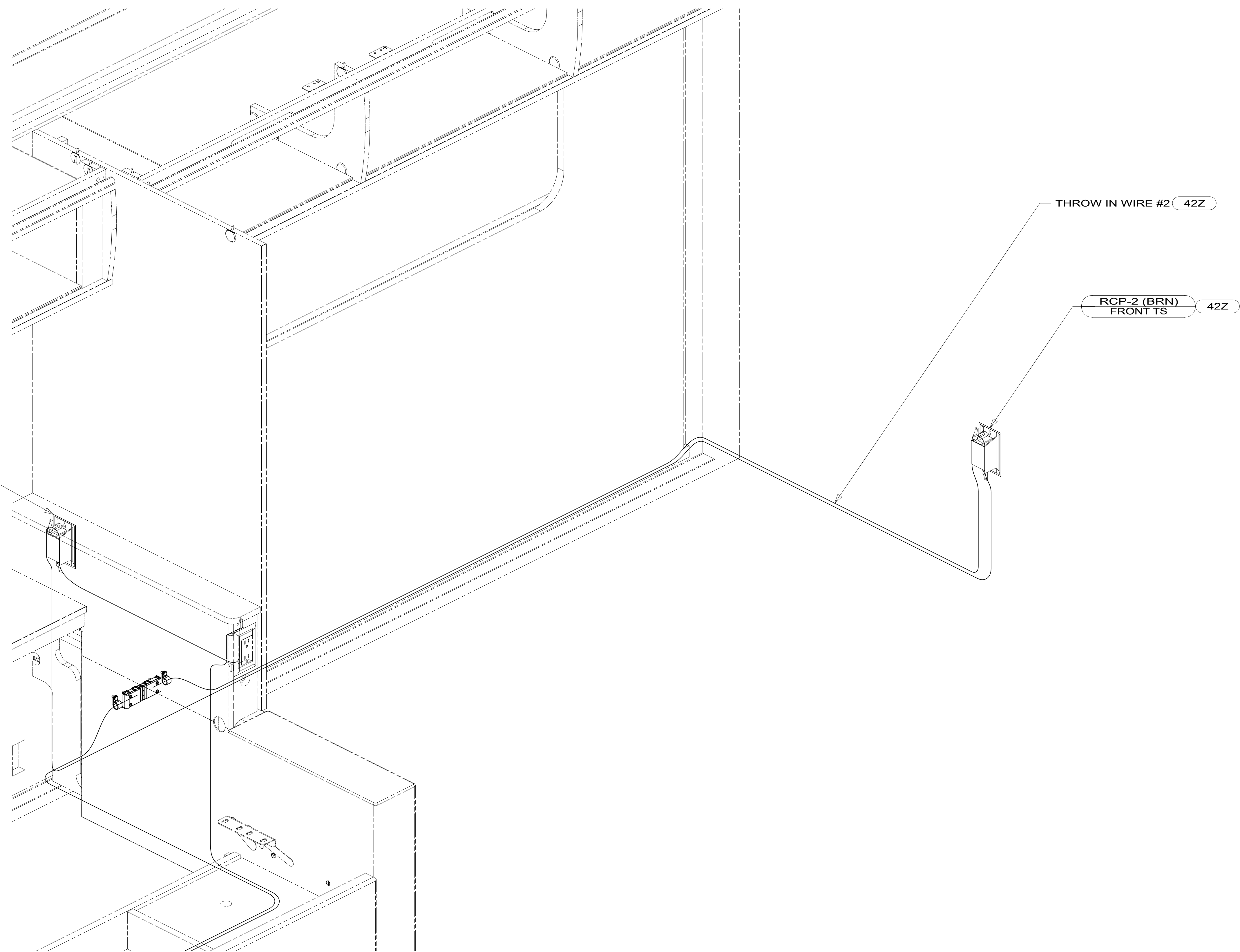
C

B

B

A

A



- NOTES:
1. AT MINIMUM ALL WIRES TO BE SUPPORTED AND SECURED PER CODE REQUIREMENTS. USE CLAMP 10495 OR 10497 OR WIRE TIE 8343 OR 108046 AND SCREW G67-XX-XXX OR G56-XX-XXX AS APPROPRIATE FOR INSTALLATION.
  2. ALL 110V WIRE TO BE CLAMPED WITH CLAMP 10497-05-000 WITHIN 200MM OF OUTLET BOXES, USE SCREW G67-10-12U.
  3. ALL GROUND WIRE TO BE COVERED WITH TUBING 8041-02-000.

VIEW CA

FOR ELECTRICAL TORQUE SPECIFICATIONS SEE DWG NO. 128783-01-000

FOR ELECTRICAL CALLOUTS SEE DWG 000228177 344479-01-000

- 42Z THEATER SEATING
- 265 CODES/STANDARDS-CSA/CMVSS
- 1B1 CODES/STANDARDS USA

DESCRIPTION:		1B1 265
<b>WIRING INSTL-BODY,110V</b>		
SHEET:	ITEM/PART NO.:	REV
3 OF 7	000210426 / 33992101000	

8

7

6

5

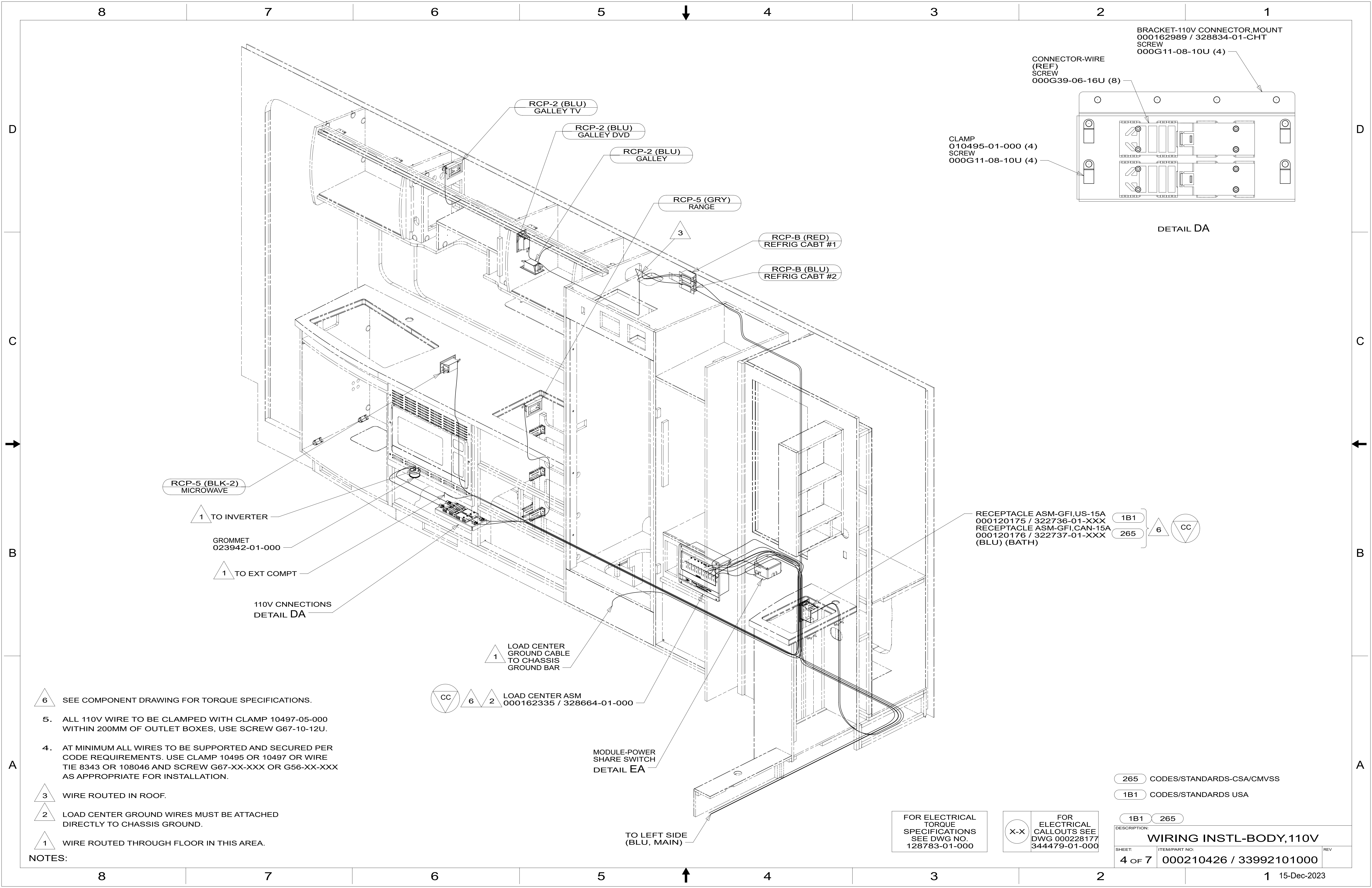
4

3

2

1

15-Dec-2023



RCP-5 (BLK-2)  
MICROWAVE

1 TO INVERTER

GROMMET  
023942-01-000

1 TO EXT COMPT

110V CNNECTIONS  
DETAIL DA

1 LOAD CENTER  
GROUND CABLE  
TO CHASSIS  
GROUND BAR

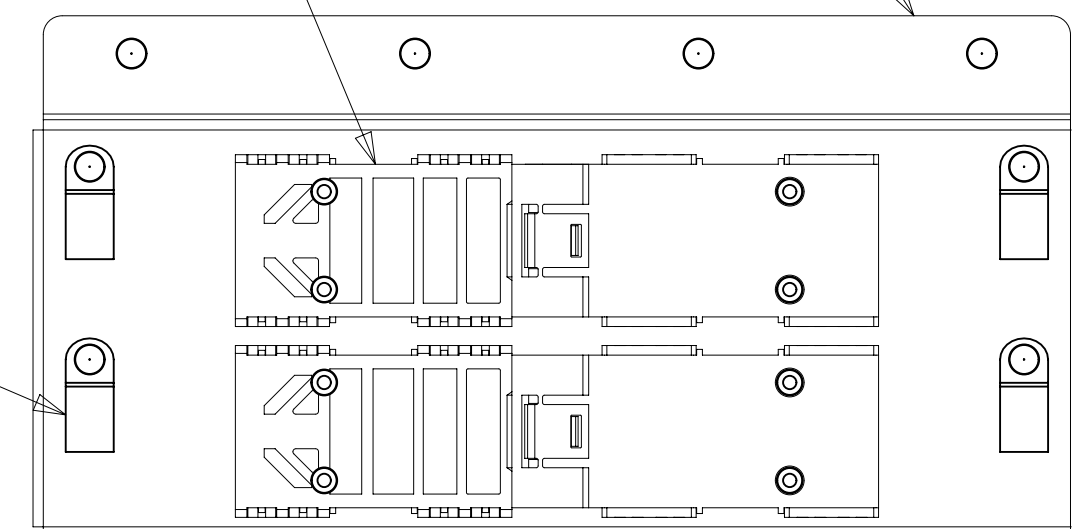
CC 6 2 LOAD CENTER ASM  
000162335 / 328664-01-000

MODULE-POWER  
SHARE SWITCH  
DETAIL EA

TO LEFT SIDE  
(BLU, MAIN)

CONNECTOR-WIRE  
(REF)  
SCREW  
000G39-06-16U (8)

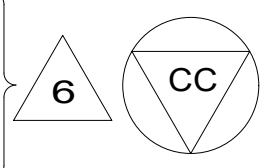
BRACKET-110V CONNECTOR.MOUNT  
000162989 / 328834-01-CHT  
SCREW  
000G11-08-10U (4)



DETAIL DA

RECEPTACLE ASM-GFI,US-15A  
000120175 / 322736-01-XXX  
RECEPTACLE ASM-GFI,CAN-15A  
000120176 / 322737-01-XXX  
(BLU) (BATH)

1B1  
265



6 SEE COMPONENT DRAWING FOR TORQUE SPECIFICATIONS.

5. ALL 110V WIRE TO BE CLAMPED WITH CLAMP 10497-05-000  
WITHIN 200MM OF OUTLET BOXES, USE SCREW G67-10-12U.

4. AT MINIMUM ALL WIRES TO BE SUPPORTED AND SECURED PER  
CODE REQUIREMENTS. USE CLAMP 10495 OR 10497 OR WIRE  
TIE 8343 OR 108046 AND SCREW G67-XX-XXX OR G56-XX-XXX  
AS APPROPRIATE FOR INSTALLATION.

3 WIRE ROUTED IN ROOF.

2 LOAD CENTER GROUND WIRES MUST BE ATTACHED  
DIRECTLY TO CHASSIS GROUND.

1 WIRE ROUTED THROUGH FLOOR IN THIS AREA.

NOTES:

FOR ELECTRICAL  
TORQUE  
SPECIFICATIONS  
SEE DWG NO.  
128783-01-000

FOR  
ELECTRICAL  
CALLOUTS SEE  
DWG 000228177  
344479-01-000

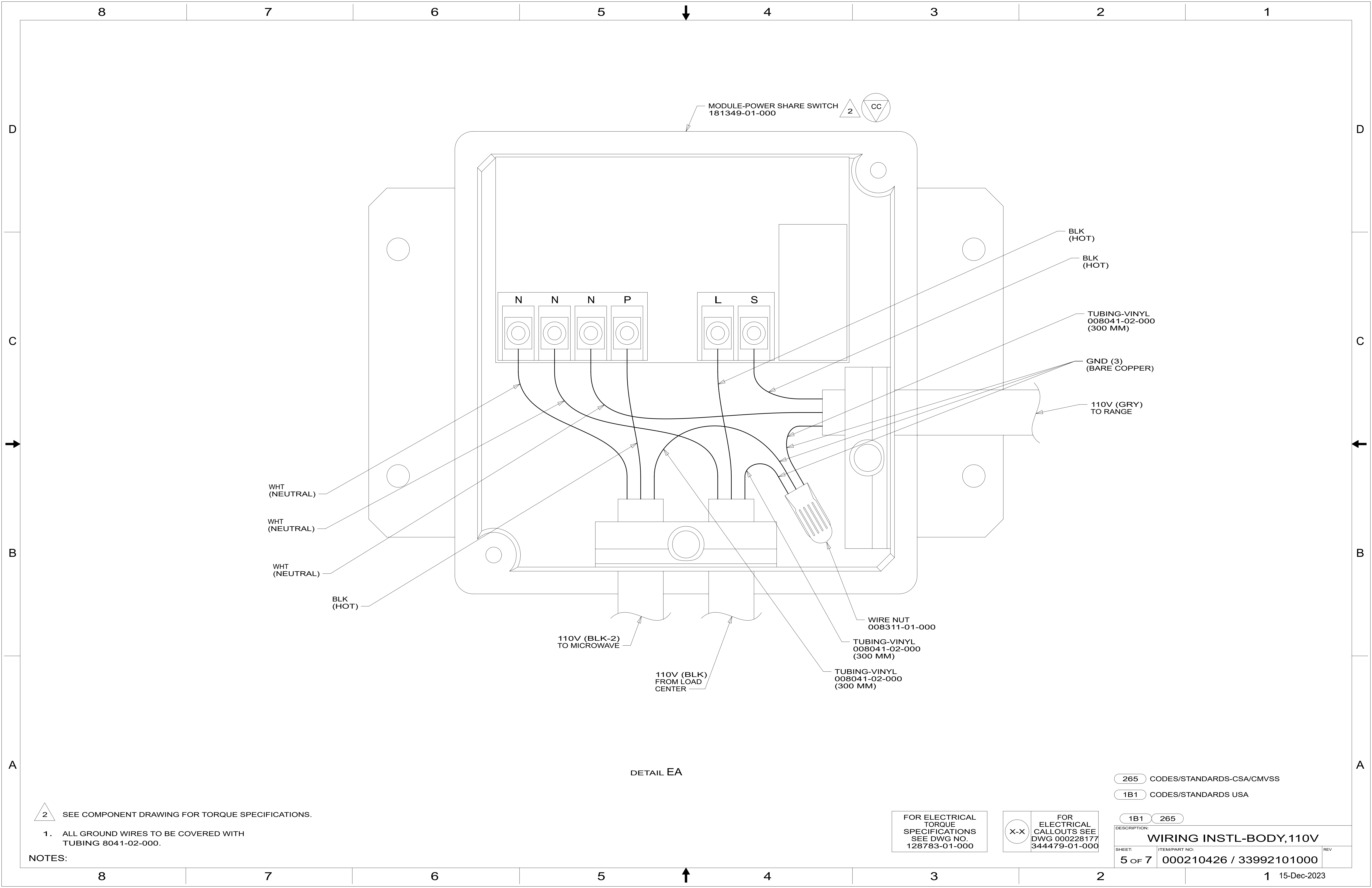
265 CODES/STANDARDS-CSA/CMVSS

1B1 CODES/STANDARDS USA

1B1 265

DESCRIPTION:  
**WIRING INSTL-BODY,110V**

SHEET: 4 OF 7 ITEM/PART NO: 000210426 / 33992101000 REV



DETAIL EA

2 SEE COMPONENT DRAWING FOR TORQUE SPECIFICATIONS.

1. ALL GROUND WIRES TO BE COVERED WITH TUBING 8041-02-000.

NOTES:

FOR ELECTRICAL TORQUE SPECIFICATIONS SEE DWG NO. 128783-01-000

FOR ELECTRICAL CALLOUTS SEE DWG 000228177 344479-01-000

265 CODES/STANDARDS-CSA/CMVSS

1B1 CODES/STANDARDS USA

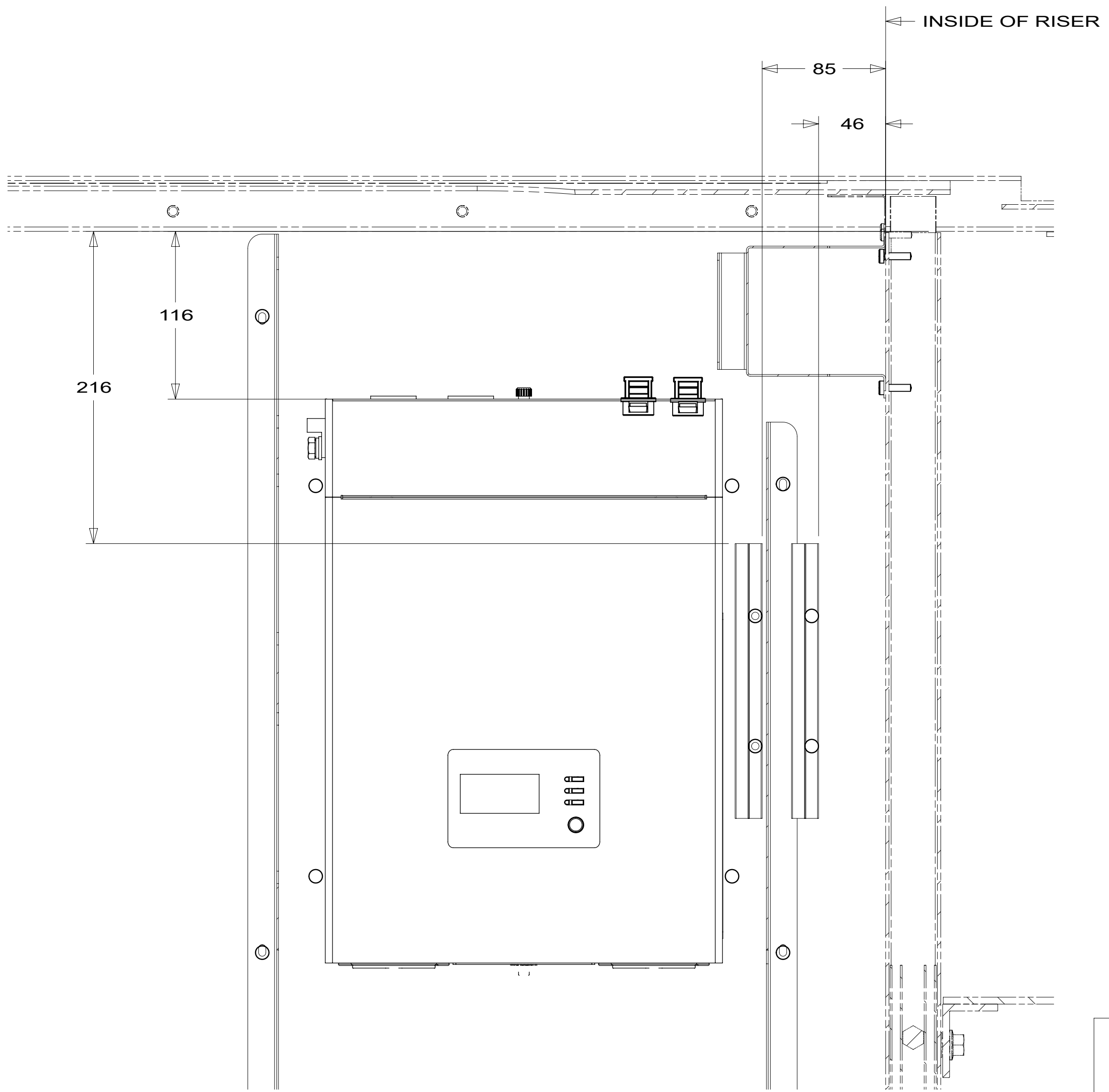
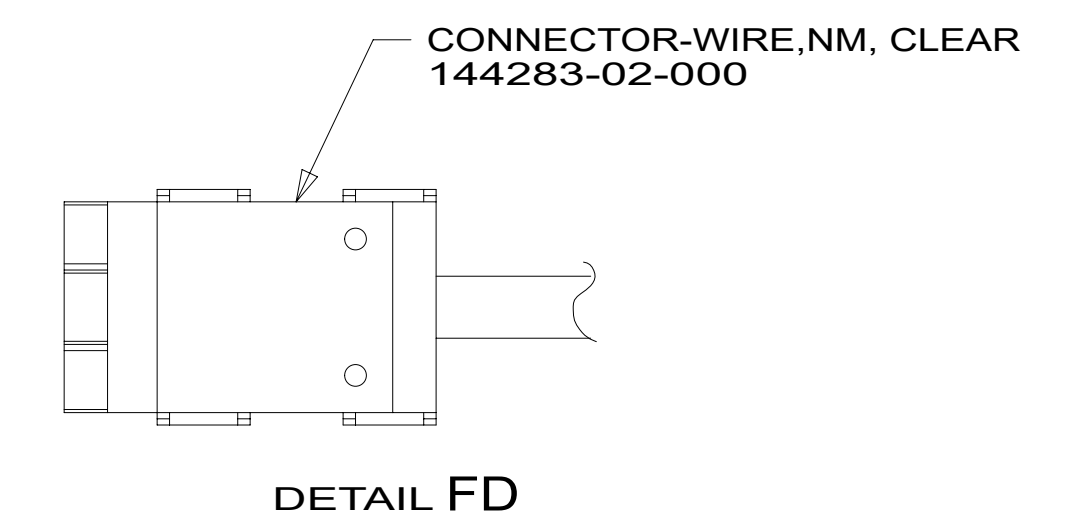
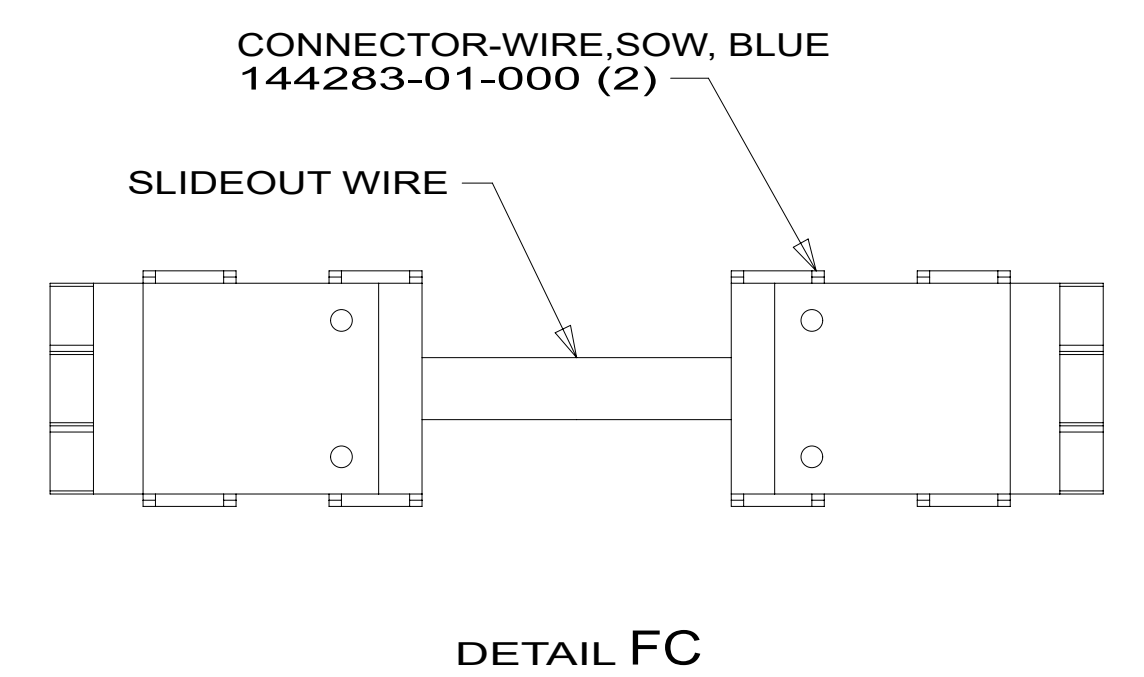
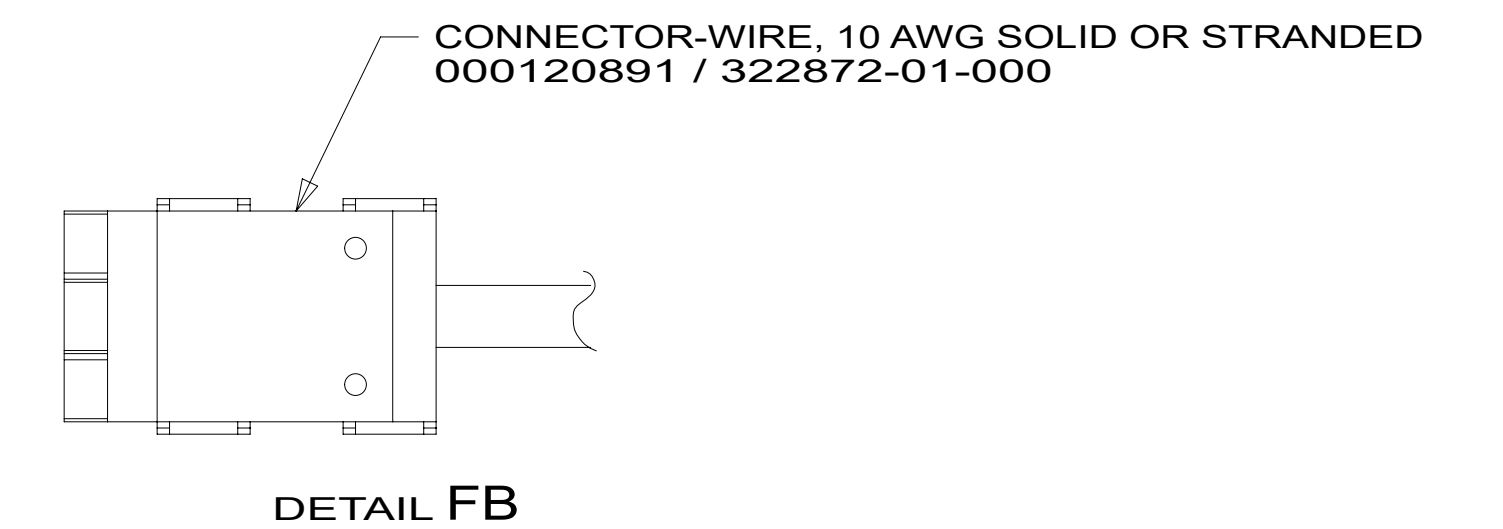
1B1 265

DESCRIPTION: WIRING INSTL-BODY, 110V

SHEET: 5 OF 7 ITEM/PART NO.: 000210426 / 33992101000 REV

RED	1B1	136135-07-032	
	265	136136-07-032	
BLK	1B1	136135-06-010	
	265	136136-06-010	
BLK-2	1B1	136135-22-046	
	265	136136-22-046	
GRY	1B1	136135-15-044	
	265	136136-15-044	
BRN	1B1	136131-03-046	2
	265	136134-03-046	2
BLU	1B1	136131-02-168	
	265	136134-02-168	
ORG	1B1	136137-01-042	8 6
	265	136138-01-042	8 6
ORG-2	1B1	136137-01-042	8 7
	265	136138-01-042	8 7
MAIN	1B1	136137-01-048	
	265	136138-01-048	
GENERATOR CABLE ASM	1B1	164957-02-044	33F
	265	164957-04-044	33F

THROW IN WIRE #1	1B1	136131-03-039	2 22B
	265	136134-03-039	2 22B
THROW IN WIRE #2	1B1	136131-03-085	2 42Z
	265	136134-03-085	2 42Z
THROW IN WIRE #3	1B1	136137-01-012	8 6
	265	136138-01-012	8 6
THROW IN WIRE #4	1B1	136137-01-012	8 7
	265	136138-01-012	8 7
THROW IN WIRE #5	1B1	136131-03-039	
	265	136134-03-039	
SLIDEOUT WIRE #1		136151-03-046	4 5
GROUND		136145-02-036	3



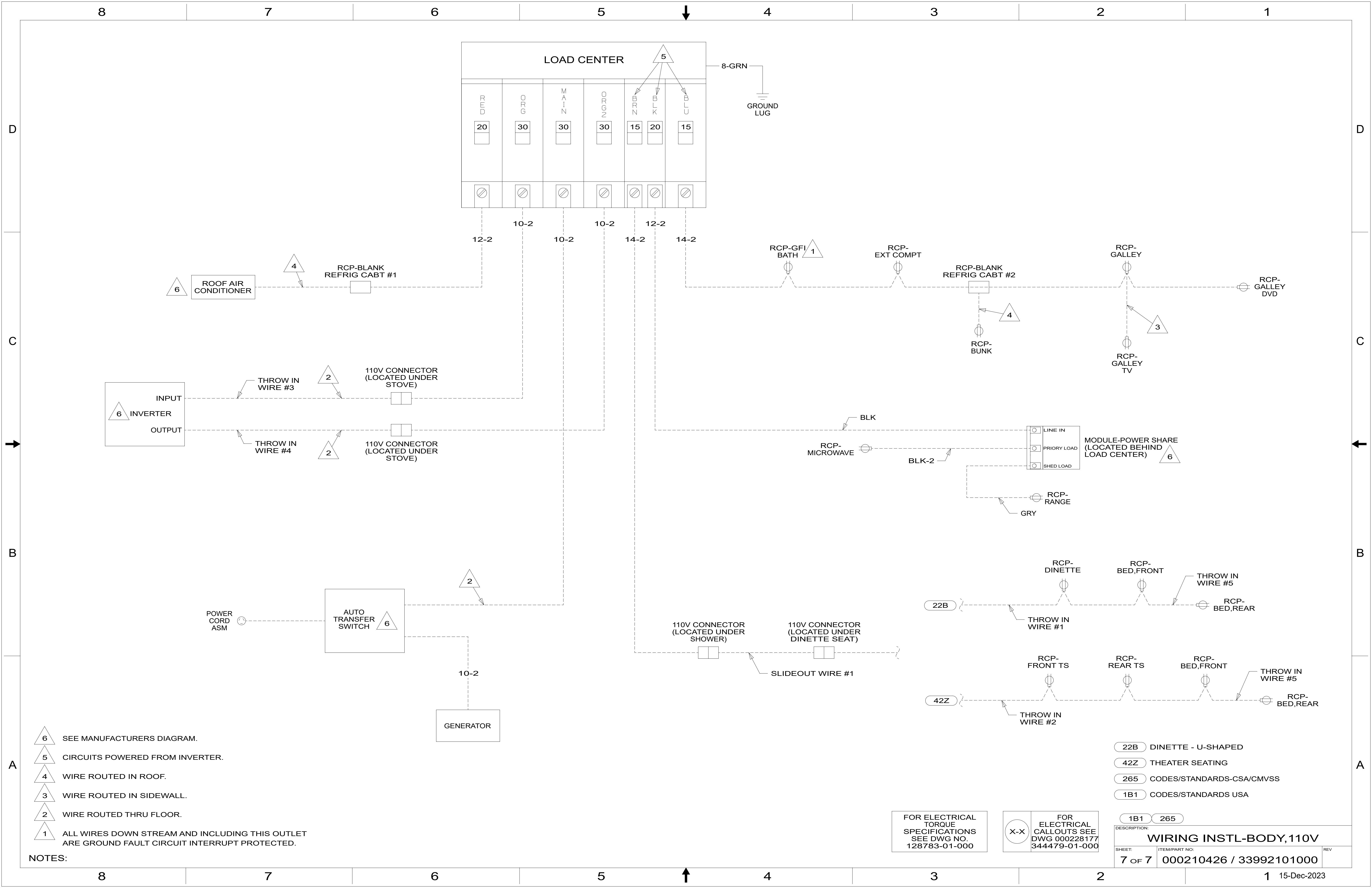
- 8 FOR CONNECTOR INSTALLATION SEE DETAIL FB.
  - 7 MARK CABLE WITH (2) WRAPS OF ORG TAPE.
  - 6 MARK CABLE WITH (1) WRAP OF ORG TAPE.
  - 5 APPLY CONDUIT-CONVOLUTE 41953-05-000 OVER WIRE AND SECURE BOTH ENDS OF TUBING TO WIRE WITH TAPE 8363-01-000.
  - 4 FOR CONNECTOR INSTALLATION SEE DETAIL FC.
  - 3 ONE GROUND WIRE GOES TO DISTRIBUTION PANEL-12V.
  - 2 FOR CONNECTOR INSTALLATION SEE DETAIL FD.
1. ALL GROUND WIRES TO BE COVERED WITH TUBING 8041-02-000.

- 22B DINETTE - U-SHAPED
- 42Z THEATER SEATING
- 33F GEN-3.2 KW ONAN DIESEL
- 265 CODES/STANDARDS-CSA/CMVSS
- 1B1 CODES/STANDARDS USA

FOR ELECTRICAL TORQUE SPECIFICATIONS SEE DWG NO. 128783-01-000

FOR ELECTRICAL CALLOUTS SEE DWG 000228177 344479-01-000

DESCRIPTION:	1B1 265
<b>WIRING INSTL-BODY, 110V</b>	
SHEET:	6 OF 7
ITEM/PART NO.:	000210426 / 33992101000
REV:	



- NOTES:
- 6 SEE MANUFACTURERS DIAGRAM.
  - 5 CIRCUITS POWERED FROM INVERTER.
  - 4 WIRE ROUTED IN ROOF.
  - 3 WIRE ROUTED IN SIDEWALL.
  - 2 WIRE ROUTED THRU FLOOR.
  - 1 ALL WIRES DOWN STREAM AND INCLUDING THIS OUTLET ARE GROUND FAULT CIRCUIT INTERRUPT PROTECTED.

FOR ELECTRICAL TORQUE SPECIFICATIONS SEE DWG NO. 128783-01-000

FOR ELECTRICAL CALLOUTS SEE DWG 000228177 344479-01-000

- 22B DINETTE - U-SHAPED
- 42Z THEATER SEATING
- 265 CODES/STANDARDS-CSA/CMVSS
- 1B1 CODES/STANDARDS USA

DESCRIPTION:		1B1 265	
<b>WIRING INSTL-BODY, 110V</b>			
SHEET:	ITEM/PART NO.:	REV:	
7 OF 7	000210426 / 33992101000		