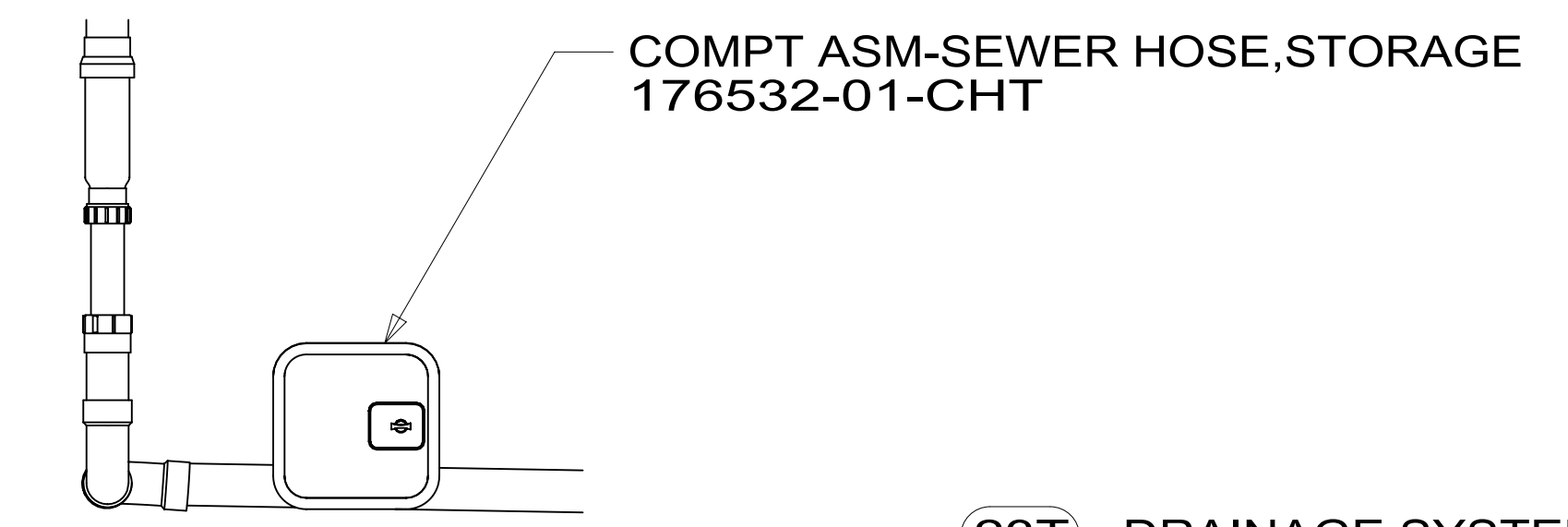


12. APPLY SEALANT TO THE BOTTOM OF SHOWER PAN IN A ZIG-ZAG PATTERN
11. ATTACH SEAL TO BRACE WHERE IT CONTACTS HEATER PAD.
10. PREP THE SURFACE PER MANUFACTURERS INSTRUCTIONS BEFORE APPLYING THE HEATING PAD.
9. SEE WIRING INSTL-BODY FOR ELECTRICAL CONNECTIONS.
8. NIPPLE TO BE TRIMMED TO LENGTH ON INSTALL.
7. SECURE VENT PIPE WITH CLAMP 000156237 / 326663-02-000.
6. VENT PIPE MUST PROJECT 51 MIN AND 64 MAX ABOVE ROOF FOR PROPER FIT AND FUNCTION.
5. SEAL AROUND SHOWER WITH SILICONE.
4. SECURE DRAINAGE PIPES TO CABINET USING WIRE TIE 108046-02-000, AND SCREW 000G67-10-12U AT INTERVALS OF NOT MORE THAN 4 FEET APART.
3. ALL PIPE AND FITTINGS TO BE ASSEMBLED WITH SOLVENT 004020-01-000 (USA), 004020-02-000 (CAN)
2. SLOPE OF TRAP ARM MUST BE 6 PER 305 mm.
1. SLOPE OF HORIZONTAL PIPING TO BE MINIMUM OF 3 PER 305 mm.

NOTES:



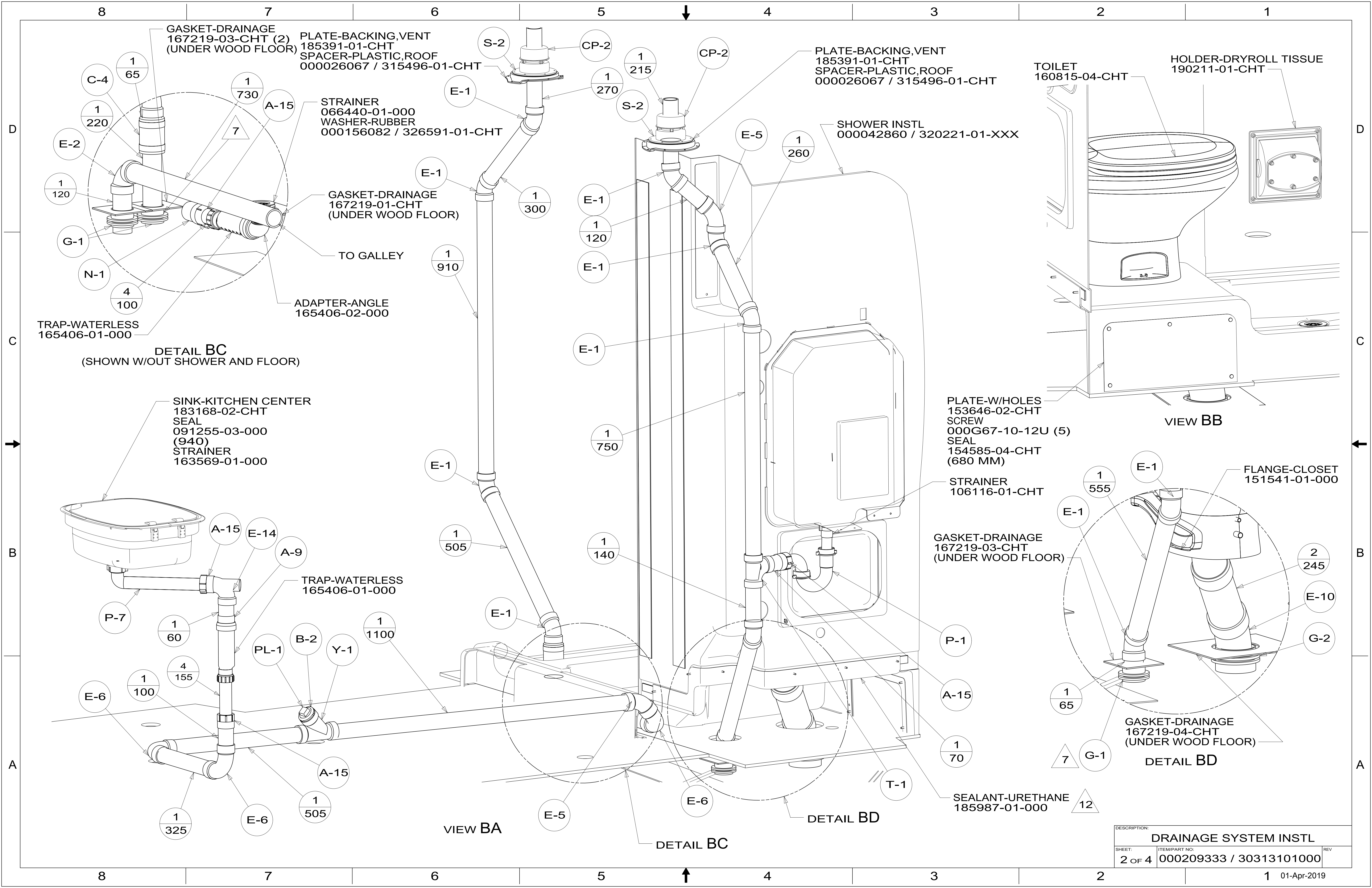
VIEW AA

X-X
FOR DRAINAGE CALLOUTS SEE DWG NO. 000211962 / 303370-01-000

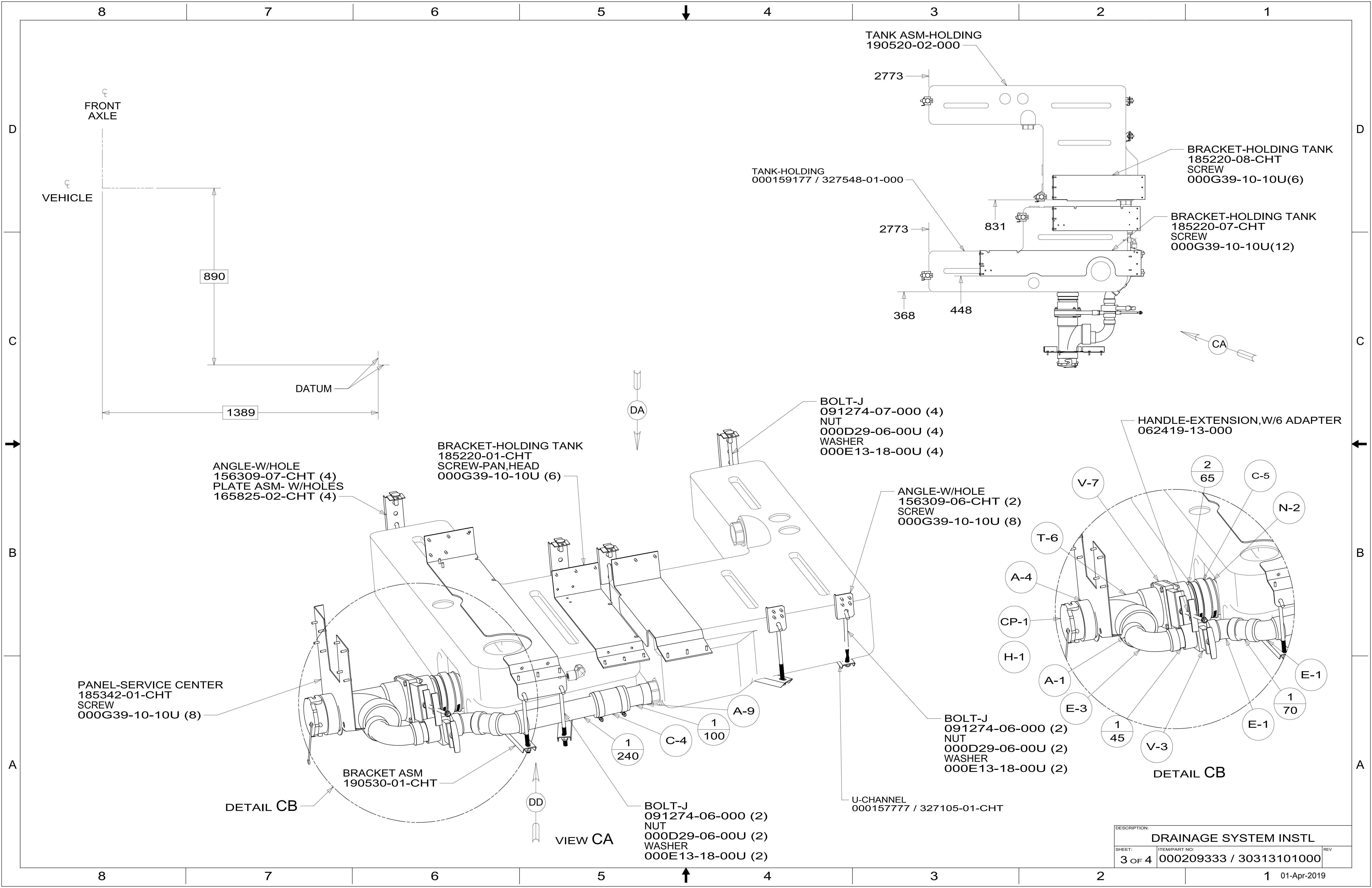
23T DRAINAGE SYSTEM-HEATED



DSNR:		ALL DIMENSIONS ARE IN MILLIMETERS		
DIFTR:		MATERIAL:		
UNSPECIFIED TOLERANCES:				
WHOLE DIM (X)	±	3		
ONE-PLACE (X.X)	±	1.5		
TWO-PLACE (X.XX)	±	0.50		
ANGLE	±	1°		
REFER TO ES0018 FOR FASTENER TIGHTENING GUIDELINES		WEIGHT: (LBS)	FIRST USED: (REF)	
			17 259K	
DRAINAGE SYSTEM INSTL				
SHEET:	ITEM/PART NO.:	REV:		
1 OF 4	000209333 / 30313101000			



DESCRIPTION:		
DRAINAGE SYSTEM INSTL		
SHEET:	ITEM/PART NO.:	REV
2 OF 4	000209333 / 30313101000	



FRONT AXLE

VEHICLE

890

1389

DATUM

DA

BRACKET-HOLDING TANK
185220-01-CHT
SCREW-PAN,HEAD
000G39-10-10U (6)

ANGLE-W/HOLE
156309-07-CHT (4)
PLATE ASM- W/HOLES
165825-02-CHT (4)

PANEL-SERVICE CENTER
185342-01-CHT
SCREW
000G39-10-10U (8)

BRACKET ASM
190530-01-CHT

DETAIL CB

VIEW CA

BOLT-J
091274-06-000 (2)
NUT
000D29-06-00U (2)
WASHER
000E13-18-00U (2)

BOLT-J
091274-07-000 (4)
NUT
000D29-06-00U (4)
WASHER
000E13-18-00U (4)

ANGLE-W/HOLE
156309-06-CHT (2)
SCREW
000G39-10-10U (8)

BOLT-J
091274-06-000 (2)
NUT
000D29-06-00U (2)
WASHER
000E13-18-00U (2)

U-CHANNEL
000157777 / 327105-01-CHT

TANK ASM-HOLDING
190520-02-000

TANK-HOLDING
000159177 / 327548-01-000

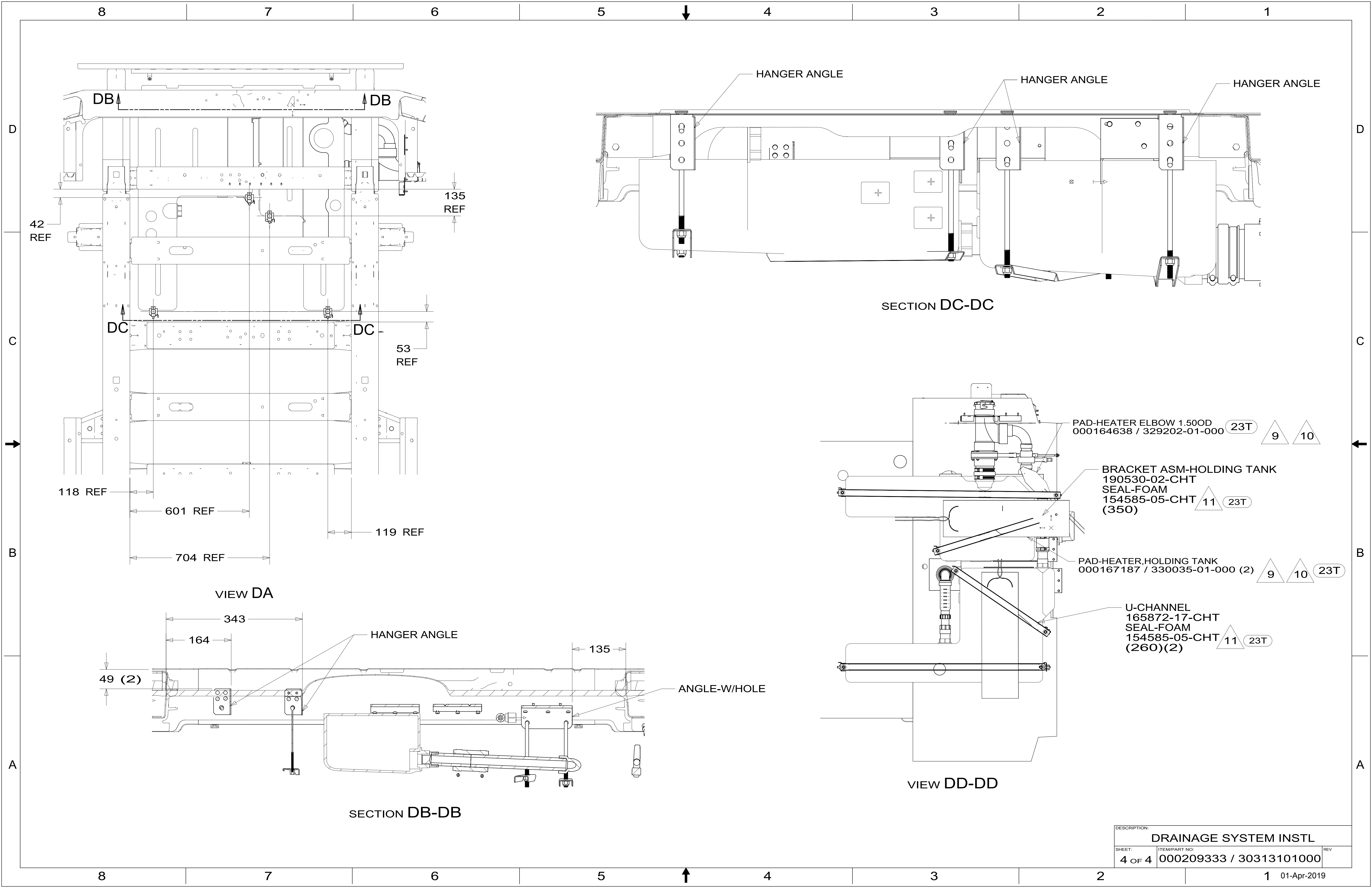
BRACKET-HOLDING TANK
185220-08-CHT
SCREW
000G39-10-10U(6)

BRACKET-HOLDING TANK
185220-07-CHT
SCREW
000G39-10-10U(12)

HANDLE-EXTENSION,W/6 ADAPTER
062419-13-000

DETAIL CB

DESCRIPTION:		
DRAINAGE SYSTEM INSTL		
SHEET:	ITEM/PART NO.:	REV
3 OF 4	000209333 / 30313101000	



DESCRIPTION:		
DRAINAGE SYSTEM INSTL		
SHEET:	ITEM/PART NO.:	REV
4 OF 4	000209333 / 30313101000	