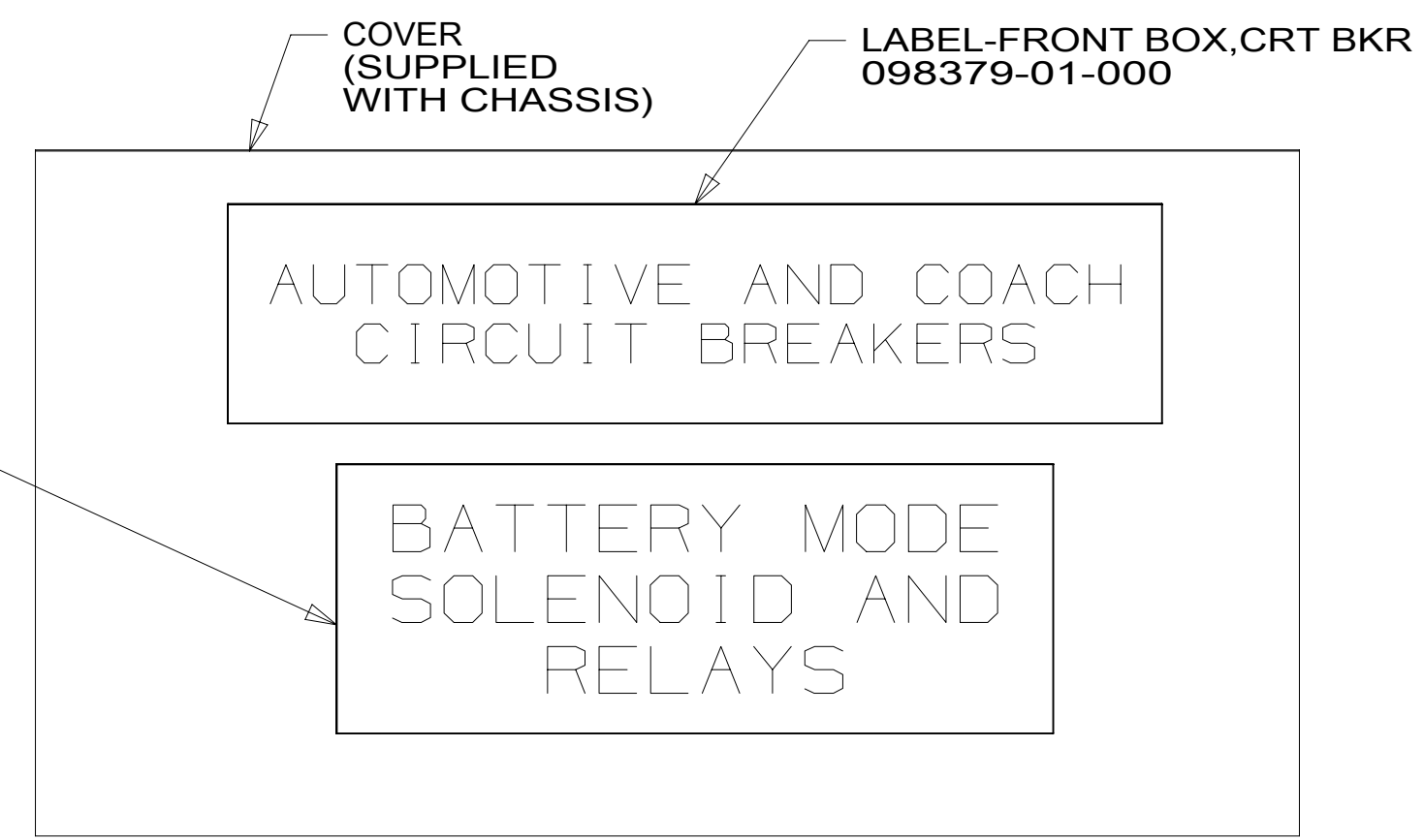
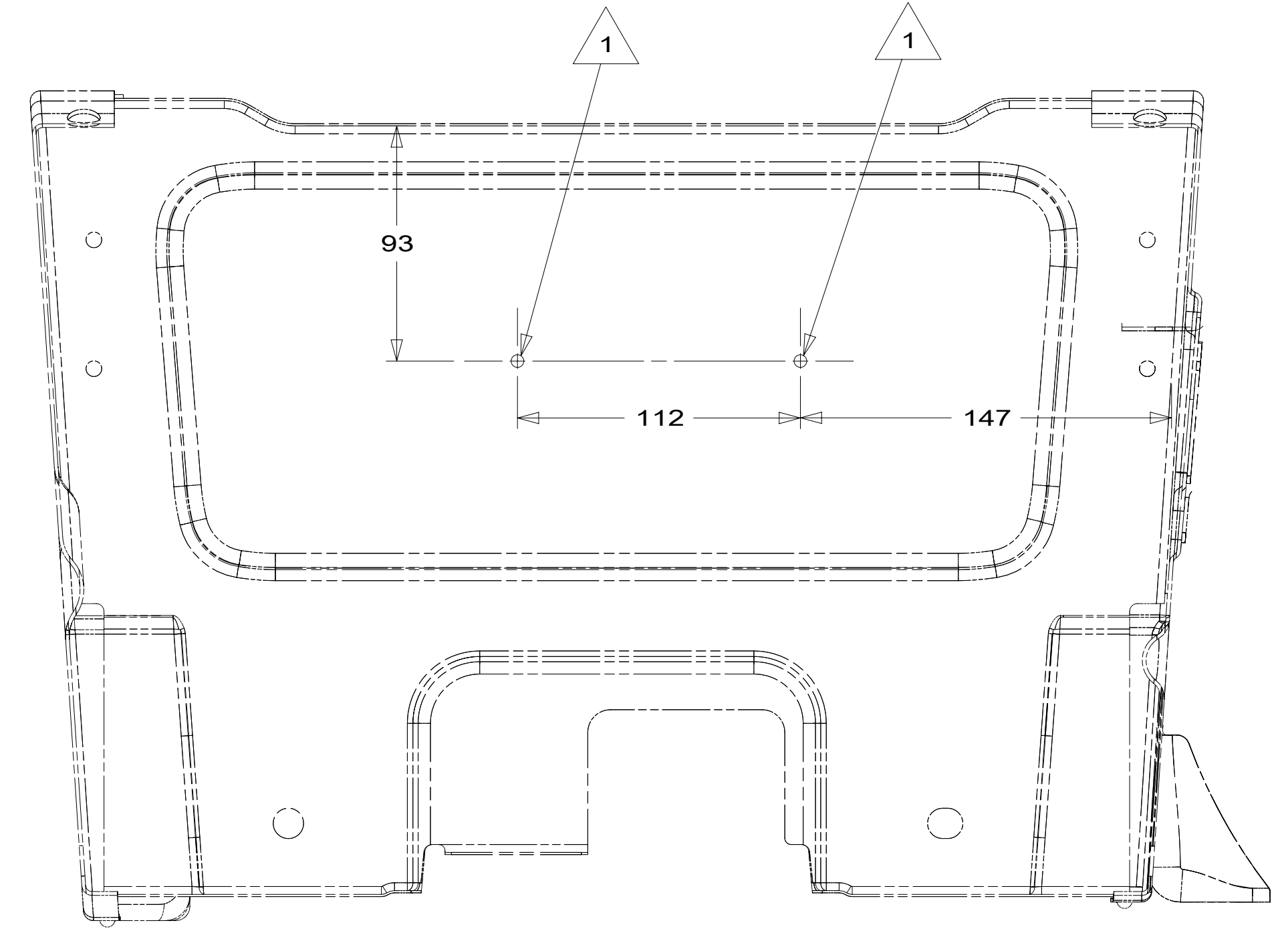


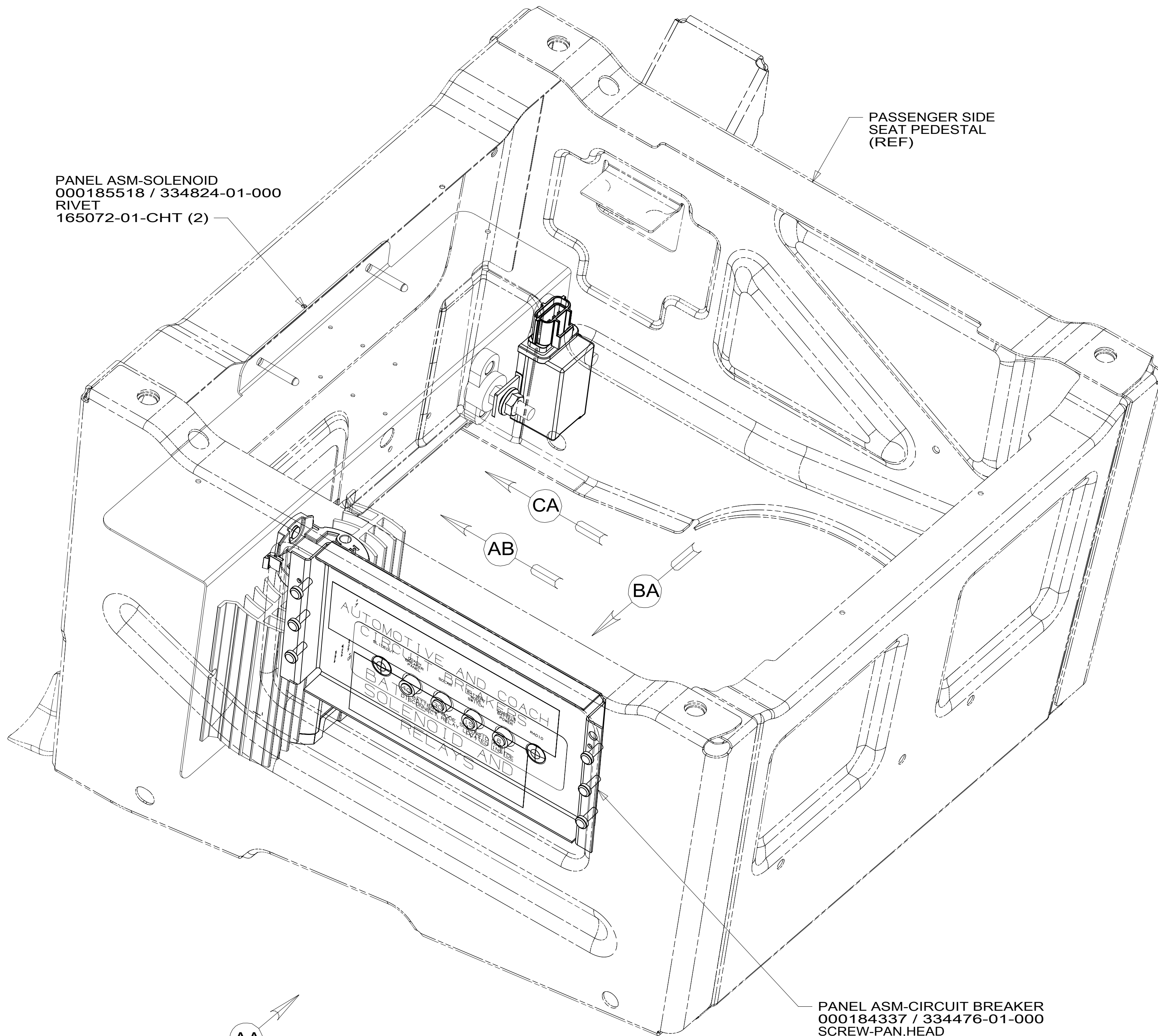
8 7 6 5 4 3 2 1



VIEW AA



VIEW AB



- 265 CODES/STANDARDS-CSA/CMVSS
- 1B1 CODES/STANDARDS USA
- 1B1 265



DSNR:	ALL DIMENSIONS ARE IN MILLIMETERS	
DIFTR:		
UNSPECIFIED TOLERANCES:	MATERIAL:	
WHOLE DIM (X) :	3	
ONE-PLACE (X.X) :	1.5	
TWO-PLACE (X.XX) :	0.50	
ANGLE :	1°	
REFER TO ES0018 FOR FASTENER TIGHTENING GUIDELINES	WEIGHT: (LBS)	FIRST USED:
		20 170A

DESCRIPTION:		
CHASSIS ELECTRICAL BOX ASM		
SHEET:	ITEM/PART NO.:	REV:
1 OF 3	000184128 / 33440901000	
REF:		

FOR ELECTRICAL TORQUE SPECIFICATIONS SEE DWG NO. 128783-01-000

FOR ELECTRICAL CALLOUTS SEE DWG NO. 121339-01-000

NOTES:

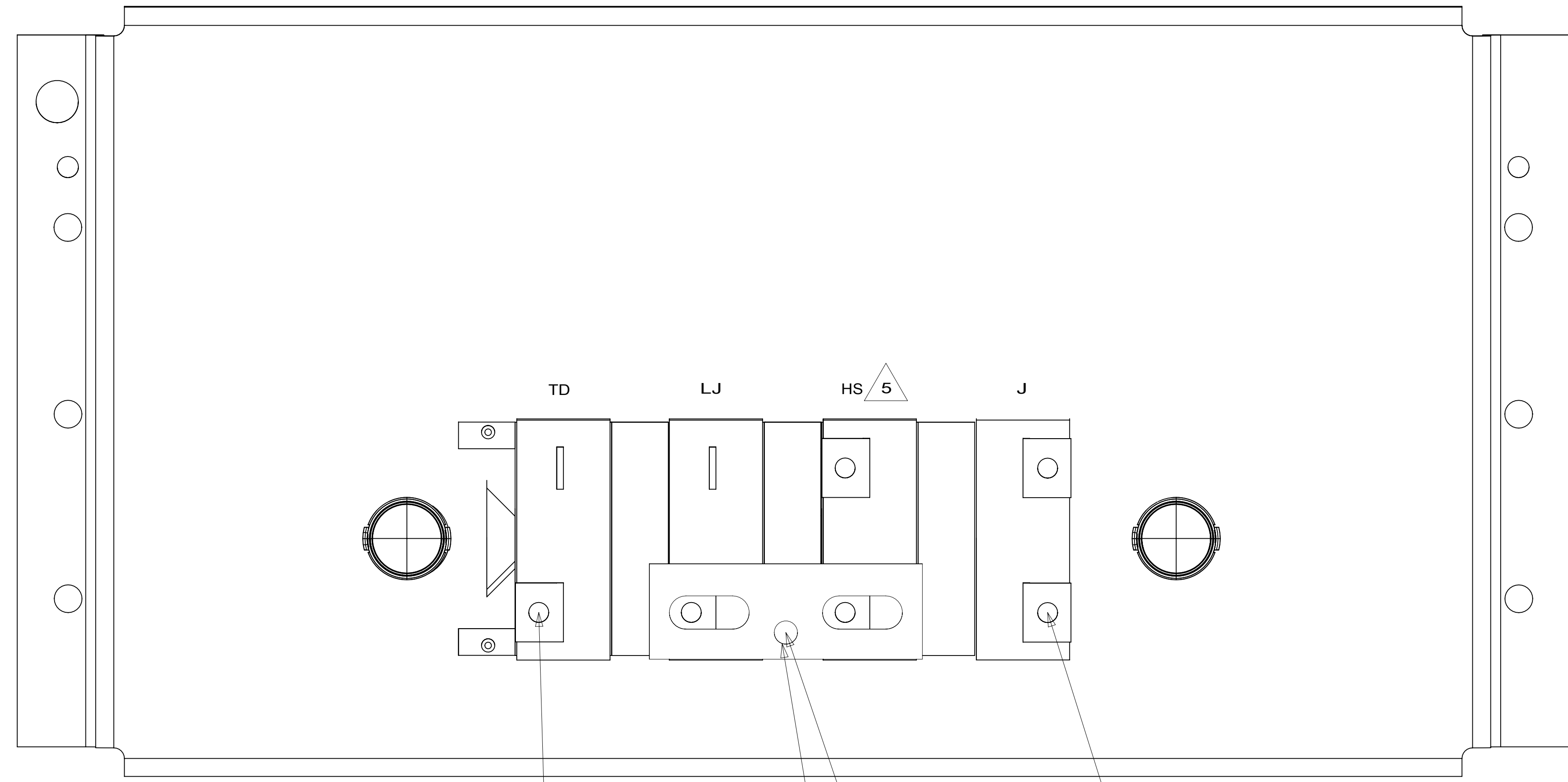
1 DRILL 5 MM HOLE AT LOCATION SHOWN.

8 7 6 5 4 3 2 1

8 7 6 5 4 3 2 1

D
C
B
A

D
C
B
A



VIEW BA

- 5 MARKED WITH WHITE TAPE.
- 4 MARKED WITH RED TAPE.
- 3 MARKED WITH PURPLE TAPE.
- 2 MARKED WITH YELLOW TAPE.

NOTES:
1. TAPE BACK UNUSED WIRES TO HARNESS.

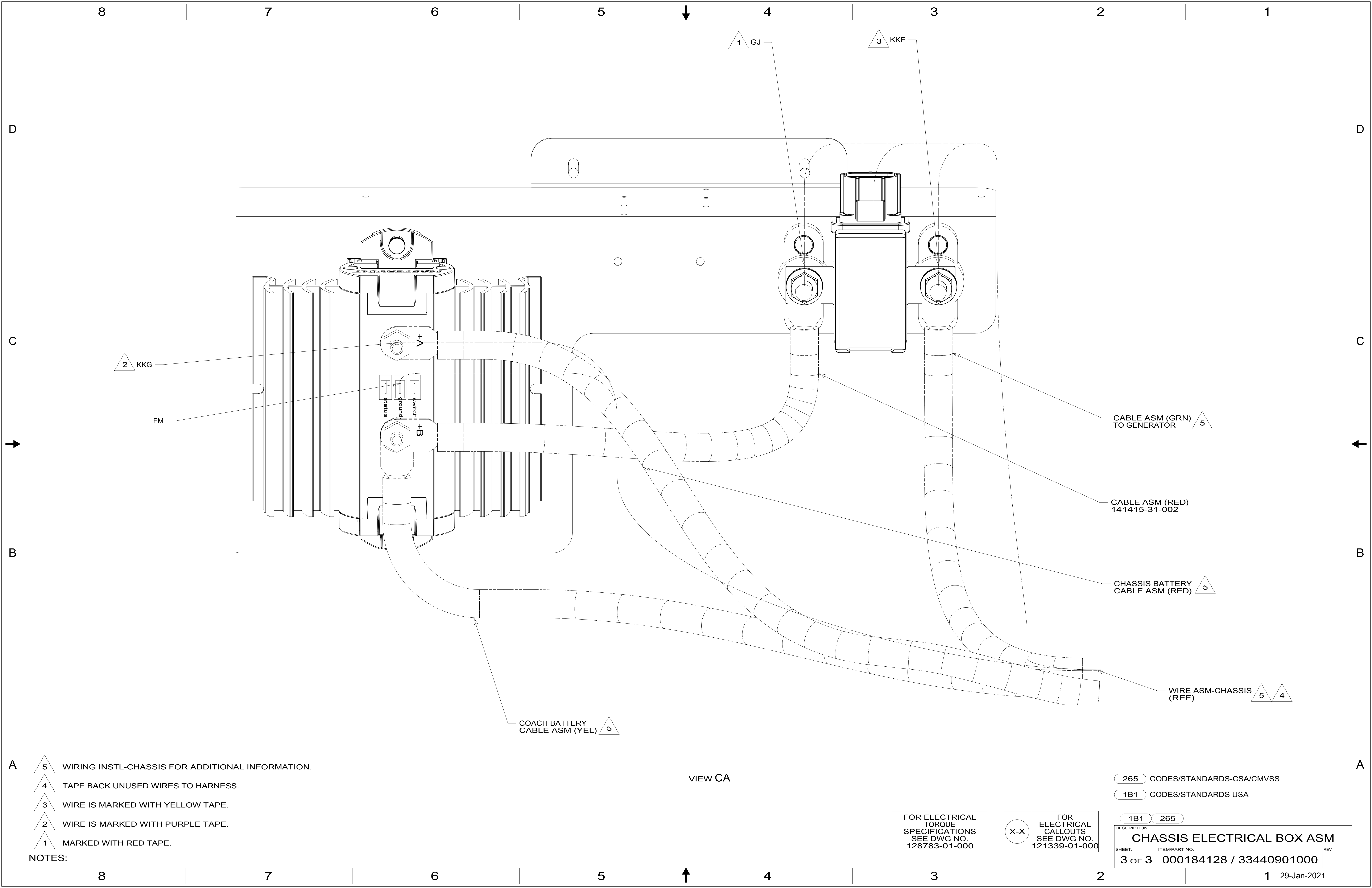
FOR ELECTRICAL TORQUE SPECIFICATIONS SEE DWG NO. 128783-01-000

FOR ELECTRICAL CALLOUTS SEE DWG NO. 121339-01-000

265 CODES/STANDARDS-CSA/CMVSS
1B1 CODES/STANDARDS USA

DESCRIPTION:	
1B1 265	
CHASSIS ELECTRICAL BOX ASM	
SHEET:	ITEM/PART NO. REV
2 OF 3	000184128 / 33440901000

8 7 6 5 4 3 2 1 29-Jan-2021



- NOTES:
- 5 WIRING INSTL-CHASSIS FOR ADDITIONAL INFORMATION.
 - 4 TAPE BACK UNUSED WIRES TO HARNESS.
 - 3 WIRE IS MARKED WITH YELLOW TAPE.
 - 2 WIRE IS MARKED WITH PURPLE TAPE.
 - 1 MARKED WITH RED TAPE.

VIEW CA

FOR ELECTRICAL TORQUE SPECIFICATIONS SEE DWG NO. 128783-01-000

FOR ELECTRICAL CALLOUTS SEE DWG NO. 121339-01-000

265 CODES/STANDARDS-CSA/CMVSS
 1B1 CODES/STANDARDS USA

DESCRIPTION:	
CHASSIS ELECTRICAL BOX ASM	
SHEET: 3 OF 3	ITEM/PART NO: 000184128 / 33440901000
REV	1 29-Jan-2021