

8

7

6

5



4

3

2

1

CABLE ASM-STARTER (RED)	141415-32-049
CABLE ASM-COACH BATTERY (YEL)	141415-52-016
CABLE ASM-COACH BATTERY GND (BLK)	133566-12-008
CABLE ASM-GENERATOR (GRN)	141415-42-052
CABLE ASM-GENERATOR GND (BLK)	133566-12-008
CABLE ASM-STARTER,EXT (RED 2)	141415-32-018
CABLE ASM-INVERTER FUSE (ORG)	141415-62-006
CABLE ASM-INVERTER (ORG)	141415-62-028
CABLE ASM-INVERTER GND (BLK)	133566-12-030
CABLE ASM-INVERTER CASE GND (GRN)	136145-05-025

265 CODES/STANDARDS-CSA/CMVSS

1B1 CODES/STANDARDS USA

1B1 265



COPYRIGHT 2024 WINNEBAGO INDUSTRIES, INC.

	INDICATES A CRITICAL CHARACTERISTIC. ENSURE PROPER PROCEDURES ARE FOLLOWED.
	INDICATES A SIGNIFICANT CHARACTERISTIC. ENSURE PROPER PROCEDURES ARE FOLLOWED.
	INDICATES A KEY CHARACTERISTIC. ENSURE PROPER PROCEDURES ARE FOLLOWED.

FOR ELECTRICAL TORQUE SPECIFICATIONS SEE DWG NO. 128783-01-000

FOR ELECTRICAL CALLOUTS SEE DWG 000228177 344479-01-000

DSNR:		ALL DIMENSIONS ARE IN MILLIMETERS		
DFFR:				
UNSPECIFIED TOLERANCES:		MATERIAL:		
WHOLE DIM (X)	: 3			
ONE-PLACE (X.X)	: 1.5			
TWO-PLACE (X.XX)	: 0.50			
ANGLE	: 1°			
REFER TO ES0018 FOR FASTENER TIGHTENING GUIDELINES	WEIGHT: (LBS)	FIRST USED: 20 325B		
DESCRIPTION: BATTERY INSTL				
SHEET: 1 OF 3	ITEM/PART NO: 000176457 / 33269001000	REV:		

REF: 1 21-Mar-2024

8

7

6

5



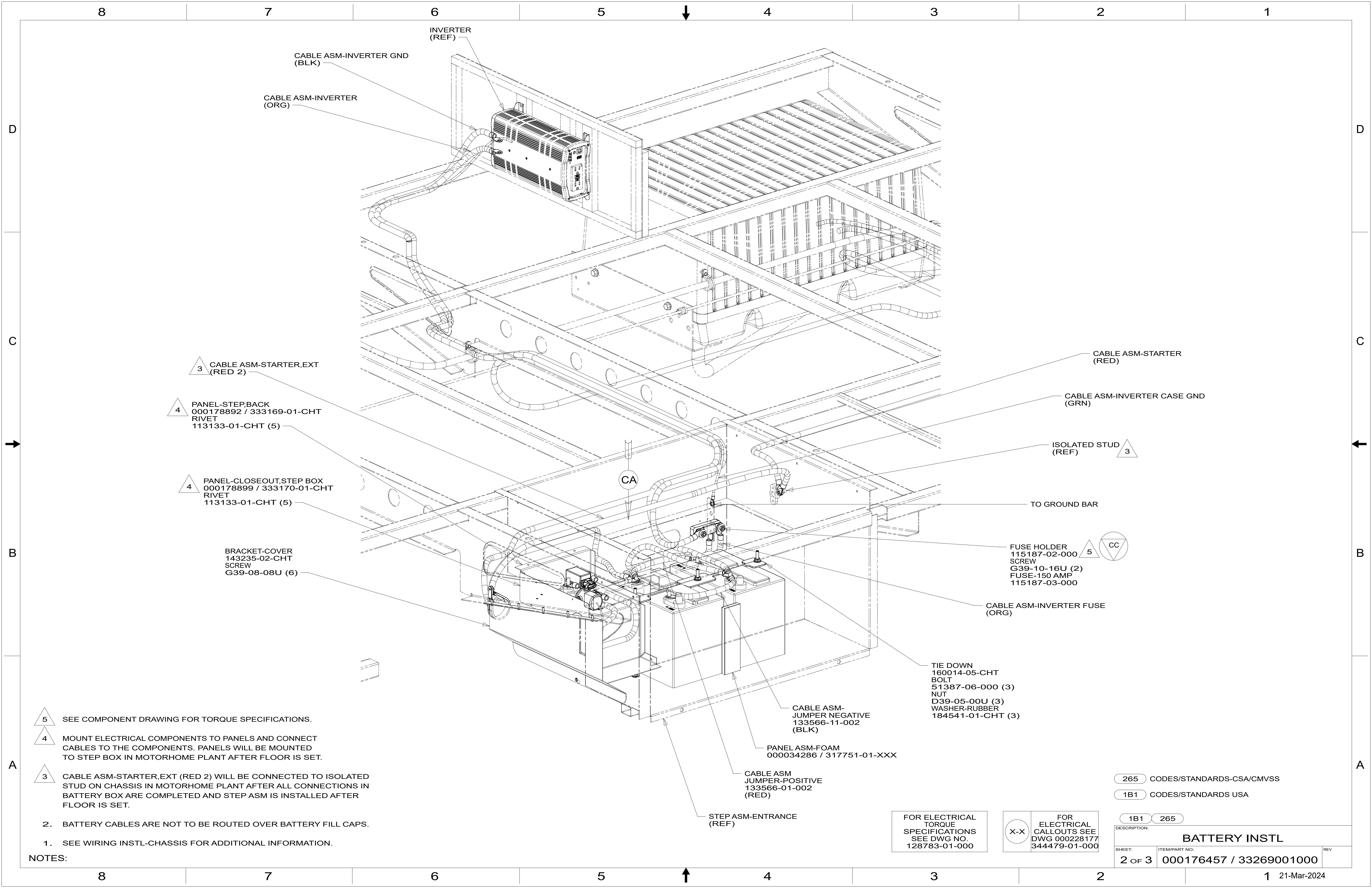
4

3

2

1

1 21-Mar-2024



- 5 SEE COMPONENT DRAWING FOR TORQUE SPECIFICATIONS.
- 4 MOUNT ELECTRICAL COMPONENTS TO PANELS AND CONNECT CABLES TO THE COMPONENTS. PANELS WILL BE MOUNTED TO STEP BOX IN MOTORHOME PLANT AFTER FLOOR IS SET.
- 3 CABLE ASM-STARTER,EXT (RED 2) WILL BE CONNECTED TO ISOLATED STUD ON CHASSIS IN MOTORHOME PLANT AFTER ALL CONNECTIONS IN BATTERY BOX ARE COMPLETED AND STEP ASM IS INSTALLED AFTER FLOOR IS SET.

- 2. BATTERY CABLES ARE NOT TO BE ROUTED OVER BATTERY FILL CAPS.
- 1. SEE WIRING INSTL-CHASSIS FOR ADDITIONAL INFORMATION.

NOTES:

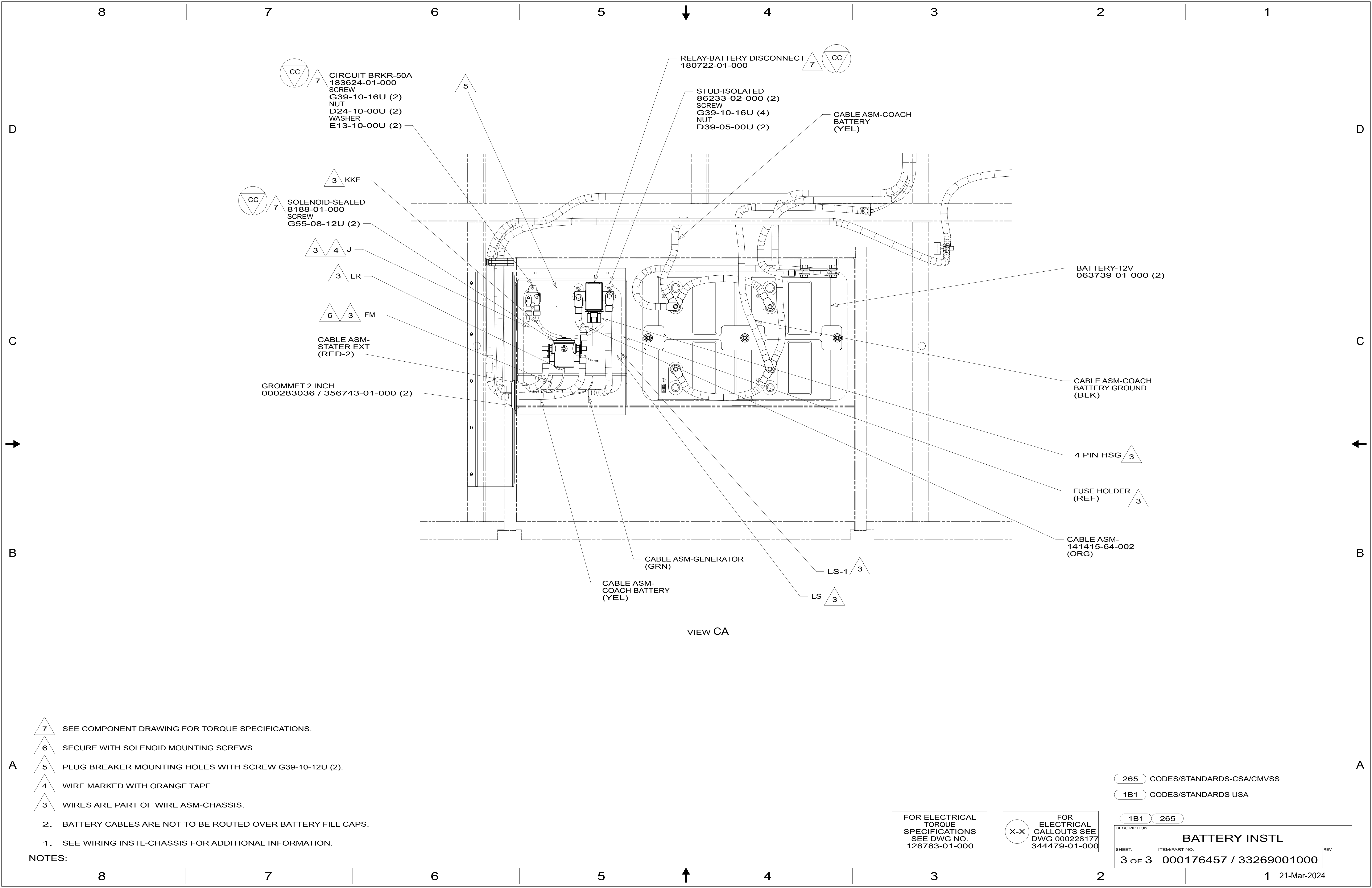
FOR ELECTRICAL TORQUE SPECIFICATIONS SEE DWG NO. 128783-01-000

FOR ELECTRICAL CALLOUTS SEE DWG 000228177 344479-01-000

265 CODES/STANDARDS-CSA/CMVSS  
1B1 CODES/STANDARDS USA

1B1 265

DESCRIPTION: <b>BATTERY INSTL</b>		
SHEET: 2 OF 3	ITEM/PART NO: 000176457 / 33269001000	REV



VIEW CA

- 7 SEE COMPONENT DRAWING FOR TORQUE SPECIFICATIONS.
- 6 SECURE WITH SOLENOID MOUNTING SCREWS.
- 5 PLUG BREAKER MOUNTING HOLES WITH SCREW G39-10-12U (2).
- 4 WIRE MARKED WITH ORANGE TAPE.
- 3 WIRES ARE PART OF WIRE ASM-CHASSIS.

- 2. BATTERY CABLES ARE NOT TO BE ROUTED OVER BATTERY FILL CAPS.
- 1. SEE WIRING INSTL-CHASSIS FOR ADDITIONAL INFORMATION.

NOTES:

265 CODES/STANDARDS-CSA/CMVSS  
 1B1 CODES/STANDARDS USA

FOR ELECTRICAL TORQUE SPECIFICATIONS SEE DWG NO. 128783-01-000

FOR ELECTRICAL CALLOUTS SEE DWG 000228177 344479-01-000

DESCRIPTION:		1B1 265
<b>BATTERY INSTL</b>		
SHEET:	ITEM/PART NO.:	REV
3 OF 3	000176457 / 33269001000	