

LOAD CENTER ASM  
000174150 / 332248-01-000  
SCREW  
159755-04-09U (8)

RCP-E (BLU)  
EXTERIOR

292 MODULE-POWER  
SHARE SWITCH  
(REF)

GROUND MAIN

1 SP-04 RCP-2 (BLU)  
GALLEY SDWL

5 RCP-3 (YEL-2)  
REFRIGERATOR

RCP-B (YEL-2)  
REFRIG CABT

RCP-1 (YEL-2)  
EXT TV

RCP-2 (BLU)  
EXT FRIDGE

RCP-B  
UNDER GALLEY  
(BLU)

FROM RCP-  
EXTERIOR

TO RCP-  
EXT FRIDGE

TO RCP-  
GALLEY SDWL

DETAIL CA

- 6 SEE LOAD CENTER ASM FOR ADDITIONAL INFORMATION.
- 5 ROUTE POWER CORD FOR REFRIGERATOR UNDER DUCTING AND AWAY FROM THE TOP OF THE FURNACE.
4. AT MINIMUM ALL WIRES TO BE SUPPORTED AND SECURED PER CODE REQUIREMENTS. USE CLAMP 10495 OR 10497 OR 083610 OR WIRE TIE 8343 OR 108046 AND SCREW G67-XX-XXX OR G56-XX-XXX AS APPROPRIATE FOR INSTALLATION.
- 3 WIRE ROUTED IN ROOF.
- 2 WIRE ROUTED THRU FLOOR IN THIS AREA.
- 1 WIRE ROUTED IN SIDEWALL.

NOTES:

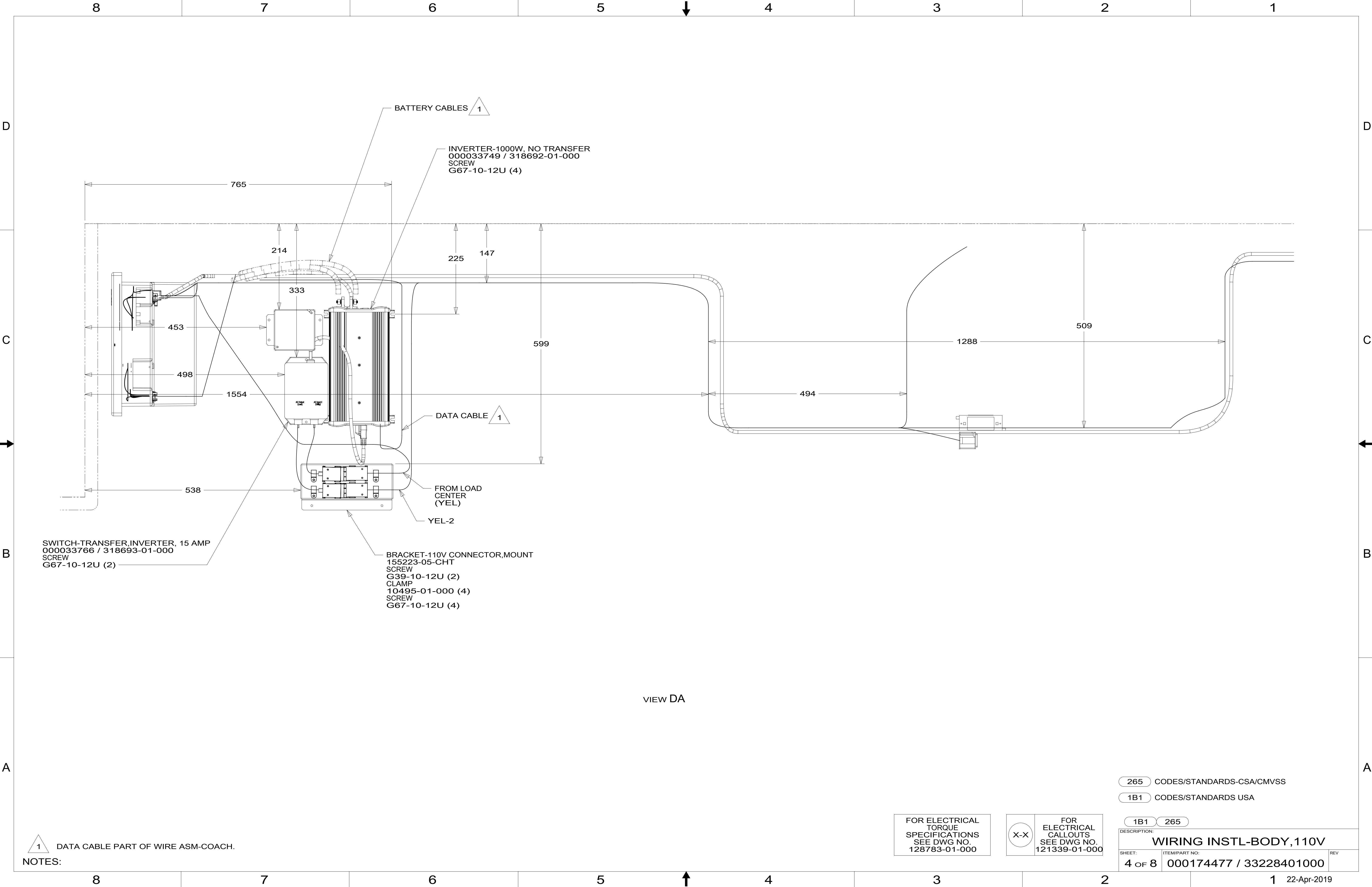
FOR ELECTRICAL  
TORQUE  
SPECIFICATIONS  
SEE DWG NO.  
128783-01-000

FOR  
ELECTRICAL  
CALLOUTS  
SEE DWG NO.  
121339-01-000

- 292 A/C-HIGH EFFICIENCY (2)
- 265 CODES/STANDARDS-CSA/CMVSS
- 1B1 CODES/STANDARDS USA

DESCRIPTION:		
1B1	265	
WIRING INSTL-BODY,110V		
SHEET:	ITEM/PART NO:	REV
3 OF 8	000174477 / 33228401000	

1 22-Apr-2019



NOTES:

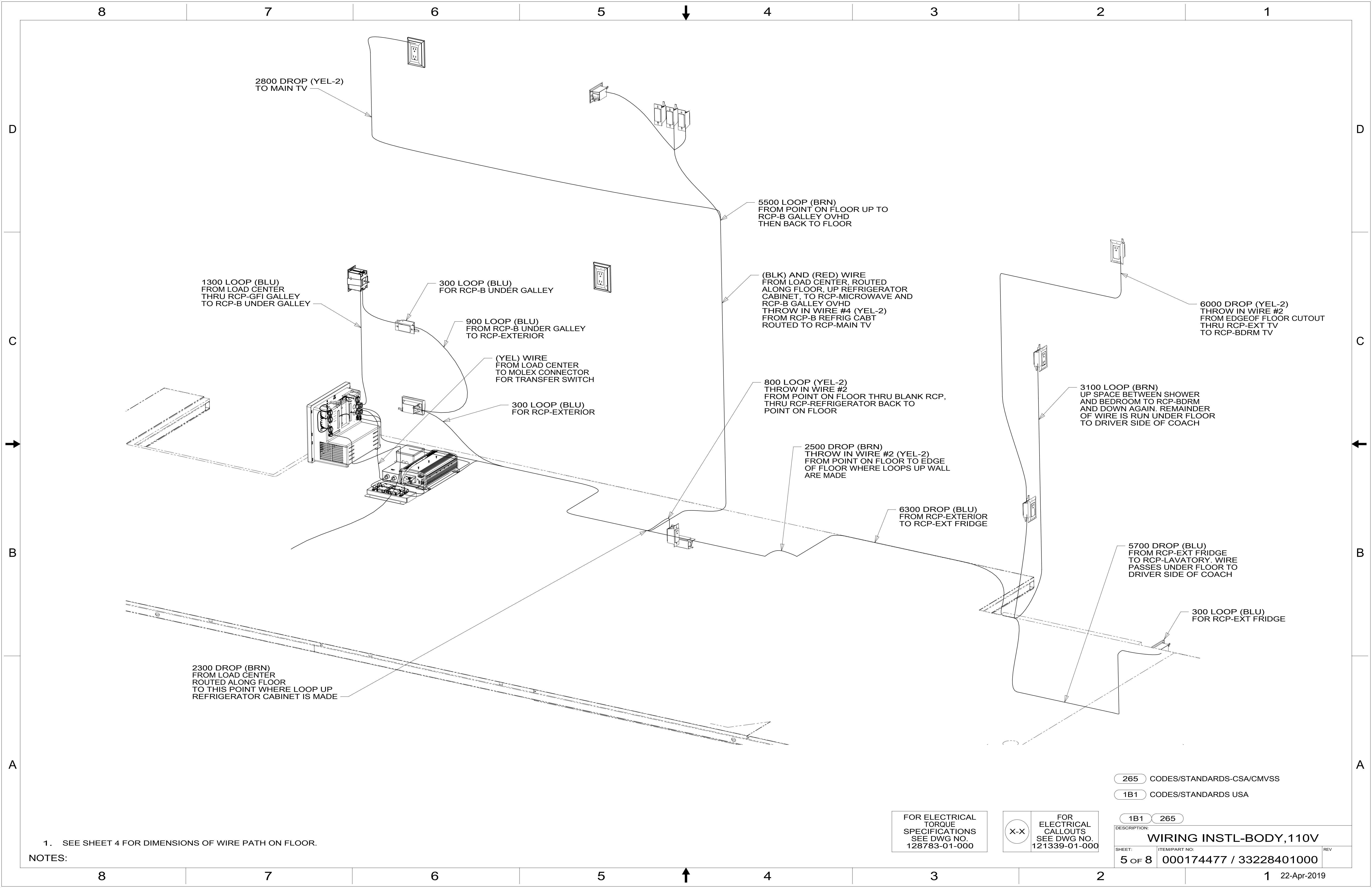
1 DATA CABLE PART OF WIRE ASM-COACH.

FOR ELECTRICAL  
TORQUE  
SPECIFICATIONS  
SEE DWG NO.  
128783-01-000

FOR  
ELECTRICAL  
CALLOUTS  
SEE DWG NO.  
121339-01-000

265 CODES/STANDARDS-CSA/CMVSS  
1B1 CODES/STANDARDS USA

DESCRIPTION:		
1B1 265 WIRING INSTL-BODY, 110V		
SHEET:	ITEM/PART NO:	REV
4 OF 8	000174477 / 33228401000	



NOTES:  
1. SEE SHEET 4 FOR DIMENSIONS OF WIRE PATH ON FLOOR.

FOR ELECTRICAL  
TORQUE  
SPECIFICATIONS  
SEE DWG NO.  
128783-01-000

FOR  
ELECTRICAL  
CALLOUTS  
SEE DWG NO.  
121339-01-000

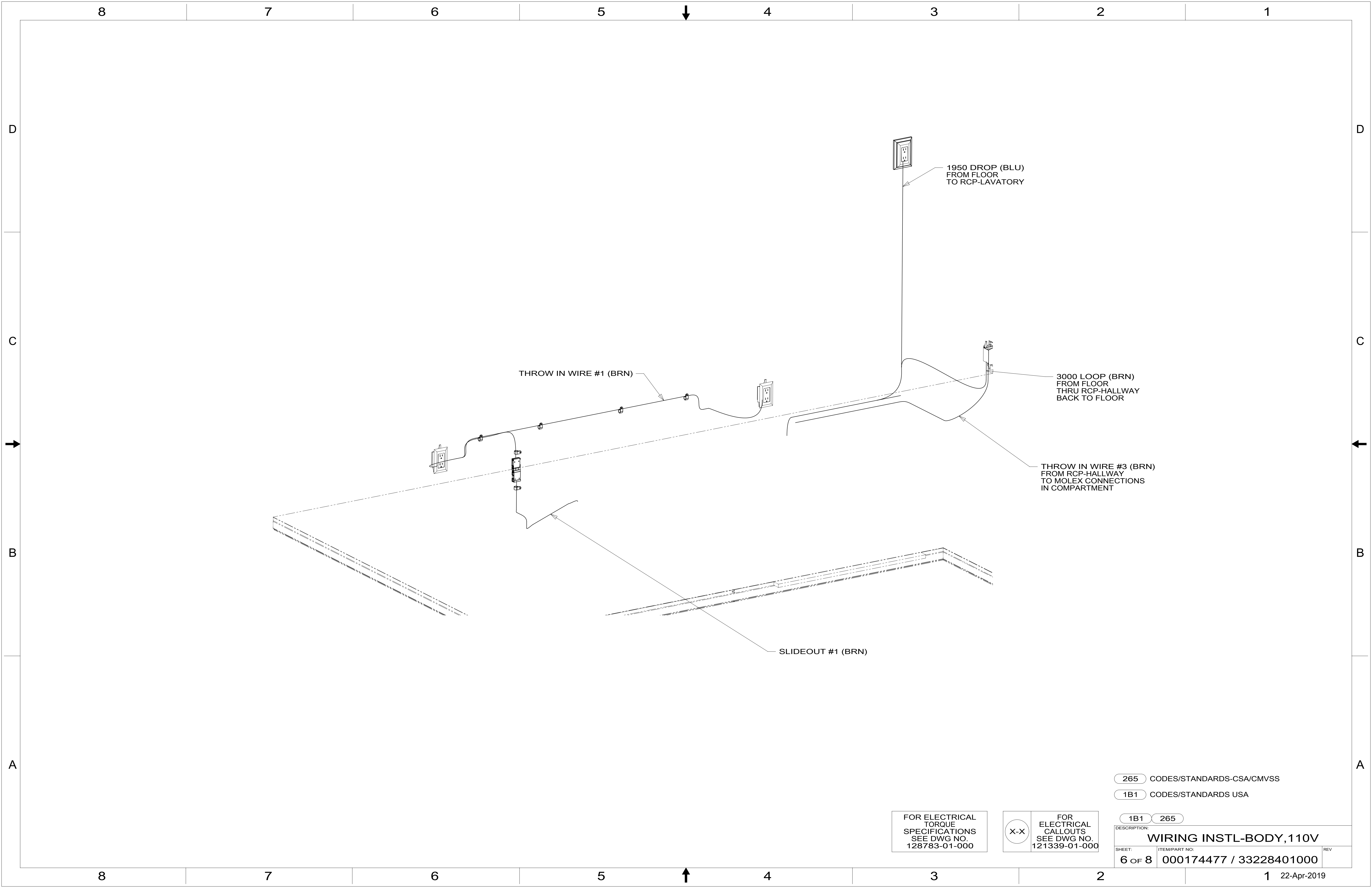
265 CODES/STANDARDS-CSA/CMVSS

1B1 CODES/STANDARDS USA

1B1 265

DESCRIPTION:  
**WIRING INSTL-BODY, 110V**

SHEET: 5 OF 8	ITEM/PART NO: 000174477 / 33228401000	REV
------------------	------------------------------------------	-----



FOR ELECTRICAL  
TORQUE  
SPECIFICATIONS  
SEE DWG NO.  
128783-01-000

FOR  
ELECTRICAL  
CALLOUTS  
SEE DWG NO.  
121339-01-000

265 CODES/STANDARDS-CSA/CMVSS

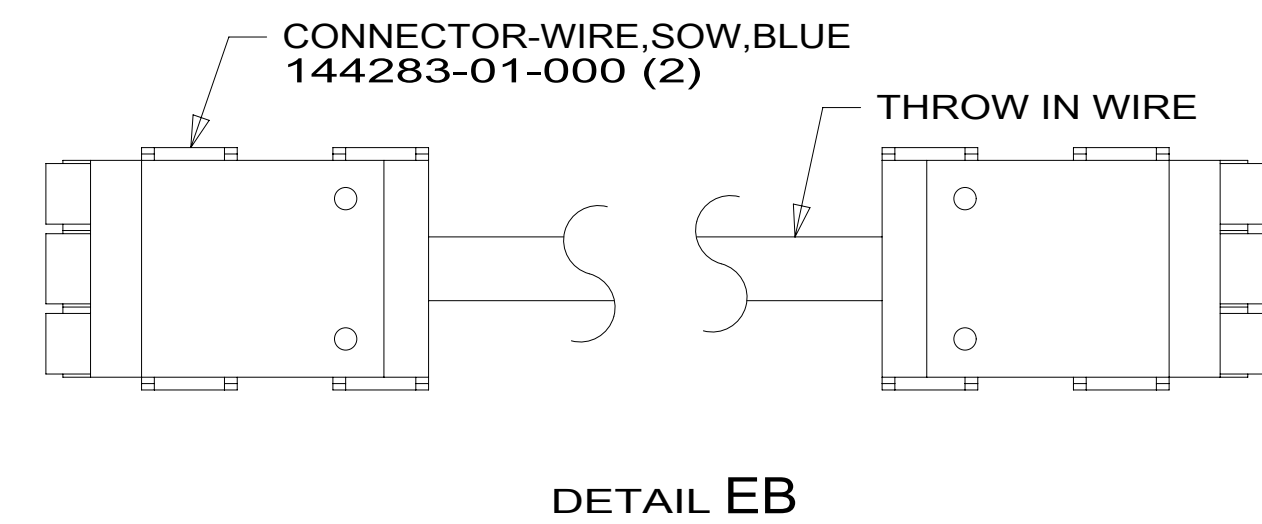
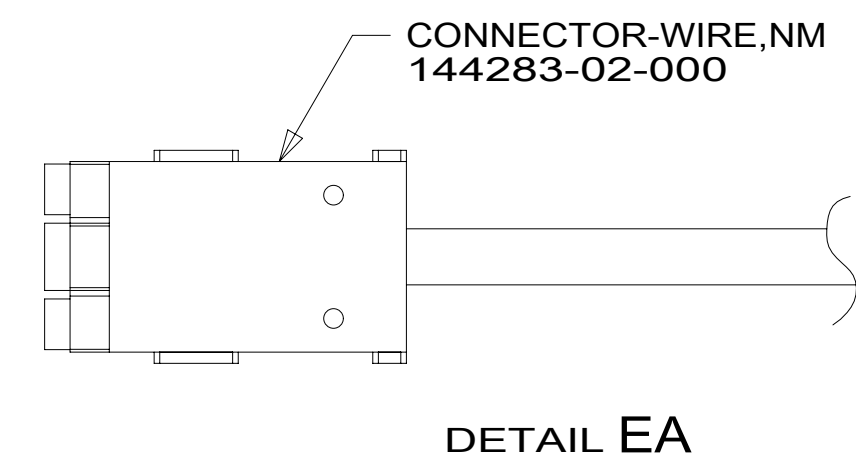
1B1 CODES/STANDARDS USA


1B1 265


DESCRIPTION:		
WIRING INSTL-BODY, 110V		
SHEET:	ITEM/PART NO:	REV
6 OF 8	000174477 / 33228401000	




RED	1B1	136135-07-056	
	265	136136-07-056	
YEL	1B1	136131-05-011	3
	265	136134-05-011	3
BRN	1B1	136131-03-201	3
	265	136134-03-201	3
BLU	1B1	136131-02-152	
	265	136134-02-152	
MAIN	1B1	136137-01-088	5
	265	136138-01-088	5
BLK	1B1	136135-06-062	
	265	136136-06-062	
GRN	1B1	136135-08-056	292
	265	136136-08-056	292
THROW IN WIRE #1	1B1	136131-03-035	3
	265	136134-03-035	3
THROW IN WIRE #2	1B1	136131-13-155	3
	265	136134-13-155	3
THROW IN WIRE #3	1B1	136131-03-029	3
	265	136134-03-029	3
THROW IN WIRE #4	1B1	136131-13-050	
	265	136134-13-050	
SLIDEOUT #1		136151-03-018	4
GROUND MAIN		178545-01-016	



-  5 ATTACH ONE END OF MAIN TO LOAD CENTER.  
COVER OTHER END OF MAIN CABLE ASM  
WITH 950 MM OF CONDUIT 091234-02-000.  
SECURE WITH TAPE 8363-01-000.

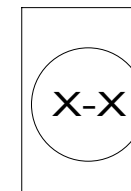
 4 SEE DETAIL **EB** FOR CONNECTOR INSTALLATION.

 3 SEE DETAIL **EA** FOR CONNECTOR INSTALLATION.

2. SECURE WIRES TO BACKSIDE OF LOAD CENTER WITH WIRE TIE 116673-01-000.

1. ALL GROUNDS WIRES TO BE COVERED WITH TUBING  
8041-02-000.

FOR ELECTRICAL  
TORQUE  
SPECIFICATIONS  
SEE DWG NO.  
128783-01-000



FOR  
ELECTRICAL  
CALLOUTS  
SEE DWG NO.  
121339-01-000

292 A/C-HIGH EFFICIENCY (2)

265 CODES/STANDARDS-CSA/CMVSS

1B1 CODES/STANDARDS USA

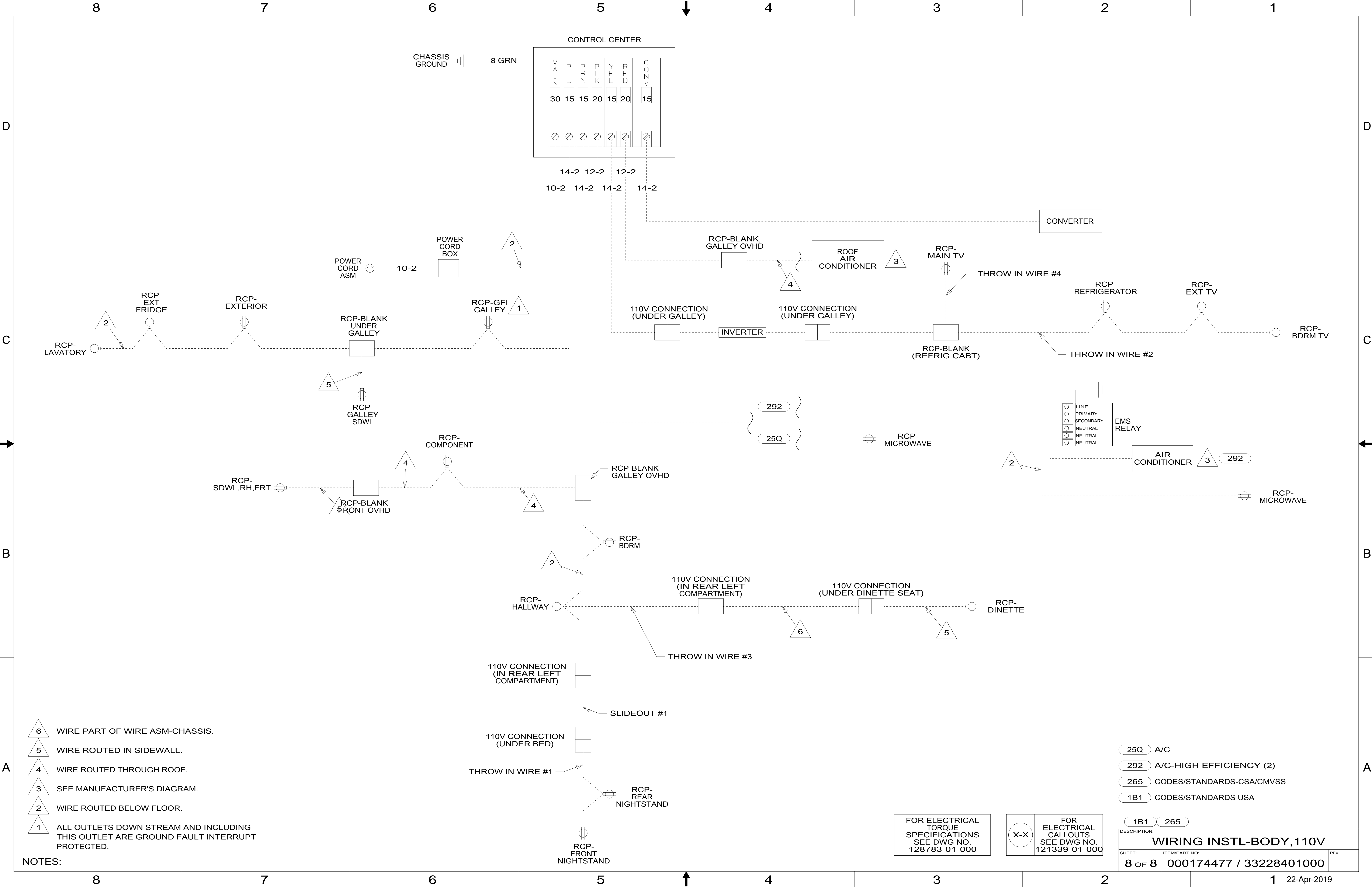
1B1 265

DESCRIPTION:

WIRING INSTL-BODY,110V

SHEET:	ITEM/PART NO:
7 OF 8	000174477 / 33228401000

22-Apr-2019



- NOTES:
- 6 WIRE PART OF WIRE ASM-CHASSIS.
  - 5 WIRE ROUTED IN SIDEWALL.
  - 4 WIRE ROUTED THROUGH ROOF.
  - 3 SEE MANUFACTURER'S DIAGRAM.
  - 2 WIRE ROUTED BELOW FLOOR.
  - 1 ALL OUTLETS DOWN STREAM AND INCLUDING THIS OUTLET ARE GROUND FAULT INTERRUPT PROTECTED.

FOR ELECTRICAL TORQUE SPECIFICATIONS SEE DWG NO. 128783-01-000

FOR ELECTRICAL CALLOUTS SEE DWG NO. 121339-01-000

- 25Q A/C
- 292 A/C-HIGH EFFICIENCY (2)
- 265 CODES/STANDARDS-CSA/CMVSS
- 1B1 CODES/STANDARDS USA

DESCRIPTION:		
WIRING INSTL-BODY, 110V		
SHEET:	ITEM/PART NO:	REV
8 OF 8	000174477 / 33228401000	