

WASHER-REDUCING
109917-05-000 (2)

CONNECTOR MAIN 1
008353-01-000

CONNECTOR
8356-02-000 (2)

CONVERTER FEED

ALL GROUND WIRES

GROUND WIRE
(PART OF MAIN
GROUND WIRE ASM)

CONNECTOR
8356-01-000

ALL WHITE
NEUTRAL WIRES

CIRCUIT BREAKER-
30/15A, 120V
187505-06-000

CIRCUIT BREAKER-
15/20A, 120V
187505-05-000

CIRCUIT BREAKER-
15/20A, 120V
187505-05-000

CIRCUIT BREAKER-
15A, 120V
187505-01-000

GROUND WIRE
(PART OF MAIN
GROUND WIRE ASM)

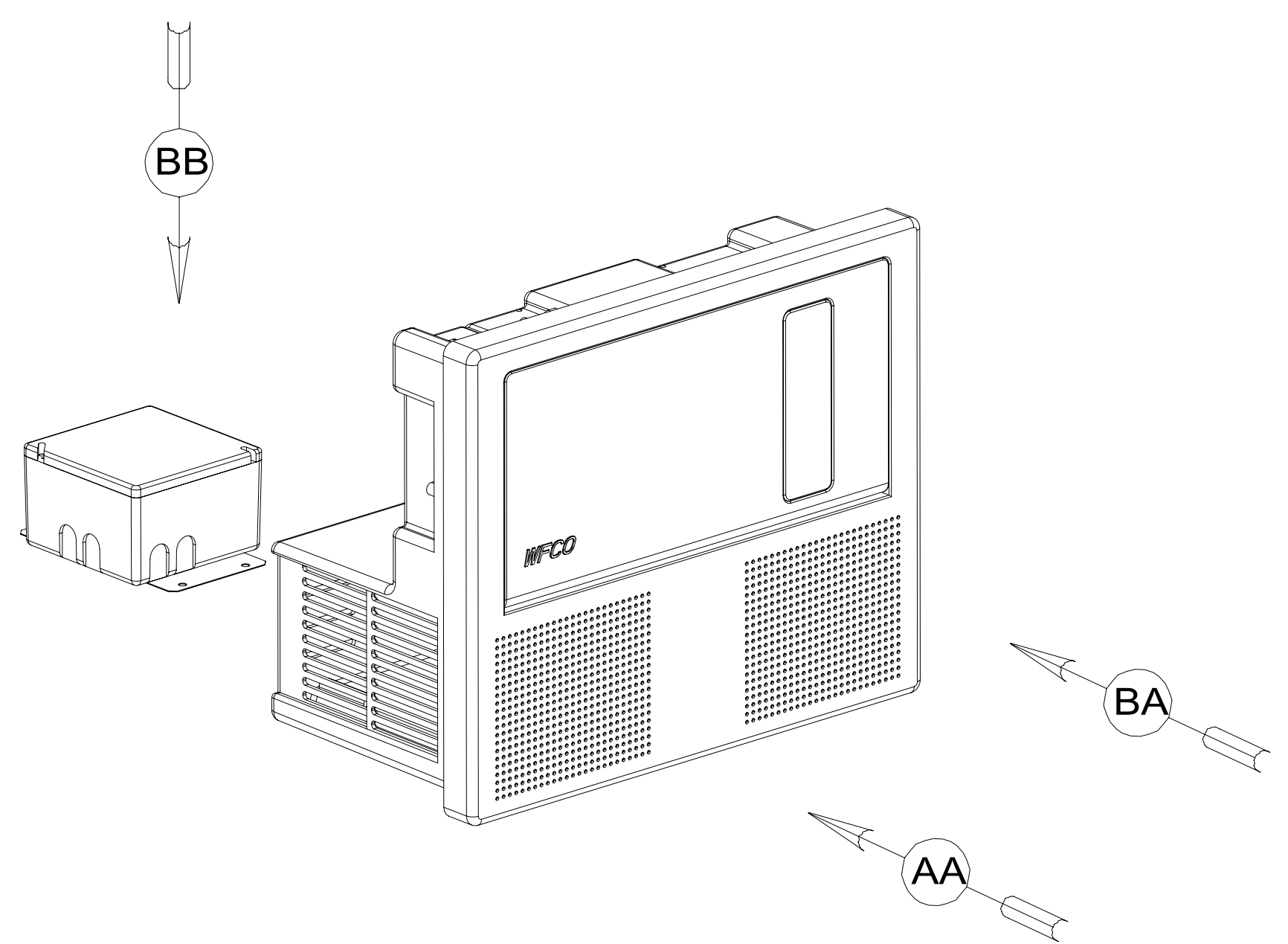
CONNECTOR
8353-01-000 (3)

FUSE PANEL DETAIL
SEE WIRING INSTL-12V,BODY

GROMMET
8385-01-000
WIRE TIE
116673-01-000

CONTROL CENTER-
55A, 120V/12V
183617-01-CHT

VIEW AA
(COVER REMOVED)



- NOTES:
- 4 ATTACH MAIN DURING ASSEMBLY OF LOAD CENTER.
 - 3 SEE WIRING INSTL-BODY, 110V FOR ADDITIONAL INFORMATION.
 - 2 CONNECT ONE BRANCH OF CONVERTER POWER CIRCUIT INTO BREAKER. COVER OTHER BRANCH OF CONVERTER POWER CIRCUIT WITH SUPPLIED WIRE NUT.
 - 1 INSERT GROMMET FROM THE INSIDE OF CONTROL CENTER. SECURE 110V WIRES TO BACKSIDE OF CONTROL CENTER WITH WIRE TIE.

FOR ELECTRICAL
TORQUE
SPECIFICATIONS
SEE DWG NO.
128783-01-000

FOR ELECTRICAL
CALLOUTS
SEE DWG NO.
121339-01-000

265 CODES/STANDARDS-CSA/CMVSS
1B1 CODES/STANDARDS USA

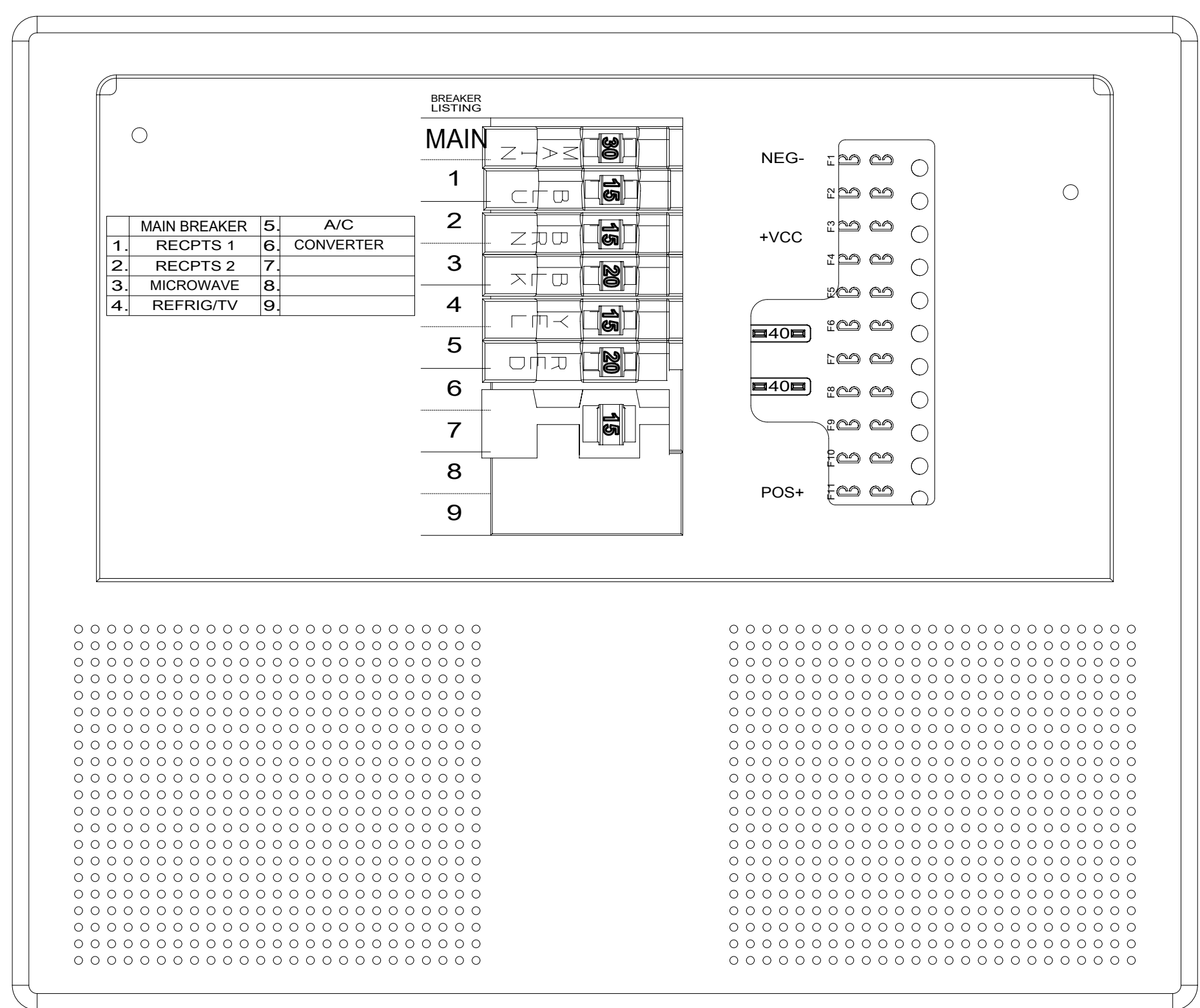
1B1 265



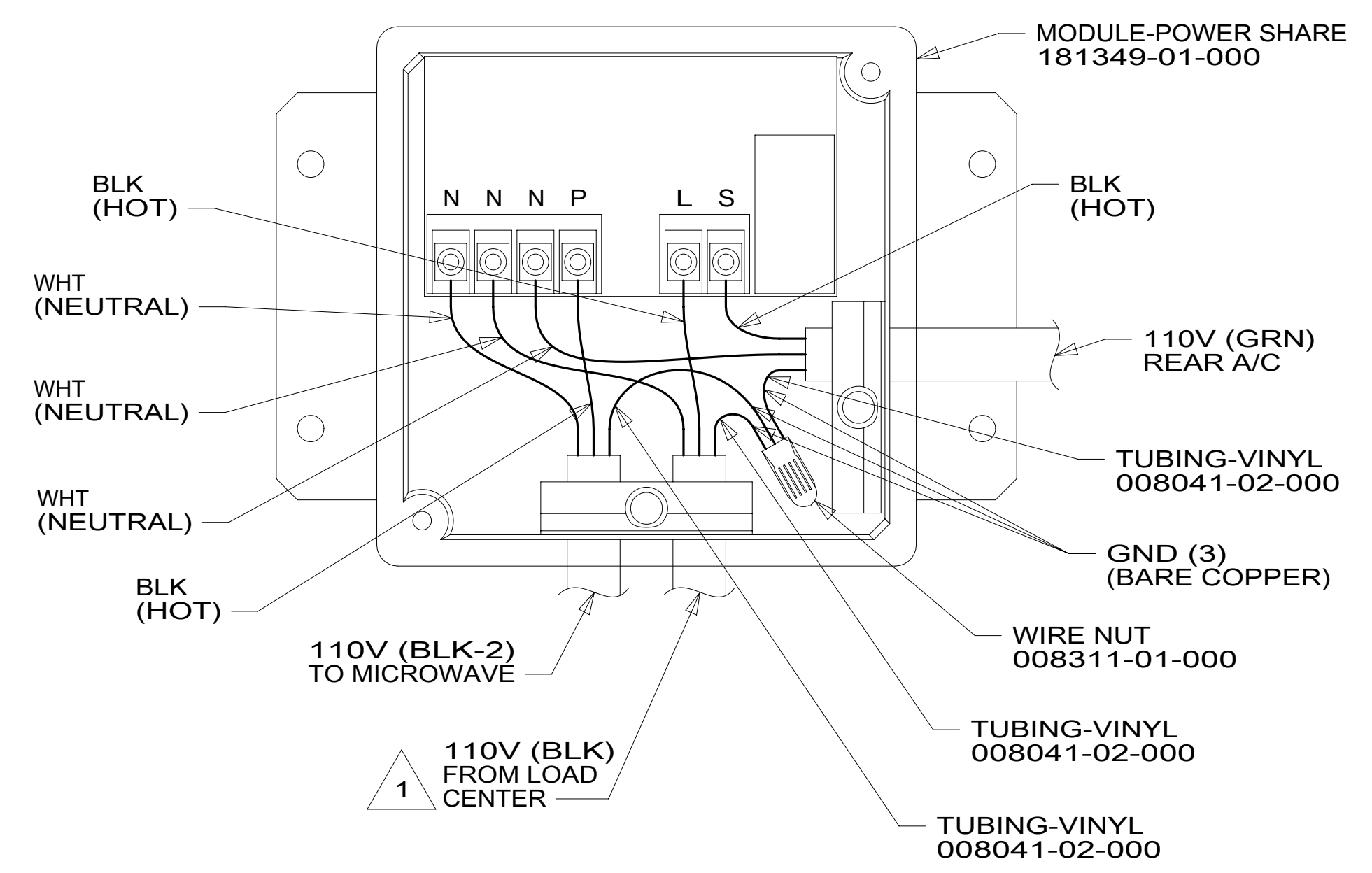
| | | | |
|--|-------------------------|-----------------------------------|-------------|
| DSNR: | | ALL DIMENSIONS ARE IN MILLIMETERS | |
| DFFR: | | MATERIAL: | |
| UNSPECIFIED TOLERANCES: | | | |
| WHOLE DIM (X) | : 3 | | |
| ONE-PLACE (X.X) | : 1.5 | | |
| TWO-PLACE (X.XX) | : 0.50 | | |
| ANGLE | : 1° | | |
| REFER TO ES0018 FOR FASTENER TIGHTENING GUIDELINES | | WEIGHT: (LBS) | FIRST USED: |
| | | | 20 V28Y |
| DESCRIPTION: LOAD CENTER ASM | | | |
| SHEET: | ITEM/PART NO.: | REV: | |
| 1 OF 2 | 000174150 / 33224801000 | | |
| REF: | | 1 14-Jan-2020 | |

8 7 6 5 4 3 2 1

D
C
B
A



VIEW BA
(DOOR REMOVED)



DETAIL BB 292

1 MEASURE 900 MM FROM THE BACK OF THE LOAD CENTER, LOOP THE BLACK WIRE AND CONNECT AS SHOWN.

NOTES:

- 292 A/C-HIGH EFFICIENCY (2)
- 265 CODES/STANDARDS-CSA/CMVSS
- 1B1 CODES/STANDARDS USA

FOR ELECTRICAL TORQUE SPECIFICATIONS SEE DWG NO. 128783-01-000

FOR ELECTRICAL CALLOUTS SEE DWG NO. 121339-01-000

| | | | |
|--------------|-------------------------|-----------------|--|
| DESCRIPTION: | | LOAD CENTER ASM | |
| SHEET: | ITEM/PART NO.: | REV | |
| 2 OF 2 | 000174150 / 33224801000 | | |

8 7 6 5 4 3 2 1 14-Jan-2020