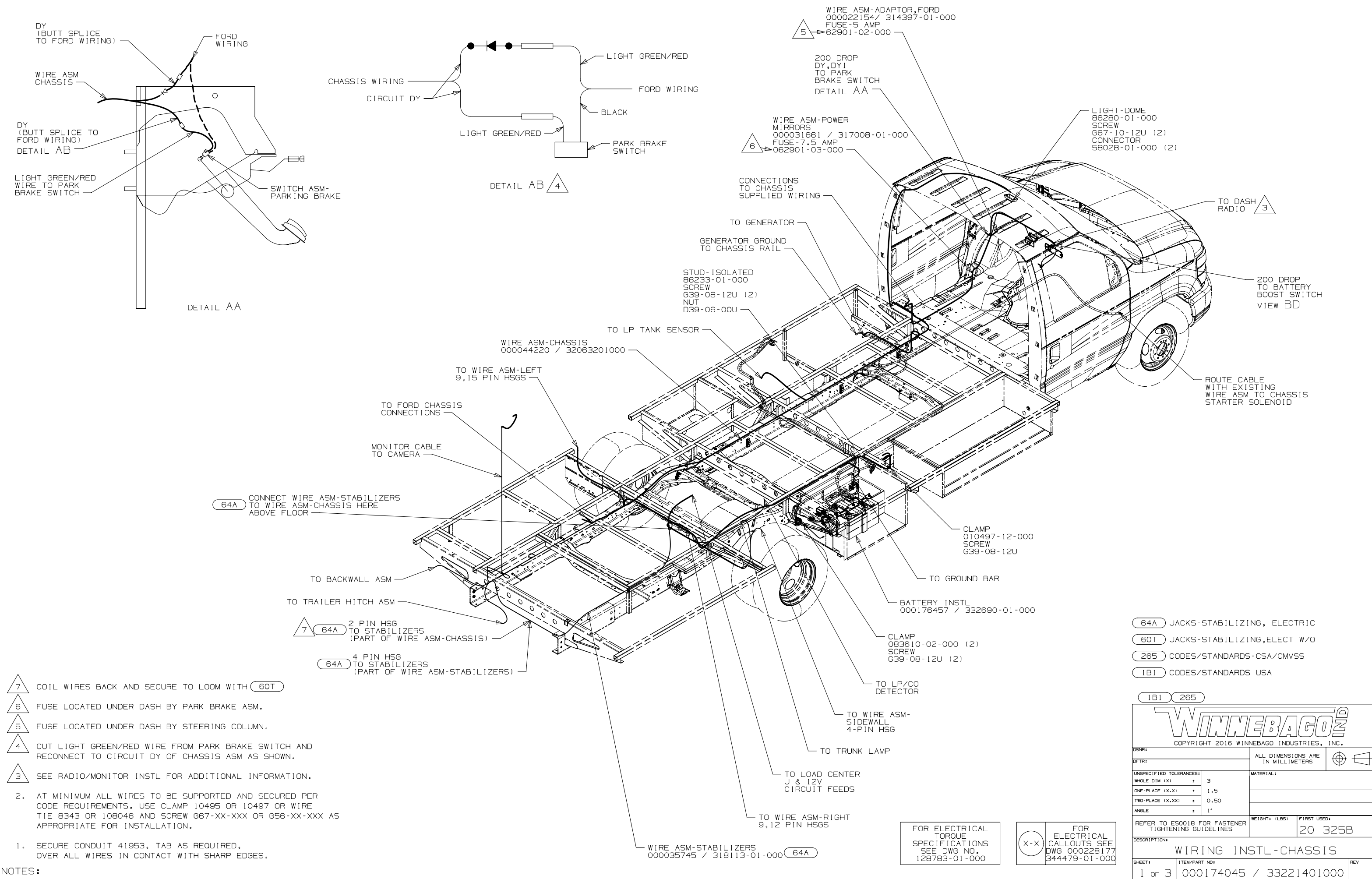


8 7 6 5 4 3 2 1



- 7 COIL WIRES BACK AND SECURE TO LOOM WITH 60T
- 6 FUSE LOCATED UNDER DASH BY PARK BRAKE ASM.
- 5 FUSE LOCATED UNDER DASH BY STEERING COLUMN.
- 4 CUT LIGHT GREEN/RED WIRE FROM PARK BRAKE SWITCH AND RECONNECT TO CIRCUIT DY OF CHASSIS ASM AS SHOWN.
- 3 SEE RADIO/MONITOR INSTL FOR ADDITIONAL INFORMATION.

2. AT MINIMUM ALL WIRES TO BE SUPPORTED AND SECURED PER CODE REQUIREMENTS. USE CLAMP 10495 OR 10497 OR WIRE TIE 8343 OR 108046 AND SCREW 667-XX-XXX OR G56-XX-XXX AS APPROPRIATE FOR INSTALLATION.
1. SECURE CONDUIT 41953, TAB AS REQUIRED, OVER ALL WIRES IN CONTACT WITH SHARP EDGES.

NOTES:

64A CONNECT WIRE ASM-STABILIZERS TO WIRE ASM-CHASSIS HERE ABOVE FLOOR

7 64A 2 PIN HSG TO STABILIZERS (PART OF WIRE ASM-CHASSIS)

64A 4 PIN HSG TO STABILIZERS (PART OF WIRE ASM-STABILIZERS)

- 64A JACKS-STABILIZING, ELECTRIC
- 60T JACKS-STABILIZING, ELECT W/O
- 265 CODES/STANDARDS-CSA/CMVSS
- 1B1 CODES/STANDARDS USA

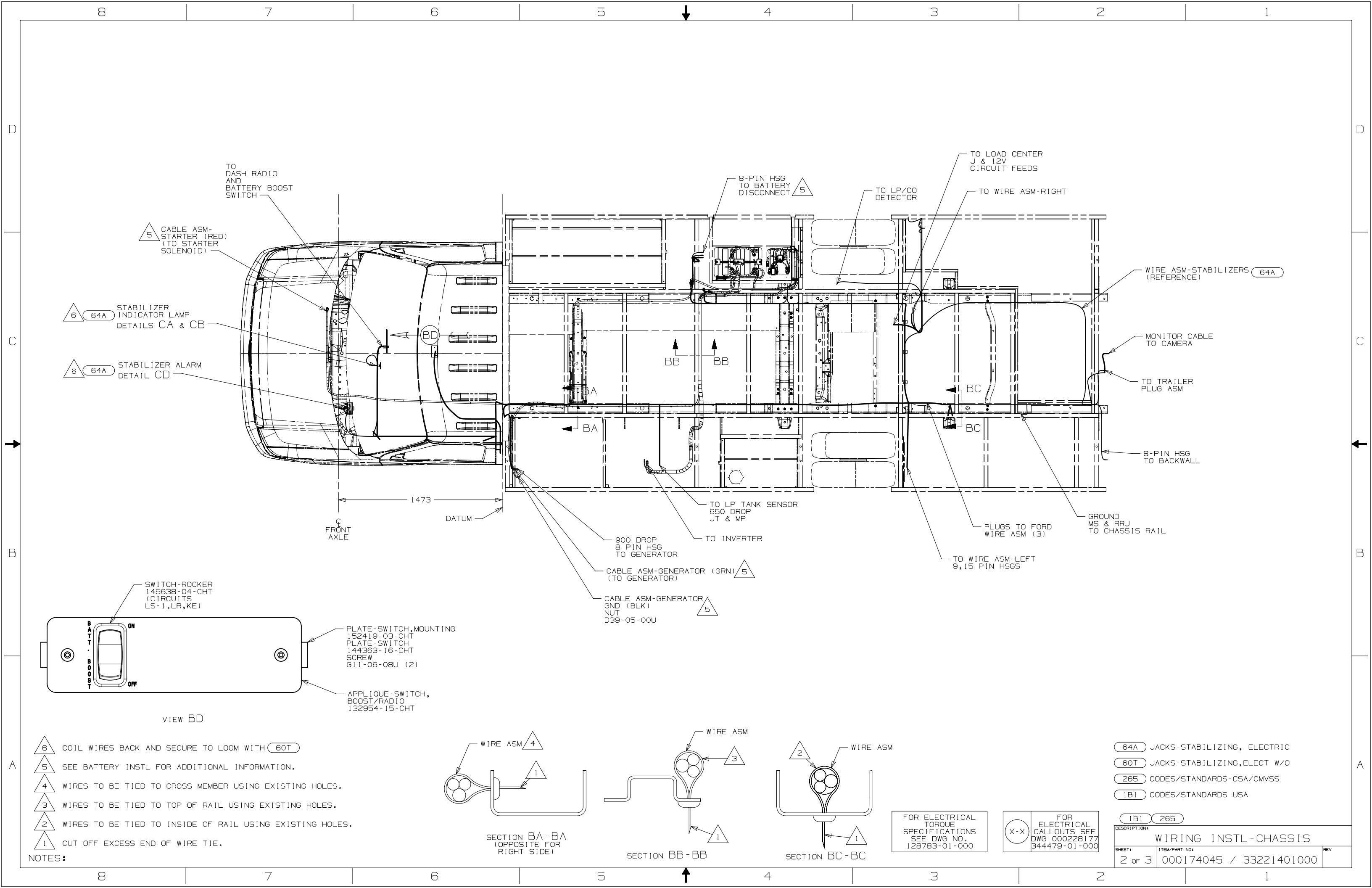
**WINNEBAGO**  
COPYRIGHT 2016 WINNEBAGO INDUSTRIES, INC.

DSNR:	ALL DIMENSIONS ARE IN MILLIMETERS	
DFTR:		
UNSPECIFIED TOLERANCES:	MATERIAL:	
WHOLE DIM (X) ± 3		
ONE-PLACE (X,XX) ± 1.5		
TWO-PLACE (X,XX) ± 0.50		
ANGLE ± 1°		
REFER TO ES0018 FOR FASTENER TIGHTENING GUIDELINES	WEIGHT (LBS)	FIRST USED
		20 325B
DESCRIPTION: WIRING INSTL-CHASSIS		
SHEET: 1 OF 3	ITEM/PART NO: 000174045 / 33221401000	REV:

FOR ELECTRICAL TORQUE SPECIFICATIONS SEE DWG NO. 128783-01-000

FOR ELECTRICAL CALLOUTS SEE DWG 000228177 344479-01-000

8 7 6 5 4 3 2 1



TO DASH RADIO AND BATTERY BOOST SWITCH

5 CABLE ASM-STARTER (RED) (TO STARTER SOLENOID)

6 64A STABILIZER INDICATOR LAMP DETAILS CA & CB

6 64A STABILIZER ALARM DETAIL CD

8-PIN HSG TO BATTERY DISCONNECT 5

TO LP/CO DETECTOR

TO LOAD CENTER J & 12V CIRCUIT FEEDS

TO WIRE ASM-RIGHT

WIRE ASM-STABILIZERS (REFERENCE) 64A

MONITOR CABLE TO CAMERA

TO TRAILER PLUG ASM

8-PIN HSG TO BACKWALL

PLUGS TO FORD WIRE ASM (3)

GROUND MS & RRJ TO CHASSIS RAIL

TO LP TANK SENSOR 650 DROP JT & MP

900 DROP 8 PIN HSG TO GENERATOR

CABLE ASM-GENERATOR (GRN) (TO GENERATOR) 5

CABLE ASM-GENERATOR GND (BLK) NUT D39-05-00U 5

TO INVERTER

1473 DATUM FRONT AXLE

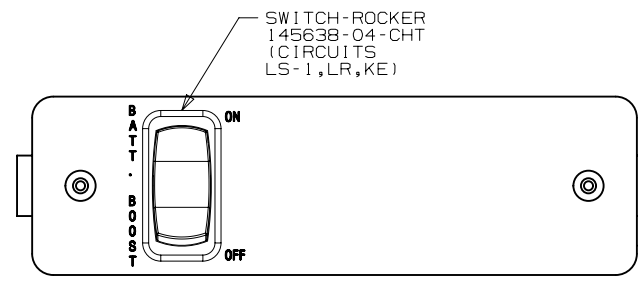


PLATE-SWITCH, MOUNTING 152419-03-CHT  
PLATE-SWITCH 144363-16-CHT  
SCREW 611-06-08U (2)

APPLIQUE-SWITCH, BOOST/RADIO 132954-15-CHT

VIEW BD

6 COIL WIRES BACK AND SECURE TO LOOM WITH 60T

5 SEE BATTERY INSTL FOR ADDITIONAL INFORMATION.

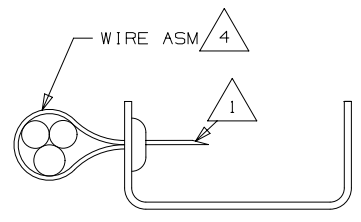
4 WIRES TO BE TIED TO CROSS MEMBER USING EXISTING HOLES.

3 WIRES TO BE TIED TO TOP OF RAIL USING EXISTING HOLES.

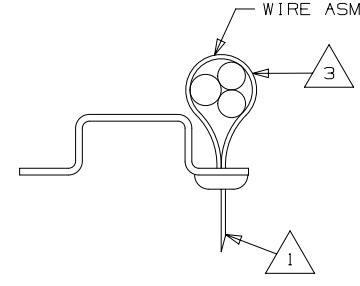
2 WIRES TO BE TIED TO INSIDE OF RAIL USING EXISTING HOLES.

1 CUT OFF EXCESS END OF WIRE TIE.

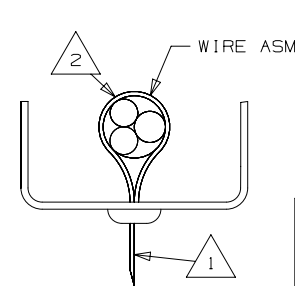
NOTES:



SECTION BA-BA (OPPOSITE FOR RIGHT SIDE)



SECTION BB-BB



SECTION BC-BC

FOR ELECTRICAL TORQUE SPECIFICATIONS SEE DWG NO. 128783-01-000

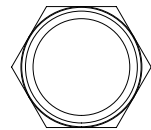
FOR ELECTRICAL CALLOUTS SEE DWG 000228177 344479-01-000

- 64A JACKS-STABILIZING, ELECTRIC
- 60T JACKS-STABILIZING, ELECT W/O
- 265 CODES/STANDARDS-CSA/CMVSS
- 1B1 CODES/STANDARDS USA

DESCRIPTION		1B1 265	
WIRING INSTL-CHASSIS			
SHEET#	ITEM/PART NO#	REV	
2 of 3	000174045 / 33221401000		

STABILIZER DOWN

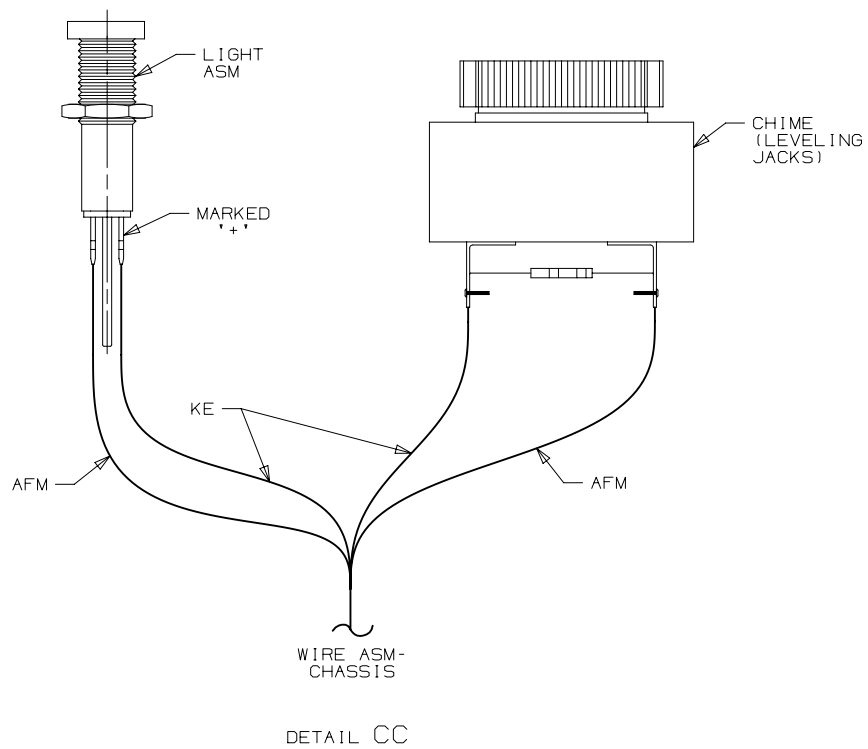
LABEL-STABILIZER DOWN  
000007625 / 310619-01-CHT



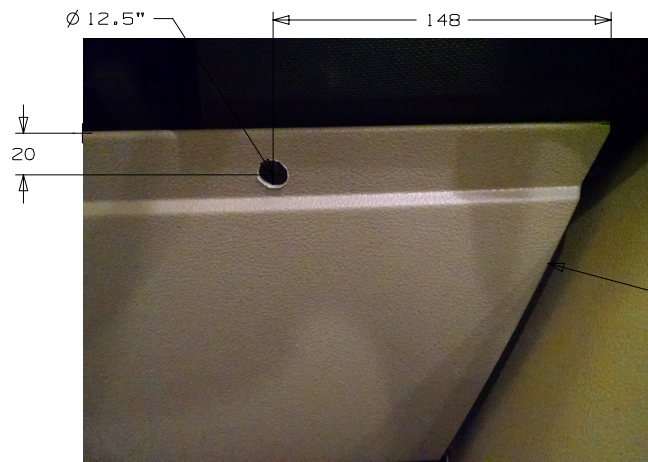
LIGHT ASM-INDICATOR, RED  
190682-01-000  
DETAIL CC



DETAIL CA

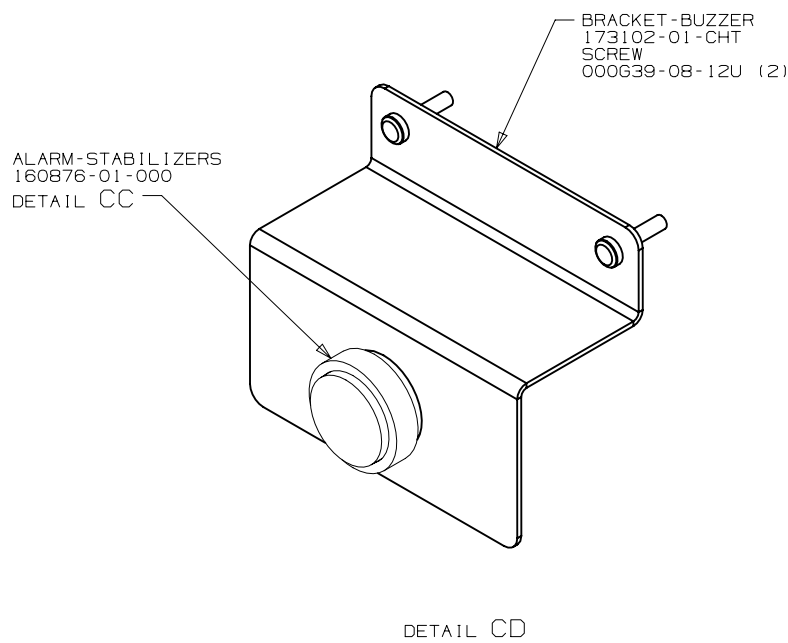


DETAIL CC



RIGHT SIDE OF  
STEERING COLUMN

DETAIL CB



DETAIL CD

1 FOR HOLE SIZE AND LOCATION SEE DETAIL CB.  
NOTES:

FOR ELECTRICAL  
TORQUE  
SPECIFICATIONS  
SEE DWG NO.  
128783-01-000

FOR  
ELECTRICAL  
CALLOUTS SEE  
DWG 000228177  
344479-01-000

64A JACKS-STABILIZING, ELECTRIC

265 CODES/STANDARDS-CSA/CMVSS

1B1 CODES/STANDARDS USA

1B1 265 64A

DESCRIPTION:  
WIRING INSTL-CHASSIS

SHEET# 3 of 3 ITEM/PART NO# 000174045 / 33221401000 REV