

ATS ASM
000181436 / 333785-01-000

10 GA WIRE
FROM ATS ASM
TO LOAD CENTER

ATS GROUND

500 DROP (GND)
FROM LOAD CENTER TO
CHASSIS GROUND BOLT

INVERTER-2000 WATT, 80 AMP CHARGE
000160559 / 328076-01-000
COVER-INVERTER ASM
000260362 / 351251-01-CHT
CLIP-TRIM
000130861 / 316446-06-CHT (2)
SCREW
000G67-10-16U (12)
COVER-WIRES
000162316 / 328657-01-CHT
SCREW
000G39-10-12U (2)
COVER-INVERTER.BACK
000259816 / 351227-01-CHT
SCREW
000G39-10-12U
CONNECTOR-PLASTIC,3/8AVG WI
008356-01-000 (2)

RCP-2 (BLU)
EXT COMPT

THROW IN WIRE #3
THROW IN WIRE #2

TO GENERATOR 33F

33F GENERATOR CABLE ASM

TO GENERATOR 4 52G

CLAMP
10497-10-000 (3)
SCREW
G39-08-12U (3) 33F OR 52G

- 33F GEN-3.2 KW ONAN DIESEL
- 52G GEN-3.6KW ONAN LP MICROQUIET
- 265 CODES/STANDARDS-CSA/CMVSS
- 1B1 CODES/STANDARDS USA

1B1 265



COPYRIGHT 2016 WINNEBAGO INDUSTRIES, INC.

DSNR:		ALL DIMENSIONS ARE IN MILLIMETERS	
DFT:		MATERIAL:	
UNSPECIFIED TOLERANCES:			
WHOLE DIM (X)	: 3		
ONE-PLACE (X.X)	: 1.5		
TWO-PLACE (X.XX)	: 0.50		
ANGLE	: 1°		

REFER TO ES0018 FOR FASTENER
TIGHTENING GUIDELINES

WEIGHT: (LBS) FIRST USED:
20 524V

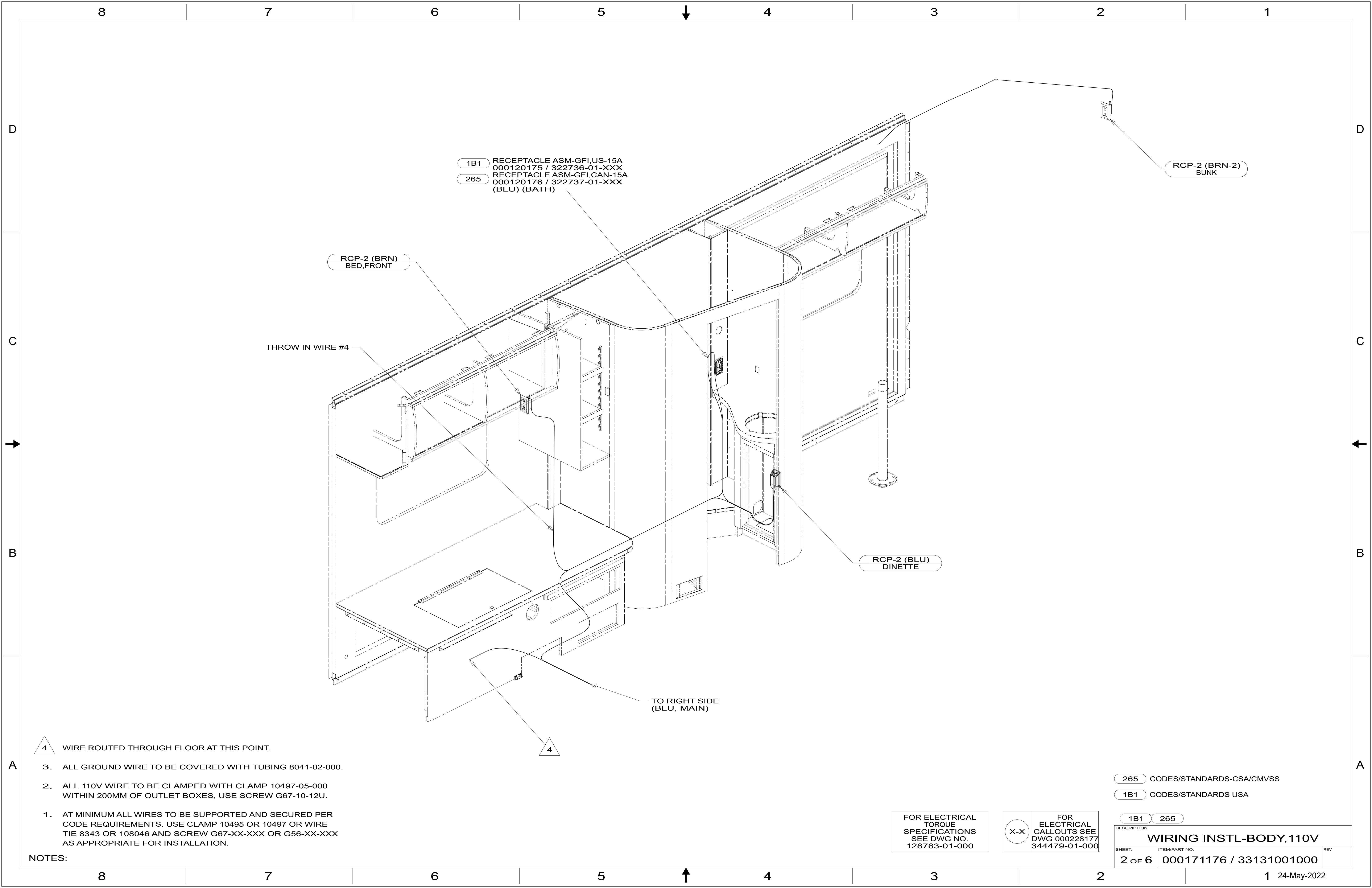
WIRING INSTL-BODY,110V

SHEET: 1 OF 6 ITEM/PART NO: 000171176 / 33131001000 REF: 1 24-May-2022

FOR ELECTRICAL
TORQUE
SPECIFICATIONS
SEE DWG NO.
128783-01-000

FOR ELECTRICAL
CALLOUTS SEE
DWG 000228177
344479-01-000

- NOTES:
- 5 WIRE ROUTED THROUGH FLOOR AT THIS POINT.
 - 4 SEE GENERATOR INSTL FOR ADDITIONAL INFORMATION.
 3. ALL GROUND WIRE TO BE COVERED WITH TUBING 8041-02-000.
 2. ALL 110V WIRE TO BE CLAMPED WITH CLAMP 10497-05-000 WITHIN 200MM OF OUTLET BOXES, USE SCREW G67-10-12U.
 1. AT MINIMUM ALL WIRES TO BE SUPPORTED AND SECURED PER CODE REQUIREMENTS. USE CLAMP 10495 OR 10497 OR WIRE TIE 8343 OR 108046 AND SCREW G67-XX-XXX OR G56-XX-XXX AS APPROPRIATE FOR INSTALLATION.



1B1 RECEPTACLE ASM-GFI, US-15A
000120175 / 322736-01-XXX
265 RECEPTACLE ASM-GFI, CAN-15A
000120176 / 322737-01-XXX
(BLU) (BATH)

RCP-2 (BRN)
BED, FRONT

THROW IN WIRE #4

RCP-2 (BLU)
DINETTE

RCP-2 (BRN-2)
BUNK

TO RIGHT SIDE
(BLU, MAIN)

4 WIRE ROUTED THROUGH FLOOR AT THIS POINT.

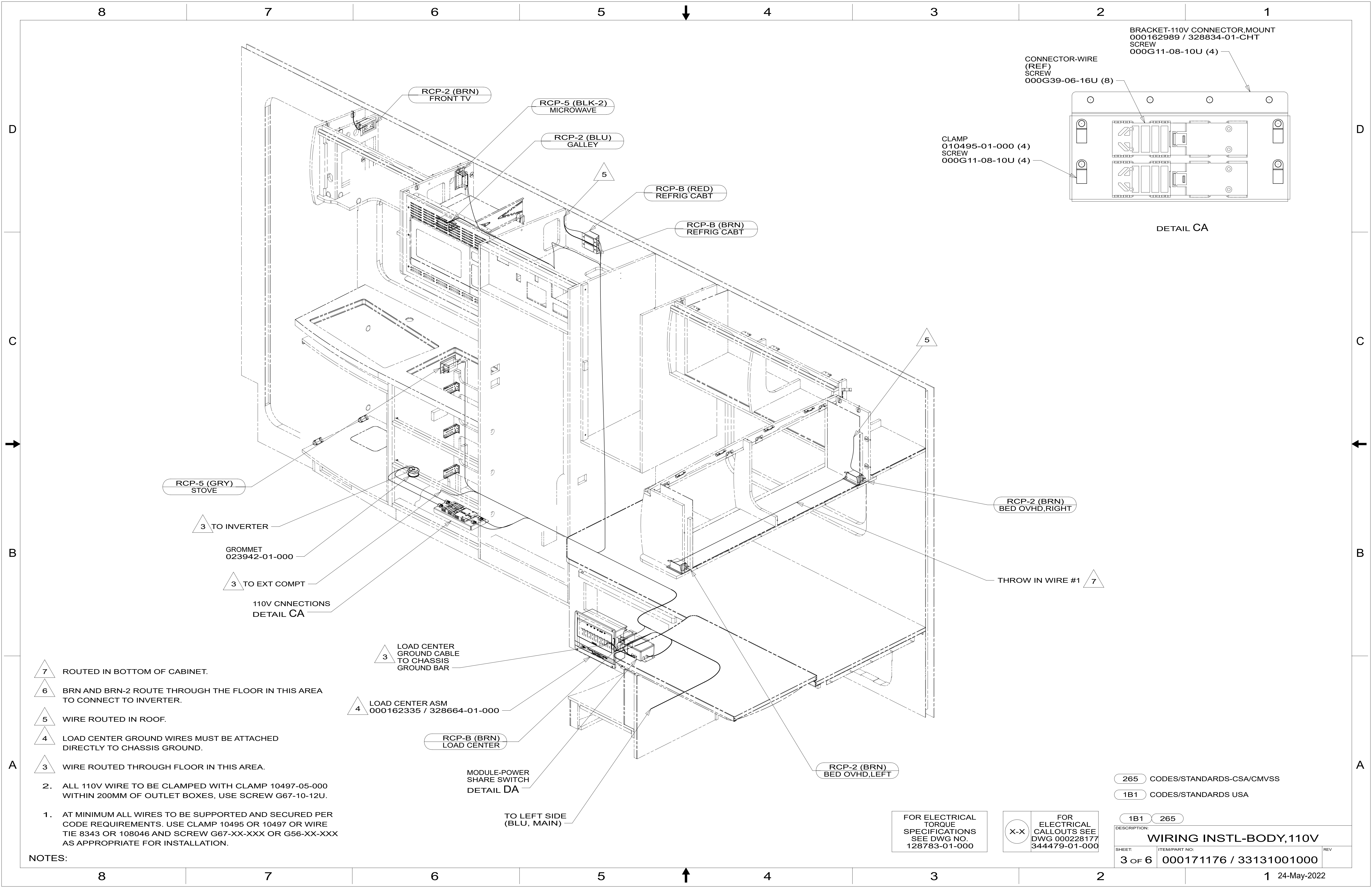
- NOTES:
1. AT MINIMUM ALL WIRES TO BE SUPPORTED AND SECURED PER CODE REQUIREMENTS. USE CLAMP 10495 OR 10497 OR WIRE TIE 8343 OR 108046 AND SCREW G67-XX-XXX OR G56-XX-XXX AS APPROPRIATE FOR INSTALLATION.
 2. ALL 110V WIRE TO BE CLAMPED WITH CLAMP 10497-05-000 WITHIN 200MM OF OUTLET BOXES, USE SCREW G67-10-12U.
 3. ALL GROUND WIRE TO BE COVERED WITH TUBING 8041-02-000.

265 CODES/STANDARDS-CSA/CMVSS
1B1 CODES/STANDARDS USA

FOR ELECTRICAL
TORQUE
SPECIFICATIONS
SEE DWG NO.
128783-01-000

FOR ELECTRICAL
CALLOUTS SEE
DWG 000228177
344479-01-000

DESCRIPTION:	
1B1 265	
WIRING INSTL-BODY, 110V	
SHEET:	ITEM/PART NO:
2 OF 6	000171176 / 33131001000
REV	



BRACKET-110V CONNECTOR.MOUNT
000162989 / 328834-01-CHT
SCREW
000G11-08-10U (4)

CONNECTOR-WIRE
(REF)
SCREW
000G39-06-16U (8)

CLAMP
010495-01-000 (4)
SCREW
000G11-08-10U (4)

DETAIL CA

RCP-5 (GRY)
STOVE

3 TO INVERTER

GROMMET
023942-01-000

3 TO EXT COMPT

110V CNNECTIONS
DETAIL CA

3 LOAD CENTER
GROUND CABLE
TO CHASSIS
GROUND BAR

4 LOAD CENTER ASM
000162335 / 328664-01-000

RCP-B (BRN)
LOAD CENTER

MODULE-POWER
SHARE SWITCH
DETAIL DA

TO LEFT SIDE
(BLU, MAIN)

RCP-2 (BRN)
BED OVHD, RIGHT

THROW IN WIRE #1 7

RCP-2 (BRN)
BED OVHD, LEFT

- NOTES:
- 7 ROUTED IN BOTTOM OF CABINET.
 - 6 BRN AND BRN-2 ROUTE THROUGH THE FLOOR IN THIS AREA TO CONNECT TO INVERTER.
 - 5 WIRE ROUTED IN ROOF.
 - 4 LOAD CENTER GROUND WIRES MUST BE ATTACHED DIRECTLY TO CHASSIS GROUND.
 - 3 WIRE ROUTED THROUGH FLOOR IN THIS AREA.

2. ALL 110V WIRE TO BE CLAMPED WITH CLAMP 10497-05-000 WITHIN 200MM OF OUTLET BOXES, USE SCREW G67-10-12U.

1. AT MINIMUM ALL WIRES TO BE SUPPORTED AND SECURED PER CODE REQUIREMENTS. USE CLAMP 10495 OR 10497 OR WIRE TIE 8343 OR 108046 AND SCREW G67-XX-XXX OR G56-XX-XXX AS APPROPRIATE FOR INSTALLATION.

265 CODES/STANDARDS-CSA/CMVSS

1B1 CODES/STANDARDS USA

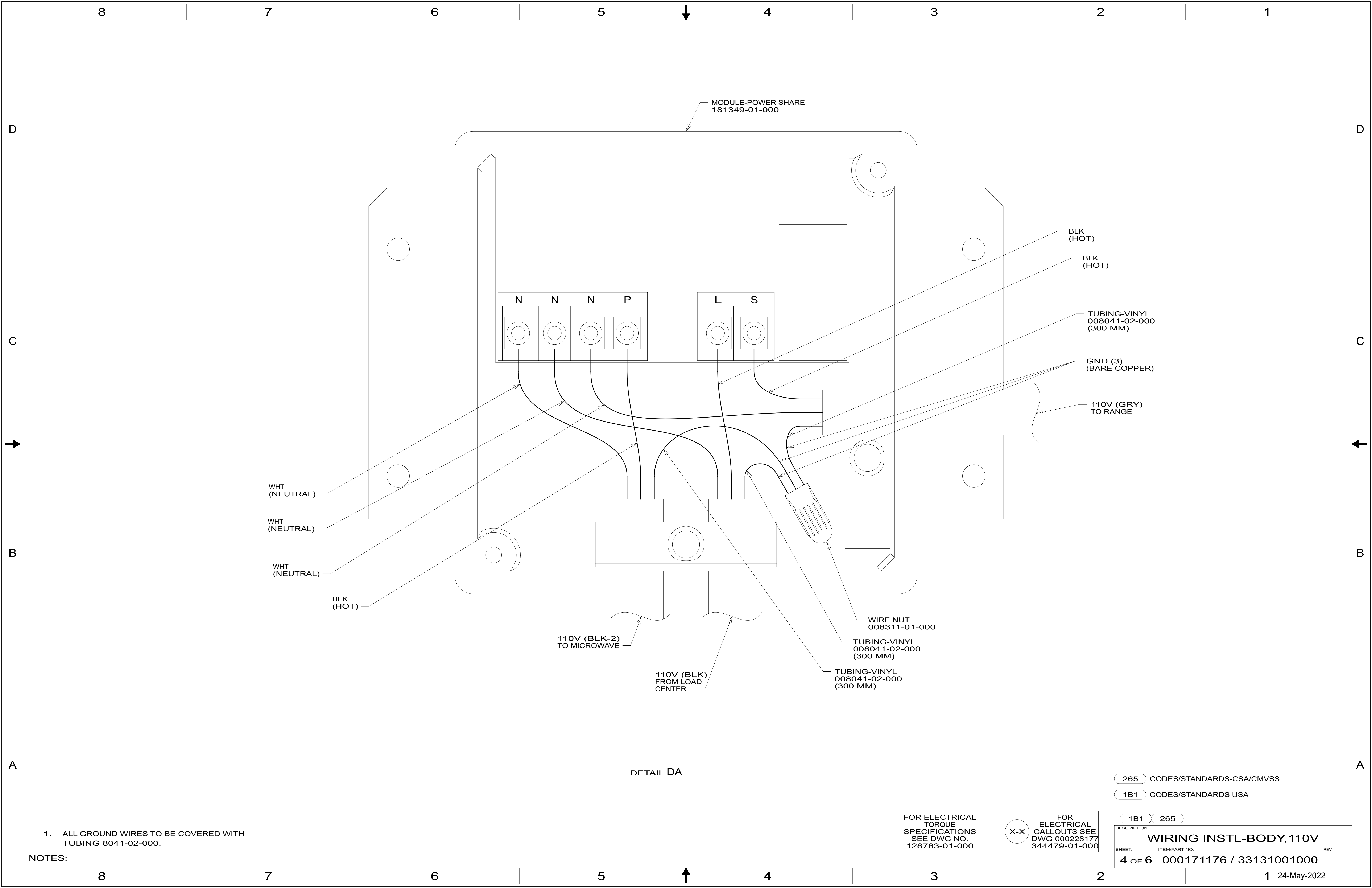
1B1 265

FOR ELECTRICAL
TORQUE
SPECIFICATIONS
SEE DWG NO.
128783-01-000

FOR ELECTRICAL
CALLOUTS SEE
DWG 000228177
344479-01-000

DESCRIPTION:
WIRING INSTL-BODY, 110V

SHEET: 3 OF 6 ITEM/PART NO.: 000171176 / 33131001000 REV:



MODULE-POWER SHARE
181349-01-000

N N N P

L S

BLK (HOT)

BLK (HOT)

TUBING-VINYL
008041-02-000
(300 MM)

GND (3)
(BARE COPPER)

110V (GRY)
TO RANGE

WHT
(NEUTRAL)

WHT
(NEUTRAL)

WHT
(NEUTRAL)

BLK
(HOT)

110V (BLK-2)
TO MICROWAVE

110V (BLK)
FROM LOAD
CENTER

WIRE NUT
008311-01-000

TUBING-VINYL
008041-02-000
(300 MM)

TUBING-VINYL
008041-02-000
(300 MM)

DETAIL DA

265 CODES/STANDARDS-CSA/CMVSS

1B1 CODES/STANDARDS USA

1B1 265

DESCRIPTION:
WIRING INSTL-BODY,110V

SHEET: 4 OF 6 ITEM/PART NO: 000171176 / 33131001000 REV

NOTES:
1. ALL GROUND WIRES TO BE COVERED WITH TUBING 8041-02-000.

FOR ELECTRICAL TORQUE SPECIFICATIONS SEE DWG NO. 128783-01-000

FOR ELECTRICAL CALLOUTS SEE DWG 000228177 344479-01-000

8

7

6

5

4

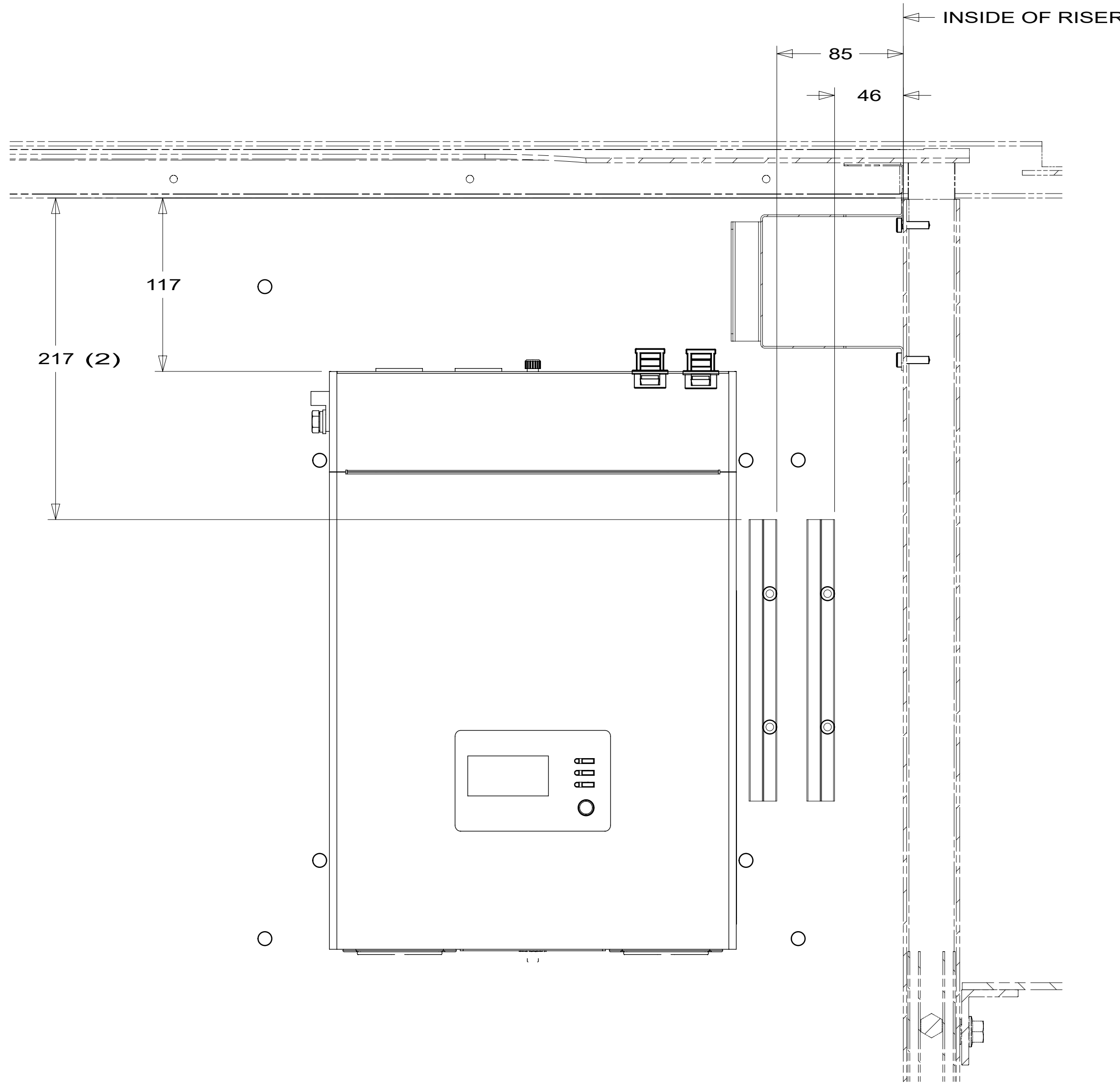
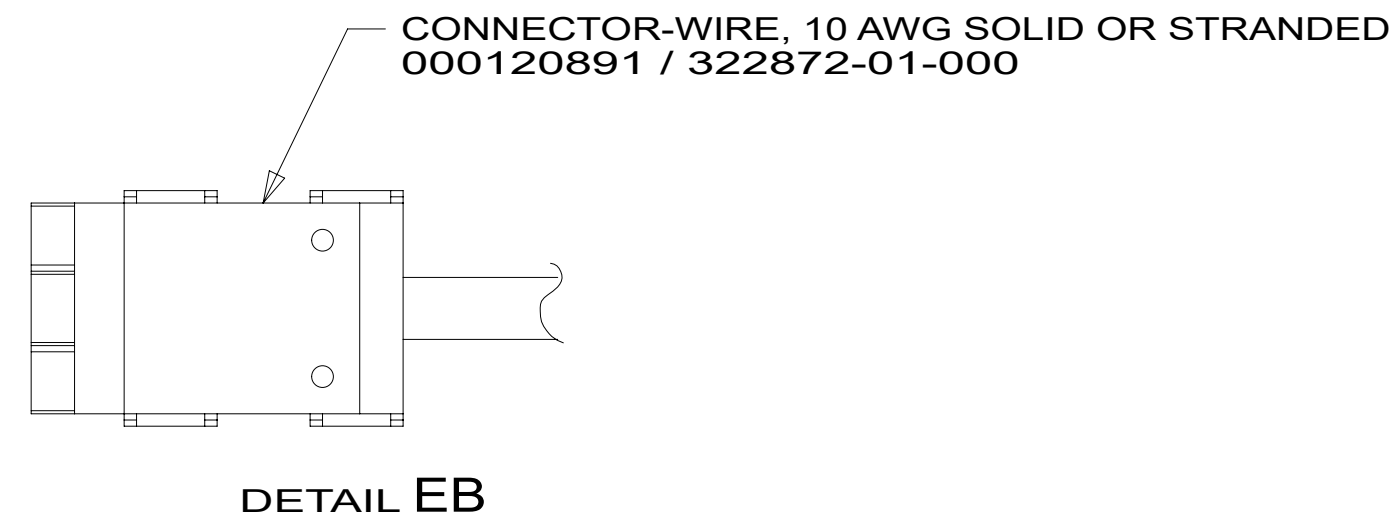
3

2

1

RED	1B1	136135-07-040	
	265	136136-07-040	
BLK	1B1	136135-06-010	
	265	136136-06-010	
BLK-2	1B1	136135-22-052	
	265	136136-22-052	
GRY	1B1	136135-15-040	
	265	136136-15-040	
BRN	1B1	136131-03-042	
	265	136134-03-042	
BLU	1B1	136131-02-210	
	265	136134-02-210	
ORG	1B1	136137-01-030	△ 2 3
	265	136138-01-030	△ 2 3
ORG-2	1B1	136137-01-030	△ 2 4
	265	136138-01-030	△ 2 4
MAIN	1B1	136137-01-042	
	265	136138-01-042	
GENERATOR CABLE ASM	1B1	164957-02-044	33F
	265	164957-04-044	33F

THROW IN WIRE #1	1B1	136131-03-016	
	265	136134-03-016	
THROW IN WIRE #2	1B1	136137-01-012	△ 2 3
	265	136138-01-012	△ 2 3
THROW IN WIRE #3	1B1	136137-01-012	△ 2 4
	265	136138-01-012	△ 2 4
THROW IN WIRE #4	1B1	136131-03-050	
	265	136134-03-050	
GROUND		136145-02-036	△ 5



VIEW EA

- △ 5 ONE GROUND WIRE GOES TO DISTRIBUTION PANEL-12V.
- △ 4 MARK CABLE WITH (2) WRAPS OF ORG TAPE.
- △ 3 MARK CABLE WITH (1) WRAP OF ORG TAPE.
- △ 2 FOR CONNECTOR INSTALLATION SEE DETAIL EB.

1. ALL GROUND WIRES TO BE COVERED WITH TUBING 8041-02-000.

NOTES:

- 33F GEN-3.2 KW ONAN DIESEL
- 265 CODES/STANDARDS-CSA/CMVSS
- 1B1 CODES/STANDARDS USA

FOR ELECTRICAL TORQUE SPECIFICATIONS SEE DWG NO. 128783-01-000

FOR ELECTRICAL CALLOUTS SEE DWG 000228177 344479-01-000

DESCRIPTION:	1B1 265	
WIRING INSTL-BODY,110V		
SHEET:	ITEM/PART NO:	REV
5 OF 6	000171176 / 33131001000	

8

7

6

5

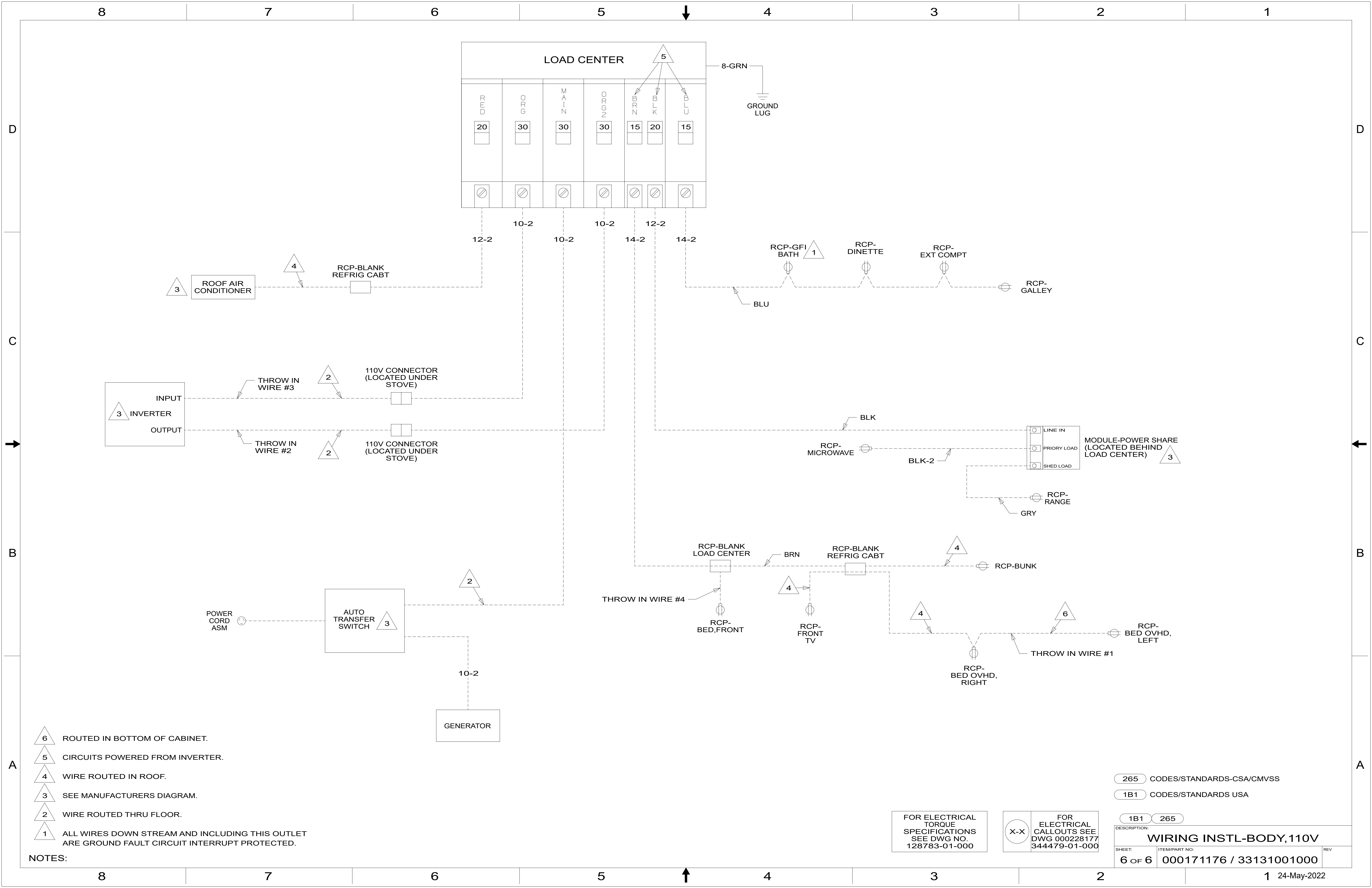
4

3

2

1

24-May-2022



- NOTES:
- 6 ROUTED IN BOTTOM OF CABINET.
 - 5 CIRCUITS POWERED FROM INVERTER.
 - 4 WIRE ROUTED IN ROOF.
 - 3 SEE MANUFACTURERS DIAGRAM.
 - 2 WIRE ROUTED THRU FLOOR.
 - 1 ALL WIRES DOWN STREAM AND INCLUDING THIS OUTLET ARE GROUND FAULT CIRCUIT INTERRUPT PROTECTED.

FOR ELECTRICAL TORQUE SPECIFICATIONS SEE DWG NO. 128783-01-000

FOR ELECTRICAL CALLOUTS SEE DWG 000228177 344479-01-000

265 CODES/STANDARDS-CSA/CMVSS
 1B1 CODES/STANDARDS USA

DESCRIPTION: WIRING INSTL-BODY, 110V	
SHEET: 6 OF 6	ITEM/PART NO.: 000171176 / 3313100100
REV 1 24-May-2022	