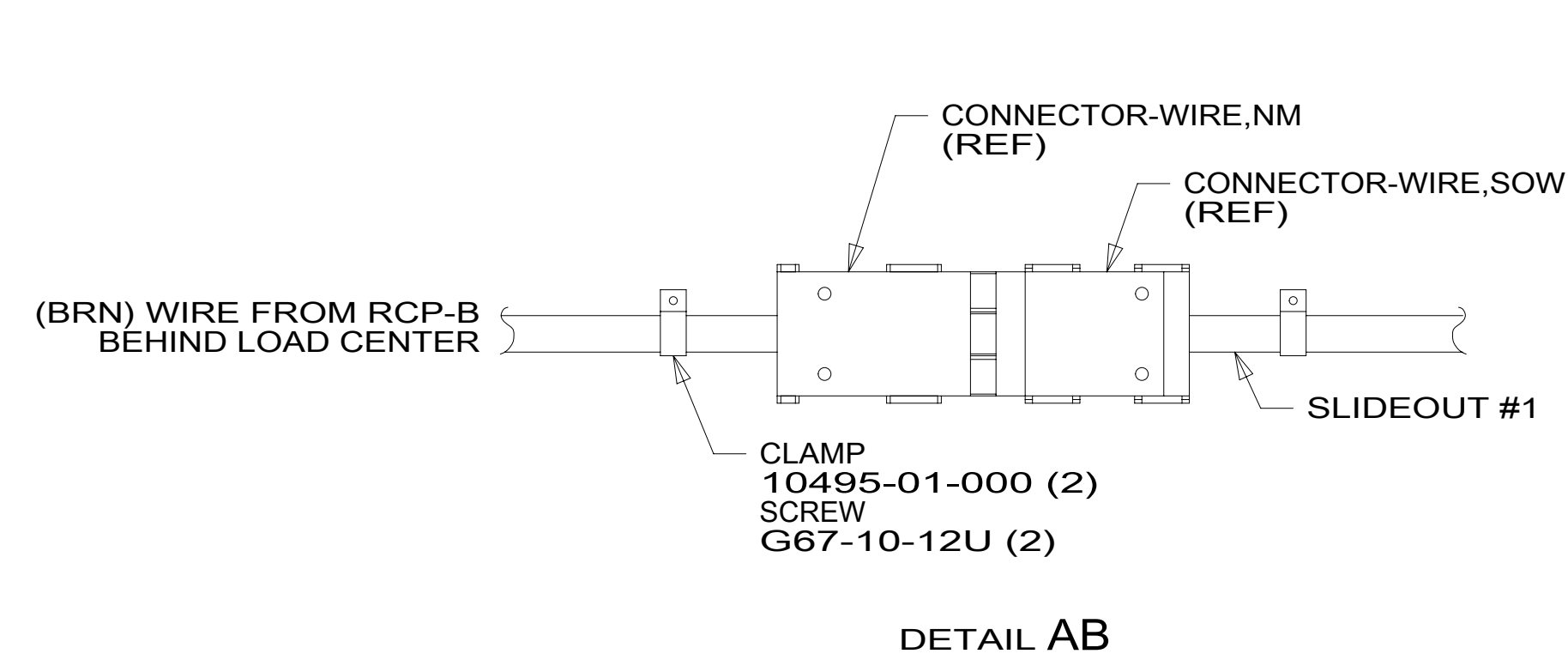


- 265 CODES/STANDARDS-CSA/CMVSS
 1B1 CODES/STANDARDS USA
 1B1 265
- 4 DATA CABLE PART OF WIRE ASM-COACH.
 3 WIRE ROUTES THROUGH FLOOR IN THIS AREA.
2. AT MINIMUM ALL WIRES TO BE SUPPORTED AND SECURED PER CODE REQUIREMENTS. USE CLAMP 10495 OR 10497 OR 083610 OR WIRE TIE 8343 OR 108046 AND SCREW G67-XX-XXX OR G56-XX-XXX AS APPROPRIATE FOR INSTALLATION.
1. WIRES ROUTED UNDER FLOOR.

NOTES:

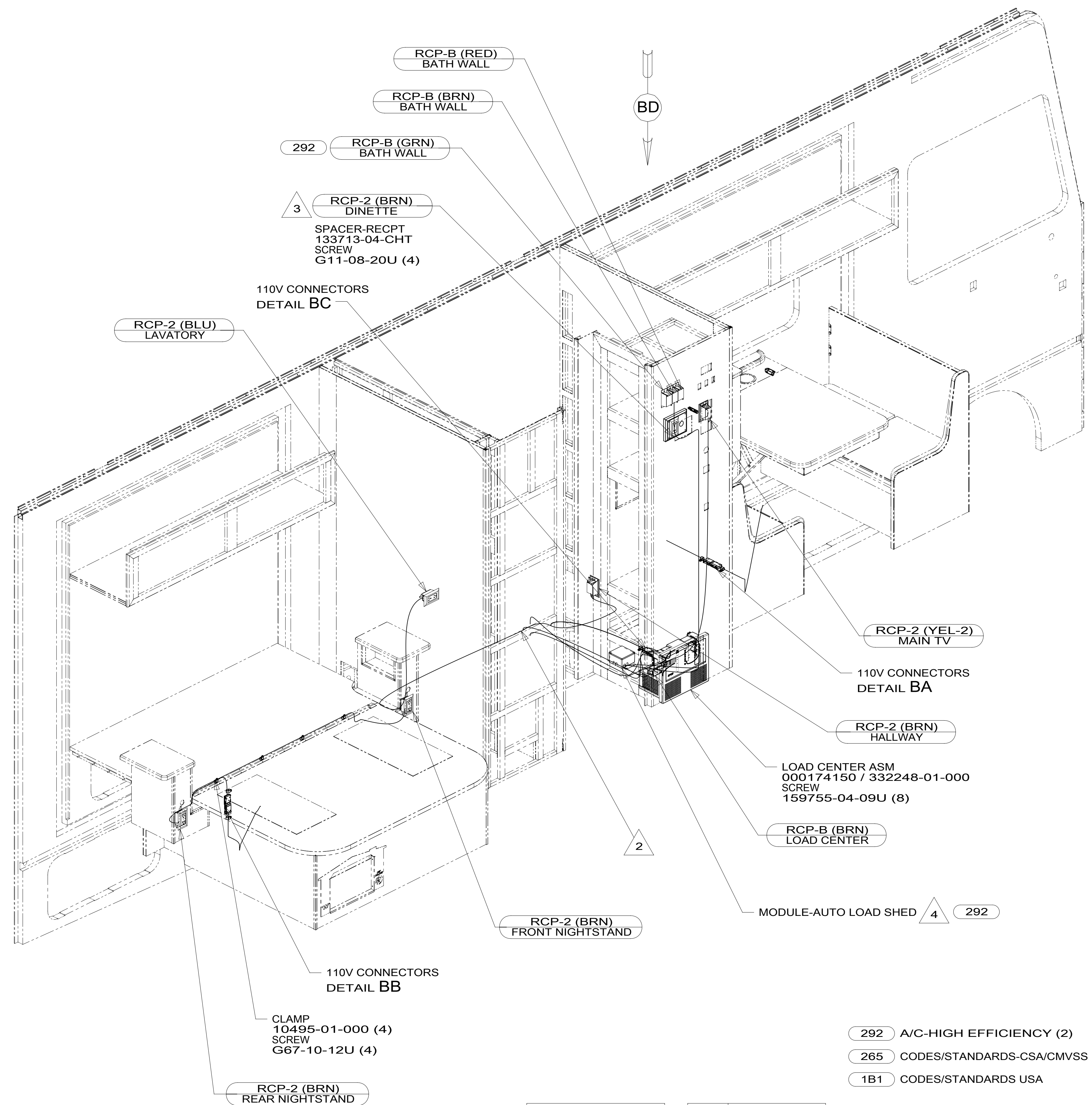
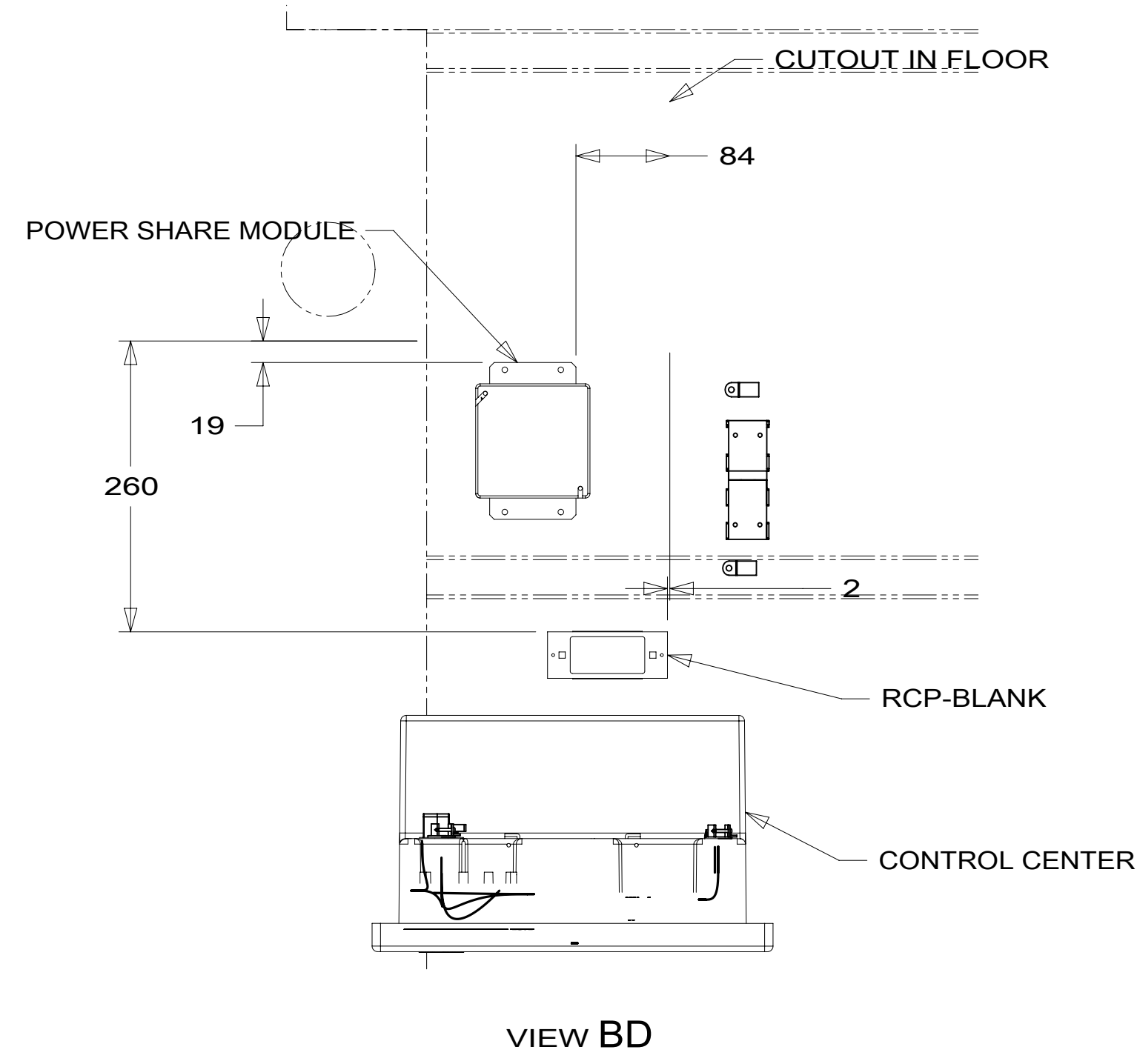
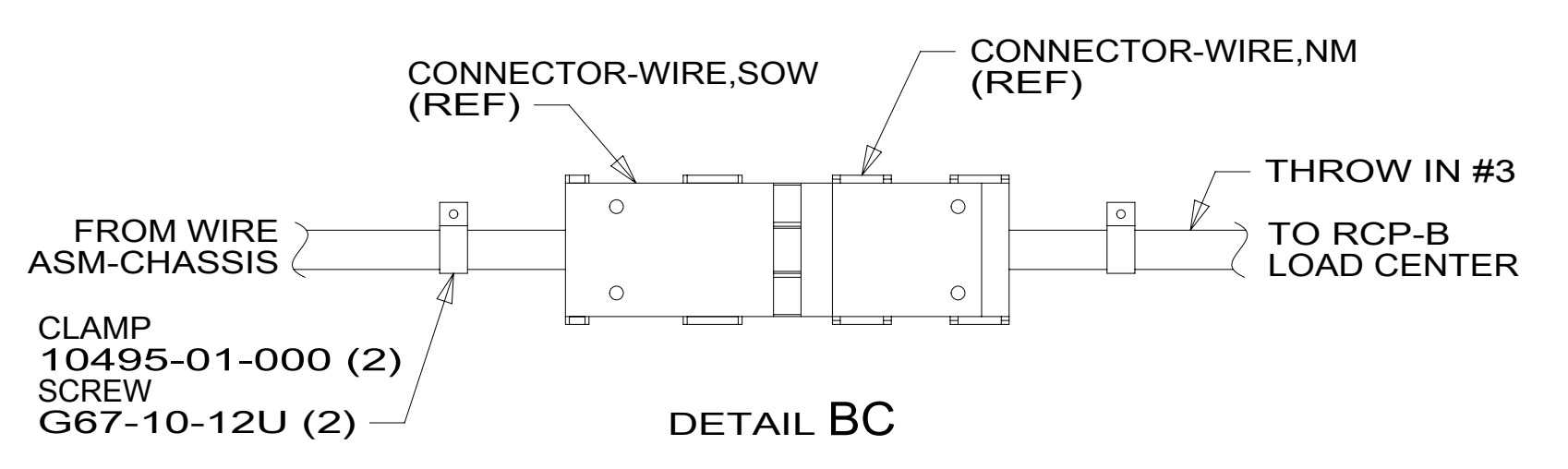
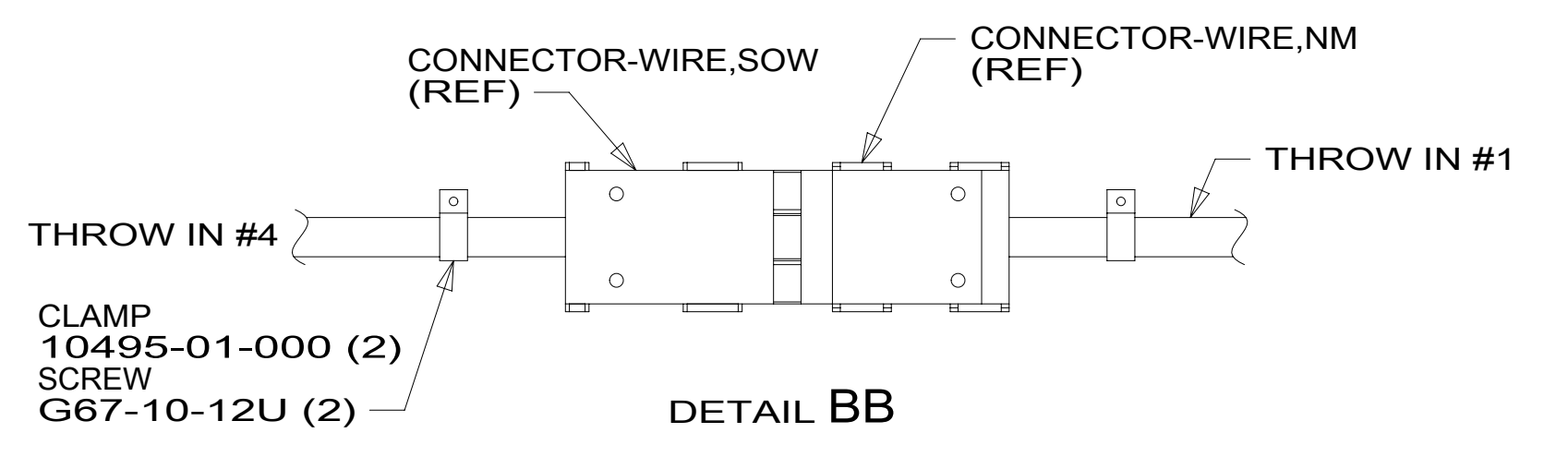
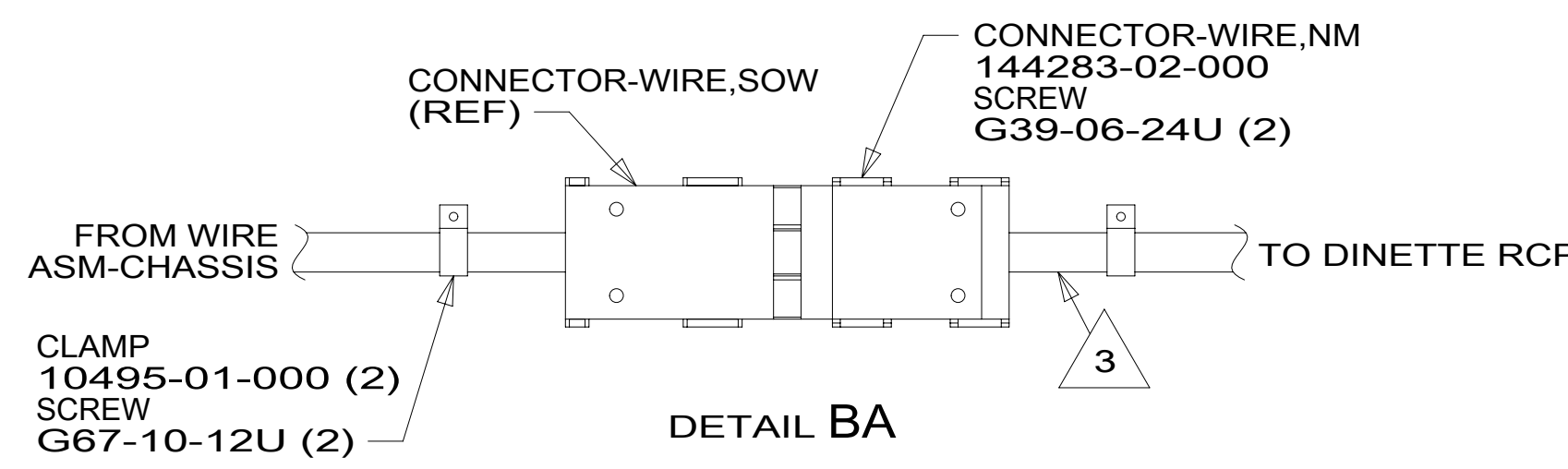


FOR ELECTRICAL TORQUE SPECIFICATIONS SEE DWG NO. 128783-01-000

FOR ELECTRICAL CALLOUTS SEE DWG NO. 121339-01-000

WINNEBAGO
 COPYRIGHT 2016 WINNEBAGO INDUSTRIES, INC.

DSNR:	ALL DIMENSIONS ARE IN MILLIMETERS	
DFFR:		
UNSPECIFIED TOLERANCES:	MATERIAL:	
WHOLE DIM (X) : 3		
ONE-PLACE (X.X) : 1.5		
TWO-PLACE (X.XX) : 0.50		
ANGLE : 1°		
REFER TO ES0018 FOR FASTENER TIGHTENING GUIDELINES	WEIGHT: (LBS)	FIRST USED:
		20 V28Y
DESCRIPTION:		
WIRING INSTL-BODY, 110V		
SHEET: 1 OF 7	ITEM/PART NO: 000169851 / 33083201000	REV:
REF:		



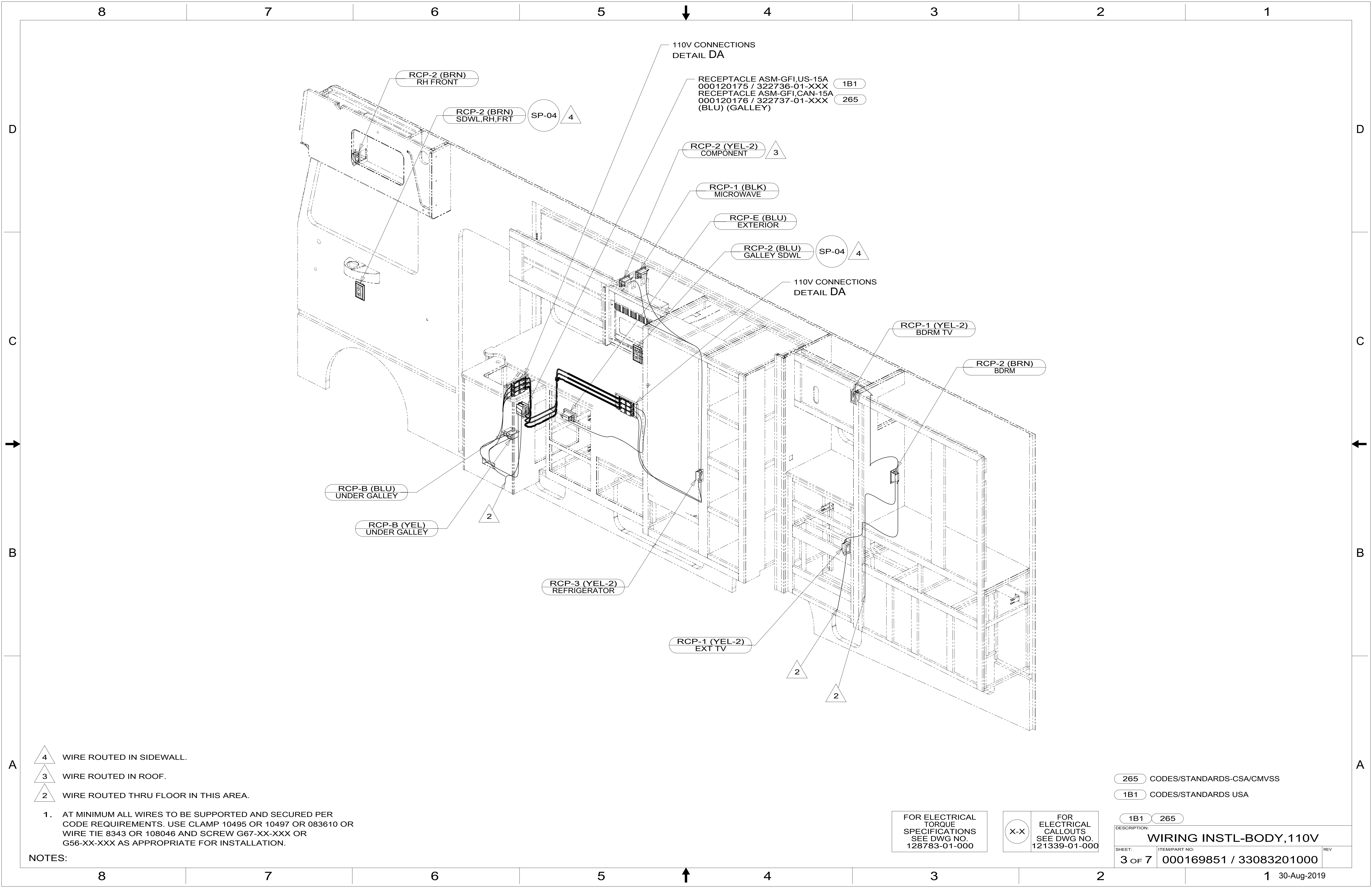
- NOTES:
- 4 SEE LOAD CENTER ASM FOR ADDITIONAL INFORMATION.
 - 3 WIRE ROUTED IN SIDEWALL.
 - 2 WIRE ROUTED THRU FLOOR IN THIS AREA.
 - 1. AT MINIMUM ALL WIRES TO BE SUPPORTED AND SECURED PER CODE REQUIREMENTS. USE CLAMP 10495 OR 10497 OR 083610 OR WIRE TIE 8343 OR 108046 AND SCREW G67-XX-XXX OR G56-XX-XXX AS APPROPRIATE FOR INSTALLATION.

- 292 A/C-HIGH EFFICIENCY (2)
- 265 CODES/STANDARDS-CSA/CMVSS
- 1B1 CODES/STANDARDS USA

FOR ELECTRICAL TORQUE SPECIFICATIONS SEE DWG NO. 128783-01-000

FOR ELECTRICAL CALLOUTS SEE DWG NO. 121339-01-000

DESCRIPTION:	
WIRING INSTL-BODY, 110V	
SHEET:	ITEM/PART NO.:
2 OF 7	000169851 / 33083201000
REV	



RCP-2 (BRN)
RH FRONT

RCP-2 (BRN)
SDWL,RH,FRT SP-04 4

110V CONNECTIONS
DETAIL DA

RECEPTACLE ASM-GFI,US-15A 1B1
000120175 / 322736-01-XXX
RECEPTACLE ASM-GFI,CAN-15A 265
000120176 / 322737-01-XXX
(BLU) (GALLEY)

RCP-2 (YEL-2)
COMPONENT 3

RCP-1 (BLK)
MICROWAVE

RCP-E (BLU)
EXTERIOR

RCP-2 (BLU)
GALLEY SDWL SP-04 4

110V CONNECTIONS
DETAIL DA

RCP-1 (YEL-2)
BDRM TV

RCP-2 (BRN)
BDRM

RCP-B (BLU)
UNDER GALLEY

RCP-B (YEL)
UNDER GALLEY 2

RCP-3 (YEL-2)
REFRIGERATOR

RCP-1 (YEL-2)
EXT TV 2

4 WIRE ROUTED IN SIDEWALL.

3 WIRE ROUTED IN ROOF.

2 WIRE ROUTED THRU FLOOR IN THIS AREA.

1. AT MINIMUM ALL WIRES TO BE SUPPORTED AND SECURED PER
CODE REQUIREMENTS. USE CLAMP 10495 OR 10497 OR 083610 OR
WIRE TIE 8343 OR 108046 AND SCREW G67-XX-XXX OR
G56-XX-XXX AS APPROPRIATE FOR INSTALLATION.

NOTES:

FOR ELECTRICAL
TORQUE
SPECIFICATIONS
SEE DWG NO.
128783-01-000

FOR
ELECTRICAL
CALLOUTS
SEE DWG NO.
121339-01-000

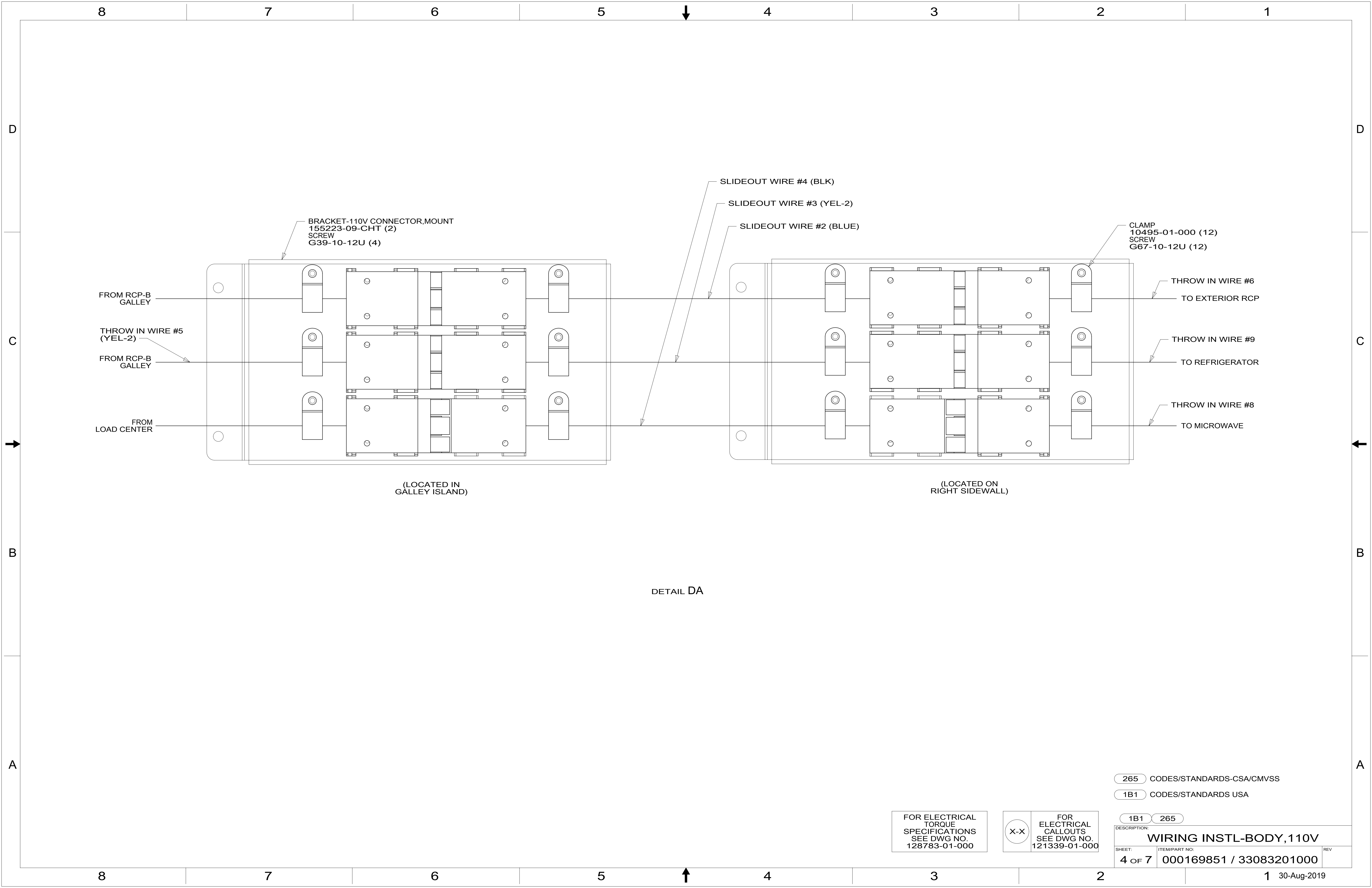
265 CODES/STANDARDS-CSA/CMVSS

1B1 CODES/STANDARDS USA

1B1 265

DESCRIPTION:
WIRING INSTL-BODY, 110V

SHEET: 3 OF 7 ITEM/PART NO: 000169851 / 33083201000 REV



BRACKET-110V CONNECTOR, MOUNT
155223-09-CHT (2)
SCREW
G39-10-12U (4)

FROM RCP-B
GALLEY

THROW IN WIRE #5
(YEL-2)

FROM RCP-B
GALLEY

FROM
LOAD CENTER

(LOCATED IN
GALLEY ISLAND)

SLIDEOUT WIRE #4 (BLK)

SLIDEOUT WIRE #3 (YEL-2)

SLIDEOUT WIRE #2 (BLUE)

CLAMP
10495-01-000 (12)
SCREW
G67-10-12U (12)

THROW IN WIRE #6
TO EXTERIOR RCP

THROW IN WIRE #9
TO REFRIGERATOR

THROW IN WIRE #8
TO MICROWAVE

(LOCATED ON
RIGHT SIDEWALL)

DETAIL DA

265 CODES/STANDARDS-CSA/CMVSS

1B1 CODES/STANDARDS USA

1B1 265

FOR ELECTRICAL
TORQUE
SPECIFICATIONS
SEE DWG NO.
128783-01-000

X-X

FOR
ELECTRICAL
CALLOUTS
SEE DWG NO.
121339-01-000

DESCRIPTION:
WIRING INSTL-BODY, 110V

SHEET: 4 OF 7 ITEM/PART NO: 000169851 / 33083201000 REV

1 30-Aug-2019

8

7

6

5

4

3

2

1



D

D

C

C

B

B

A

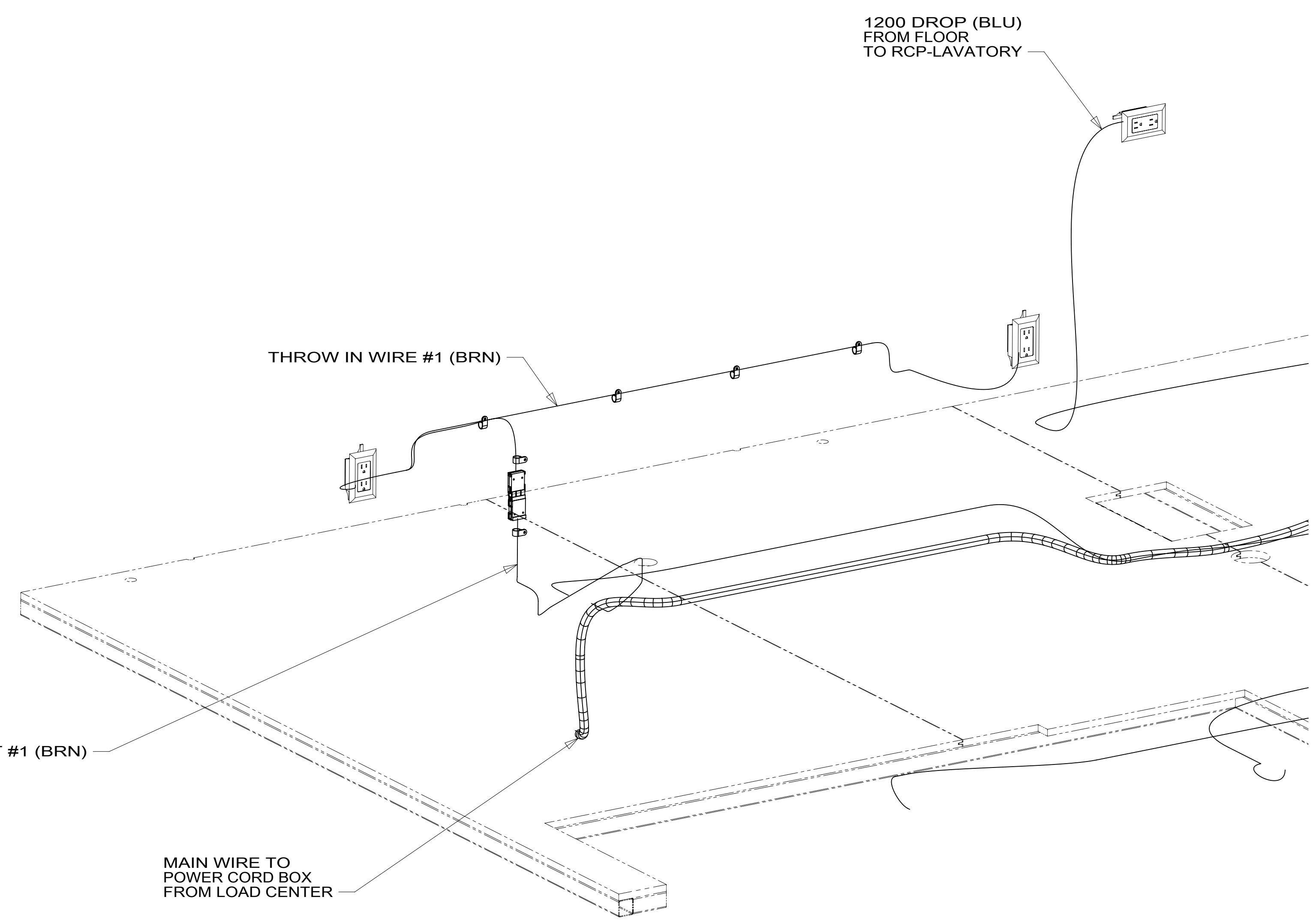
A

1200 DROP (BLU)
FROM FLOOR
TO RCP-LAVATORY

THROW IN WIRE #1 (BRN)

SLIDEOUT #1 (BRN)

MAIN WIRE TO
POWER CORD BOX
FROM LOAD CENTER



- 265 CODES/STANDARDS-CSA/CMVSS
- 1B1 CODES/STANDARDS USA

FOR ELECTRICAL
TORQUE
SPECIFICATIONS
SEE DWG NO.
128783-01-000

FOR
ELECTRICAL
CALLOUTS
SEE DWG NO.
121339-01-000

DESCRIPTION:	
WIRING INSTL-BODY, 110V	
SHEET:	ITEM/PART NO:
5 OF 7	000169851 / 33083201000
REV	

8

7

6

5

4

3

2

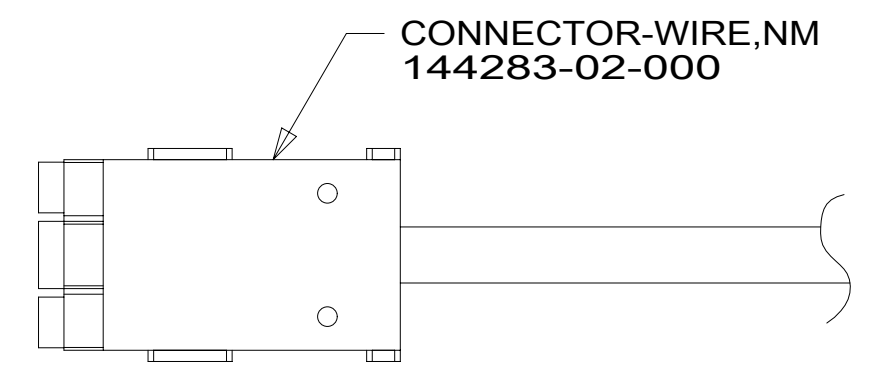
1



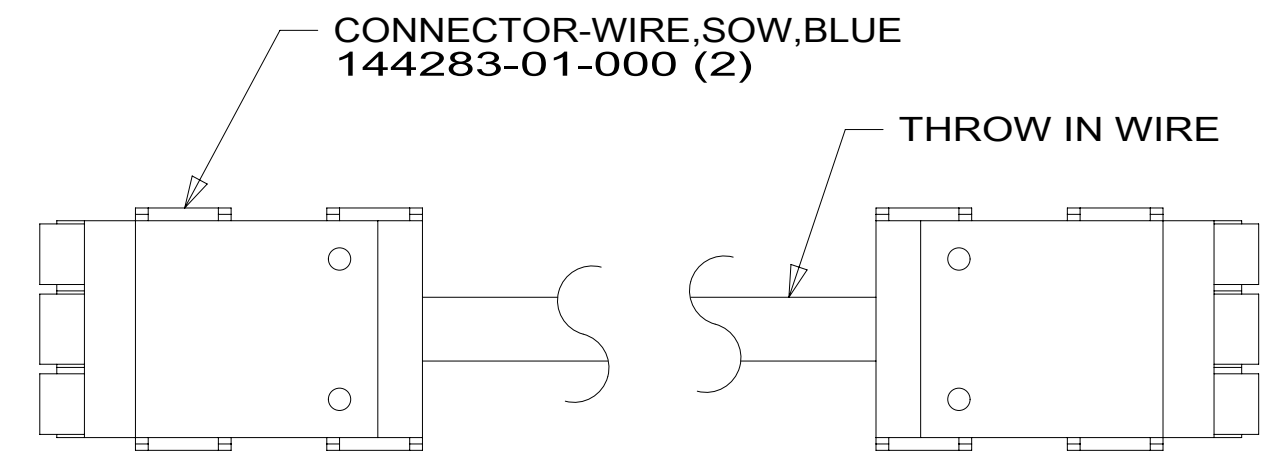
RED	1B1	136135-07-033	
	265	136136-07-033	
YEL	1B1	136131-05-060	3
	265	136134-05-060	3
BRN	1B1	136131-03-120	3
	265	136134-03-120	3
BLU	1B1	136131-02-100	3
	265	136134-02-100	3
MAIN	1B1	136137-01-055	5
	265	136138-01-055	5
BLK	1B1	136135-06-080	3
	265	136136-06-080	3
GRN	1B1	136135-08-033	
	265	136136-08-033	
SLIDEOUT #1		136151-03-018	4
SLIDEOUT #2		136151-02-018	4
SLIDEOUT #3		136151-13-018	4
SLIDEOUT #4		136152-06-018	6
GROUND MAIN		178545-01-060	

292
292

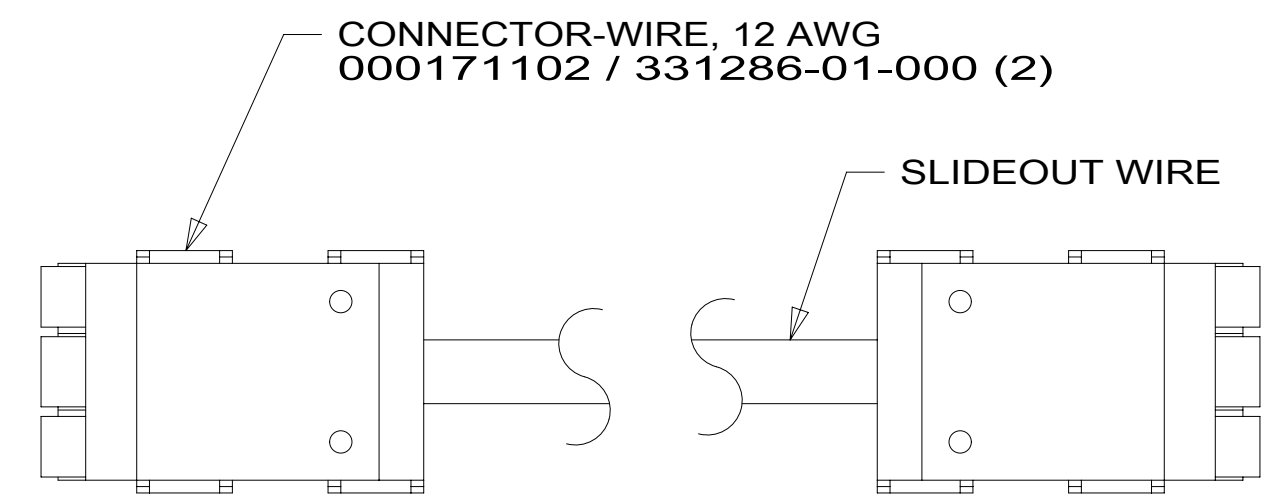
THROW IN WIRE #1	1B1	136131-03-035	3
	265	136134-03-035	3
THROW IN WIRE #2	1B1	136131-13-085	3
	265	136134-13-085	3
THROW IN WIRE #3	1B1	136131-03-067	3
	265	136134-03-067	3
THROW IN WIRE #5	1B1	136131-13-090	3
	265	136134-13-090	3
THROW IN WIRE #6	1B1	136131-02-015	3
	265	136134-02-015	3
THROW IN WIRE #7	1B1	136131-02-110	
	265	136134-02-110	
THROW IN WIRE #8	1B1	136131-06-038	3
	265	136134-06-038	3
THROW IN WIRE #9	1B1	136131-13-050	3
	265	136134-13-050	3



DETAIL FA



DETAIL FB



DETAIL FC

- 6 SEE DETAIL FC FOR CONNECTOR INSTALLATION.
- 5 ATTACH ONE END OF MAIN TO LOAD CENTER. COVER OTHER END OF MAIN CABLE ASM WITH 950 MM OF CONDUIT 091234-02-000. SECURE WITH TAPE 8363-01-000.
- 4 SEE DETAIL FB FOR CONNECTOR INSTALLATION.
- 3 SEE DETAIL FA FOR CONNECTOR INSTALLATION.

- 2. SECURE WIRES TO BACKSIDE OF LOAD CENTER WITH WIRE TIE 116673-01-000.
- 1. ALL GROUNDS WIRES TO BE COVERED WITH TUBING 8041-02-000.

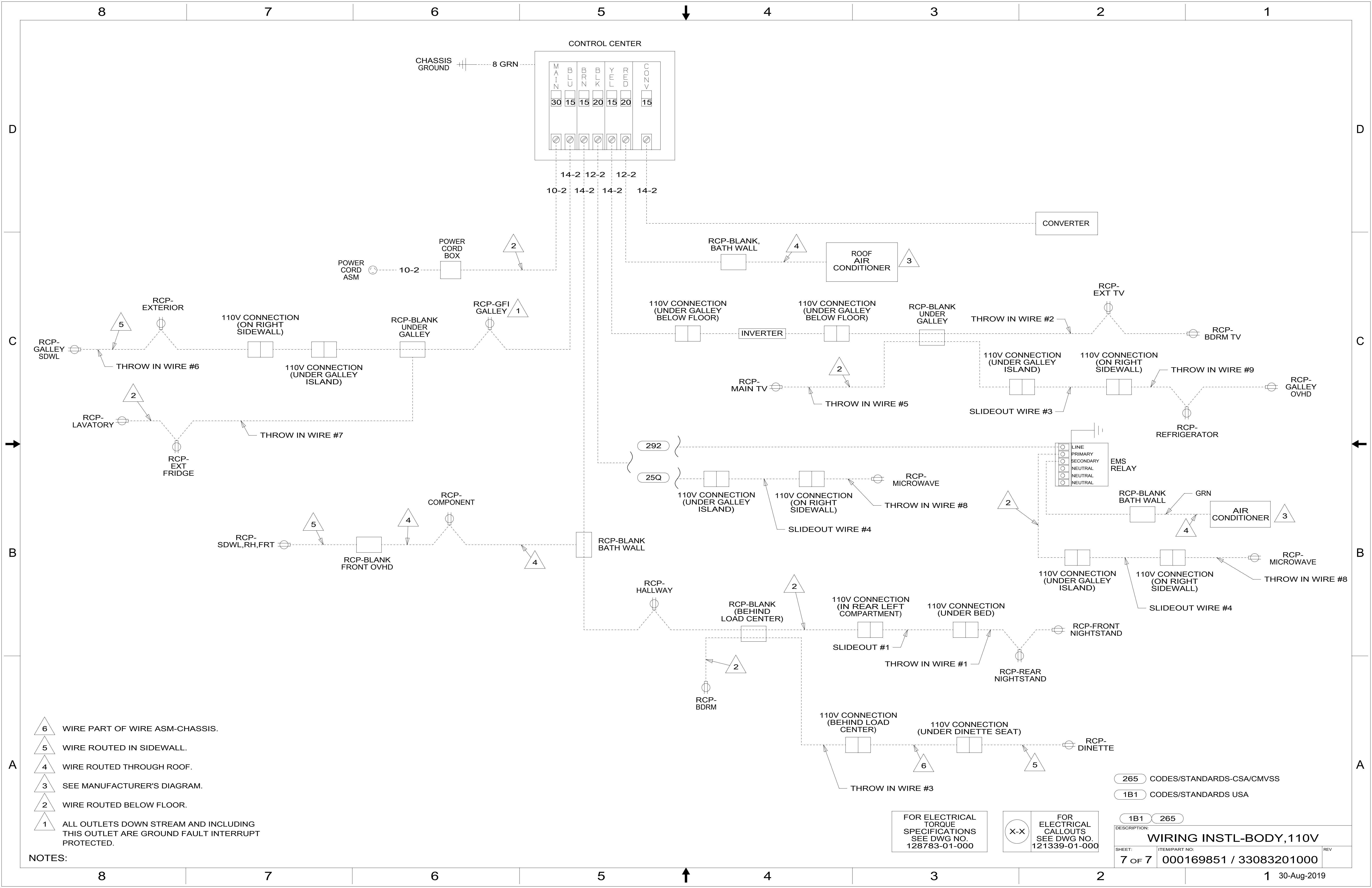
NOTES:

- 292 A/C-HIGH EFFICIENCY (2)
- 265 CODES/STANDARDS-CSA/CMVSS
- 1B1 CODES/STANDARDS USA

FOR ELECTRICAL TORQUE SPECIFICATIONS SEE DWG NO. 128783-01-000

FOR ELECTRICAL CALLOUTS SEE DWG NO. 121339-01-000

DESCRIPTION:	
1B1 265	
WIRING INSTL-BODY, 110V	
SHEET:	ITEM/PART NO. REV
6 OF 7	000169851 / 33083201000



- NOTES:
- △6 WIRE PART OF WIRE ASM-CHASSIS.
 - △5 WIRE ROUTED IN SIDEWALL.
 - △4 WIRE ROUTED THROUGH ROOF.
 - △3 SEE MANUFACTURER'S DIAGRAM.
 - △2 WIRE ROUTED BELOW FLOOR.
 - △1 ALL OUTLETS DOWN STREAM AND INCLUDING THIS OUTLET ARE GROUND FAULT INTERRUPT PROTECTED.

FOR ELECTRICAL TORQUE SPECIFICATIONS SEE DWG NO. 128783-01-000

FOR ELECTRICAL CALLOUTS SEE DWG NO. 121339-01-000

265	CODES/STANDARDS-CSA/CMVSS
1B1	CODES/STANDARDS USA
1B1	265
DESCRIPTION: WIRING INSTL-BODY, 110V	
SHEET: 7 OF 7	ITEM/PART NO: 000169851 / 33083201000
REV	