

- 6 MARK WIRES WITH WRAP OF RED TAPE.
- 5 MARK WIRES WITH WRAP OF ORG TAPE.
- 4 MARK WIRES WITH WRAP OF BLU TAPE.
- 3 SEE DETAIL EA FOR CONNECTION TO SENSOR PROBES.
- 2 WIRE PASSES THROUGH FLOOR IN THIS AREA.

1. AT MINIMUM ALL WIRES TO BE SUPPORTED AND SECURED PER CODE REQUIREMENTS. USE CLAMP 10495 OR 10497 OR 083610 OR WIRE TIE 8343 OR 108046 AND SCREW G67-XX-XXX OR G56-XX-XXX AS APPROPRIATE FOR INSTALLATION.

NOTES:

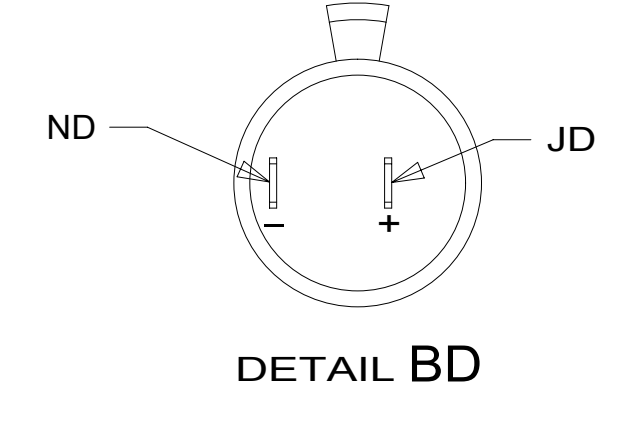
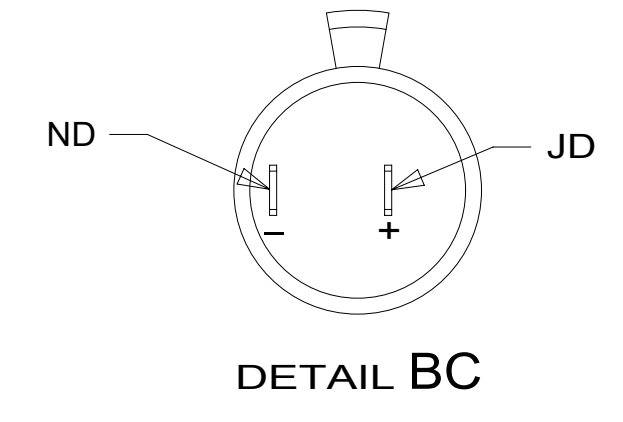
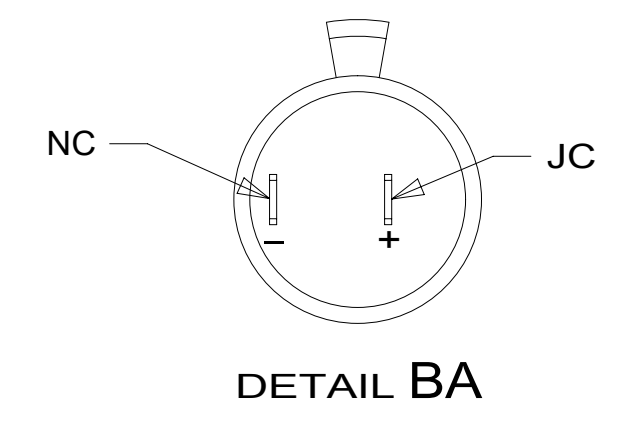
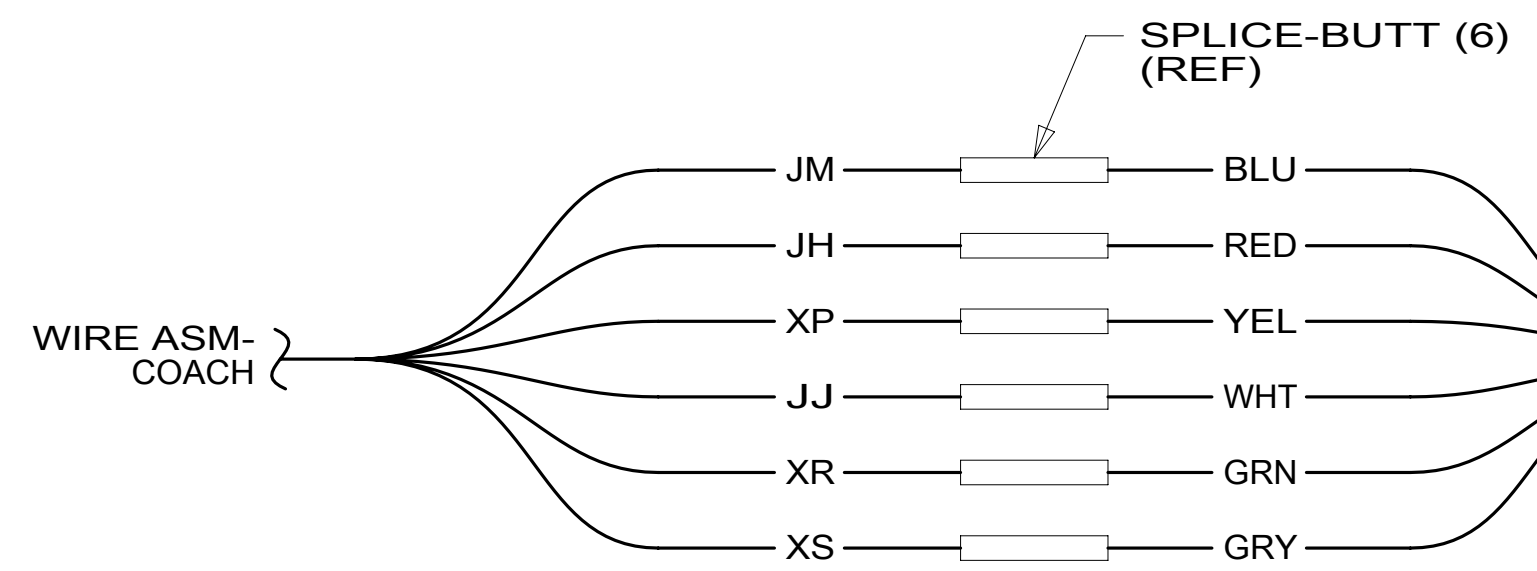
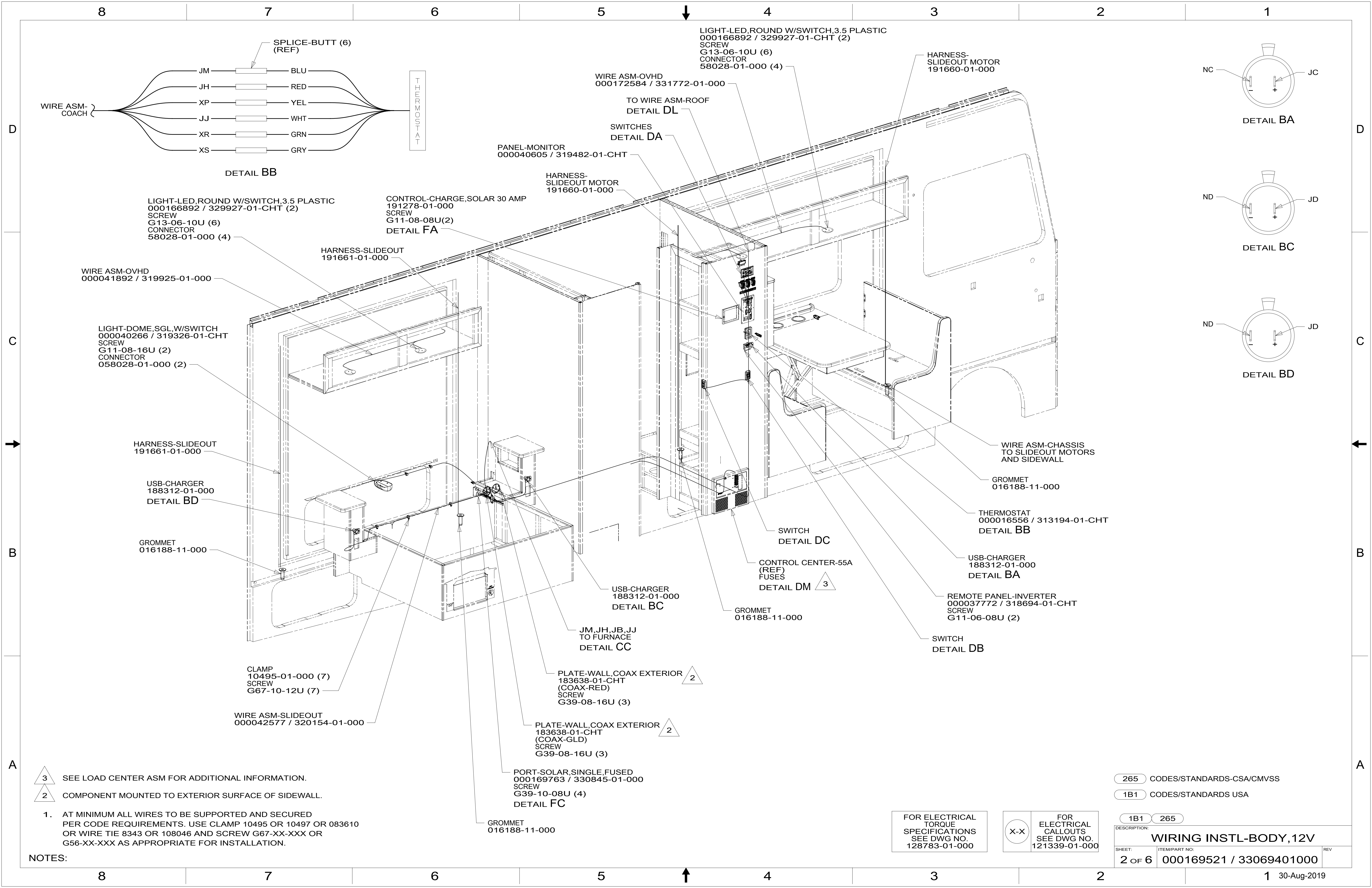
FOR ELECTRICAL TORQUE SPECIFICATIONS SEE DWG NO. 128783-01-000

FOR ELECTRICAL CALLOUTS SEE DWG NO. 121339-01-000

- 265 CODES/STANDARDS-CSA/CMVSS
- 1B1 CODES/STANDARDS USA
- 1B1 265

WINNEBAGO
COPYRIGHT 2016 WINNEBAGO INDUSTRIES, INC.

DSNR:	ALL DIMENSIONS ARE IN MILLIMETERS	
DFTFR:		
UNSPECIFIED TOLERANCES:	MATERIAL:	
WHOLE DIM (X) :	3	
ONE-PLACE (X.X) :	1.5	
TWO-PLACE (X.XX) :	0.50	
ANGLE :	1°	
REFER TO ES0018 FOR FASTENER TIGHTENING GUIDELINES	WEIGHT: (LBS)	FIRST USED:
		20 V28Y
WIRING INSTL-BODY, 12V		
SHEET: 1 OF 6	ITEM/PART NO: 000169521 / 33069401000	REV:
REF:		1 30-Aug-2019



NOTES:

3 SEE LOAD CENTER ASM FOR ADDITIONAL INFORMATION.

2 COMPONENT MOUNTED TO EXTERIOR SURFACE OF SIDEWALL.

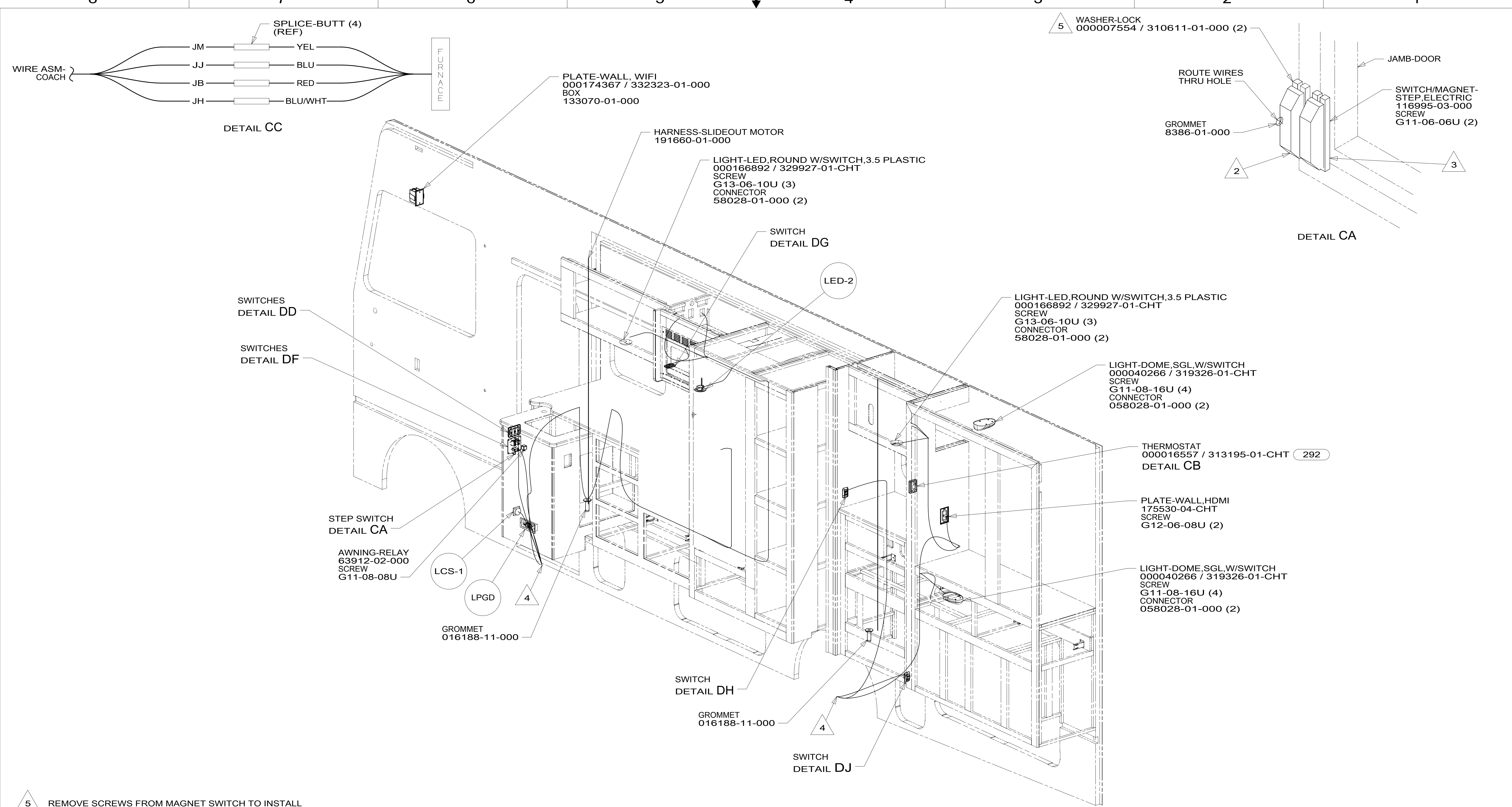
1. AT MINIMUM ALL WIRES TO BE SUPPORTED AND SECURED PER CODE REQUIREMENTS. USE CLAMP 10495 OR 10497 OR 083610 OR WIRE TIE 8343 OR 108046 AND SCREW G67-XX-XXX OR G56-XX-XXX AS APPROPRIATE FOR INSTALLATION.

FOR ELECTRICAL TORQUE SPECIFICATIONS SEE DWG NO. 128783-01-000

FOR ELECTRICAL CALLOUTS SEE DWG NO. 121339-01-000

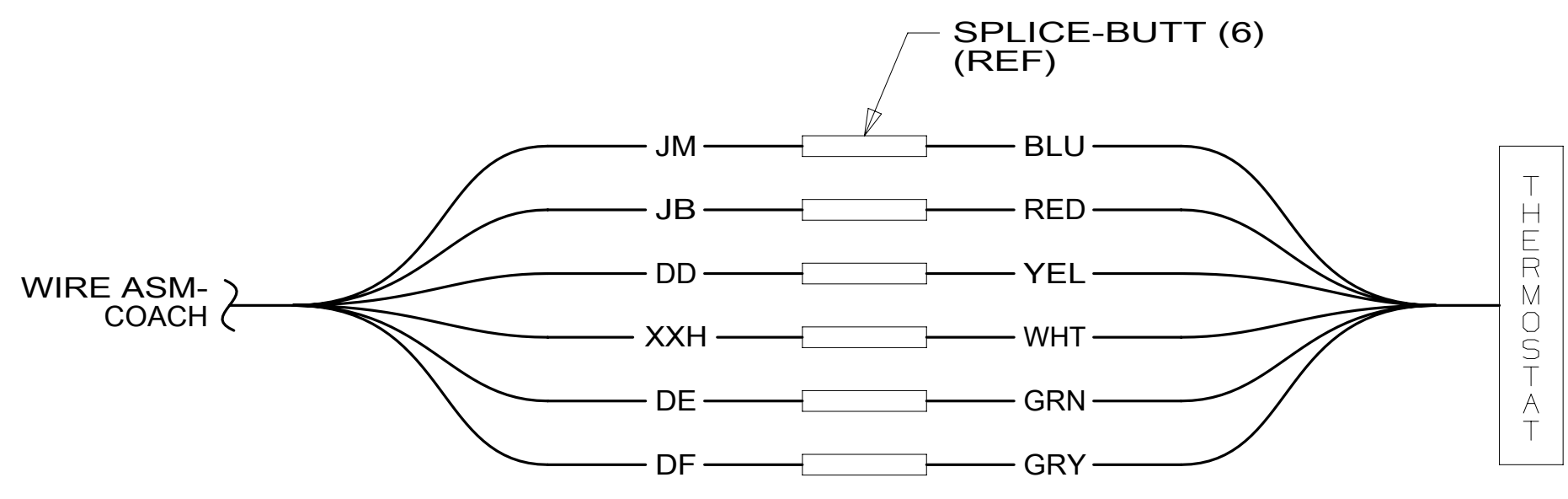
265 CODES/STANDARDS-CSA/CMVSS
 1B1 CODES/STANDARDS USA

DESCRIPTION:		1B1 265	
WIRING INSTL-BODY, 12V			
SHEET:	ITEM/PART NO.:	REV	
2 OF 6	000169521 / 33069401000		



- 5 REMOVE SCREWS FROM MAGNET SWITCH TO INSTALL LOCK WASHER AND RING TERMINALS.
- 4 WIRE PASSES THROUGH FLOOR IN THIS AREA.
- 3 MOUNT MAGNET TO SCREEN DOOR FRAME, MOUNT WITH MAGNET TOWARD SWITCH.
- 2 MOUNT SWITCH TO DOOR JAMB WITH TAPE 076322-21-000.

1. AT MINIMUM ALL WIRES TO BE SUPPORTED AND SECURED PER CODE REQUIREMENTS. USE CLAMP 10495 OR 10497 OR 083610 OR WIRE TIE 8343 OR 108046 AND SCREW G67-XX-XXX OR G56-XX-XXX AS APPROPRIATE FOR INSTALLATION.



- 292 A/C-HIGH EFFICIENCY (2)
- 265 CODES/STANDARDS-CSA/CMVSS
- 1B1 CODES/STANDARDS USA

FOR ELECTRICAL TORQUE SPECIFICATIONS SEE DWG NO. 128783-01-000

FOR ELECTRICAL CALLOUTS SEE DWG NO. 121339-01-000

DESCRIPTION:		1B1 265	
WIRING INSTL-BODY, 12V			
SHEET:	ITEM/PART NO.:	REV	
3 OF 6	000169521 / 33069401000		

LABEL-LOFT BED SWITCH
000042109 / 320011-01-CHT

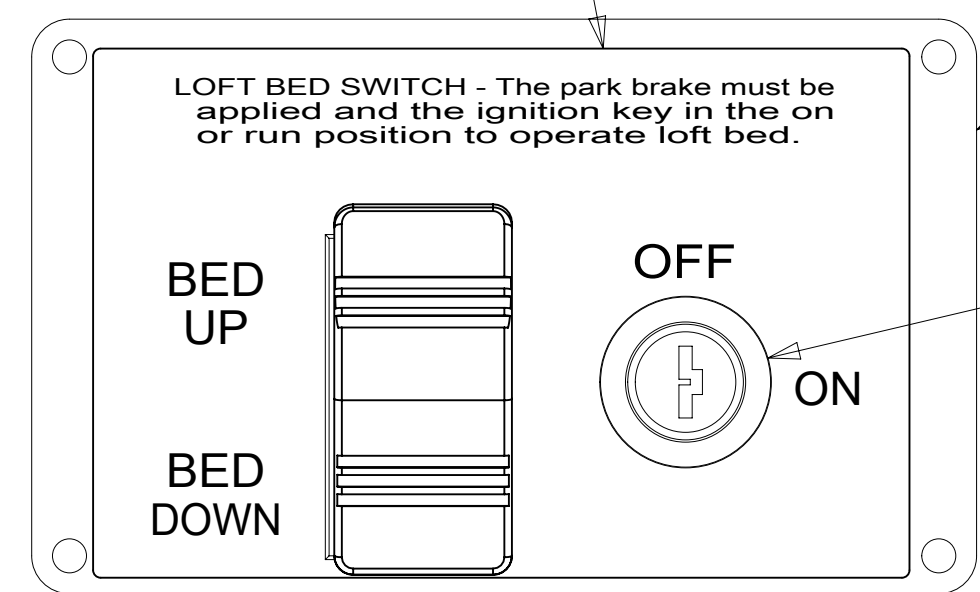


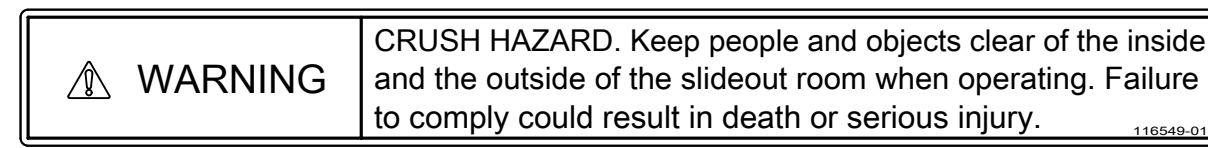
PLATE-KEY, LOFT BED
000041278 / 319697-01-CHT
SCREW
76790-05-000 (4)

SWITCH-KEY, SPST-ILLINOIS LCK
163097-01-000
(CIRCUITS: JD,JD-1)

SWITCH
108357-18-000
ACTUATOR
108356-31-CHT
CIRCUITS
DU,KE,DR,ABY,ABZ

SWITCH
108357-18-000
ACTUATOR
108356-31-CHT
CIRCUITS
HHH,KE,HHG,ACG,ACD

LABEL-WARNING, SLIDEOUT
116549-01-000



DETAIL DA

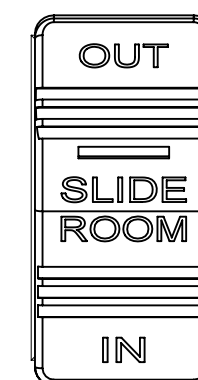
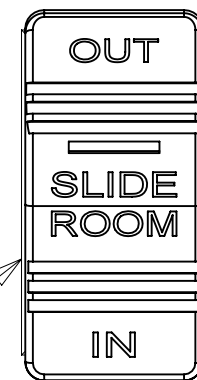
LABEL-SLIDEOUT, DRIVER,FRONT
163992-01-CHT

LABEL-SLIDEOUT, DRIVER,REAR
163992-02-CHT

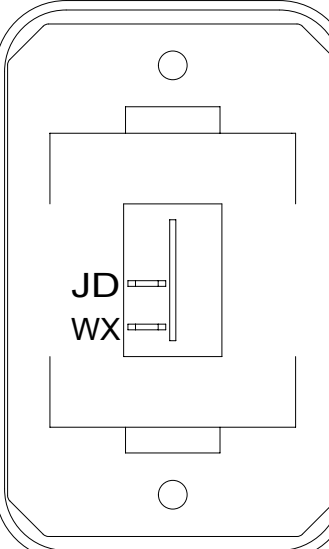
DRIVER'S SIDE REAR

DRIVER'S SIDE FRONT

PASSENGER'S SIDE FRONT

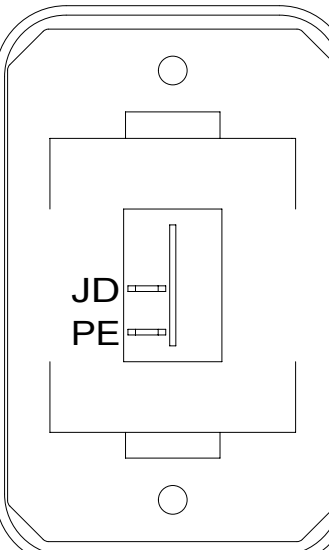


SWITCH
108357-18-000
ACTUATOR
108356-31-CHT
CIRCUITS
BBM,KE,BBN,ABW,ABX



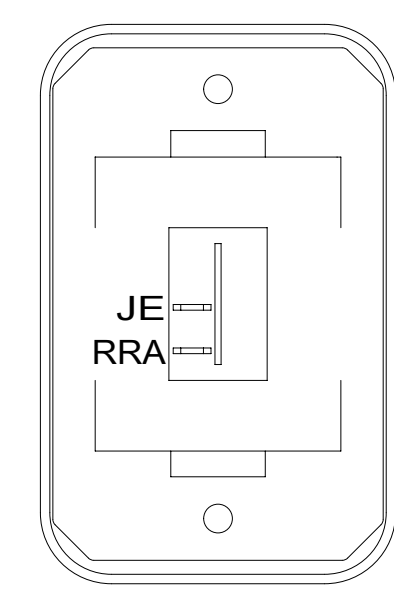
SWITCH-ROCKER
135740-01-CHT
SWITCH-BASE
135741-01-CHT
SWITCH-BEZEL
135742-01-CHT
SCREW
G11-08-08U (2)

DETAIL DB



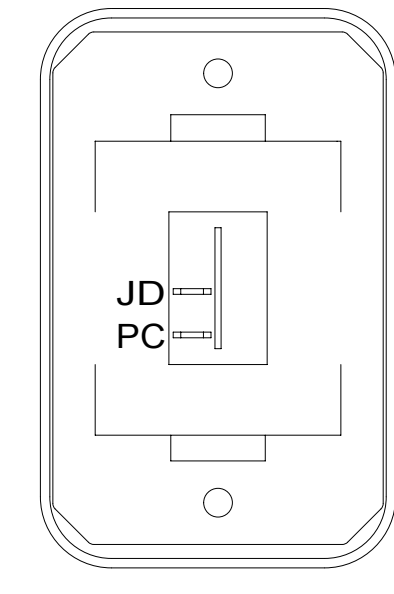
SWITCH-ROCKER
135740-01-CHT
SWITCH-BASE
135741-01-CHT
SWITCH-BEZEL
135742-01-CHT
SCREW
G11-08-08U (2)

DETAIL DC



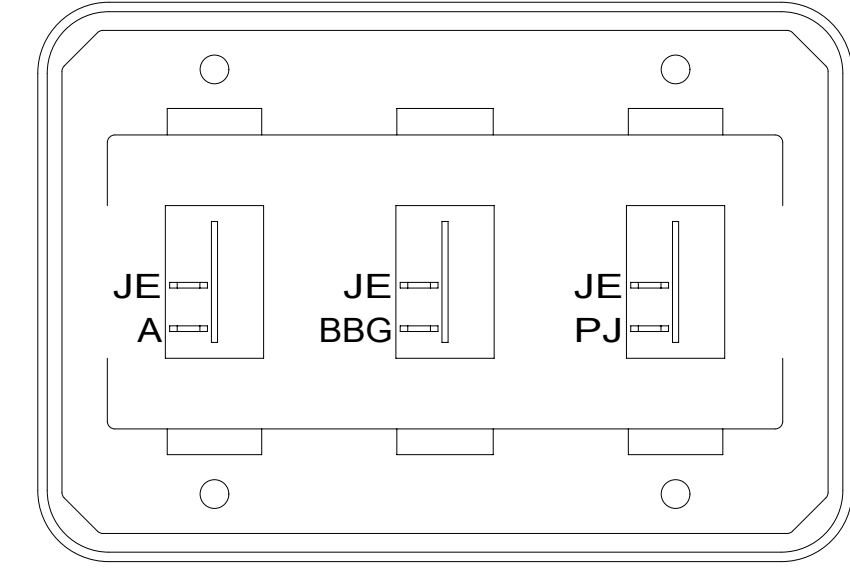
SWITCH-ROCKER
135740-01-CHT
SWITCH-BASE
135741-01-CHT
SWITCH-BEZEL
135742-01-CHT
SCREW
G11-08-08U (2)

DETAIL DG



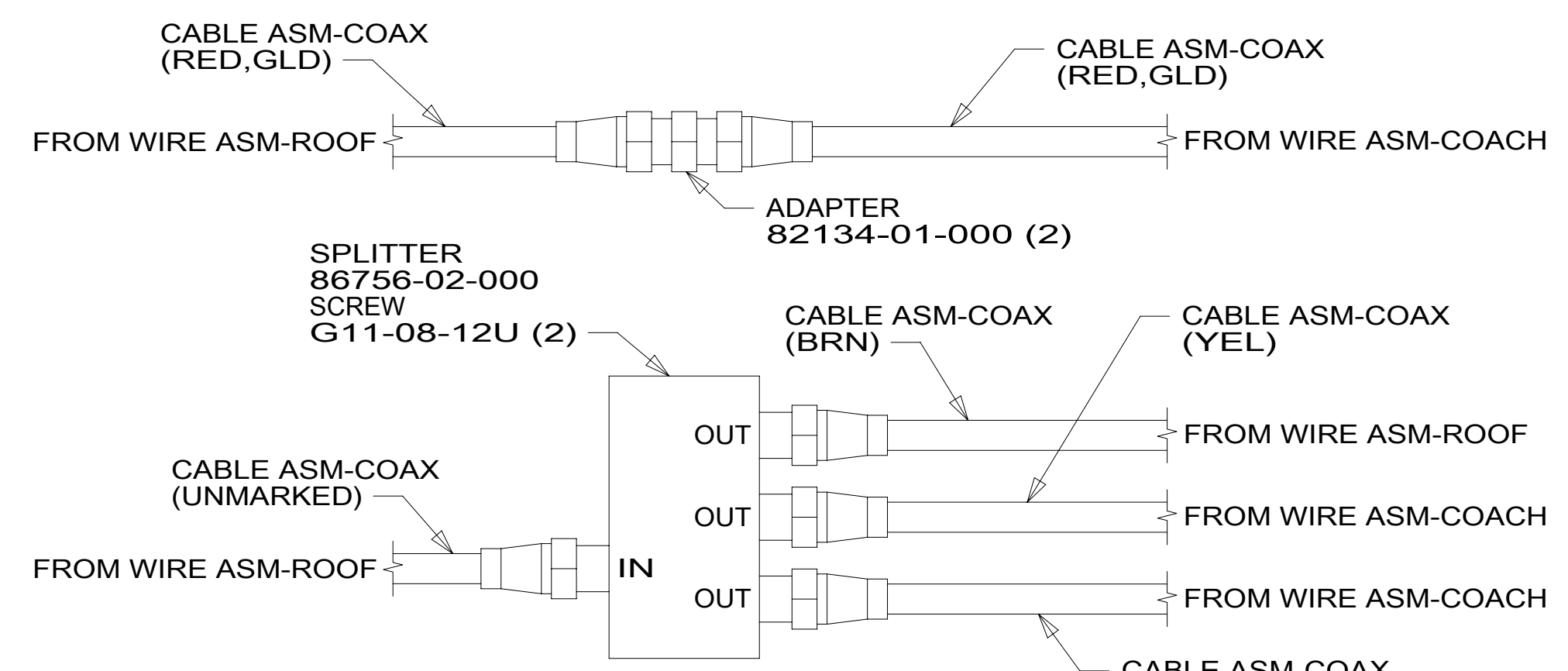
SWITCH-ROCKER
135740-01-CHT
SWITCH-BASE
135741-01-CHT
SWITCH-BEZEL
135742-01-CHT
SCREW
G11-08-08U (2)

DETAIL DH



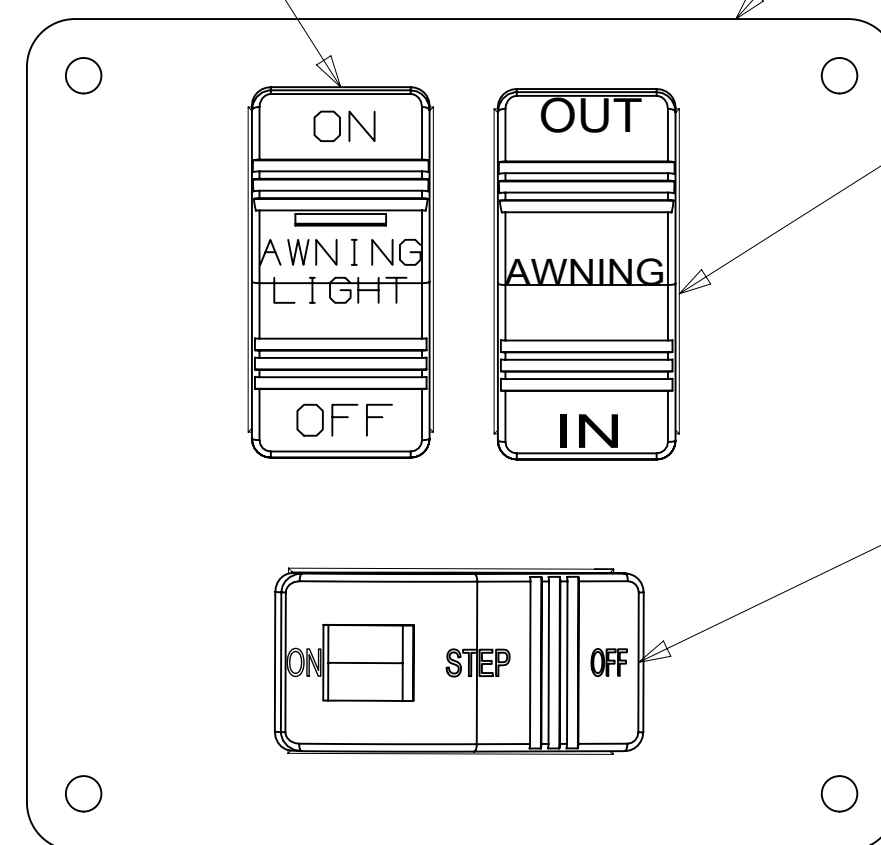
SWITCH-ROCKER
135740-01-CHT (3)
SWITCH-BASE
135741-03-CHT
SWITCH-BEZEL
135742-03-CHT
SCREW
G11-08-08U (4)

DETAIL DD



DETAIL DL

SWITCH-AWNING
108357-14-000
ACTUATOR-SWITCH
108356-28-CHT
CIRCUITS
SP,ZZL,WE

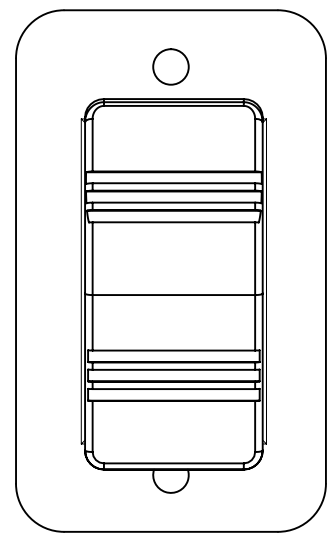


DETAIL DF 1

PLATE-SWITCH
158431-21-CHT
SCREW
G11-06-10U (4)

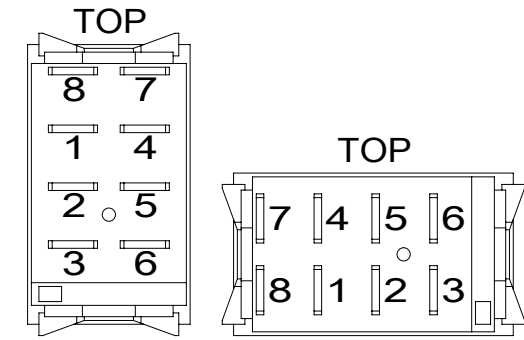
SWITCH-AWNING
108357-06-000
ACTUATOR-SWITCH
108356-12-CHT
CIRCUITS
FFD,FFR,FFE
FFE,JJR,FFD

SWITCH-STEP
108357-19-000
CIRCUITS ER,ES



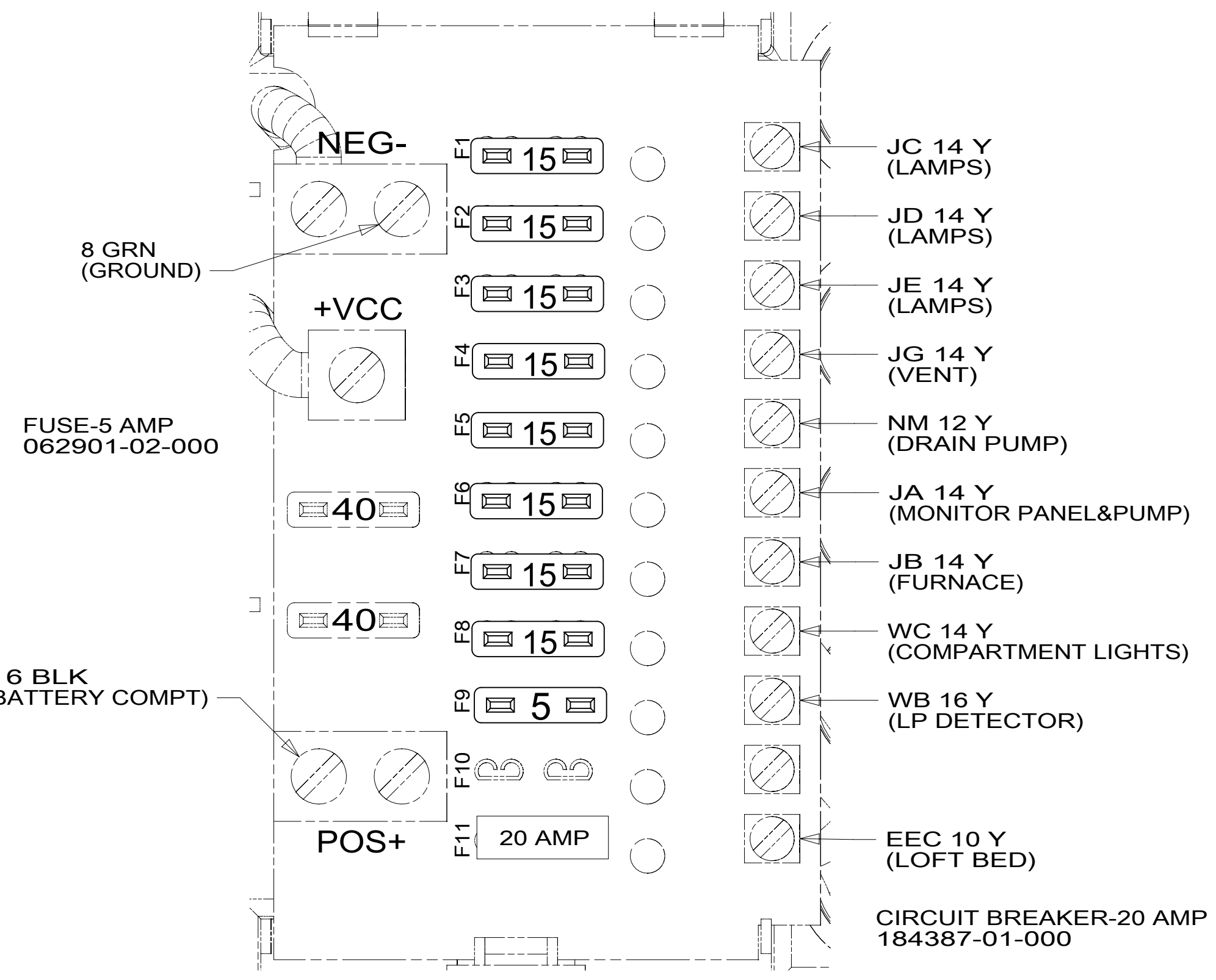
DETAIL DJ

SWITCH-ROCKER
108357-09-000
ACTUATOR
108356-27-CHT
PLATE
98351-07-CHT
SCREW
G11-06-10U (2)



DETAIL DK

FUSE-15 AMP
062901-05-000 (8)



DETAIL DM

265 CODES/STANDARDS-CSA/CMVSS

1B1 CODES/STANDARDS USA

1B1 265

FOR ELECTRICAL TORQUE SPECIFICATIONS SEE DWG NO. 128783-01-000

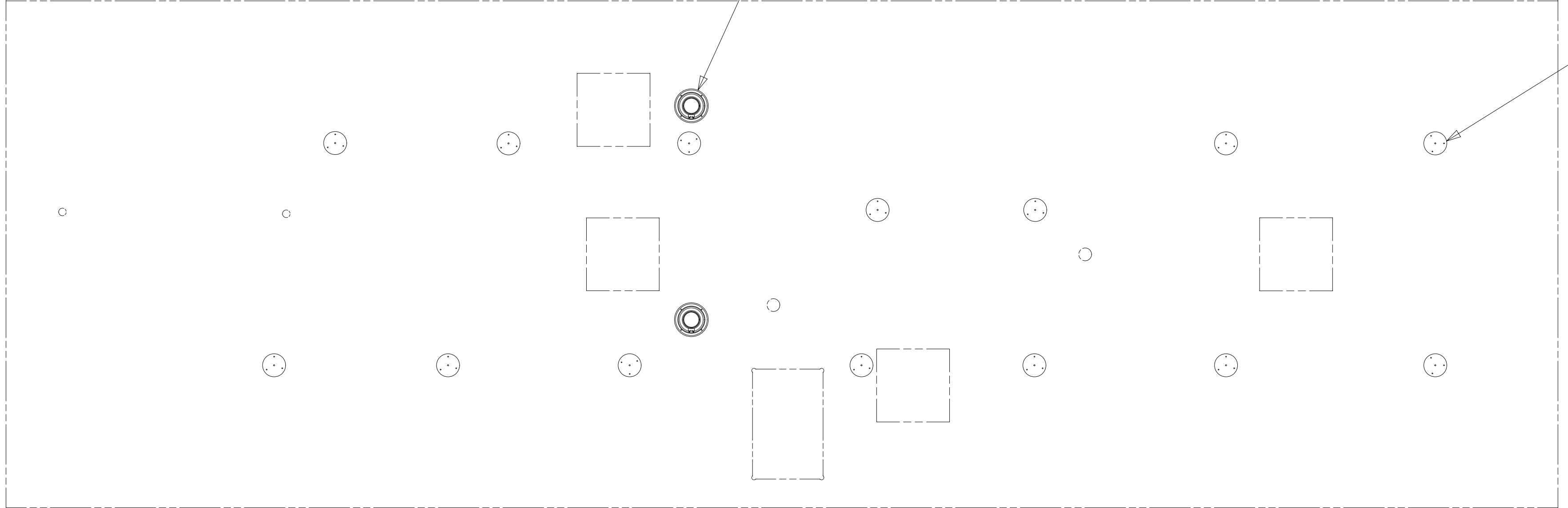
FOR ELECTRICAL CALLOUTS SEE DWG NO. 121339-01-000

DESCRIPTION:
WIRING INSTL-BODY, 12V

SHEET: 4 OF 6 ITEM/PART NO.: 000169521 / 33069401000 REV

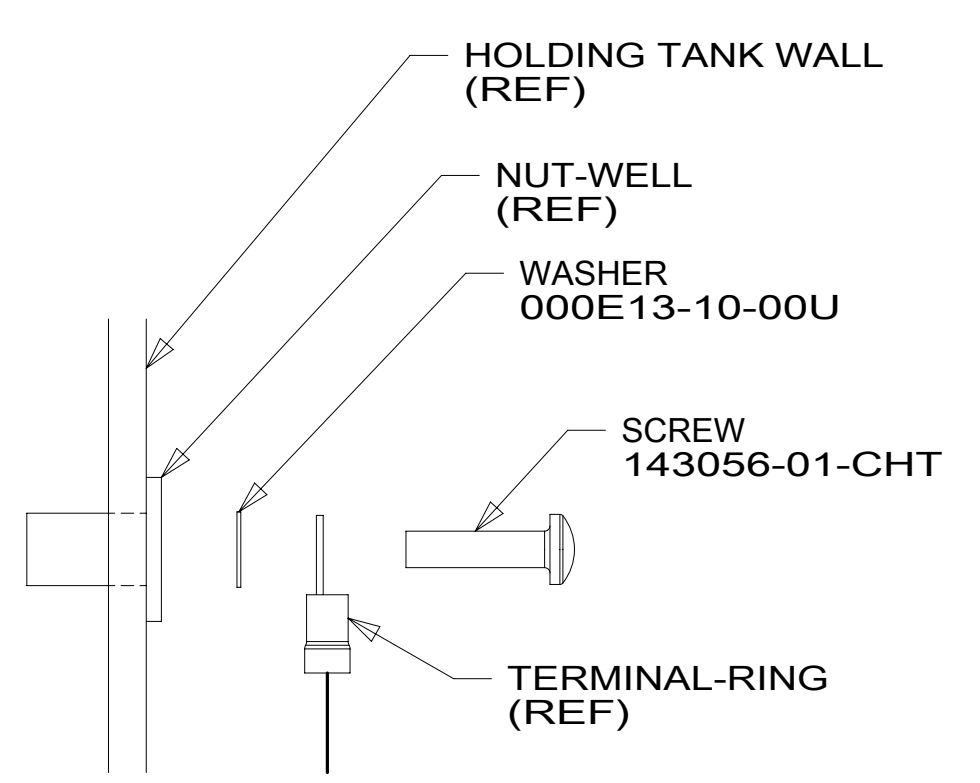
NOTES:
1 FOR SWITCH ORIENTATION SEE DETAIL DK.

8 7 6 5 4 3 2 1

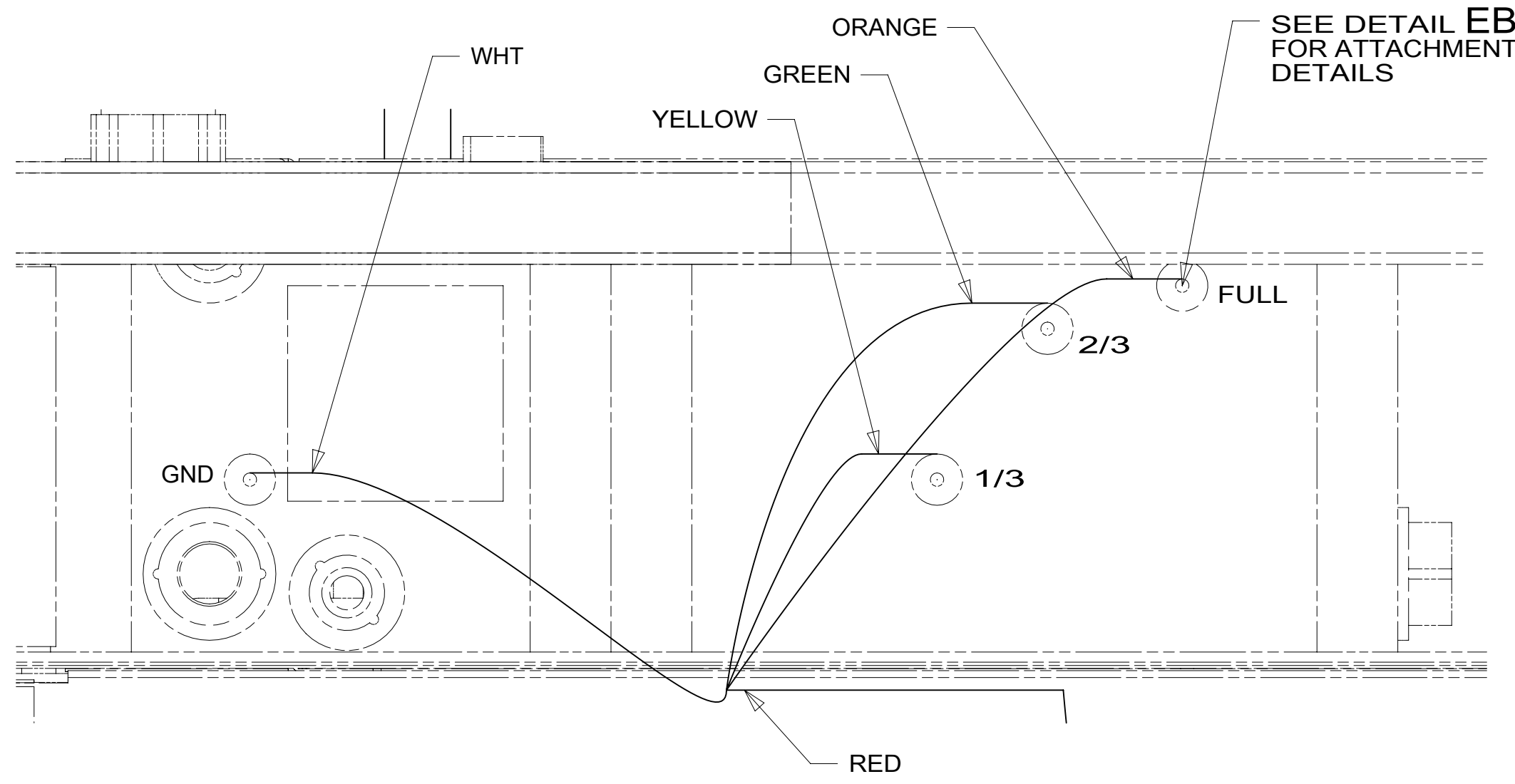


SPEAKER-ROUND,CEILING 5.25
180783-01-CHT (2)
SCREW
G11-08-12U (8)

LIGHT-LED,ROUND 4.5 PLASTIC
000166889 / 329926-01-CHT (14)
SCREW
G13-06-16U (42)
CONNECTOR
58028-01-000 (28)



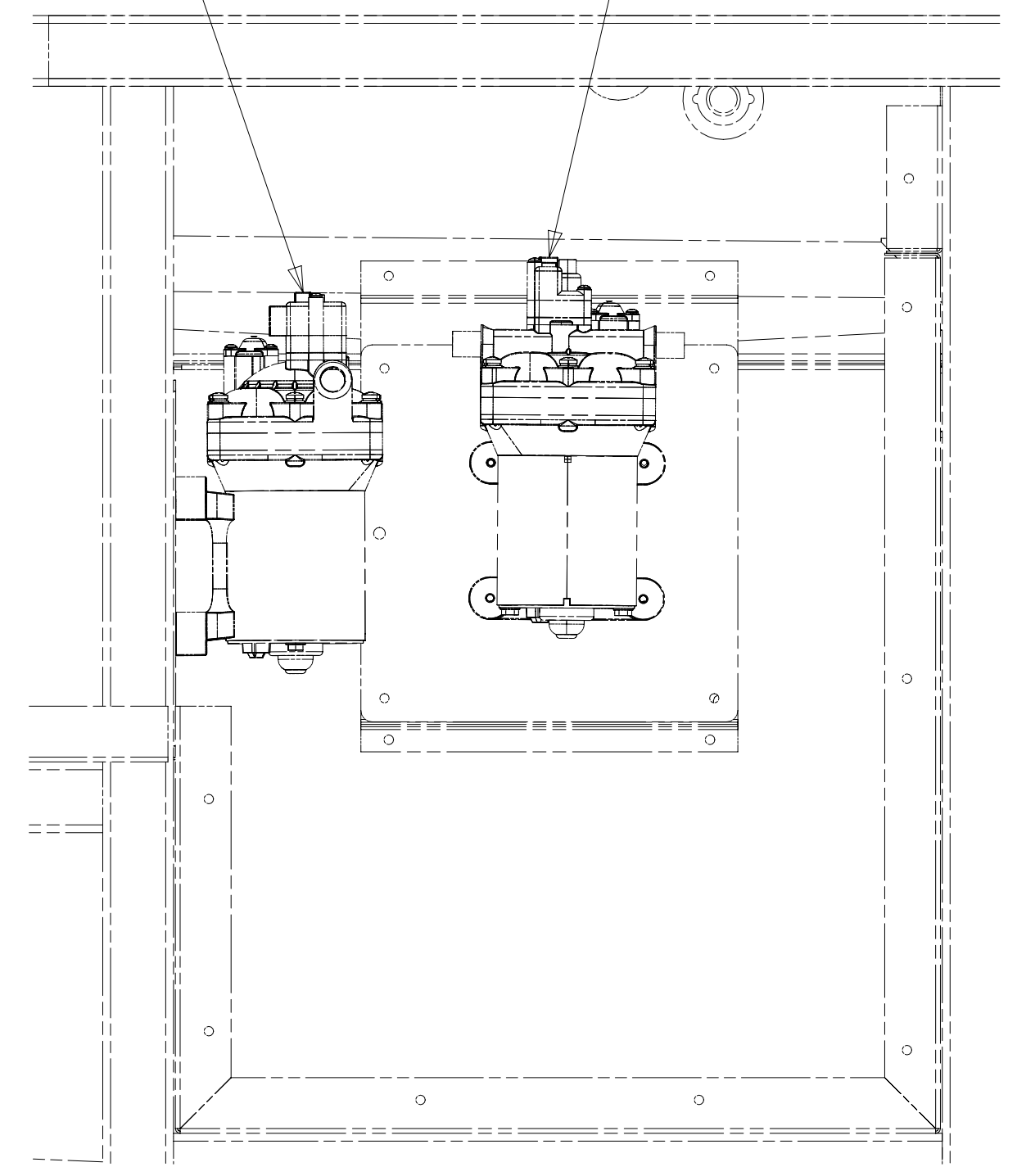
DETAIL EB 1



DETAIL EA

DRAINAGE PUMP-
PLUG IN WIRES
WITH GREEN TAPE-
CIRCUITS: DA,PM

WATER PUMP-
PLUG IN WIRES
WITH YELLOW TAPE-
CIRCUITS: JY,JS



DETAIL EC

1 TYPICAL WIRE ATTACHMENT AT ALL LEVEL PROBES (4 EACH)
FOR WATER, MAIN, AND AUX HOLDING TANKS.

NOTES:

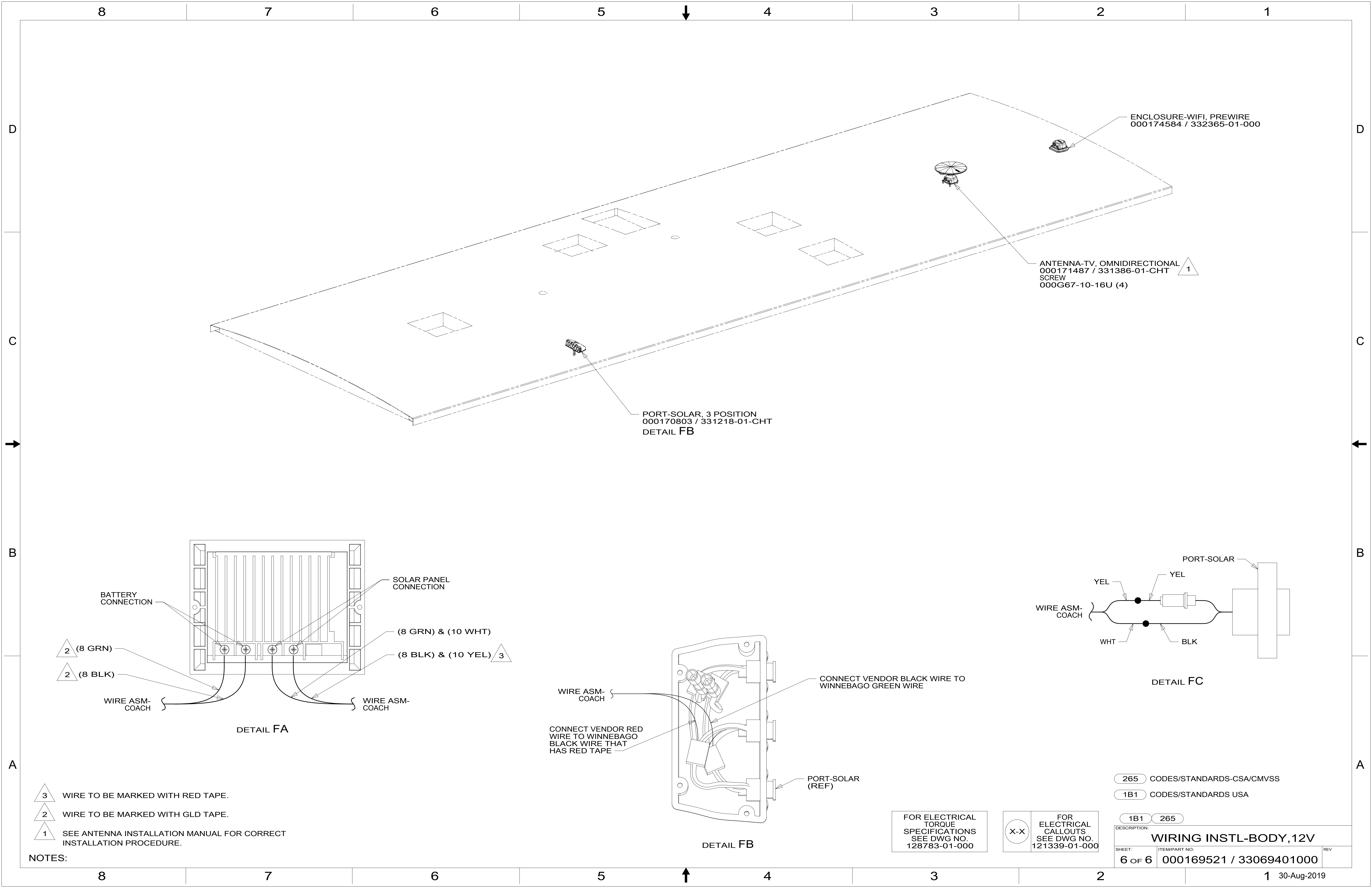
FOR ELECTRICAL
TORQUE
SPECIFICATIONS
SEE DWG NO.
128783-01-000

FOR
ELECTRICAL
CALLOUTS
SEE DWG NO.
121339-01-000

265 CODES/STANDARDS-CSA/CMVSS
1B1 CODES/STANDARDS USA

DESCRIPTION:	1B1 265	
WIRING INSTL-BODY, 12V		
SHEET:	ITEM/PART NO:	REV
5 OF 6	000169521 / 33069401000	

8 7 6 5 4 3 2 1 30-Aug-2019



ENCLOSURE-WIFI, PREWIRE
000174584 / 332365-01-000

ANTENNA-TV, OMNIDIRECTIONAL
000171487 / 331386-01-CHT
SCREW
000G67-10-16U (4) 1

PORT-SOLAR, 3 POSITION
000170803 / 331218-01-CHT
DETAIL FB

BATTERY CONNECTION

SOLAR PANEL CONNECTION

2 (8 GRN)

(8 GRN) & (10 WHT)

2 (8 BLK)

(8 BLK) & (10 YEL) 3

WIRE ASM-COACH

WIRE ASM-COACH

DETAIL FA

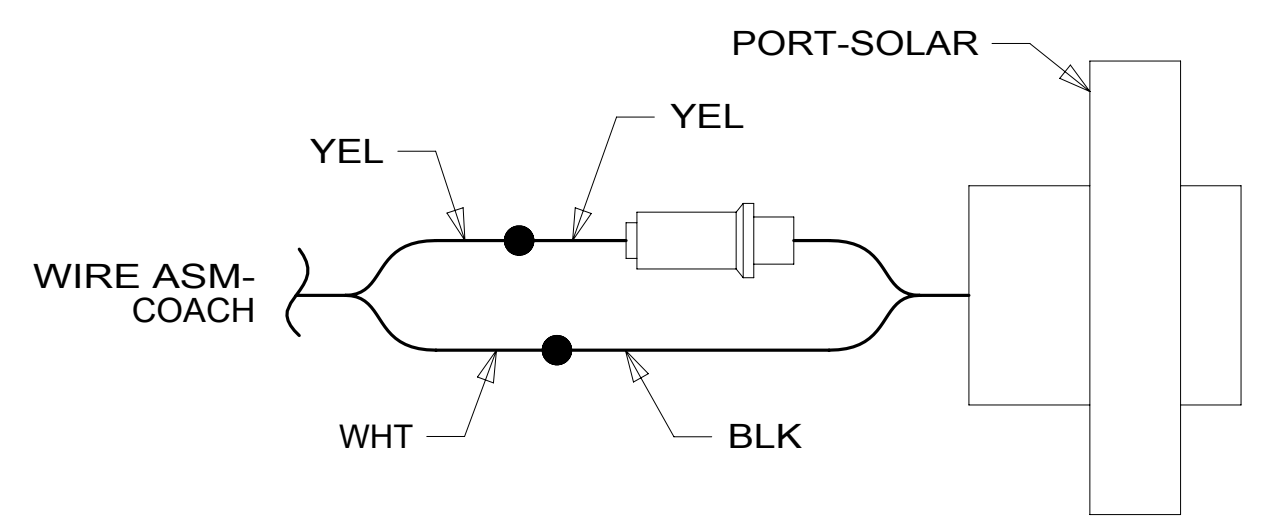
WIRE ASM-COACH

CONNECT VENDOR BLACK WIRE TO WINNEBAGO GREEN WIRE

CONNECT VENDOR RED WIRE TO WINNEBAGO BLACK WIRE THAT HAS RED TAPE

PORT-SOLAR (REF)

DETAIL FB



DETAIL FC

- NOTES:
- 3 WIRE TO BE MARKED WITH RED TAPE.
 - 2 WIRE TO BE MARKED WITH GLD TAPE.
 - 1 SEE ANTENNA INSTALLATION MANUAL FOR CORRECT INSTALLATION PROCEDURE.

FOR ELECTRICAL TORQUE SPECIFICATIONS SEE DWG NO. 128783-01-000

FOR ELECTRICAL CALLOUTS SEE DWG NO. 121339-01-000

- 265 CODES/STANDARDS-CSA/CMVSS
- 1B1 CODES/STANDARDS USA

1B1 265	
DESCRIPTION: WIRING INSTL-BODY, 12V	
SHEET:	ITEM/PART NO:
6 OF 6	000169521 / 33069401000
REV	REV