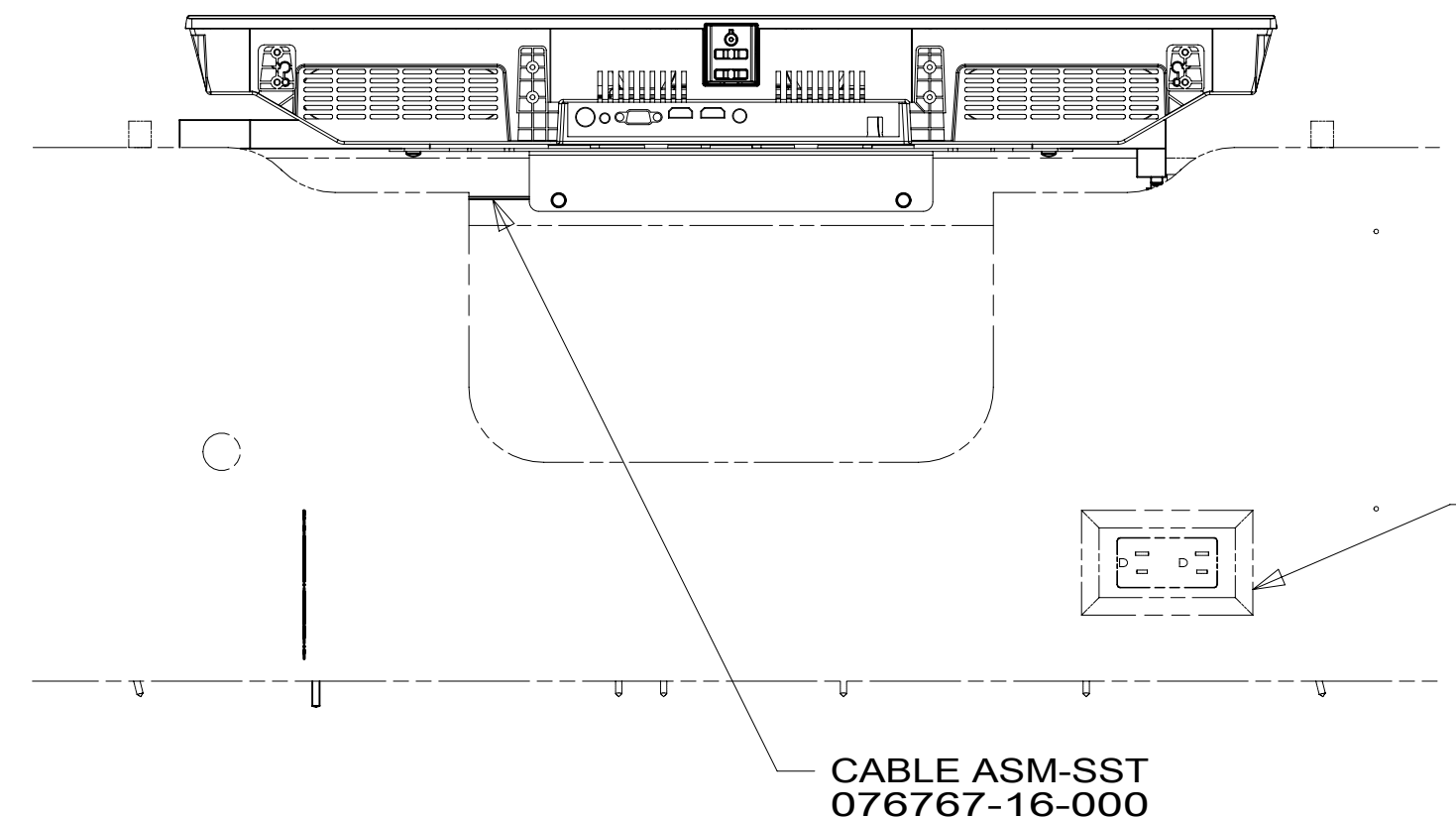


- 3 PREP SURFACE WITH 087211-01-000.
- 2 SEE WIRING INSTL-BODY, 110V FOR ADDITIONAL INFORMATION.
- 1 SEE WIRING INSTL-BODY, 12V FOR ADDITIONAL INFORMATION.

NOTES:

FOR ELECTRICAL TORQUE SPECIFICATIONS SEE DWG NO. 128783-01-000

FOR ELECTRICAL CALLOUTS SEE DWG NO. 121339-01-000

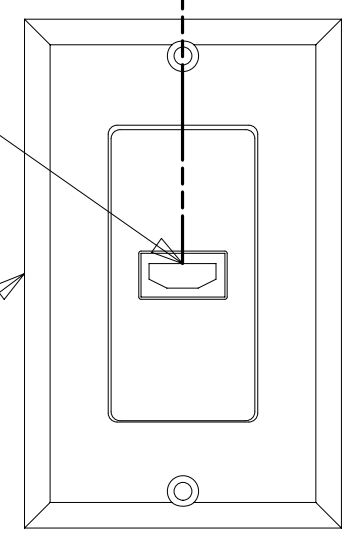
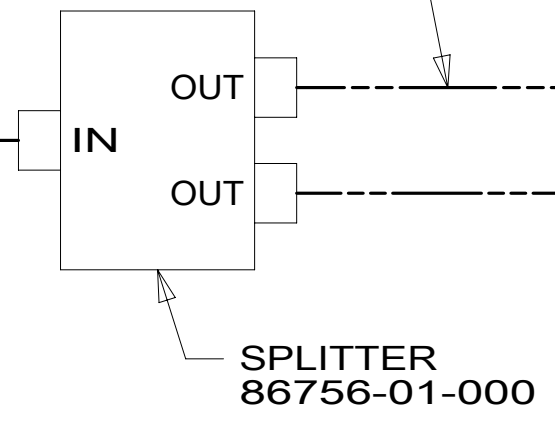
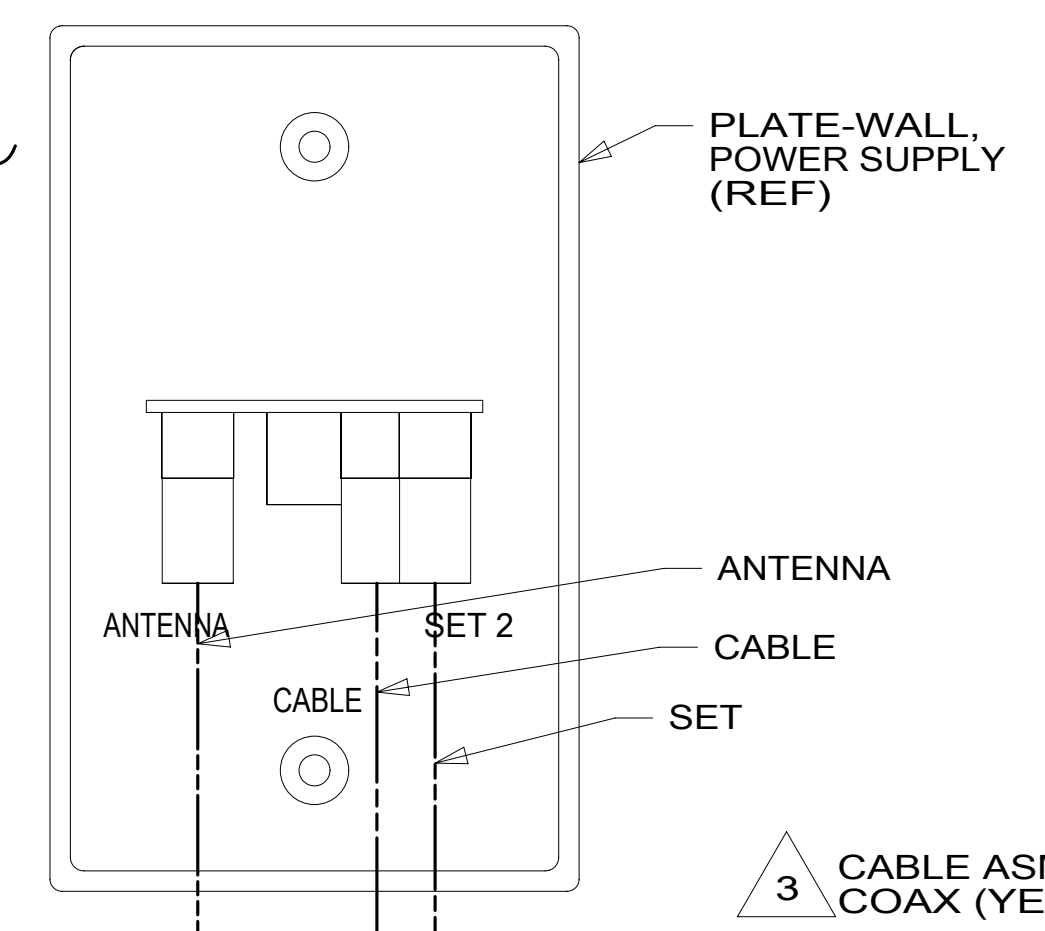
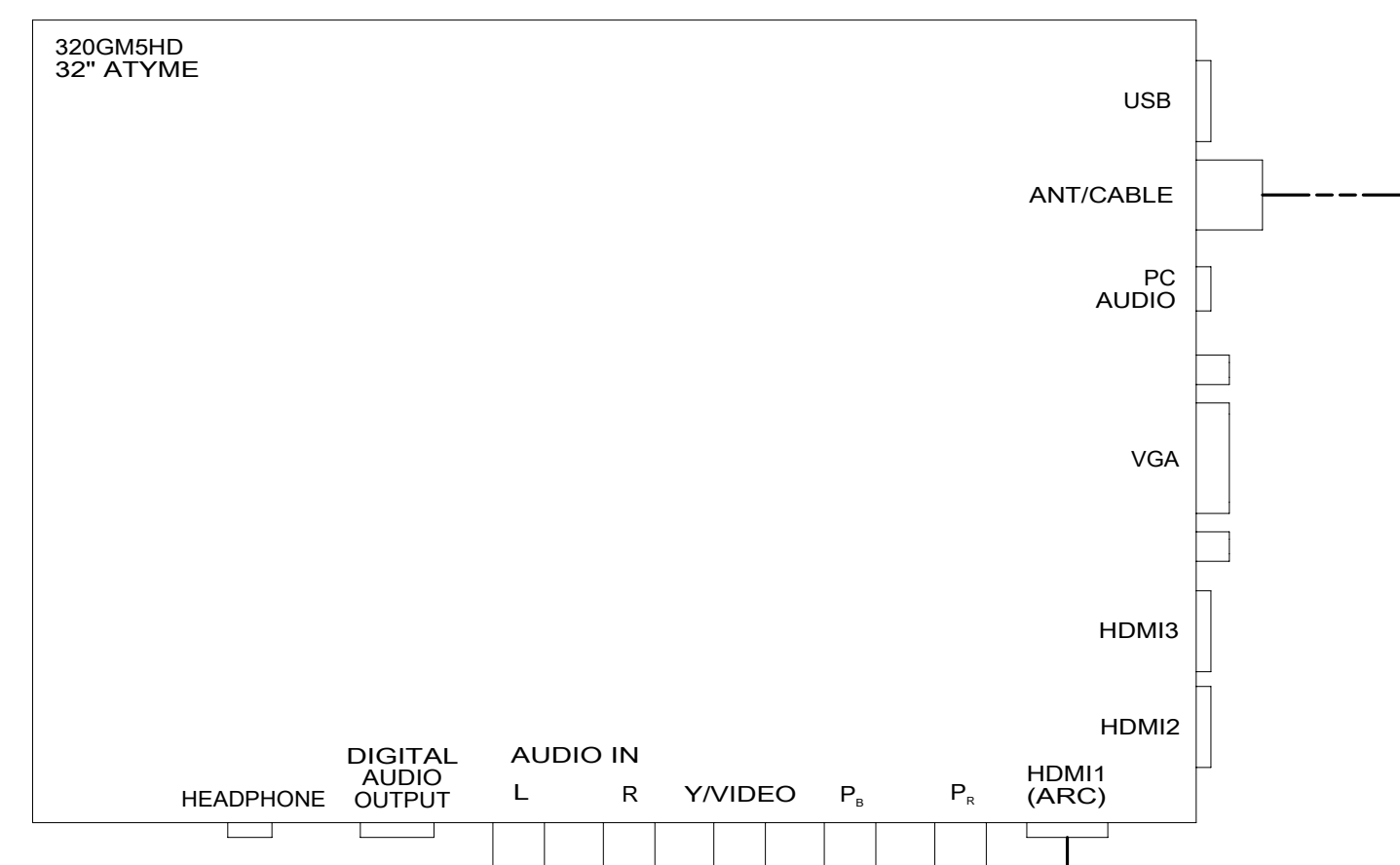
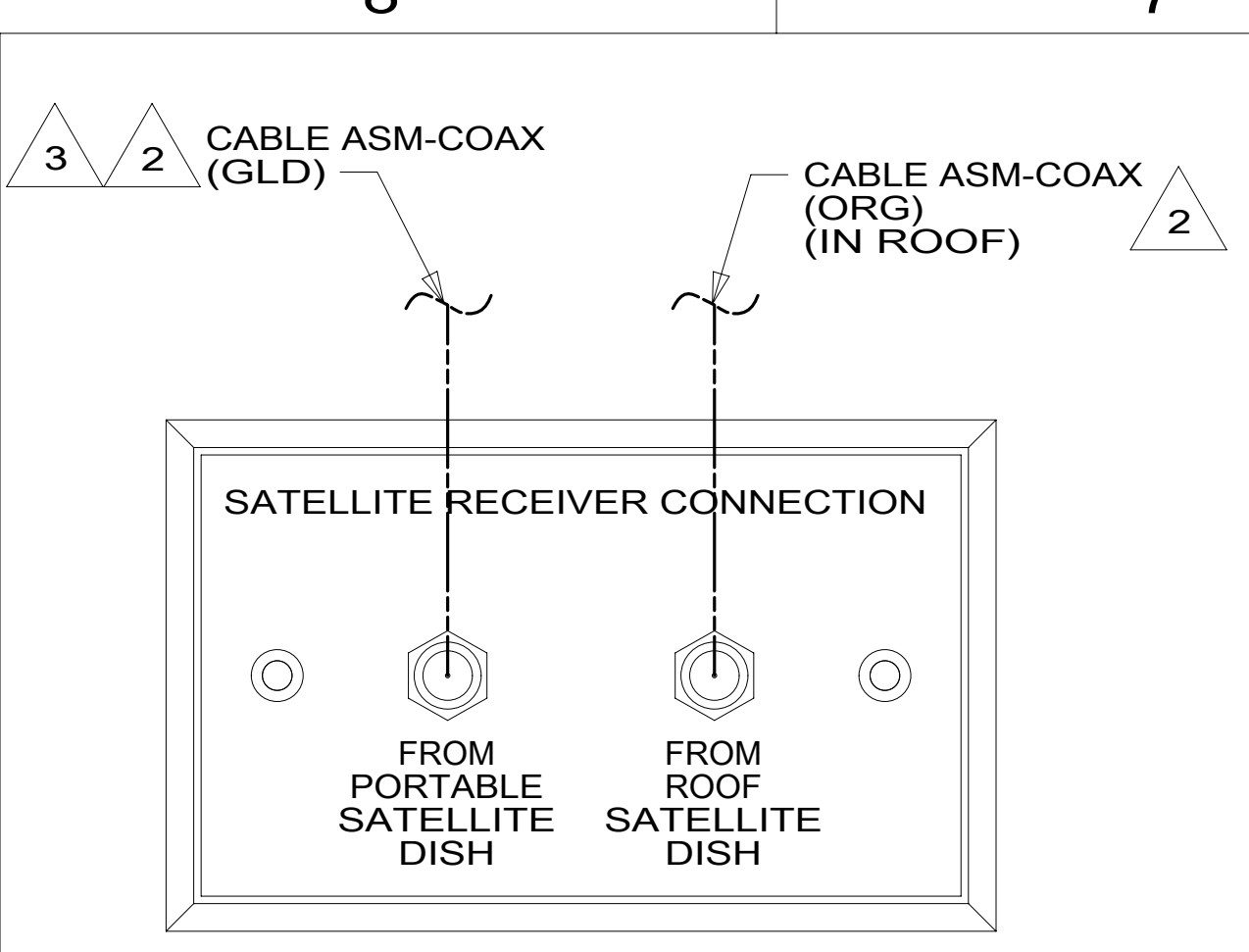
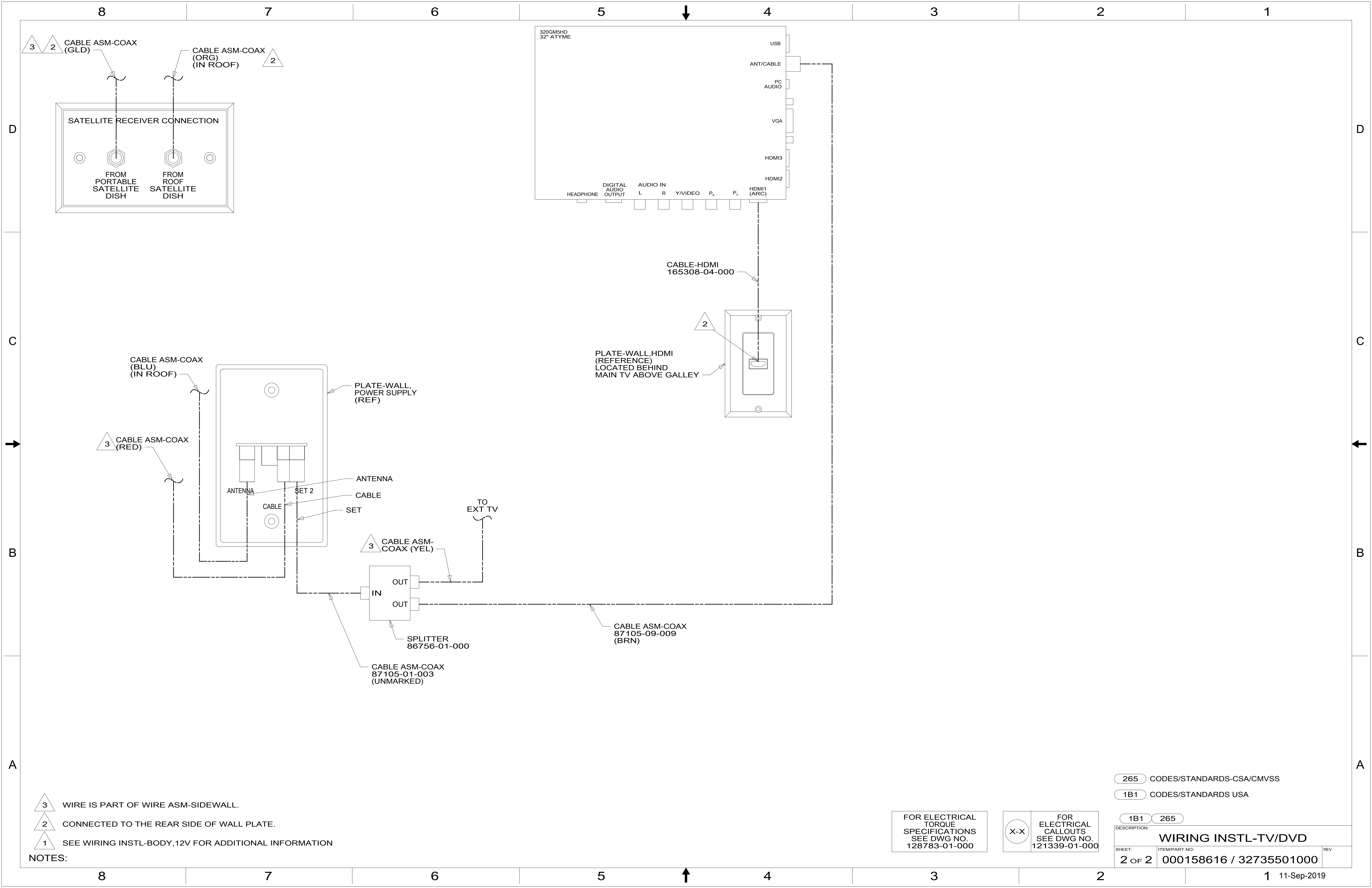


VIEW AA

- 265 CODES/STANDARDS-CSA/CMVSS
- 1B1 CODES/STANDARDS USA
- 1B1 265



DSNR:		ALL DIMENSIONS ARE IN MILLIMETERS	
DIFFR:		MATERIAL:	
UNSPECIFIED TOLERANCES:			
WHOLE DIM (X)	± 3		
ONE-PLACE (X.X)	± 1.5		
TWO-PLACE (X.XX)	± 0.50		
ANGLE	± 1°		
REFER TO ES0018 FOR FASTENER TIGHTENING GUIDELINES		WEIGHT: (LBS)	FIRST USED:
			20 524D
DESCRIPTION:			
WIRING INSTL-TV/DVD			
SHEET:	ITEM/PART NO.:	REV	
1 OF 2	000158616 / 32735501000		



- NOTES:**
- 3 WIRE IS PART OF WIRE ASM-SIDEWALL.
 - 2 CONNECTED TO THE REAR SIDE OF WALL PLATE.
 - 1 SEE WIRING INSTL-BODY, 12V FOR ADDITIONAL INFORMATION

265 CODES/STANDARDS-CSA/CMVSS
1B1 CODES/STANDARDS USA

FOR ELECTRICAL TORQUE SPECIFICATIONS SEE DWG NO. 128783-01-000

FOR ELECTRICAL CALLOUTS SEE DWG NO. 121339-01-000

DESCRIPTION:		1B1 265
WIRING INSTL-TV/DVD		
SHEET:	ITEM/PART NO.:	REV
2 OF 2	000158616 / 32735501000	