

8 7 6 5 4 3 2 1

D
C
B
A

LAMP-MARKER,
W RED LENS,BLK
193802-04-000
SCREW
G11-08-12U (2)

LAMP ASM-PORCH
184120-01-CHT
SCREW
G68-06-10U (2)
CONNECTOR
58028-01-000 (2)

BA

CA

LAMP-MARKER,
W RED LENS,BLK
193802-04-000
SCREW
G11-08-12U (2)

- 265 CODES/STANDARDS-CSA/CMVSS
- 1B1 CODES/STANDARDS USA
- 1B1 265



DSNR:	ALL DIMENSIONS ARE IN MILLIMETERS	
DIFFR:		
UNSPECIFIED TOLERANCES:	MATERIAL:	
WHOLE DIM (X) :		
ONE-PLACE (X.X) :		
TWO-PLACE (X.XX) :		
ANGLE :		

REFER TO ES0018 FOR FASTENER TIGHTENING GUIDELINES

WEIGHT: (LBS)	FIRST USED:
	20 500-SER

DESCRIPTION:
WIRING INSTL-EXTERIOR LAMPS

SHEET:	ITEM/PART NO.:	REV:
1 OF 3	000158615 / 32735401000	

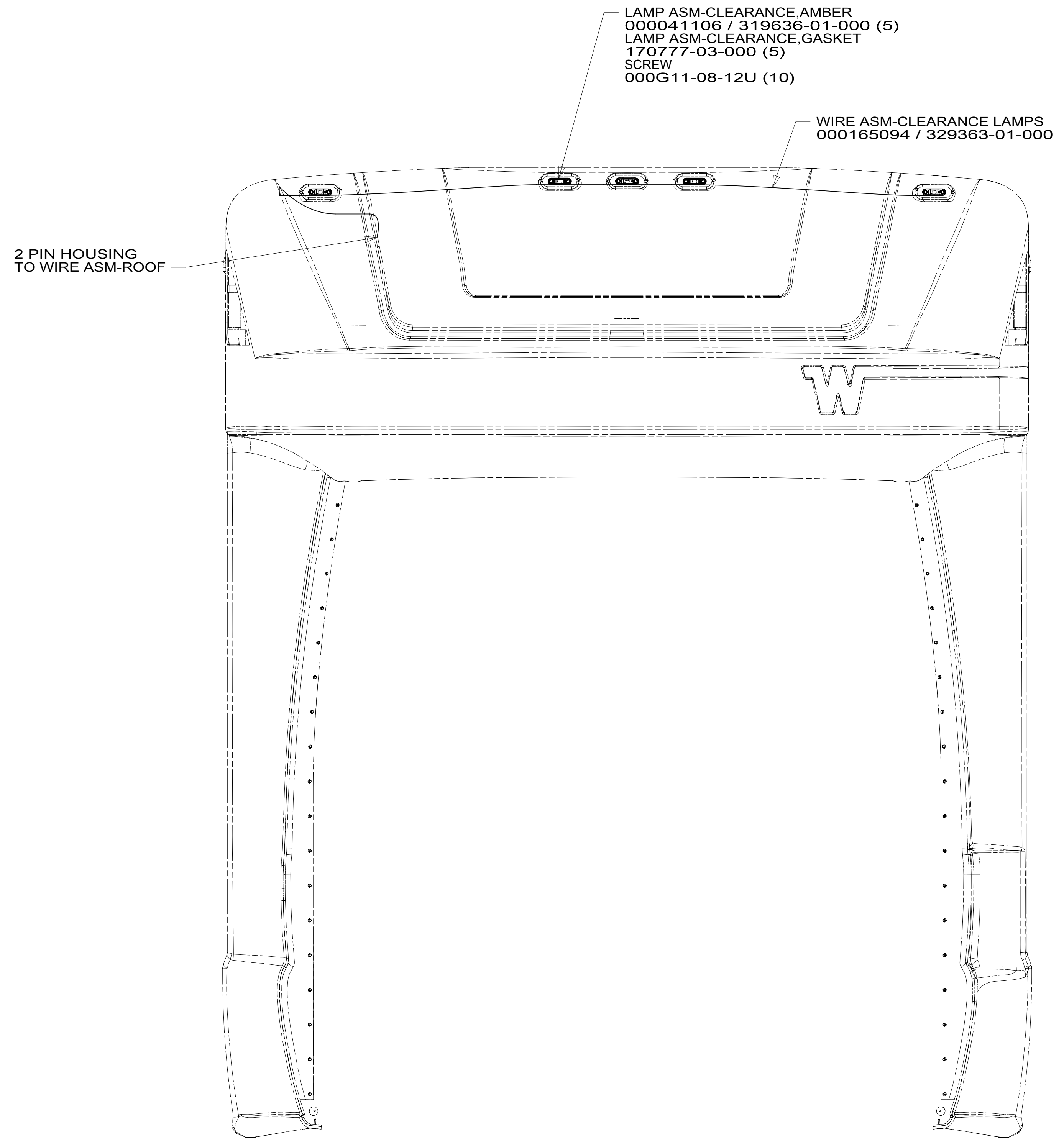
FOR ELECTRICAL TORQUE SPECIFICATIONS SEE DWG NO. 128783-01-000

FOR ELECTRICAL CALLOUTS SEE DWG NO. 121339-01-000

8 7 6 5 4 3 2 1

8 7 6 5 4 3 2 1

D
C
B
A



VIEW BA

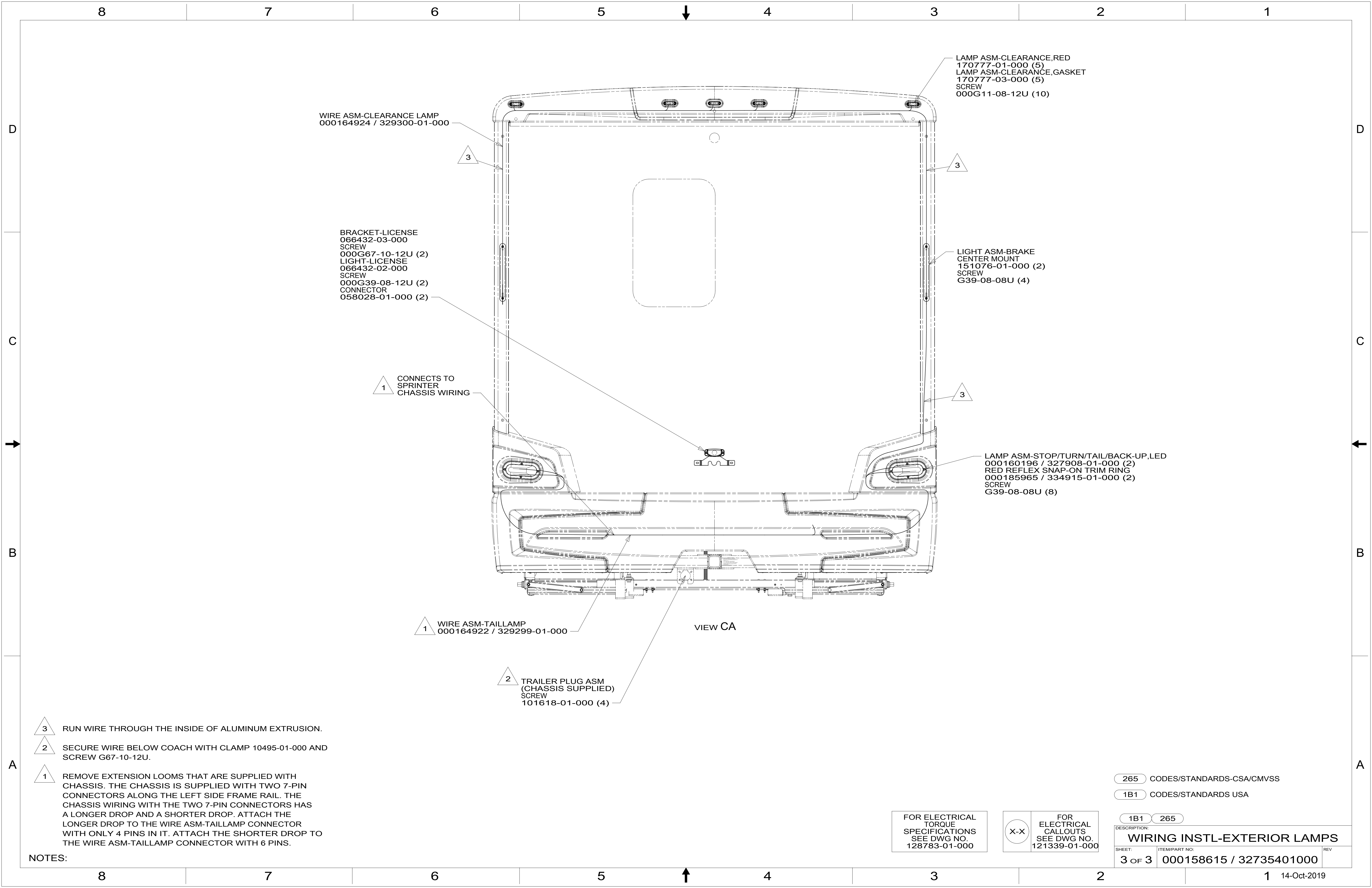
265 CODES/STANDARDS-CSA/CMVSS
 1B1 CODES/STANDARDS USA

FOR ELECTRICAL
 TORQUE
 SPECIFICATIONS
 SEE DWG NO.
 128783-01-000

FOR
 ELECTRICAL
 CALLOUTS
 SEE DWG NO.
 121339-01-000

DESCRIPTION:	
1B1 265	
WIRING INSTL-EXTERIOR LAMPS	
SHEET:	ITEM/PART NO:
2 OF 3	000158615 / 32735401000
REV	
1 14-Oct-2019	

8 7 6 5 4 3 2 1



WIRE ASM-CLEARANCE LAMP
000164924 / 329300-01-000

BRACKET-LICENSE
066432-03-000
SCREW
000G67-10-12U (2)
LIGHT-LICENSE
066432-02-000
SCREW
000G39-08-12U (2)
CONNECTOR
058028-01-000 (2)

LAMP ASM-CLEARANCE, RED
170777-01-000 (5)
LAMP ASM-CLEARANCE, GASKET
170777-03-000 (5)
SCREW
000G11-08-12U (10)

LIGHT ASM-BRAKE
CENTER MOUNT
151076-01-000 (2)
SCREW
G39-08-08U (4)

LAMP ASM-STOP/TURN/TAI/BACK-UP, LED
000160196 / 327908-01-000 (2)
RED REFLEX SNAP-ON TRIM RING
000185965 / 334915-01-000 (2)
SCREW
G39-08-08U (8)

1 CONNECTS TO
SPRINTER
CHASSIS WIRING

1 WIRE ASM-TAILLAMP
000164922 / 329299-01-000

2 TRAILER PLUG ASM
(CHASSIS SUPPLIED)
SCREW
101618-01-000 (4)

VIEW CA

3 RUN WIRE THROUGH THE INSIDE OF ALUMINUM EXTRUSION.

2 SECURE WIRE BELOW COACH WITH CLAMP 10495-01-000 AND SCREW G67-10-12U.

1 REMOVE EXTENSION LOOMS THAT ARE SUPPLIED WITH CHASSIS. THE CHASSIS IS SUPPLIED WITH TWO 7-PIN CONNECTORS ALONG THE LEFT SIDE FRAME RAIL. THE CHASSIS WIRING WITH THE TWO 7-PIN CONNECTORS HAS A LONGER DROP AND A SHORTER DROP. ATTACH THE LONGER DROP TO THE WIRE ASM-TAILLAMP CONNECTOR WITH ONLY 4 PINS IN IT. ATTACH THE SHORTER DROP TO THE WIRE ASM-TAILLAMP CONNECTOR WITH 6 PINS.

NOTES:

265 CODES/STANDARDS-CSA/CMVSS

1B1 CODES/STANDARDS USA

1B1 265

FOR ELECTRICAL
TORQUE
SPECIFICATIONS
SEE DWG NO.
128783-01-000

FOR ELECTRICAL
CALLOUTS
SEE DWG NO.
121339-01-000

DESCRIPTION:
WIRING INSTL-EXTERIOR LAMPS

SHEET: 3 OF 3 ITEM/PART NO: 000158615 / 32735401000 REV

1 14-Oct-2019