

- NOTES:**
- 8** REMOVE PLASTIC TRAY AND DISCARD.
  - 7** 12 PIN HOUSING TO BE ROUTED ABOVE FLOOR TO CONTROL PANEL.
  - 6** 10 PIN HOUSING CONNECTS TO GENERATOR.
  - 5** CABLE SUPPLIED WITH DIESEL GENERATOR.
  - 4** INSTALL NUT SO THAT IT IS FLUSH WITH TOP OF EXTENDER-SHAFT.
  - 3** CUT WIRE TIE AROUND SPRINTER SEAL, ROUTE THE CHASSIS WIRING THROUGH HOLE AND WIRE TIE SEAL WITH WIRE TIE 8343-04-000.
  - 2.** SECURE CONDUIT 41953, TAB AS REQUIRED, OVER ALL WIRES IN CONTACT WITH SHARP EDGES.
  - 1** SEE WIRING INSTL-BODY,12V FOR ADDITIONAL INFORMATION.

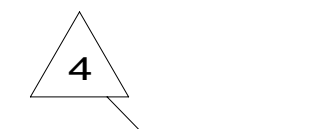
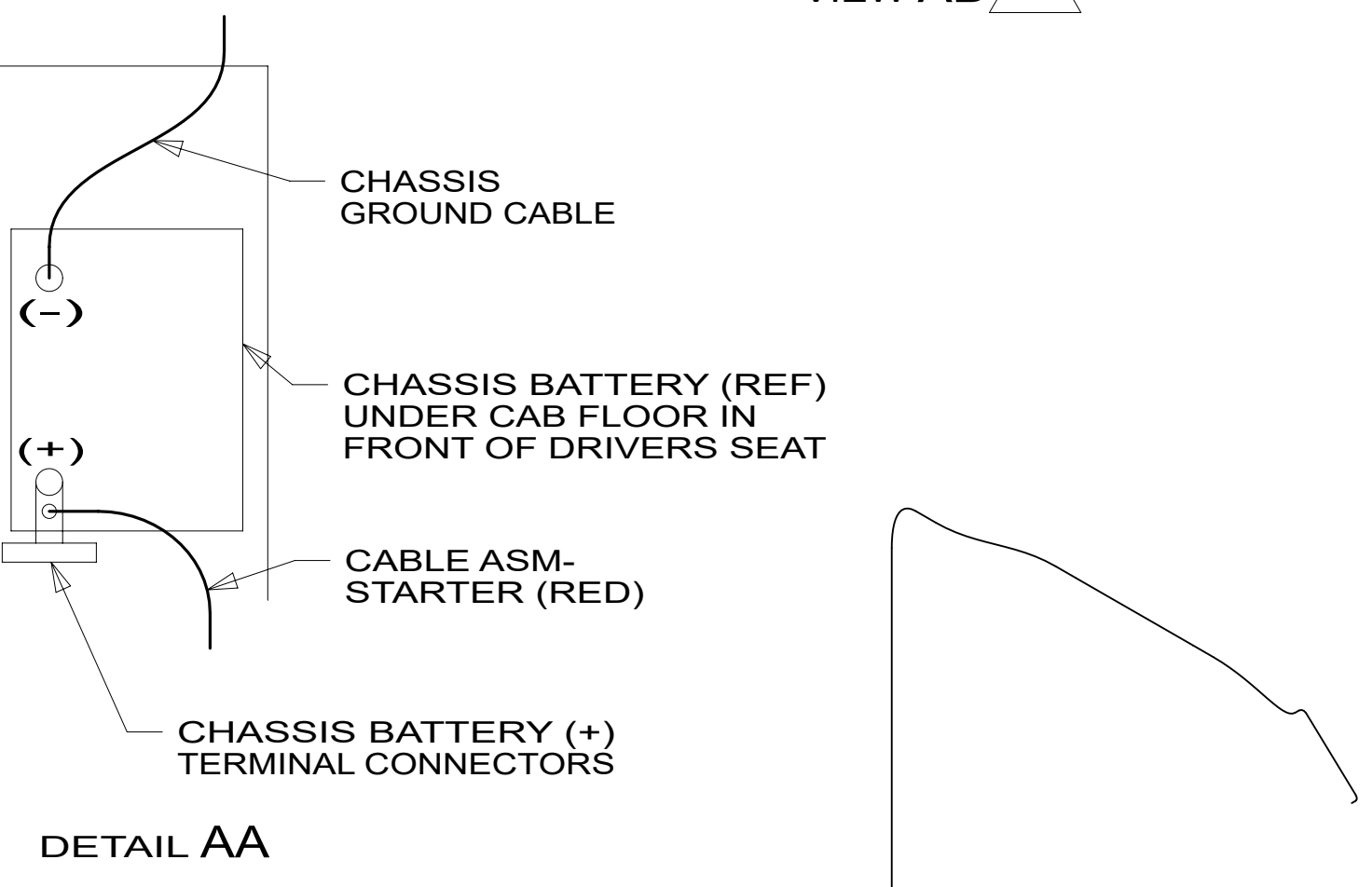
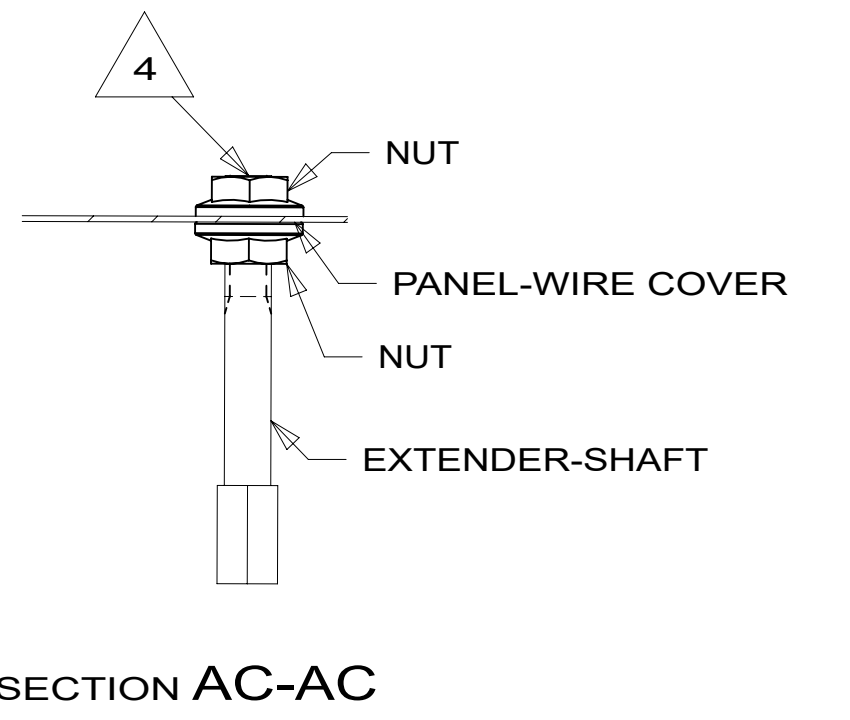
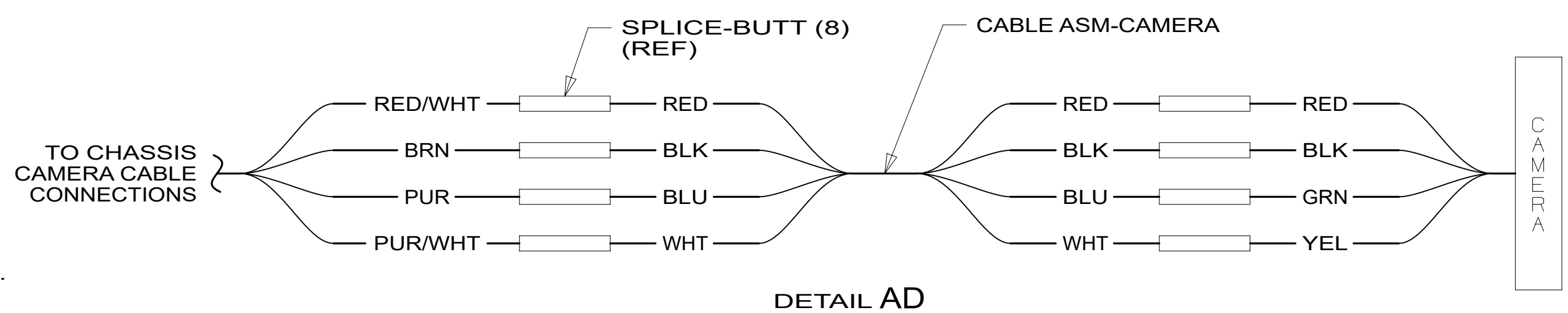
- 60M** HYDRAULIC LEVEL JACKS-AUTO
- 33F** GEN-3.5 KW ONAN DIESEL
- 52G** GEN-3.6KW ONAN LP MICROQUIET
- 265** CODES/STANDARDS-CSA/CMVSS
- 1B1** CODES/STANDARDS USA

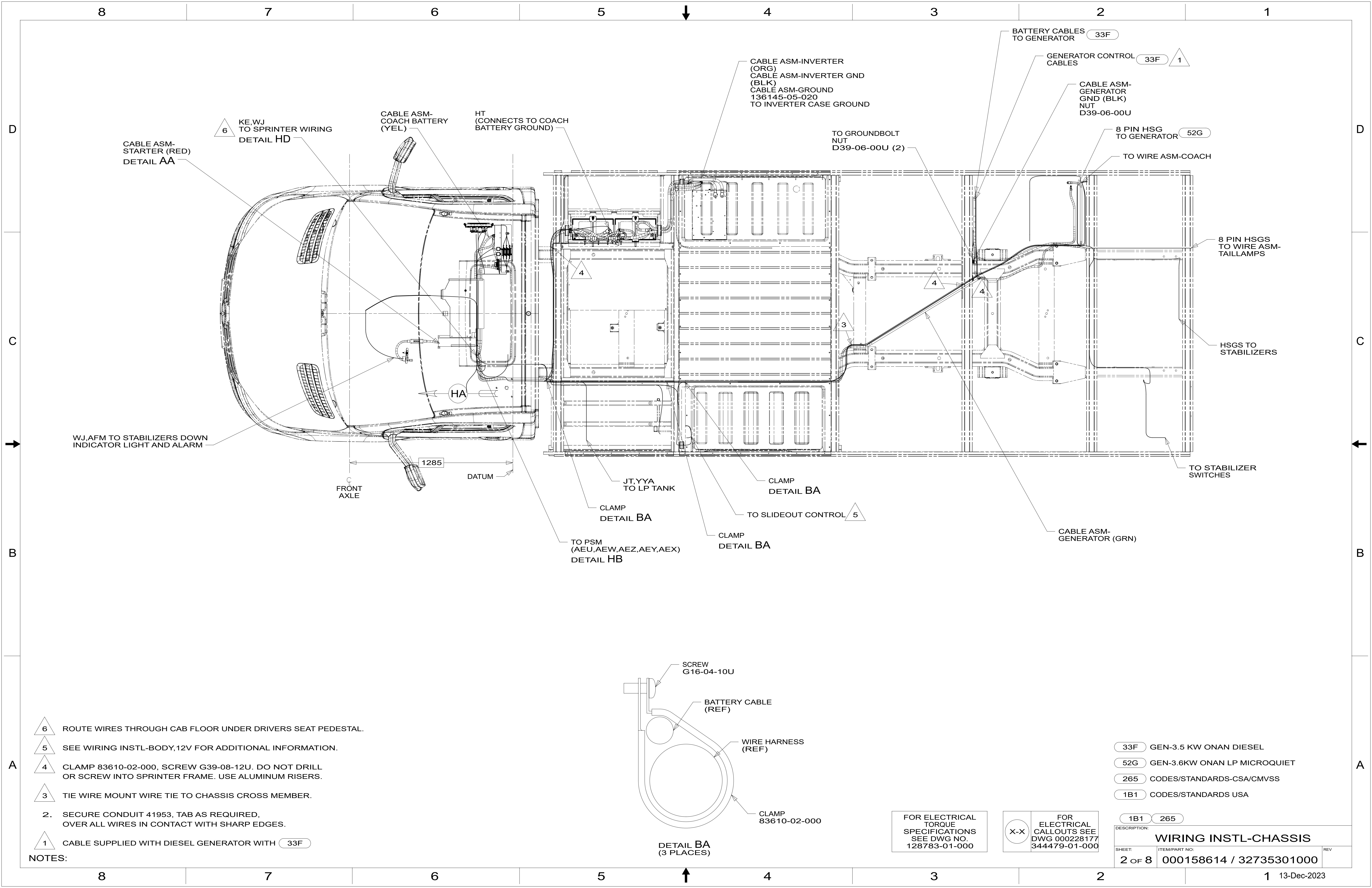
**WINNEBAGO**  
COPYRIGHT 2023 WINNEBAGO INDUSTRIES, INC.

DSNR:		ALL DIMENSIONS ARE IN MILLIMETERS	
DFFR:			
UNSPECIFIED TOLERANCES:	MATERIAL:		
WHOLE DIM (X) :			
ONE-PLACE (X.X) :			
TWO-PLACE (X.XX) :			
ANGLE :			
REFER TO ES0018 FOR FASTENER TIGHTENING GUIDELINES		WEIGHT: (LBS)	FIRST USED:
			<b>20 524D</b>
<b>DESCRIPTION: WIRING INSTL-CHASSIS</b>			
SHEET:	ITEM/PART NO.:	REF:	REV
<b>1 OF 8</b>	<b>000158614 / 32735301000</b>		

FOR ELECTRICAL TORQUE SPECIFICATIONS SEE DWG NO. 128783-01-000

FOR ELECTRICAL CALLOUTS SEE DWG 000228177 344479-01-000





CABLE ASM-STARTER (RED) DETAIL AA

6 KE,WJ TO SPRINTER WIRING DETAIL HD

CABLE ASM-COACH BATTERY (YEL)

HT (CONNECTS TO COACH BATTERY GROUND)

CABLE ASM-INVERTER (ORG)  
CABLE ASM-INVERTER GND (BLK)  
CABLE ASM-GROUND 136145-05-020 TO INVERTER CASE GROUND

BATTERY CABLES TO GENERATOR 33F

GENERATOR CONTROL CABLES 33F 1

CABLE ASM-GENERATOR GND (BLK) NUT D39-06-00U

TO GROUND BOLT NUT D39-06-00U (2)

8 PIN HSG TO GENERATOR 52G

TO WIRE ASM-COACH

8 PIN HSGS TO WIRE ASM-TAILLAMPS

HSGS TO STABILIZERS

TO STABILIZER SWITCHES

CABLE ASM-GENERATOR (GRN)

WJ,AFM TO STABILIZERS DOWN INDICATOR LIGHT AND ALARM

FRONT AXLE

1285

DATUM

HA

JT,YYA TO LP TANK

CLAMP DETAIL BA

TO SLIDEOUT CONTROL 5

CLAMP DETAIL BA

TO PSM (AEU,AEW,AEZ,AEY,AEX) DETAIL HB

CLAMP DETAIL BA

SCREW G16-04-10U

BATTERY CABLE (REF)

WIRE HARNESS (REF)

CLAMP 83610-02-000

DETAIL BA (3 PLACES)

6 ROUTE WIRES THROUGH CAB FLOOR UNDER DRIVERS SEAT PEDESTAL.

5 SEE WIRING INSTL-BODY,12V FOR ADDITIONAL INFORMATION.

4 CLAMP 83610-02-000, SCREW G39-08-12U. DO NOT DRILL OR SCREW INTO SPRINTER FRAME. USE ALUMINUM RISERS.

3 TIE WIRE MOUNT WIRE TIE TO CHASSIS CROSS MEMBER.

2. SECURE CONDUIT 41953, TAB AS REQUIRED, OVER ALL WIRES IN CONTACT WITH SHARP EDGES.

1 CABLE SUPPLIED WITH DIESEL GENERATOR WITH 33F

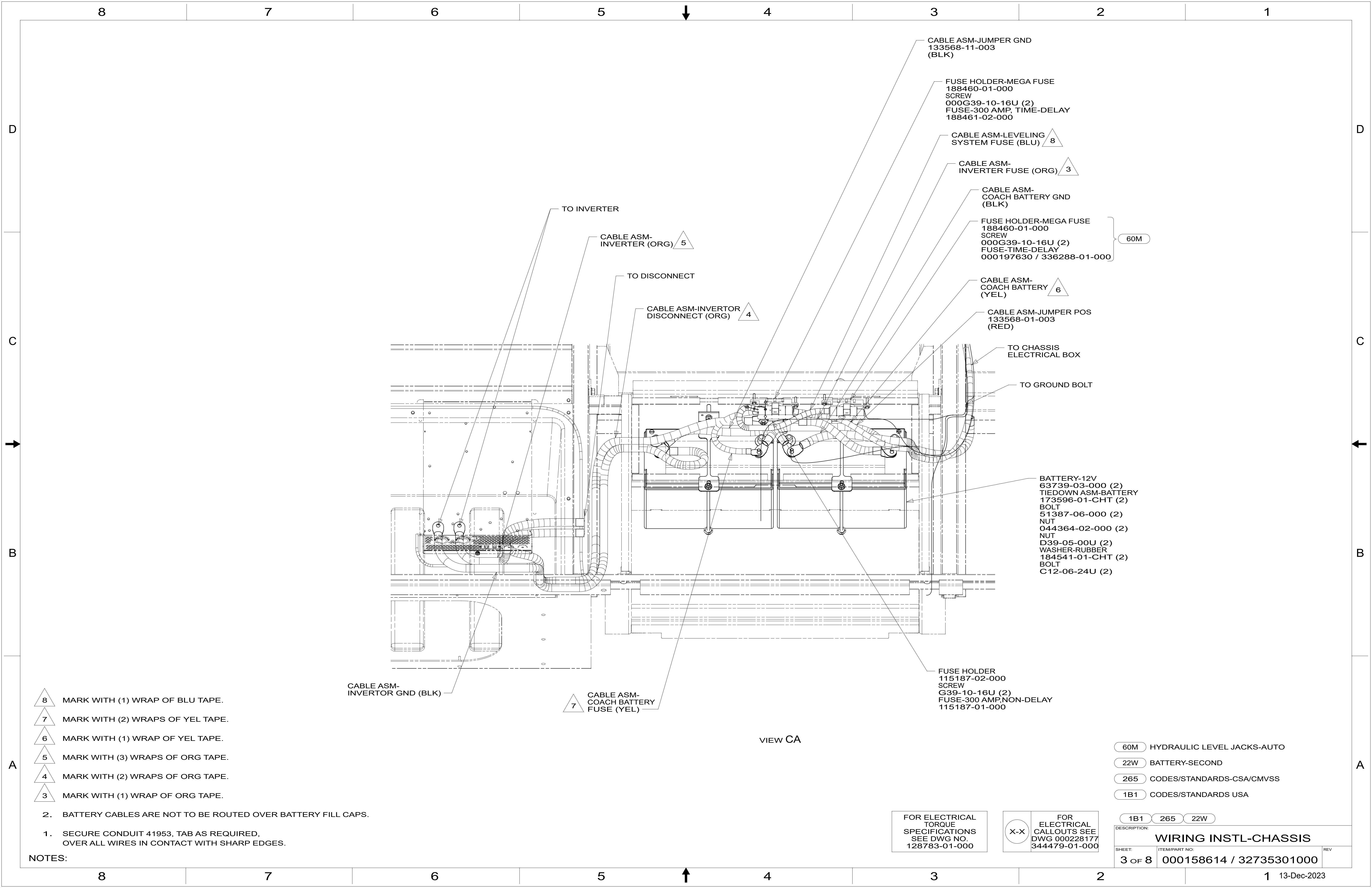
NOTES:

- 33F GEN-3.5 KW ONAN DIESEL
- 52G GEN-3.6KW ONAN LP MICROQUIET
- 265 CODES/STANDARDS-CSA/CMVSS
- 1B1 CODES/STANDARDS USA

FOR ELECTRICAL TORQUE SPECIFICATIONS SEE DWG NO. 128783-01-000

FOR ELECTRICAL CALLOUTS SEE DWG 000228177 344479-01-000

DESCRIPTION:		1B1 265
<b>WIRING INSTL-CHASSIS</b>		
SHEET:	ITEM/PART NO.:	REV:
2 OF 8	000158614 / 32735301000	



- 8 MARK WITH (1) WRAP OF BLU TAPE.
- 7 MARK WITH (2) WRAPS OF YEL TAPE.
- 6 MARK WITH (1) WRAP OF YEL TAPE.
- 5 MARK WITH (3) WRAPS OF ORG TAPE.
- 4 MARK WITH (2) WRAPS OF ORG TAPE.
- 3 MARK WITH (1) WRAP OF ORG TAPE.

- 2. BATTERY CABLES ARE NOT TO BE ROUTED OVER BATTERY FILL CAPS.
- 1. SECURE CONDUIT 41953, TAB AS REQUIRED, OVER ALL WIRES IN CONTACT WITH SHARP EDGES.

NOTES:

CABLE ASM-INVERTOR GND (BLK)

7 CABLE ASM-COACH BATTERY FUSE (YEL)

VIEW CA

FUSE HOLDER  
115187-02-000  
SCREW  
G39-10-16U (2)  
FUSE-300 AMP, NON-DELAY  
115187-01-000

CABLE ASM-JUMPER GND  
133568-11-003  
(BLK)

FUSE HOLDER-MEGA FUSE  
188460-01-000  
SCREW  
000G39-10-16U (2)  
FUSE-300 AMP, TIME-DELAY  
188461-02-000

CABLE ASM-LEVELING  
SYSTEM FUSE (BLU) 8

CABLE ASM-  
INVERTER FUSE (ORG) 3

CABLE ASM-  
COACH BATTERY GND  
(BLK)

FUSE HOLDER-MEGA FUSE  
188460-01-000  
SCREW  
000G39-10-16U (2)  
FUSE-TIME-DELAY  
000197630 / 336288-01-000

60M

CABLE ASM-  
COACH BATTERY  
(YEL) 6

CABLE ASM-JUMPER POS  
133568-01-003  
(RED)

TO CHASSIS  
ELECTRICAL BOX

TO GROUND BOLT

BATTERY-12V  
63739-03-000 (2)  
TIEDOWN ASM-BATTERY  
173596-01-CHT (2)  
BOLT  
51387-06-000 (2)  
NUT  
044364-02-000 (2)  
NUT  
D39-05-00U (2)  
WASHER-RUBBER  
184541-01-CHT (2)  
BOLT  
C12-06-24U (2)

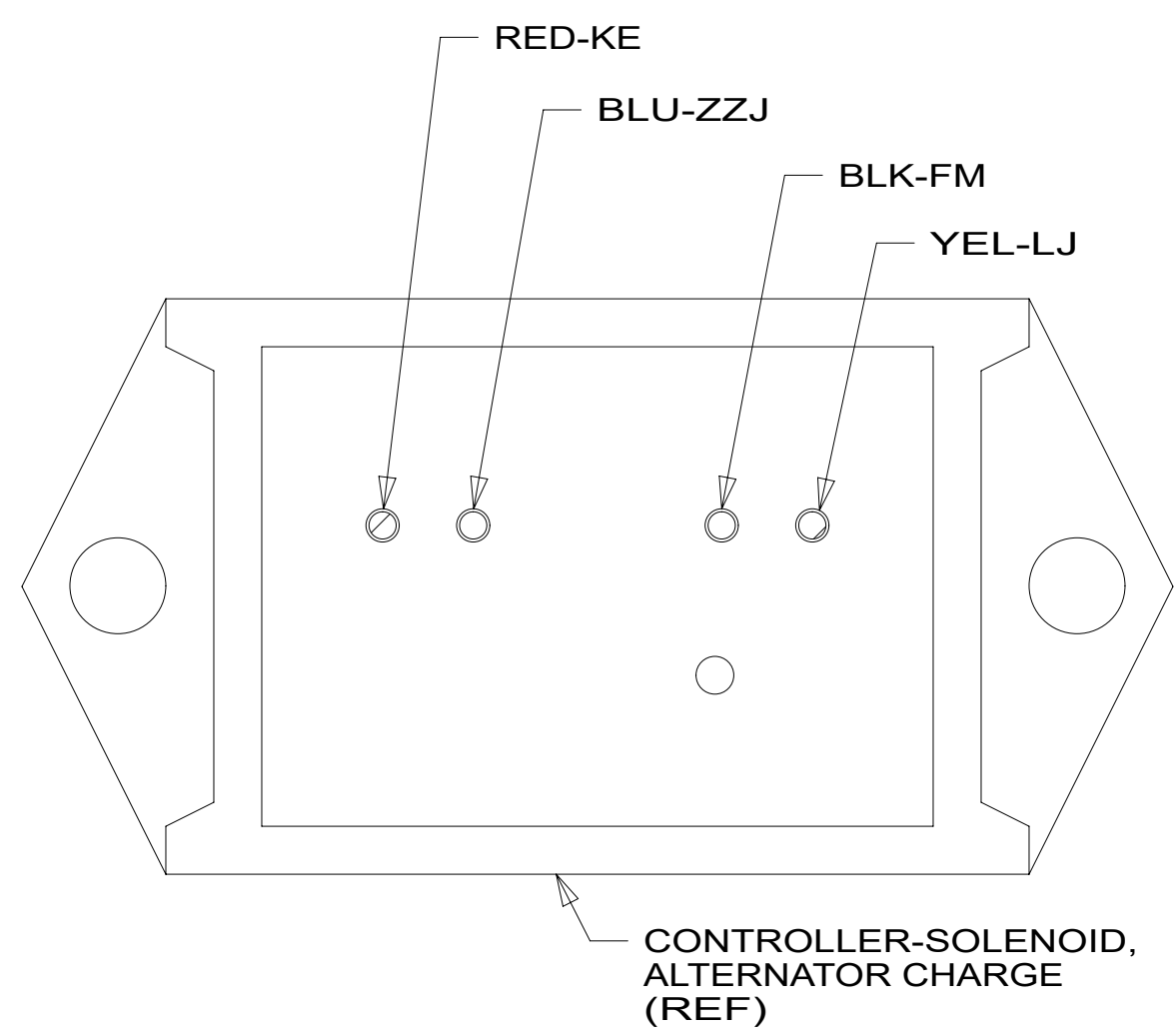
- 60M HYDRAULIC LEVEL JACKS-AUTO
- 22W BATTERY-SECOND
- 265 CODES/STANDARDS-CSA/CMVSS
- 1B1 CODES/STANDARDS USA

FOR ELECTRICAL  
TORQUE  
SPECIFICATIONS  
SEE DWG NO.  
128783-01-000

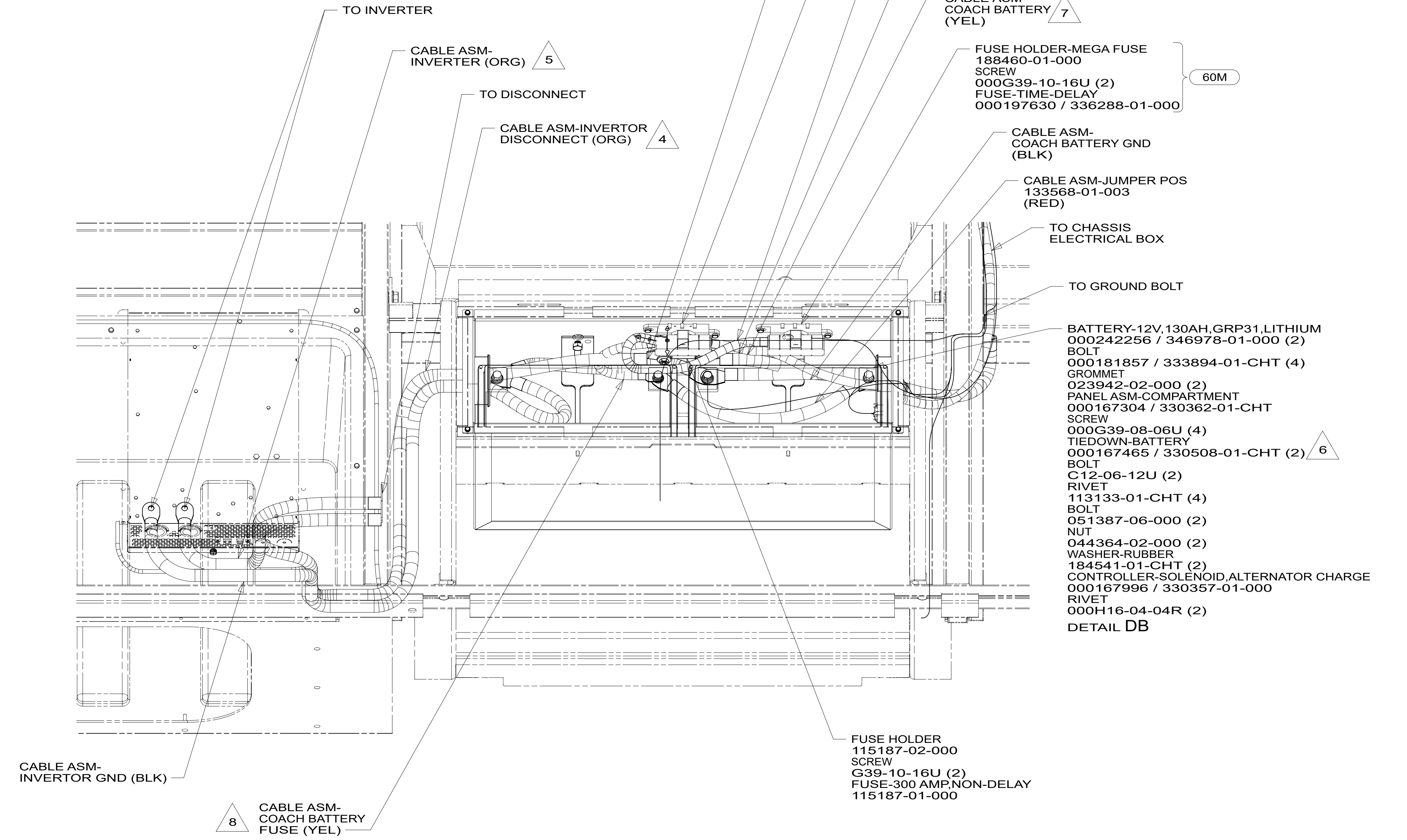
FOR ELECTRICAL  
CALLOUTS SEE  
DWG 000228177  
344479-01-000

DESCRIPTION:	1B1 265 22W	
<b>WIRING INSTL-CHASSIS</b>		
SHEET:	ITEM/PART NO.:	REV
3 OF 8	000158614 / 32735301000	





DETAIL DB 2



VIEW DA

- 9 MARK WITH (1) WRAP OF BLU TAPE.
- 8 MARK WITH (2) WRAPS OF YEL TAPE.
- 7 MARK WITH (1) WRAP OF YEL TAPE.
- 6 RIVET IN PLACE AFTER TIGHTENING.
- 5 MARK WITH (3) WRAPS OF ORG TAPE.
- 4 MARK WITH (2) WRAPS OF ORG TAPE.
- 3 MARK WITH (1) WRAP OF ORG TAPE.
- 2 CIRCUITS FROM WIRE ASM-CHASSIS.

NOTES:  
1. SECURE CONDUIT 41953, TAB AS REQUIRED, OVER ALL WIRES IN CONTACT WITH SHARP EDGES.

FOR ELECTRICAL TORQUE SPECIFICATIONS SEE DWG NO. 128783-01-000

FOR ELECTRICAL CALLOUTS SEE DWG 000228177 344479-01-000

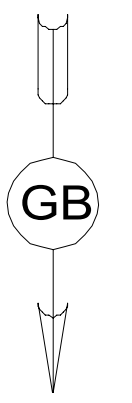
- 60M HYDRAULIC LEVEL JACKS-AUTO
- 22N BATTERY-LITHIUM ION
- 265 CODES/STANDARDS-CSA/CMVSS
- 1B1 CODES/STANDARDS USA

DESCRIPTION: <b>WIRING INSTL-CHASSIS</b>		
SHEET: 4 OF 8	ITEM/PART NO: 000158614 / 32735301000	REV

8 7 6 5 4 3 2 1

D  
C  
B  
A

D  
C  
B  
A



PANEL ASM-SOLENOID  
000271933 / 354075-01-000  
RIVET  
165072-01-CHT (2)

PANEL ASM-CIRCUIT BREAKER  
000166976 / 329974-01-000  
SCREW-PAN,HEAD  
G39-08-08U (6)

PASSENGER SIDE  
SEAT PEDESTAL  
(REF)

EB

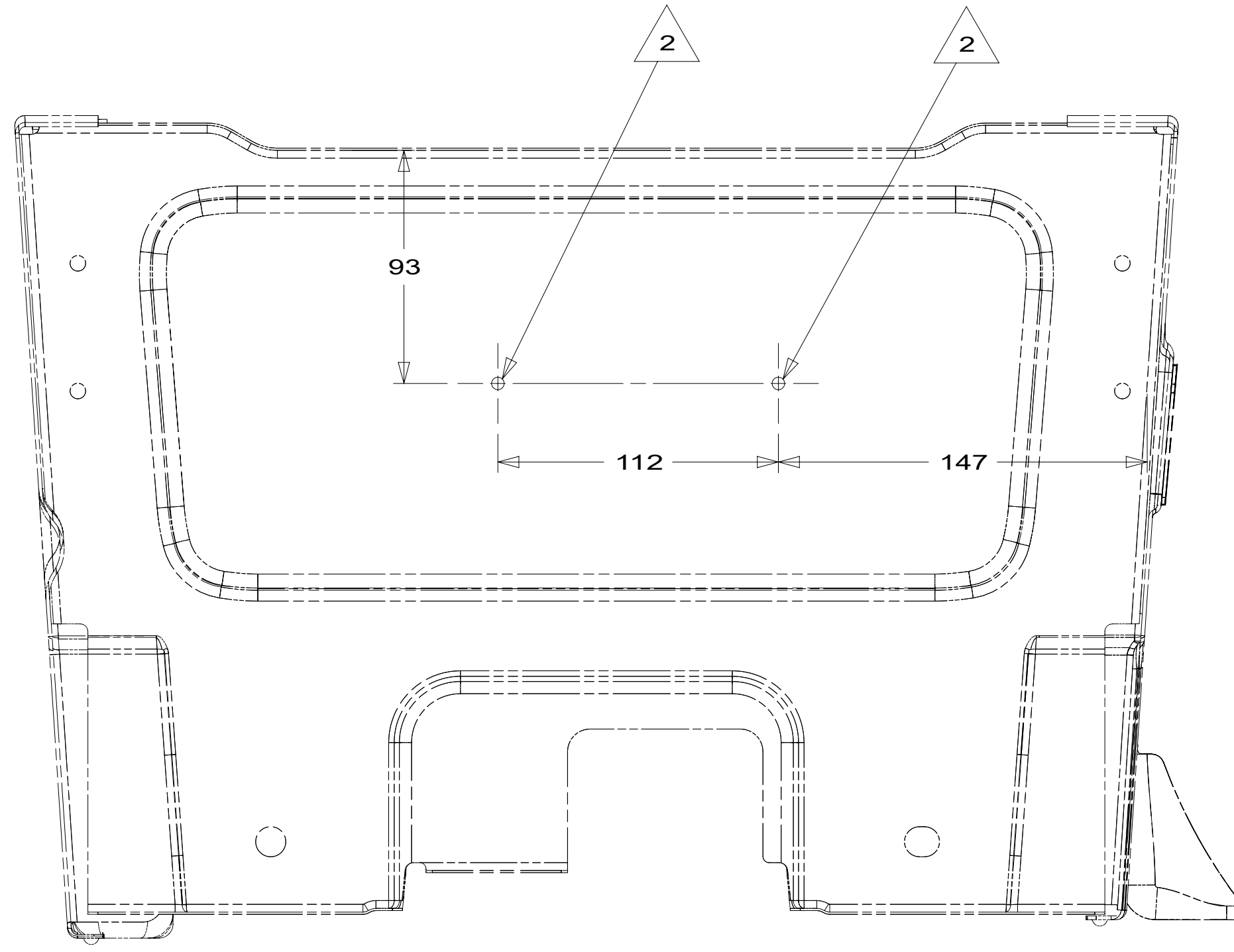
GA

FA

LABEL  
098379-01-000

LABEL  
098379-04-000

VIEW EA



VIEW EB

2 DRILL 5 MM HOLE AT LOCATION SHOWN.

1. SECURE CONDUIT 41953, TAB AS REQUIRED,  
OVER ALL WIRES IN CONTACT WITH SHARP EDGES.

NOTES:

FOR ELECTRICAL  
TORQUE  
SPECIFICATIONS  
SEE DWG NO.  
128783-01-000

FOR  
ELECTRICAL  
CALLOUTS SEE  
DWG 000228177  
344479-01-000

265 CODES/STANDARDS-CSA/CMVSS

1B1 CODES/STANDARDS USA

1B1 265

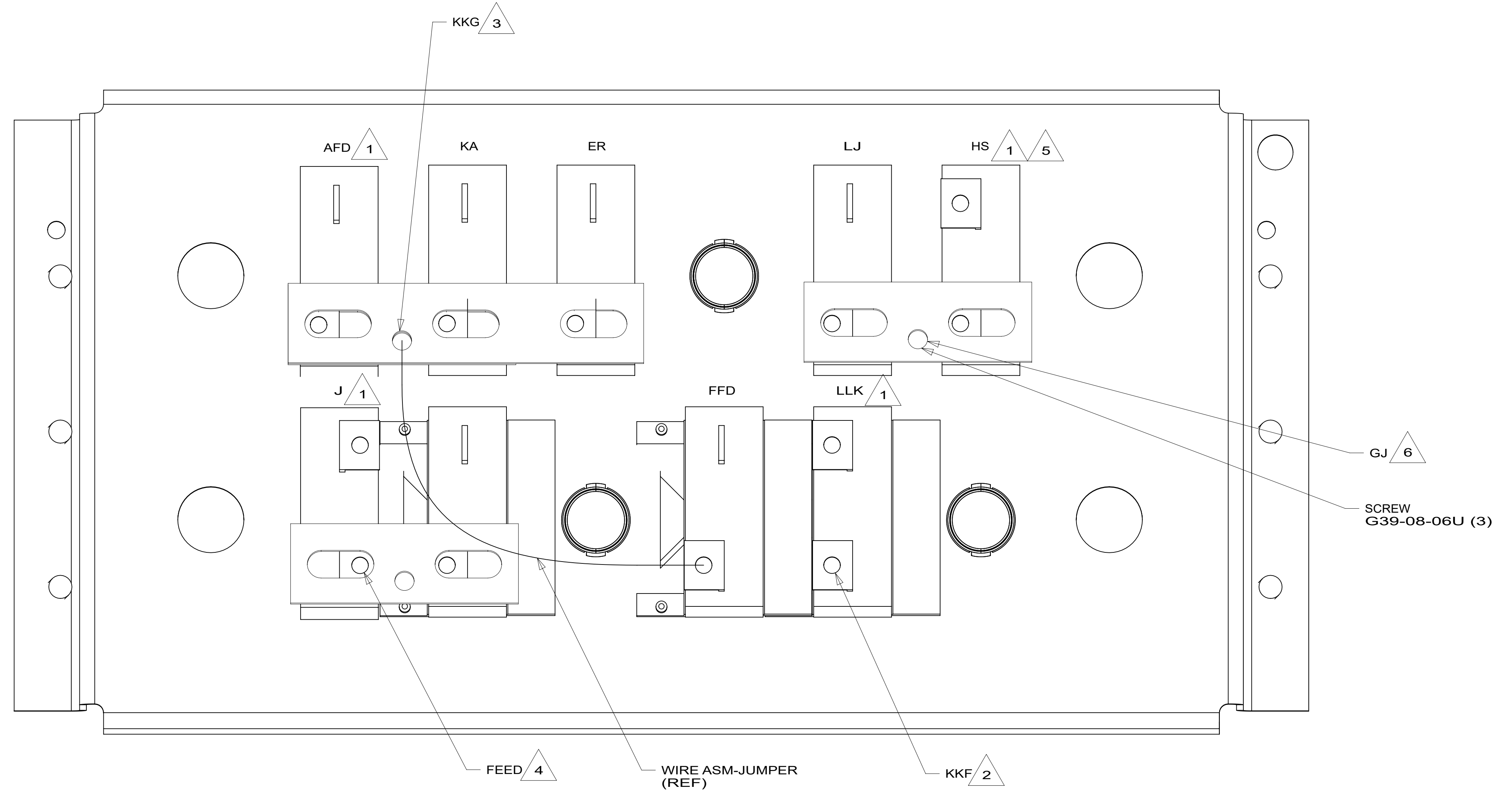
DESCRIPTION:  
**WIRING INSTL-CHASSIS**

SHEET: 5 OF 8 ITEM/PART NO: 000158614 / 32735301000 REV

8 7 6 5 4 3 2 1 13-Dec-2023

CABLE ASM-STARTER (RED)	192678-02-000
CABLE ASM-COACH BATTERY (YEL)	141415-52-040
CABLE ASM-COACH BATTERY FUSE (YEL)	141415-52-003
CABLE ASM-COACH BATTERY GND (BLK)	000284631_00700 / 357056-01-007
CABLE ASM-GENERATOR (GRN)	141415-42-076
CABLE ASM-GENERATOR GND (BLK)	133566-12-017
CABLE ASM-GENERATOR (GRN)	141416-42-069
CABLE ASM-GENERATOR GND (BLK)	133567-12-011
CABLE ASM-INVERTOR FUSE (ORG)	000288368_00400 / 357492-01-004
CABLE ASM-INVERTOR DISCONNECT (ORG)	000284705_01500 / 357069-01-015
CABLE ASM-INVERTOR (ORG)	000284705_00600 / 357059-01-006
CABLE ASM-INVERTOR GND (BLK)	000284631_01500 / 357056-01-015
CABLE ASM-LEVELING SYSTEM FUSE (BLU)	141415-21-003

- △ 2
- △ 4
- 52G
- 52G
- 33F
- 33F
- △ 8
- △ 9
- △ 10
- 60M



VIEW FA

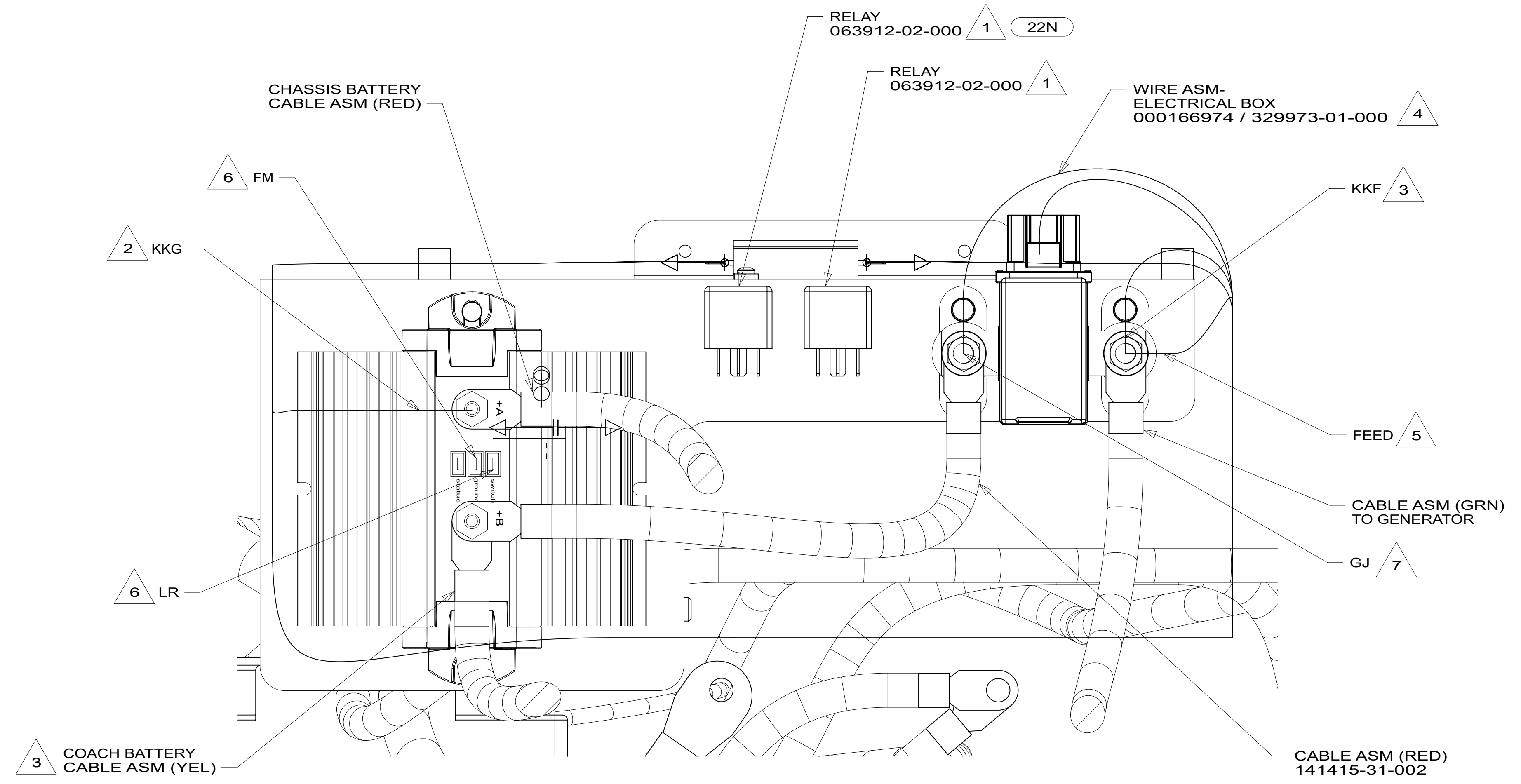
- NOTES:
- △ 10 MARK WITH (3) WRAPS OF ORG TAPE.
  - △ 9 MARK WITH (2) WRAPS OF ORG TAPE.
  - △ 8 MARK WITH (1) WRAP OF ORG TAPE.
  - 7. TAPE BACK UNUSED WIRES TO HARNESS.
  - △ 6 MARK WITH (1) WRAP OF RED TAPE.
  - △ 5 MARK WITH (1) WRAP OF WHT TAPE.
  - △ 4 MARKED WITH (2) WRAPS OF YEL TAPE.
  - △ 3 MARK WITH (1) WRAP OF PUR TAPE.
  - △ 2 MARK WITH (1) WRAP OF YEL TAPE.
  - △ 1 CIRCUIT FROM WIRE ASM-CHASSIS.

- 60M HYDRAULIC LEVEL JACKS-AUTO
- 52G GEN-3.6KW ONAN LP MICROQUIET
- 33F GEN-3.2 KW ONAN DIESEL
- 265 CODES/STANDARDS-CSA/CMVSS
- 1B1 CODES/STANDARDS USA

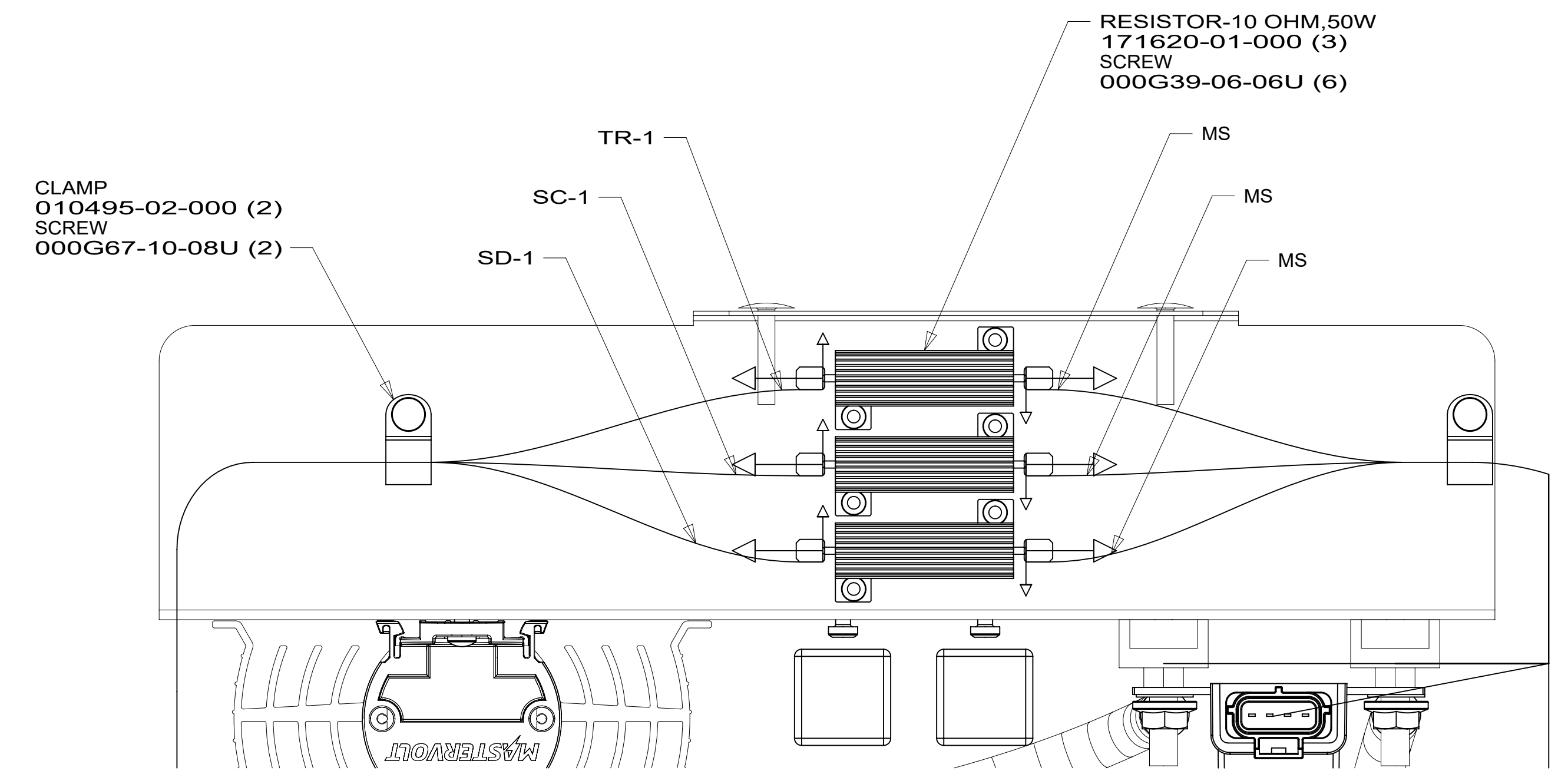
FOR ELECTRICAL TORQUE SPECIFICATIONS SEE DWG NO. 128783-01-000

FOR ELECTRICAL CALLOUTS SEE DWG 000228177 344479-01-000

DESCRIPTION:	1B1 265	
<b>WIRING INSTL-CHASSIS</b>		
SHEET:	ITEM/PART NO:	REV
6 OF 8	000158614 / 32735301000	



VIEW GA



VIEW GB

- NOTES:
- 7 MARK WITH (1) WRAP OF RED TAPE.
  - 6 WIRE IS PART OF WIRE ASM-CHASSIS.
  - 5 MARK WITH (2) WRAPS OF YEL TAPE.
  - 4 TAPE BACK UNUSED WIRES TO HARNESS.
  - 3 MARK WITH (1) WRAP OF YEL TAPE.
  - 2 MARK WITH (1) WRAP OF PUR TAPE.
  - 1 SEE WIRE ASM-CHASSIS FOR ADDITIONAL INFORMATION.

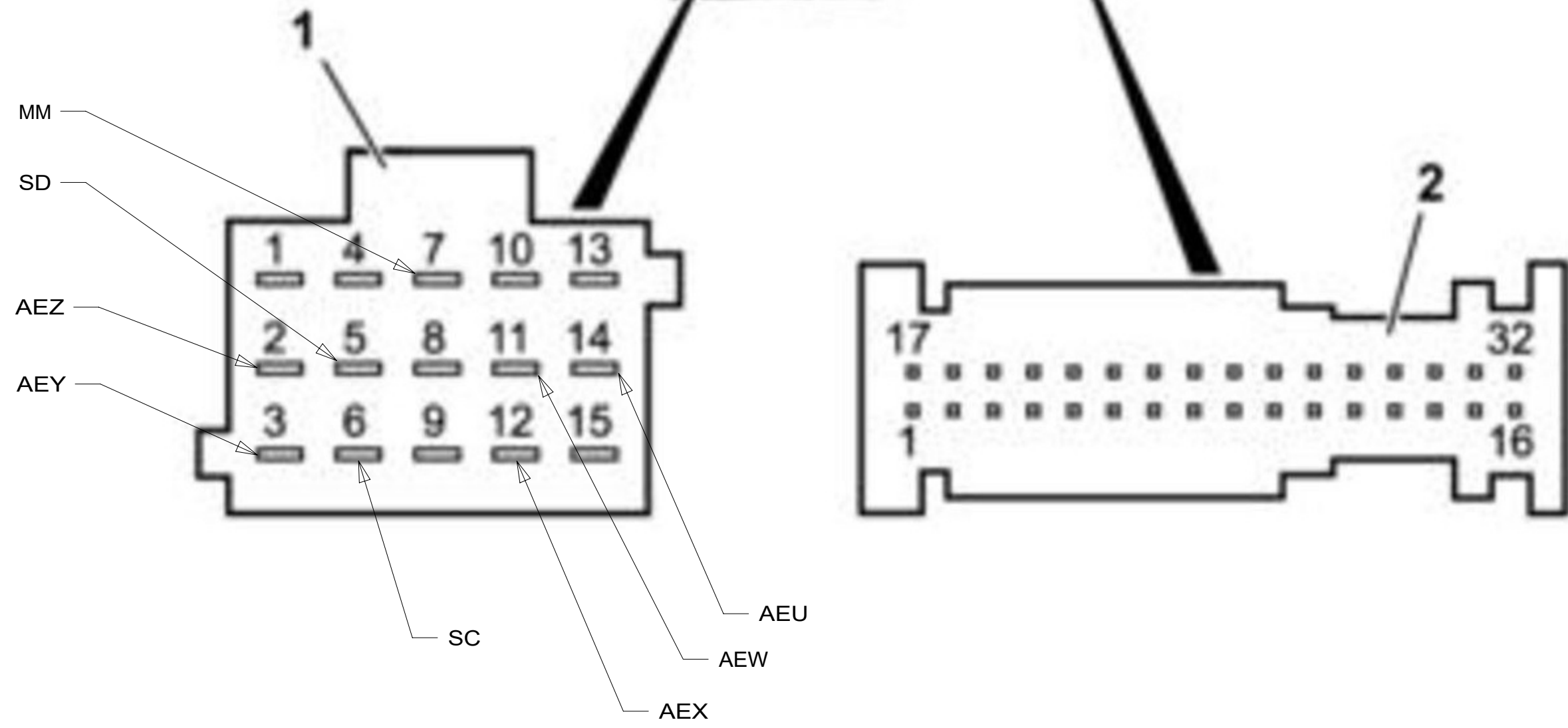
FOR ELECTRICAL TORQUE SPECIFICATIONS SEE DWG NO. 128783-01-000

FOR ELECTRICAL CALLOUTS SEE DWG 000228177 344479-01-000

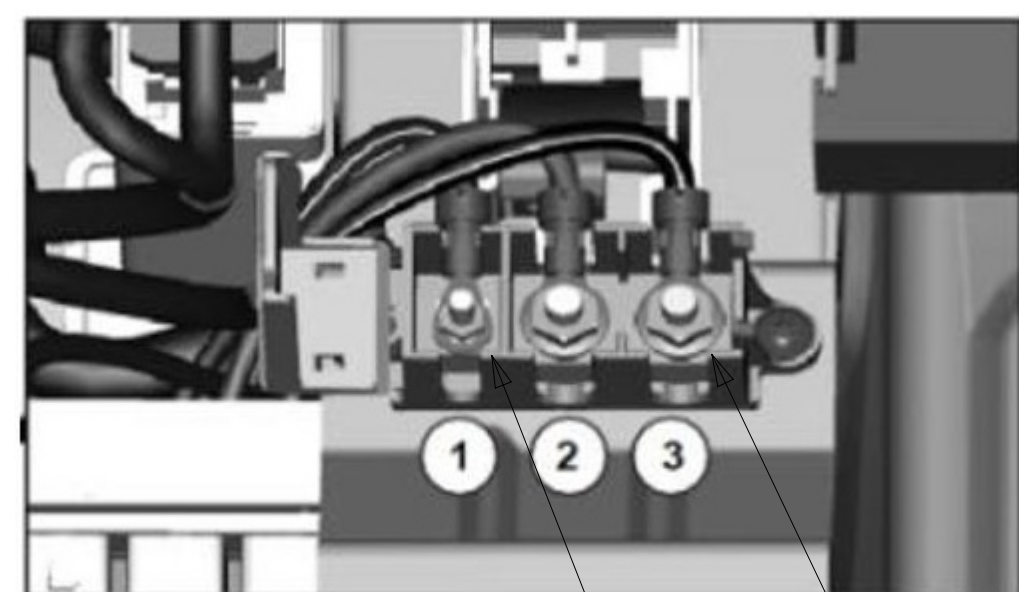
- 22N BATTERY-LITHIUM ION
- 265 CODES/STANDARDS-CSA/CMVSS
- 1B1 CODES/STANDARDS USA

DESCRIPTION:		1B1 265
<b>WIRING INSTL-CHASSIS</b>		
SHEET:	ITEM/PART NO.:	REV
7 OF 8	000158614 / 32735301000	



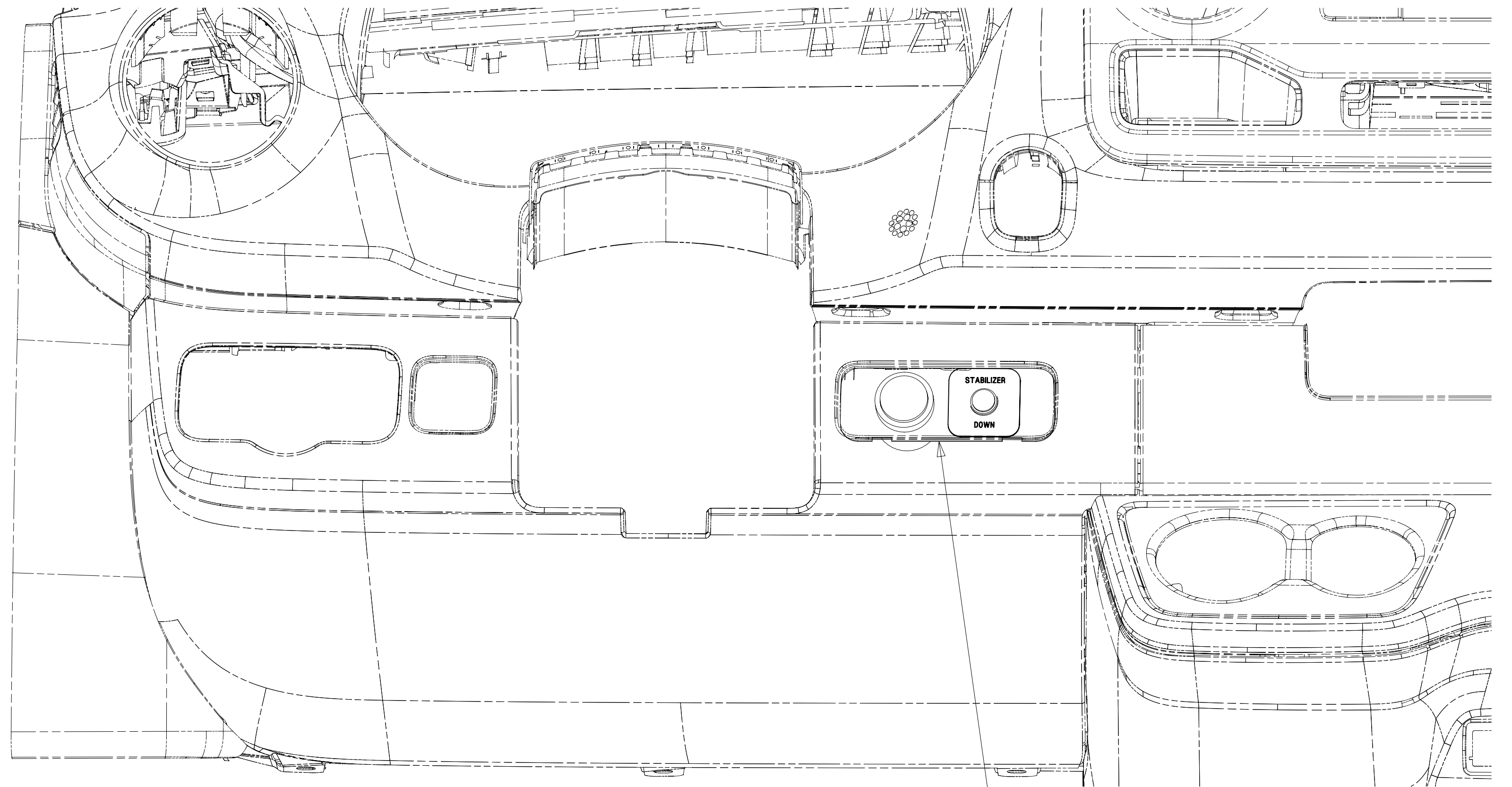


DETAIL HB 1

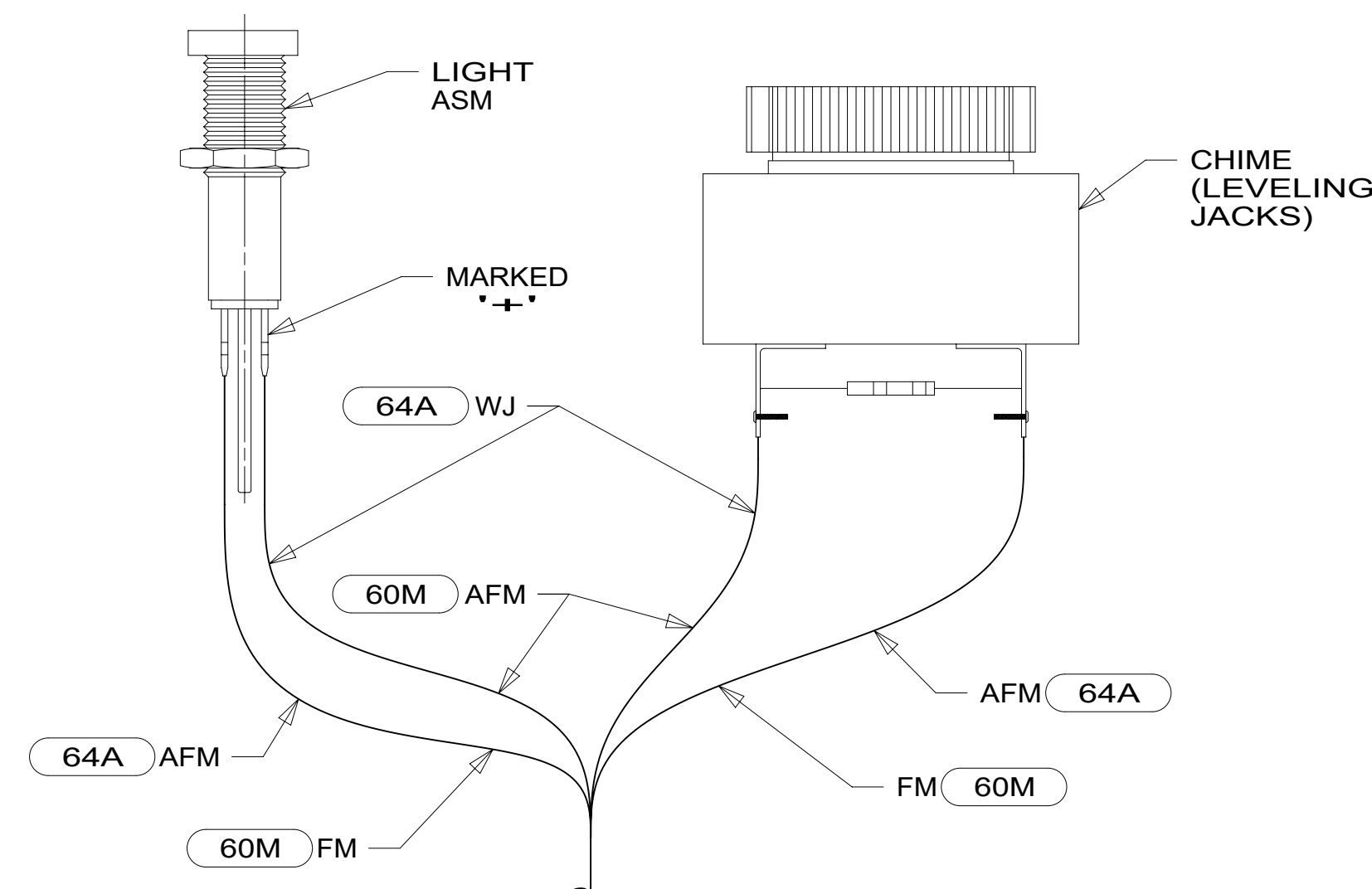


Terminal	U [V] / I [A]	wire color
1 <sup>st</sup> power with engine running	12V / 10A	blue/yellow
2 <sup>nd</sup> battery direct power	12V / 25A	red/gray
3 <sup>rd</sup> ignition power	12V / 15A	black/yellow

DETAIL HD 3



LIGHT ASM-INDICATOR, RED  
 190682-01-000  
 APPLIQUE-STABILIZER DOWN  
 000027561 / 316014-01-CHT  
 ALARM-JACKS DOWN  
 160876-01-000  
 PLATE-STABILIZER  
 000197759 / 336355-01-CHT  
 DETAIL HC



WIRE ASM-CHASSIS  
 DETAIL HC

- 60M HYDRAULIC LEVEL JACKS-AUTO
- 64A JACKS-STABILIZING, ELECTRIC
- 265 CODES/STANDARDS-CSA/CMVSS
- 1B1 CODES/STANDARDS USA

- 3 CONNECTION POINT IS LOCATED UNDER DRIVERS SEAT.
2. SECURE CONDUIT 41953, TAB AS REQUIRED, OVER ALL WIRES IN CONTACT WITH SHARP EDGES.
- 1 PSM IS LOCATED UNDER DRIVERS SEAT.

FOR ELECTRICAL TORQUE SPECIFICATIONS SEE DWG NO. 128783-01-000

FOR ELECTRICAL CALLOUTS SEE DWG 000228177 344479-01-000

DESCRIPTION:	1B1 265	
<b>WIRING INSTL-CHASSIS</b>		
SHEET:	ITEM/PART NO.:	REV
8 OF 8	000158614 / 32735301000	