

ROUTE CAMERA CABLE
BEHIND SHOWER

ANTENNA-
SATELLITE RADIO
(CHASSIS SUPPLIED)
PLATE-SATELLITE PREP
177256-06-CHT
177256-06-CHT
SCREW
G11-08-08U (4) 6

EXTENSION-ANTENNA,
SAT RADIO
181908-04-000 6

MONITOR-POWER SUPPLY
DETAIL AA

MONITOR-WINDSHIELD MOUNT
000026027 / 315477-01-000 4

MONITOR-POWER SUPPLY
SCREW
G67-08-12U (2)

WIRE ASM-
CHASSIS

ROUTED THROUGH
FLOOR IN THIS AREA

1 2 CABLE ASM-MONITOR

1 CIRCUITS
TR,UR,KE

ROUTE CAMERA
CABLE BELOW
BEDBOARD

DETAIL AA

- 6 REMOVE ANTENNA FROM CHASSIS CAB ROOF AND RELOCATE TO MAIN ROOF. USE ANTENNA EXTENSION BETWEEN CHASSIS ANTENNA CABLE AND ANTENNA WHEN RELOCATING ANTENNA. SECURE BOTH ENDS OF ANTENNA EXTENSION WITH TAPE.
- 5 ROUTE CAMERA CABLE, 6-PIN HSG, AND FUSE THROUGH HOLE IN CABINET. CONNECT TO MONITOR POWER SUPPLY.
- 4 ROUTE CAMERA WIRE ABOVE HEADLINER.
- 3 ROUTE CAMERA CABLE UP B-PILLAR.
- 2 ROUTE REAR MONITOR CAMERA CABLE ALONG FRAME RAIL WITH WIRE ASM-CHASSIS. SEE WIRING INSTL-CHASSIS FOR ADDITIONL INFORMATION.
- 1 SEE WIRE ASM-CHASSIS FOR ADDITIONAL INFORMATION.

NOTES:

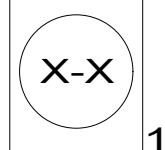
- 265 CODES/STANDARDS-CSA/CMVSS
- 1B1 CODES/STANDARDS USA
- 1B1 265



DSNR:		ALL DIMENSIONS ARE IN MILLIMETERS	
DIFFR:		MATERIAL:	
UNSPECIFIED TOLERANCES:			
WHOLE DIM (X)	: 3		
ONE-PLACE (X.X)	: 1.5		
TWO-PLACE (X.XX)	: 0.50		
ANGLE	: 1°		
REFER TO ES0018 FOR FASTENER TIGHTENING GUIDELINES		WEIGHT: (LBS)	FIRST USED:
			16 423T
DESCRIPTION: RADIO/MONITOR INSTL			
SHEET:	ITEM/PART NO:	REV	
1 OF 3	000209578 / 30099901000		
REF:		1 30-Oct-2018	

FOR ELECTRICAL
TORQUE
SPECIFICATIONS
SEE DWG NO.
128783-01-000

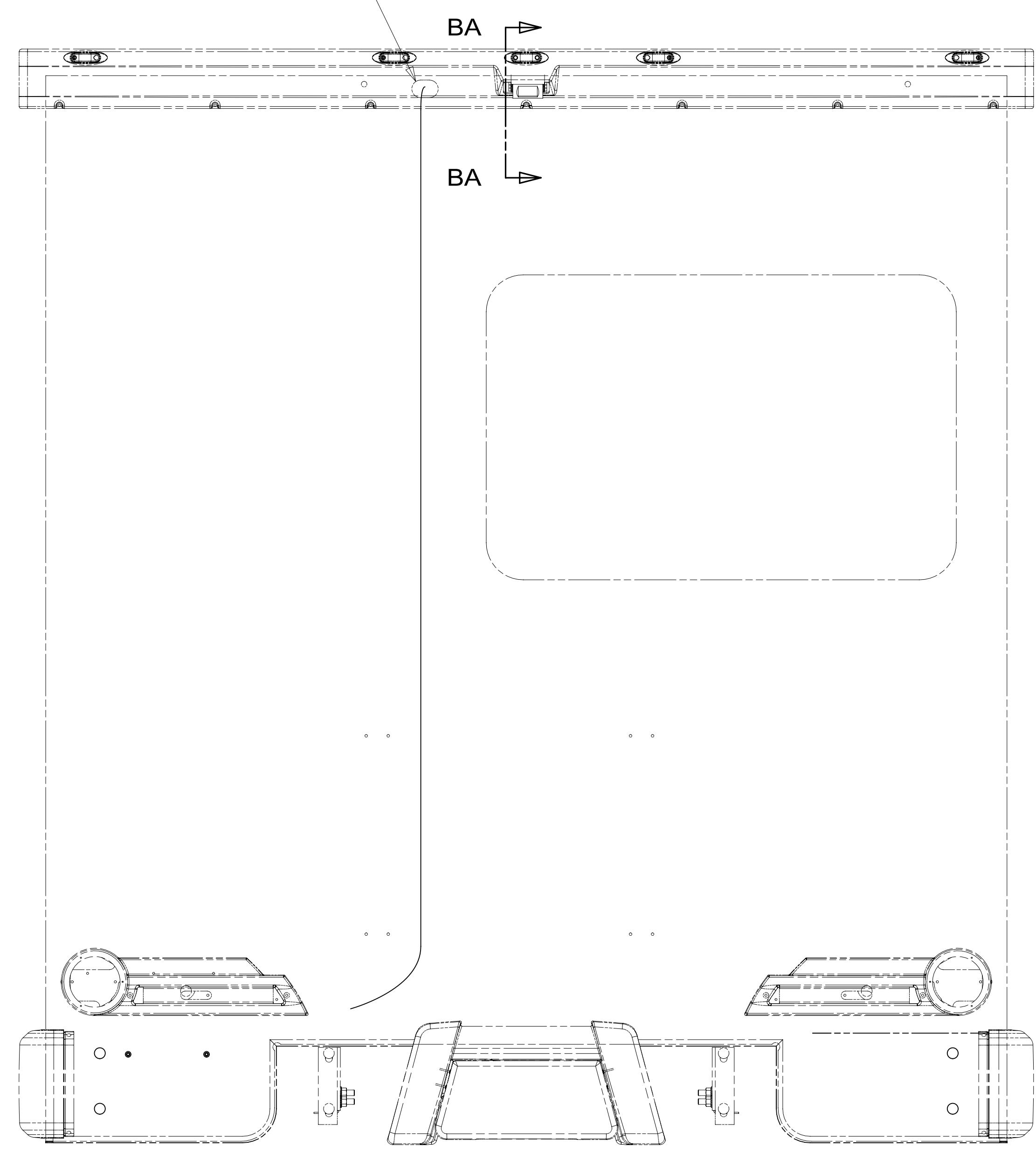
FOR
ELECTRICAL
CALLOUTS
SEE DWG NO.
121339-01-000



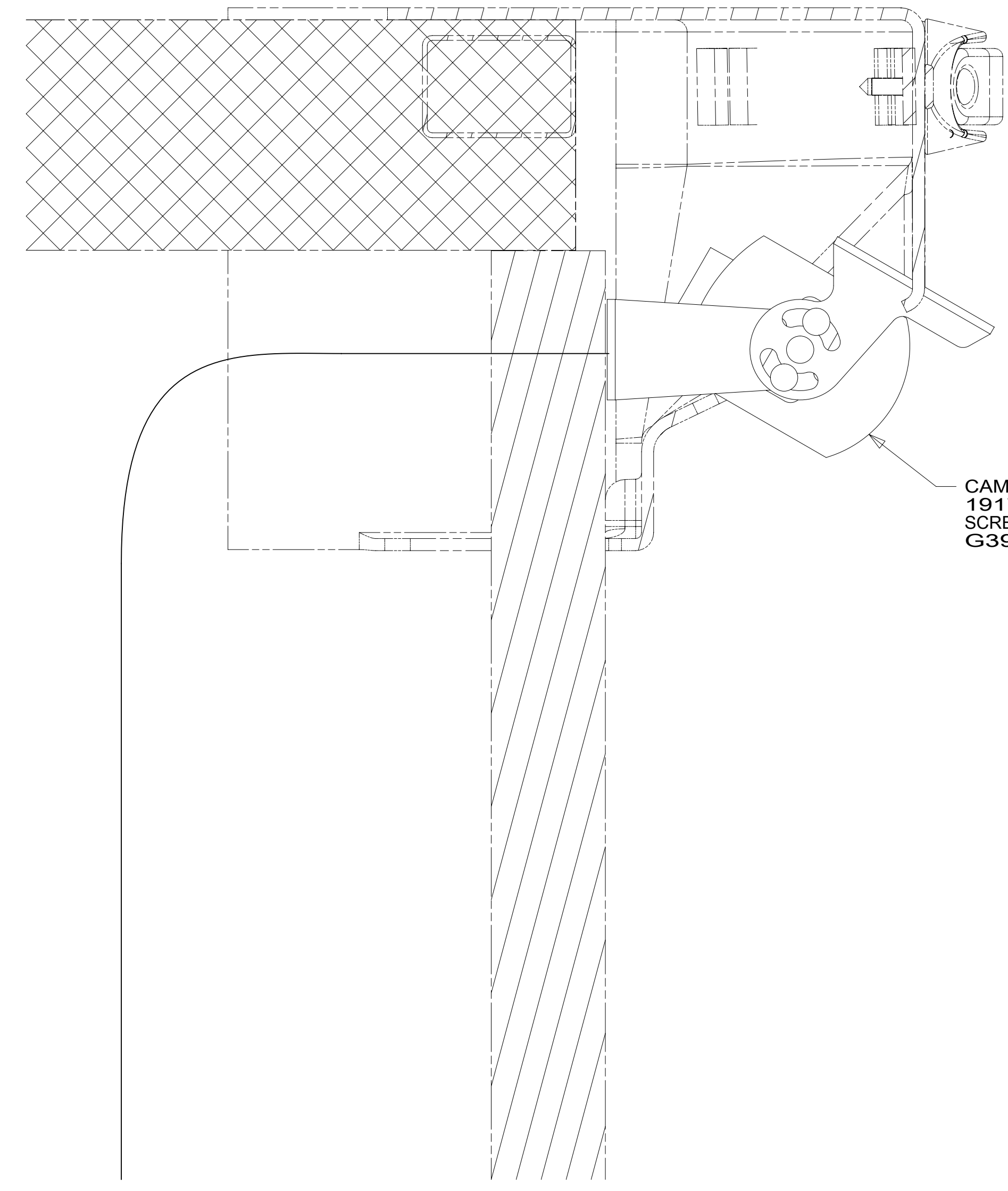
8 7 6 5 4 3 2 1



ROUTE CAMERA CABLE THROUGH BACKWALL



VIEW BA



CAMERA-REAR, W/BACKET
191779-02-000
SCREW
G39-10-12U (5)

SECTION BA-BA

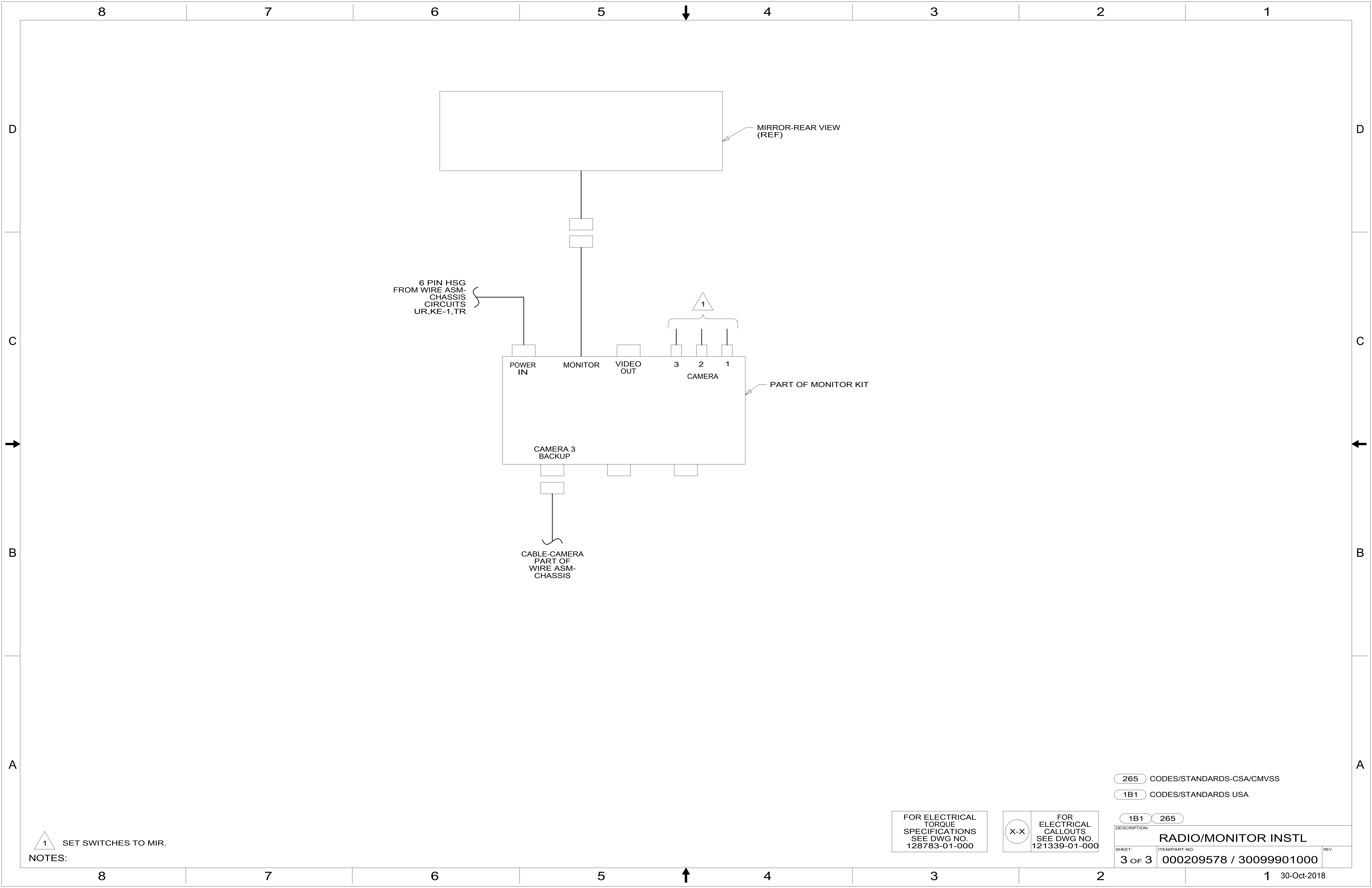
- 265 CODES/STANDARDS-CSA/CMVSS
- 1B1 CODES/STANDARDS USA

FOR ELECTRICAL TORQUE SPECIFICATIONS SEE DWG NO. 128783-01-000

FOR ELECTRICAL CALLOUTS SEE DWG NO. 121339-01-000

DESCRIPTION:	1B1 265	
RADIO/MONITOR INSTL		
SHEET:	ITEM/PART NO:	REV
2 OF 3	000209578 / 30099901000	

8 7 6 5 4 3 2 1 30-Oct-2018



6 PIN HSG
FROM WIRE ASM-
CHASSIS
CIRCUITS
UR,KE-1,TR

MIRROR-REAR VIEW
(REF)

POWER IN MONITOR VIDEO OUT
3 2 1
CAMERA

PART OF MONITOR KIT

CAMERA 3
BACKUP

CABLE-CAMERA
PART OF
WIRE ASM-
CHASSIS

1 SET SWITCHES TO MIR.
NOTES:

FOR ELECTRICAL
TORQUE
SPECIFICATIONS
SEE DWG NO.
128783-01-000

FOR
ELECTRICAL
CALLOUTS
SEE DWG NO.
121339-01-000

265 CODES/STANDARDS-CSA/CMVSS
1B1 CODES/STANDARDS USA

DESCRIPTION:		1B1 265	
RADIO/MONITOR INSTL			
SHEET:	ITEM/PART NO.:	REV	
3 OF 3	000209578 / 30099901000		