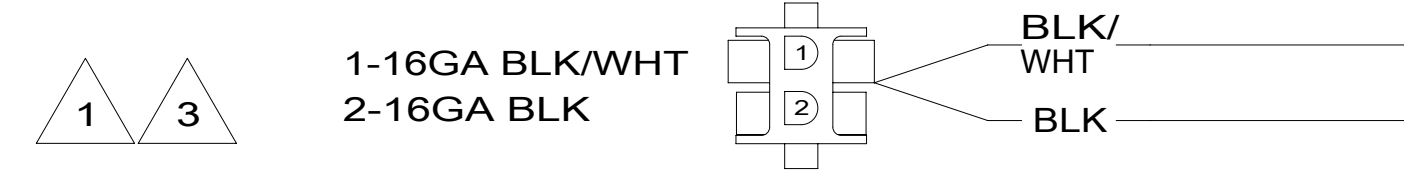
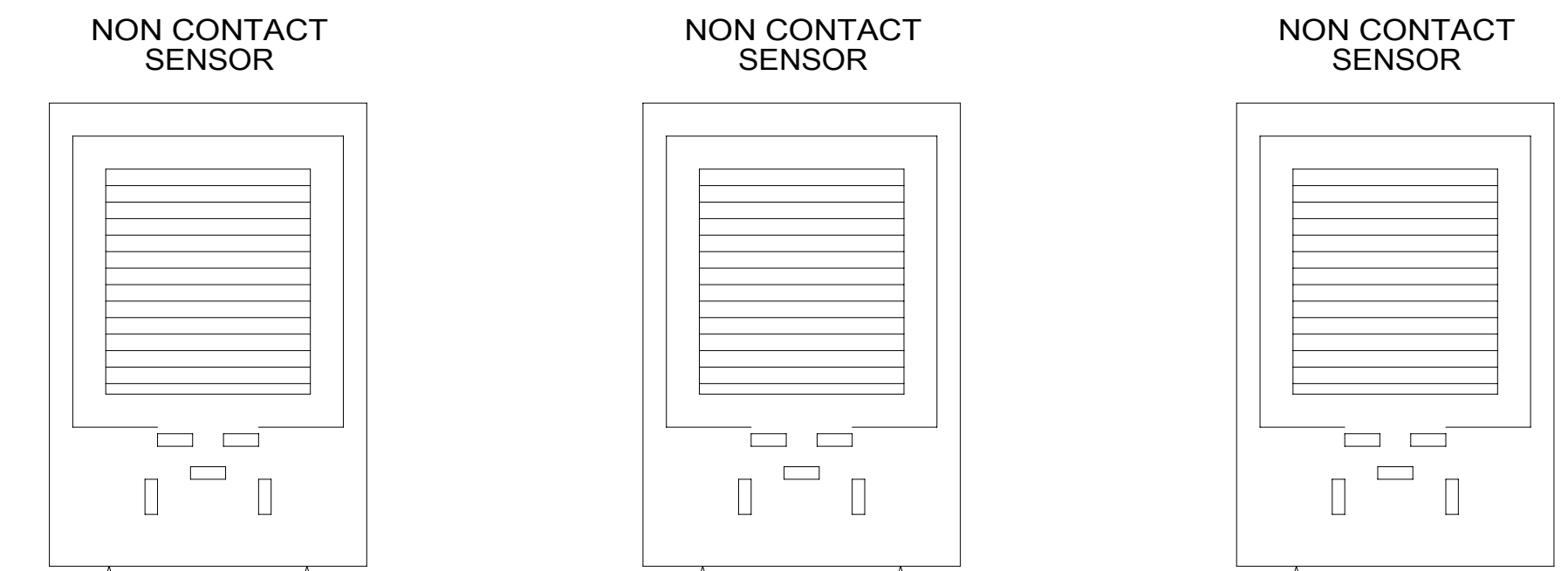


WIRING DIAGRAM-TANK,WATER
OR
WIRING DIAGRAM-TANK,MAIN
(WIRE ASM-151316 REV A)



WIRING DIAGRAM-AUX HOLDING
(WIRE ASM-151317 REV A)

- NOTES:
- 3 IF TWO MONITOR PANELS ARE UTILIZED THIS WIRE ASM CONNECTS TO WIRE ASM-TANK,DIODE PACK 151808-01 SHT2.
 - 2 IF TWO MONITOR PANELS ARE UTILIZED THIS WIRE ASM CONNECTS TO WIRE ASM-TANK,DIODE PACK 151808-02 SHT2.
 - 1 IF ONLY ONE MONITOR PANEL IS USED SEE WIRING DIAGRAM-BODY FOR ADDITIONAL INFORMATION.

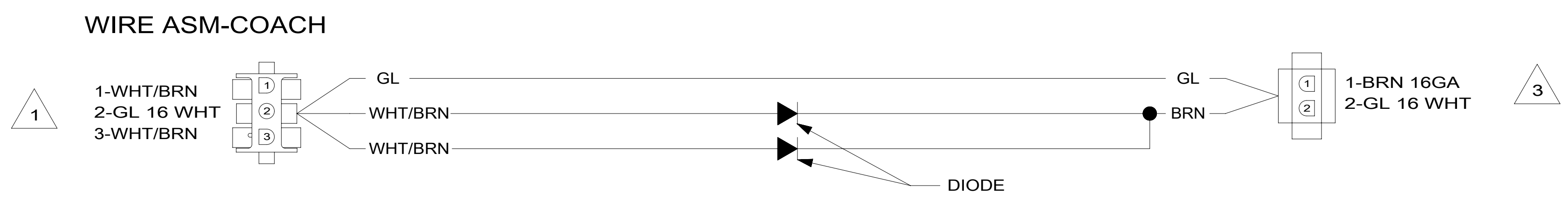
WINNEBAGO[®]
COPYRIGHT 2016 WINNEBAGO INDUSTRIES, INC.

| | | |
|--|-----------------------------------|---------------|
| DSNR: | ALL DIMENSIONS ARE IN MILLIMETERS | |
| DFFR: | MATERIAL: | |
| UNSPECIFIED TOLERANCES: | | |
| WHOLE DIM (X) : | | |
| ONE-PLACE (X.X) : | | |
| TWO-PLACE (X.XX) : | | |
| ANGLE : | | |
| REFER TO ES0018 FOR FASTENER TIGHTENING GUIDELINES | WEIGHT: (LBS) | FIRST USED: |
| DESCRIPTION: | | |
| WIRING DIAGRAM-HOLDING TANKS | | |
| SHEET: | ITEM/PART NO: | REV |
| 1 OF 2 | 000200447 / 30013501000 | |
| REF: | | 1 05-Jun-2018 |

8 7 6 5 4 3 2 1

D

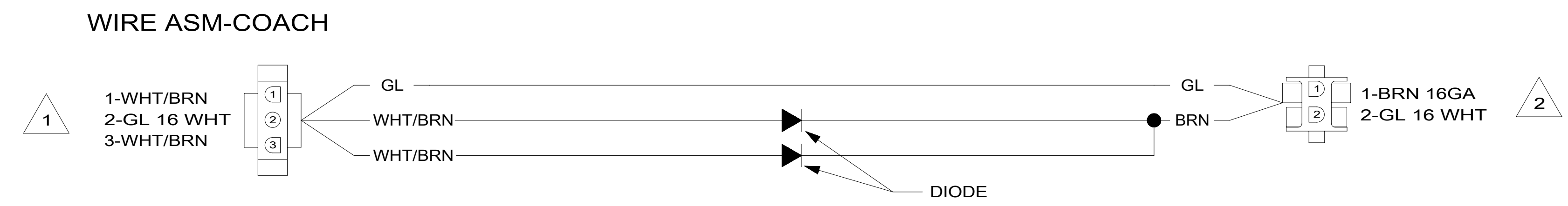
D



WIRING DIAGRAM-TANK,DIODE PACK
151808-01-000 REV A

C

C



WIRING DIAGRAM-TANK,DIODE PACK
151808-02-000 REV A

B

B

- NOTES:**
- 3 CONNECT TO WIRE ASM-TANK,AUX. SEE SHT 1.
 - 2 CONNECT WIRE ASM-TANK,WATER OR MAIN. SEE SHT 1.
 - 1 SEE WIRING DIAGRAM-BODY FOR ADDITIONAL INFORMATION.

| | | |
|---|--|-----|
| DESCRIPTION: WIRING DIAGRAM-HOLDING TANKS | | |
| SHEET: 2 OF 2 | ITEM/PART NO: 000200447 / 30013501000 | REV |

8 7 6 5 4 3 2 1 05-Jun-2018

A

A