

D

D

C

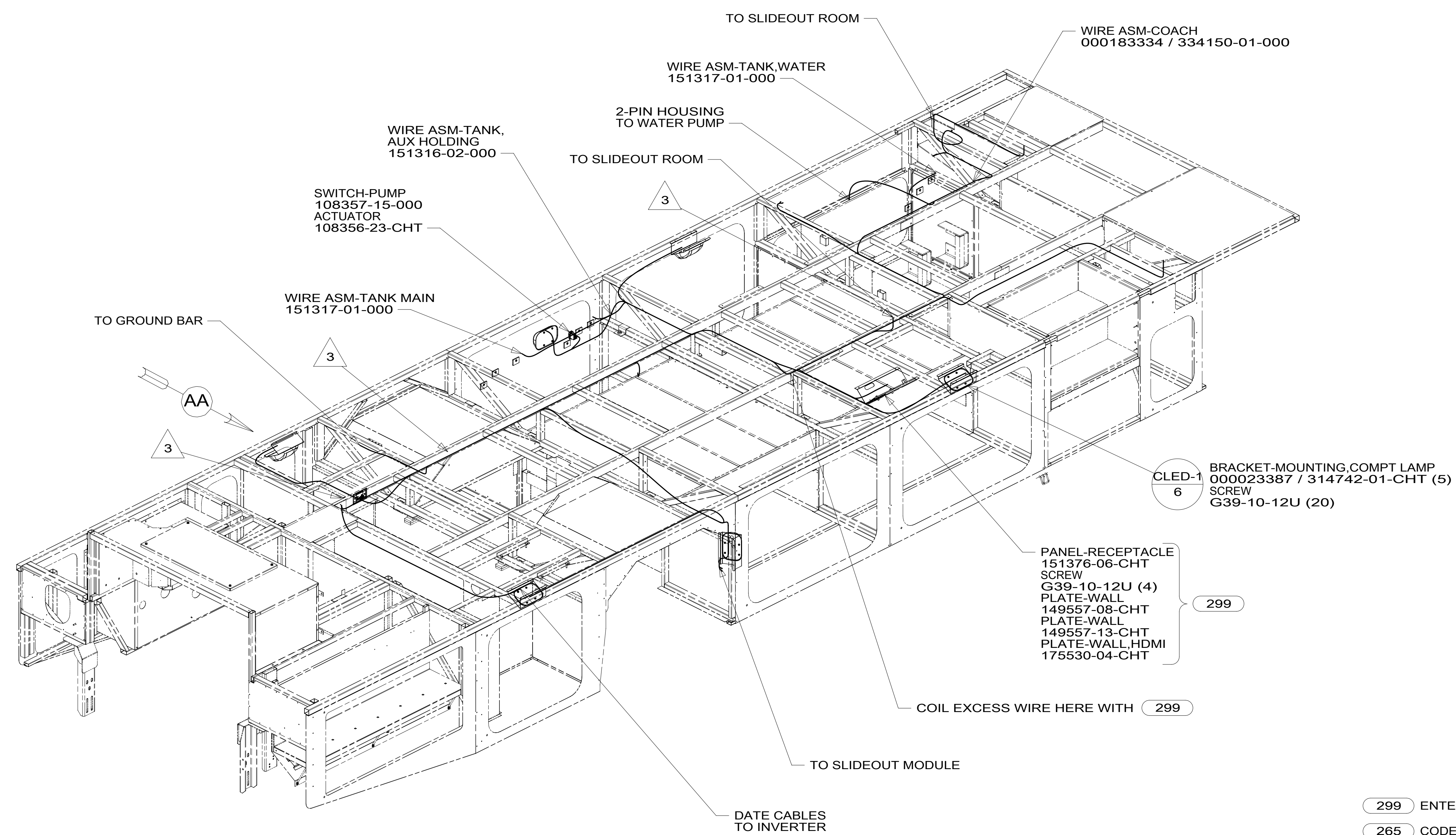
C

B

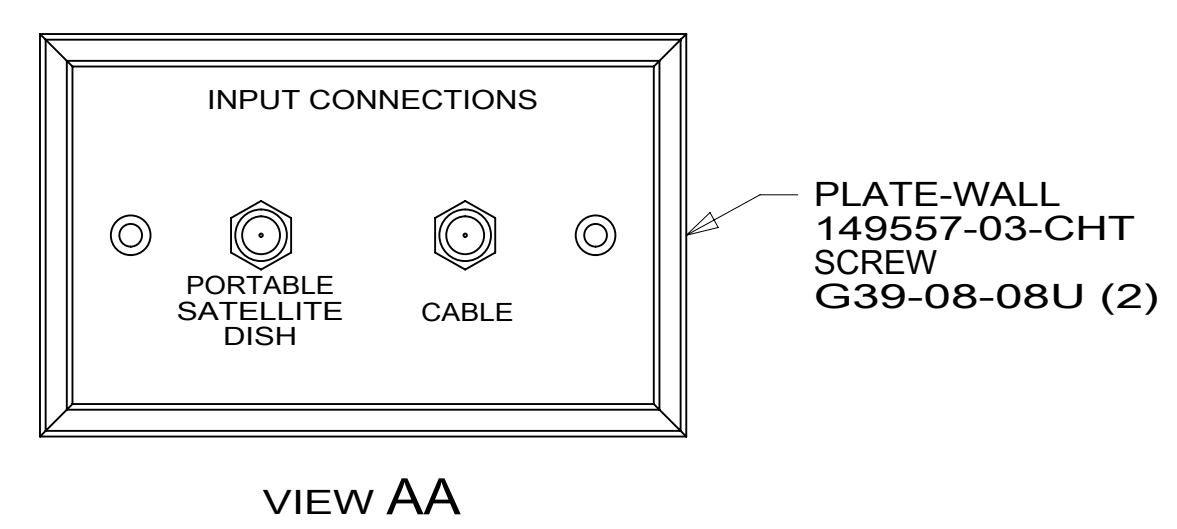
B

A

A



- 3 WIRE PASSES THROUGH FLOOR IN THIS AREA.
2. ROUTE TANK SENSOR WIRES SO THEY DO NOT PASS OVER SENSORS. USE WIRE TIE MOUNT 155366-01-000 AND WIRE TIE 8343-01-000 AS NEEDED. TANK SURFACE MUST BE CLEANED USING ISOPROPYL ALCOHOL AND PRIMED WITH PRIMER 94.
1. AT MINIMUM ALL WIRES TO BE SUPPORTED AND SECURED PER CODE REQUIREMENTS. USE CLAMP 10495 OR 10497 OR WIRE TIE 8343 OR 108046 AND SCREW G67-XX-XXX OR G56-XX-XXX AS APPROPRIATE FOR INSTALLATION.



FOR ELECTRICAL TORQUE SPECIFICATIONS SEE DWG NO. 128783-01-000

FOR ELECTRICAL CALLOUTS SEE DWG NO. 121339-01-000

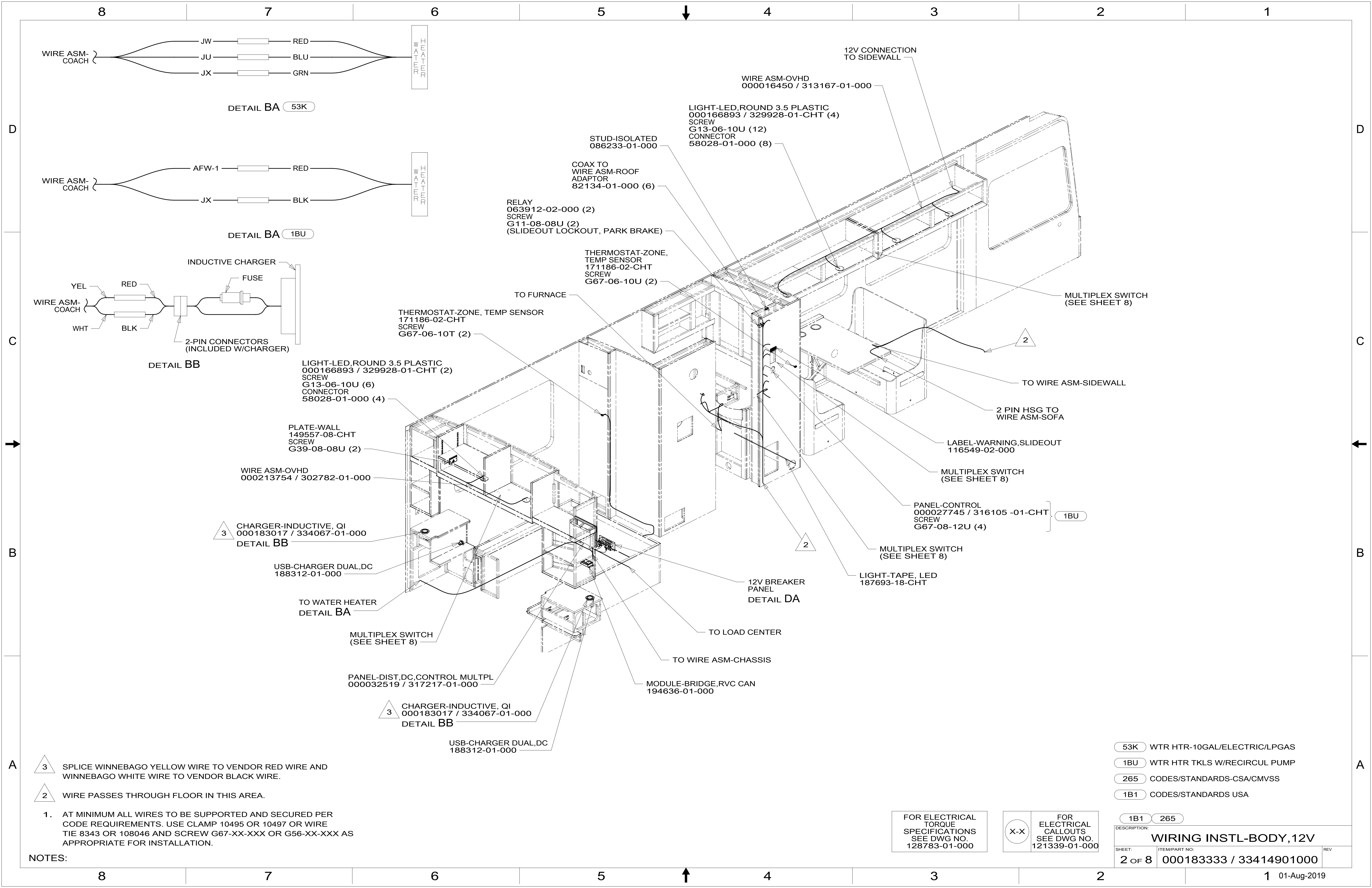
- 299 ENTERTAINMENT CENTER EXT.W/O
- 265 CODES/STANDARDS-CSA/CMVSS
- 1B1 CODES/STANDARDS USA

1B1 265

COPYRIGHT 2016 WINNEBAGO INDUSTRIES, INC.

DSNR:		ALL DIMENSIONS ARE IN MILLIMETERS	
DFFR:		MATERIAL:	
UNSPECIFIED TOLERANCES:			
WHOLE DIM (X)	3		
ONE-PLACE (X.X)	1.5		
TWO-PLACE (X.XX)	0.50		
ANGLE	1°		
REFER TO ES0018 FOR FASTENER TIGHTENING GUIDELINES	WEIGHT: (LBS)	FIRST USED:	19 L34T
DESCRIPTION: <b>WIRING INSTL-BODY, 12V</b>			
SHEET: 1 OF 8	ITEM/PART NO: 000183333 / 33414901000	REV:	

REF: 1 01-Aug-2019

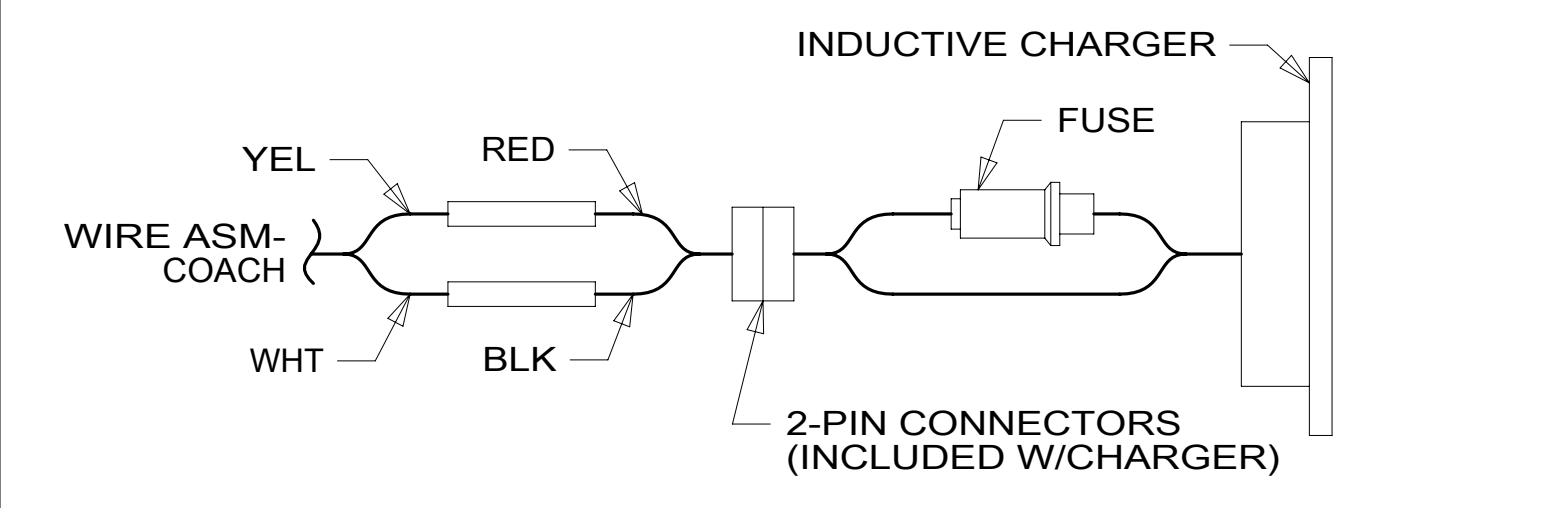


WIRE ASM-COACH } JW --- RED  
 WIRE ASM-COACH } JU --- BLU  
 WIRE ASM-COACH } JX --- GRN

DETAIL BA 53K

WIRE ASM-COACH } AFW-1 --- RED  
 WIRE ASM-COACH } JX --- BLK

DETAIL BA 1BU



DETAIL BB

3 SPLICE WINNEBAGO YELLOW WIRE TO VENDOR RED WIRE AND WINNEBAGO WHITE WIRE TO VENDOR BLACK WIRE.

2 WIRE PASSES THROUGH FLOOR IN THIS AREA.

1. AT MINIMUM ALL WIRES TO BE SUPPORTED AND SECURED PER CODE REQUIREMENTS. USE CLAMP 10495 OR 10497 OR WIRE TIE 8343 OR 108046 AND SCREW G67-XX-XXX OR G56-XX-XXX AS APPROPRIATE FOR INSTALLATION.

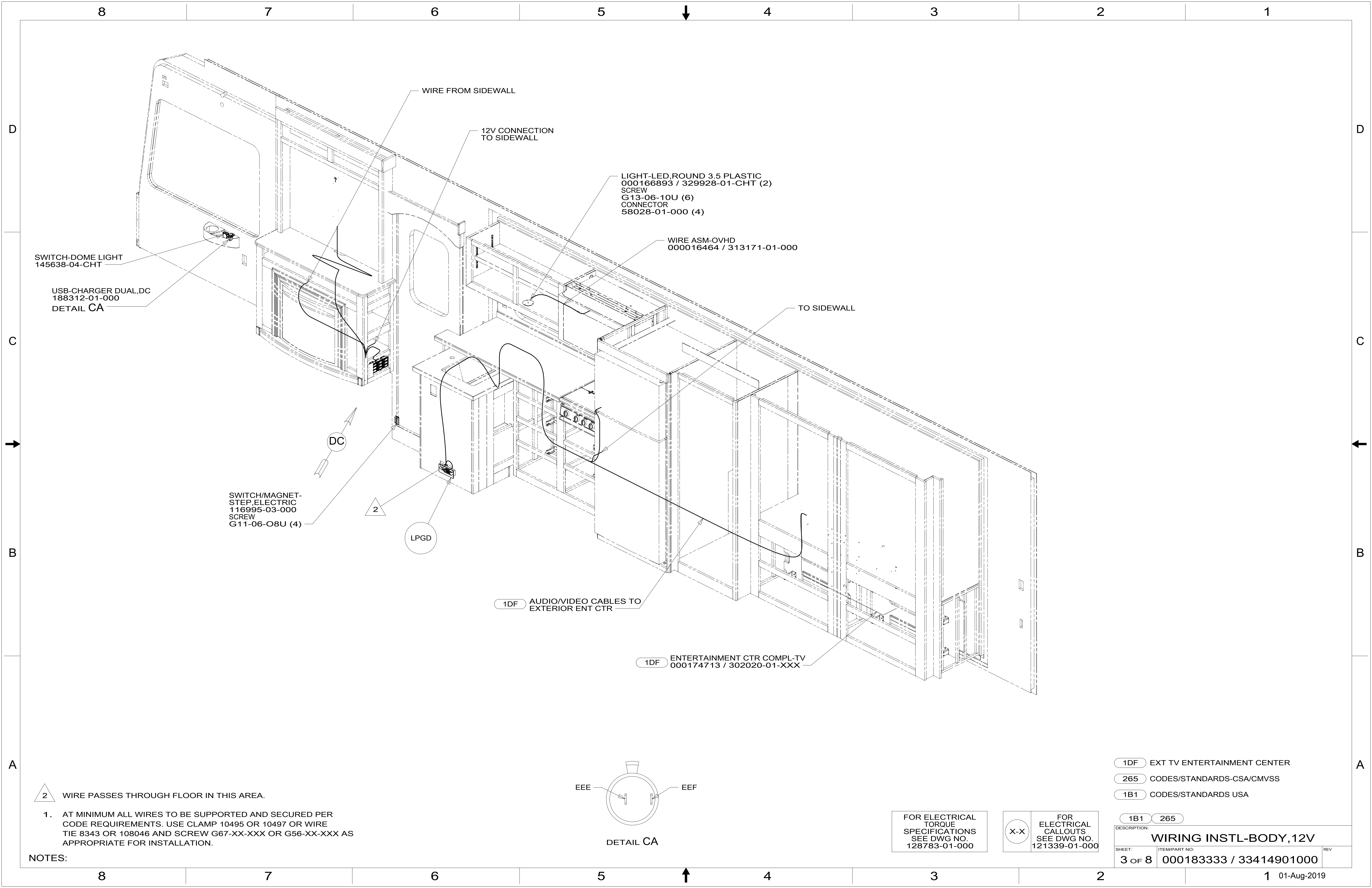
NOTES:

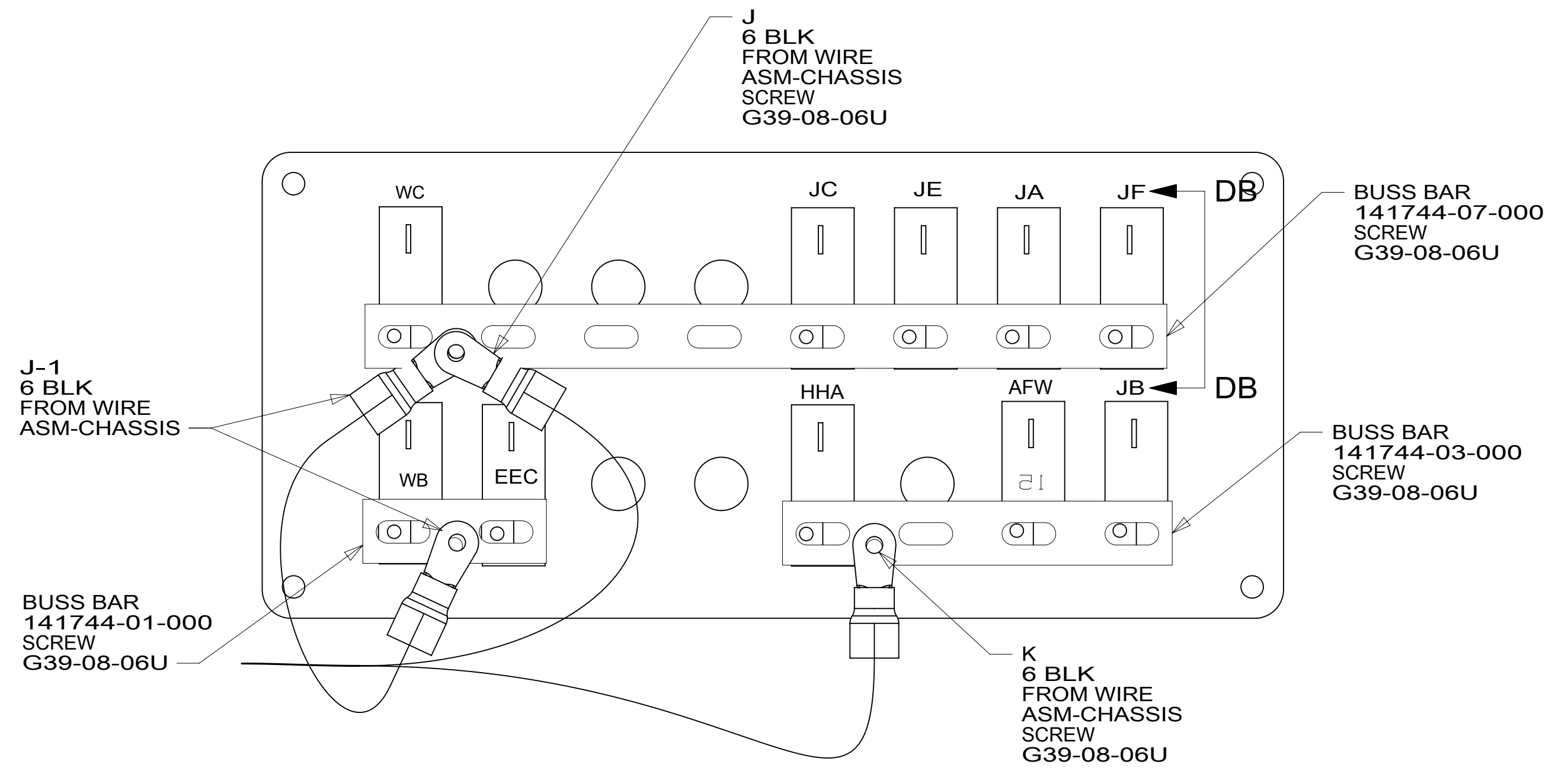
- 53K WTR HTR-10GAL/ELECTRIC/LPGAS
- 1BU WTR HTR TKLS W/RECIRCUL PUMP
- 265 CODES/STANDARDS-CSA/CMVSS
- 1B1 CODES/STANDARDS USA

FOR ELECTRICAL TORQUE SPECIFICATIONS SEE DWG NO. 128783-01-000

FOR ELECTRICAL CALLOUTS SEE DWG NO. 121339-01-000

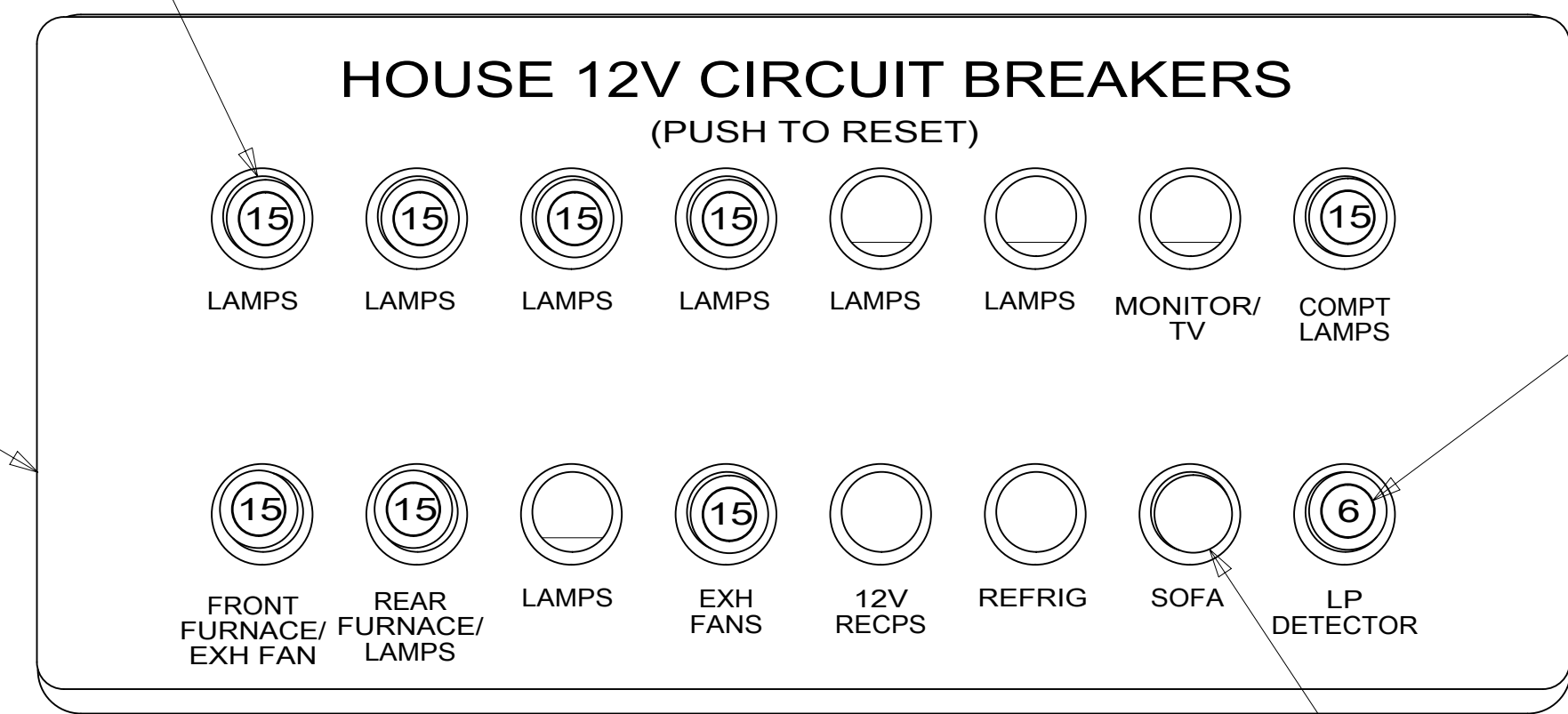
DESCRIPTION:		1B1 265	
<b>WIRING INSTL-BODY, 12V</b>			
SHEET:	ITEM/PART NO.:	REV:	
2 OF 8	000183333 / 33414901000		





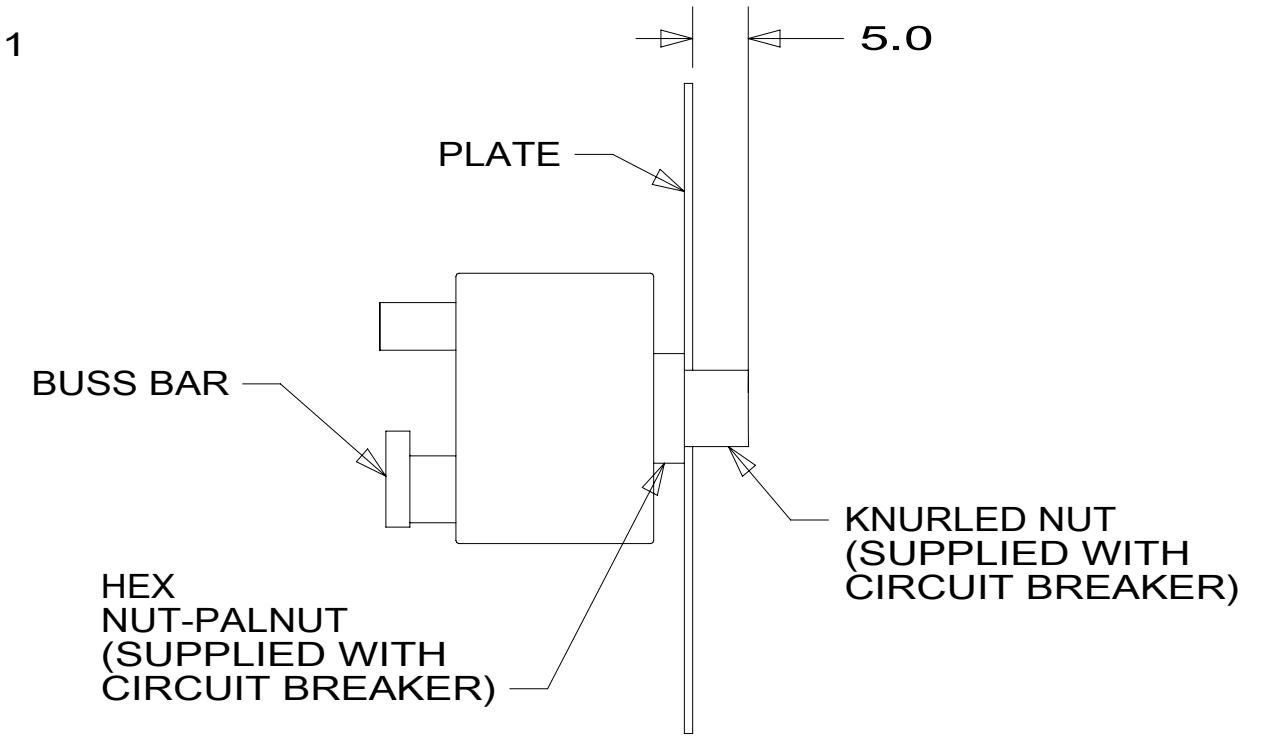
DETAIL DA  
(BACK VIEW)

CIRCUIT BREAKER  
93654-02-000 (8)  
(15 AMP)  
SCREW  
G52-06-04U (8)  
WASHER  
OME02U-04-071 (8)

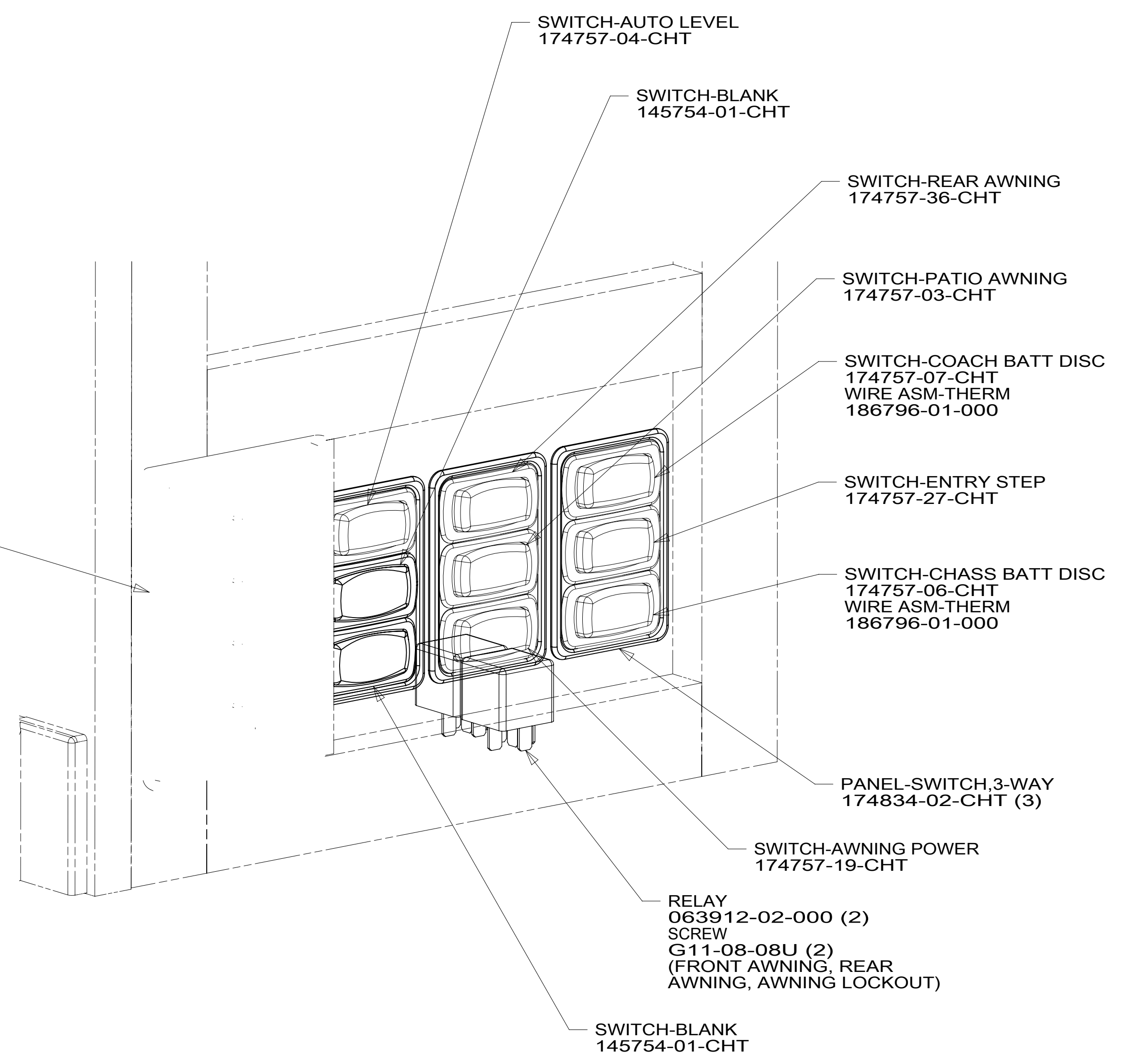


DETAIL DA  
(FRONT VIEW)

CIRCUIT BREAKER  
182283-01-000  
(20 AMP)  
SCREW  
G52-06-04U  
WASHER  
OME02U-04-071



VIEW DB-DB



DETAIL DC

FOR ELECTRICAL  
TORQUE  
SPECIFICATIONS  
SEE DWG NO.  
128783-01-000

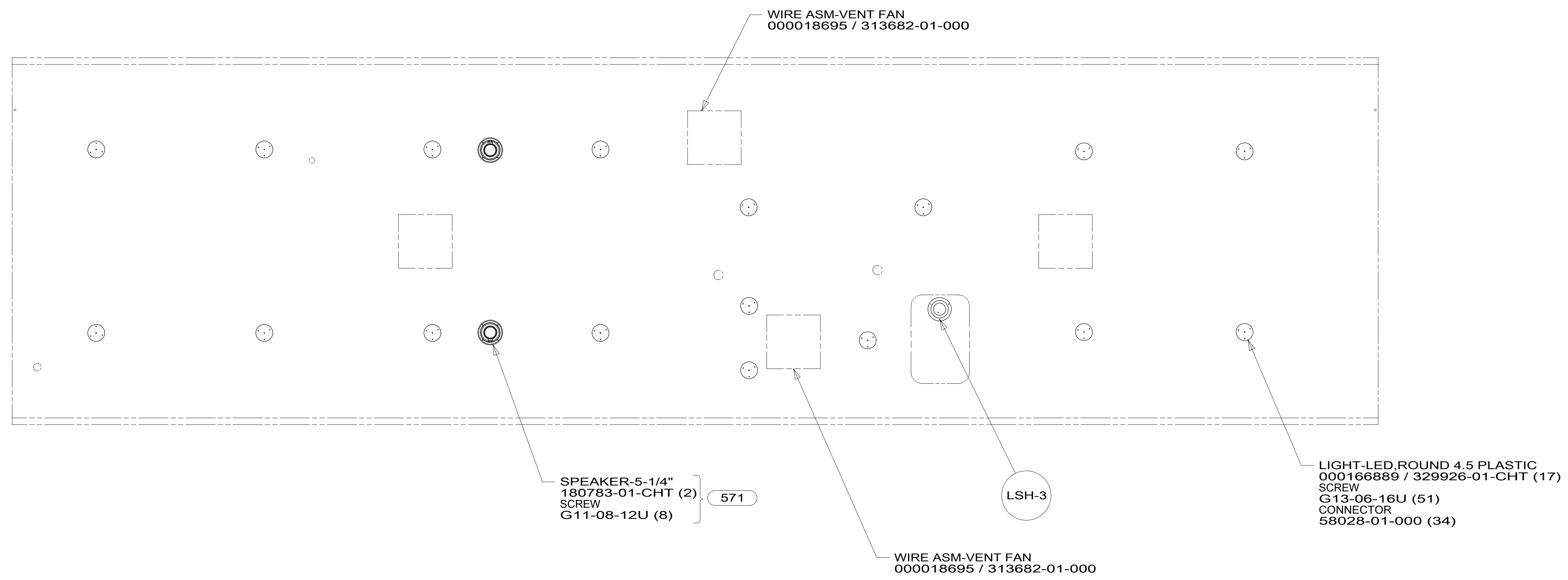
FOR ELECTRICAL  
CALLOUTS  
SEE DWG NO.  
121339-01-000

- 265 CODES/STANDARDS-CSA/CMVSS
- 1B1 CODES/STANDARDS USA

DESCRIPTION: <b>WIRING INSTL-BODY, 12V</b>	
SHEET: <b>4 OF 8</b>	ITEM/PART NO.: <b>000183333 / 33414901000</b>
REV	

8 7 6 5 4 3 2 1

D  
C  
B  
A



WIRE ASM-VENT FAN  
000018695 / 313682-01-000

SPEAKER-5-1/4"  
180783-01-CHT (2)  
SCREW  
G11-08-12U (8) } 571

WIRE ASM-VENT FAN  
000018695 / 313682-01-000

LSH-3

LIGHT-LED,ROUND 4.5 PLASTIC  
000166889 / 329926-01-CHT (17)  
SCREW  
G13-06-16U (51)  
CONNECTOR  
58028-01-000 (34)

- 571 RADIO SPEAKERS
- 265 CODES/STANDARDS-CSA/CMVSS
- 1B1 CODES/STANDARDS USA

FOR ELECTRICAL  
TORQUE  
SPECIFICATIONS  
SEE DWG NO.  
128783-01-000

FOR  
ELECTRICAL  
CALLOUTS  
SEE DWG NO.  
121339-01-000

DESCRIPTION:	1B1 265	
<b>WIRING INSTL-BODY, 12V</b>		
SHEET:	ITEM/PART NO:	REV
5 OF 8	000183333 / 33414901000	

8 7 6 5 4 3 2 1 01-Aug-2019

8

7

6

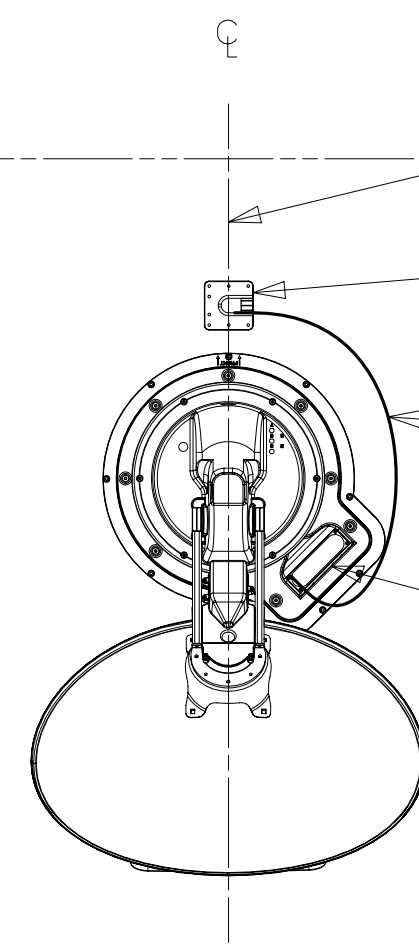
5

4

3

2

1



DETAIL FA

THE SATELLITE DISH AND WIRE CONNECTIONS ARE TO BE PLACED ON THE CENTERLINE OF THE MOTORHOME FACING FORWARD.

SEPARATE CABLES AND INSTALL WIRE COVER OVER HOLE IN ROOF ASM WITH CABLES EXITING ON PASSENGERS SIDE.

WHEN APPLYING ROOF SEALANT TO SATELLITE DISH, PLACE ROOF SEALANT HERE (APPROX. 75MM WIDE) AND PUSH THE CABLES INTO THE SEALANT TO STABILIZE THEM.

CONNECT CABLE ASM-COAX FROM ROOF ASM TO COAX CABLES ON SATELLITE DISH AND CONNECT 10' CABLE-DATA FROM ROOF ASM TO DATA CABLE FROM SATELLITE DISH AND PLACE ALL CONNECTIONS BACK INTO ROOF ASM.

ANTENNA-SATELLITE  
 000169776 / 330860-01-000  
 SCREW  
 G39-08-12U (9)  
 (FOR SATELLITE DISH)  
 G67-10-12U (8)  
 (FOR ENTRY PLATE SUPPLIED WITH DISH)

789

787

DA-4

1  
DETAIL FA

RED-GR  
BLK-HHB

RED-KJ  
BLK-HHB

ANTENNA-TV, OMNIDIRECTIONAL  
 000171487 / 331386-01-CHT  
 SCREW  
 G67-10-16U (4)

1

789 SAT ANT, AUTO DISH NETWORK

787 SAT TV ANT, AUTO DIRECTV

265 CODES/STANDARDS-CSA/CMVSS

1B1 CODES/STANDARDS USA

1B1 265

FOR ELECTRICAL  
 TORQUE  
 SPECIFICATIONS  
 SEE DWG NO.  
 128783-01-000

FOR ELECTRICAL  
 CALLOUTS  
 SEE DWG NO.  
 121339-01-000

DESCRIPTION:  
WIRING INSTL-BODY, 12V

SHEET: 6 OF 8  
 ITEM/PART NO.: 000183333 / 33414901000  
 REV

1 SEE MANUFACTURER'S INSTALLATION FOR  
 ADDITIONAL INFORMATION.

NOTES:

8

7

6

5

4

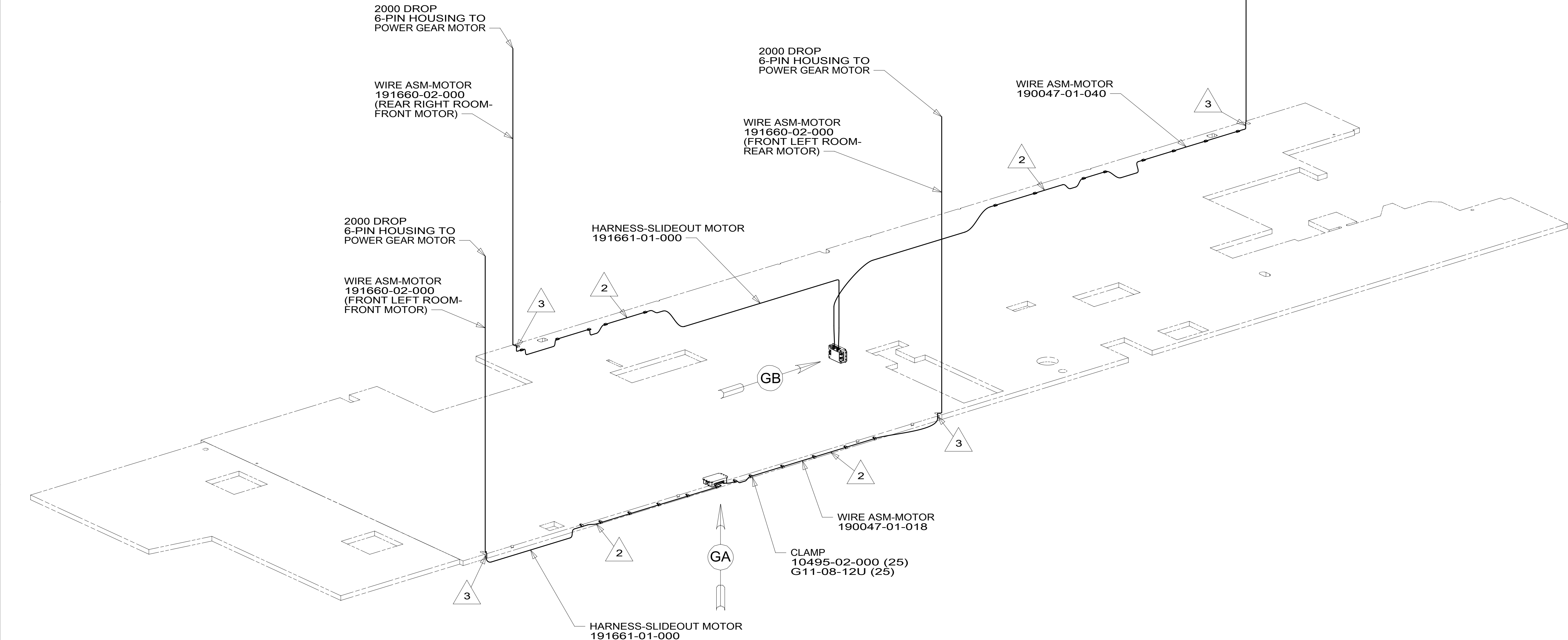
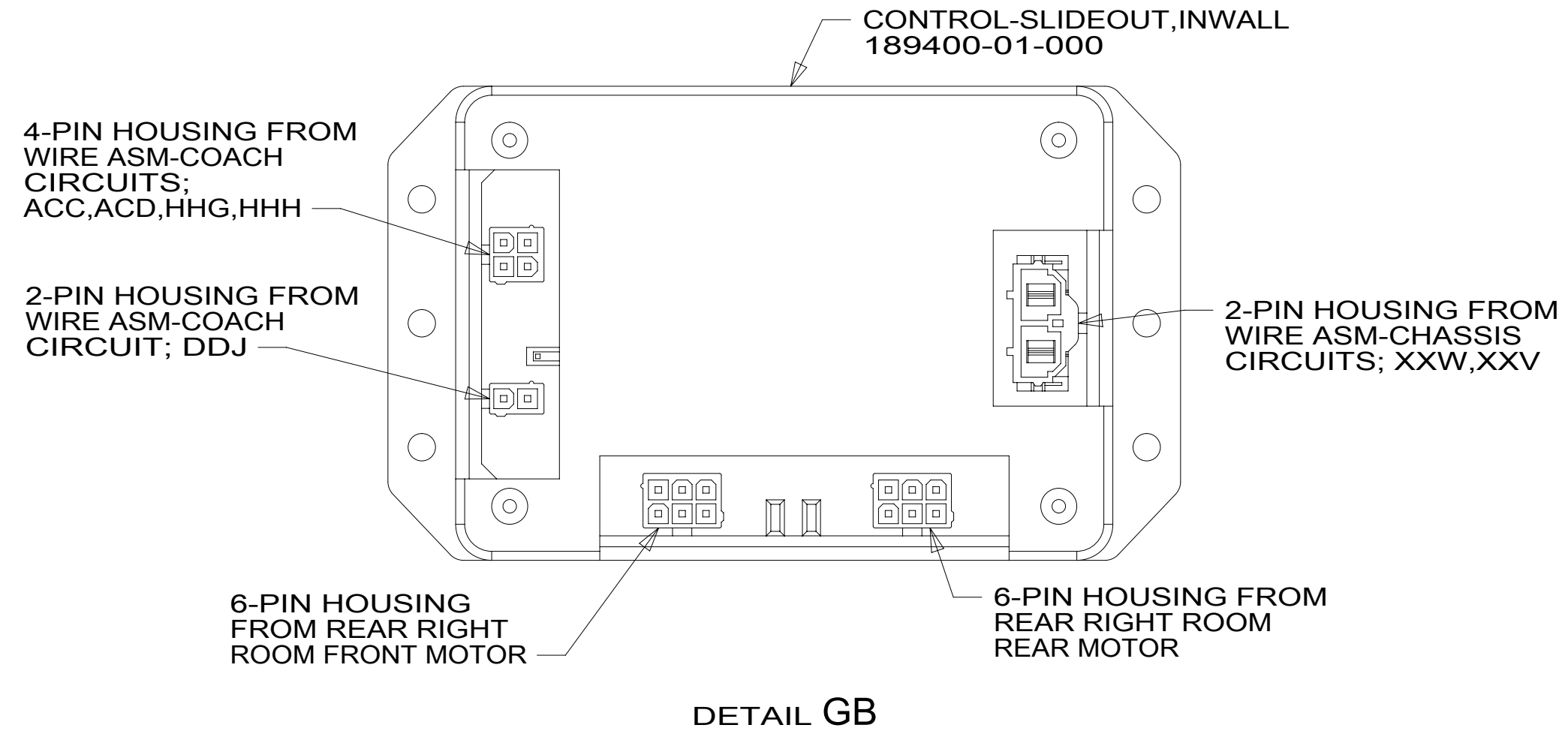
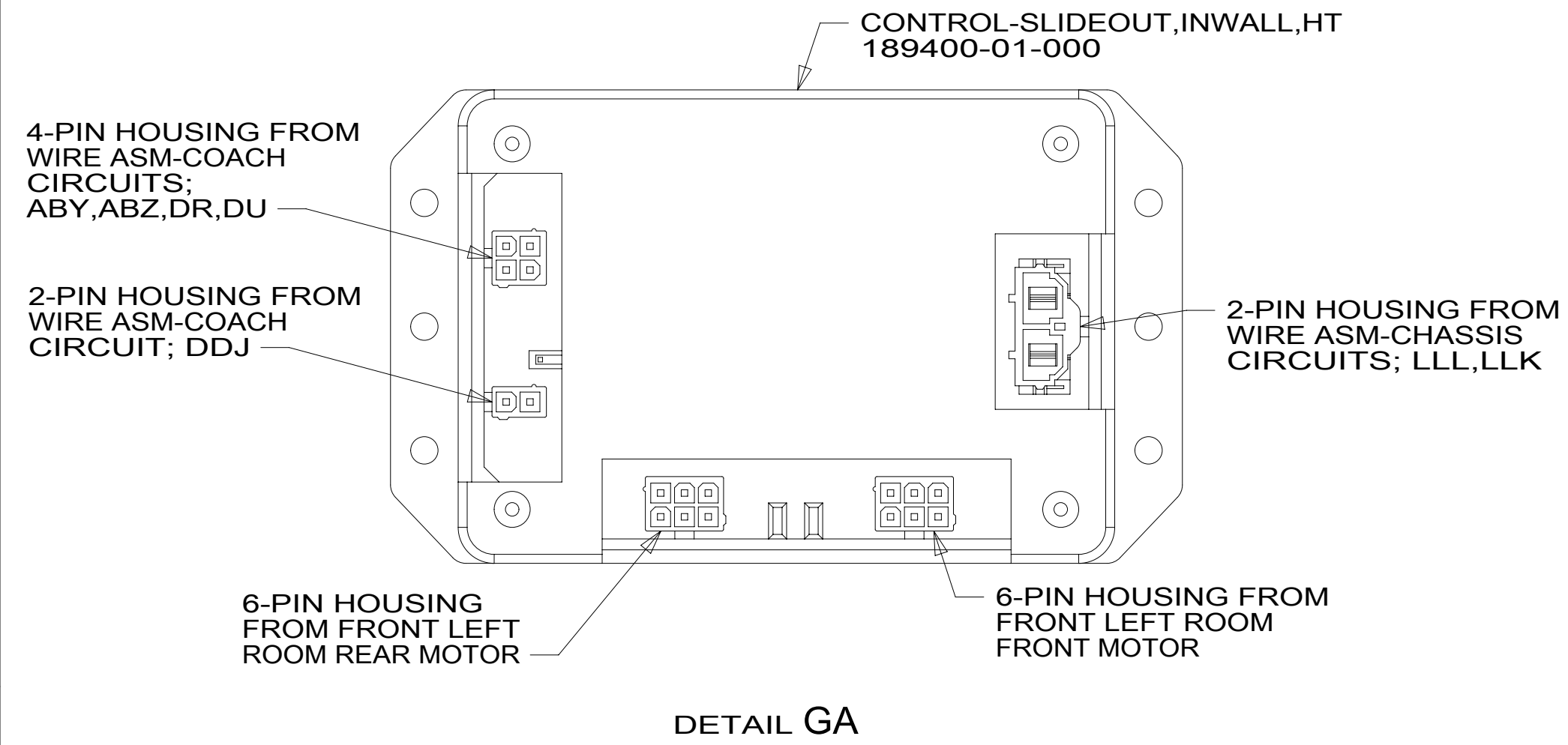
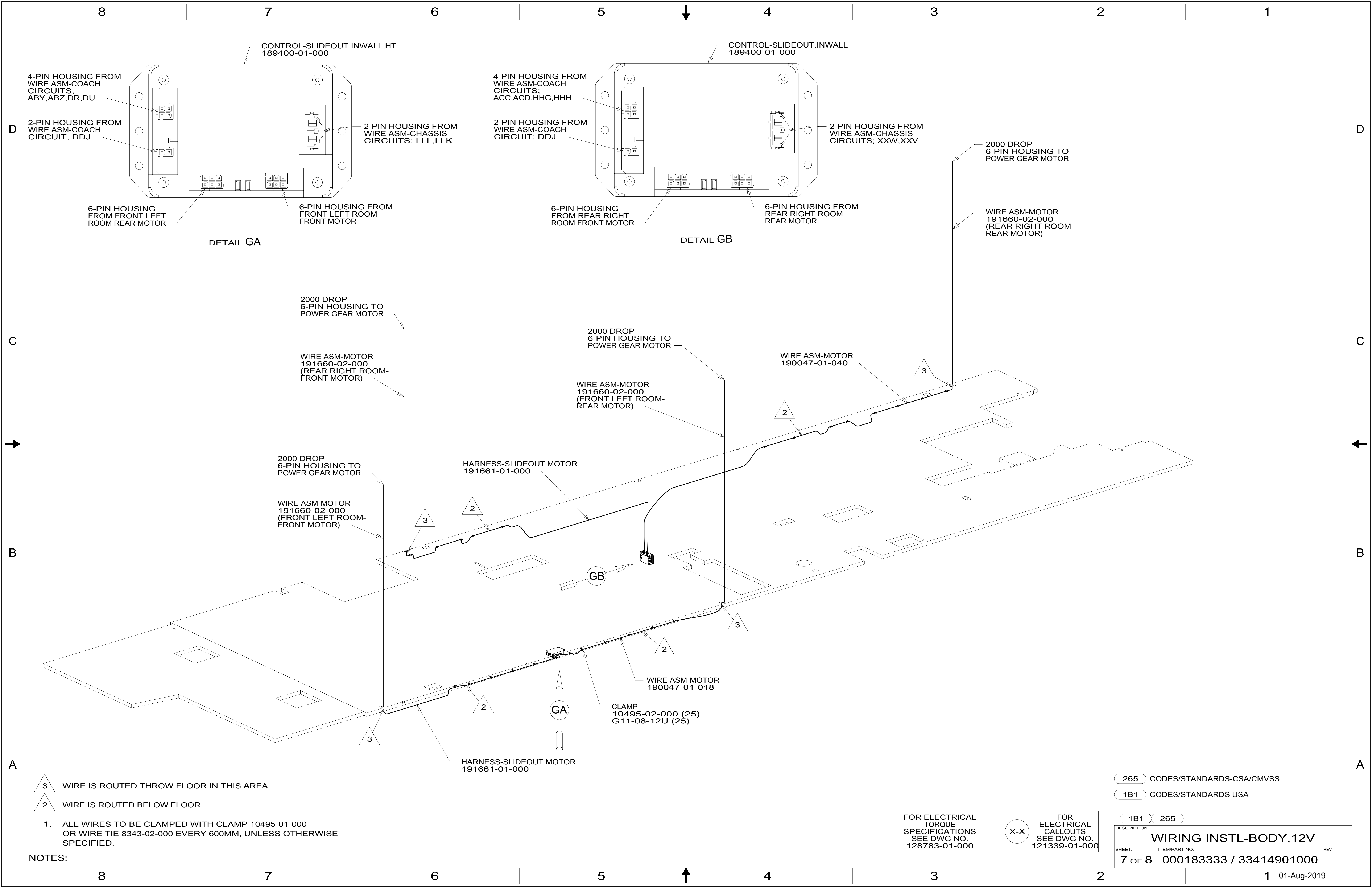
3

2

1

01-Aug-2019





- 3 WIRE IS ROUTED THROU FLOOR IN THIS AREA.
- 2 WIRE IS ROUTED BELOW FLOOR.

1. ALL WIRES TO BE CLAMPED WITH CLAMP 10495-01-000 OR WIRE TIE 8343-02-000 EVERY 600MM, UNLESS OTHERWISE SPECIFIED.

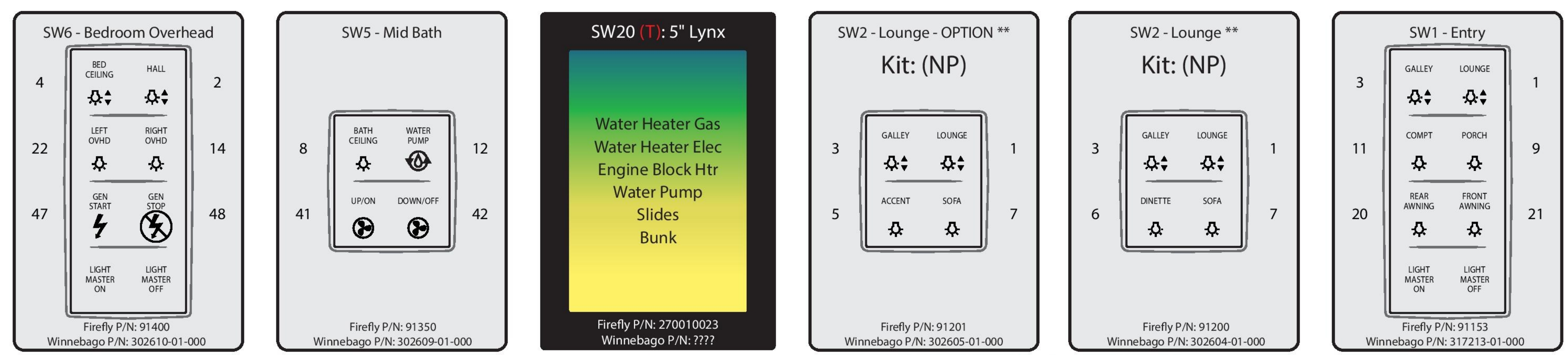
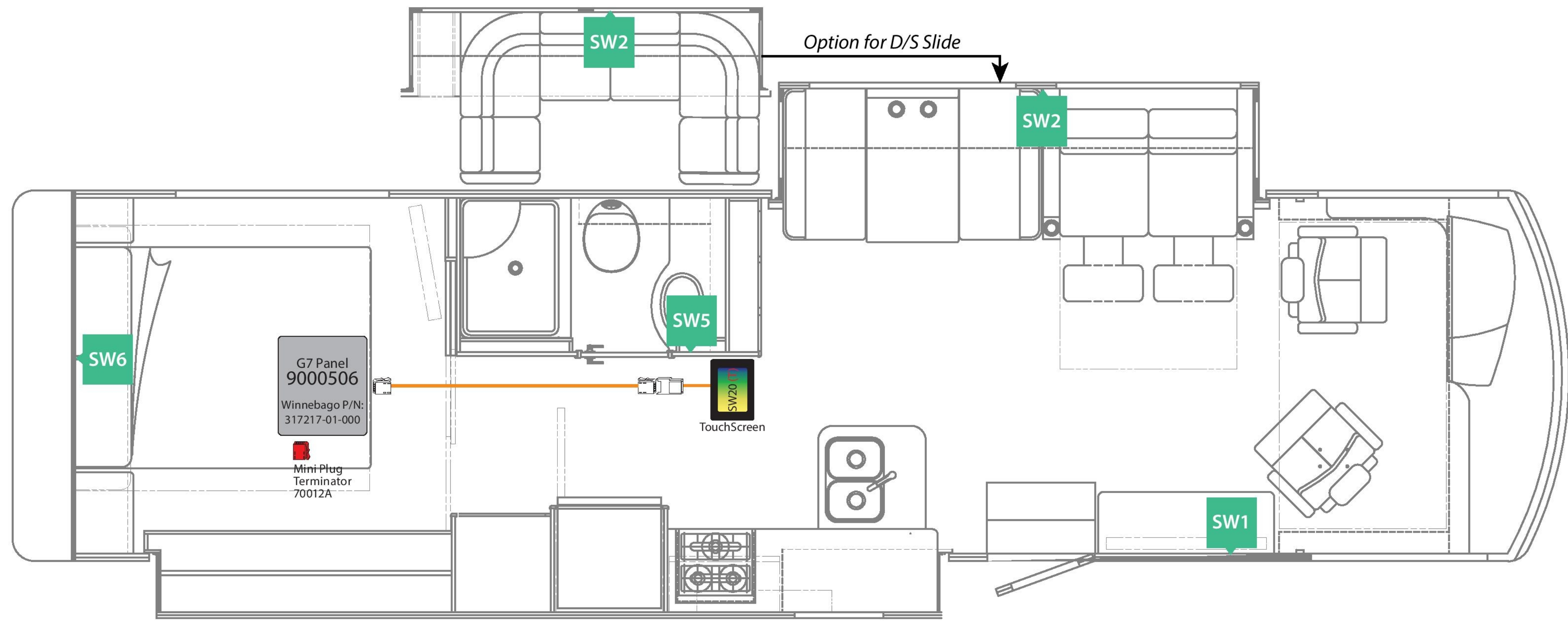
NOTES:

265 CODES/STANDARDS-CSA/CMVSS  
1B1 CODES/STANDARDS USA

FOR ELECTRICAL TORQUE SPECIFICATIONS SEE DWG NO. 128783-01-000

FOR ELECTRICAL CALLOUTS SEE DWG NO. 121339-01-000

DESCRIPTION:	
<b>WIRING INSTL-BODY, 12V</b>	
SHEET:	ITEM/PART NO:
7 OF 8	000183333 / 33414901000
REV	



\*\* Each kit will include only one of the SW2 options

L34T KIT\*: Firefly P/N: 270000008A  
 L34T Winnebago P/N: 335076-01-000  
 L34T OPTION KIT\*: Firefly P/N: 270000009A  
 L34T OPTION Winnebago P/N: ????  
 \* Kits may not include all components shown on print.

<b>WINNEBAGO - L34T - V4</b>			DI: AD/MD	<b>Network Legend</b>	
Network Wiring Diagram and Switch Panel Layout			PI: TB	Trunk Cable Drop Cable Switch Position	
SSP-17 RF / Lynx	NWD REV 4v1	04/19/19			

NOTES:  
 1. USE KIT # 000186548 / 335076-01-000.

FOR ELECTRICAL TORQUE SPECIFICATIONS SEE DWG NO. 128783-01-000

FOR ELECTRICAL CALLOUTS SEE DWG NO. 121339-01-000

265	CODES/STANDARDS-CSA/CMVSS
1B1	CODES/STANDARDS USA
1B1	265
DESCRIPTION: <b>WIRING INSTL-BODY, 12V</b>	
SHEET: 8 OF 8	ITEM/PART NO: 000183333 / 33414901000
REV	