

8

7

6

5

4

3

2

1



D

D

C

C

B

B

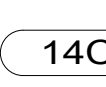
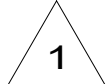
A

A

RED	1B1	136135-07-081
	265	136136-07-081
GRN	1B1	136135-08-081
	265	136136-08-081
YEL	1B1	136131-05-058
	265	136134-05-058
GLD	1B1	136131-10-083
	265	136134-10-083
GLD-2	1B1	136131-20-065
	265	136134-20-065
BLU	1B1	136131-02-113
	265	136134-02-113
BRN	1B1	136131-03-200
	265	136134-03-200
PUR	1B1	136131-04-090
	265	136134-04-090



ORG	1B1	136131-16-028
	265	136134-16-028
BLK	1B1	136131-06-058
	265	136134-06-058
GRY	1B1	136131-15-065
	265	136134-15-065
INVERTER CHARGER MAIN	1B1	136137-01-040
	265	136138-01-040
INVERTER CHARGER SUB MAIN	1B1	136137-01-040
	265	136138-01-040
CABLE ASM-MAIN,6 AWG		176841-01-034
MAIN GROUND		136145-01-025
ATS GROUND		136145-01-020
INVERTER GROUND		136145-04-022
GENERATOR CABLE ASM		136148-02-109



- 14C FIREPLACE-ELECTRIC
- 265 CODES/STANDARDS-CSA/CMVSS
- 1B1 CODES/STANDARDS USA

- 1B1 265

**WINNEBAGO**  
COPYRIGHT 2016 WINNEBAGO INDUSTRIES, INC.

DSNR:		ALL DIMENSIONS ARE IN MILLIMETERS	
DFFR:		MATERIAL:	
UNSPECIFIED TOLERANCES:			
WHOLE DIM (X)	: 3		
ONE-PLACE (X.X)	: 1.5		
TWO-PLACE (X.XX)	: 0.50		
ANGLE	: 1°		
REFER TO ES0018 FOR FASTENER TIGHTENING GUIDELINES		WEIGHT: (LBS)	FIRST USED:
			17 L38W
<b>LOAD CENTER/ATS ASM</b>			
SHEET:	ITEM/PART NO.:	REV:	
1 OF 4	000181272 / 30129101000		

FOR ELECTRICAL TORQUE SPECIFICATIONS SEE DWG NO. 128783-01-000

FOR ELECTRICAL CALLOUTS SEE DWG NO. 121339-01-000

NOTES:  
1 SEE DETAIL BA FOR CONNECTOR INSTALLATION.

8

7

6

5

4

3

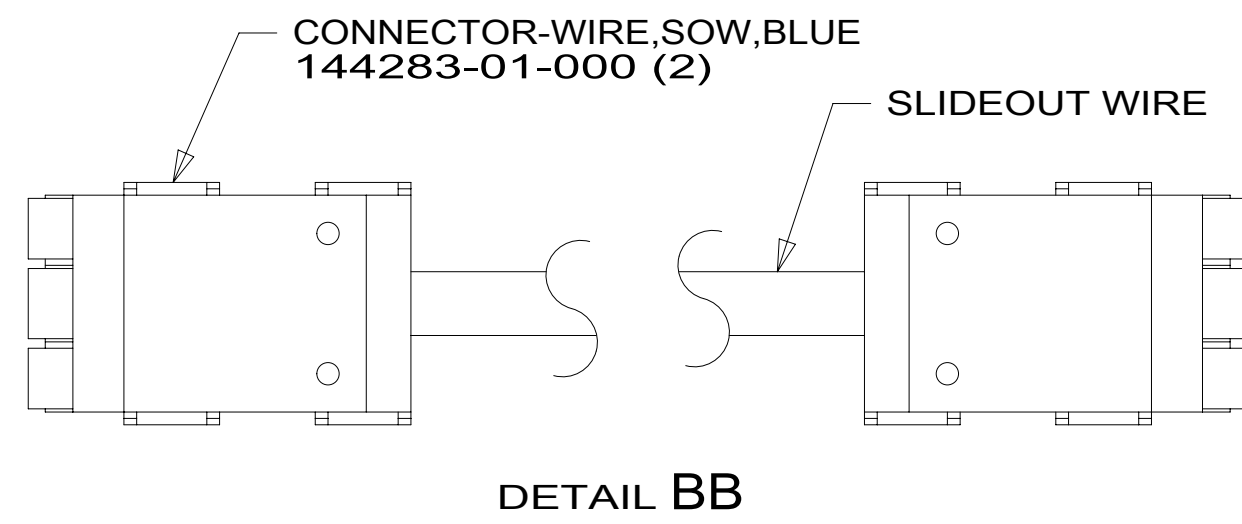
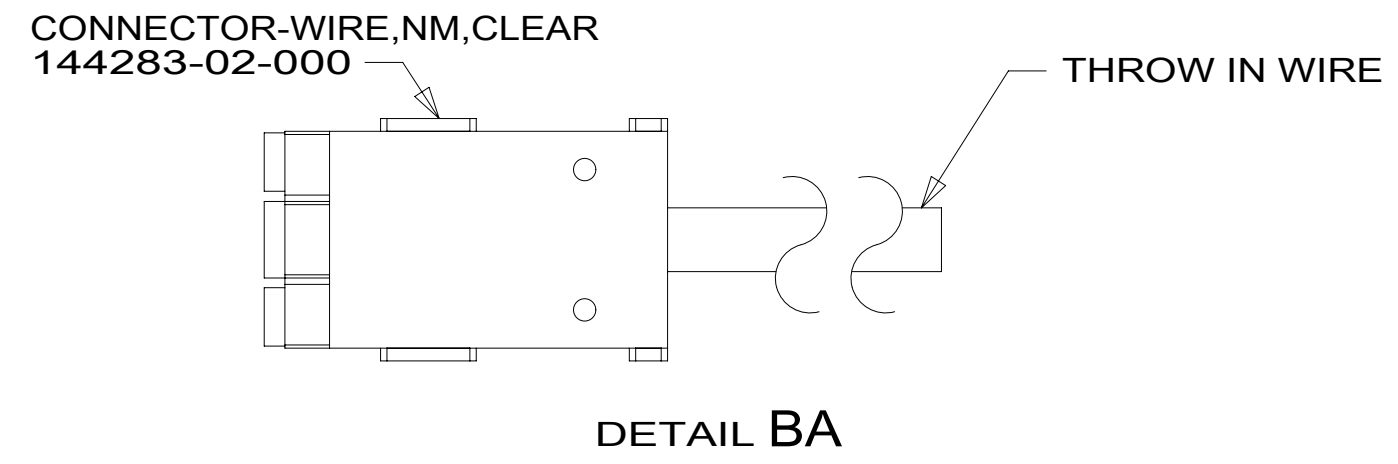
2

1

19-Feb-2021

THROW IN WIRE #1	1B1	136131-02-055	1
	265	136134-02-055	1
THROW IN WIRE #2	1B1	136131-04-090	
	265	136134-04-090	
THROW IN WIRE #3	1B1	136131-02-003	1
	265	136134-02-003	1
THROW IN WIRE #4	1B1	136131-02-075	1
	265	136134-02-075	1
THROW IN WIRE #5	1B1	136131-02-056	1
	265	136134-02-056	1

SLIDEOUT WIRE #1	136151-02-014	2
SLIDEOUT WIRE #2	136151-03-028	2
SLIDEOUT WIRE #3	136151-02-028	2 1DF
SLIDEOUT WIRE #4	136151-06-022	2
SLIDEOUT WIRE #5	136151-05-022	2
SLIDEOUT WIRE #6	136151-02-022	2



- 1DF EXT TV ENTERTAINMENT CENTER
- 265 CODES/STANDARDS-CSA/CMVSS
- 1B1 CODES/STANDARDS USA

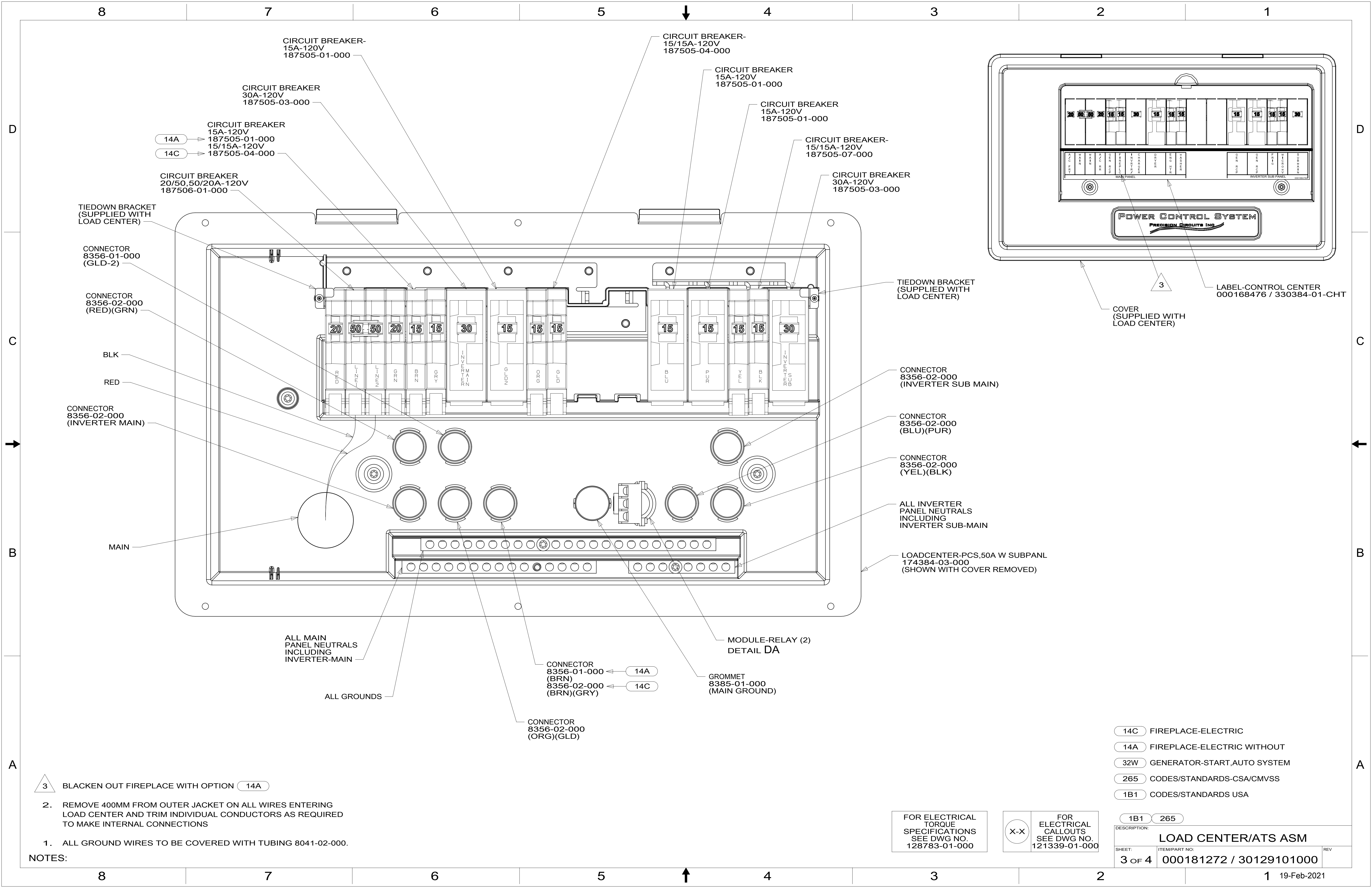
2 SEE DETAIL BB FOR CONNECTOR INSTALLATION.  
1 SEE DETAIL BA FOR CONNECTOR INSTALLATION.

NOTES:

FOR ELECTRICAL TORQUE SPECIFICATIONS SEE DWG NO. 128783-01-000

FOR ELECTRICAL CALLOUTS SEE DWG NO. 121339-01-000

DESCRIPTION:	1B1 265	
<b>LOAD CENTER/ATS ASM</b>		
SHEET:	ITEM/PART NO:	REV
2 OF 4	000181272 / 30129101000	



CIRCUIT BREAKER-15A-120V 187505-01-000

CIRCUIT BREAKER 30A-120V 187505-03-000

CIRCUIT BREAKER 15A-120V 187505-01-000

CIRCUIT BREAKER 15/15A-120V 187505-04-000

CIRCUIT BREAKER 15A-120V 187505-01-000

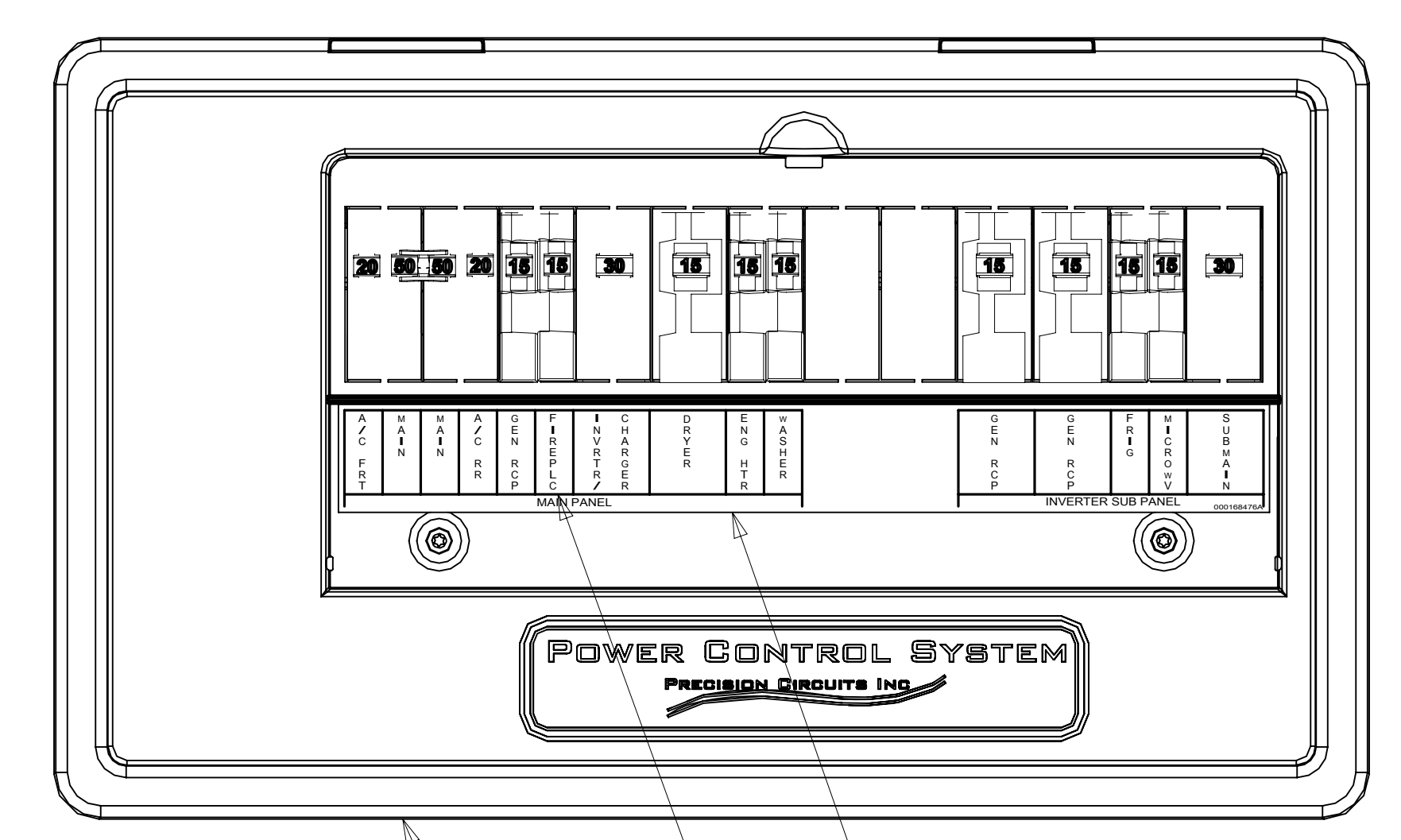
CIRCUIT BREAKER 15/15A-120V 187505-07-000

CIRCUIT BREAKER 30A-120V 187505-03-000

CIRCUIT BREAKER 20/50,50/20A-120V 187506-01-000

14A → CIRCUIT BREAKER 15A-120V 187505-01-000

14C → CIRCUIT BREAKER 15/15A-120V 187505-04-000



TIEDOWN BRACKET (SUPPLIED WITH LOAD CENTER)

CONNECTOR 8356-01-000 (GLD-2)

CONNECTOR 8356-02-000 (RED)(GRN)

BLK

RED

CONNECTOR 8356-02-000 (INVERTER MAIN)

MAIN

TIEDOWN BRACKET (SUPPLIED WITH LOAD CENTER)

CONNECTOR 8356-02-000 (INVERTER SUB MAIN)

CONNECTOR 8356-02-000 (BLU)(PUR)

CONNECTOR 8356-02-000 (YEL)(BLK)

ALL INVERTER PANEL NEUTRALS INCLUDING INVERTER SUB-MAIN

LOADCENTER-PCS,50A W SUBPANL 174384-03-000 (SHOWN WITH COVER REMOVED)

ALL MAIN PANEL NEUTRALS INCLUDING INVERTER-MAIN

ALL GROUNDS

CONNECTOR 8356-01-000 (BRN) 14A

CONNECTOR 8356-02-000 (BRN)(GRY) 14C

CONNECTOR 8356-02-000 (ORG)(GLD)

MODULE-RELAY (2) DETAIL DA

GROMMET 8385-01-000 (MAIN GROUND)

COVER (SUPPLIED WITH LOAD CENTER)

LABEL-CONTROL CENTER 000168476 / 330384-01-CHT

3 BLACKEN OUT FIREPLACE WITH OPTION 14A

2. REMOVE 400MM FROM OUTER JACKET ON ALL WIRES ENTERING LOAD CENTER AND TRIM INDIVIDUAL CONDUCTORS AS REQUIRED TO MAKE INTERNAL CONNECTIONS

1. ALL GROUND WIRES TO BE COVERED WITH TUBING 8041-02-000.

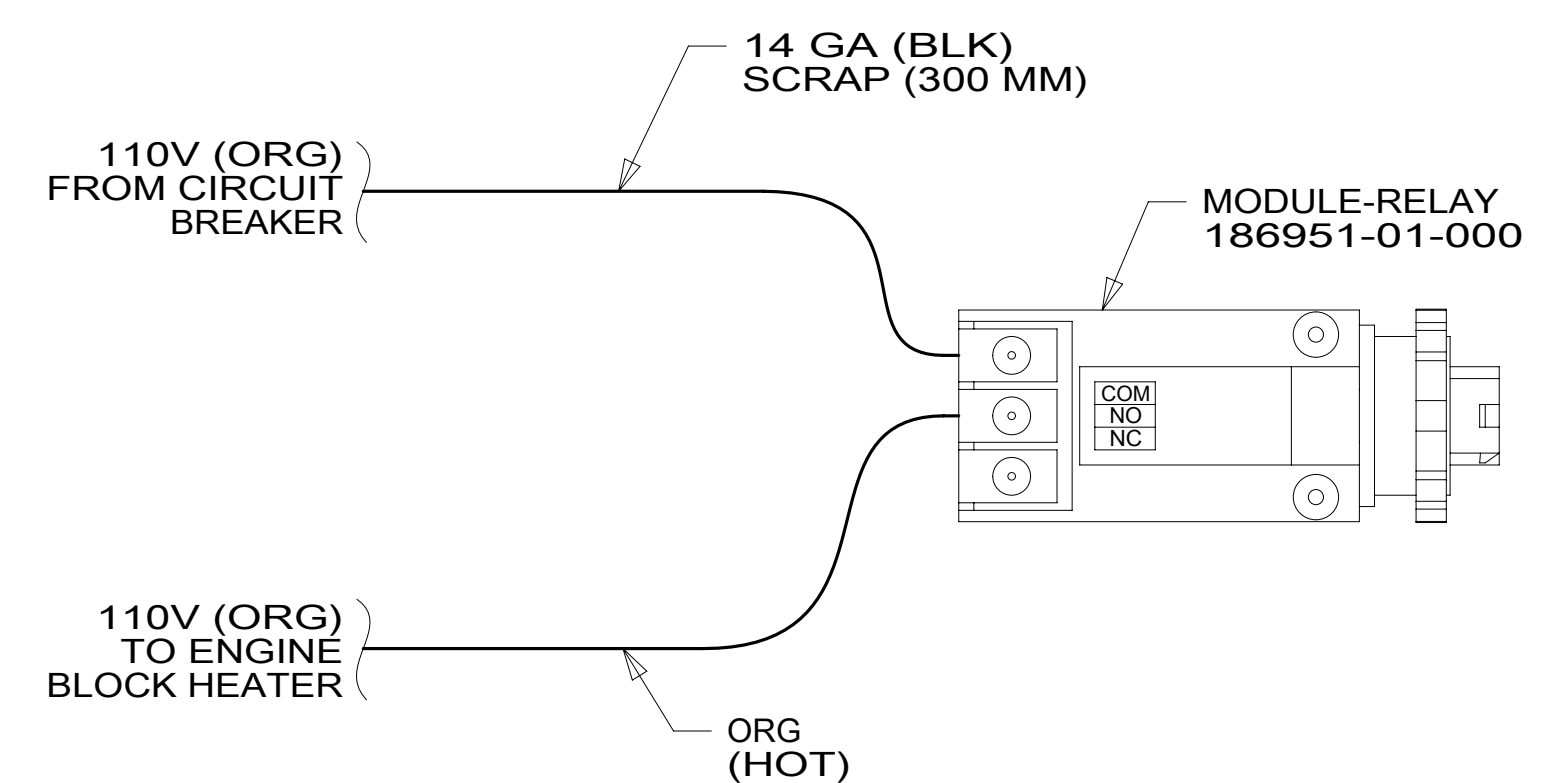
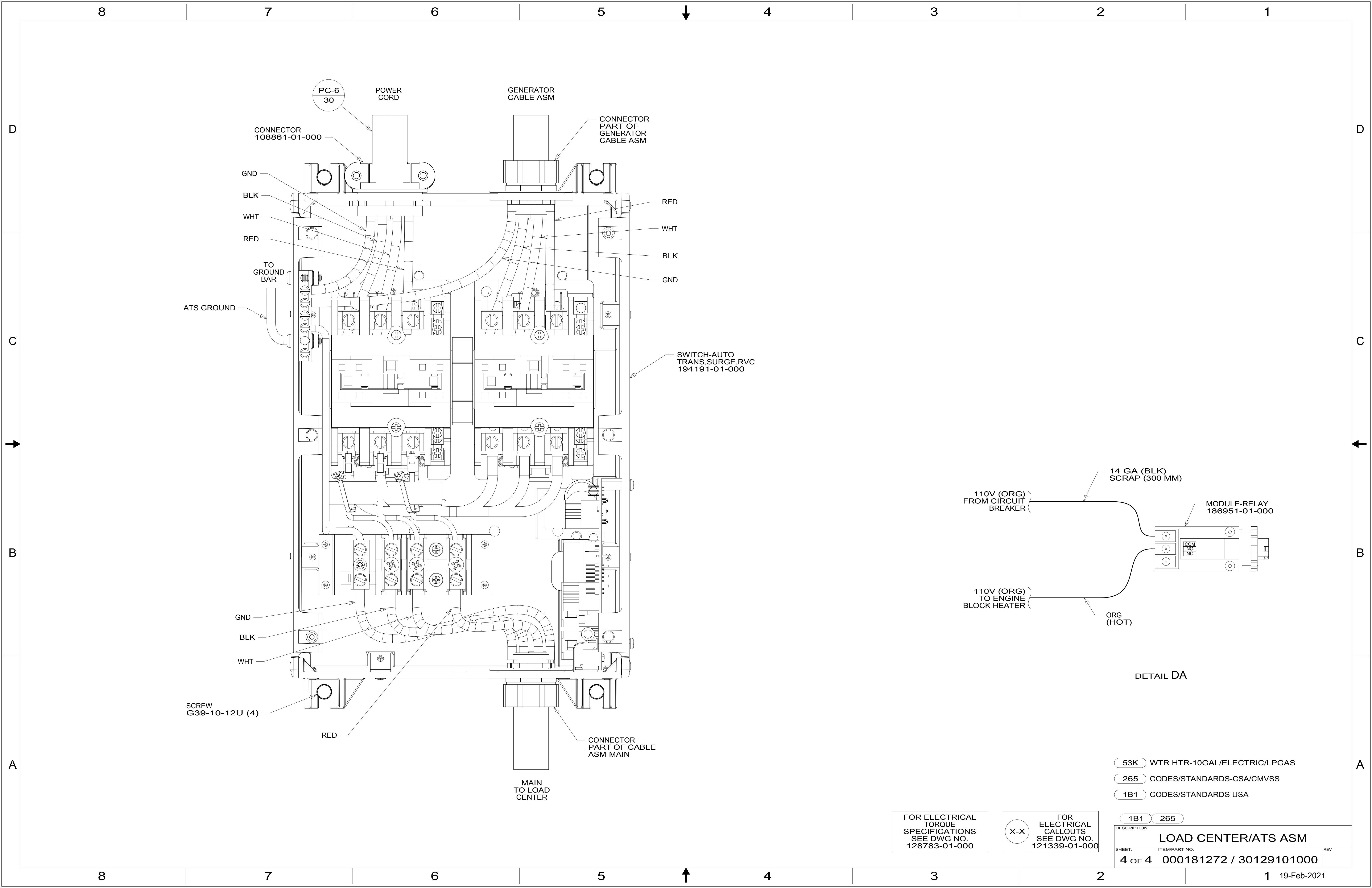
NOTES:

FOR ELECTRICAL TORQUE SPECIFICATIONS SEE DWG NO. 128783-01-000

FOR ELECTRICAL CALLOUTS SEE DWG NO. 121339-01-000

- 14C FIREPLACE-ELECTRIC
- 14A FIREPLACE-ELECTRIC WITHOUT
- 32W GENERATOR-START,AUTO SYSTEM
- 265 CODES/STANDARDS-CSA/CMVSS
- 1B1 CODES/STANDARDS USA

DESCRIPTION:		1B1 265	
<b>LOAD CENTER/ATS ASM</b>			
SHEET:	ITEM/PART NO.:	REV:	
3 OF 4	000181272 / 30129101000		



DETAIL DA

- 53K WTR HTR-10GAL/ELECTRIC/LPGAS
- 265 CODES/STANDARDS-CSA/CMVSS
- 1B1 CODES/STANDARDS USA

FOR ELECTRICAL TORQUE SPECIFICATIONS SEE DWG NO. 128783-01-000

FOR ELECTRICAL CALLOUTS SEE DWG NO. 121339-01-000

DESCRIPTION:	1B1 265	
<b>LOAD CENTER/ATS ASM</b>		
SHEET:	ITEM/PART NO.:	REV
4 OF 4	000181272 / 30129101000	