

D

C

B

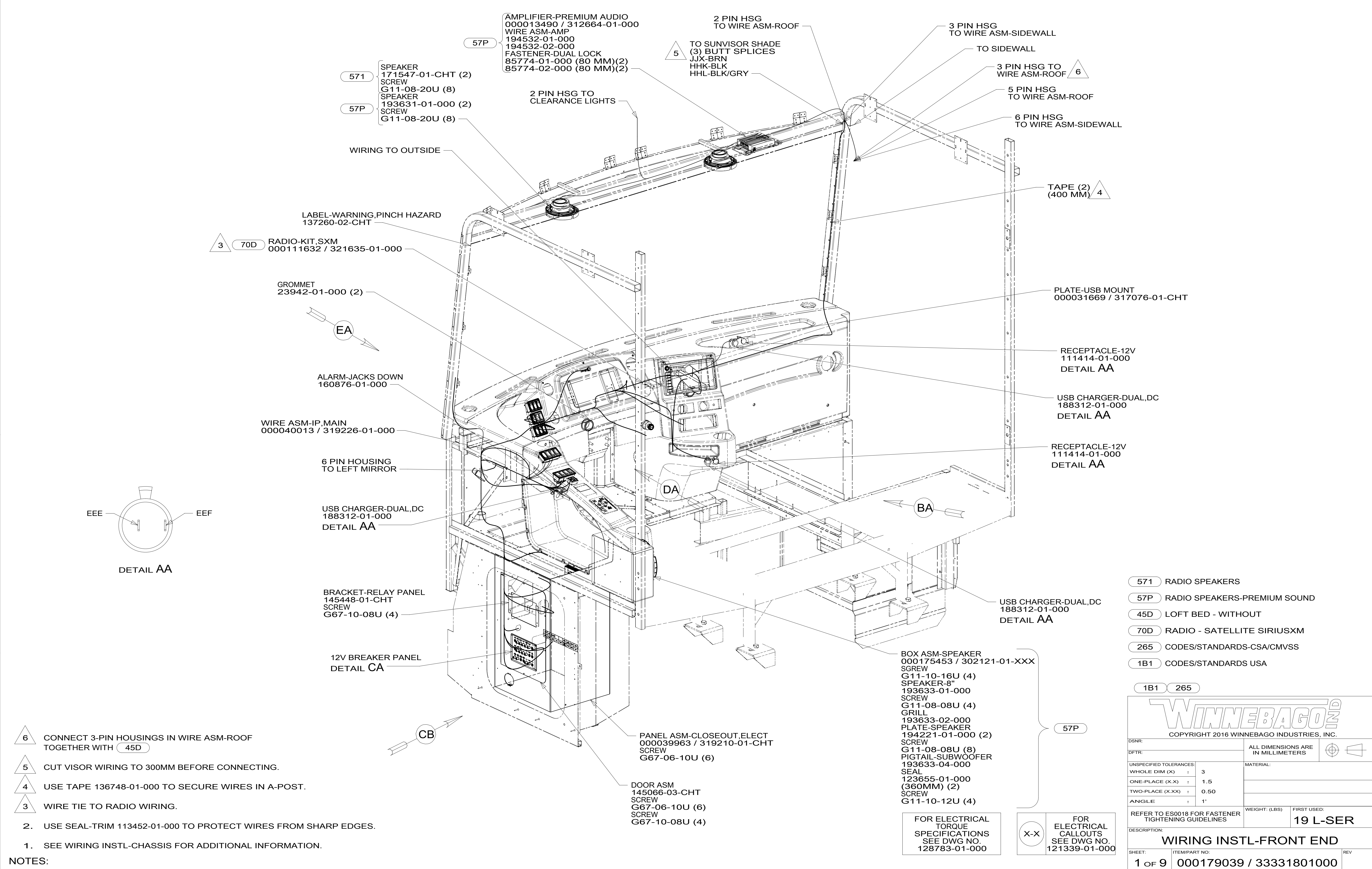
A

D

C

B

A



8

7

6

5

4

3

2

1

WIRE ASM-IP,MAIN

LABEL-CB PREP OPTION  
104678-01-000

CB POWER PROVISION  
YELLOW +12V  
WHITE GROUND  
COAX ANTENNA  
(SEE REVERSE SIDE ALSO)

WHT YEL

TO CUSTOMERS  
CB RADIO

DETAIL BB 579

1 2 PIN HOUSING  
(2) BUTT SPLICES

TO SWITCHES  
DETAIL DA

RING TERMINALS  
TO GROUND STUD

2 & 6 PIN HOUSINGS  
TO LEFT MIRROR

(2) BUTT SPLICES  
TO CB PREP  
DETAIL BB

TO SWITCHES  
DETAIL DA

SPADE TERMINAL  
TO USB CHARGER

TO SWITCHES  
DETAIL DA

2 & 6 PIN HOUSINGS  
TO HEATER/AC CONTROLS

TO WIRE ASM-RADIO  
DETAIL HA

DETAIL BA

2 EDGE OF LABEL TO HANG JUST BELOW BOTTOM OF DASH.

1 ROUTE WIRES UP LEFT A-PILLAR.

NOTES:

FOR ELECTRICAL  
TORQUE  
SPECIFICATIONS  
SEE DWG NO.  
128783-01-000

FOR ELECTRICAL  
CALLOUTS  
SEE DWG NO.  
121339-01-000

- 579 RADIO - CB WIRE PREP
- 265 CODES/STANDARDS-CSA/CMVSS
- 1B1 CODES/STANDARDS USA

DESCRIPTION:		1B1 265
<b>WIRING INSTL-FRONT END</b>		
SHEET:	ITEM/PART NO.:	REV
2 OF 9	000179039 / 33331801000	

8

7

6

5

4

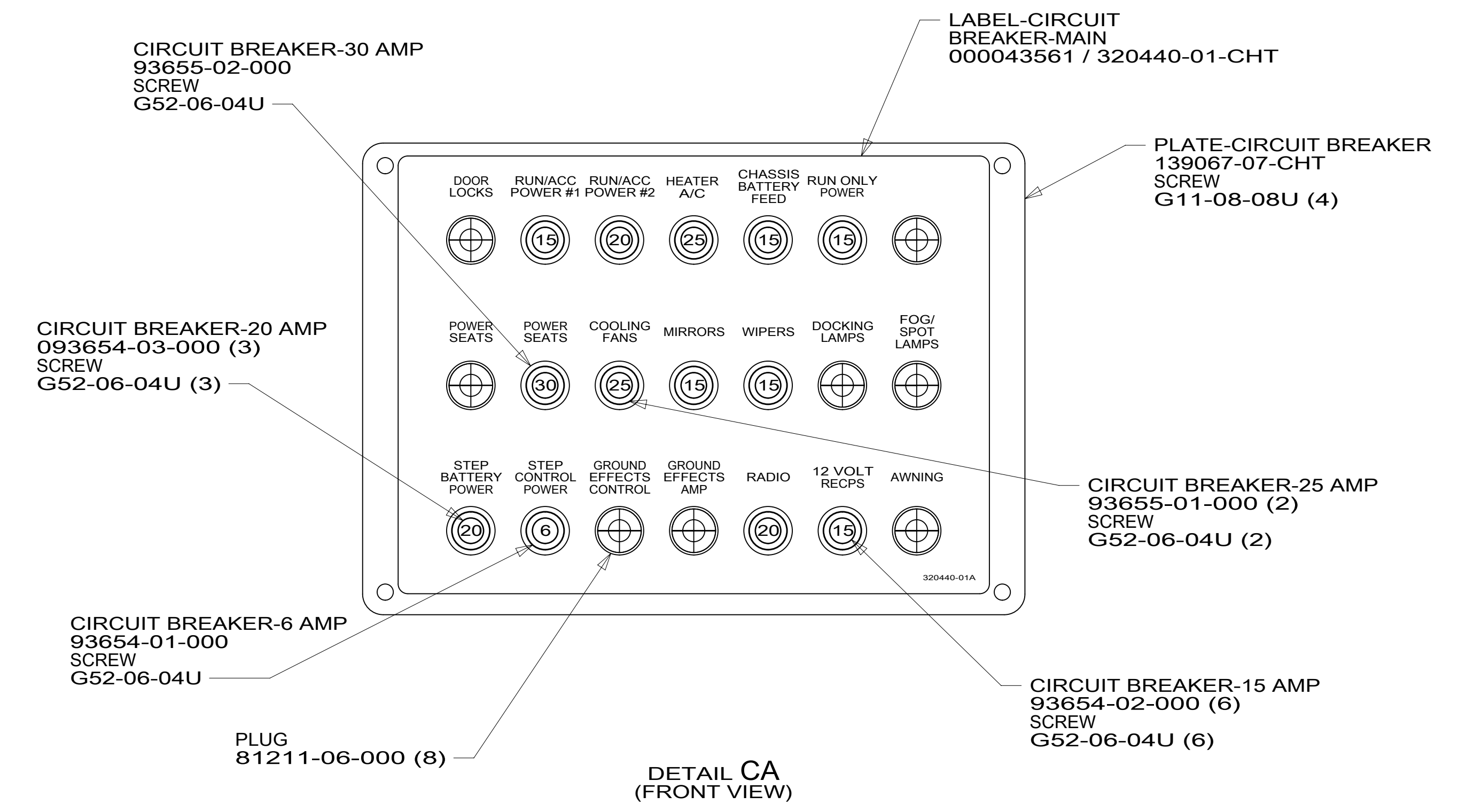
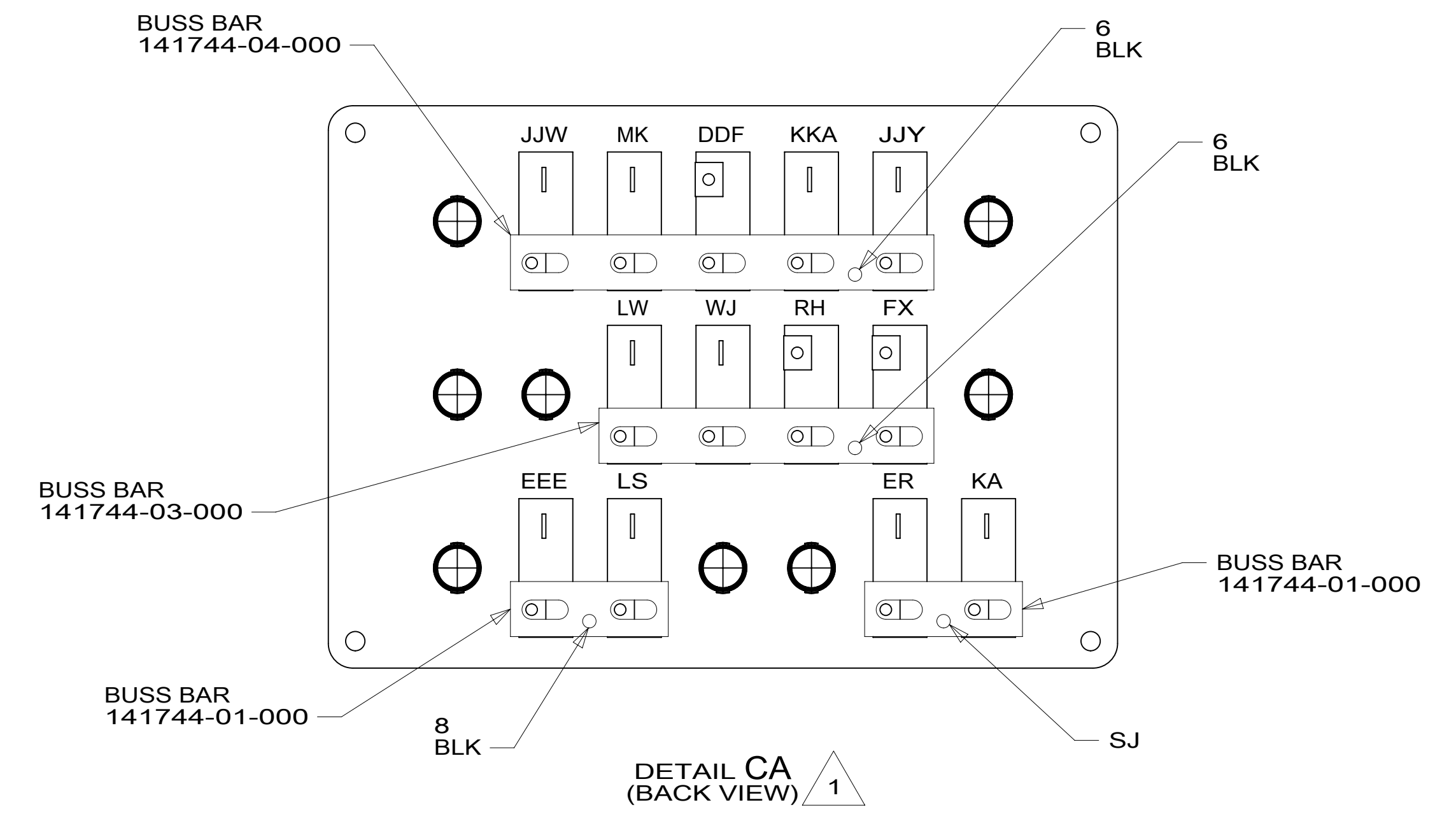
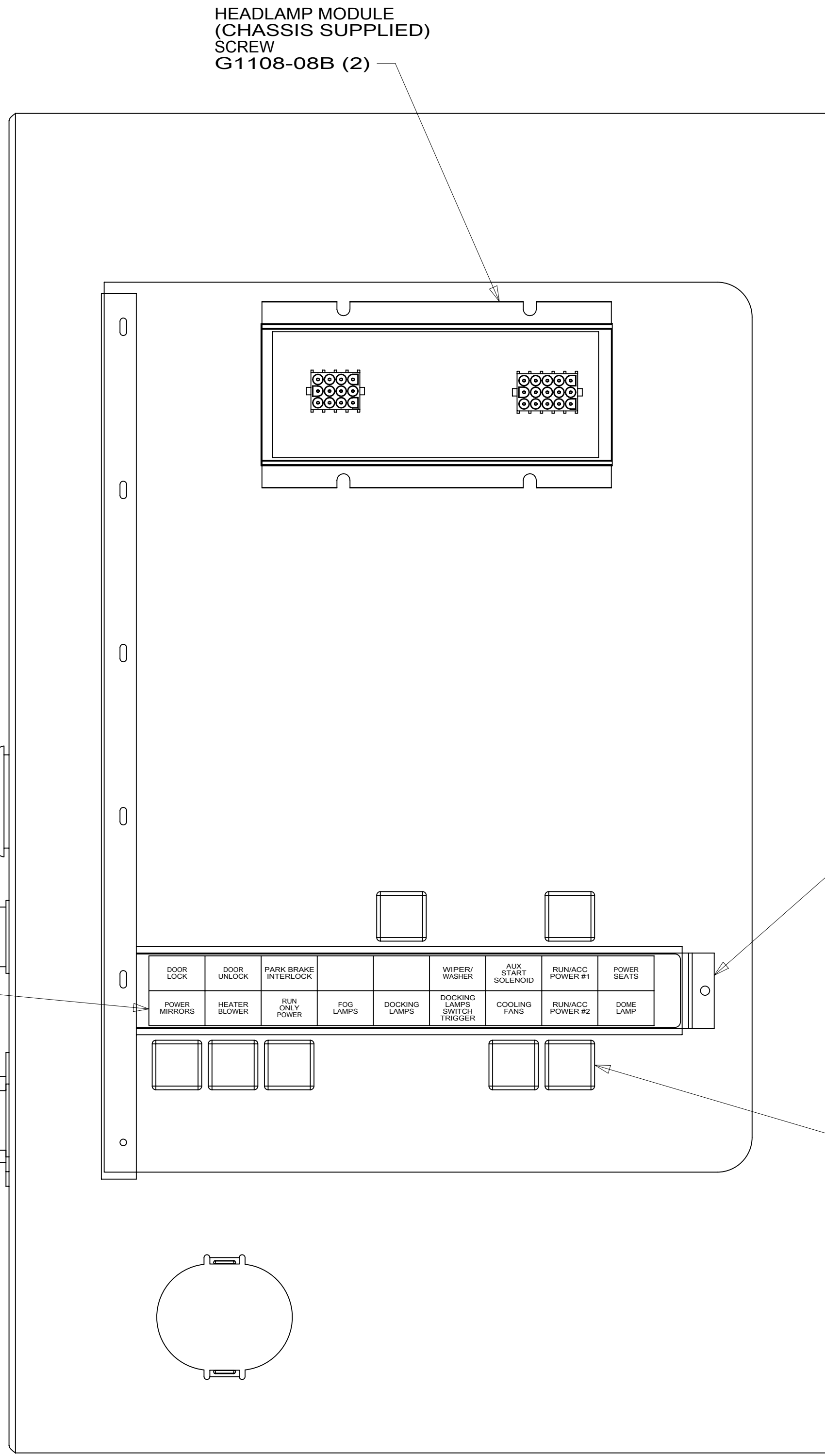
3

2

1

01-Aug-2019

8 7 6 5 4 3 2 1



- NOTES:
- 3 SEAL ALL SCREWS ON EXTERIOR SIDE OF COMPARTMENT. REFER TO SEALANT MANUAL.
  - 2 CIRCUIT FFD IS PART OF WIRE ASM-CHASSIS.
  - 1 CIRCUITS LABELED ON BREAKER ARE FROM WIRE ASM-IP, MAIN, UNLESS OTHERWISE SPECIFIED.

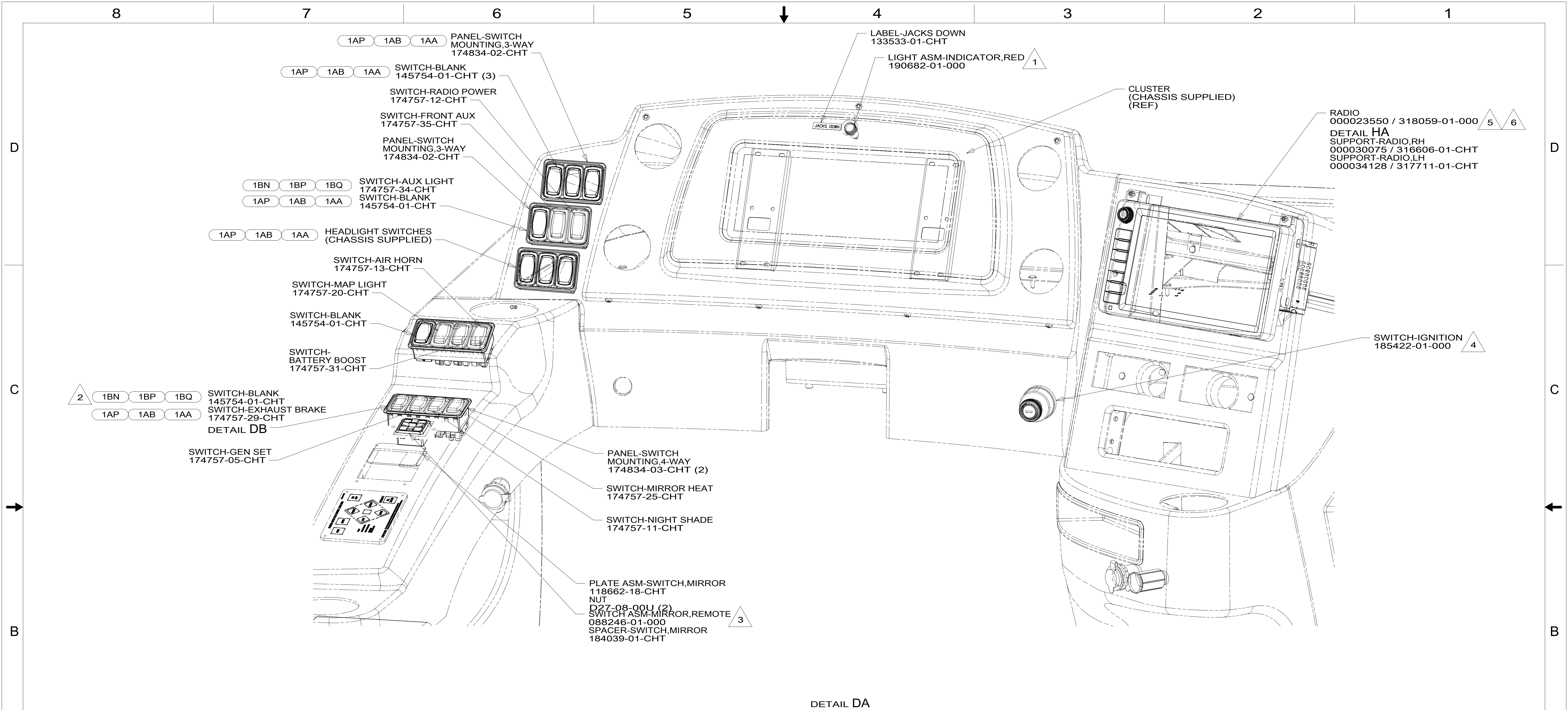
FOR ELECTRICAL TORQUE SPECIFICATIONS SEE DWG NO. 128783-01-000

FOR ELECTRICAL CALLOUTS SEE DWG NO. 121339-01-000

265 CODES/STANDARDS-CSA/CMVSS  
1B1 CODES/STANDARDS USA

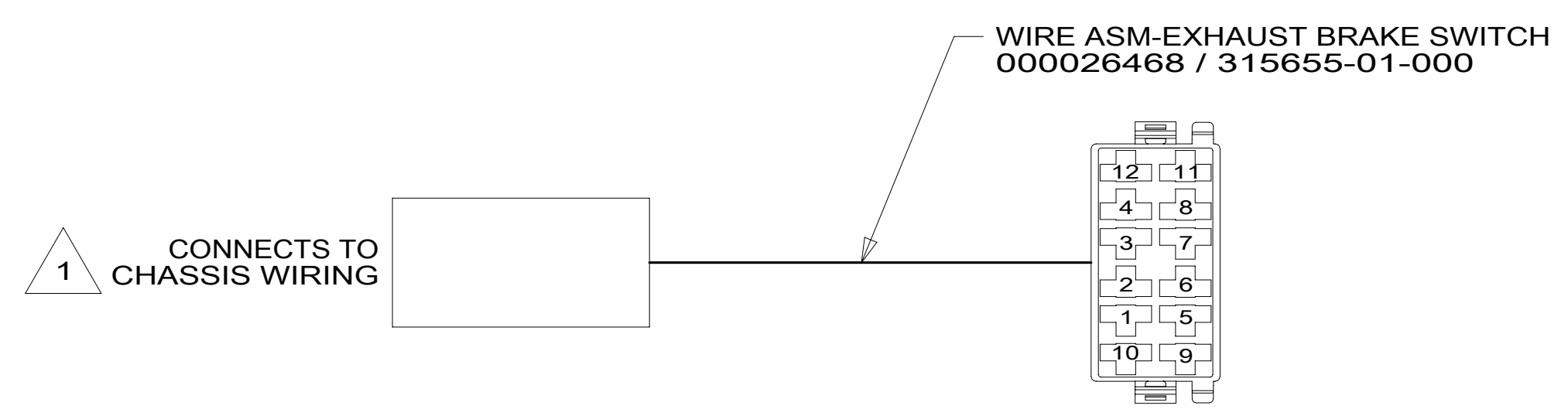
DESCRIPTION: <b>WIRING INSTL-FRONT END</b>	
SHEET: 3 OF 9	ITEM/PART NO: 000179039 / 3333180100
REV	

8 7 6 5 4 3 2 1 01-Aug-2019



DETAIL DA

- NOTES:
- 7. APPLY TAPE 8363-01-000 AS NECESSARY TO SECURE NON-LOCKING CONNECTIONS.
  - 6 ATTACH TO RADIO WITH SCREW SUPPLIED WITH RADIO.
  - 5 PLUG USB CABLE INTO LEAD ON BACK OF RADIO MARKED 'USB' ROUTE CABLE TO DASH POCKET BELOW RADIO.
  - 4 REPLACE CHASSIS SUPPLIED IGNITION SWITCH.
  - 3 MOUNT SWITCH SO WHEN ACTUATOR IS PUSHED LEFT, THE LETTER L IS SHOWING.
  - 2 CONNECT TO MATING LABELED CONNECTOR ON CHASSIS SUPPLIED WIRING.
  - 1 CONNECT POSITIVE WIRE TO TERMINAL MARKED WITH A "+", YEL-WINNEBAGO WIRING RED-HWH WIRING



DETAIL DB

1AP	FRTL 26,000 340 6.7L 6 SPEED
1AB	FRTL 27,910 340 6.7L 10 EMM
1AA	FRTL 29,410 340 6.7L 6 SPEED
1BN	FRTL 26,000 340 6.7L 6 SPEED
1BP	FRTL 27,910 340 6.7L 6 SPEED
1BQ	FRTL 29,410 340 6.7L 6 SPEED
265	CODES/STANDARDS-CSA/CMVSS
1B1	CODES/STANDARDS USA

FOR ELECTRICAL TORQUE SPECIFICATIONS SEE DWG NO. 128783-01-000

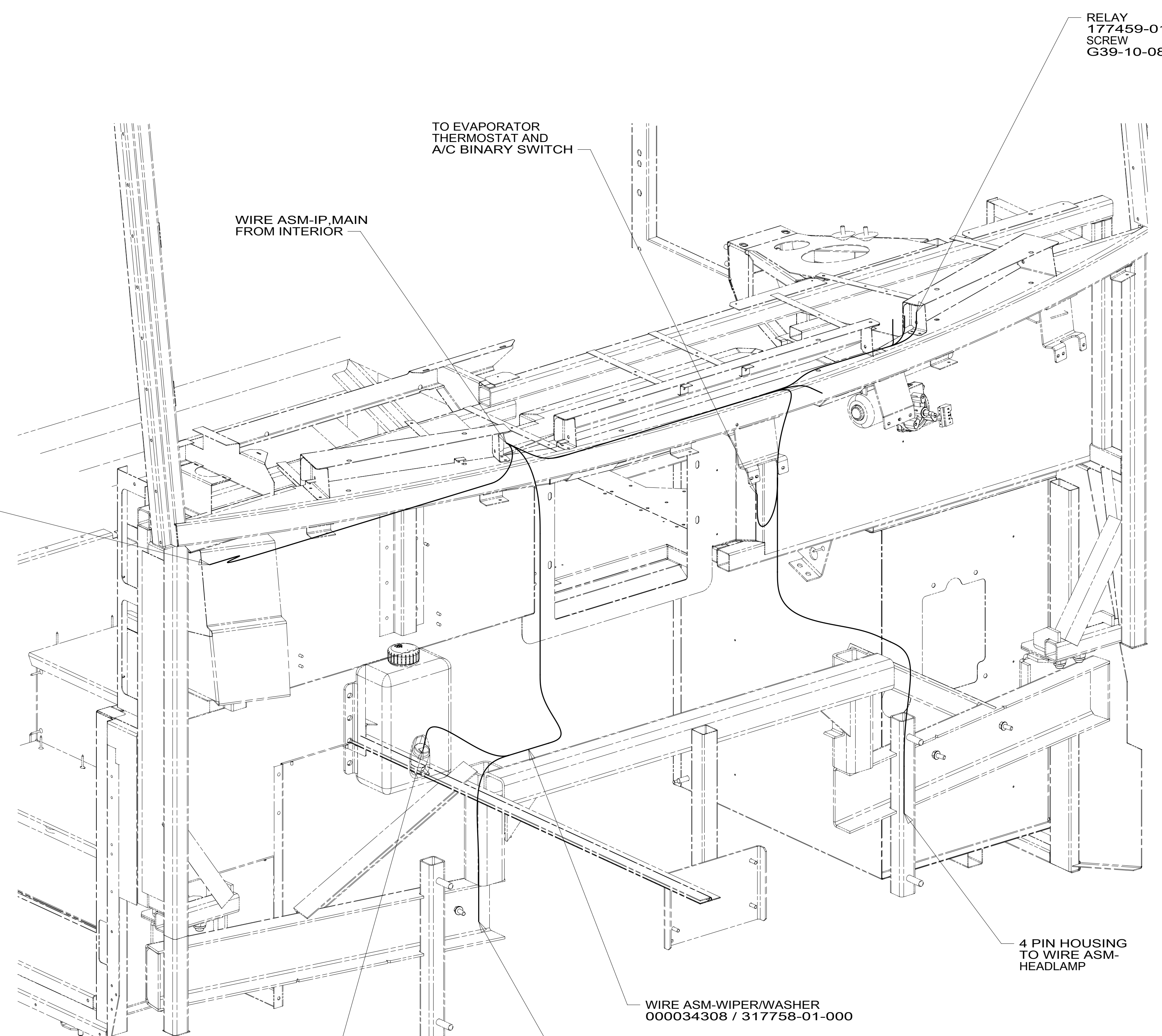
FOR ELECTRICAL CALLOUTS SEE DWG NO. 121339-01-000

1B1	265	
DESCRIPTION:		
<b>WIRING INSTL-FRONT END</b>		
SHEET:	ITEM/PART NO.:	REV
4 OF 9	000179039 / 33331801000	

8 7 6 5 4 3 2 1

D  
C  
B  
A

D  
C  
B  
A



RELAY  
177459-01-000 (3)  
SCREW  
G39-10-08U (3)

TO EVAPORATOR  
THERMOSTAT AND  
A/C BINARY SWITCH

WIRE ASM-IP,MAIN  
FROM INTERIOR

6 PIN HOUSING  
TO RIGHT MIRROR

4 PIN HOUSING  
TO WIRE ASM-  
HEADLAMP

WIRE ASM-WIPER/WASHER  
000034308 / 317758-01-000

4 PIN HOUSING  
TO WIRE ASM-  
HEADLAMP

2 PIN HOUSING  
TO WASHER BOTTLE

VIEW EA

FOR ELECTRICAL  
TORQUE  
SPECIFICATIONS  
SEE DWG NO.  
128783-01-000

FOR  
ELECTRICAL  
CALLOUTS  
SEE DWG NO.  
121339-01-000

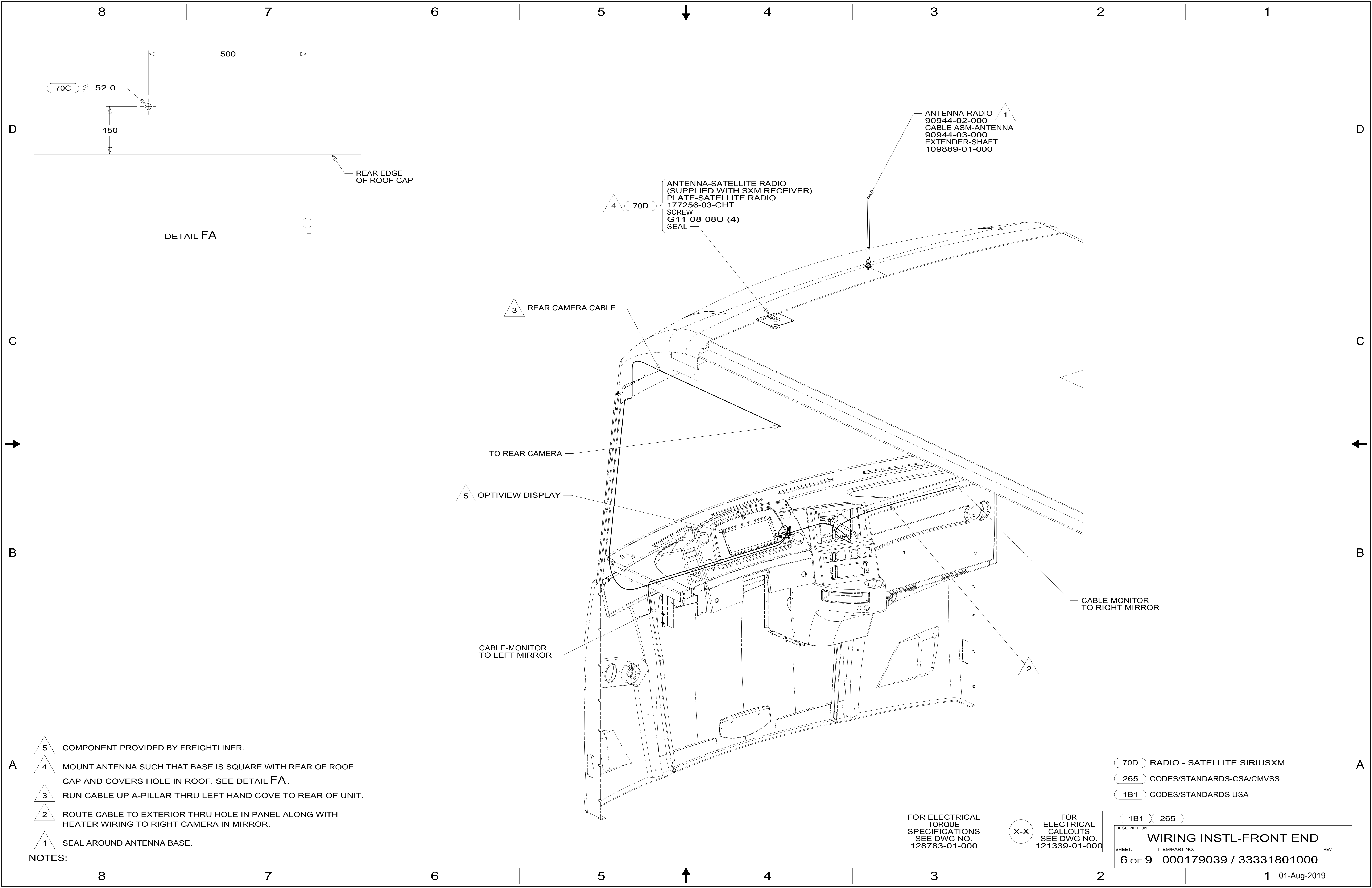
265 CODES/STANDARDS-CSA/CMVSS  
1B1 CODES/STANDARDS USA

1B1 265

DESCRIPTION:  
**WIRING INSTL-FRONT END**

SHEET: 5 OF 9 ITEM/PART NO: 000179039 / 33331801000 REV

8 7 6 5 4 3 2 1 01-Aug-2019



- 5** COMPONENT PROVIDED BY FREIGHTLINER.
- 4** MOUNT ANTENNA SUCH THAT BASE IS SQUARE WITH REAR OF ROOF CAP AND COVERS HOLE IN ROOF. SEE DETAIL FA.
- 3** RUN CABLE UP A-PILLAR THRU LEFT HAND COVE TO REAR OF UNIT.
- 2** ROUTE CABLE TO EXTERIOR THRU HOLE IN PANEL ALONG WITH HEATER WIRING TO RIGHT CAMERA IN MIRROR.
- 1** SEAL AROUND ANTENNA BASE.

NOTES:

- 70D** RADIO - SATELLITE SIRIUSXM
- 265** CODES/STANDARDS-CSA/CMVSS
- 1B1** CODES/STANDARDS USA

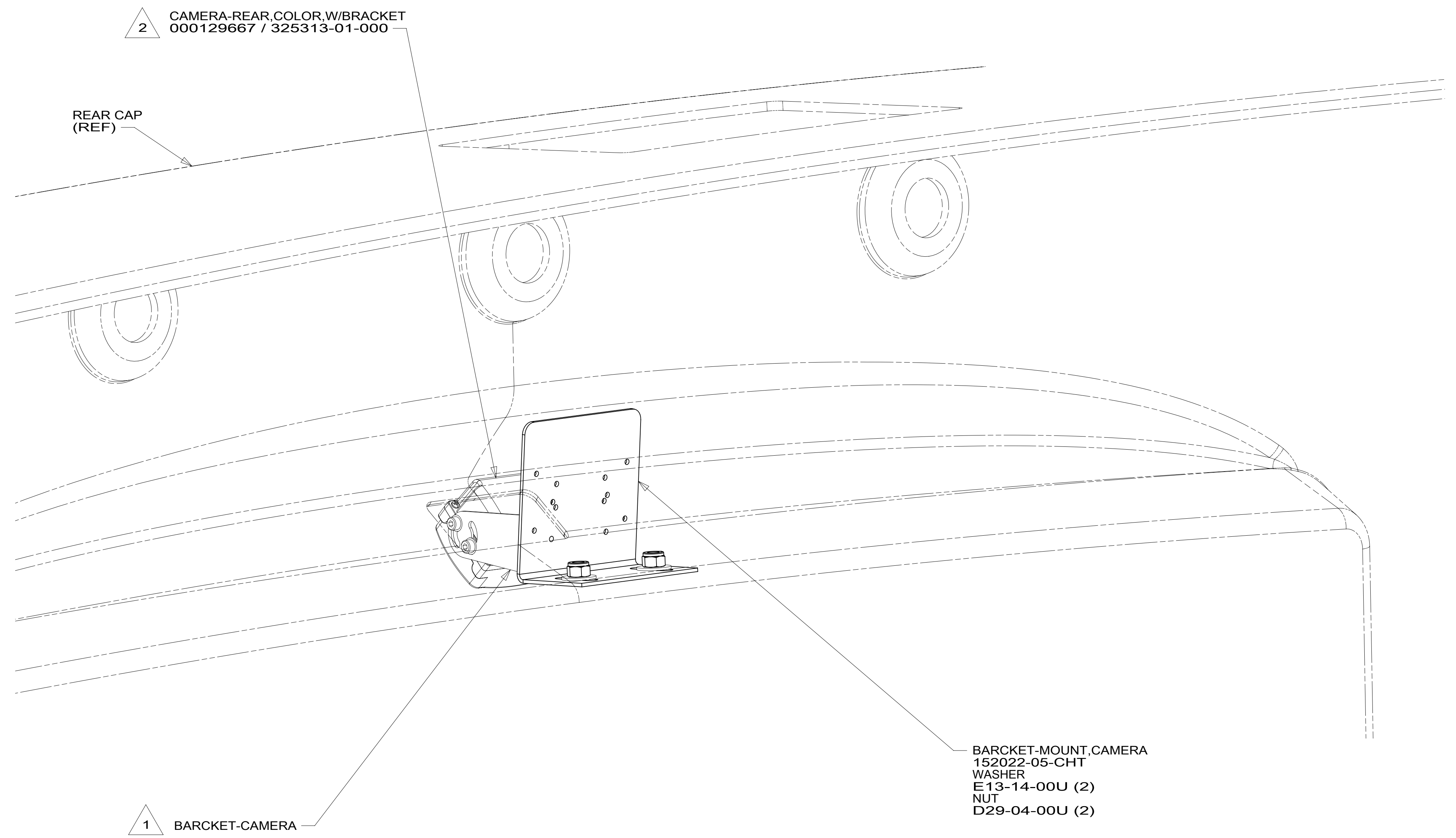
FOR ELECTRICAL TORQUE SPECIFICATIONS SEE DWG NO. 128783-01-000

FOR ELECTRICAL CALLOUTS SEE DWG NO. 121339-01-000

DESCRIPTION:	
<b>WIRING INSTL-FRONT END</b>	
SHEET:	ITEM/PART NO. REV
6 OF 9	000179039 / 33331801000

8 7 6 5 4 3 2 1

D  
C  
B  
A



2 CAMERA-REAR,COLOR,W/BRACKET  
000129667 / 325313-01-000

REAR CAP  
(REF)

1 BRACKET-CAMERA

BRACKET-MOUNT,CAMERA  
152022-05-CHT  
WASHER  
E13-14-00U (2)  
NUT  
D29-04-00U (2)

2 ALIGN CAMERA IN CENTER OF SHROUD OPENING AND  
ADJUST SO BACKWALL IS JUST VISIBLE.

1 PARTS SUPPLIED WITH REAR CAMERA.

NOTES:

265 CODES/STANDARDS-CSA/CMVSS

1B1 CODES/STANDARDS USA

1B1 265

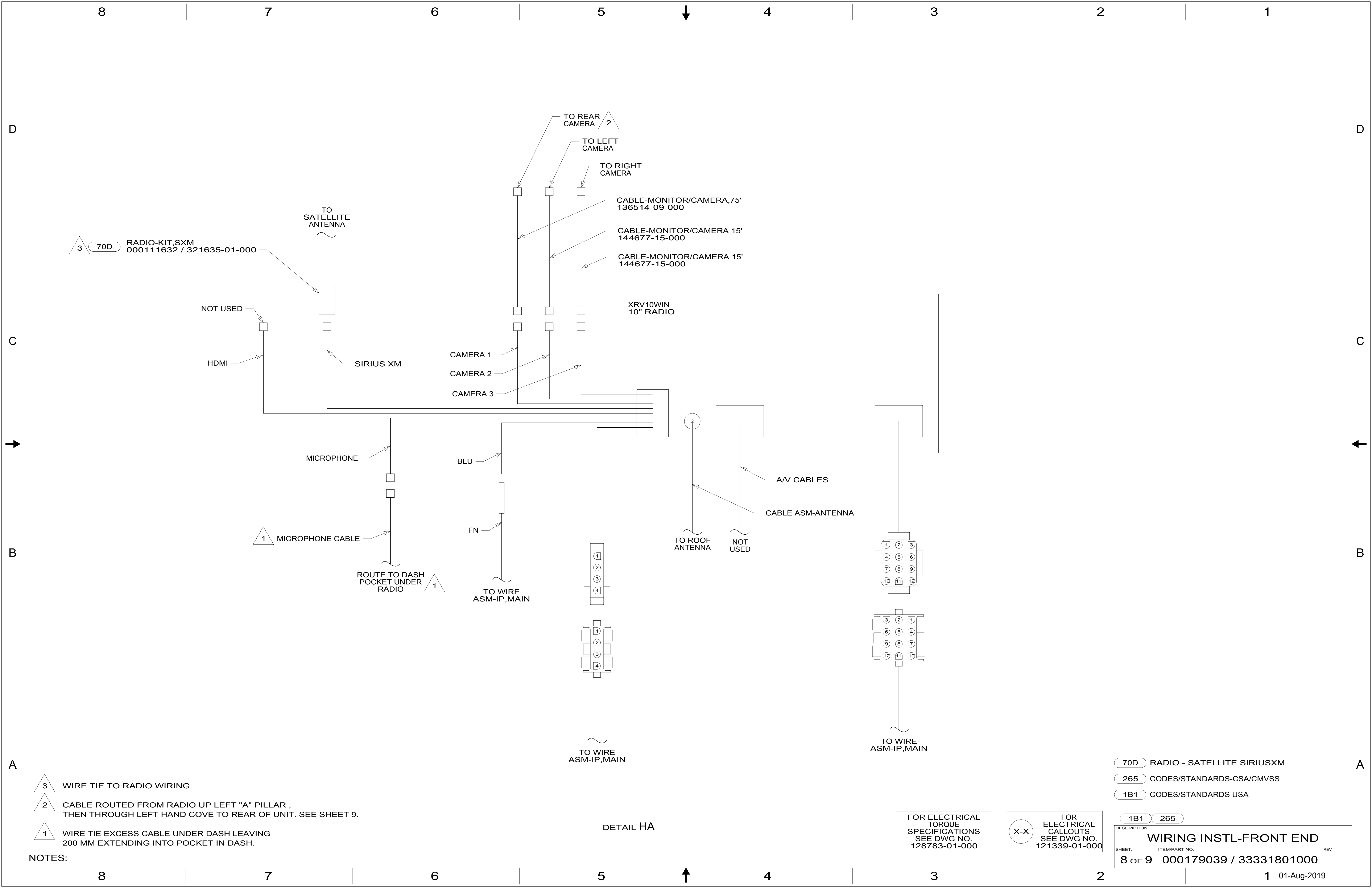
FOR ELECTRICAL  
TORQUE  
SPECIFICATIONS  
SEE DWG NO.  
128783-01-000

X-X  
FOR  
ELECTRICAL  
CALLOUTS  
SEE DWG NO.  
121339-01-000

DESCRIPTION:  
**WIRING INSTL-FRONT END**

SHEET: 7 OF 9 ITEM/PART NO: 000179039 / 33331801000 REV

8 7 6 5 4 3 2 1 01-Aug-2019



3 70D RADIO-KIT,SXM  
000111632 / 321635-01-000

NOT USED

HDMI

TO SATELLITE ANTENNA

SIRIUS XM

TO REAR CAMERA 2

TO LEFT CAMERA

TO RIGHT CAMERA

CABLE-MONITOR/CAMERA,75'  
136514-09-000

CABLE-MONITOR/CAMERA 15'  
144677-15-000

CABLE-MONITOR/CAMERA 15'  
144677-15-000

XRV10WIN  
10" RADIO

CAMERA 1

CAMERA 2

CAMERA 3

MICROPHONE

BLU

A/V CABLES

CABLE ASM-ANTENNA

1 MICROPHONE CABLE

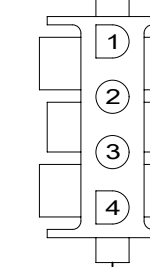
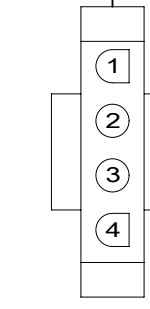
FN

TO ROOF ANTENNA

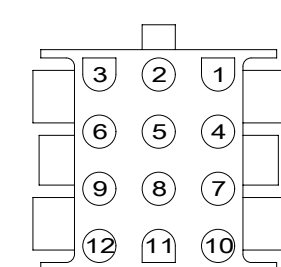
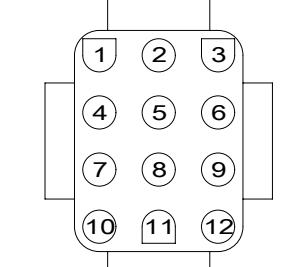
NOT USED

ROUTE TO DASH POCKET UNDER RADIO

TO WIRE ASM-IP,MAIN



TO WIRE ASM-IP,MAIN



TO WIRE ASM-IP,MAIN

- NOTES:
- 3 WIRE TIE TO RADIO WIRING.
  - 2 CABLE ROUTED FROM RADIO UP LEFT "A" PILLAR , THEN THROUGH LEFT HAND COVE TO REAR OF UNIT. SEE SHEET 9.
  - 1 WIRE TIE EXCESS CABLE UNDER DASH LEAVING 200 MM EXTENDING INTO POCKET IN DASH.

DETAIL HA

FOR ELECTRICAL TORQUE SPECIFICATIONS SEE DWG NO. 128783-01-000

FOR ELECTRICAL CALLOUTS SEE DWG NO. 121339-01-000

- 70D RADIO - SATELLITE SIRIUSXM
- 265 CODES/STANDARDS-CSA/CMVSS
- 1B1 CODES/STANDARDS USA

DESCRIPTION:		1B1 265	
<b>WIRING INSTL-FRONT END</b>			
SHEET:	ITEM/PART NO.:	REV	
8 OF 9	000179039 / 33331801000		



WIRE ASM-LOFT BED  
000179897 / 333466-01-000

RELAY  
063912-02-000 (2)

JA

SWITCH-ROCKER  
135740-07-CHT  
SWITCH-BASE  
135741-01-CHT  
SWITCH-BEZEL  
135742-01-CHT  
SCREW  
G11-08-08U (2)

SWITCH-MAGNET, SURFACE MOUNT  
187753-01-CHT  
SCREW  
G39-06-10U (4)

PLATE-KEY, LOFT BED  
000041278 / 319697-01-CHT  
LABEL-LOFT BED SWITCH  
000042109 / 320011-01-CHT  
SWITCH-KEY, SPST-ILLINOIS LCK  
163097-01-000  
ACTUATOR-SWITCH  
108356-01-CHT  
SWITCH-ROCKER  
108357-07-000

SWITCH-ROCKER  
135740-07-CHT  
SWITCH-BASE  
135741-01-CHT  
SWITCH-BEZEL  
135742-01-CHT  
SCREW  
G11-08-08U (2)

PRLED-2  
2

DETAIL JA

- 45B LOFT BED
- 265 CODES/STANDARDS-CSA/CMVSS
- 1B1 CODES/STANDARDS USA

1B1 265 45B

FOR ELECTRICAL TORQUE SPECIFICATIONS SEE DWG NO. 128783-01-000

FOR ELECTRICAL CALLOUTS SEE DWG NO. 121339-01-000

DESCRIPTION:  
**WIRING INSTL-FRONT END**

SHEET: 9 OF 9 ITEM/PART NO: 000179039 / 33331801000 REV

NOTES:  
1 CONNECT NC TO COMMON AND NC-1 TO NORMALLY CLOSED TERMINALS.

D

C

B

A

8

7

6

5

4

3

2

1

8

7

6

5

4

3

2

1

01-Aug-2019