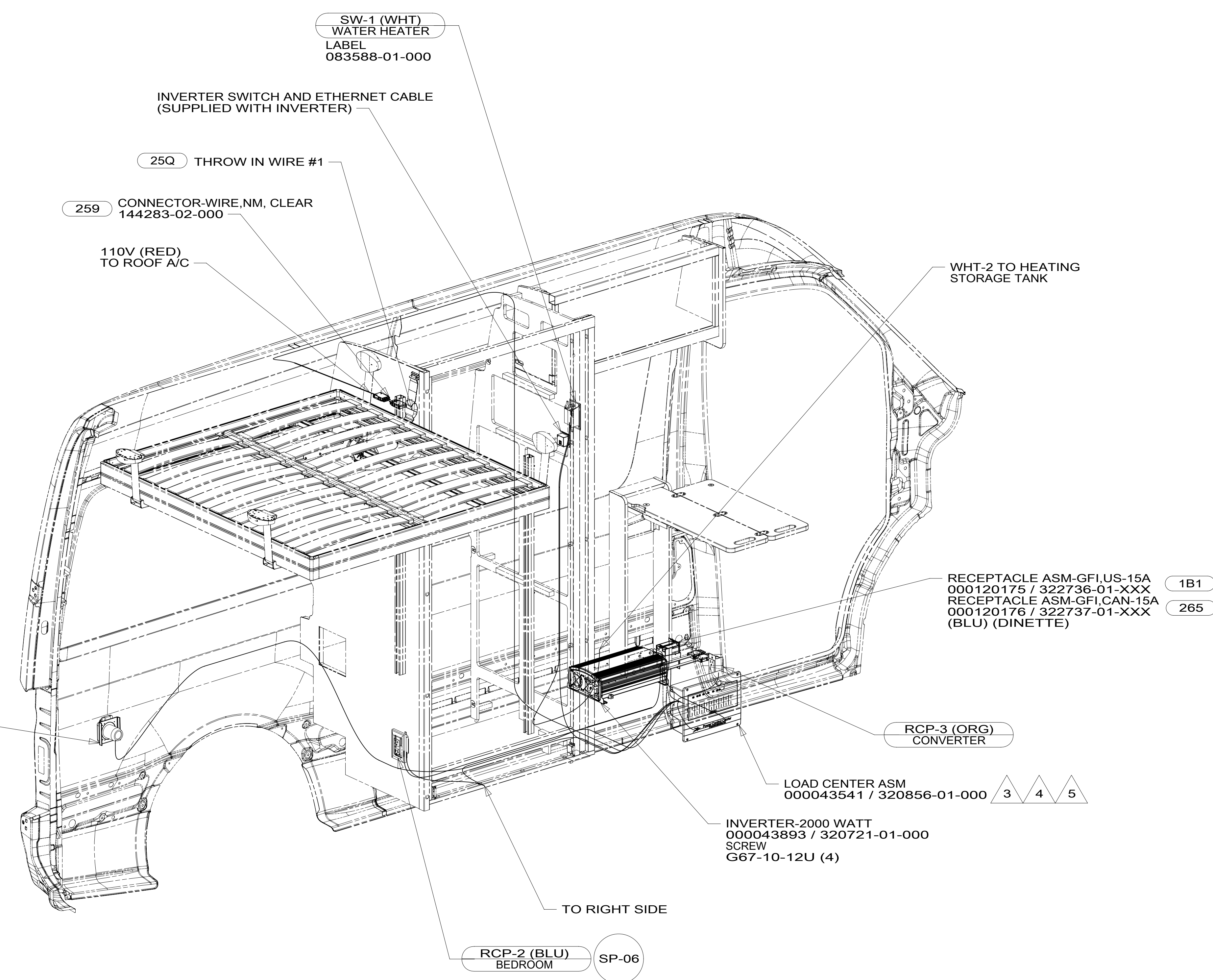


D

C

B

A



- 5 GROUND WIRES (8 GA WIRE) FROM LOAD CENTER AND ATS ROUTES THROUGH FLOOR TO GROUND BOLT UNDER DRIVER'S SEAT.
- 4 LOAD CENTER AND ATS GROUND WIRES MUST BE ATTACHED DIRECTLY TO CHASSIS GROUND.
- 3 SEE SHEET 4 FOR ADDITIONAL INFORMATION.
2. ALL 110V WIRES TO BE CLAMPED WITH CLAMP 10497-05-000 WITHIN 200MM OF OUTLET BOXES, USE SCREW G67-10-12B.
1. AT MINIMUM ALL WIRES TO BE SUPPORTED AND SECURED PER CODE REQUIREMENTS. USE CLAMP 10495 OR 10497 OR WIRE TIE 8343 OR 108046 AND SCREW G67-XX-XXX OR G56-XX-XXX AS APPROPRIATE FOR INSTALLATION.

NOTES:

- 25Q A/C
- 259 A/C-WITHOUT
- 265 CODES/STANDARDS-CSA/CMVSS
- 1B1 CODES/STANDARDS USA

WINNEBAGO
COPYRIGHT 2016 WINNEBAGO INDUSTRIES, INC.

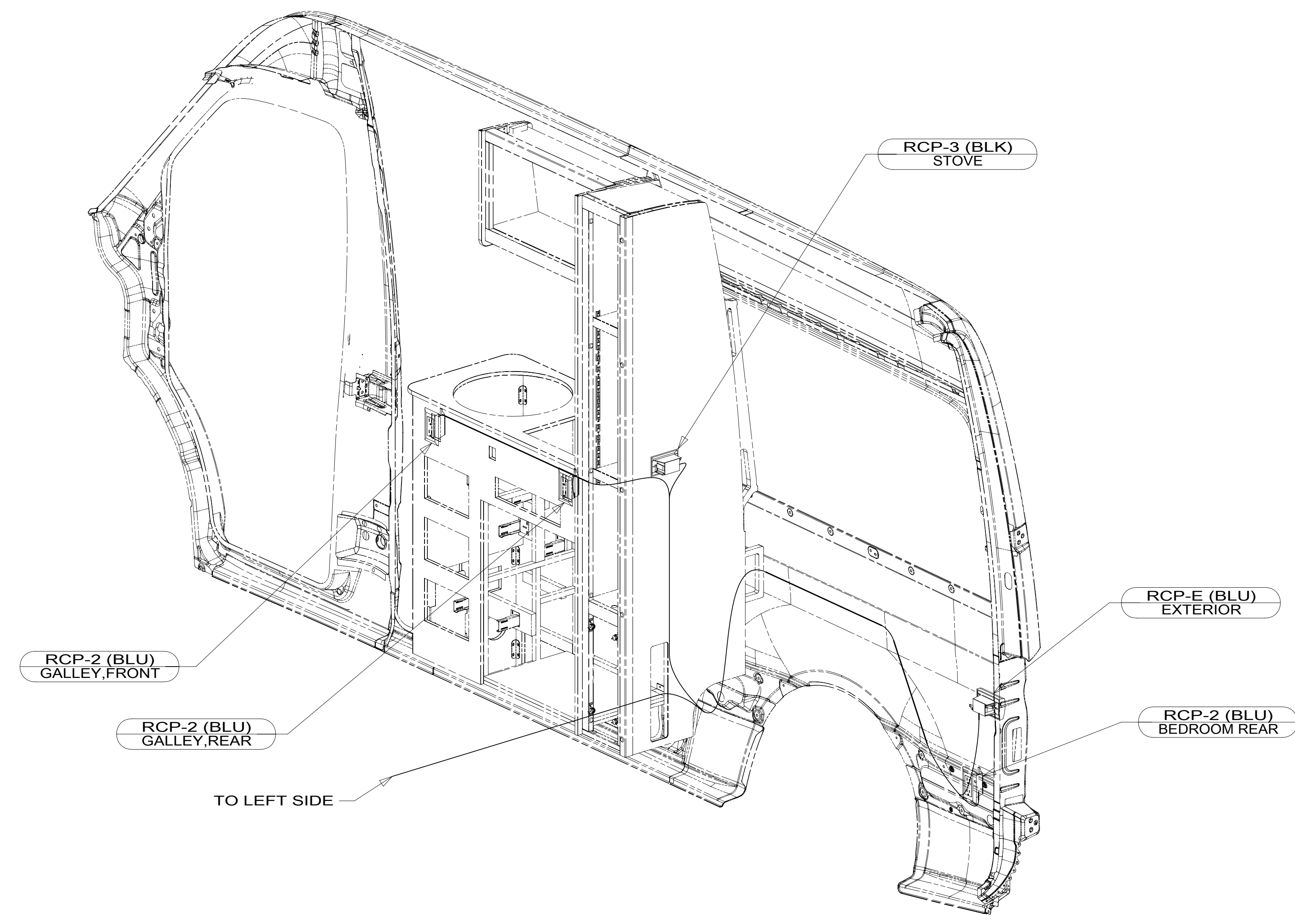
DSNR:		ALL DIMENSIONS ARE IN MILLIMETERS	
DIFFR:		MATERIAL:	
UNSPECIFIED TOLERANCES:			
WHOLE DIM (X)	: 3		
ONE-PLACE (X.X)	: 1.5		
TWO-PLACE (X.XX)	: 0.50		
ANGLE	: 1°		
REFER TO ES0018 FOR FASTENER TIGHTENING GUIDELINES		WEIGHT: (LBS)	FIRST USED:
			19 B44E
DESCRIPTION:			
WIRING INSTL-BODY, 110V			
SHEET:	ITEM/PART NO.:	REV:	
1 OF 4	000177633 / 33322601000		
REF:		1 19-Jul-2019	

FOR ELECTRICAL TORQUE SPECIFICATIONS SEE DWG NO. 128783-01-000

FOR ELECTRICAL CALLOUTS SEE DWG NO. 121339-01-000

8 7 6 5 4 3 2 1

D
C
B
A



- NOTES:
1. AT MINIMUM ALL WIRES TO BE SUPPORTED AND SECURED PER CODE REQUIREMENTS. USE CLAMP 10495 OR 10497 OR WIRE TIE 8343 OR 108046 AND SCREW G67-XX-XXX OR G56-XX-XXX AS APPROPRIATE FOR INSTALLATION.
 2. ALL 110V WIRES TO BE CLAMPED WITH CLAMP 10497-05-000 WITHIN 200MM OF OUTLET BOXES, USE SCREW G67-10-12B.

FOR ELECTRICAL TORQUE SPECIFICATIONS SEE DWG NO. 128783-01-000

FOR ELECTRICAL CALLOUTS SEE DWG NO. 121339-01-000

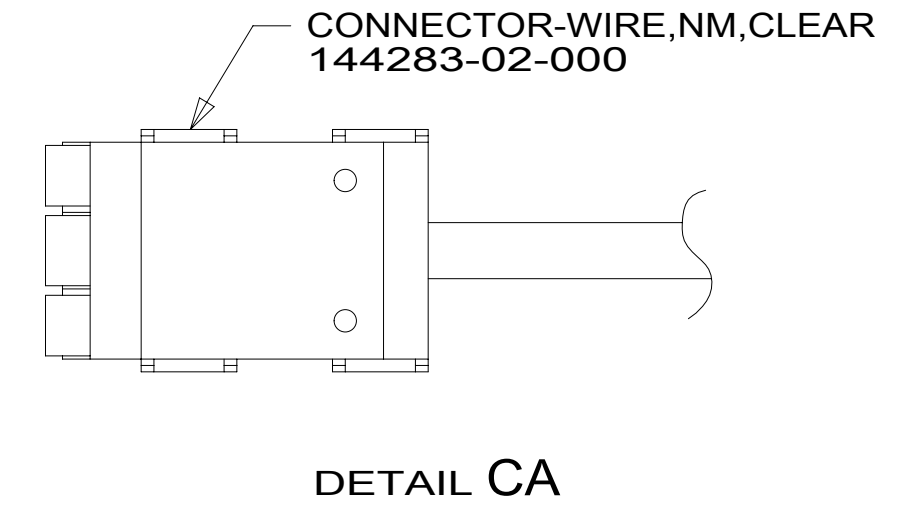
- 265 CODES/STANDARDS-CSA/CMVSS
- 1B1 CODES/STANDARDS USA

DESCRIPTION:		1B1	265
WIRING INSTL-BODY, 110V			
SHEET:	ITEM/PART NO.:	REV	
2 OF 4	000177633 / 33322601000		

8 7 6 5 4 3 2 1 19-Jul-2019

8 7 6 5 4 3 2 1

RED	1B1	136135-07-060	△6
	265	136136-07-060	△6
ORG	1B1	136131-05-010	
	265	136134-05-010	
BLK	1B1	136135-06-050	
	265	136136-06-050	
BLU	1B1	136131-02-140	
	265	136134-02-140	
WHT	1B1	136135-09-025	
	265	136136-09-025	
INV MAIN	1B1	136135-05-009	△6 △4
	265	136136-05-009	△6 △4
INV SUB MAIN	1B1	136135-05-009	△6 △5
	265	136136-05-009	△6 △5
MAIN	1B1	136137-01-037	
	265	136138-01-037	
THROW IN WIRE #1	1B1	136135-07-007	25Q △6
	265	136136-07-007	25Q △6
WHT-2	1B1	136135-09-023	
	265	136136-09-023	
POWER CORD		183140-01-000	△7



D

D

C

C

B

B

A

A

- NOTES:
- 1. ALL GROUNDS WIRES TO BE COVERED WITH TUBING 8041-02-000.
 - 2. SECURE WIRES TO BACKSIDE OF LOAD CENTER WITH WIRE TIE 116673-01-000.
 - 3. SEE WIRING INSTL-BODY, 12V FOR ADDITIONAL INFORMATION.

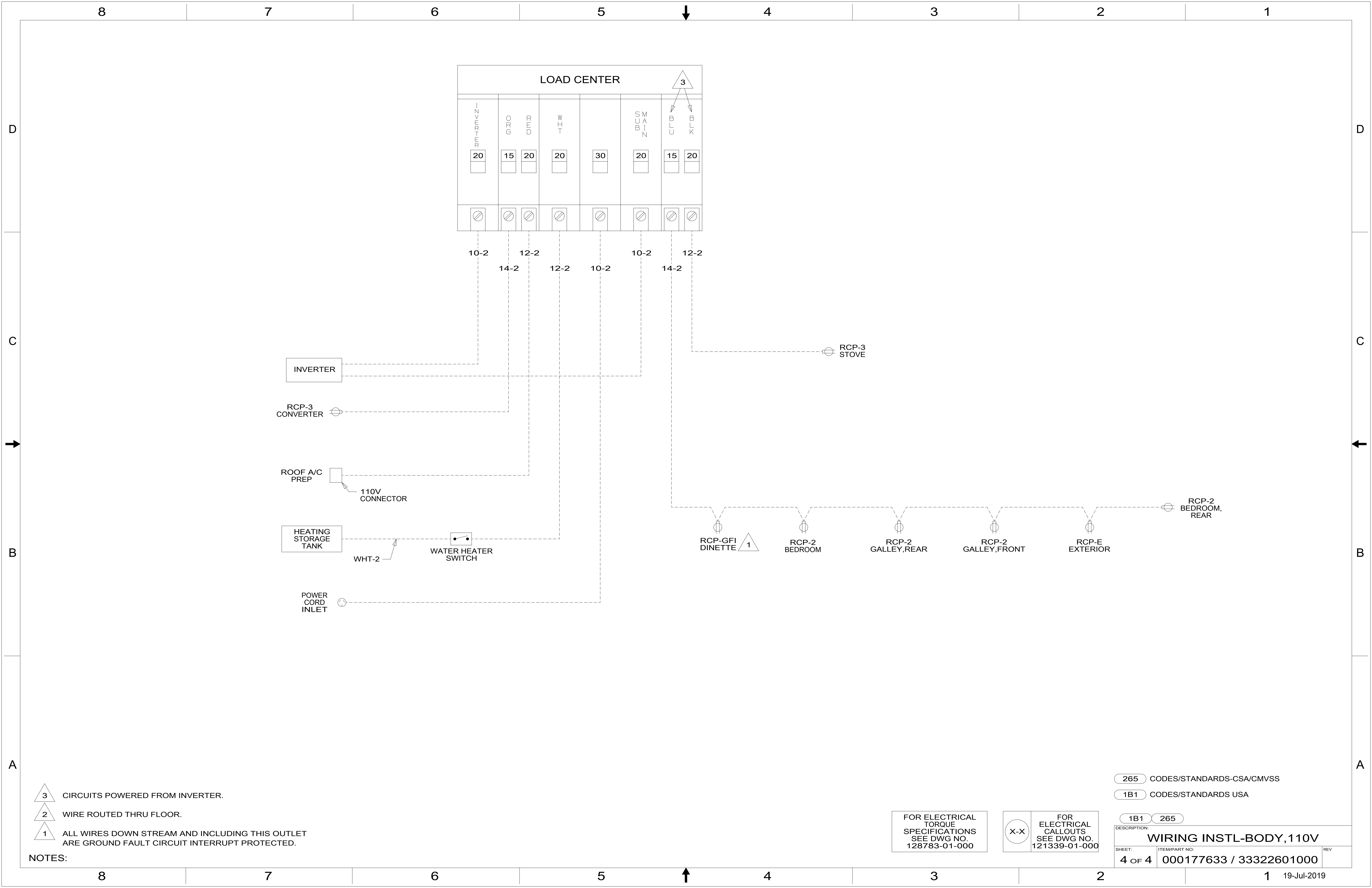
- 25Q A/C
- 265 CODES/STANDARDS-CSA/CMVSS
- 1B1 CODES/STANDARDS USA




FOR ELECTRICAL TORQUE SPECIFICATIONS SEE DWG NO. 128783-01-000

FOR ELECTRICAL CALLOUTS SEE DWG NO. 121339-01-000

DESCRIPTION: 1B1 265
WIRING INSTL-BODY, 110V
 SHEET: 3 OF 4 ITEM/PART NO.: 000177633 / 33322601000 REV

8 7 6 5 4 3 2 1 19-Jul-2019



- NOTES:
-  CIRCUITS POWERED FROM INVERTER.
 -  WIRE ROUTED THRU FLOOR.
 -  ALL WIRES DOWN STREAM AND INCLUDING THIS OUTLET ARE GROUND FAULT CIRCUIT INTERRUPT PROTECTED.

265 CODES/STANDARDS-CSA/CMVSS
 1B1 CODES/STANDARDS USA

FOR ELECTRICAL TORQUE SPECIFICATIONS SEE DWG NO. 128783-01-000

FOR ELECTRICAL CALLOUTS SEE DWG NO. 121339-01-000

DESCRIPTION:	
WIRING INSTL-BODY, 110V	
SHEET:	ITEM/PART NO. REV
4 OF 4	000177633 / 33322601000