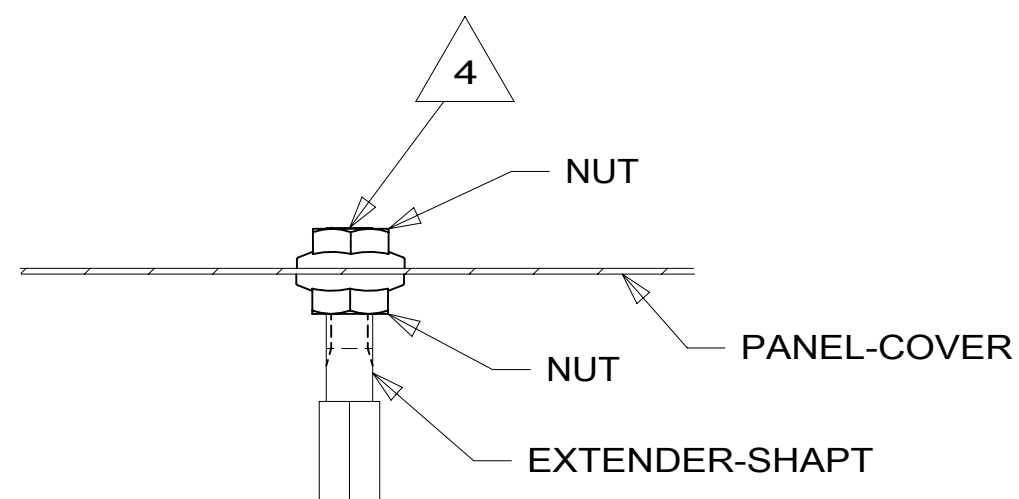
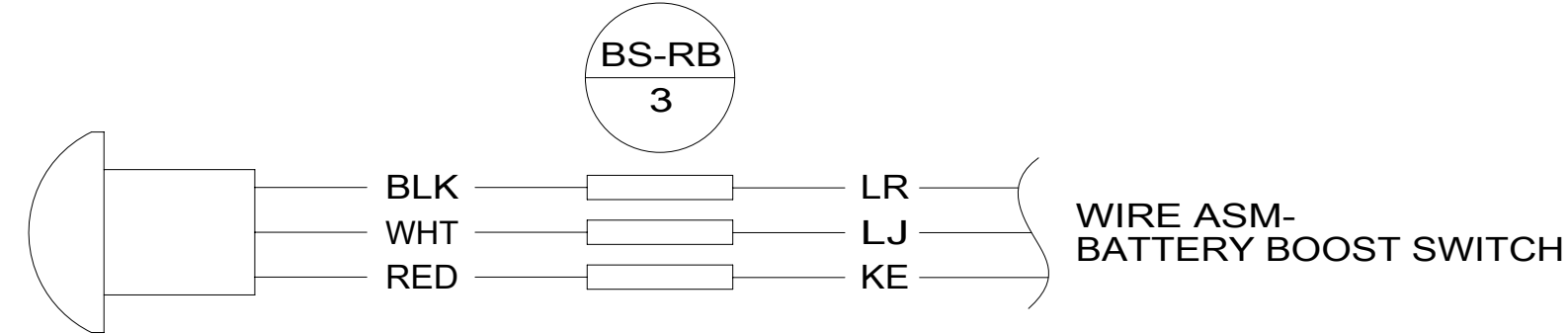
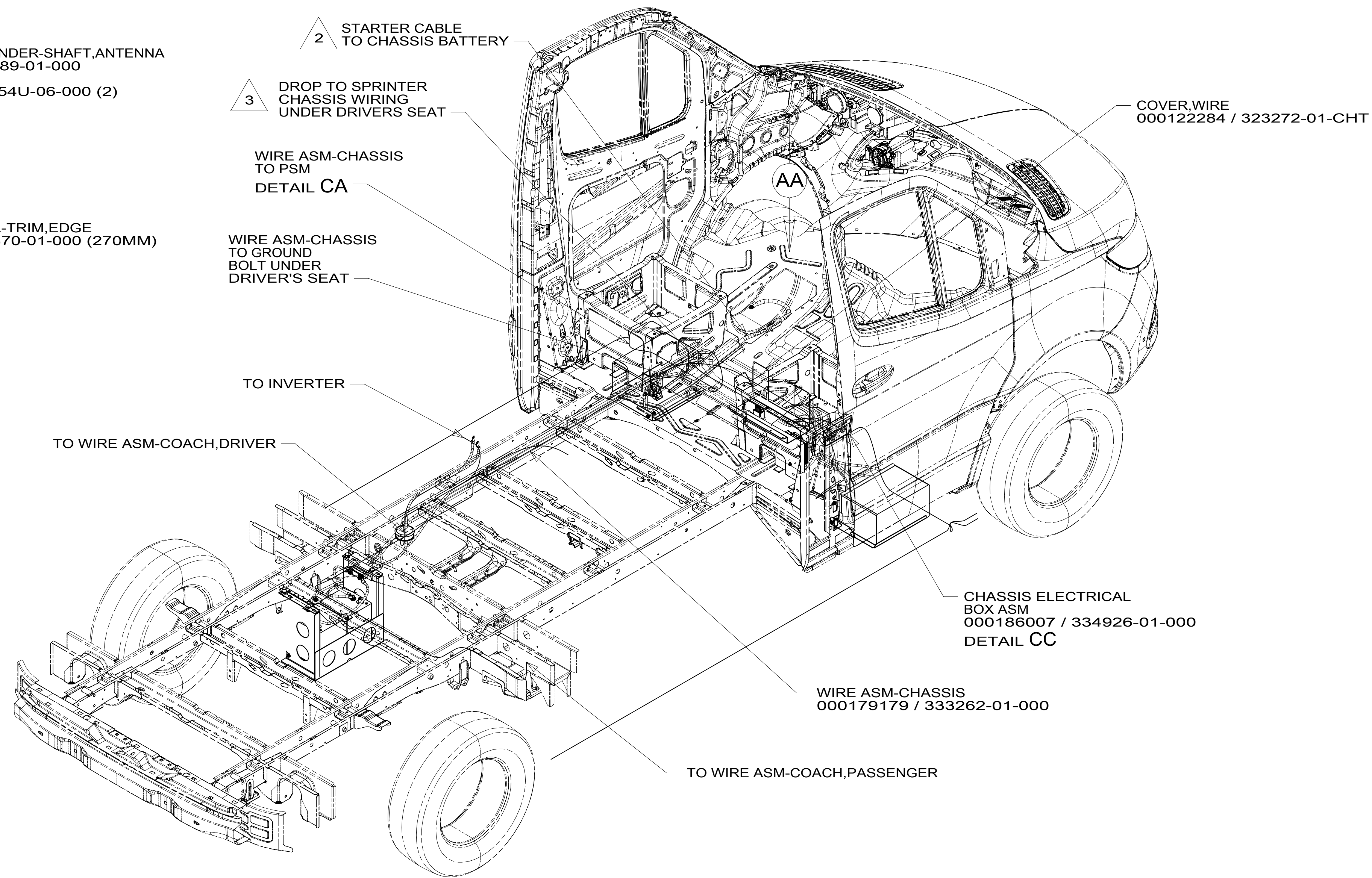


VIEW AA 5



SECTION AB-AB



DETAIL AC

- 5 REMOVE PLASTIC TRAY AND DISCARD.
- 4 INSTALL NUT SO THAT IT IS FLUSH WITH TOP OF EXTENDER-SHAFT.
- 3 CUT WIRE TIE AROUND SPRINTER SEAL, ROUTE THE CHASSIS WIRING THROUGH HOLE AND WIRE TIE SEAL WITH WIRE TIE 8343-04-000.
- 2 SEE BATTERY INSTL. FOR ADDITIONAL INFORMATION.
- 1. SECURE CONDUIT 41953, TAB AS REQUIRED, OVER ALL WIRES IN CONTACT WITH SHARP EDGES.

NOTES:

- 1MW MERCD-11030# DSL,D DOOR VAN
- 265 CODES/STANDARDS-CSA/CMVSS
- 1B1 CODES/STANDARDS USA

- 1B1 265 1MW



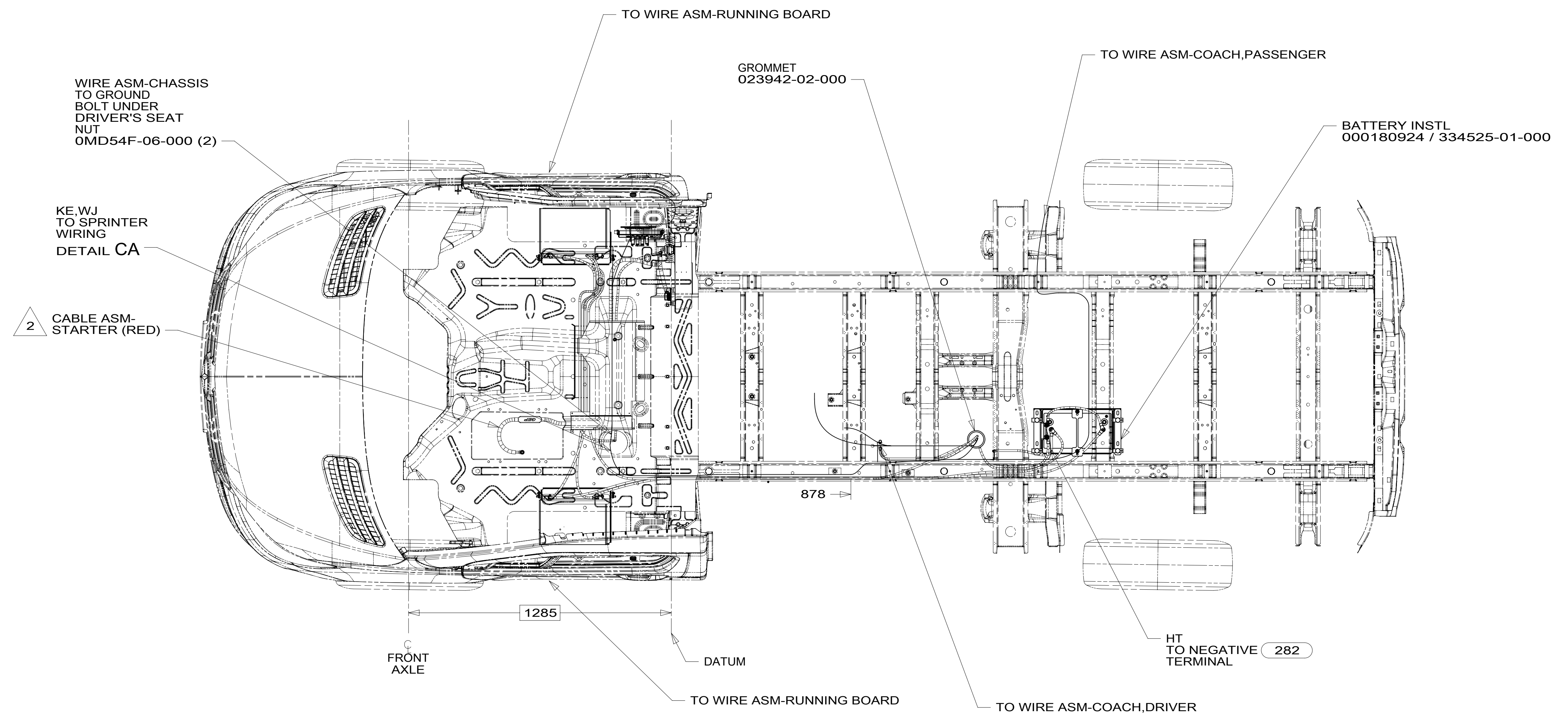
DSNR:		ALL DIMENSIONS ARE IN MILLIMETERS	
DFFR:		MATERIAL:	
UNSPECIFIED TOLERANCES:			
WHOLE DIM (X)	: 3		
ONE-PLACE (X.X)	: 1.5		
TWO-PLACE (X.XX)	: 0.50		
ANGLE	: 1°		
REFER TO ES0018 FOR FASTENER TIGHTENING GUIDELINES		WEIGHT: (LBS)	FIRST USED:
			19 B44E
DESCRIPTION: WIRING INSTL-CHASSIS			
SHEET:	ITEM/PART NO.:	REV:	
1 OF 3	000177632 / 33322801000		

FOR ELECTRICAL TORQUE SPECIFICATIONS SEE DWG NO. 128783-01-000

FOR ELECTRICAL CALLOUTS SEE DWG NO. 121339-01-000

8 7 6 5 4 3 2 1

D
C
B
A



2 SEE BATTERY INSTL FOR ADDITIONAL INFORMATION.

1. SECURE CONDUIT 41953, TAB AS REQUIRED, OVER ALL WIRES IN CONTACT WITH SHARP EDGES.

NOTES:

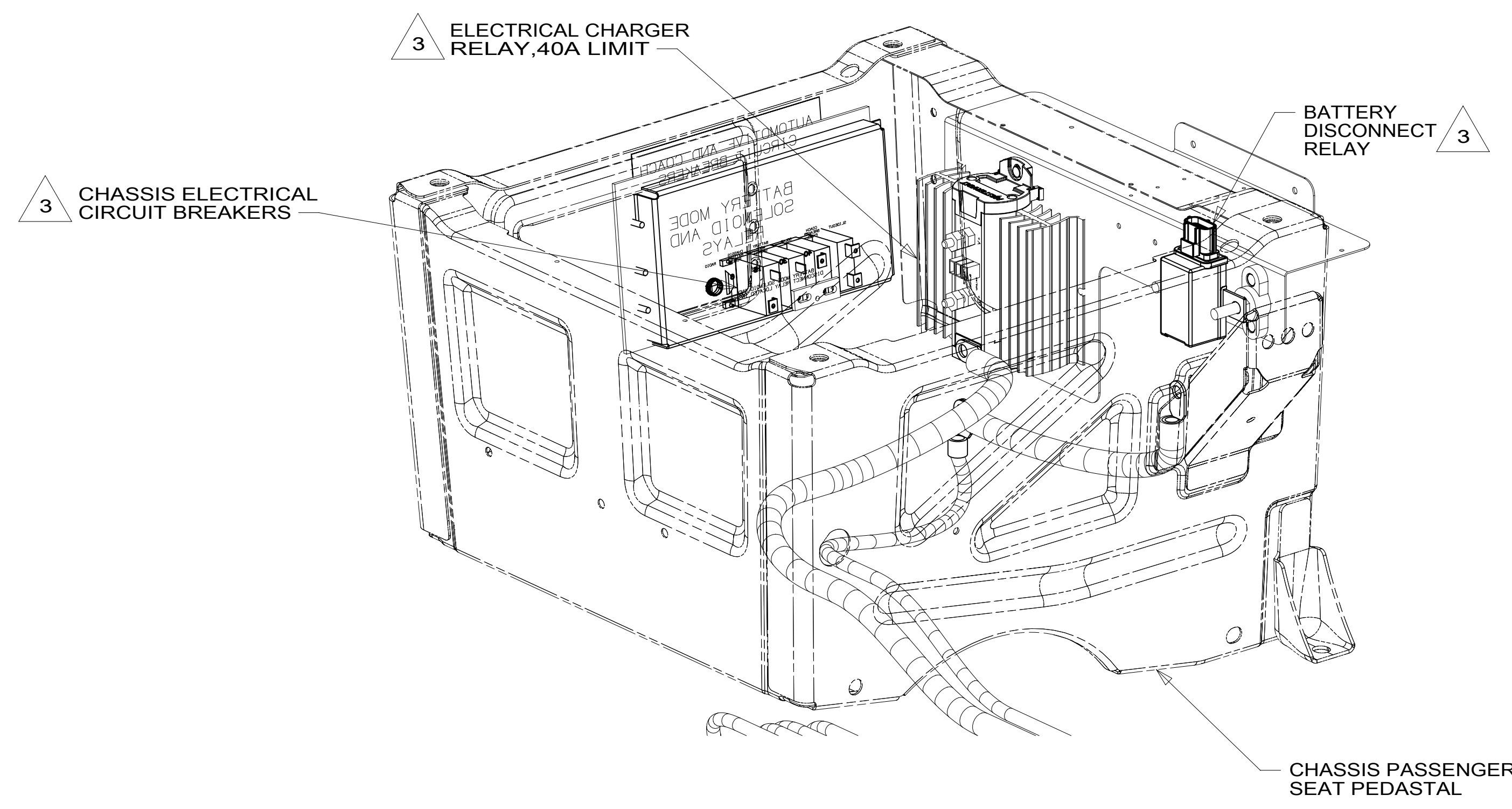
FOR ELECTRICAL TORQUE SPECIFICATIONS SEE DWG NO. 128783-01-000

FOR ELECTRICAL CALLOUTS SEE DWG NO. 121339-01-000

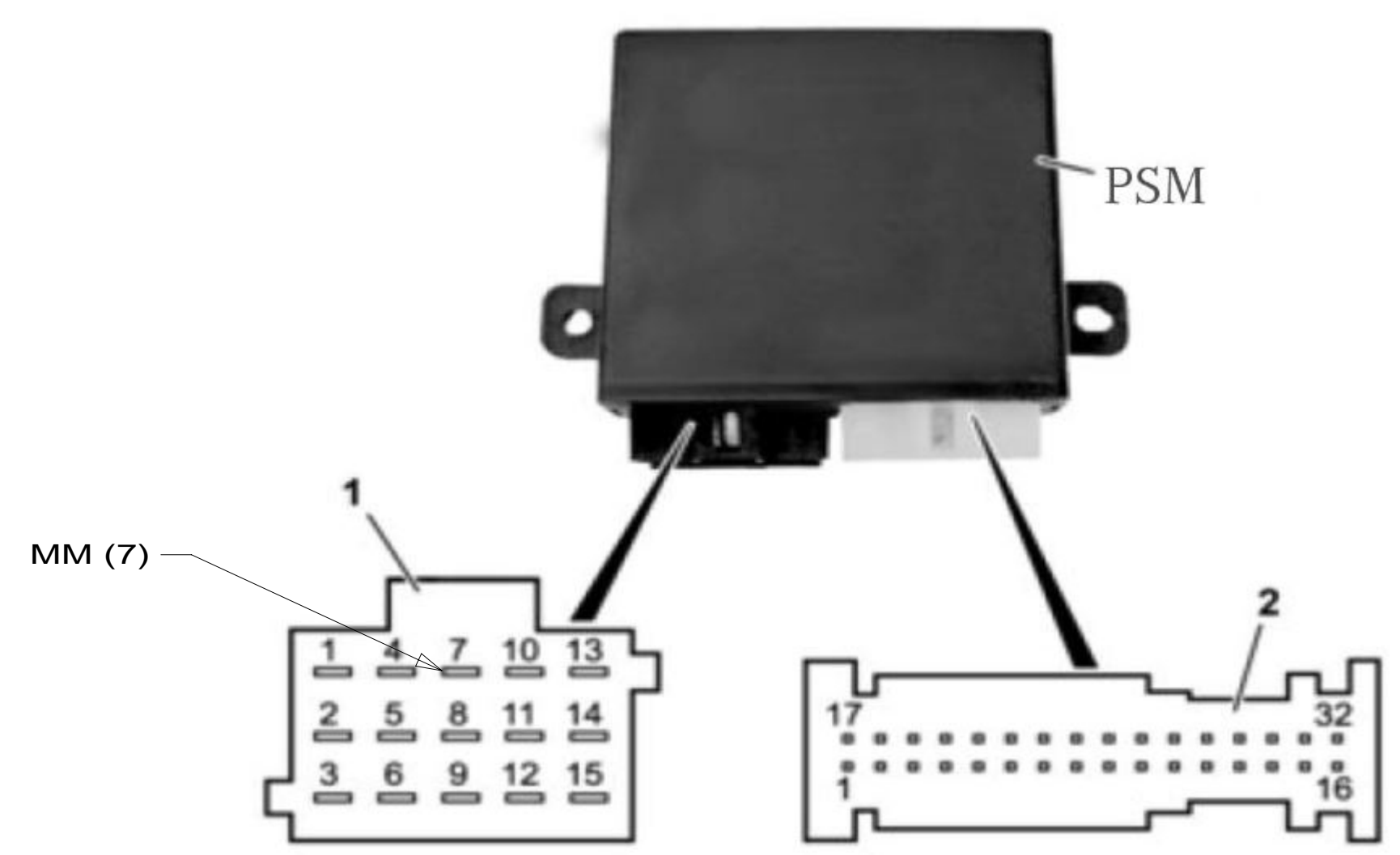
- 282 SOLAR PANEL - 100 WATT
- 1MW MERCD-11030# DSL,D DOOR VAN
- 265 CODES/STANDARDS-CSA/CMVSS
- 1B1 CODES/STANDARDS USA

1B1	265	1MW
DESCRIPTION:		
WIRING INSTL-CHASSIS		
SHEET:	ITEM/PART NO.:	REV
2 OF 3	000177632 / 33322801000	

8 7 6 5 4 3 2 1 29-Mar-2019

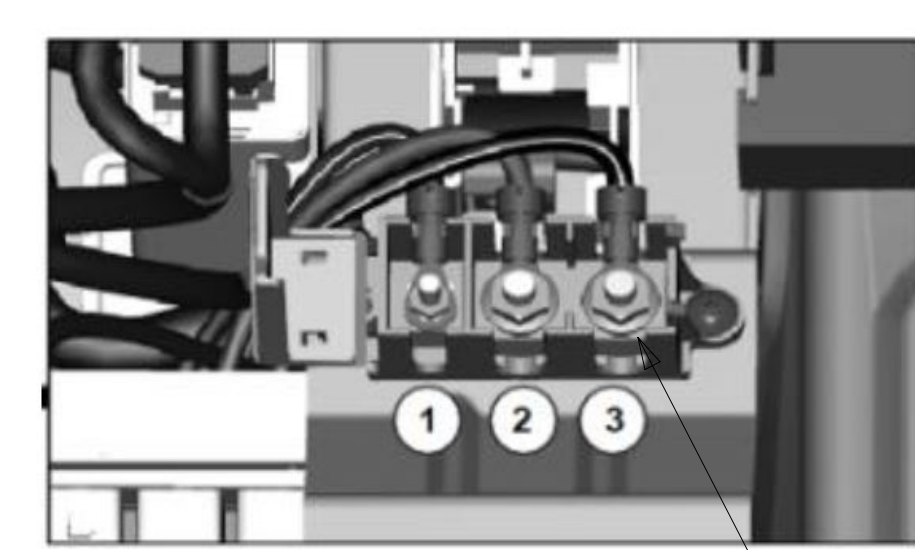


DETAIL CC



DETAIL CA 2

Output Signal	Connector	Pin	Max Amps	Output Type	Comments
Door unlock/ Lock signal	1	11	5	High	
Door unlock/ Lock signal	1	12	5	High	
Park brake engagement	1	2	10	High	
Park brake + Ign. on	1	3	5	High	
Transmission not in P	1	14	5	High	
Marker/ Clearance light	1	7	10	High	WINNEBAGO CIRCUIT MM
Left brake/ Turn signal	1	5	5	High	Turn signal is the master while brake is depressed
Right brake/ Turn signal	1	6	5	High	Turn signal is the master while brake is depressed



Terminal	U [V] / I [A]	wire color
1 st power with engine running	12V / 10A	blue/yellow
2 nd battery direct power	12V / 25A	red/gray
3 rd ignition power	12V / 15A	black/yellow

AEX

3 SEE CHASSIS ELECTRICAL BOX ASM FOR ADDITIONAL INFORMATION.

2 LOCATED UNDER DRIVER'S SEAT.

1. SECURE CONDUIT 41953, TAB AS REQUIRED, OVER ALL WIRES IN CONTACT WITH SHARP EDGES.

NOTES:

FOR ELECTRICAL TORQUE SPECIFICATIONS SEE DWG NO. 128783-01-000

FOR ELECTRICAL CALLOUTS SEE DWG NO. 121339-01-000

1MW MERCD-11030# DSL,D DOOR VAN
 265 CODES/STANDARDS-CSA/CMVSS
 1B1 CODES/STANDARDS USA

1B1 265 1MW

DESCRIPTION: **WIRING INSTL-CHASSIS**

SHEET: 3 OF 3 ITEM/PART NO: 000177632 / 33322801000 REV