

SWITCH  
174757-34-CHT

TO GROUND

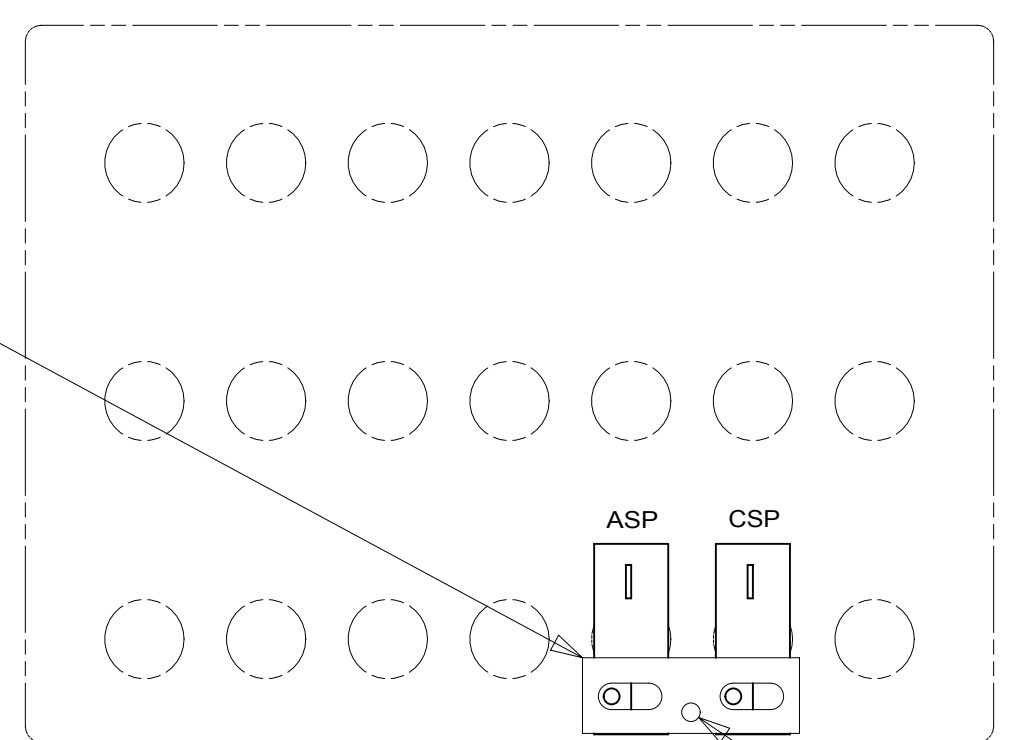
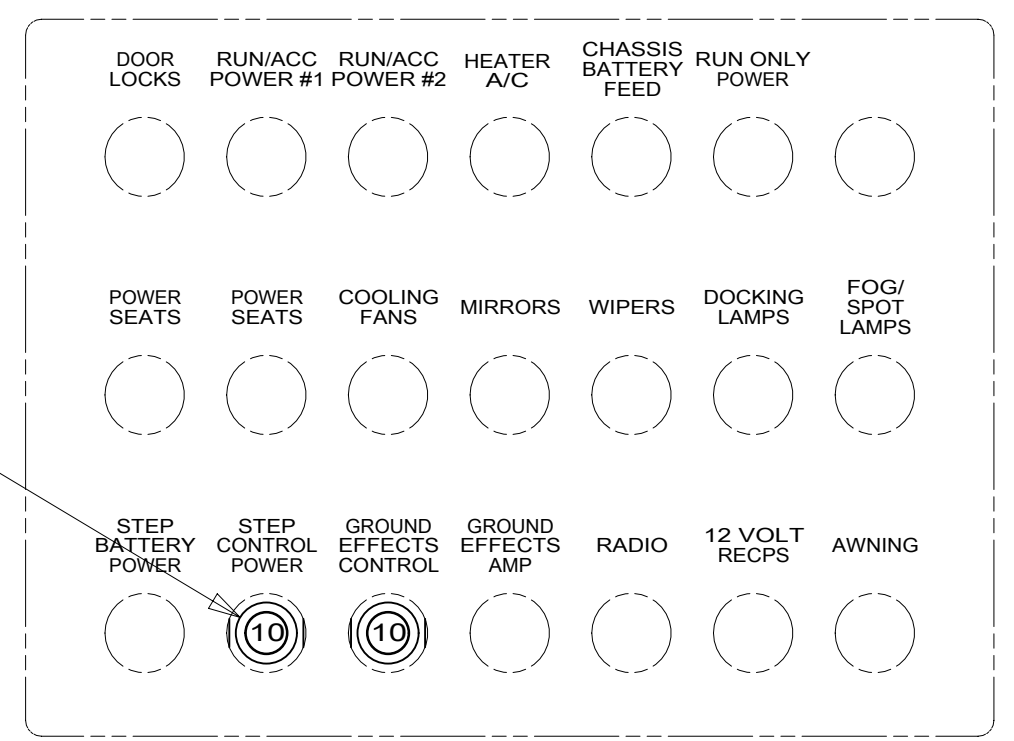
COACH BATTERY

CONTROLLER-BLUE TOOTH, RGB  
000037768 / 318662-01-000  
SCREW  
000G67-08-12U (4)  
AMPLIFIER-SIGNAL, RGB LED  
000037767 / 318661-01-000  
SCREW  
000G67-08-12U (4)  
RELAY-CANISTER, SPDT W/RESIST  
063912-02-000 (2)  
SCREW  
000G67-08-12U

CIRCUIT BREAKER-10 AMP  
093654-05-000 (2)

BUSS BAR CIRCUIT BREAKER  
141744-01-000

WIRE ASM-GROUND EFFECT LIGHTING  
000167125 / 330025-01-000



VIEW AA

VIEW AB

VIEW AC

COACH FEED

- NOTES:
- 4 CLIPS TO BE EQUALLY SPACED ALONG LED STRIP. CENTER CLIPS BETWEEN INDIVIDUAL LEDS.
  - 3 PLUG AMP INPUT INTO ZONE 2 OUTPUT FROM CONTROLLER.
  - 2. CLAMP WIRE ASM-GROUND EFFECT LIGHTING ALONG WITH WIRE ASM-CHASSIS WHERE APPLICABLE. USE TIE-WIRE 8343-04-000 TO SECURE WIRES TO FLOOR SUPPORT FRAME AT LEAST ONCE EVERY 600MM ALL OTHER PLACES.
  - 1 REST WIRE IN FRAME RAIL WHEN APPLICABLE.

FOR ELECTRICAL TORQUE SPECIFICATIONS SEE DWG NO. 128783-01-000

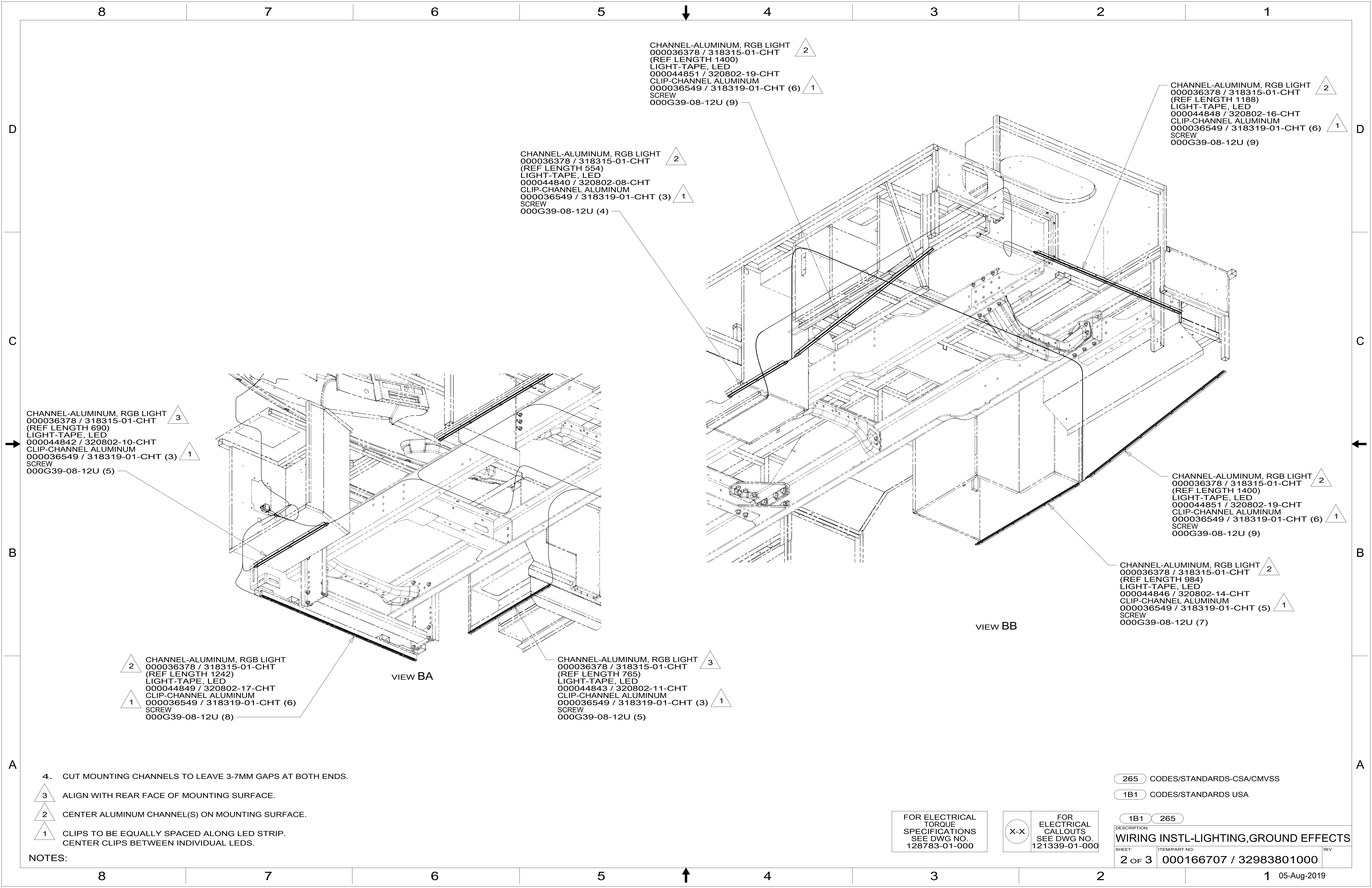
FOR ELECTRICAL CALLOUTS SEE DWG NO. 121339-01-000

265 CODES/STANDARDS-CSA/CMVSS  
1B1 CODES/STANDARDS USA

1B1 265



DSNR:		ALL DIMENSIONS ARE IN MILLIMETERS	
DIFFR:		MATERIAL:	
UNSPECIFIED TOLERANCES:		WEIGHT: (LBS)	FIRST USED:
WHOLE DIM (X)	: 3		19 L38F
ONE-PLACE (X.X)	: 1.5		
TWO-PLACE (X.XX)	: 0.50		
ANGLE	: 1°		
REFER TO ES0018 FOR FASTENER TIGHTENING GUIDELINES			
DESCRIPTION:			
WIRING INSTL-LIGHTING,GROUND EFFECTS			
SHEET:	ITEM/PART NO.:	REV	
1 OF 3	000166707 / 32983801000		



CHANNEL-ALUMINUM, RGB LIGHT  
 000036378 / 318315-01-CHT  
 (REF LENGTH 1400)  
 LIGHT-TAPE, LED  
 000044851 / 320802-19-CHT  
 CLIP-CHANNEL ALUMINUM  
 000036549 / 318319-01-CHT (6) 1  
 SCREW  
 000G39-08-12U (9)

CHANNEL-ALUMINUM, RGB LIGHT  
 000036378 / 318315-01-CHT  
 (REF LENGTH 1188)  
 LIGHT-TAPE, LED  
 000044848 / 320802-16-CHT  
 CLIP-CHANNEL ALUMINUM  
 000036549 / 318319-01-CHT (6) 1  
 SCREW  
 000G39-08-12U (9)

CHANNEL-ALUMINUM, RGB LIGHT  
 000036378 / 318315-01-CHT  
 (REF LENGTH 554)  
 LIGHT-TAPE, LED  
 000044840 / 320802-08-CHT  
 CLIP-CHANNEL ALUMINUM  
 000036549 / 318319-01-CHT (3) 1  
 SCREW  
 000G39-08-12U (4)

CHANNEL-ALUMINUM, RGB LIGHT  
 000036378 / 318315-01-CHT  
 (REF LENGTH 690)  
 LIGHT-TAPE, LED  
 000044842 / 320802-10-CHT  
 CLIP-CHANNEL ALUMINUM  
 000036549 / 318319-01-CHT (3) 1  
 SCREW  
 000G39-08-12U (5)

CHANNEL-ALUMINUM, RGB LIGHT  
 000036378 / 318315-01-CHT  
 (REF LENGTH 1400)  
 LIGHT-TAPE, LED  
 000044851 / 320802-19-CHT  
 CLIP-CHANNEL ALUMINUM  
 000036549 / 318319-01-CHT (6) 1  
 SCREW  
 000G39-08-12U (9)

CHANNEL-ALUMINUM, RGB LIGHT  
 000036378 / 318315-01-CHT  
 (REF LENGTH 984)  
 LIGHT-TAPE, LED  
 000044846 / 320802-14-CHT  
 CLIP-CHANNEL ALUMINUM  
 000036549 / 318319-01-CHT (5) 1  
 SCREW  
 000G39-08-12U (7)

CHANNEL-ALUMINUM, RGB LIGHT  
 000036378 / 318315-01-CHT  
 (REF LENGTH 1242)  
 LIGHT-TAPE, LED  
 000044849 / 320802-17-CHT  
 CLIP-CHANNEL ALUMINUM  
 000036549 / 318319-01-CHT (6) 1  
 SCREW  
 000G39-08-12U (8)

CHANNEL-ALUMINUM, RGB LIGHT  
 000036378 / 318315-01-CHT  
 (REF LENGTH 765)  
 LIGHT-TAPE, LED  
 000044843 / 320802-11-CHT  
 CLIP-CHANNEL ALUMINUM  
 000036549 / 318319-01-CHT (3) 1  
 SCREW  
 000G39-08-12U (5)

VIEW BA

VIEW BB

- NOTES:
- 4. CUT MOUNTING CHANNELS TO LEAVE 3-7MM GAPS AT BOTH ENDS.
  - 3. ALIGN WITH REAR FACE OF MOUNTING SURFACE.
  - 2. CENTER ALUMINUM CHANNEL(S) ON MOUNTING SURFACE.
  - 1. CLIPS TO BE EQUALLY SPACED ALONG LED STRIP. CENTER CLIPS BETWEEN INDIVIDUAL LEDS.

265 CODES/STANDARDS-CSA/CMVSS  
 1B1 CODES/STANDARDS USA

FOR ELECTRICAL TORQUE SPECIFICATIONS SEE DWG NO. 128783-01-000

FOR ELECTRICAL CALLOUTS SEE DWG NO. 121339-01-000

DESCRIPTION:	1B1 265	
WIRING INSTL-LIGHTING,GROUND EFFECTS		
SHEET:	ITEM/PART NO.:	REV
2 OF 3	000166707 / 32983801000	

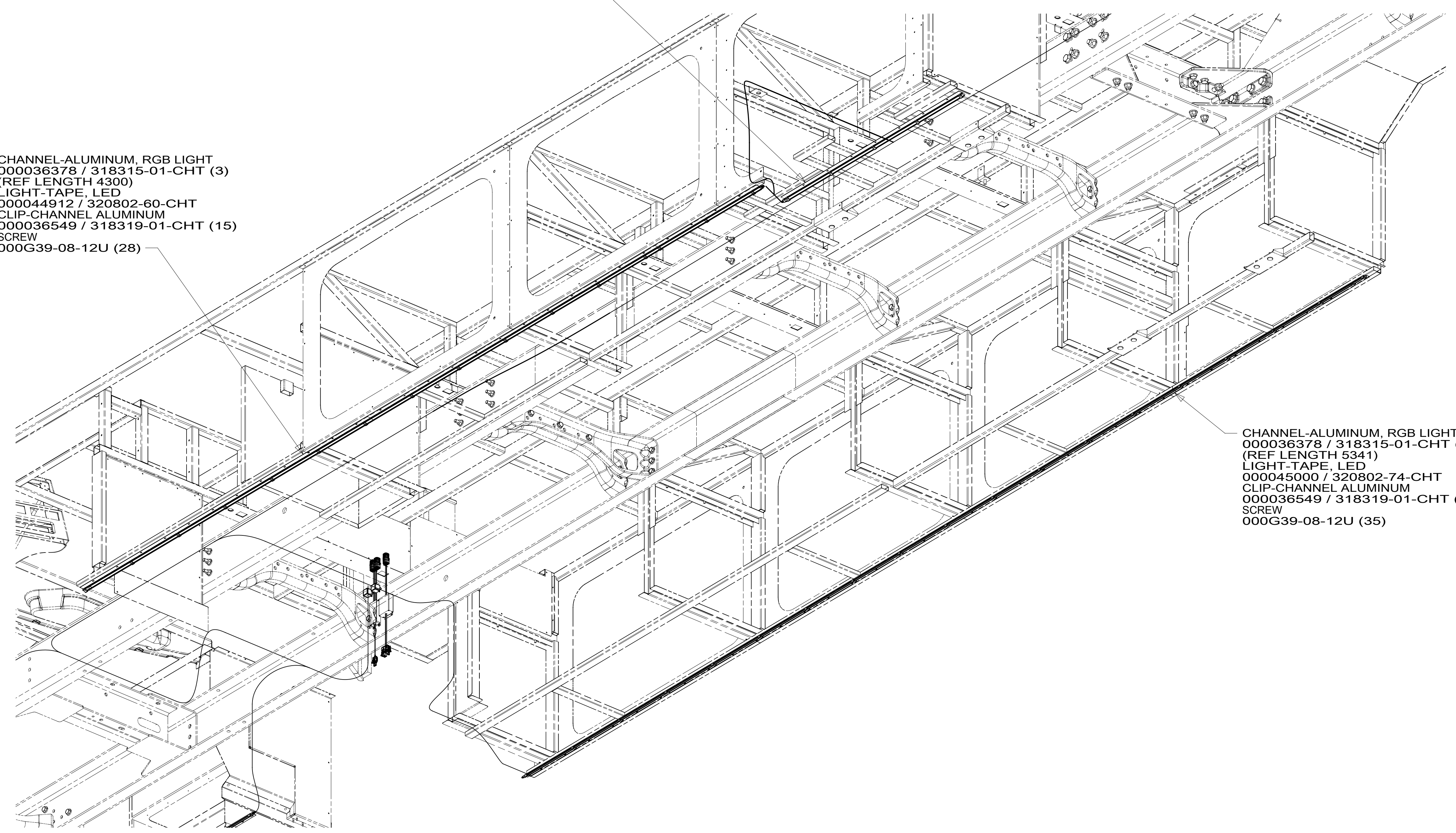
8 7 6 5 4 3 2 1

D  
C  
B  
A

2 CHANNEL-ALUMINUM, RGB LIGHT  
000036378 / 318315-01-CHT  
(REF LENGTH 1126)  
LIGHT-TAPE, LED  
000044848 / 320802-16-CHT  
1 CLIP-CHANNEL ALUMINUM  
000036549 / 318319-01-CHT (5)  
SCREW  
000G39-08-12U (5)

2 CHANNEL-ALUMINUM, RGB LIGHT  
000036378 / 318315-01-CHT (3)  
(REF LENGTH 4300)  
LIGHT-TAPE, LED  
000044912 / 320802-60-CHT  
1 CLIP-CHANNEL ALUMINUM  
000036549 / 318319-01-CHT (15)  
SCREW  
000G39-08-12U (28)

CHANNEL-ALUMINUM, RGB LIGHT 2  
000036378 / 318315-01-CHT (3)  
(REF LENGTH 5341)  
LIGHT-TAPE, LED  
000045000 / 320802-74-CHT  
1 CLIP-CHANNEL ALUMINUM  
000036549 / 318319-01-CHT (19)  
SCREW  
000G39-08-12U (35)



VIEW CA

- NOTES:
- 3. CUT MOUNTING CHANNELS TO LEAVE 3-7MM GAPS AT ENDS.
  - 2 CENTER ALUMINUM CHANNELS ON MOUNTING SURFACE.
  - 1 CLIPS TO BE EQUALLY SPACED ALONG LED STRIP.  
CENTER CLIPS BETWEEN INDIVIDUAL LEDS.

265 CODES/STANDARDS-CSA/CMVSS  
1B1 CODES/STANDARDS USA

FOR ELECTRICAL  
TORQUE  
SPECIFICATIONS  
SEE DWG NO.  
128783-01-000

FOR  
ELECTRICAL  
CALLOUTS  
SEE DWG NO.  
121339-01-000

DESCRIPTION: <b>WIRING INSTL-LIGHTING,GROUND EFFECTS</b>	
SHEET: <b>3 OF 3</b>	ITEM/PART NO.: <b>000166707 / 32983801000</b>
REV	

8 7 6 5 4 3 2 1 05-Aug-2019