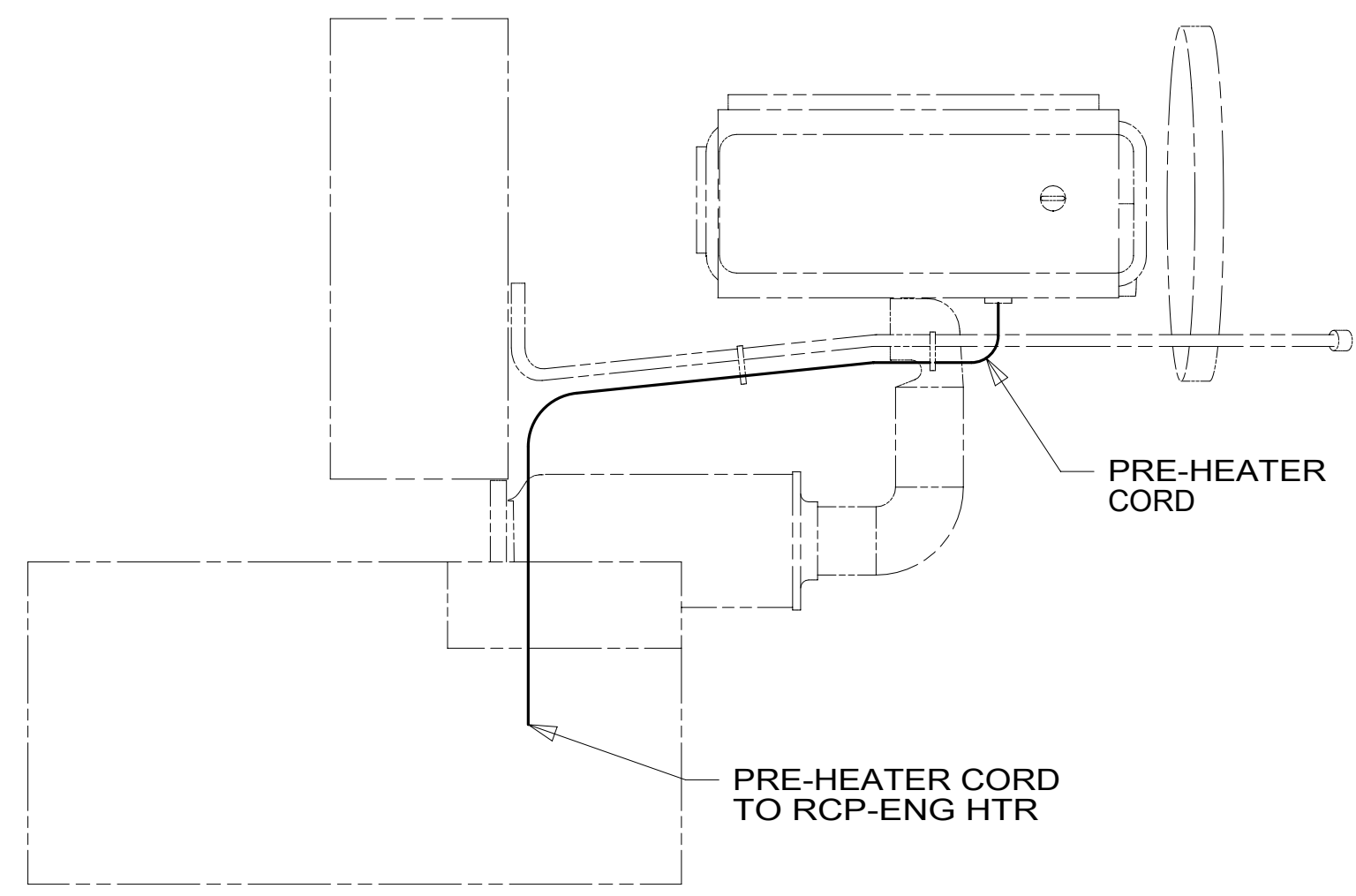


- 6 CLAMP 83610-01-000, SCREW G39-08-12U
- 5 CLAMP 10497-03-000, SCREW G39-08-12U
- 4 USE TIE-WIRE 8343-04-000 TO SECURE WIRES TO FLOOR SUPPORT FRAME AT LEAST ONCE EVERY 600MM.
- 3 SECURE CORD AWAY FROM ALL MOVING PARTS AND EXHAUST WITH WIRE-TIE 93147-01-000 AS REQUIRED
- 2 SEE WIRING INSTL-FRONT END FOR ADDITIONAL INFORMATION.
- 1 REST WIRE IN FRAME RAIL WHEN APPLICABLE.

NOTES:



DETAIL AA 3

FOR ELECTRICAL TORQUE SPECIFICATIONS SEE DWG NO. 128783-01-000

FOR ELECTRICAL CALLOUTS SEE DWG NO. 121339-01-000

- 265 CODES/STANDARDS-CSA/CMVSS
- 1B1 CODES/STANDARDS USA

WINNEBAGO
COPYRIGHT 2016 WINNEBAGO INDUSTRIES, INC.

DSNR:	ALL DIMENSIONS ARE IN MILLIMETERS	
DIFFR:	MATERIAL:	
UNSPECIFIED TOLERANCES:	WEIGHT: (LBS)	FIRST USED:
WHOLE DIM (X) : 3		18 L38F
ONE-PLACE (X.X) : 1.5		
TWO-PLACE (X.XX) : 0.50		
ANGLE : 1°		
REFER TO ES0018 FOR FASTENER TIGHTENING GUIDELINES		
WIRING INSTL-CHASSIS		
SHEET: 1 OF 8	ITEM/PART NO: 000166664 / 32981301000	REV:
REF: 1 13-Dec-2018		

8 7 6 5 4 3 2 1



D

D

CABLE ASM (YEL) FROM COACH BATTERY FUSE TO COACH SIDE OF AUX START SOLENOID	175207-52-037
CABLE ASM (ORG) FROM COACH BATTERY TO INVERTER FUSE	175207-62-003
CABLE ASM (ORG) FROM INVERTER FUSE TO INVERTER DISCONNECT	175207-62-012
CABLE ASM (ORG) FROM INVERTER DISCONNECT TO INVERTER POSITIVE TERMINAL	175207-62-005
CABLE ASM (BLK) FROM BATTERY TO INVERTER NEGATIVE TERMINAL	175211-01-018
CABLE ASM (BLK) FROM COACH BATTERY TO FRAME RAIL GROUND	175211-02-030
CABLE ASM (BLU) FROM CHASSIS ISOLATED STUD TO LEVELING SYSTEM PUMP	141416-26-108
CABLE ASM (BLK) FROM LEVELING SYSTEM TO FRAME RAIL GROUND	133567-11-005
CABLE ASM (GRN) FROM COACH BAT DISC RELAY FUSE TO PASS THRU STUD IN FRONT LEFT COMPT	175207-42-122
CABLE ASM (GRN) FROM PASS THRU STUD IN FRONT LEFT COMPT TO GENERATOR	175207-42-024
CABLE ASM (BLK) FROM GENERATOR TO FRAME RAIL GROUND BOLT	175211-02-013
CABLE ASM (YEL) JUMPER BETWEEN POSITIVE POSTS ON COACH BATTERY	141417-51-002 (3)
CABLE ASM (BLK) JUMPER BETWEEN NEGATIVE POSTS ON COACH BATTERY	133568-11-002 (3)
CABLE ASM (RED) JUMPER BETWEEN POSITIVE POSTS IN LEFT FRONT COMPT	141417-32-002
CABLE ASM-TEMPERATURE,BATTERY	175385-03-000
CABLE ASM (RED) FROM CHASSIS BATTERY FUSE TO CHASSIS SIDE OF AUX START SOLENOID	175207-35-009
CABLE ASM (RED) FROM CHASSIS BATTERY TO CHASSIS BATTERY FUSE	175207-35-005
CABLE ASM (YEL) FROM COACH BATTERY TO COACH BATTERY FUSE	175207-52-003

C

C



B

B

A

A

8 7 6 5 4 3 2 1

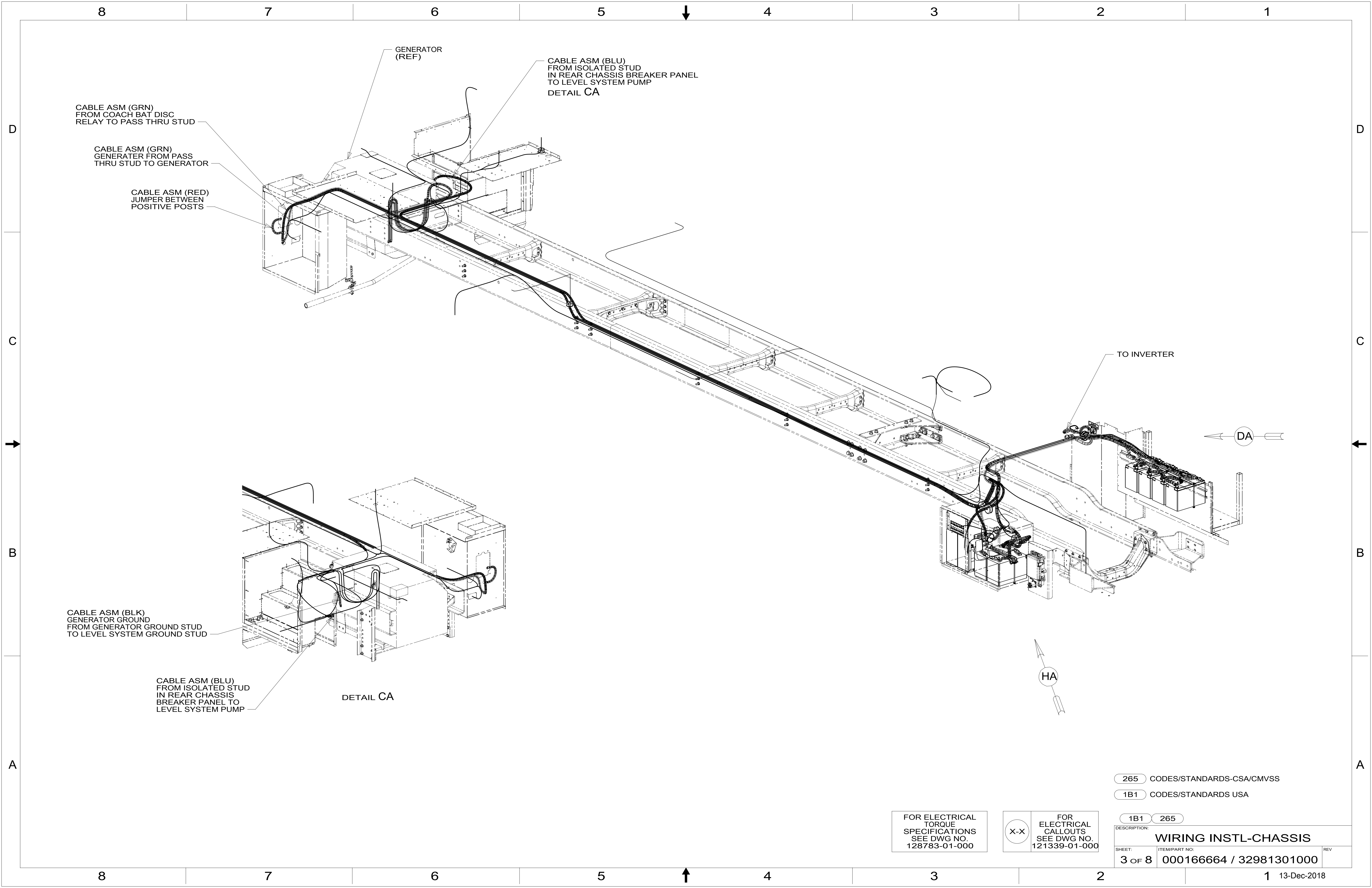


265 CODES/STANDARDS-CSA/CMVSS
 1B1 CODES/STANDARDS USA

FOR ELECTRICAL TORQUE SPECIFICATIONS SEE DWG NO. 128783-01-000

FOR ELECTRICAL CALLOUTS SEE DWG NO. 121339-01-000

1B1 265
 DESCRIPTION: **WIRING INSTL-CHASSIS**
 SHEET: 2 OF 8 ITEM/PART NO: 000166664 / 32981301000 REV



CABLE ASM (GRN)
FROM COACH BAT DISC
RELAY TO PASS THRU STUD

CABLE ASM (GRN)
GENERATOR FROM PASS
THRU STUD TO GENERATOR

CABLE ASM (RED)
JUMPER BETWEEN
POSITIVE POSTS

GENERATOR
(REF)

CABLE ASM (BLU)
FROM ISOLATED STUD
IN REAR CHASSIS BREAKER PANEL
TO LEVEL SYSTEM PUMP
DETAIL CA

CABLE ASM (BLK)
GENERATOR GROUND
FROM GENERATOR GROUND STUD
TO LEVEL SYSTEM GROUND STUD

CABLE ASM (BLU)
FROM ISOLATED STUD
IN REAR CHASSIS
BREAKER PANEL TO
LEVEL SYSTEM PUMP

DETAIL CA

TO INVERTER

DA

HA

265 CODES/STANDARDS-CSA/CMVSS

1B1 CODES/STANDARDS USA

1B1 265

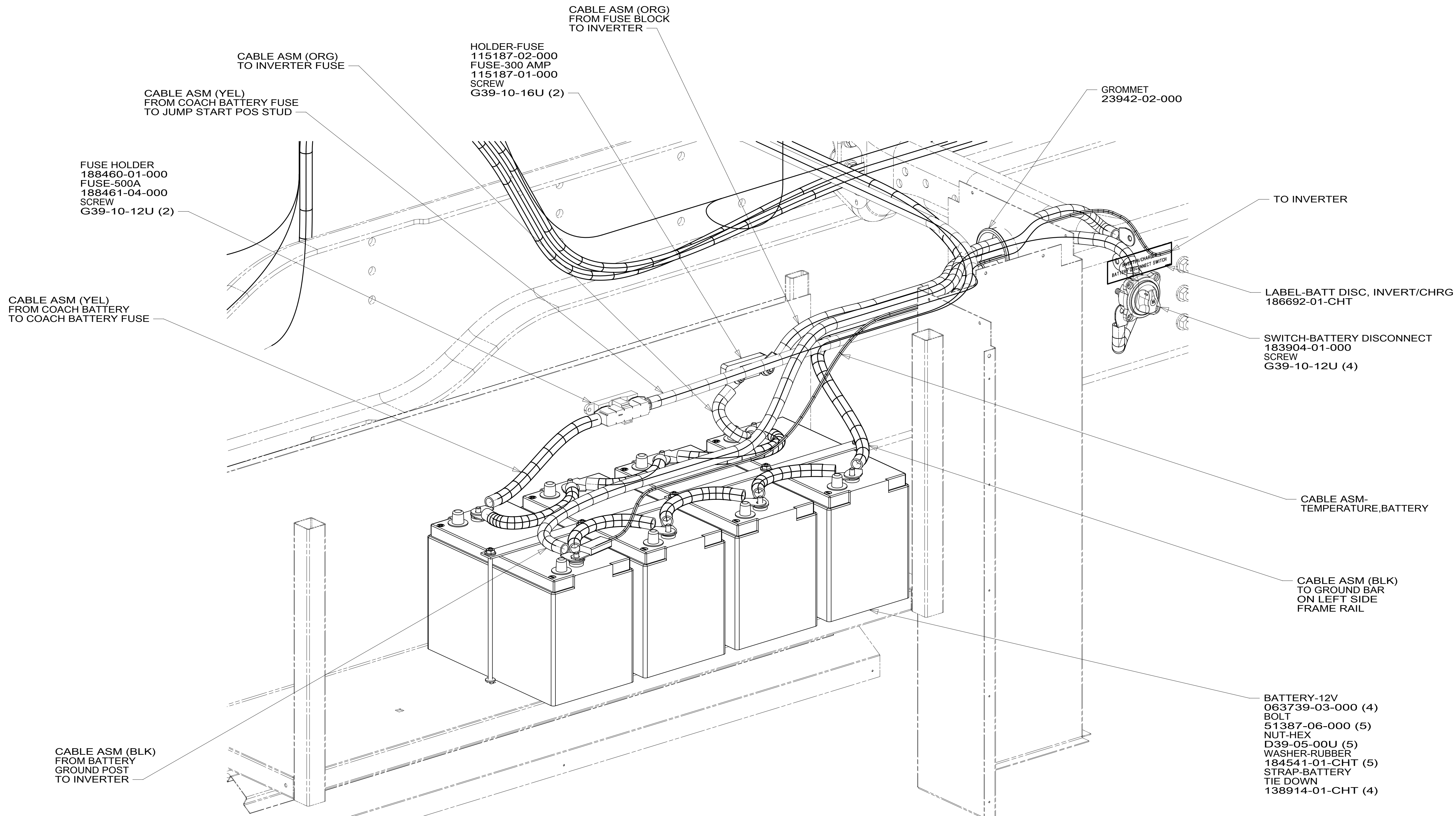
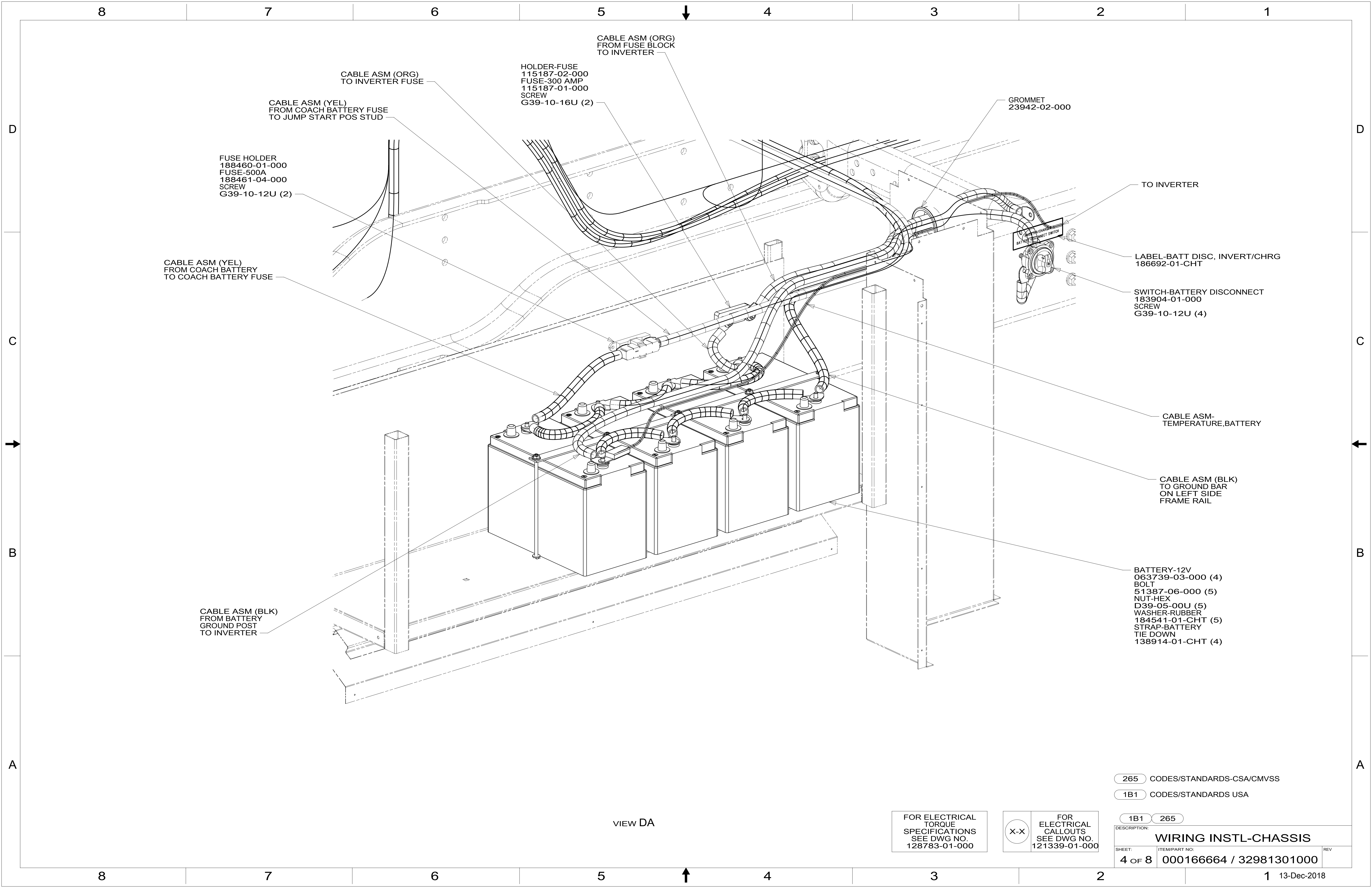
FOR ELECTRICAL
TORQUE
SPECIFICATIONS
SEE DWG NO.
128783-01-000

FOR
ELECTRICAL
CALLOUTS
SEE DWG NO.
121339-01-000

DESCRIPTION:
WIRING INSTL-CHASSIS

SHEET: 3 OF 8 ITEM/PART NO: 000166664 / 32981301000 REV

1 13-Dec-2018



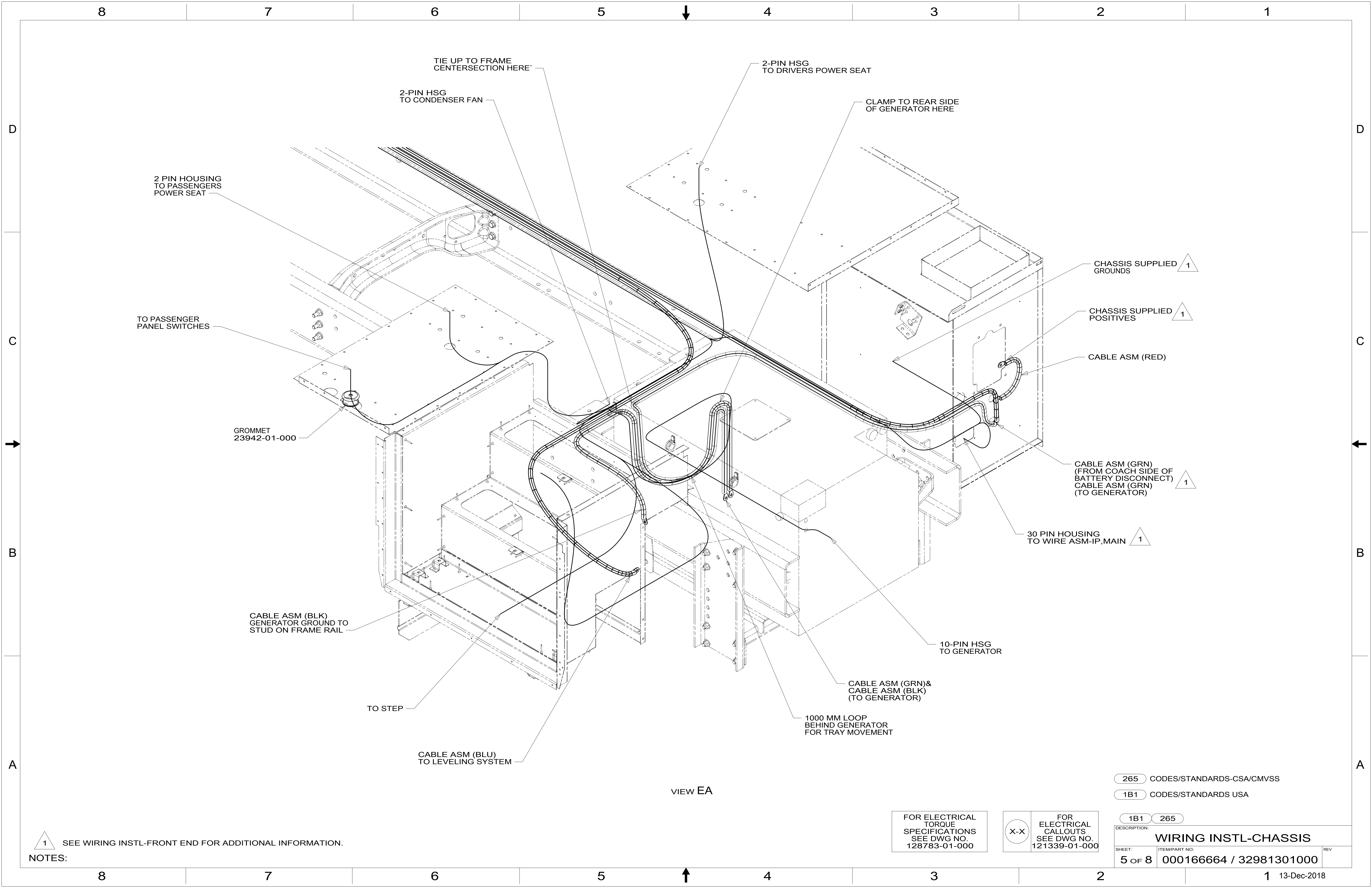
VIEW DA

FOR ELECTRICAL
TORQUE
SPECIFICATIONS
SEE DWG NO.
128783-01-000

FOR
ELECTRICAL
CALLOUTS
SEE DWG NO.
121339-01-000

- 265 CODES/STANDARDS-CSA/CMVSS
- 1B1 CODES/STANDARDS USA

DESCRIPTION: WIRING INSTL-CHASSIS	
SHEET: 4 OF 8	ITEM/PART NO.: 000166664 / 32981301000
REV 1 13-Dec-2018	



VIEW EA

NOTES:
 1 SEE WIRING INSTL-FRONT END FOR ADDITIONAL INFORMATION.

FOR ELECTRICAL TORQUE SPECIFICATIONS SEE DWG NO. 128783-01-000

FOR ELECTRICAL CALLOUTS SEE DWG NO. 121339-01-000

265 CODES/STANDARDS-CSA/CMVSS
 1B1 CODES/STANDARDS USA

DESCRIPTION:		1B1	265
WIRING INSTL-CHASSIS			
SHEET:	ITEM/PART NO.:	REV	
5 OF 8	000166664 / 32981301000		

D

C

B

A

D

C

B

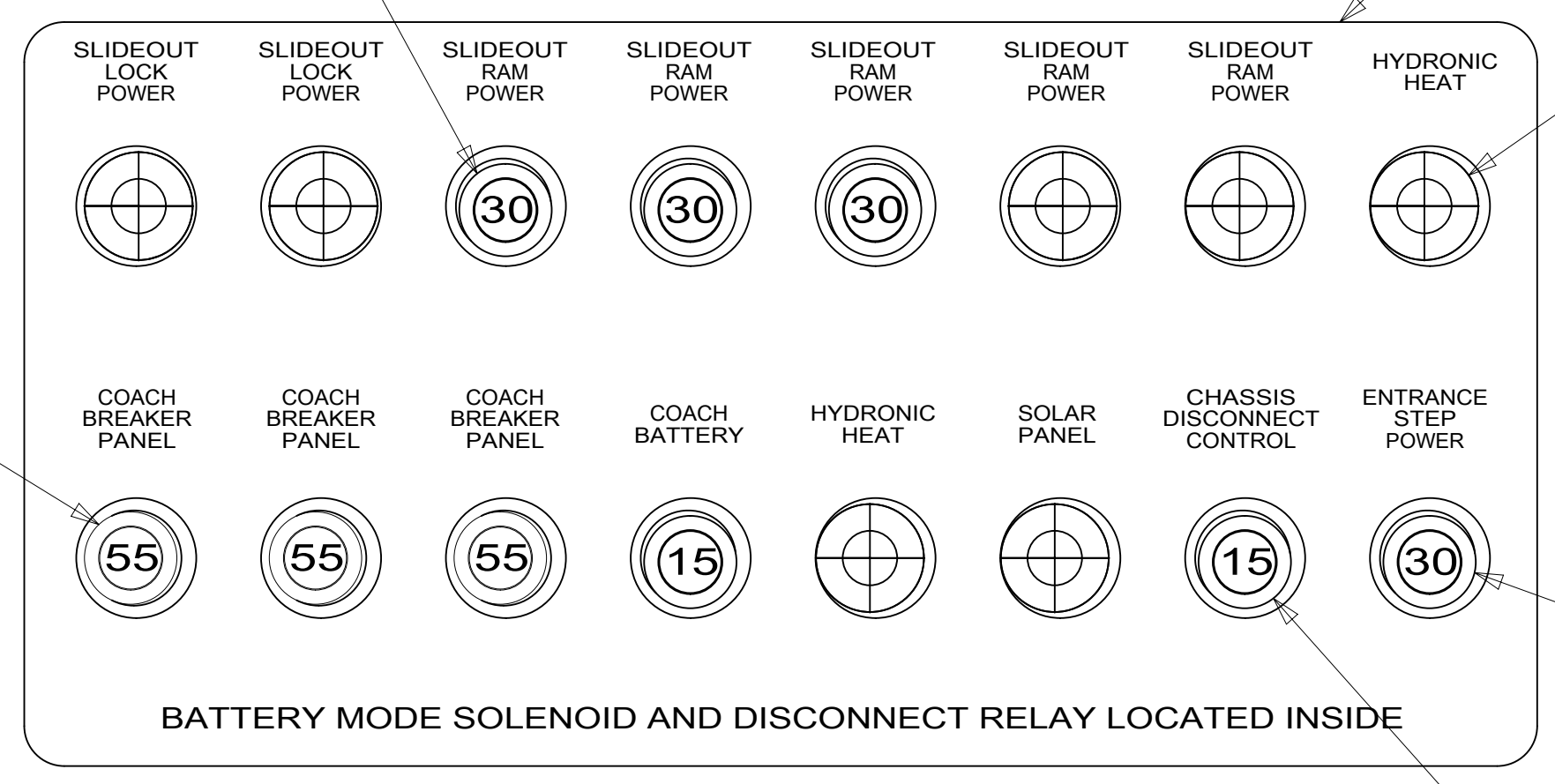
A

1
CIRCUIT BREAKER-30 AMP
93655-02-000 (3)
SCREW
G52-06-05U (3)
SPACER-CIRCUIT BREAKER
141789-01-000 (3)

LABEL-CIRCUIT BREAKER
93236-77-000

PLUG-PLASTIC
81211-06-000 (6)

CIRCUIT BREAKER-55 AMP
113482-01-000 (3)



CIRCUIT BREAKER-30 AMP
93655-02-000
SCREW
G52-06-05U
SPACER-CIRCUIT BREAKER
141789-01-000

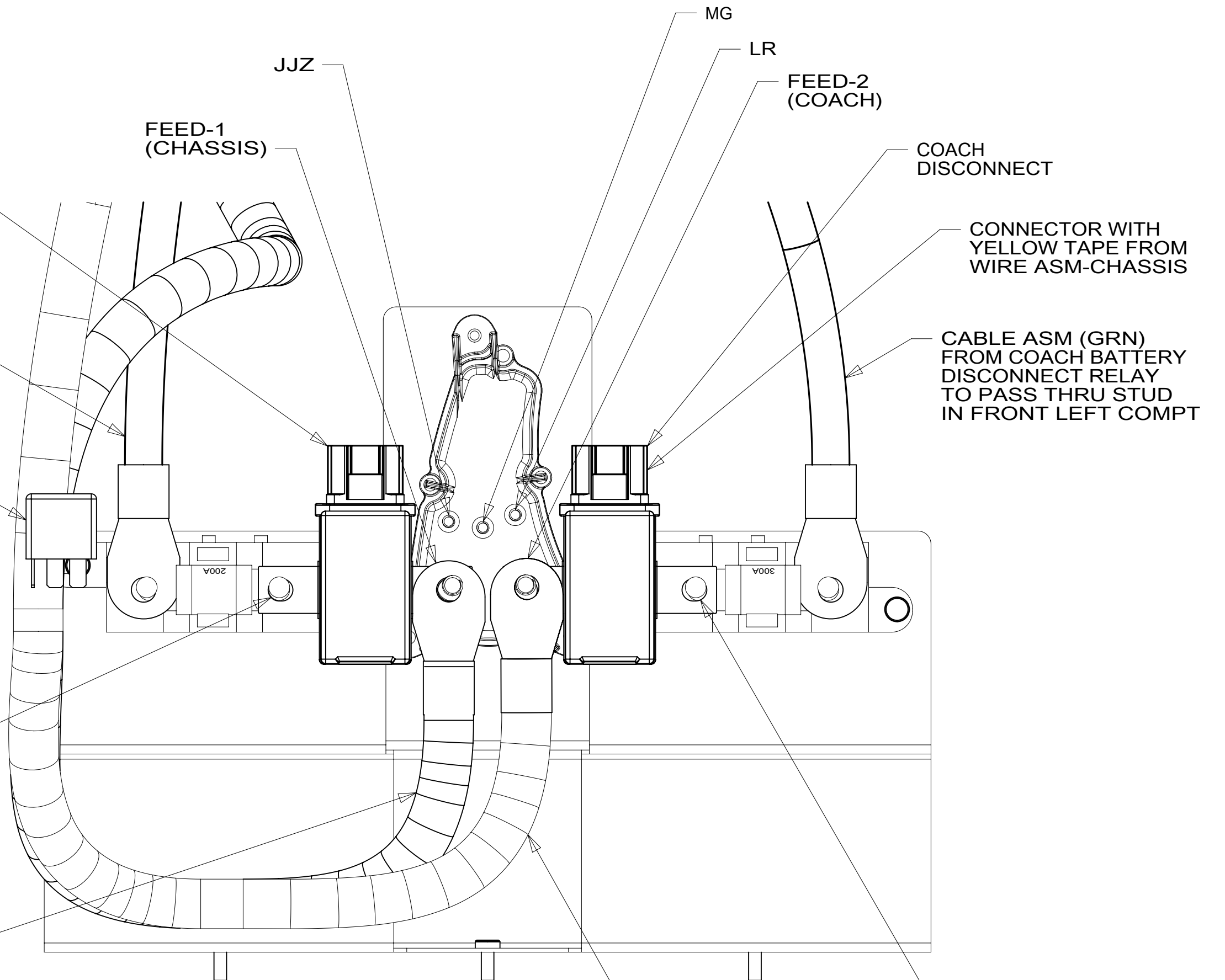
CIRCUIT BREAKER-15 AMP
93654-02-000 (2)
SCREW
G52-06-05U
SPACER-CIRCUIT BREAKER
141789-01-000 (2)

DETAIL FA

RELAY
63912-02-000
(CHASSIS BATTERY
DISCONNECT LOCKOUT)
PLUG INTO WIRE ASM-CHASSIS

CONNECT COACH
BREAKER FEED HERE

CABLE ASM (RED)
FROM CHASSIS BATTERY
TO CHASSIS SIDE OF
AUX START SOLENOID



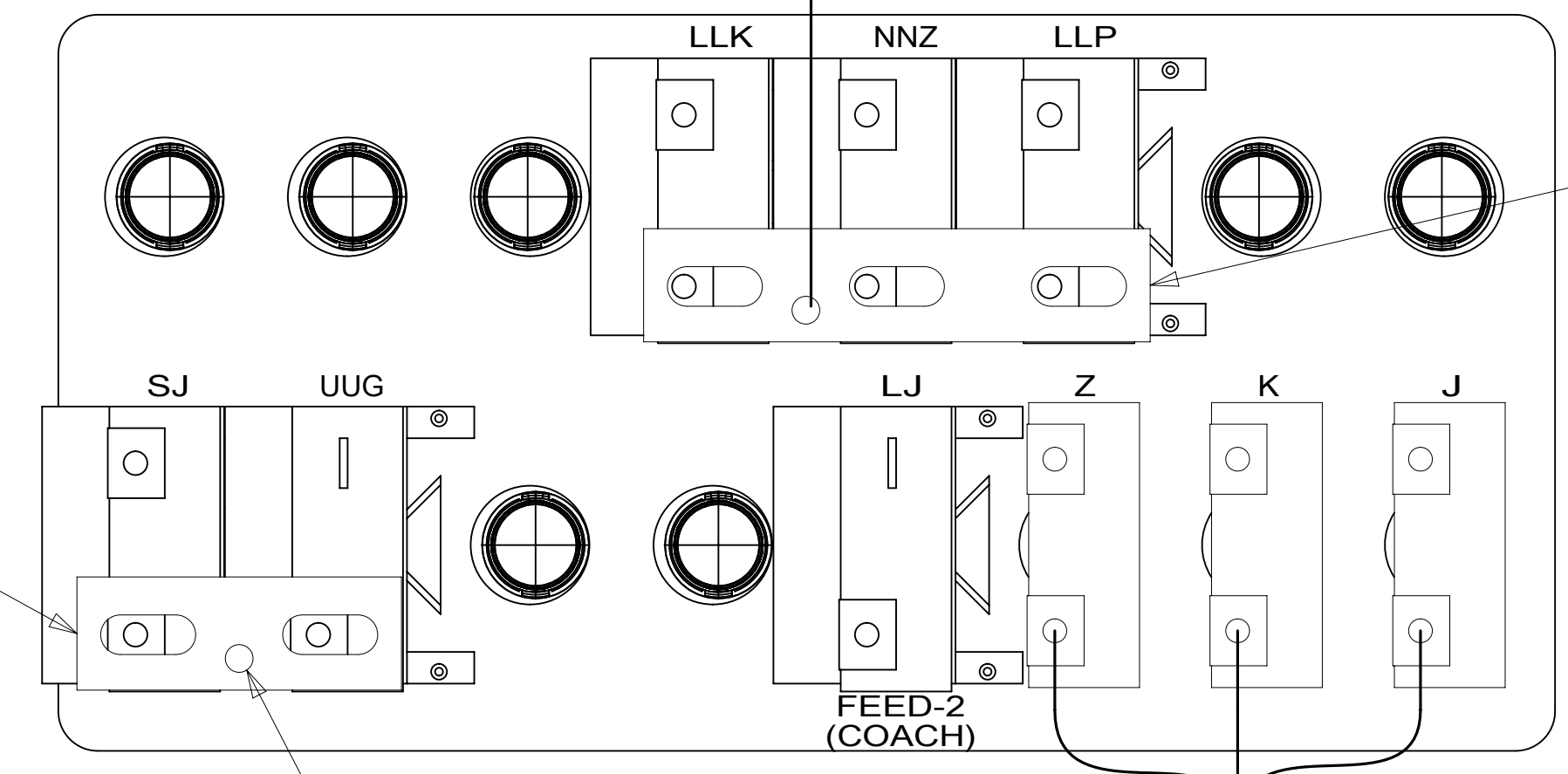
VIEW FB

TO
CHASSIS BATTERY
DISCONNECT

CABLE ASM-6 GA
140228-01-006

BUSS BAR
141744-02-000

BUSS BAR
141744-01-000



FROM
DISCONNECTED
SIDE OF COACH
DISCONNECT
VIEW FB

DETAIL FA
(BACK VIEW-COMPONENTS)

1
REPLACE EXISTING SCREW TO PROPERLY ATTACH
BREAKER TO BUSS BAR.

NOTES:

265 CODES/STANDARDS-CSA/CMVSS
1B1 CODES/STANDARDS USA

FOR ELECTRICAL
TORQUE
SPECIFICATIONS
SEE DWG NO.
128783-01-000

FOR
ELECTRICAL
CALLOUTS
SEE DWG NO.
121339-01-000

DESCRIPTION:	1B1 265	
WIRING INSTL-CHASSIS		
SHEET:	ITEM/PART NO:	REV
6 OF 8	000166664 / 32981301000	

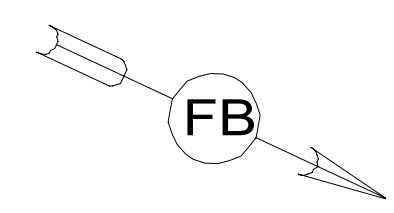
8 7 6 5 4 3 2 1

D
C
B
A

PANEL-CLOSEOUT,
ELECTRICAL
175347-06-CHT
SCREW
G11-08-12U (4)

CIRCUIT BREAKERS
DETAIL FA

PANEL-CLOSEOUT,
ELECTRICAL
175347-02-CHT (2)
SCREW
G39-10-12U (4)



COACH BATTERY
REMOTE CONNECTION

ELECTRICAL BOX
(CHASSIS SUPPLIED)
(REF)

CHASSIS
BATTERIES
(REF)

FREIGHTLINER
STARTER CABLE

VIEW GA

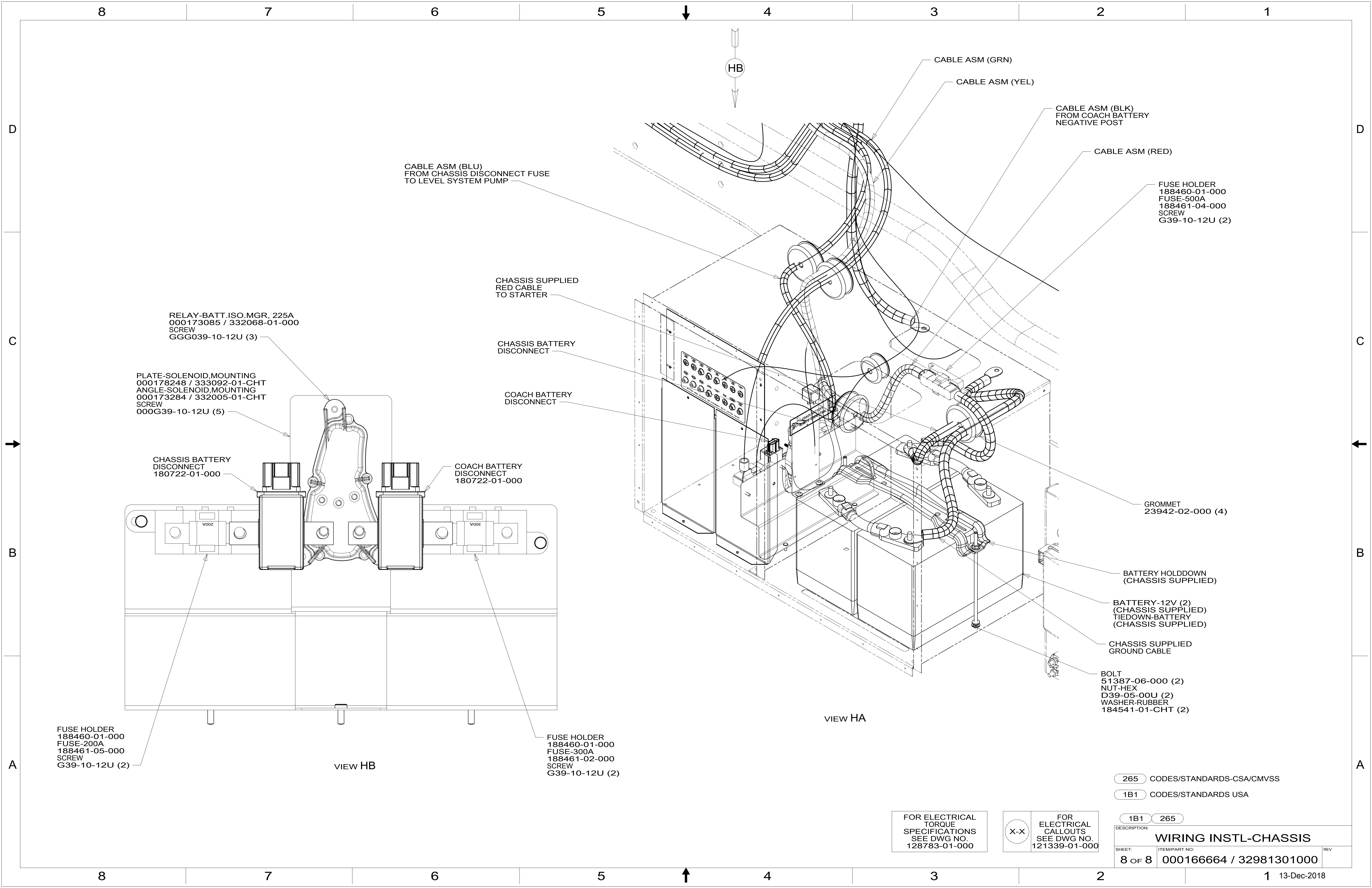
FOR ELECTRICAL
TORQUE
SPECIFICATIONS
SEE DWG NO.
128783-01-000

FOR
ELECTRICAL
CALLOUTS
SEE DWG NO.
121339-01-000

265 CODES/STANDARDS-CSA/CMVSS
1B1 CODES/STANDARDS USA

DESCRIPTION:		1B1 265
WIRING INSTL-CHASSIS		
SHEET:	ITEM/PART NO.:	REV
7 OF 8	000166664 / 32981301000	

8 7 6 5 4 3 2 1 13-Dec-2018



CABLE ASM (BLU)
FROM CHASSIS DISCONNECT FUSE
TO LEVEL SYSTEM PUMP

CABLE ASM (GRN)

CABLE ASM (YEL)

CABLE ASM (BLK)
FROM COACH BATTERY
NEGATIVE POST

CABLE ASM (RED)

FUSE HOLDER
188460-01-000
FUSE-500A
188461-04-000
SCREW
G39-10-12U (2)

CHASSIS SUPPLIED
RED CABLE
TO STARTER

CHASSIS BATTERY
DISCONNECT

COACH BATTERY
DISCONNECT

RELAY-BATT ISO.MGR. 225A
000173085 / 332068-01-000
SCREW
GGG039-10-12U (3)

PLATE-SOLENOID, MOUNTING
000178248 / 333092-01-CHT
ANGLE-SOLENOID, MOUNTING
000173284 / 332005-01-CHT
SCREW
000G39-10-12U (5)

CHASSIS BATTERY
DISCONNECT
180722-01-000

COACH BATTERY
DISCONNECT
180722-01-000

GROMMET
23942-02-000 (4)

BATTERY HOLDDOWN
(CHASSIS SUPPLIED)

BATTERY-12V (2)
(CHASSIS SUPPLIED)
TIEDOWN-BATTERY
(CHASSIS SUPPLIED)

CHASSIS SUPPLIED
GROUND CABLE

BOLT
51387-06-000 (2)
NUT-HEX
D39-05-00U (2)
WASHER-RUBBER
184541-01-CHT (2)

FUSE HOLDER
188460-01-000
FUSE-200A
188461-05-000
SCREW
G39-10-12U (2)

FUSE HOLDER
188460-01-000
FUSE-300A
188461-02-000
SCREW
G39-10-12U (2)

VIEW HA

VIEW HB

265 CODES/STANDARDS-CSA/CMVSS

1B1 CODES/STANDARDS USA

1B1 265

FOR ELECTRICAL
TORQUE
SPECIFICATIONS
SEE DWG NO.
128783-01-000

FOR
ELECTRICAL
CALLOUTS
SEE DWG NO.
121339-01-000

DESCRIPTION:
WIRING INSTL-CHASSIS

SHEET: 8 OF 8 ITEM/PART NO: 000166664 / 32981301000 REV