

8 7 6 5 4 3 2 1

D

D

C

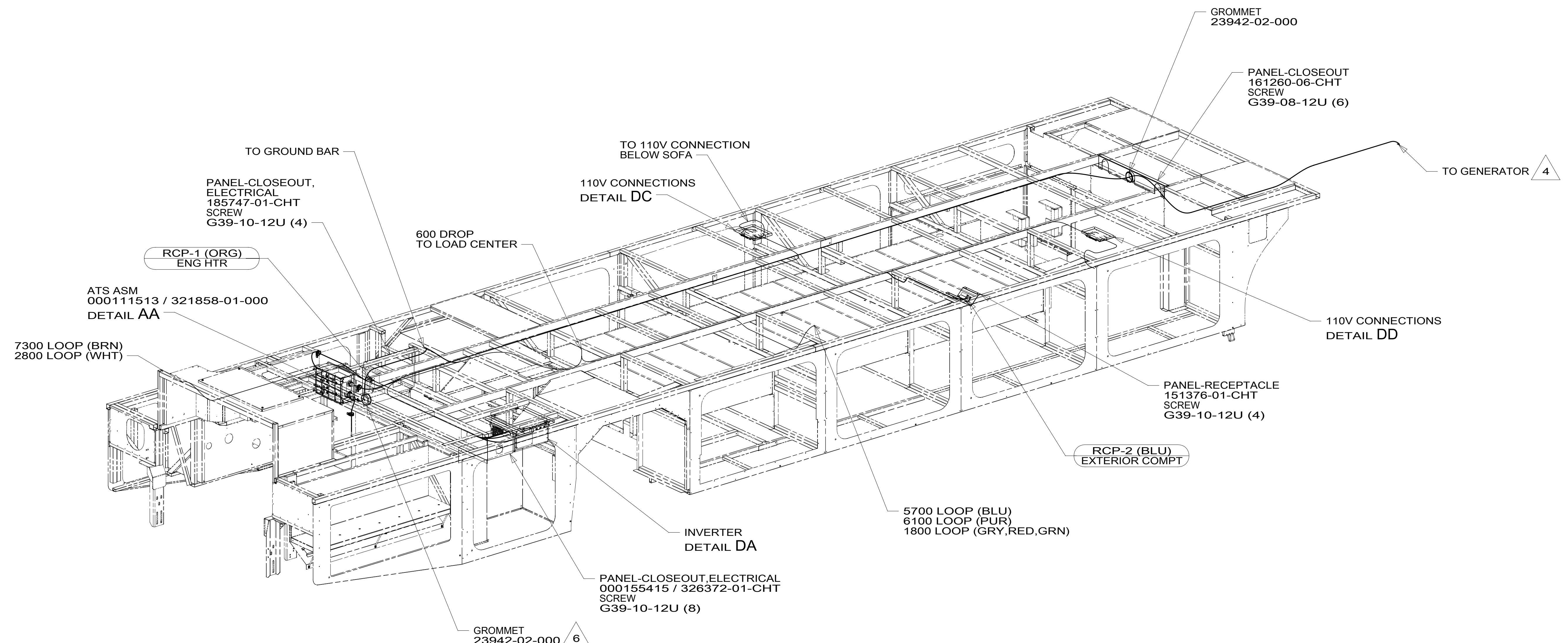
C

B

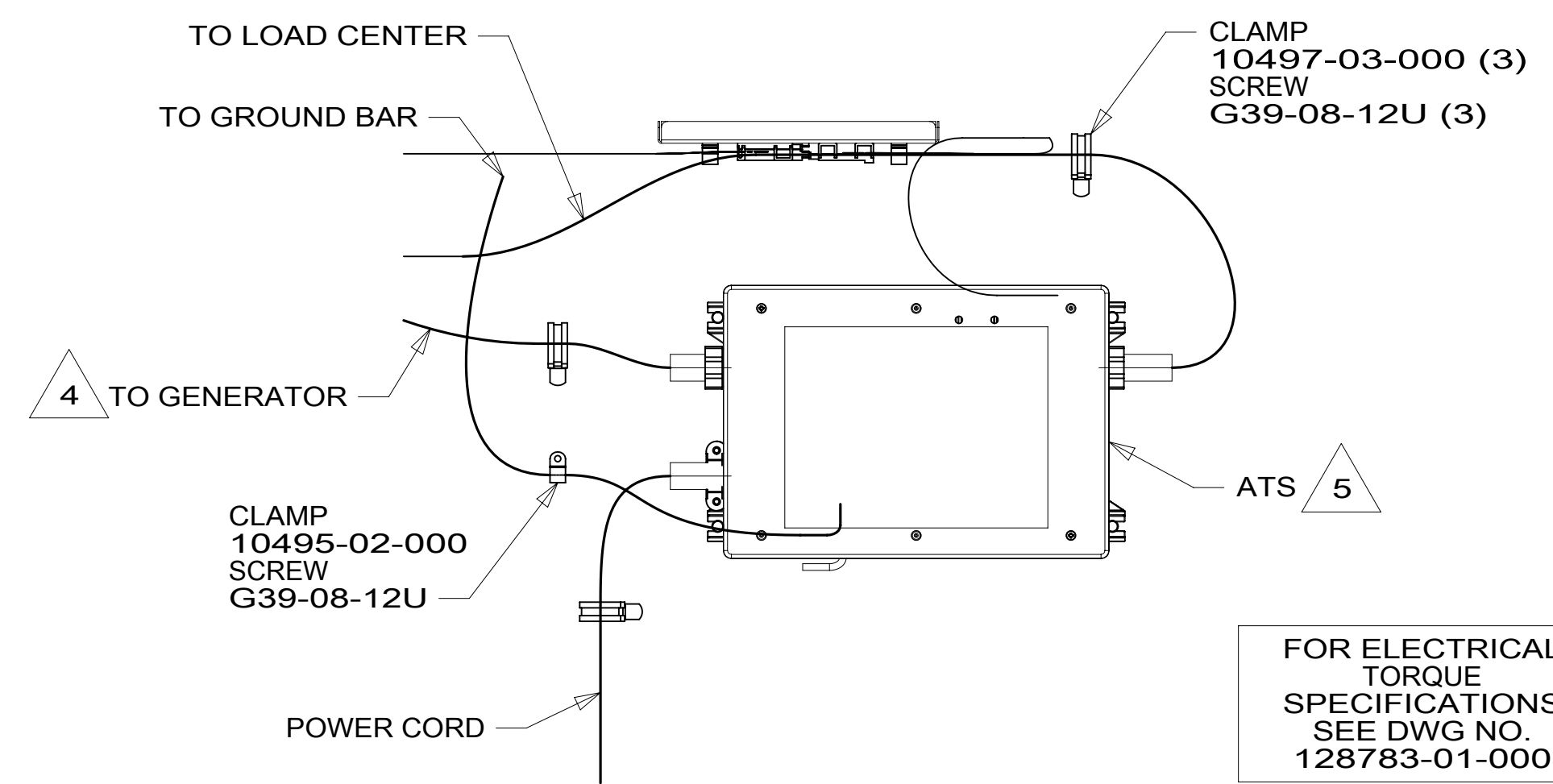
B

A

A



- NOTES:
- 6 ROUTE ENGINE HEATER POWER CORD THROUGH GROMMET.
  - 5 SEE ATS ASM FOR ADDITIONAL INFORMATION.
  - 4 SEE GENERATOR INSTL FOR ADDITIONAL INFORMATION.
  - 3. WIRES THAT REST ON WIRE TRAYS ARE TO BE TIED DOWN WITH WIRE TIE 8343-04-000.
  - 2. CLAMP TO FLOOR SUPPORT TUBES AS NECESSARY WITH CLAMP 10497-01-000.
  - 1. ALL WIRES TO BE SECURED WITH CLAMP 10495 OR 10497 OR WIRE TIE 8343 OR 108046 EVERY 600 MM. USE SCREW G67-XX-XXX OR G56-XX-XXX AS APPROPRIATE FOR INSTALLATION.



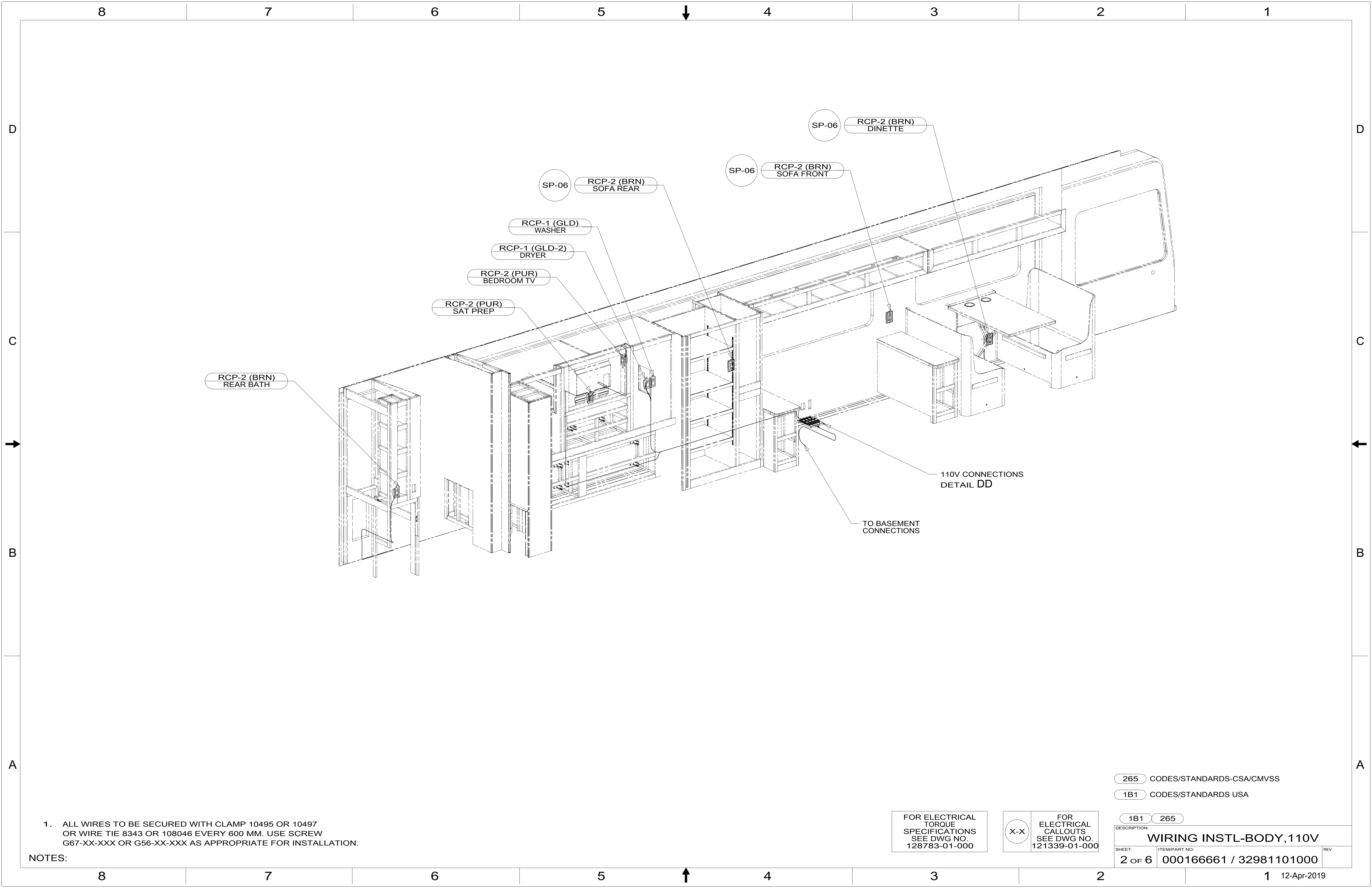
FOR ELECTRICAL TORQUE SPECIFICATIONS SEE DWG NO. 128783-01-000

FOR ELECTRICAL CALLOUTS SEE DWG NO. 121339-01-000

- 265 CODES/STANDARDS-CSA/CMVSS
- 1B1 CODES/STANDARDS USA
- 1B1 265

<b>WINNEBAGO</b> COPYRIGHT 2016 WINNEBAGO INDUSTRIES, INC.	
DSNR:	ALL DIMENSIONS ARE IN MILLIMETERS
DFFR:	
UNSPECIFIED TOLERANCES:	MATERIAL:
WHOLE DIM (X) : 3	
ONE-PLACE (X.X) : 1.5	
TWO-PLACE (X.XX) : 0.50	
ANGLE : 1°	
REFER TO ES0018 FOR FASTENER TIGHTENING GUIDELINES	WEIGHT: (LBS) FIRST USED: <b>19 L38F</b>
<b>WIRING INSTL-BODY, 110V</b>	
SHEET: <b>1 OF 6</b>	ITEM/PART NO: <b>000166661 / 32981101000</b>
REF:	<b>1</b> 12-Apr-2019

8 7 6 5 4 3 2 1



1. ALL WIRES TO BE SECURED WITH CLAMP 10495 OR 10497 OR WIRE TIE 8343 OR 108046 EVERY 600 MM. USE SCREW G67-XX-XXX OR G56-XX-XXX AS APPROPRIATE FOR INSTALLATION.

NOTES:

FOR ELECTRICAL TORQUE SPECIFICATIONS SEE DWG NO. 128783-01-000

FOR ELECTRICAL CALLOUTS SEE DWG NO. 121339-01-000

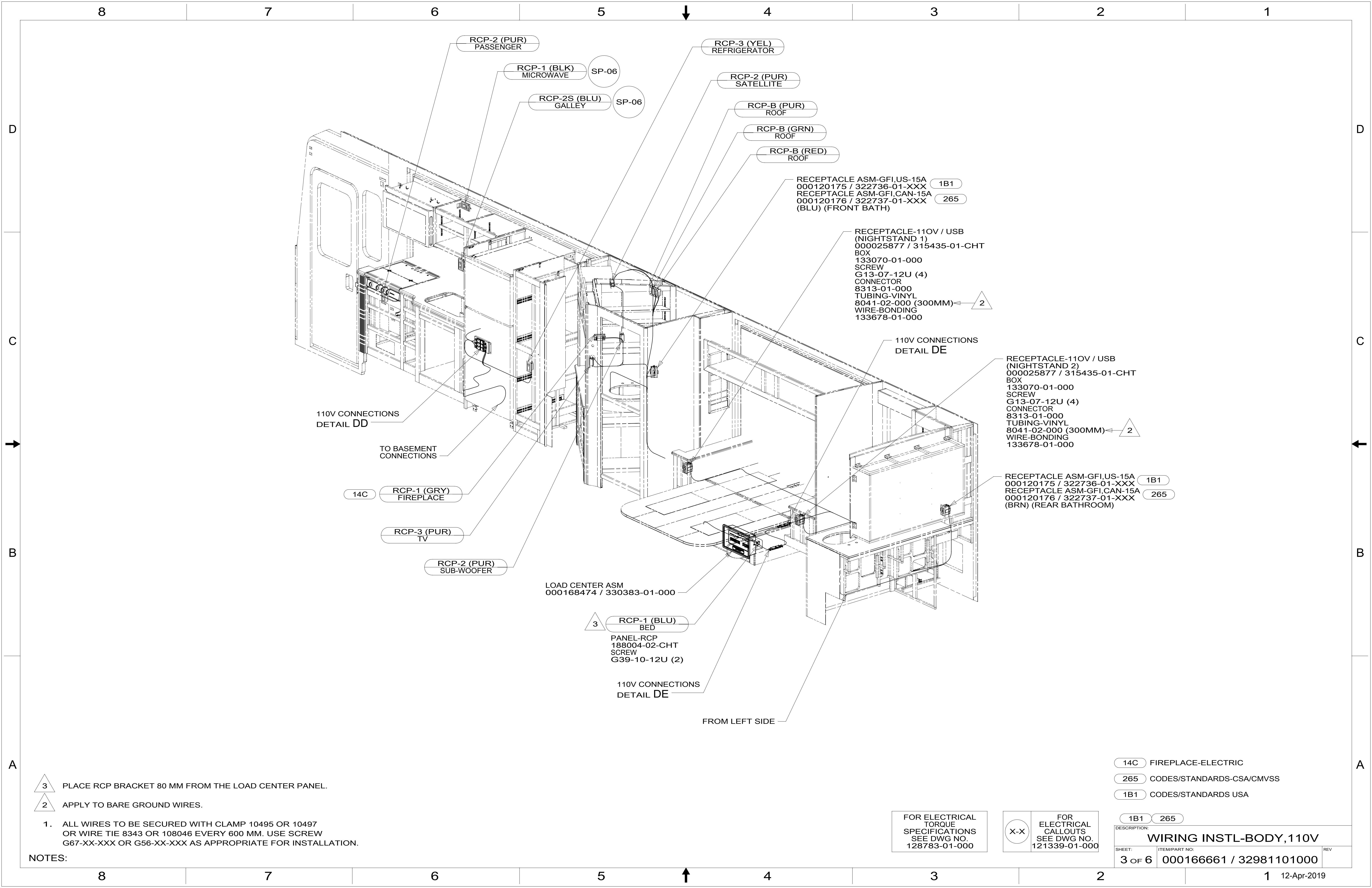
265 CODES/STANDARDS-CSA/CMVSS

1B1 CODES/STANDARDS USA

1B1 265

DESCRIPTION: WIRING INSTL-BODY, 110V

SHEET: 2 OF 6 ITEM/PART NO: 000166661 / 32981101000 REV



- 3 PLACE RCP BRACKET 80 MM FROM THE LOAD CENTER PANEL.
- 2 APPLY TO BARE GROUND WIRES.
1. ALL WIRES TO BE SECURED WITH CLAMP 10495 OR 10497 OR WIRE TIE 8343 OR 108046 EVERY 600 MM. USE SCREW G67-XX-XXX OR G56-XX-XXX AS APPROPRIATE FOR INSTALLATION.

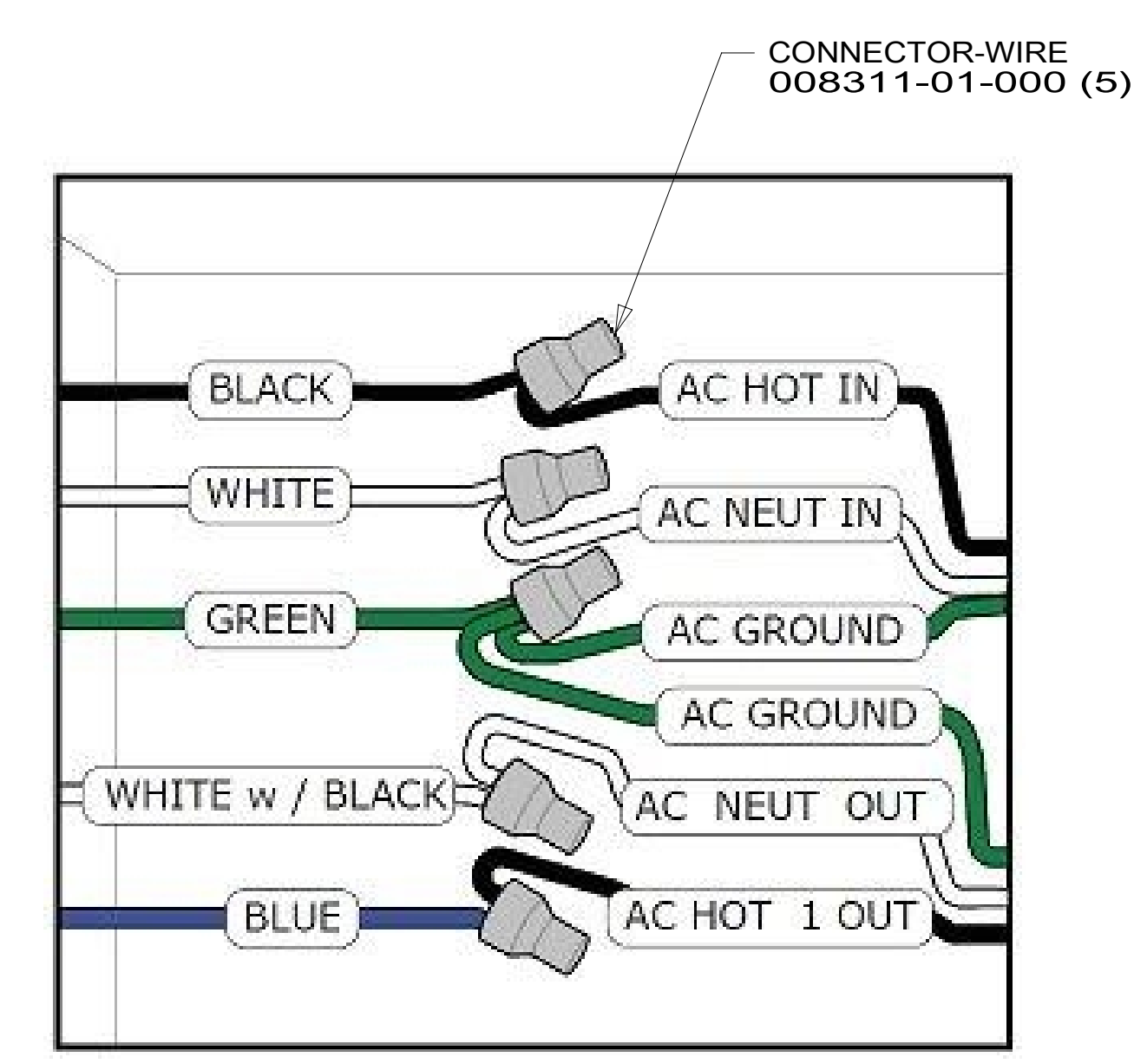
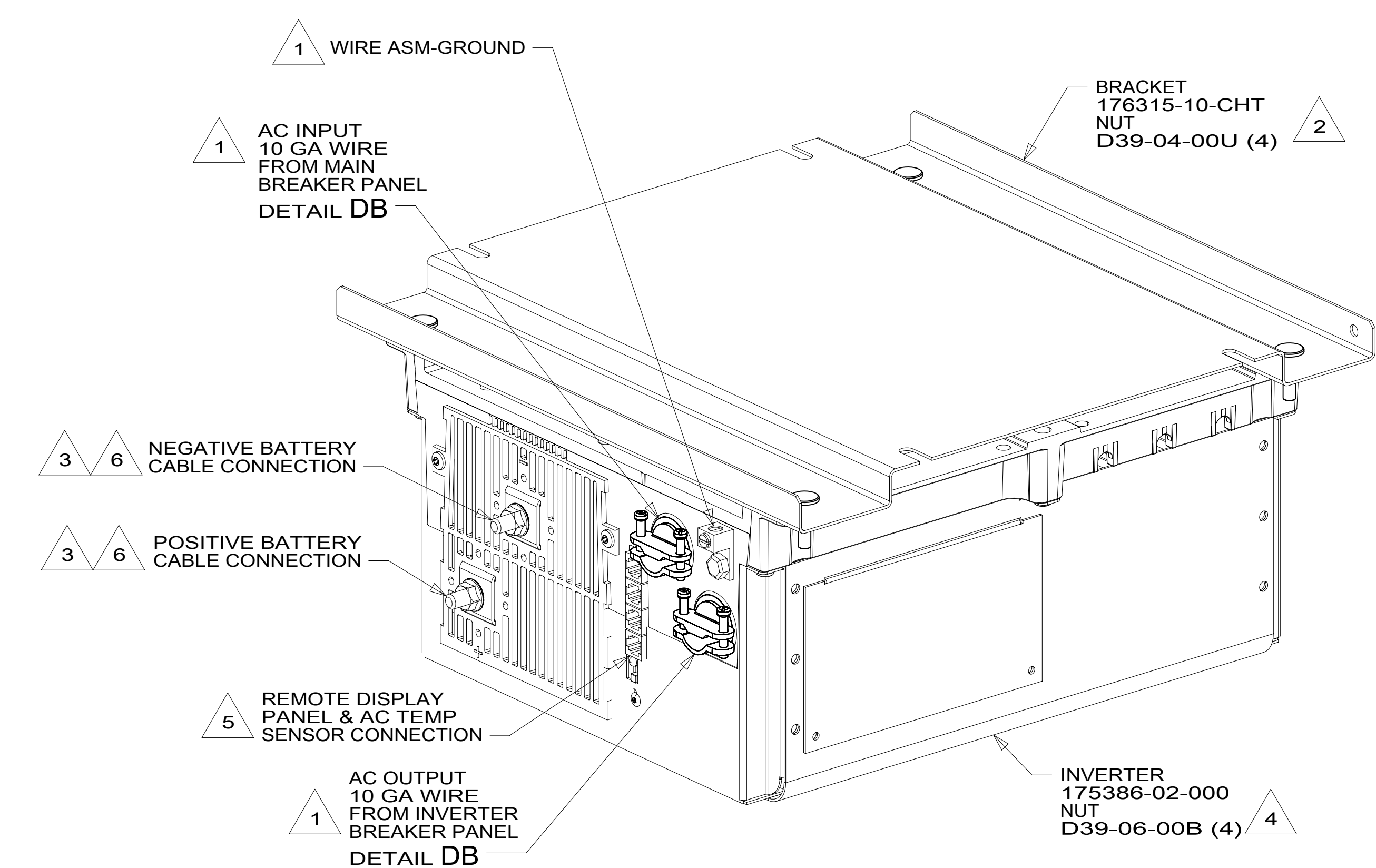
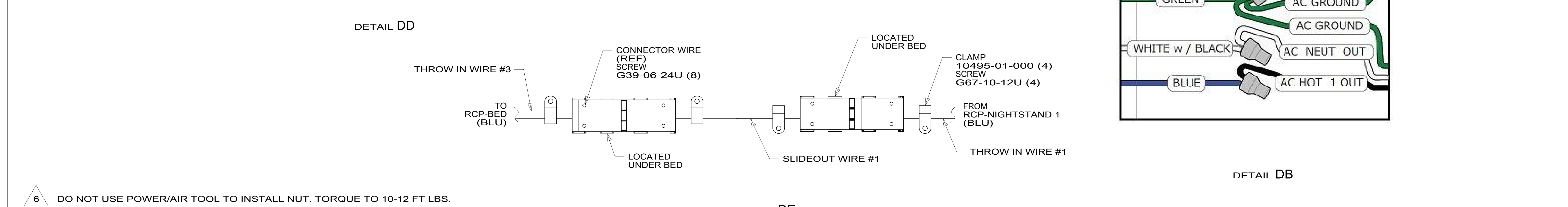
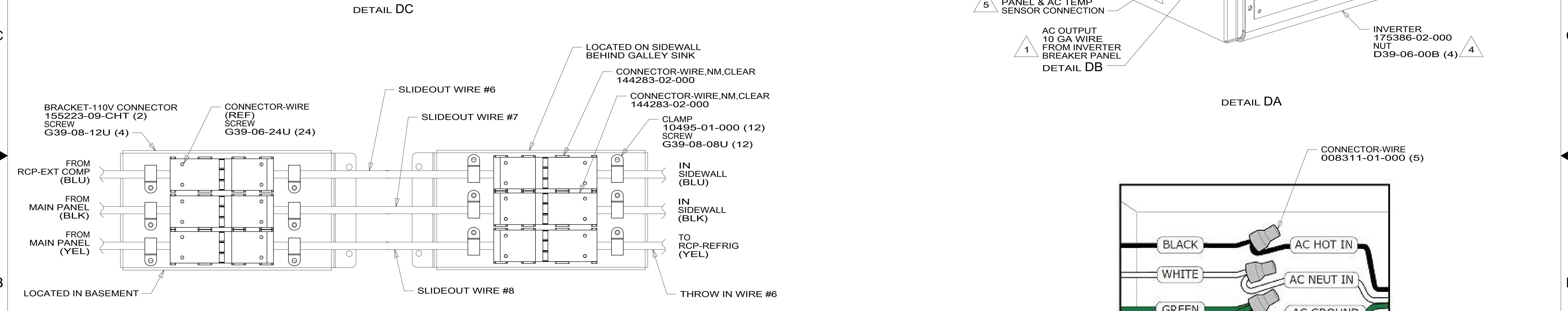
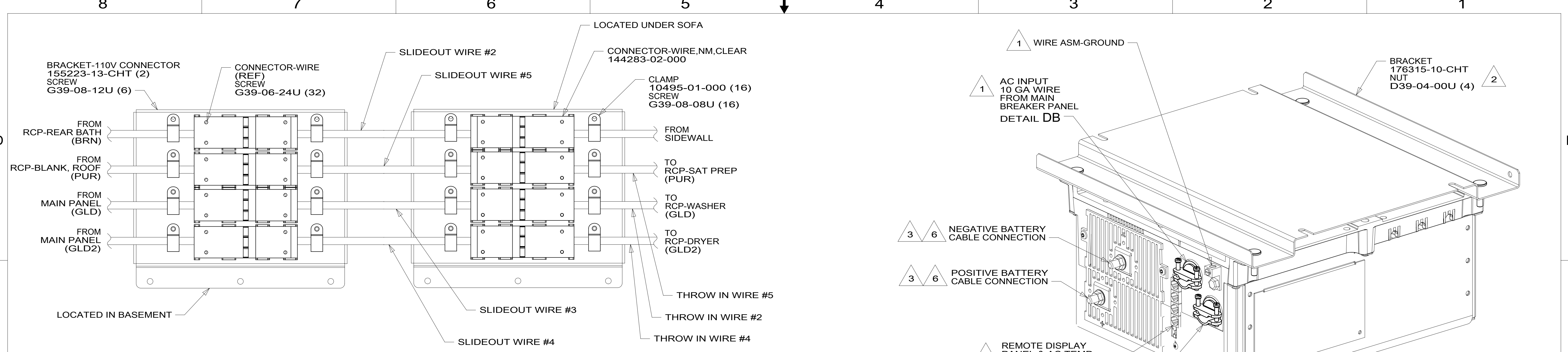
NOTES:

FOR ELECTRICAL TORQUE SPECIFICATIONS SEE DWG NO. 128783-01-000

FOR ELECTRICAL CALLOUTS SEE DWG NO. 121339-01-000

- 14C FIREPLACE-ELECTRIC
- 265 CODES/STANDARDS-CSA/CMVSS
- 1B1 CODES/STANDARDS USA

DESCRIPTION: <b>WIRING INSTL-BODY, 110V</b>		
SHEET: 3 OF 6	ITEM/PART NO.: 000166661 / 32981101000	REV



- NOTES:**
- 6 DO NOT USE POWER/AIR TOOL TO INSTALL NUT. TORQUE TO 10-12 FT LBS.
  - 5 CABLES PART OF WIRE ASM-COACH.
  - 4 SEE INVERTER/CHARGER OWNER'S MANUAL FOR ADDITIONAL INFORMATION.
  - 3 SEE WIRING INSTL-CHASSIS FOR ADDITIONAL INFORMATION.
  - 2 BRACKET IS LOCATED BY HOLES ON BRACKET.
  - 1 SEE LOAD CENTER ASM FOR ADDITIONAL INFORMATION.

FOR ELECTRICAL TORQUE SPECIFICATIONS SEE DWG NO. 128783-01-000

FOR ELECTRICAL CALLOUTS SEE DWG NO. 121339-01-000

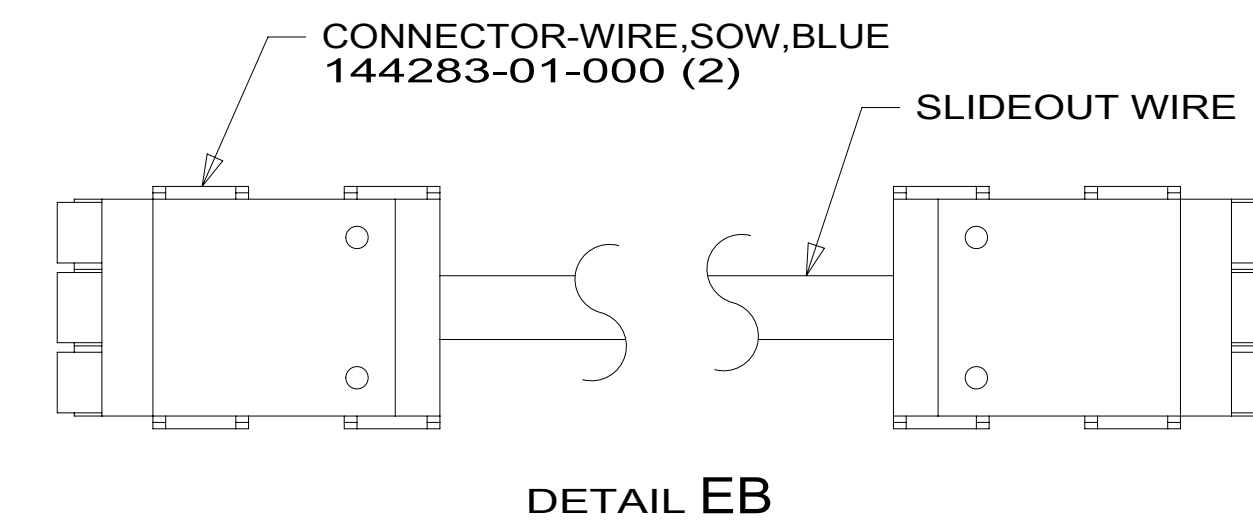
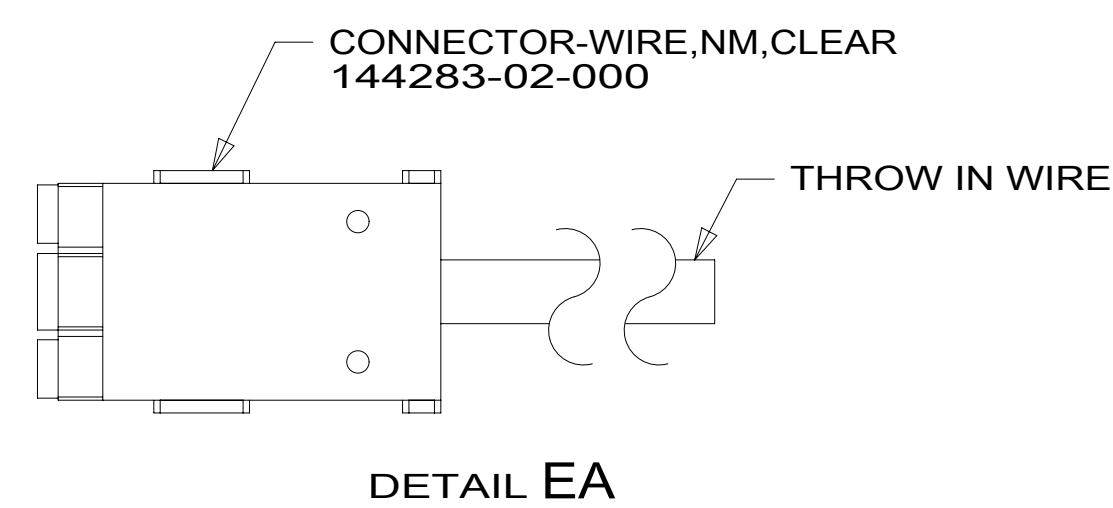
265	CODES/STANDARDS-CSA/CMVSS
1B1	CODES/STANDARDS USA
1B1	265
DESCRIPTION: <b>WIRING INSTL-BODY, 110V</b>	
SHEET: 4 OF 6	ITEM/PART NO: 000166661 / 32981101000
REV 12-Apr-2019	

RED	1B1	136135-07-068	
	265	136136-07-068	
GRN	1B1	136135-08-068	
	265	136136-08-068	
YEL	1B1	136131-05-085	1
	265	136134-05-085	1
GLD	1B1	136131-10-060	1
	265	136134-10-060	1
GLD-2	1B1	136131-20-060	1
	265	136134-20-060	1
BLU	1B1	136131-02-171	1
	265	136134-02-171	1
BRN	1B1	136131-03-226	1
	265	136134-03-226	1
PUR	1B1	136131-04-159	1
	265	136134-04-159	1

ORG	1B1	136131-16-045	
	265	136134-16-045	
BLK	1B1	136131-06-073	1
	265	136134-06-073	1
GRY	1B1	136131-15-069	14C
	265	136134-15-069	14C
INVERTER CHARGER MAIN	1B1	136137-01-060	
	265	136138-01-060	
INVERTER CHARGER SUB MAIN	1B1	136137-01-060	
	265	136138-01-060	
CABLE ASM-MAIN,6 AWG		176841-01-041	
MAIN GROUND		136145-01-029	
ATS GROUND		136145-01-015	
INVERTER GROUND		136145-04-027	
GENERATOR CABLE ASM		136148-02-109	

THROW IN WIRE #1	1B1	136131-02-064	1
	265	136134-02-064	1
THROW IN WIRE #2	1B1	136131-10-032	1
	265	136134-10-032	1
THROW IN WIRE #3	1B1	136131-02-003	1
	265	136134-02-003	1
THROW IN WIRE #4	1B1	136131-20-032	1
	265	136134-20-032	1
THROW IN WIRE #5	1B1	136131-04-072	1
	265	136134-04-072	1
THROW IN WIRE #6	1B1	136131-05-018	1
	265	136134-05-018	1

SLIDEOUT WIRE #1	136151-02-014	2
SLIDEOUT WIRE #2	136151-03-022	2
SLIDEOUT WIRE #3	136151-10-022	2
SLIDEOUT WIRE #4	136151-20-022	2
SLIDEOUT WIRE #5	136151-04-022	2
SLIDEOUT WIRE #6	136151-02-029	2
SLIDEOUT WIRE #7	136151-06-029	2
SLIDEOUT WIRE #8	136151-05-029	2



- 14C FIREPLACE-ELECTRIC
- 265 CODES/STANDARDS-CSA/CMVSS
- 1B1 CODES/STANDARDS USA

NOTES:

2 SEE DETAIL EB FOR CONNECTOR INSTALLATION.

1 SEE DETAIL EA FOR CONNECTOR INSTALLATION.

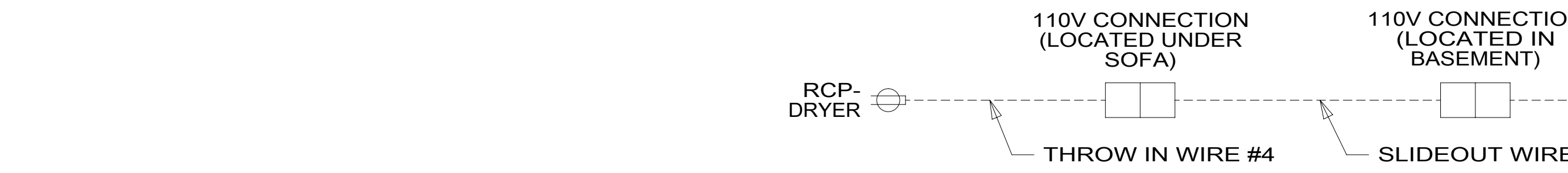
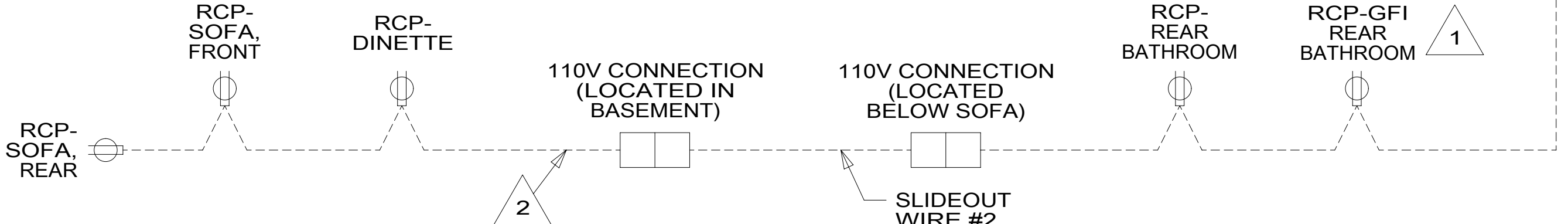
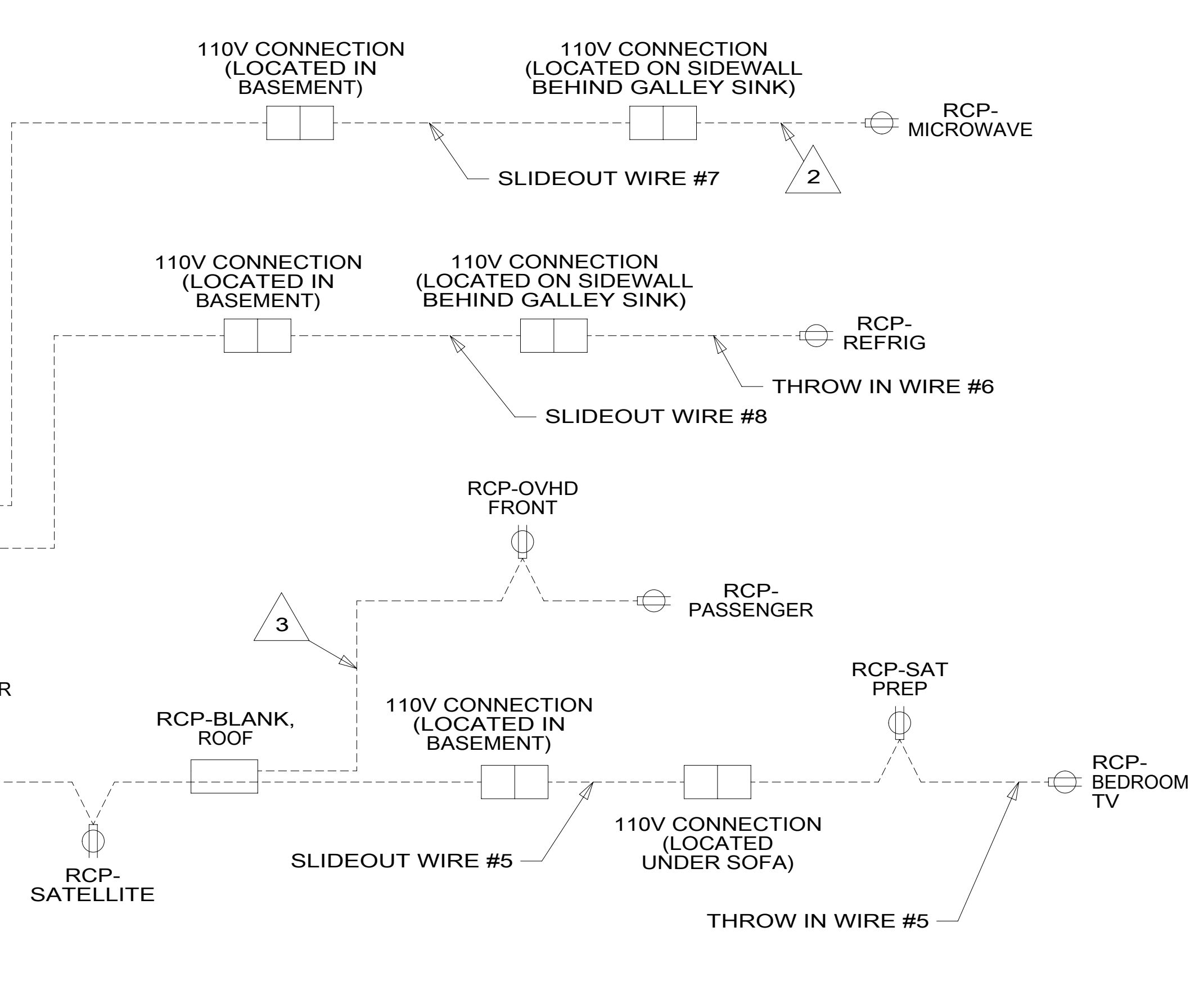
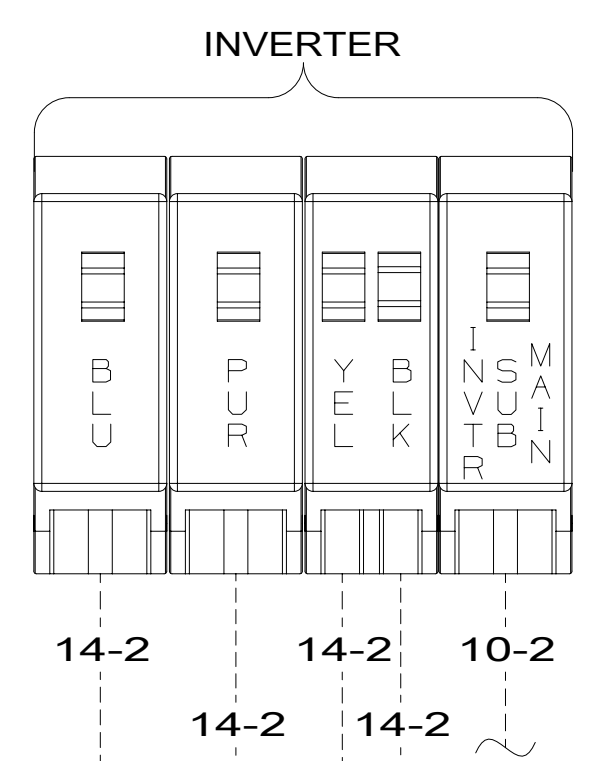
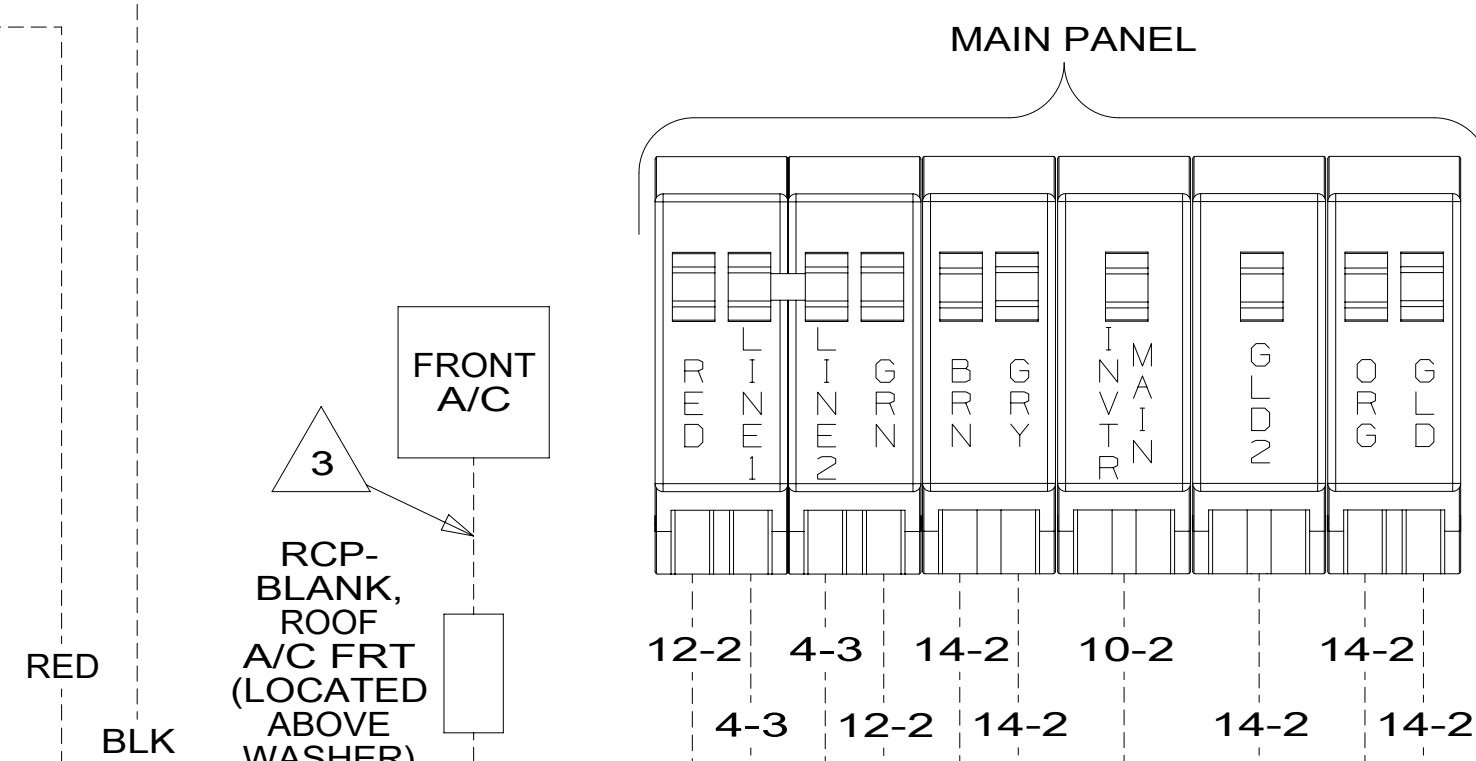
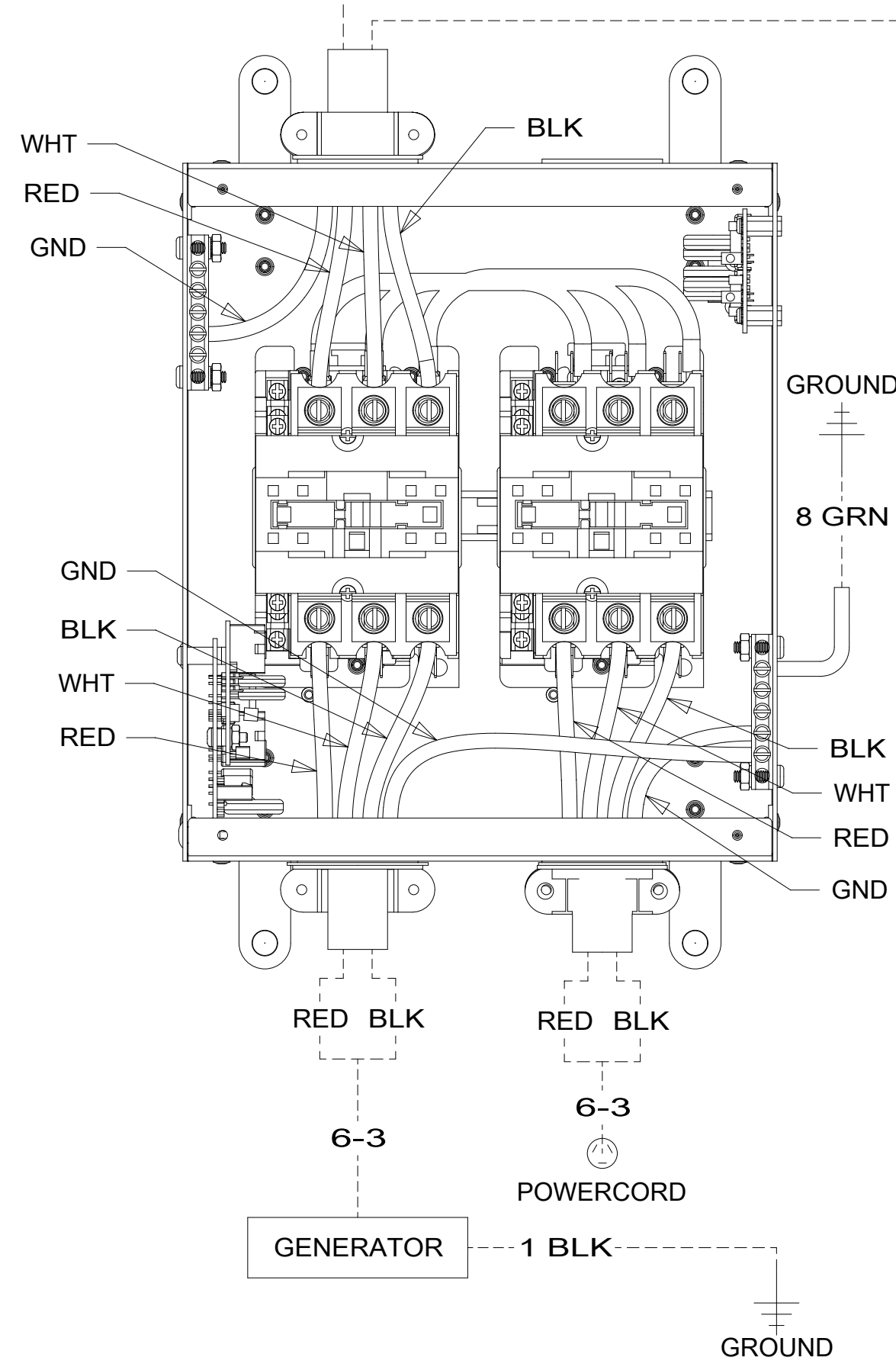
FOR ELECTRICAL TORQUE SPECIFICATIONS SEE DWG NO. 128783-01-000

FOR ELECTRICAL CALLOUTS SEE DWG NO. 121339-01-000

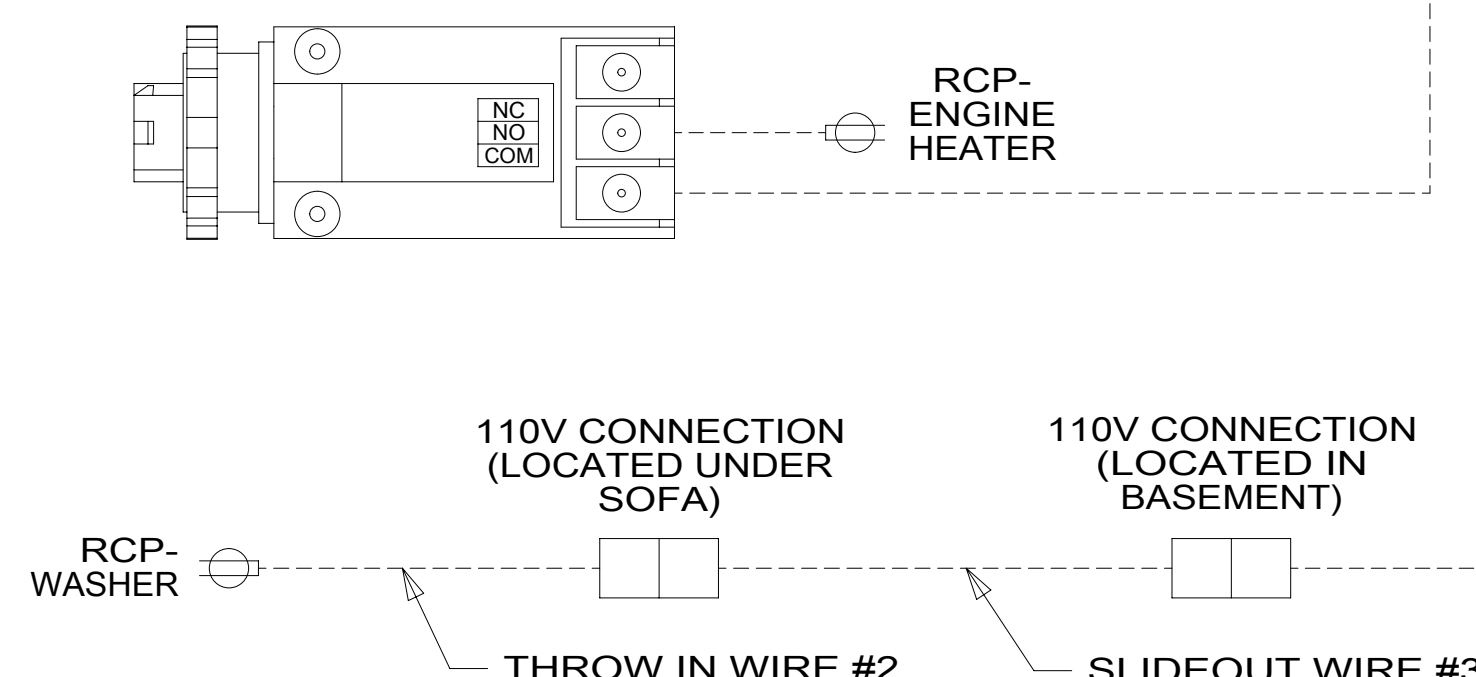
DESCRIPTION: 1B1 265

**WIRING INSTL-BODY, 110V**

SHEET: 5 OF 6 ITEM/PART NO: 000166661 / 32981101000 REV



- NOTES:**
- 4 REMOVE & DISCARD CONNECTOR TO CONNECT TO RCP WITHOUT 1DF
  - 3 WIRE ROUTED IN ROOF.
  - 2 WIRE ROUTED IN SIDEWALL.
  - 1 ALL OUTLETS DOWN STREAM AND INCLUDING THIS OUTLET ARE GROUND FAULT INTERRUPT PROTECTED.



FOR ELECTRICAL TORQUE SPECIFICATIONS SEE DWG NO. 128783-01-000

FOR ELECTRICAL CALLOUTS SEE DWG NO. 121339-01-000

- 1DF EXT TV ENTERTAINMENT CENTER
- 265 CODES/STANDARDS-CSA/CMVSS
- 1B1 CODES/STANDARDS USA

DESCRIPTION: <b>WIRING INSTL-BODY, 110V</b>		
SHEET: 6 OF 6	ITEM/PART NO.: 000166661 / 32981101000	REV