

SPLITTER-HDMI, 1X2  
178632-01-000  
85774-01-000 (100 MM)  
85774-02-000 (100 MM)  
(INPUT-BLU RAY  
OUTPUT 1-MAIN 1  
OUTPUT 2-EXT 2)

DVD PLAYER  
000183221 / 302822-01-000  
FASTENER-DUAL LOCK  
85774-01-000 (200 MM)  
85774-02-000 (200 MM)

MODULE-INTERFACE,IR INPUT  
149750-09-000  
WIRE ASM- EXTENSION,2 PIN  
000028274 / 316209-01-000  
DETAIL AB

TRANSMITTER-IR  
149750-11-000

RECEIVER-DISH,WALLY  
000100988 / 327103-01-000  
FASTENER-DUAL LOCK  
85774-01-000 (200 MM)  
85774-02-000 (200 MM)

PLATE-WALL,TRIPLE COAX  
149557-10-CHT  
149557-09-CHT  
SCREW  
G67-10-08U (2)

TV-50,FLAT PANEL ELED, HDTV  
194671-01-000  
BRACKET-MNTNG,TV,50SAMSUNG  
000130669 / 325589-01-CHT  
SCREW  
G11-08-12U (5)  
SCREW  
(SUPPLIED WITH TV)

SPEAKER-SOUNDBAR, WIRELESS SUB, SAMSUNG  
000170008 / 330888-01-000  
FASTENER-DUAL LOCK  
085774-01-000 (50 MM) (2)  
085774-02-000 (50 MM) (2)

SUBWOOFER  
(REF)  
BRACKET-SUPPORT,SUBWOOFER  
000042138 / 320036-01-CHT  
SCREW  
G11-08-12U (2)

RECEIVER-IR,IMPACT  
149750-13-000

787 & 45B  
789 & 45B  
BRACKET-ANTENNA,SATELLITE  
000023112 / 314657-01-CHT  
SCREW  
000G39-08-12U (2)

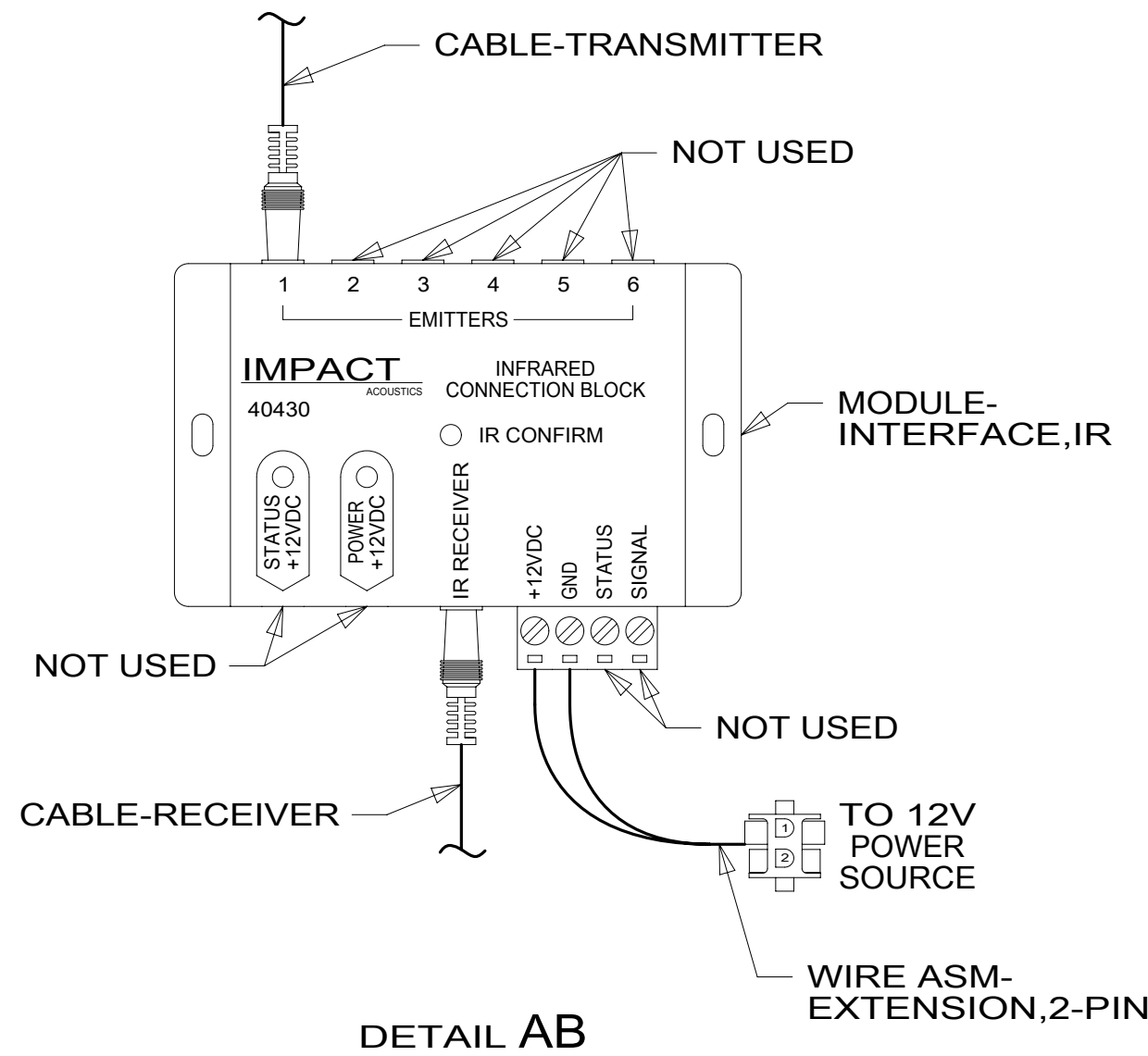
PLATE-WALL,  
POWER SUPPLY  
179004-02-CHT

RCP-2 (PUR)  
OVHD FRONT

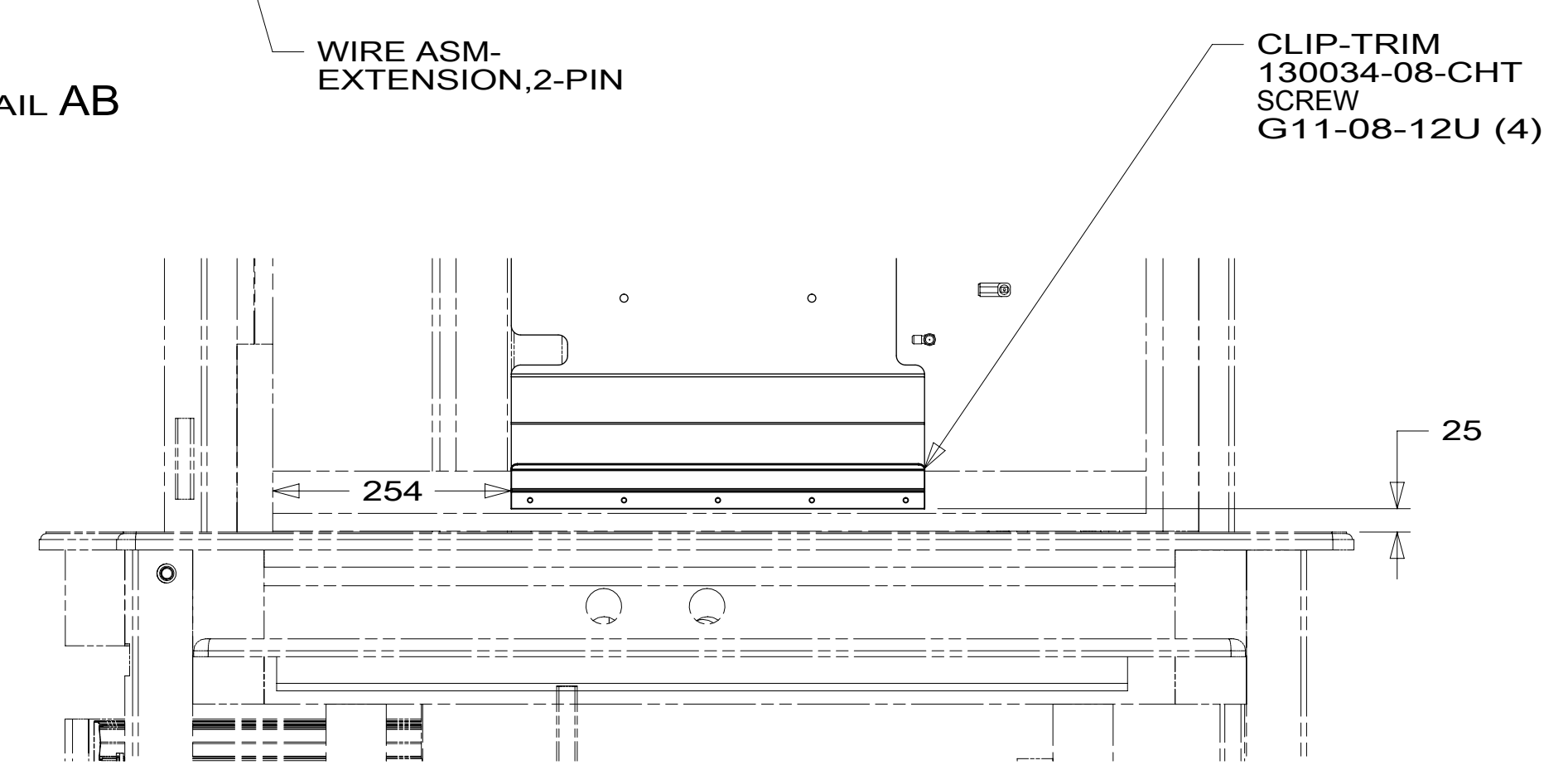
PANEL ASM  
155127-35-XXX  
155127-36-XXX  
000007511 / 310614-01-XXX

GROMMET-EDGE LINER  
114208-05-000

CONTROL-INTERIOR  
183415-05-000  
183415-02-000  
FASTENER-DUAL LOCK  
85774-01-000 (200 MM)  
85774-02-000 (200 MM)



DETAIL AB



VIEW AA  
(TV NOT SHOWN)

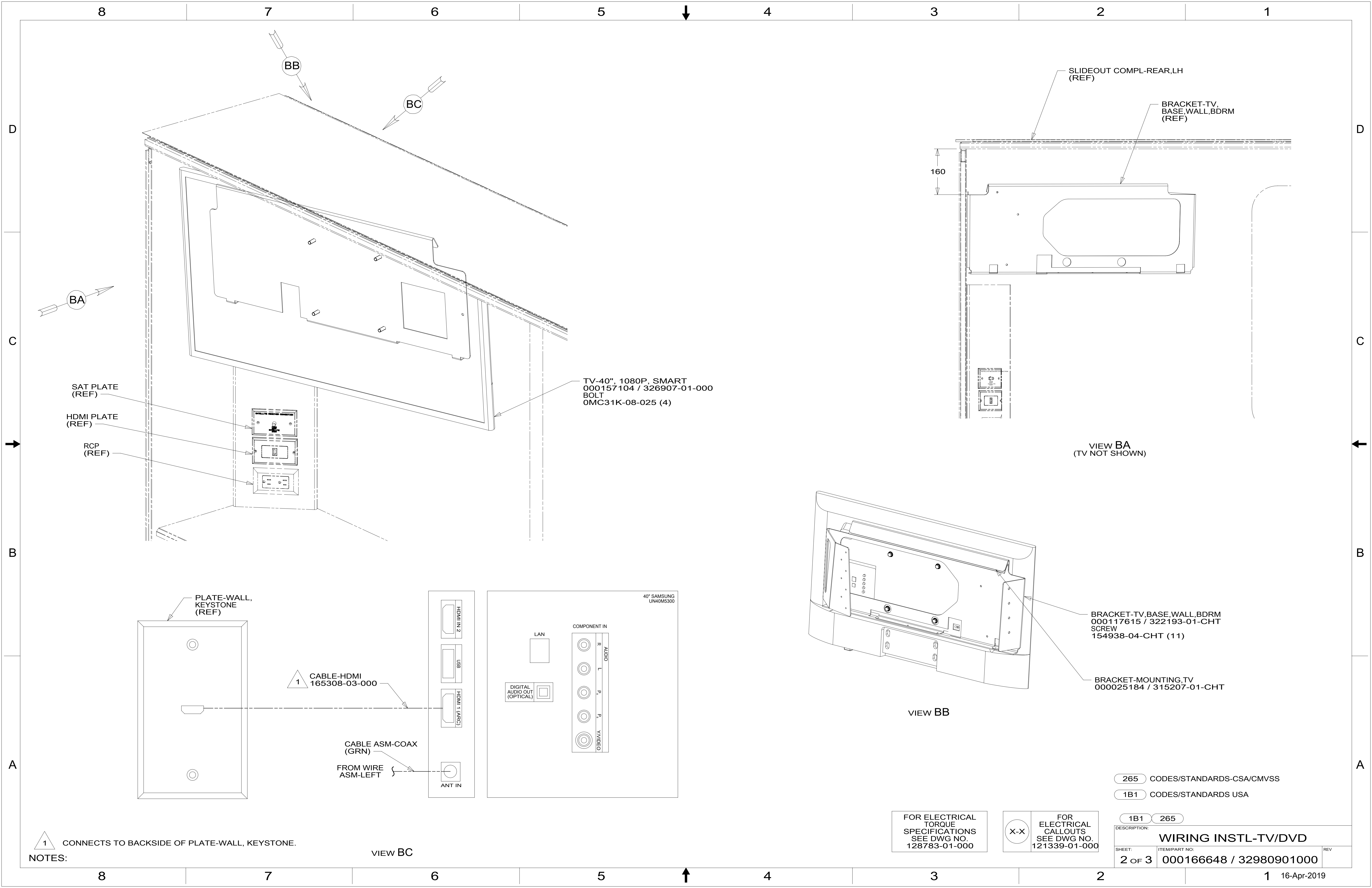
- 45D LOFT BED - WITHOUT
- 45B LOFT BED
- 787 SAT TV ANT, AUTO DIRECTV
- 78C SATELLITE SYSTEM READY
- 265 CODES/STANDARDS-CSA/CMVSS
- 1B1 CODES/STANDARDS USA

<b>WINNEBAGO</b> COPYRIGHT 2016 WINNEBAGO INDUSTRIES, INC.	
DSNR:	ALL DIMENSIONS ARE IN MILLIMETERS
DFFR:	
UNSPECIFIED TOLERANCES:	MATERIAL:
WHOLE DIM (X) : 3	
ONE-PLACE (X.X) : 1.5	
TWO-PLACE (X.XX) : 0.50	
ANGLE : 1°	
REFER TO ES0018 FOR FASTENER TIGHTENING GUIDELINES	WEIGHT: (LBS) FIRST USED: <b>19 L36G</b>
<b>DESCRIPTION:</b> <b>WIRING INSTL-TV/DVD</b>	
SHEET: 1 OF 3	ITEM/PART NO: 000166648 / 32980901000

NOTES:  
2 POSITION IR EMITTER OVER IR RECIEVER ON DVD PLAYER.  
1 INTERIOR CONTROL CONNECTS TO SATELLITE DATA CABLE. SEE ROOF ASM FOR ADDITIONAL INFORMATION.

FOR ELECTRICAL TORQUE SPECIFICATIONS SEE DWG NO. 128783-01-000

FOR ELECTRICAL CALLOUTS SEE DWG NO. 121339-01-000



TV-40", 1080P, SMART  
 000157104 / 326907-01-000  
 BOLT  
 OMC31K-08-025 (4)

SAT PLATE  
 (REF)  
 HDMI PLATE  
 (REF)  
 RCP  
 (REF)

SLIDEOUT COMPL-REAR,LH  
 (REF)  
 BRACKET-TV,  
 BASE,WALL,BDRM  
 (REF)

VIEW BA  
 (TV NOT SHOWN)

BRACKET-TV,BASE,WALL,BDRM  
 000117615 / 322193-01-CHT  
 SCREW  
 154938-04-CHT (11)

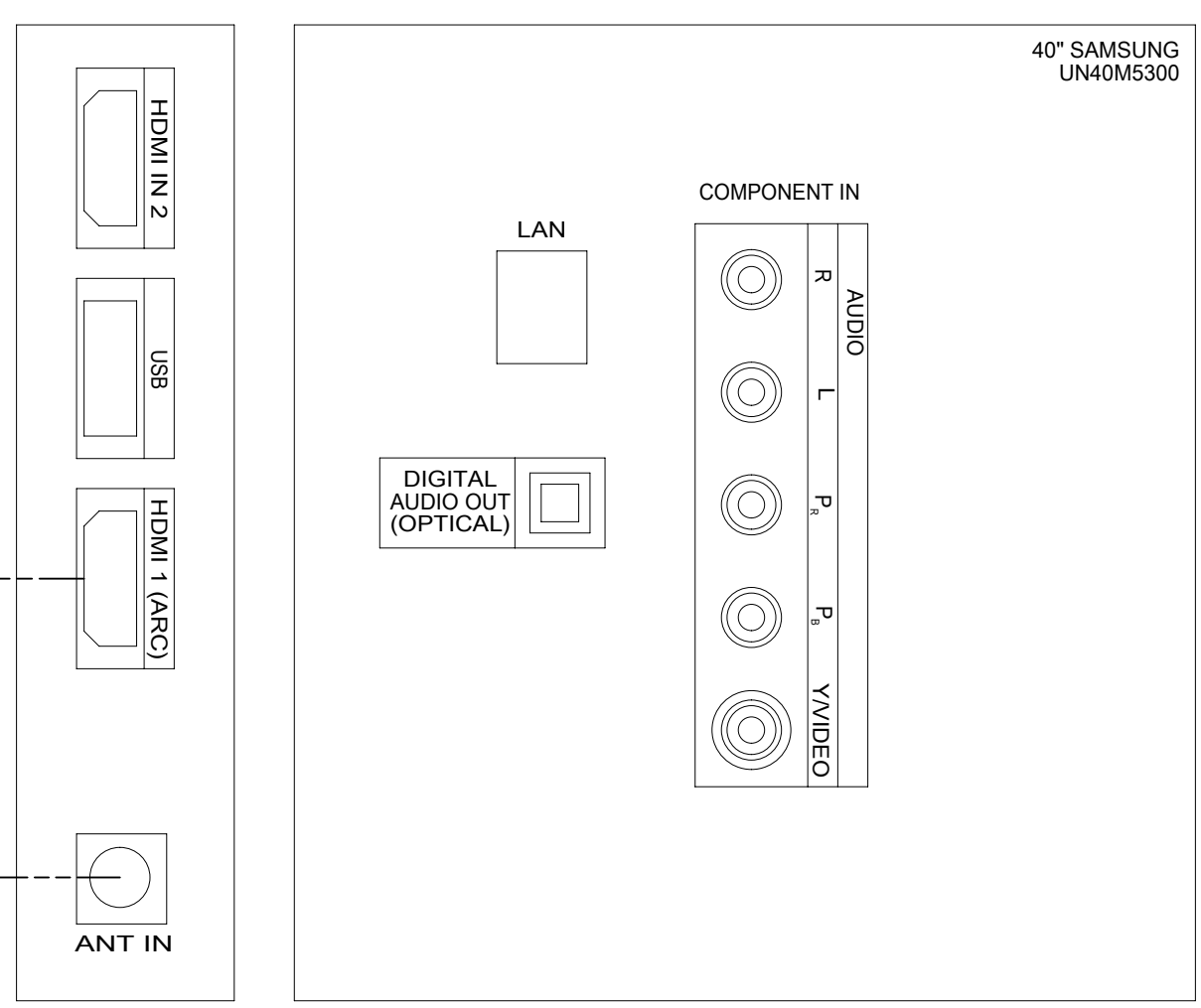
BRACKET-MOUNTING,TV  
 000025184 / 315207-01-CHT

VIEW BB

PLATE-WALL,  
 KEYSTONE  
 (REF)

1  
 CABLE-HDMI  
 165308-03-000

CABLE ASM-COAX  
 (GRN)  
 FROM WIRE  
 ASM-LEFT



40" SAMSUNG  
 UN40M5300

1 CONNECTS TO BACKSIDE OF PLATE-WALL, KEYSTONE.

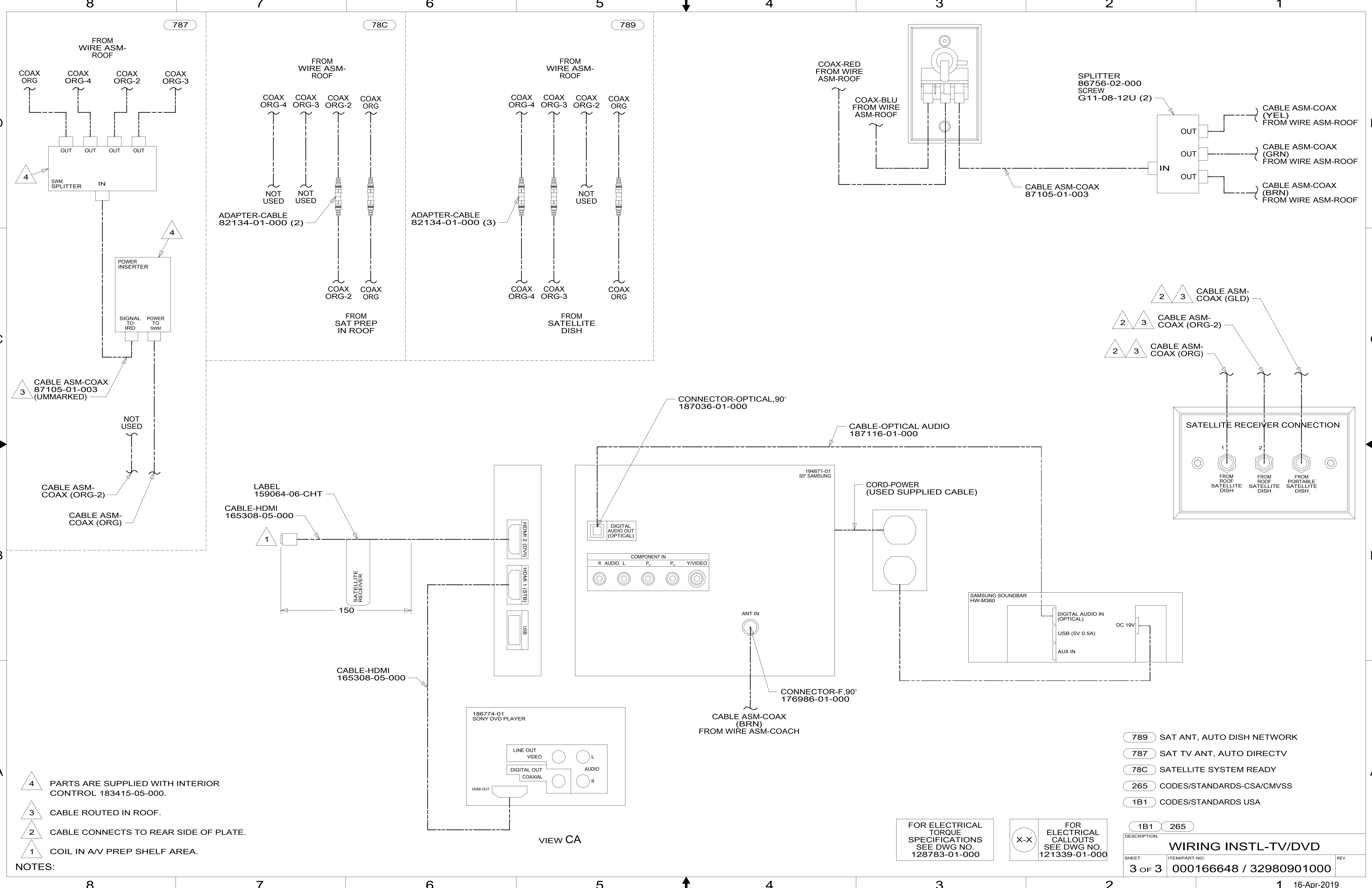
VIEW BC

FOR ELECTRICAL  
 TORQUE  
 SPECIFICATIONS  
 SEE DWG NO.  
 128783-01-000

X-X  
 FOR ELECTRICAL  
 CALLOUTS  
 SEE DWG NO.  
 121339-01-000

265 CODES/STANDARDS-CSA/CMVSS  
 1B1 CODES/STANDARDS USA

DESCRIPTION:		1B1	265
<b>WIRING INSTL-TV/DVD</b>			
SHEET:	ITEM/PART NO.:	REV	
2 OF 3	000166648 / 32980901000		



- NOTES:
- 4 PARTS ARE SUPPLIED WITH INTERIOR CONTROL 183415-05-000.
  - 3 CABLE ROUTED IN ROOF.
  - 2 CABLE CONNECTS TO REAR SIDE OF PLATE.
  - 1 COIL IN AV PREP SHELF AREA.

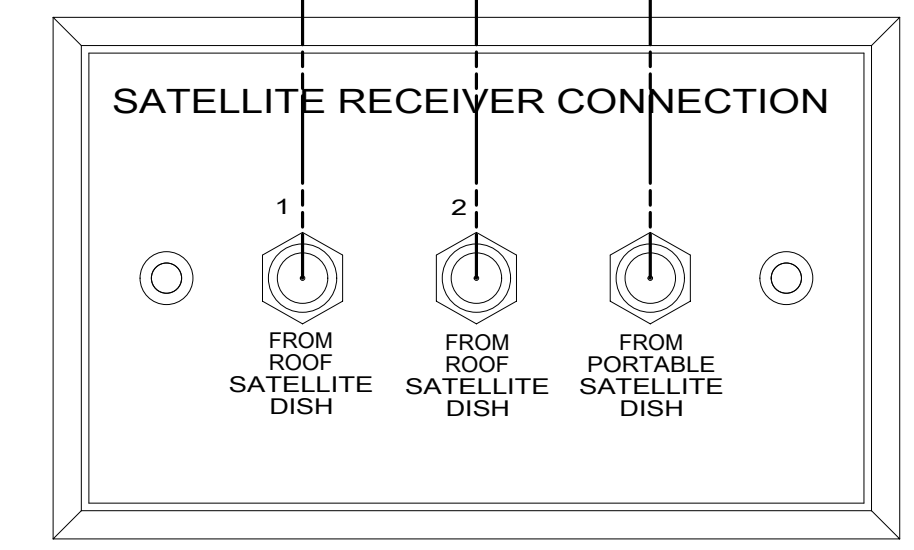
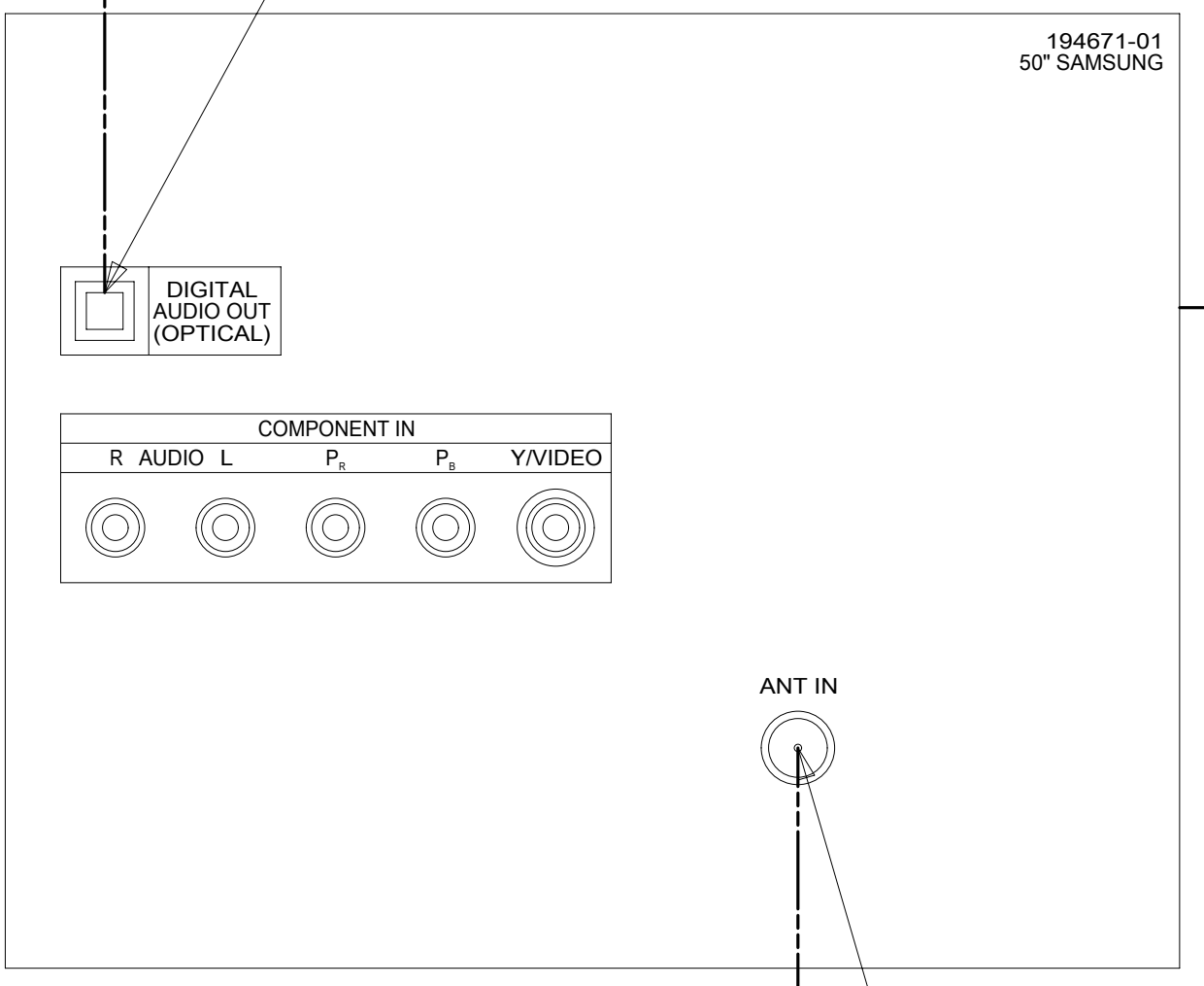
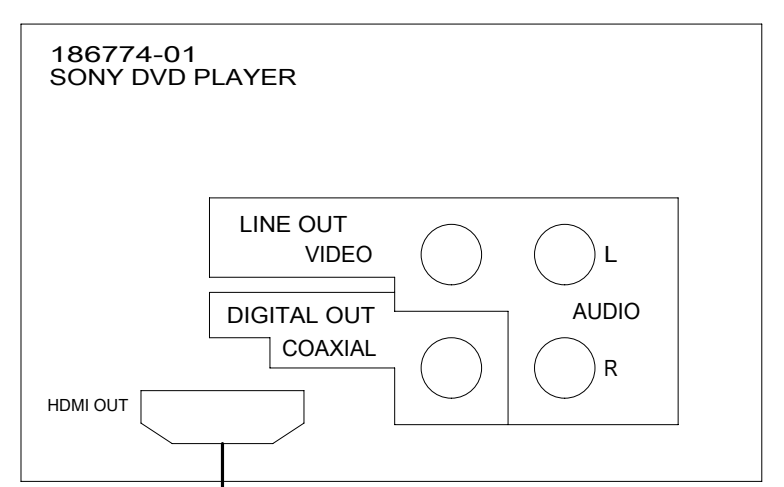
- 789 SAT ANT, AUTO DISH NETWORK
- 787 SAT TV ANT, AUTO DIRECTV
- 78C SATELLITE SYSTEM READY
- 265 CODES/STANDARDS-CSA/CMVSS
- 1B1 CODES/STANDARDS USA

FOR ELECTRICAL TORQUE SPECIFICATIONS SEE DWG NO. 128783-01-000

FOR ELECTRICAL CALLOUTS SEE DWG NO. 121339-01-000

DESCRIPTION:	1B1 265	
<b>WIRING INSTL-TV/DVD</b>		
SHEET:	ITEM/PART NO:	REV
3 OF 3	000166648 / 32980901000	

VIEW CA



A

A

B

B

C

C

D

D

8

7

6

5

4

3

2

1

8

7

6

5

4

3

2

1

16-Apr-2019