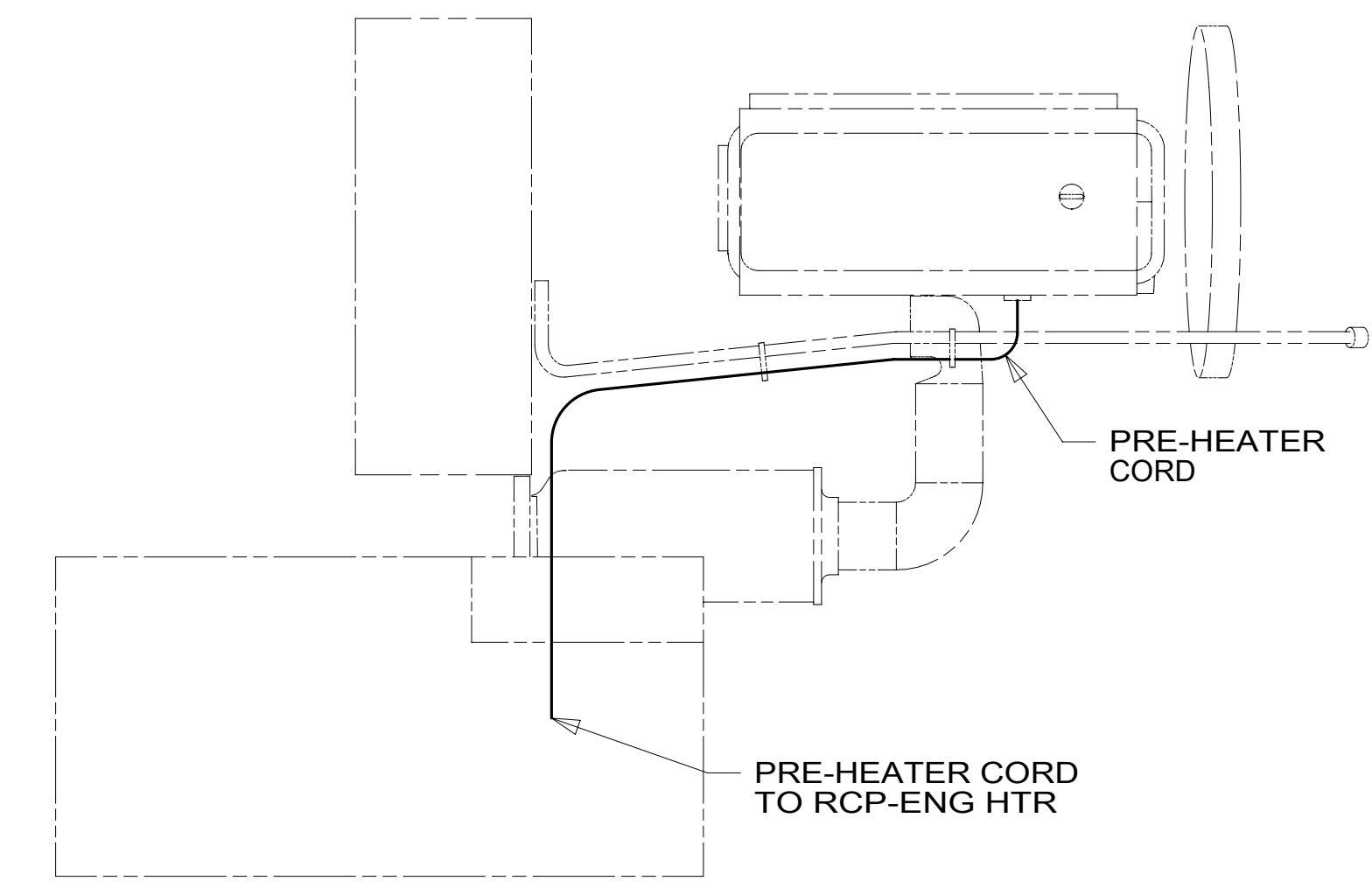


- NOTES:
- 6 CLAMP 83610-01-000, SCREW G39-08-12U.
  - 5 CLAMP 10497-03-000, SCREW G39-08-12U.
  - 4 USE TIE-WIRE 8343-04-000 TO SECURE WIRES TO FLOOR SUPPORT FRAME AT LEAST ONCE EVERY 600MM.
  - 3 SECURE CORD AWAY FROM ALL MOVING PARTS AND EXHAUST WITH WIRE-TIE 93147-01-000 AS REQUIRED
  - 2 SEE WIRING INSTL-FRONT END FOR ADDITIONAL INFORMATION.
  - 1 REST WIRE IN FRAME RAIL WHEN APPLICABLE.



FOR ELECTRICAL TORQUE SPECIFICATIONS SEE DWG NO. 128783-01-000

FOR ELECTRICAL CALLOUTS SEE DWG NO. 121339-01-000

- 265 CODES/STANDARDS-CSA/CMVSS
- 1B1 CODES/STANDARDS USA

<b>WINNEBAGO</b> COPYRIGHT 2016 WINNEBAGO INDUSTRIES, INC.	
DSNR:	ALL DIMENSIONS ARE IN MILLIMETERS
DFFR:	
UNSPECIFIED TOLERANCES:	MATERIAL:
WHOLE DIM (X) : 3	
ONE-PLACE (X.X) : 1.5	
TWO-PLACE (X.XX) : 0.50	
ANGLE : 1°	
REFER TO ES0018 FOR FASTENER TIGHTENING GUIDELINES	WEIGHT: (LBS) FIRST USED: <b>19 L36G</b>
<b>WIRING INSTL-CHASSIS</b>	
SHEET: <b>1 OF 4</b>	ITEM/PART NO: <b>000166645 / 32980801000</b>
REF:	REV:

8 7 6 5 4 3 2 1

D

D

C

C

B

B

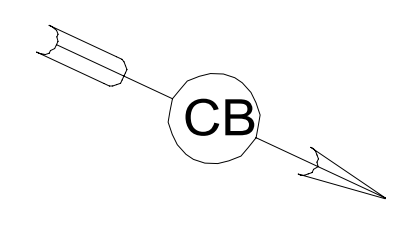
A

A

PANEL-CLOSEOUT,  
ELECTRICAL  
175347-06-CHT  
SCREW  
G11-08-12U (4)

CIRCUIT BREAKERS  
DETAIL CA

PANEL-CLOSEOUT,  
ELECTRICAL  
175347-02-CHT (2)  
SCREW  
G39-10-12U (4)



POWER DISTRIBUTION MODULE  
(CHASSIS SUPPLIED)  
(REF)

CHASSIS  
BATTERIES  
(REF)

FREIGHTLINER  
STARTER CABLE

VIEW BA

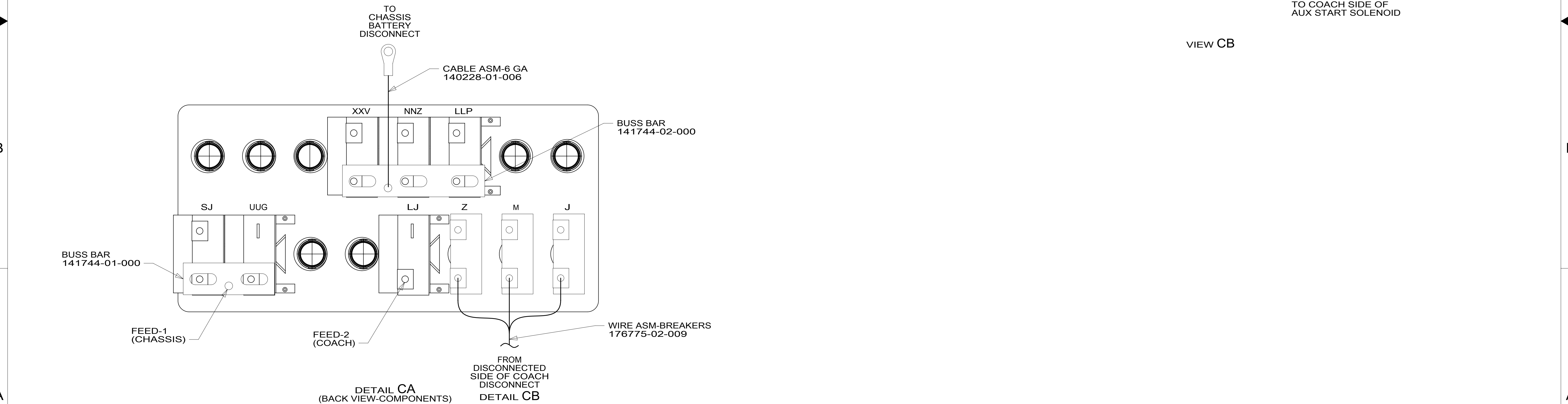
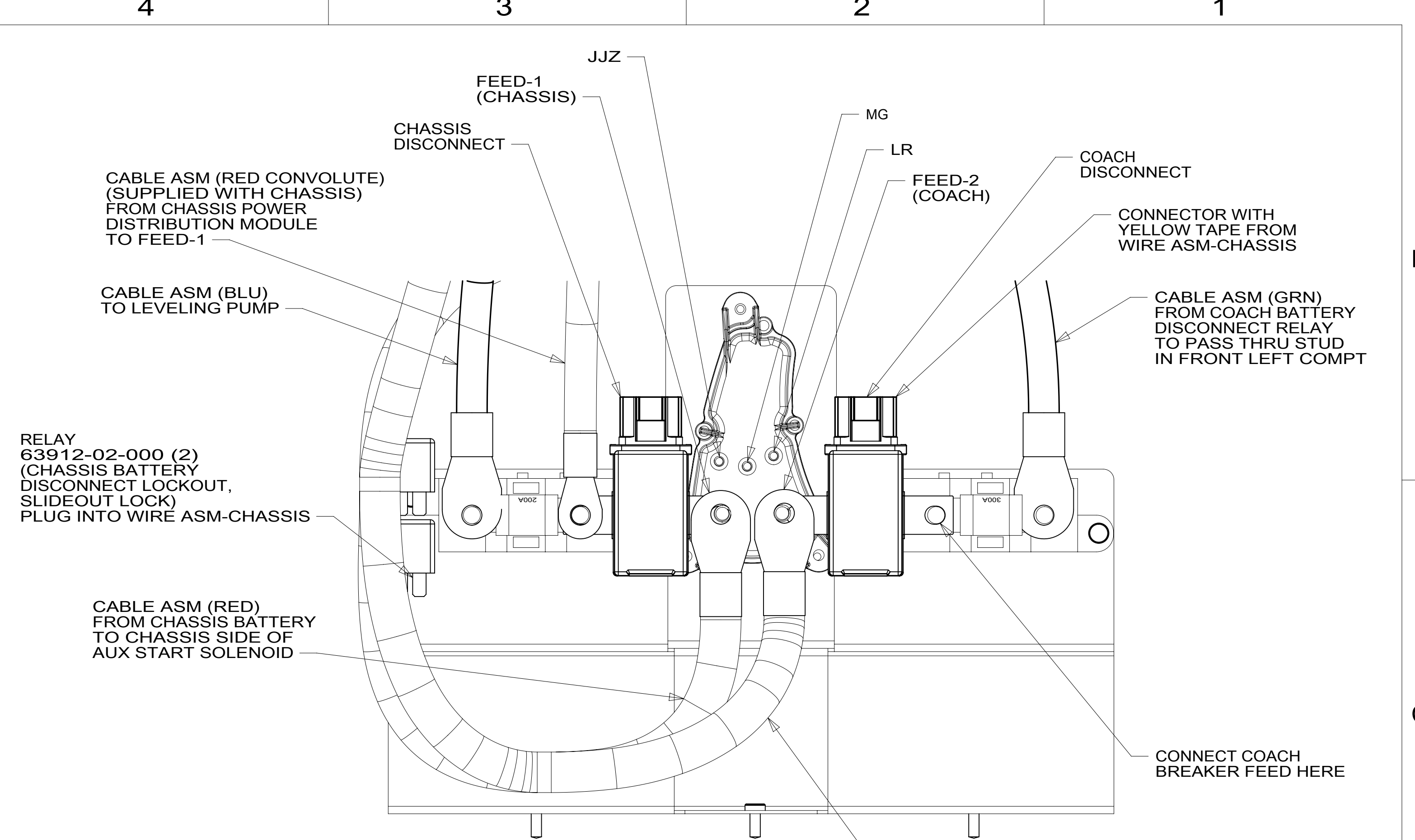
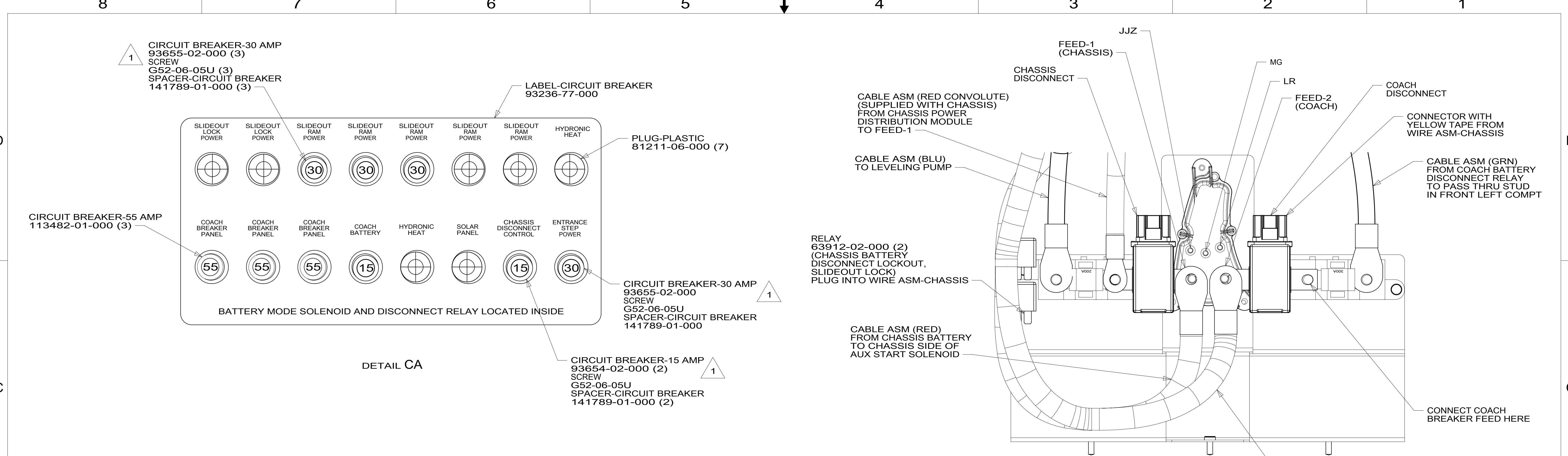
265 CODES/STANDARDS-CSA/CMVSS  
1B1 CODES/STANDARDS USA

FOR ELECTRICAL  
TORQUE  
SPECIFICATIONS  
SEE DWG NO.  
128783-01-000

X-X  
FOR  
ELECTRICAL  
CALLOUTS  
SEE DWG NO.  
121339-01-000

DESCRIPTION:		1B1	265
<b>WIRING INSTL-CHASSIS</b>			
SHEET:	ITEM/PART NO.:	REV	
2 OF 4	000166645 / 32980801000		

8 7 6 5 4 3 2 1 16-Apr-2019

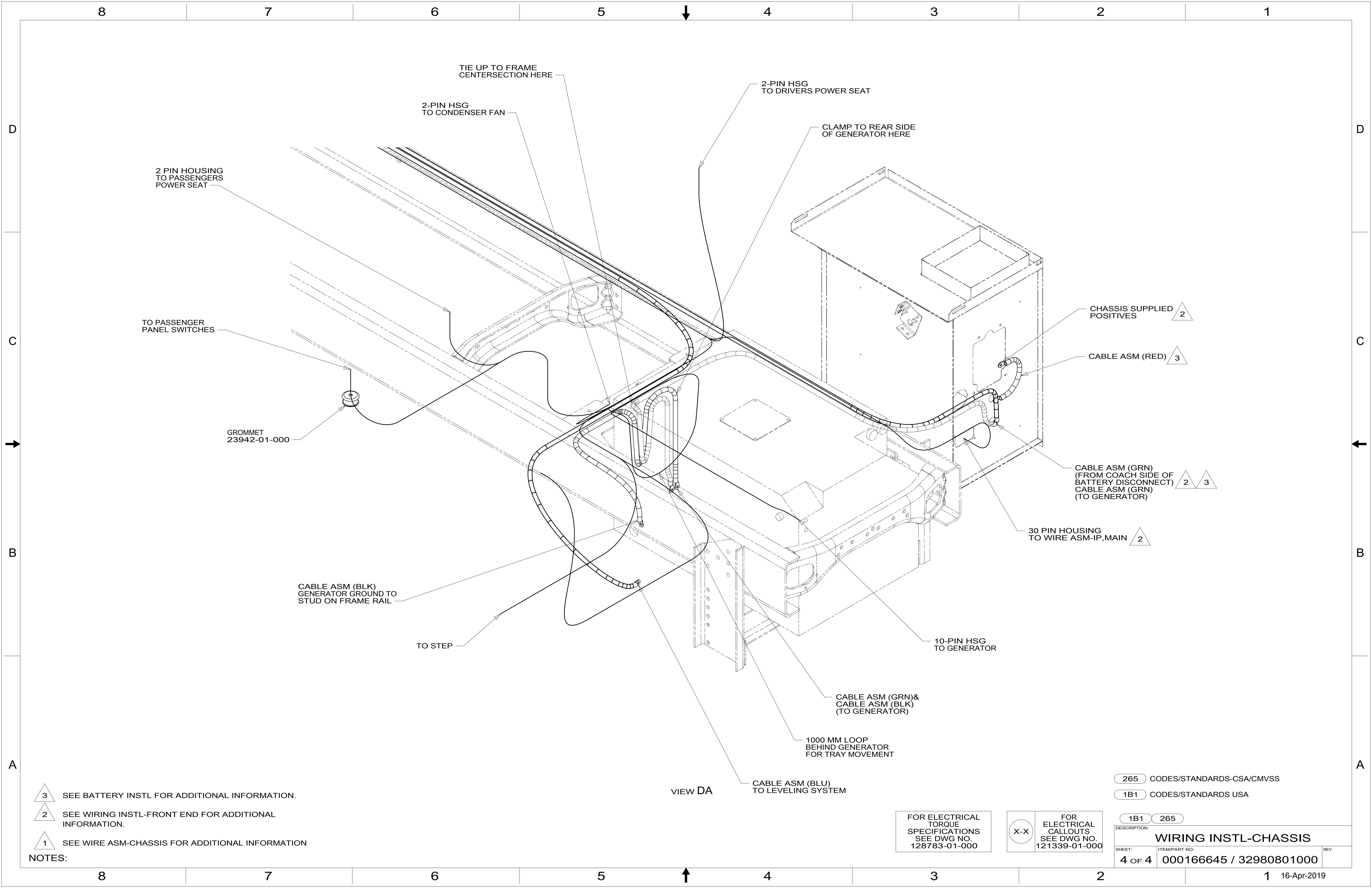


1 REPLACE EXISTING SCREW TO PROPERLY ATTACH BREAKER TO BUSS BAR.

FOR ELECTRICAL TORQUE SPECIFICATIONS SEE DWG NO. 128783-01-000

X-X FOR ELECTRICAL CALLOUTS SEE DWG NO. 121339-01-000

265	CODES/STANDARDS-CSA/CMVSS
1B1	CODES/STANDARDS USA
1B1	265
DESCRIPTION: <b>WIRING INSTL-CHASSIS</b>	
SHEET: 3 OF 4	ITEM/PART NO: 000166645 / 32980801000
REV	



- NOTES:
- 3 SEE BATTERY INSTL FOR ADDITIONAL INFORMATION.
  - 2 SEE WIRING INSTL-FRONT END FOR ADDITIONAL INFORMATION.
  - 1 SEE WIRE ASM-CHASSIS FOR ADDITIONAL INFORMATION

FOR ELECTRICAL TORQUE SPECIFICATIONS SEE DWG NO. 128783-01-000

FOR ELECTRICAL CALLOUTS SEE DWG NO. 121339-01-000

265 CODES/STANDARDS-CSA/CMVSS  
 1B1 CODES/STANDARDS USA

DESCRIPTION: <b>WIRING INSTL-CHASSIS</b>	
SHEET: <b>4 OF 4</b>	ITEM/PART NO: <b>000166645 / 32980801000</b>
REV	