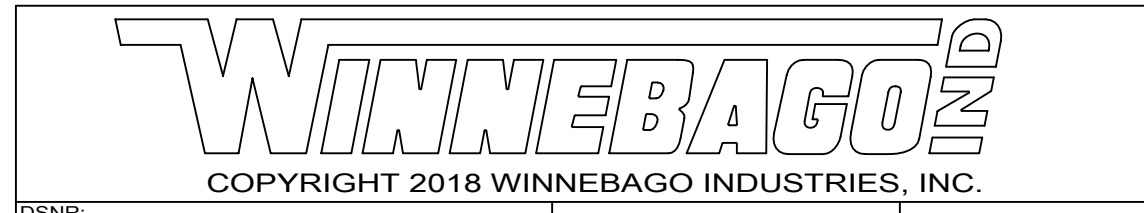


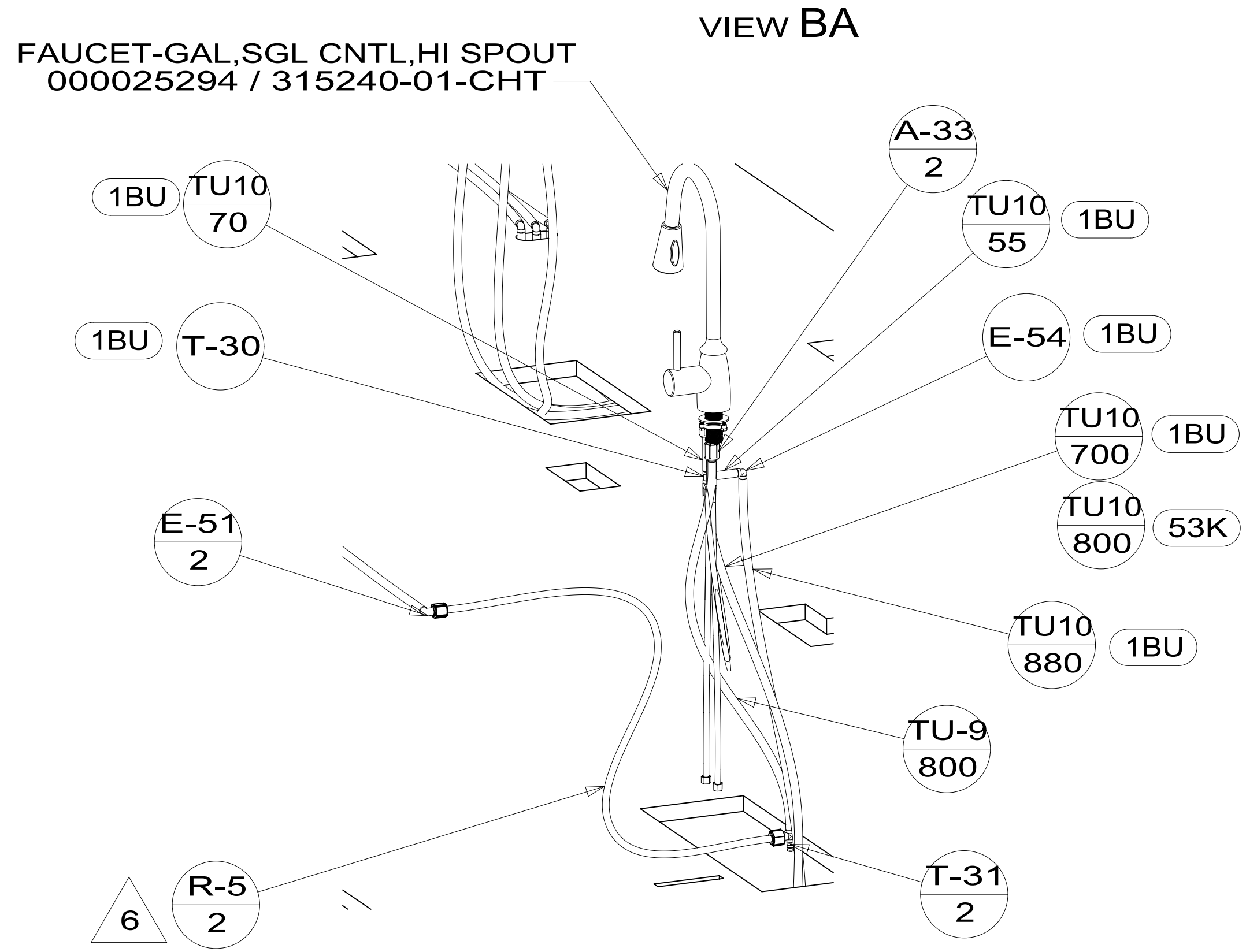
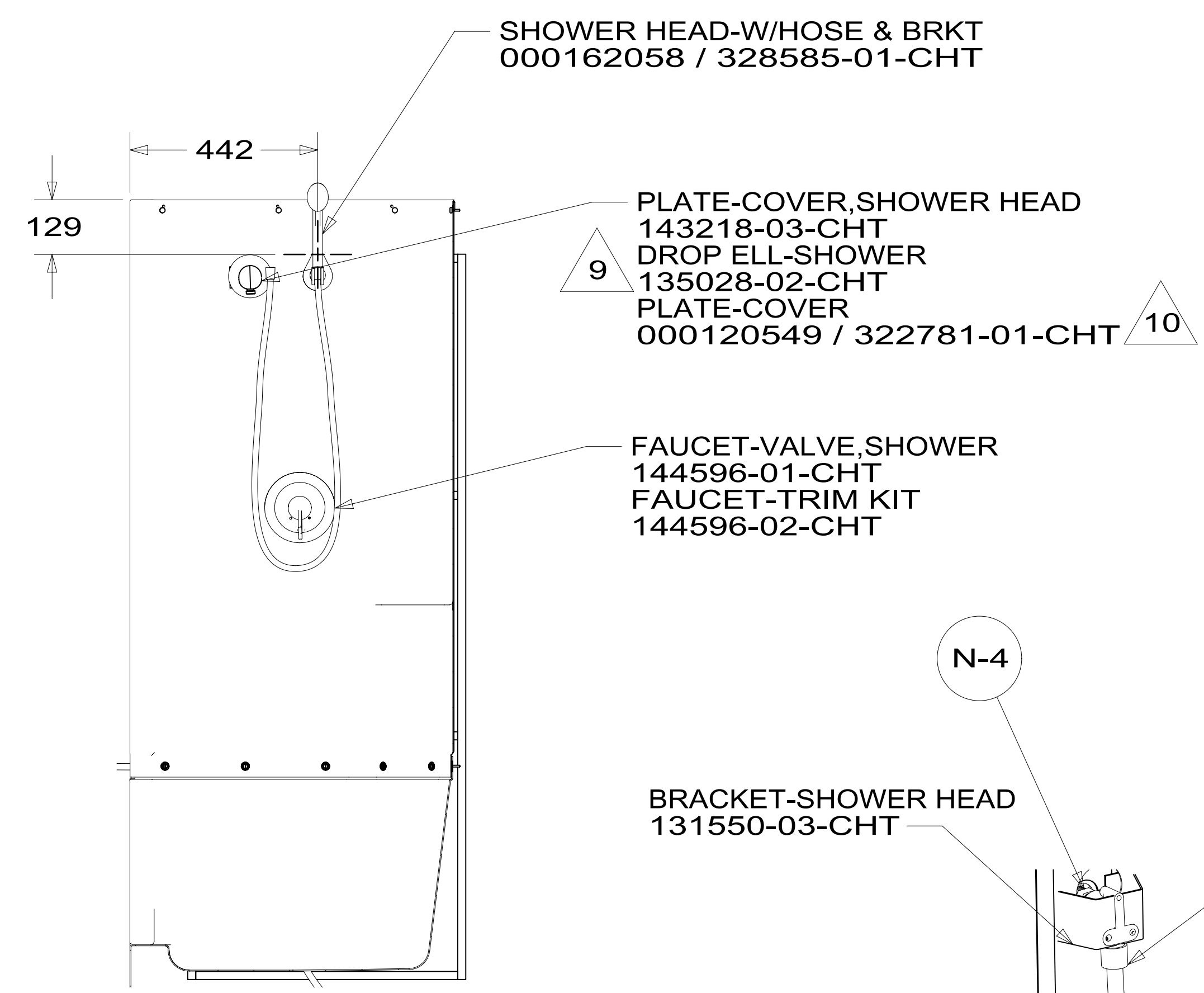
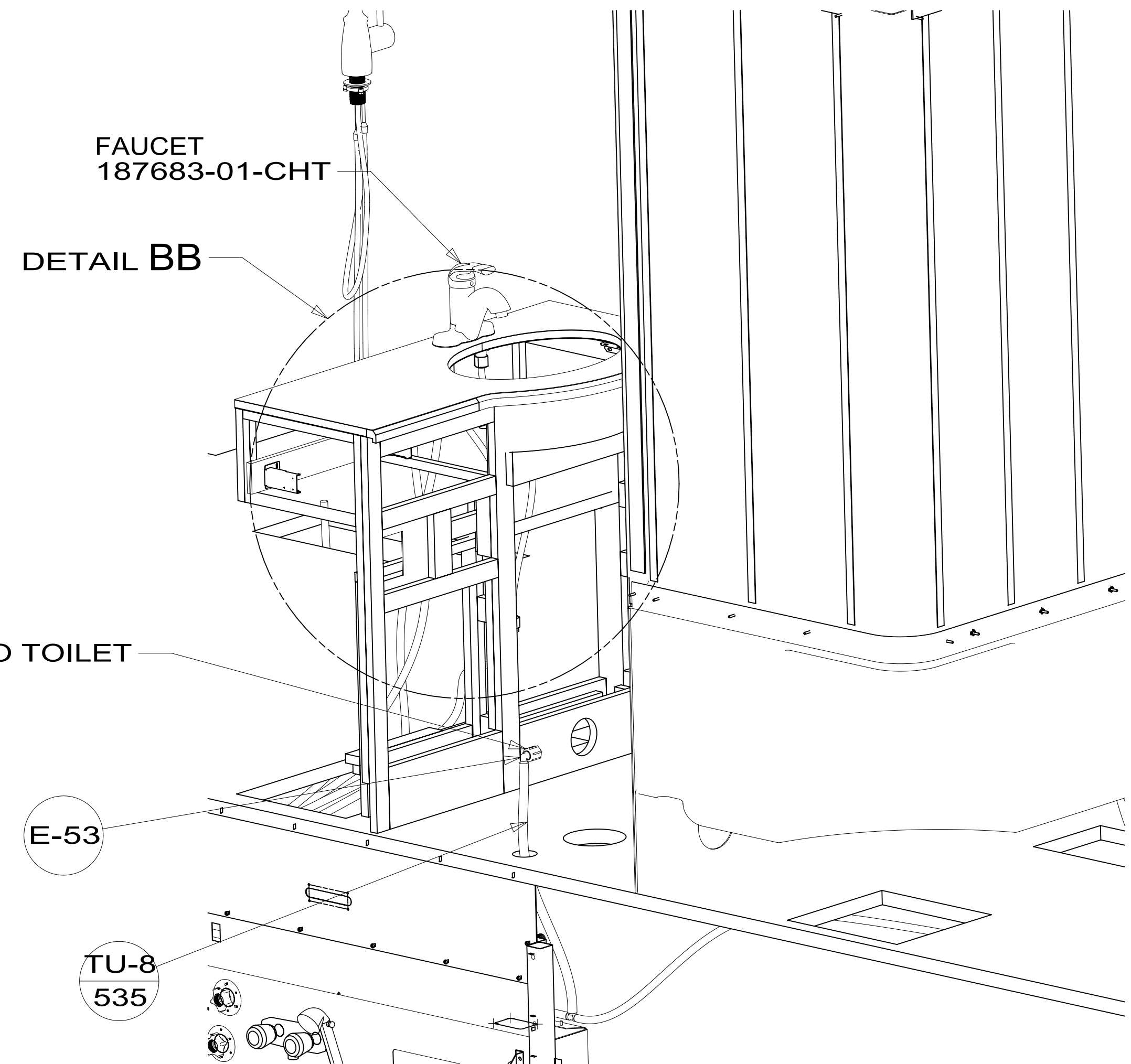
- 10 FOR INSTALLATION USE SILICON-ADHESIVE 000162556 / 328744-02-CHT. APPLY ON TOP OF PLATE, PLACE COVER ON, AND PUT ADHESIVE AROUND CORNER.
- 9 ELBOW TO BE TURN 45° BELOW HORIZONTAL LINE.
- 8. ALL CRIMP FITTINGS TO 1/2" PEX TUBING REQUIRE 1/2" CLAMP 000156249 / 326670-01-000.
- 7. ALL CRIMP FITTINGS TO 5/8" PEX TUBING REQUIRE 5/8" CLAMP 000156248 / 326669-01-000.
- 6 LABEL HOT AND COLD SUPPLY TUBES AND TAPE FITTING TO TUBE BEFORE CABINET SET TO PREVENT MOVEMENT.
- 5 ADD PIPE WRAP (LADDER SCRAP 110157-02-000) INSULATION.
- 4 ADD TEFLON TAPE 010405-02-000.
- 3. ALL TUBING TO BE SECURED AT 1200 INTERVALS MAXIMUM WITH CLAMP 010495-01-000 AND SCREW 000G67-10-12U OR EQUIVALENT.
- 2. TUBING TO BE INSTALLED WITH SUFFICIENT SLOPE TO PROVIDE DRAINAGE TO NEAREST VALVE.
- 1. PLASTIC FITTINGS TO BE SEALED WITH SEALANT 084456-01-000.

- 1BU WTR HTR TKLS W/RECIRCUL PUMP
- 53K WTR HTR-10GAL/ELECTRIC/LPGAS
- 21M WASHER/DRYER PREP
- 21S WASHER & DRYER-PAIR

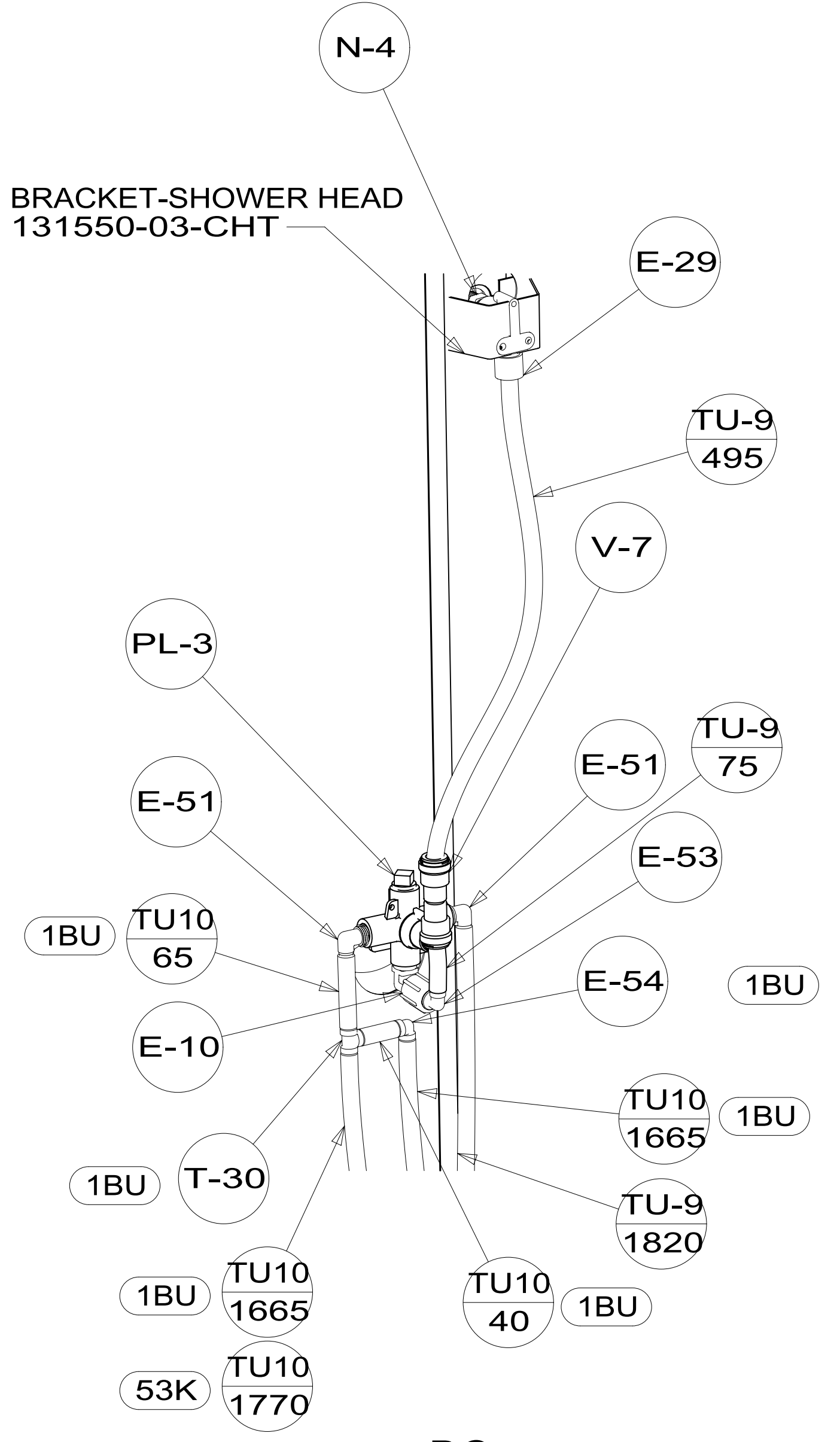
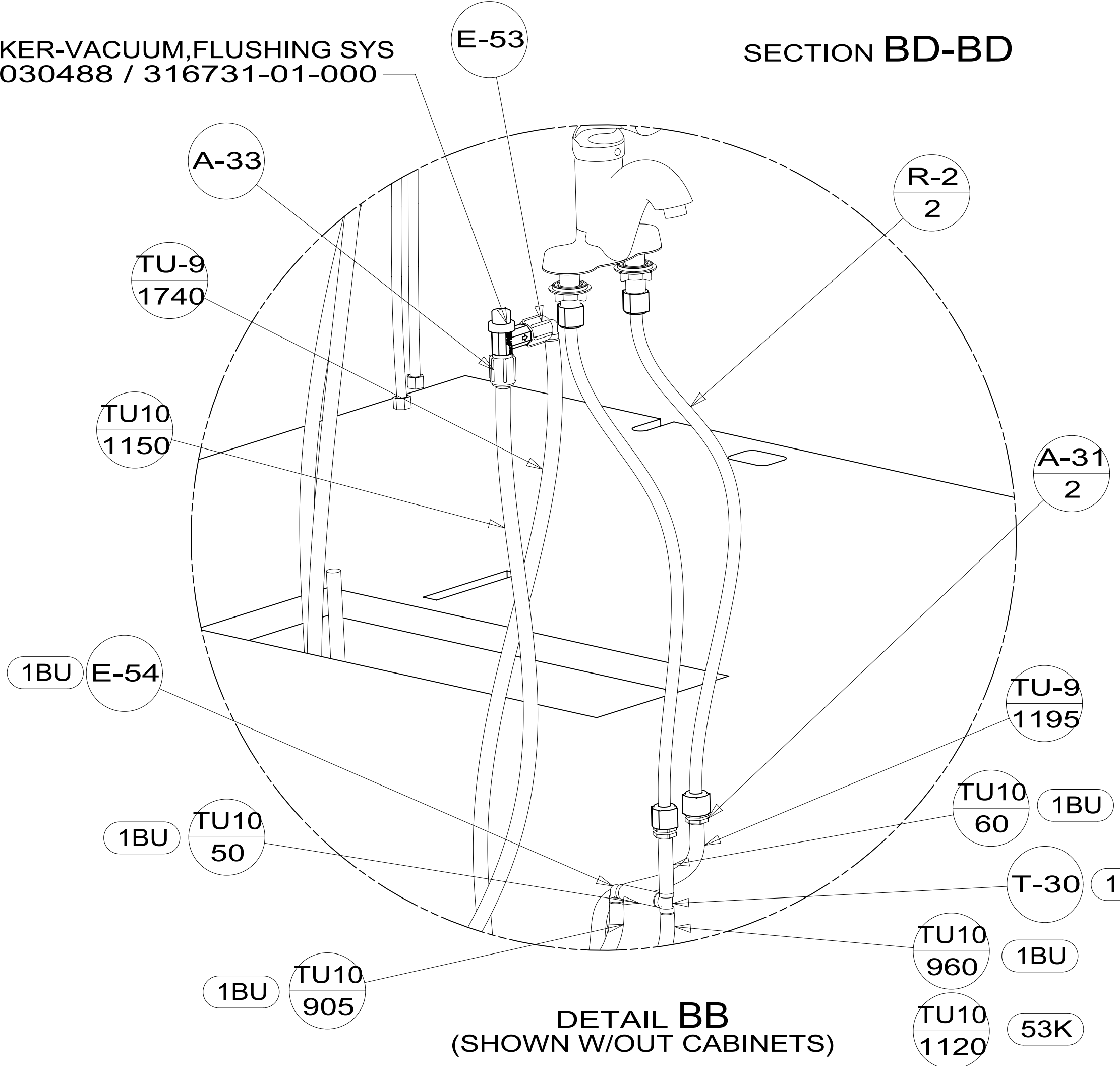


DSNR:		ALL DIMENSIONS ARE IN MILLIMETERS	
DIFFR:		MATERIAL:	
UNSPECIFIED TOLERANCES:			
WHOLE DIM (X)	± 3		
ONE-PLACE (X.X)	± 1.5		
TWO-PLACE (X.XX)	± 0.50		
ANGLE	± 1°		
REFER TO ES0018 FOR FASTENER TIGHTENING GUIDELINES		WEIGHT: (LBS)	FIRST USED: (REF)
DESCRIPTION:		19 L34T	
WATER SYSTEM INSTL			
SHEET:	ITEM/PART NO:	REV	
1 OF 5	000166535 / 32976201000		

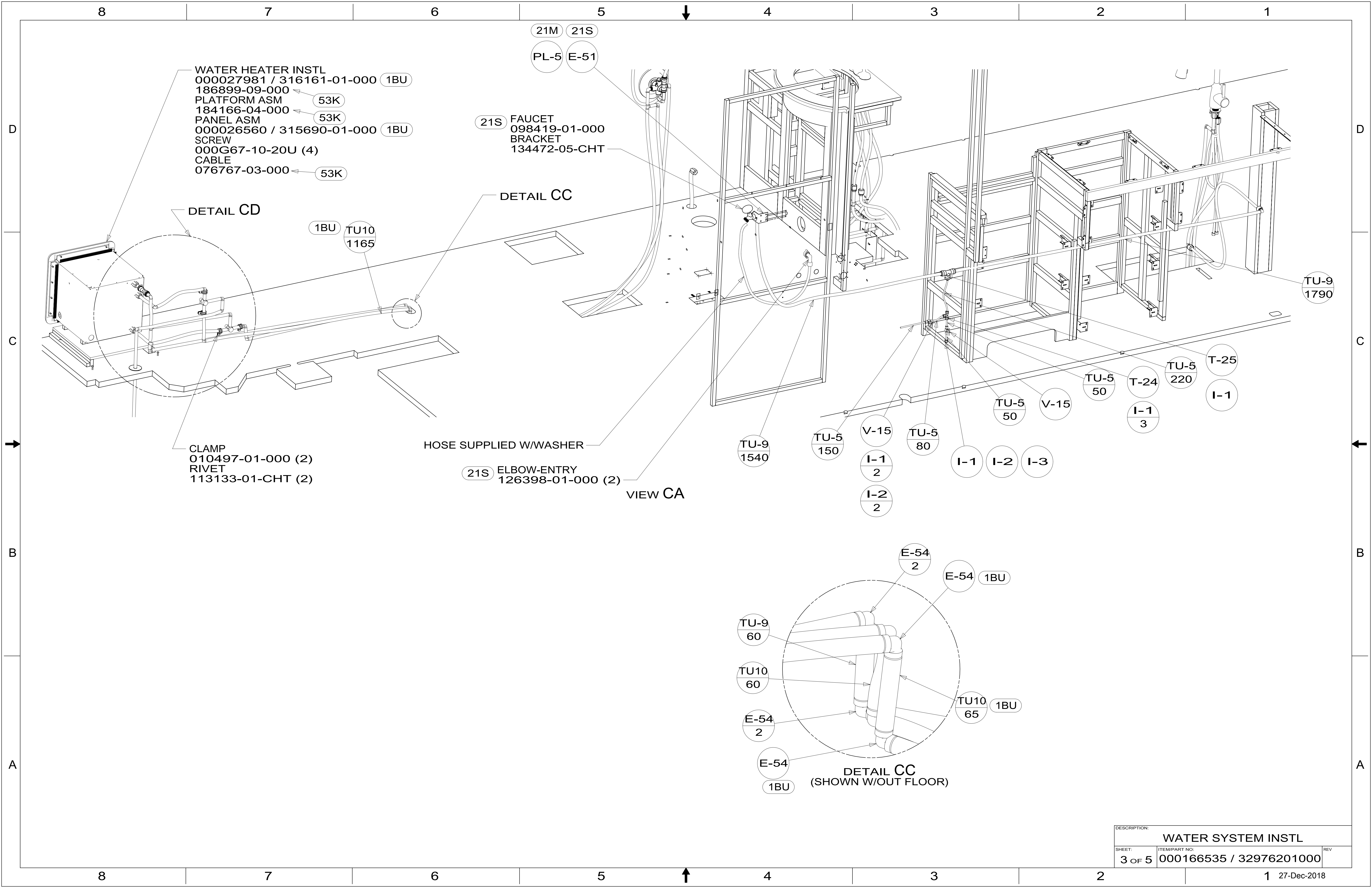
X-X
FOR WATER CALLOUTS SEE DWG NO. 000209446 / 303369-01-000

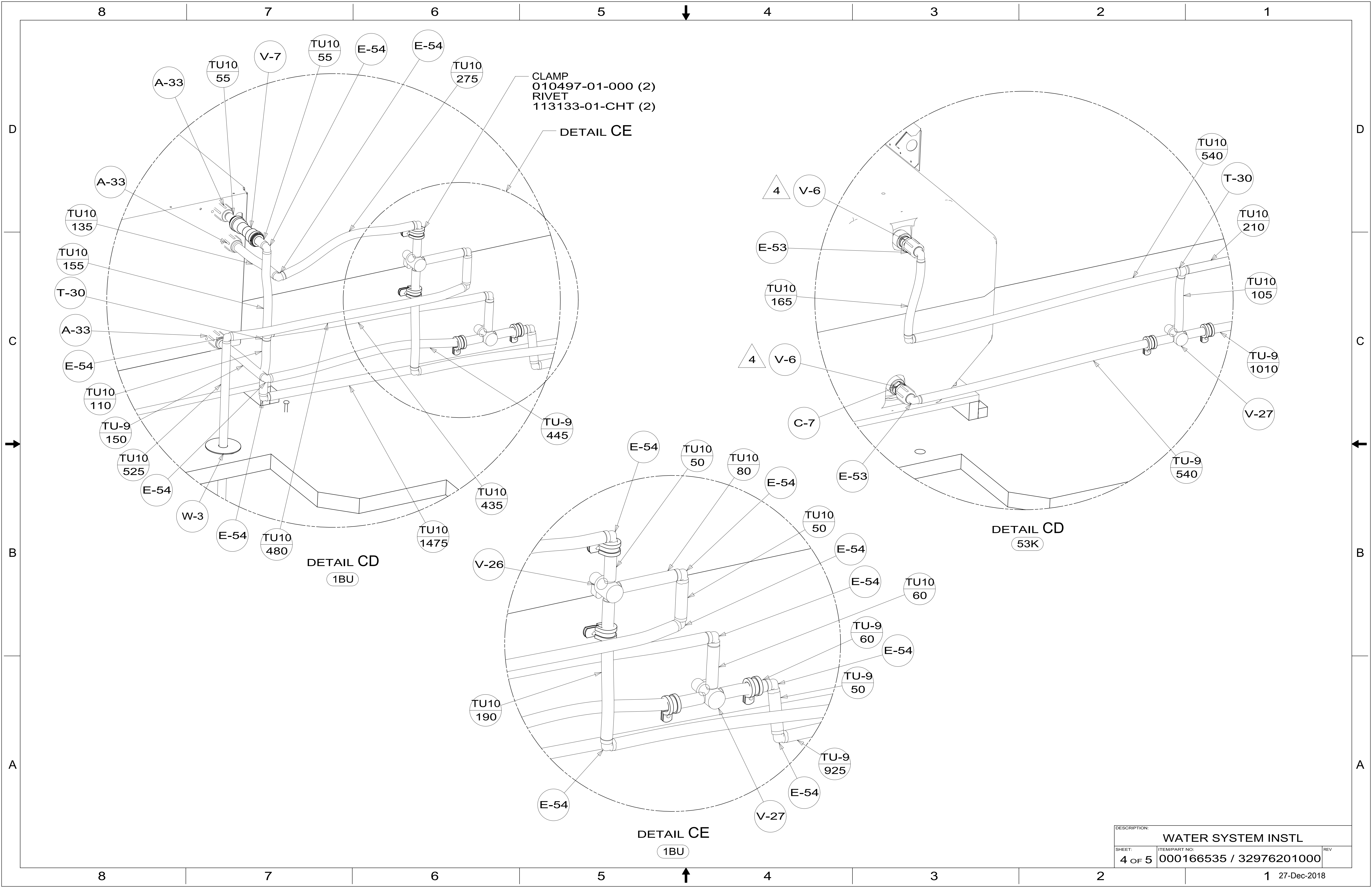


BREAKER-VACUUM,FLUSHING SYS
000030488 / 316731-01-000



DESCRIPTION:		
WATER SYSTEM INSTL		
SHEET:	ITEM/PART NO:	REV
2 OF 5	000166535 / 32976201000	





CLAMP
010497-01-000 (2)
RIVET
113133-01-CHT (2)

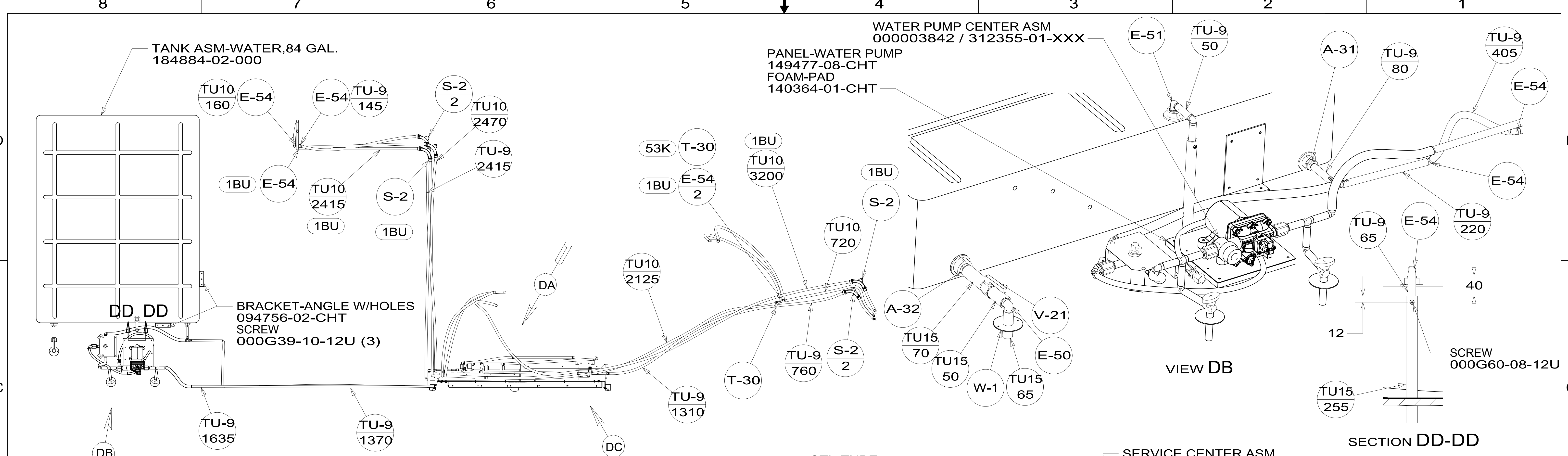
DETAIL CE

DETAIL CD
53K

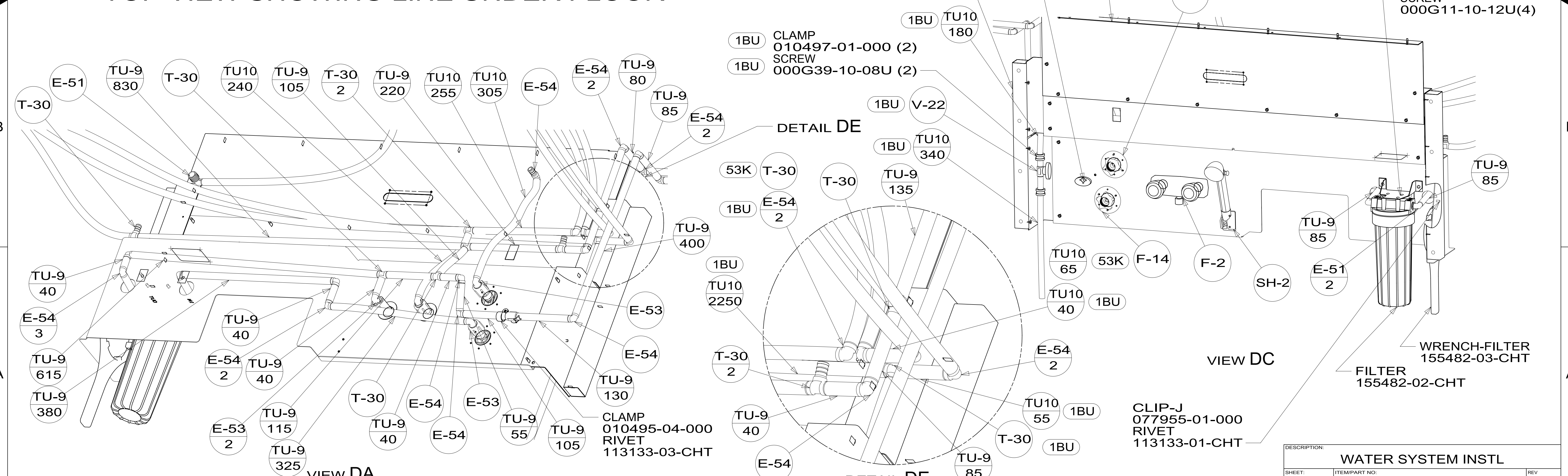
DETAIL CD
1BU

DETAIL CE
1BU

DESCRIPTION: WATER SYSTEM INSTL		
SHEET: 4 OF 5	ITEM/PART NO: 000166535 / 32976201000	REV
		1 27-Dec-2018



TOP VIEW SHOWING LINE UNDER FLOOR



DESCRIPTION:		
WATER SYSTEM INSTL		
SHEET:	ITEM/PART NO.:	REV:
5 OF 5	000166535 / 32976201000	