

PLATE-WALL  
149557-10-CHT (787)  
149557-09-CHT (789)  
SCREW  
G67-10-08U (2)

RECEIVER-DISH,WALLY  
000100988 / 327103-01-000  
FASTENER-DUAL LOCK  
85774-01-000 (200 MM)  
85774-02-000 (200 MM) (789)

BLU-RAY PLAYER W/WIFI  
000183221 / 302822-01-000  
FASTENER-DUAL LOCK  
85774-01-000 (200 MM)  
85774-02-000 (200 MM)

SPLITTER-HDMI, 1X2  
178632-01-000  
FASTENER-DUAL LOCK  
85774-01-000 (100 MM)  
85744-02-000 (100 MM)

(787 & 45B) & (789 & 45B) BRACKET-ANTENNA,SATELLITE  
000023112 / 314657-01-CHT  
SCREW  
000G39-08-12U (2)

RCP-2 (PUR)  
OVHD FRONT  
PLATE-WALL,  
POWER SUPPLY  
179004-02-CHT

PANEL ASM  
155127-35-XXX (789, 45B)  
155127-36-XXX (787, 45D)  
000007511 / 310614-01-XXX (78C, 45D, 45B)

GROMMET-EDGE LINER  
114208-05-000

CONTROL-INTERIOR (787, 789)  
183415-05-000  
183415-02-000  
FASTENER-DUAL LOCK  
85774-01-000 (200 MM)  
85774-02-000 (200 MM)

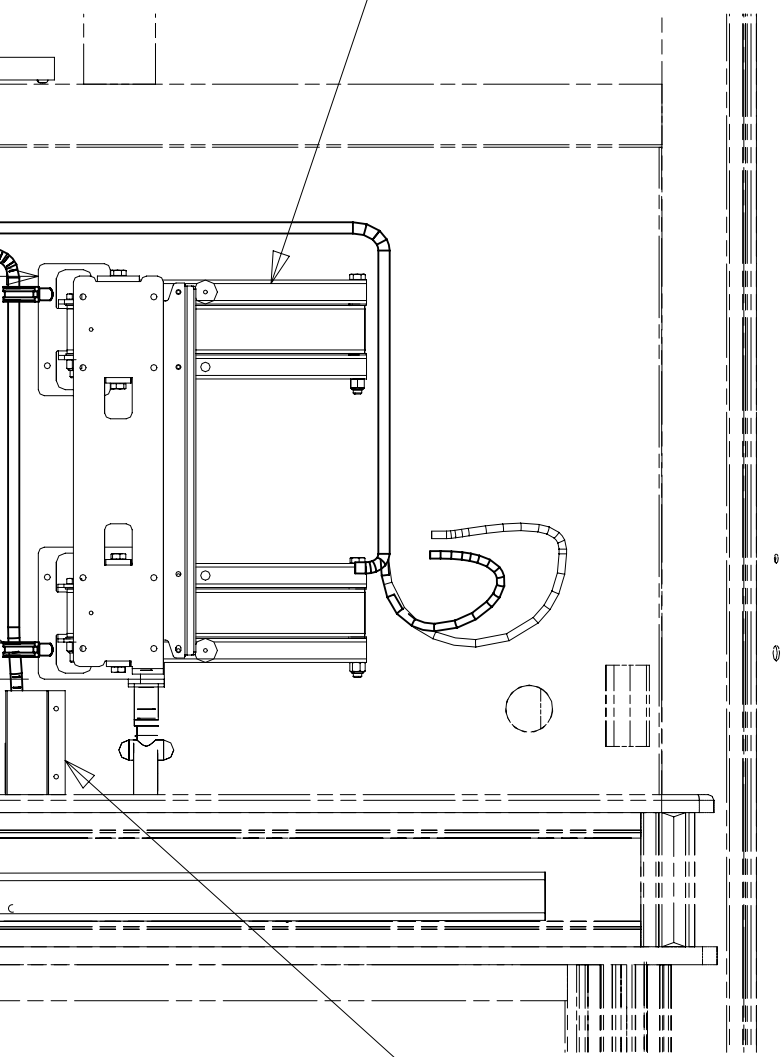
BOLT-HOOD ADJUSTING  
058786-01-000 (2)  
NUT  
D39-05-00U (2)

TV-50" FLAT  
PANEL ELED, HDTV  
194671-01-000  
BRACKET-MOUNT,TV  
195253-01-CHT  
SCREW  
G11-08-12U (4)  
PLATE-MOUNTING,TV  
000178332 / 302680-01-CHT  
SCREW  
G39-10-12U (4)

BRACKET-TV SWING MOUNT  
179241-04-CHT  
SCREW  
G42-04-16U (8)

CLAMP  
10497-03-000 (2)  
SCREW  
G39-08-12U (2)

SPEAKER-SOUNDBAR, WIRELESS SUB, SAMSUNG  
000170008 / 330888-01-000  
FASTENER-DUAL LOCK  
085774-01-000 (50 MM)(2)  
085774-02-000 (50 MM)(2)



VIEW AA

COVER-WIRE  
176981-01-CHT

- (789) SAT ANT, AUTO DISH NETWORK
- (45D) LOFT BED - WITHOUT
- (45B) LOFT BED
- (78C) SATELLITE SYSTEM READY
- (787) SAT TV ANT, AUTO DIRECTV
- (265) CODES/STANDARDS-CSA/CMVSS
- (1B1) CODES/STANDARDS USA

**WINNEBAGO**  
COPYRIGHT 2016 WINNEBAGO INDUSTRIES, INC.

DSNR:	ALL DIMENSIONS ARE IN MILLIMETERS
DFFR:	MATERIAL:
UNSPECIFIED TOLERANCES:	WEIGHT: (LBS)
WHOLE DIM (X) : 3	FIRST USED:
ONE-PLACE (X.X) : 1.5	19 L38W
TWO-PLACE (X.XX) : 0.50	
ANGLE : 1°	
REFER TO ES0018 FOR FASTENER TIGHTENING GUIDELINES	
DESCRIPTION: <b>WIRING INSTL-TV/DVD</b>	
SHEET: 1 OF 3	ITEM/PART NO: 000166411 / 32972701000
REF: 1	REV: 07-Nov-2018

2 USE TIE-WIRE 8343-01 TO SUPPORT WIRE HERE.  
1 INTERIOR CONTROL CONNECTS TO SATELLITE DATA CABLE. SEE ROOF ASM FOR ADDITIONAL INFORMATION.

FOR ELECTRICAL TORQUE SPECIFICATIONS SEE DWG NO. 128783-01-000  
FOR ELECTRICAL CALLOUTS SEE DWG NO. 121339-01-000

8 7 6 5 4 3 2 1



D

D

C

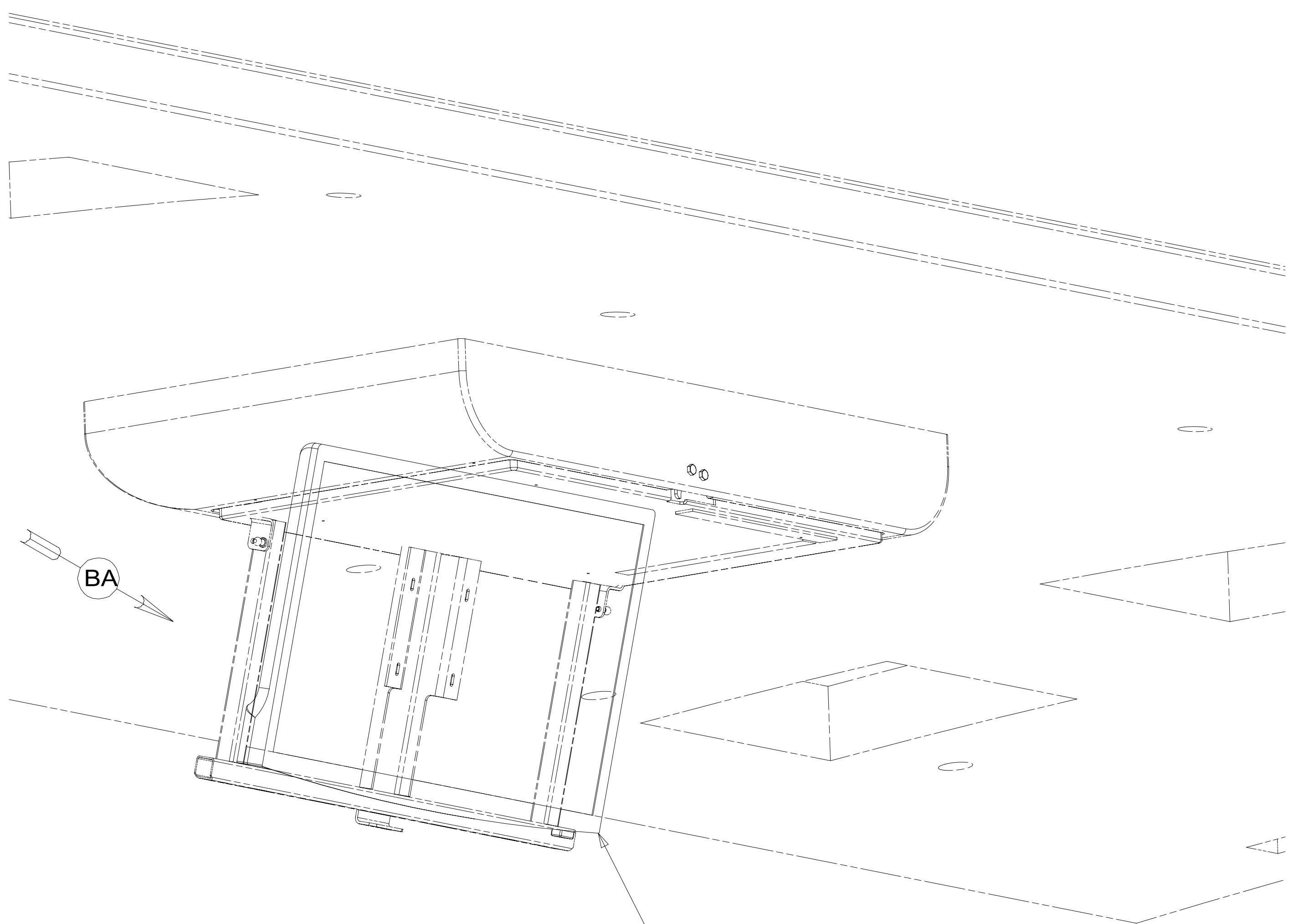
C

B

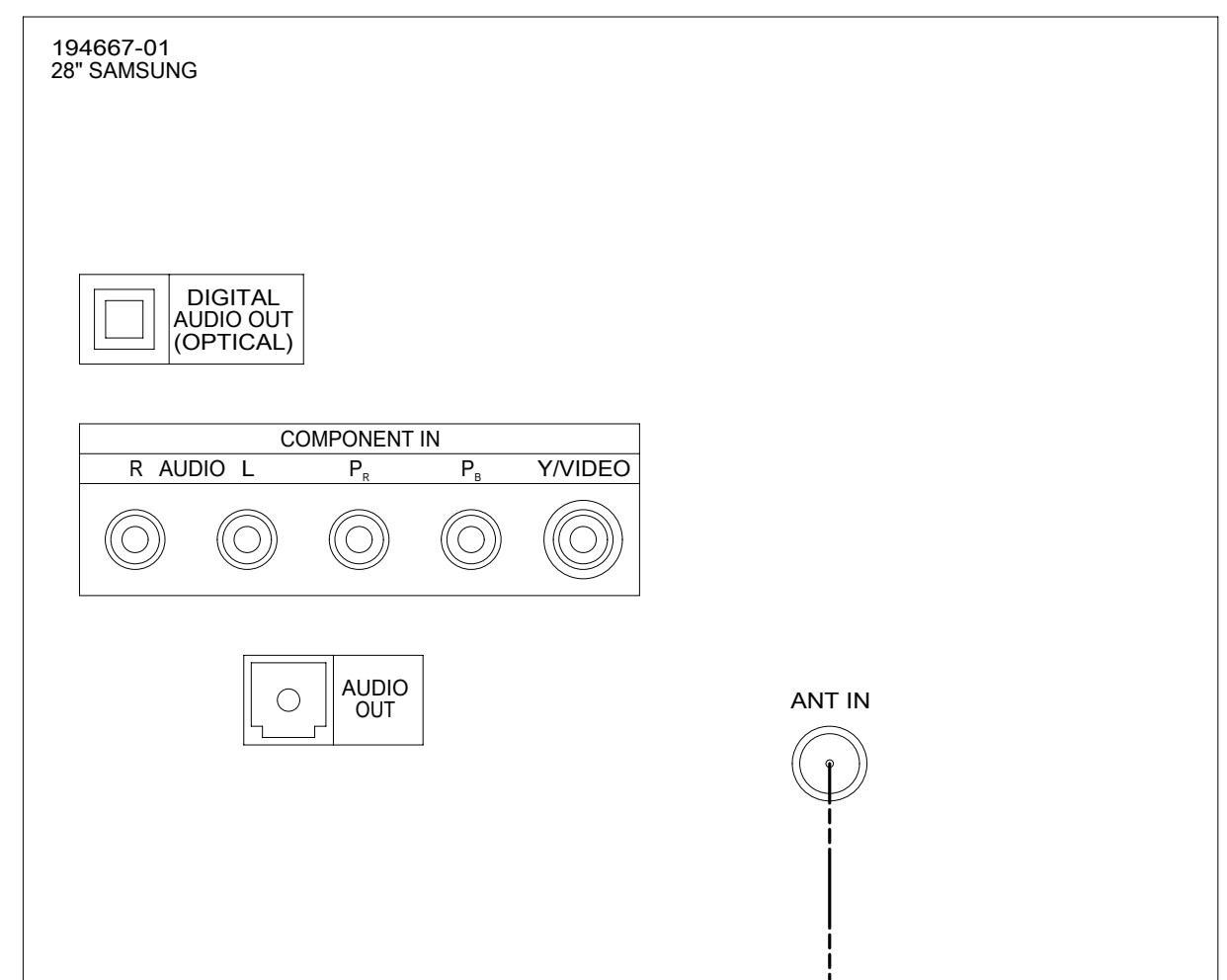
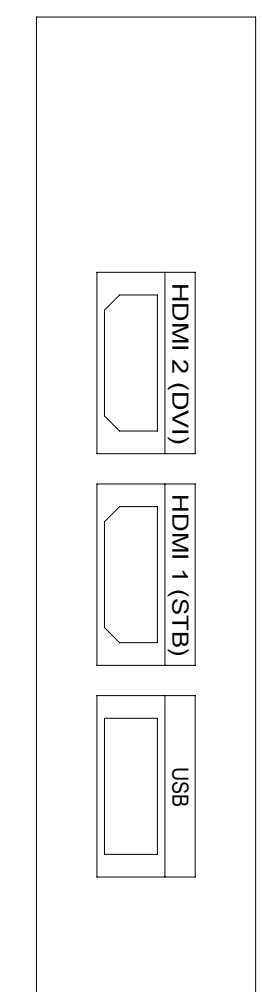
B

A

A



TV-28\"/>



CABLE ASM-COAX (GRN)  
FROM WIRE ASM-ROOF

VIEW BA

265 CODES/STANDARDS-CSA/CMVSS  
1B1 CODES/STANDARDS USA

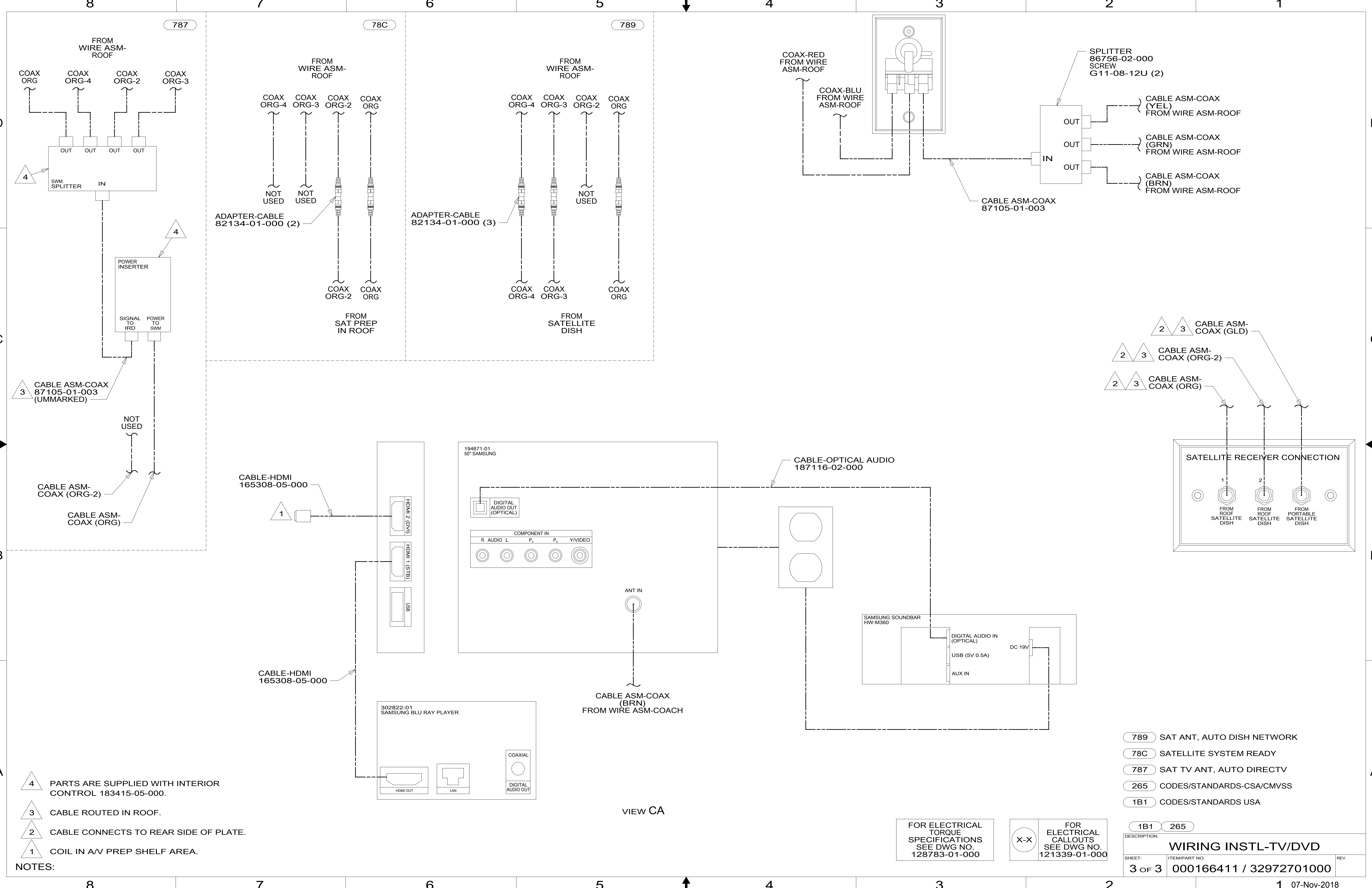
FOR ELECTRICAL TORQUE SPECIFICATIONS SEE DWG NO. 128783-01-000

FOR ELECTRICAL CALLOUTS SEE DWG NO. 121339-01-000

DESCRIPTION:	
1B1 265 WIRING INSTL-TV/DVD	
SHEET:	ITEM/PART NO. REV
2 OF 3	000166411 / 32972701000

8 7 6 5 4 3 2 1 07-Nov-2018





- NOTES:
- 4 PARTS ARE SUPPLIED WITH INTERIOR CONTROL 183415-05-000.
  - 3 CABLE ROUTED IN ROOF.
  - 2 CABLE CONNECTS TO REAR SIDE OF PLATE.
  - 1 COIL IN AV PREP SHELF AREA.

- 789 SAT ANT, AUTO DISH NETWORK
- 78C SATELLITE SYSTEM READY
- 787 SAT TV ANT, AUTO DIRECTV
- 265 CODES/STANDARDS-CSA/CMVSS
- 1B1 CODES/STANDARDS USA

FOR ELECTRICAL TORQUE SPECIFICATIONS SEE DWG NO. 128783-01-000

FOR ELECTRICAL CALLOUTS SEE DWG NO. 121339-01-000

DESCRIPTION:		<b>WIRING INSTL-TV/DVD</b>	
SHEET:	ITEM/PART NO.:	REV	
3 OF 3	000166411 / 32972701000		

VIEW CA