

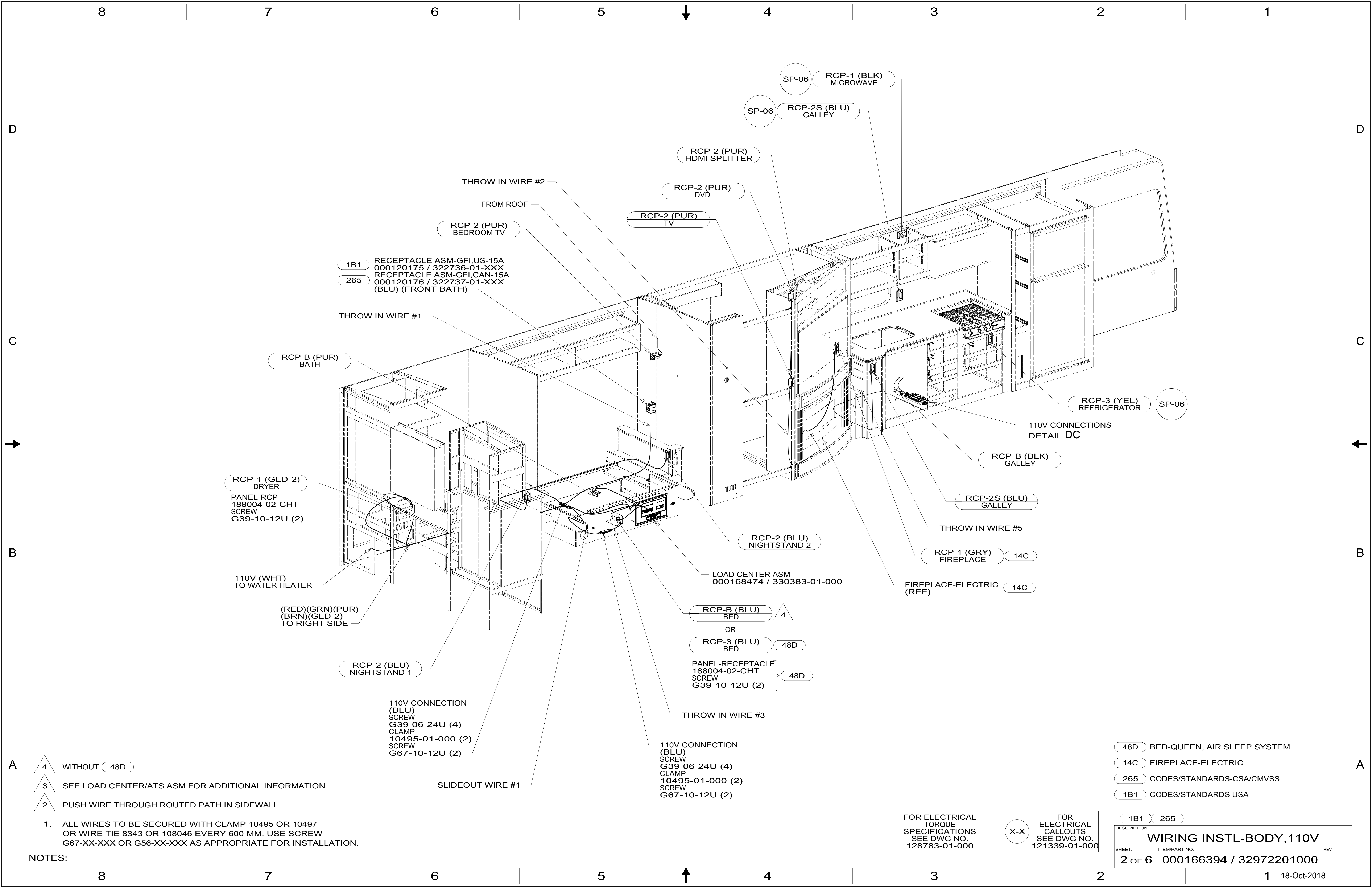
FOR ELECTRICAL TORQUE SPECIFICATIONS SEE DWG NO. 128783-01-000

FOR ELECTRICAL CALLOUTS SEE DWG NO. 121339-01-000

- 1DF EXT TV ENTERTAINMENT CENTER
- 14C FIREPLACE-ELECTRIC
- 78J ELECTRICAL SYSTEM-50 AMP
- 265 CODES/STANDARDS-CSA/CMVSS
- 1B1 CODES/STANDARDS USA

WINNEBAGO COPYRIGHT 2016 WINNEBAGO INDUSTRIES, INC.	
DSNR:	ALL DIMENSIONS ARE IN MILLIMETERS
DFFR:	
UNSPECIFIED TOLERANCES:	MATERIAL:
WHOLE DIM (X) : 3	
ONE-PLACE (X.X) : 1.5	
TWO-PLACE (X.XX) : 0.50	
ANGLE : 1°	
REFER TO ES0018 FOR FASTENER TIGHTENING GUIDELINES	WEIGHT: (LBS) FIRST USED: 19 L38W
DESCRIPTION: WIRING INSTL-BODY, 110V	
SHEET: 1 OF 6	ITEM/PART NO: 000166394 / 32972201000
REF:	1 18-Oct-2018

- NOTES:
1. ALL WIRES TO BE SECURED WITH CLAMP 10495 OR 10497 OR WIRE TIE 8343 OR 108046 EVERY 600 MM. USE SCREW G67-XX-XXX OR G56-XX-XXX AS APPROPRIATE FOR INSTALLATION.
 2. CLAMP TO FLOOR SUPPORT TUBES AS NECESSARY WITH CLAMP 10497-01-000.
 3. WIRES THAT REST ON WIRE TRAYS ARE TO BE TIED DOWN WITH WIRE TIE 8343-04-000.
 4. SEE GENERATOR INSTL FOR ADDITIONAL INFORMATION.
 5. SEE LOAD CENTER/ATS ASM FOR ADDITIONAL INFORMATION.
 6. ROUTE ENGINE HEATER POWER CORD THROUGH GROMMET.
 7. WIRE IN SIDEWALL.



1B1 RECEPTACLE ASM-GFI,US-15A
000120175 / 322736-01-XXX
265 RECEPTACLE ASM-GFI,CAN-15A
000120176 / 322737-01-XXX
(BLU) (FRONT BATH)

RCP-1 (GLD-2) DRYER
PANEL-RCP
188004-02-CHT
SCREW
G39-10-12U (2)

110V (WHT)
TO WATER HEATER

(RED)(GRN)(PUR)
(BRN)(GLD-2)
TO RIGHT SIDE

RCP-2 (BLU)
NIGHTSTAND 1

110V CONNECTION
(BLU)
SCREW
G39-06-24U (4)
CLAMP
10495-01-000 (2)
SCREW
G67-10-12U (2)

SLIDEOUT WIRE #1

RCP-2 (PUR)
DVD

RCP-2 (PUR)
TV

RCP-2 (PUR)
HDMI SPLITTER

RCP-2 (BLU)
NIGHTSTAND 2

LOAD CENTER ASM
000168474 / 330383-01-000

RCP-B (BLU)
BED

RCP-3 (BLU)
BED

PANEL-RECEPTACLE
188004-02-CHT
SCREW
G39-10-12U (2)

THROW IN WIRE #3

110V CONNECTION
(BLU)
SCREW
G39-06-24U (4)
CLAMP
10495-01-000 (2)
SCREW
G67-10-12U (2)

SP-06 RCP-1 (BLK)
MICROWAVE

SP-06 RCP-2S (BLU)
GALLEY

RCP-3 (YEL)
REFRIGERATOR

110V CONNECTIONS
DETAIL DC

RCP-B (BLK)
GALLEY

RCP-2S (BLU)
GALLEY

THROW IN WIRE #5

RCP-1 (GRY)
FIREPLACE

FIREPLACE-ELECTRIC
(REF)

4 WITHOUT 48D

3 SEE LOAD CENTER/ATS ASM FOR ADDITIONAL INFORMATION.

2 PUSH WIRE THROUGH ROUTED PATH IN SIDEWALL.

1. ALL WIRES TO BE SECURED WITH CLAMP 10495 OR 10497
OR WIRE TIE 8343 OR 108046 EVERY 600 MM. USE SCREW
G67-XX-XXX OR G56-XX-XXX AS APPROPRIATE FOR INSTALLATION.

NOTES:

FOR ELECTRICAL
TORQUE
SPECIFICATIONS
SEE DWG NO.
128783-01-000

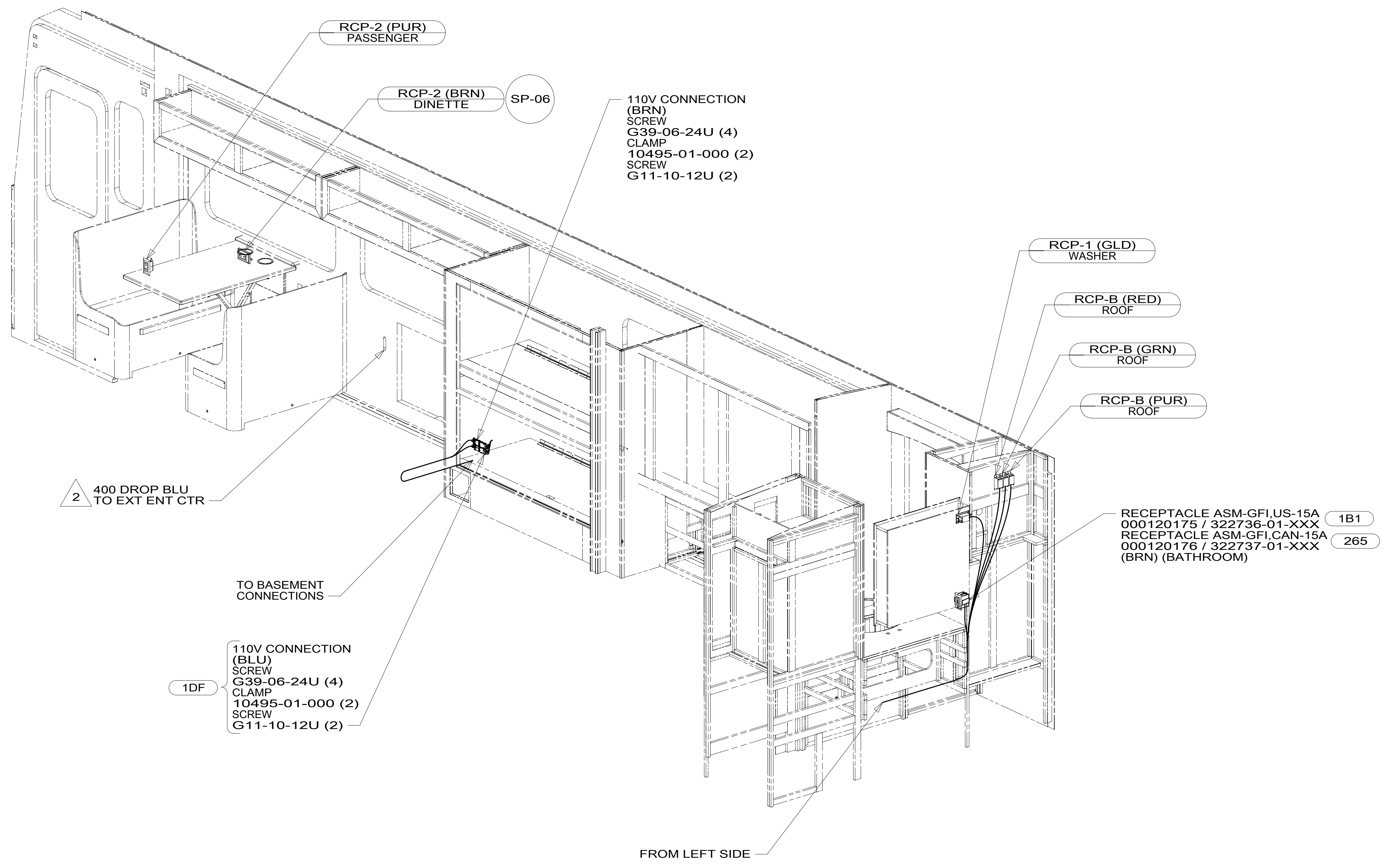
FOR ELECTRICAL
CALLOUTS
SEE DWG NO.
121339-01-000

- 48D BED-QUEEN, AIR SLEEP SYSTEM
- 14C FIREPLACE-ELECTRIC
- 265 CODES/STANDARDS-CSA/CMVSS
- 1B1 CODES/STANDARDS USA

DESCRIPTION: WIRING INSTL-BODY, 110V	
SHEET: 2 OF 6	ITEM/PART NO: 000166394 / 32972201000
REV 18-Oct-2018	

8 7 6 5 4 3 2 1

D
C
B
A



2 SEE ENTERTAINMENT CTR COMPL-TV FOR ADDITIONAL INFORMATION.

1. ALL WIRES TO BE SECURED WITH CLAMP 10495 OR 10497 OR WIRE TIE 8343 OR 108046 EVERY 600 MM. USE SCREW G67-XX-XXX OR G56-XX-XXX AS APPROPRIATE FOR INSTALLATION.

NOTES:

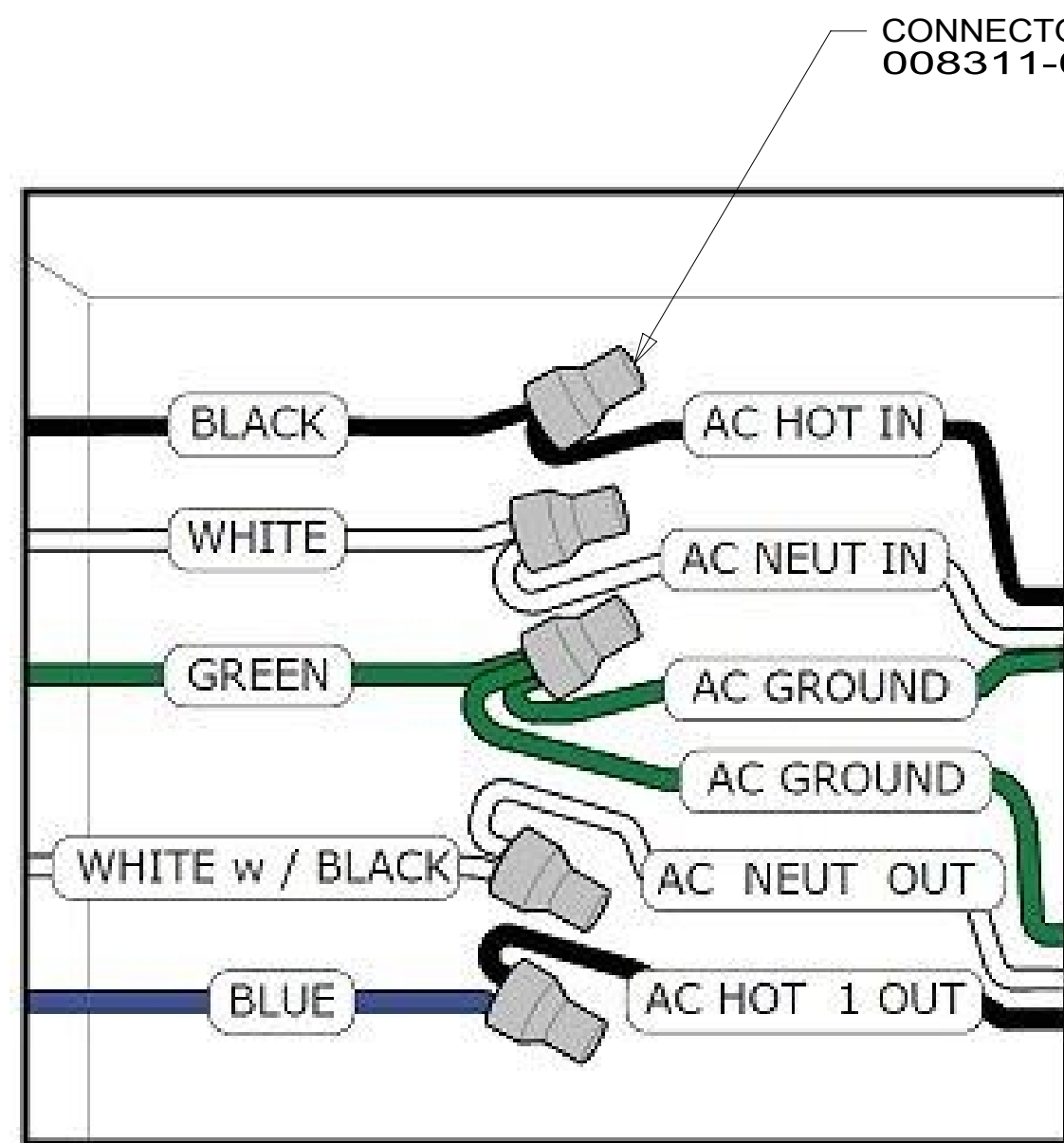
FOR ELECTRICAL TORQUE SPECIFICATIONS SEE DWG NO. 128783-01-000

FOR ELECTRICAL CALLOUTS SEE DWG NO. 121339-01-000

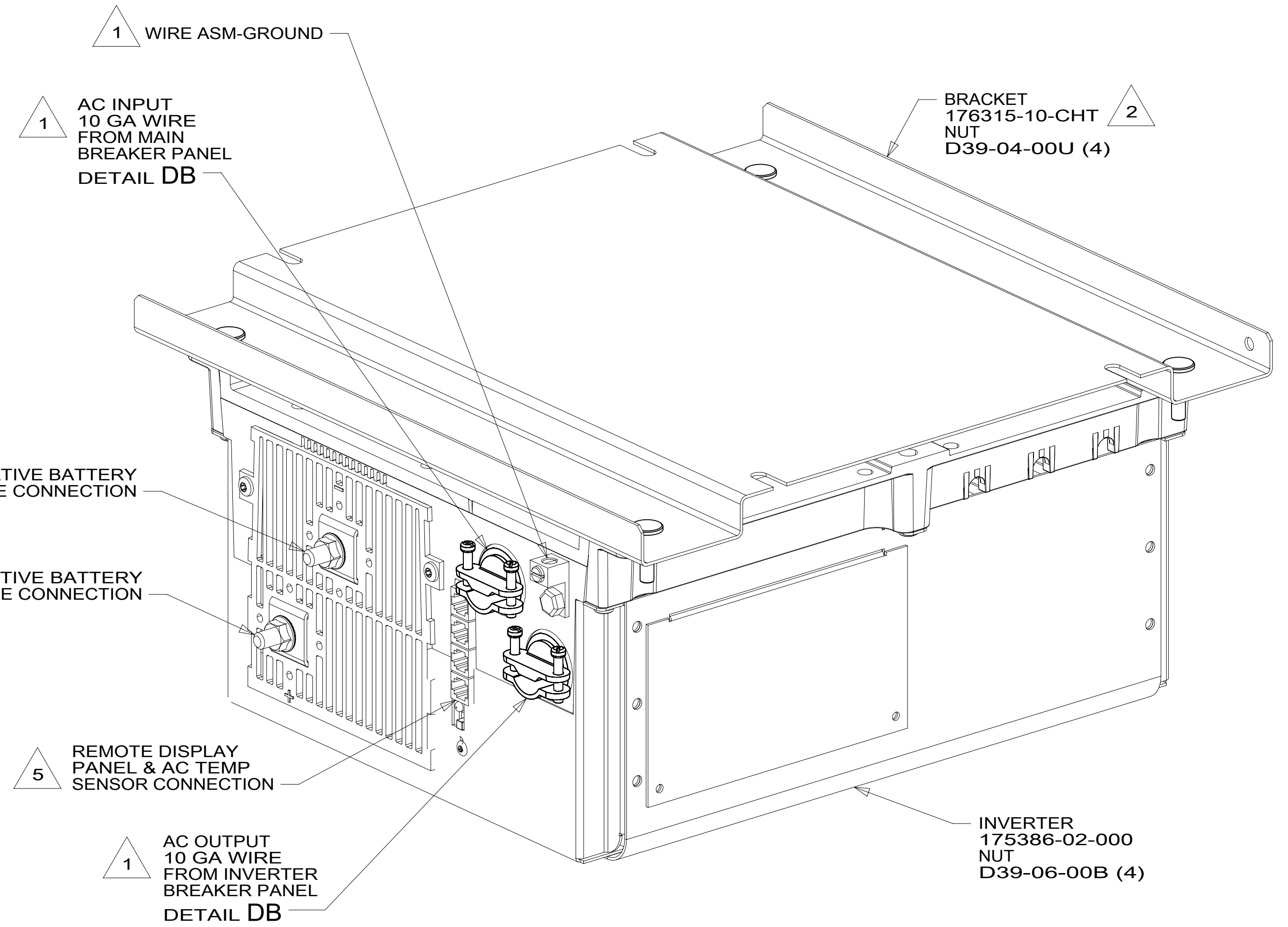
- 1DF EXT TV ENTERTAINMENT CENTER
- 14C FIREPLACE-ELECTRIC
- 265 CODES/STANDARDS-CSA/CMVSS
- 1B1 CODES/STANDARDS USA

DESCRIPTION:	
WIRING INSTL-BODY, 110V	
SHEET:	ITEM/PART NO. REV
3 OF 6	000166394 / 32972201000

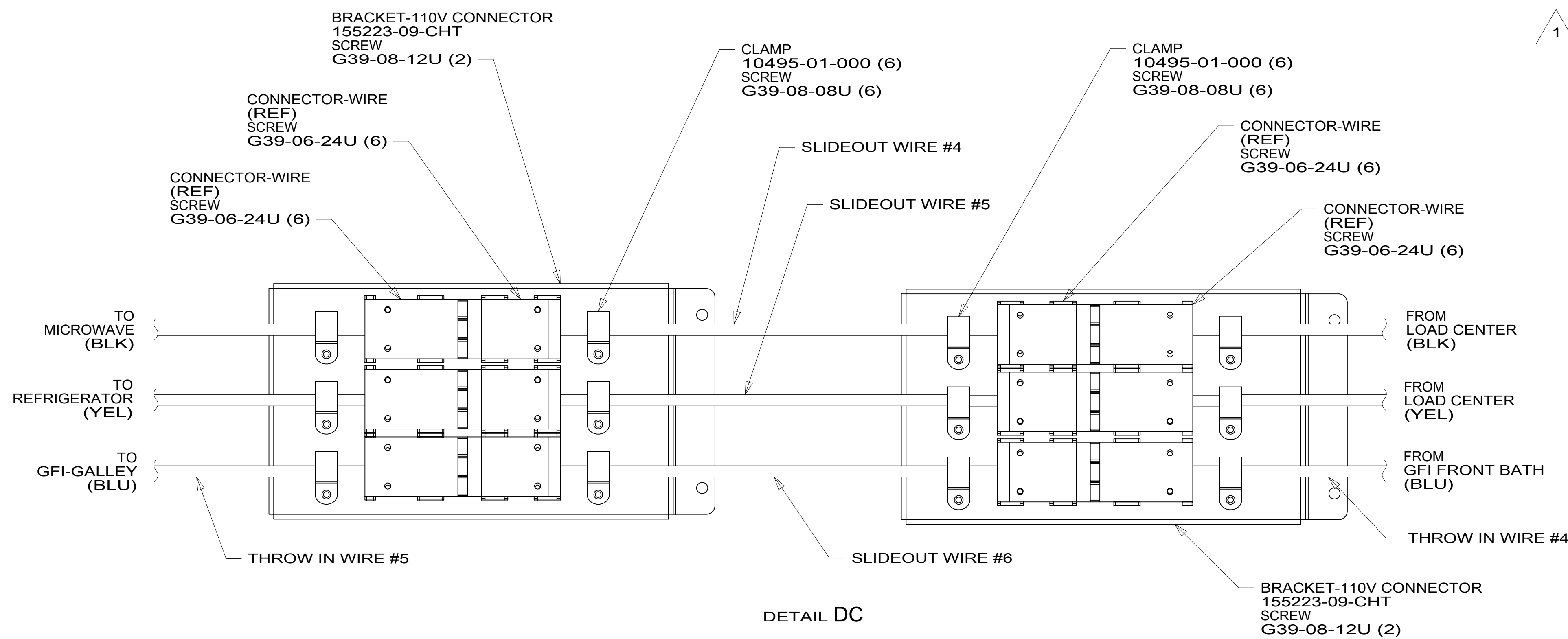
8 7 6 5 4 3 2 1 18-Oct-2018



DETAIL DB



DETAIL DA



DETAIL DC

- NOTES:
- 6 DO NOT USE POWER/AIR TOOL TO INSTALL NUT. TORQUE TO 10-12 FT LBS. DO NOT USE A HAMMER.
 - 5 CABLES PART OF WIRE ASM-COACH.
 - 4 SEE INVERTER/CHARGER OWNER'S MANUAL FOR ADDITIONAL INFORMATION.
 - 3 SEE WIRING INSTL-CHASSIS FOR ADDITIONAL INFORMATION.
 - 2 BRACKET IS LOCATED BY HOLES ON BRACKET.
 - 1 SEE LOAD CENTER/ATS ASM FOR ADDITIONAL INFORMATION.

FOR ELECTRICAL TORQUE SPECIFICATIONS SEE DWG NO. 128783-01-000

FOR ELECTRICAL CALLOUTS SEE DWG NO. 121339-01-000

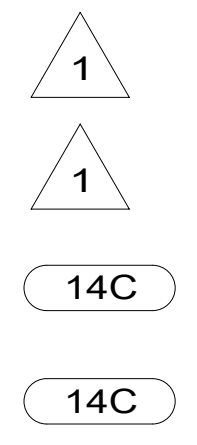
265 CODES/STANDARDS-CSA/CMVSS
1B1 CODES/STANDARDS USA

DESCRIPTION:	
WIRING INSTL-BODY, 110V	
SHEET:	ITEM/PART NO.:
4 OF 6	000166394 / 32972201000
REV	

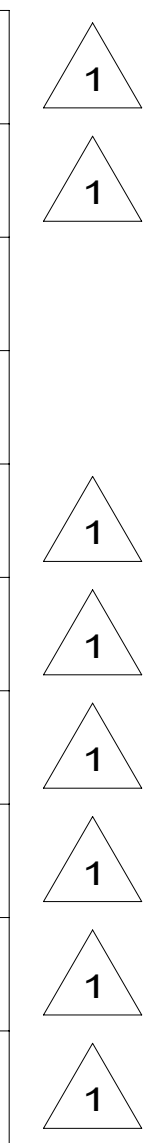
RED	1B1	136135-07-081
	265	136136-07-081
GRN	1B1	136135-08-081
	265	136136-08-081
YEL	1B1	136131-05-058
	265	136134-05-058
GLD	1B1	136131-10-083
	265	136134-10-083
GLD-2	1B1	136131-20-065
	265	136134-20-065
BLU	1B1	136131-02-113
	265	136134-02-113
BRN	1B1	136131-03-200
	265	136134-03-200
PUR	1B1	136131-04-090
	265	136134-04-090



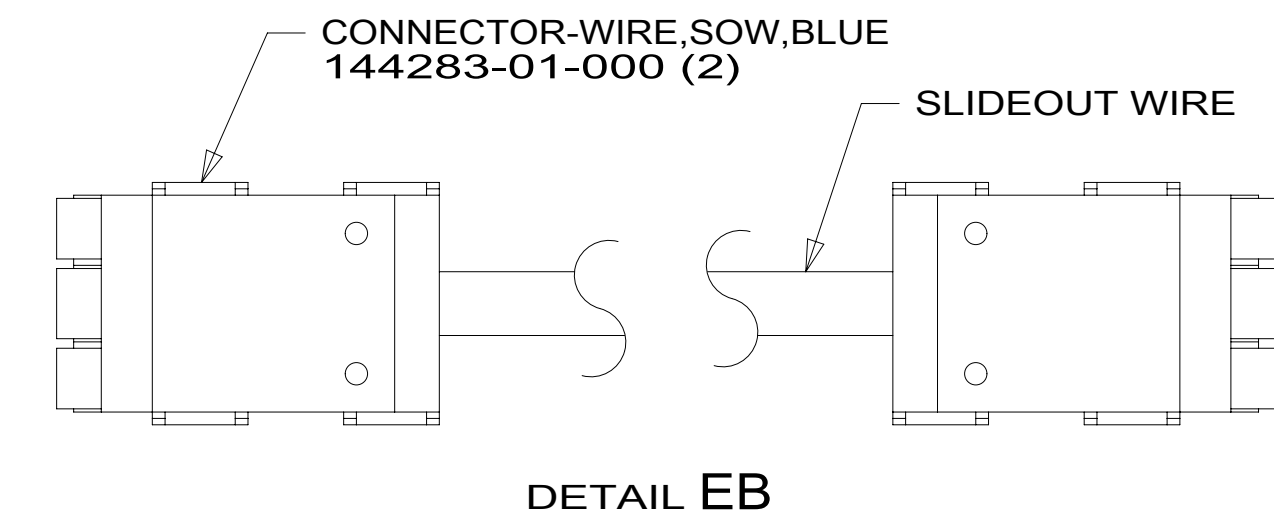
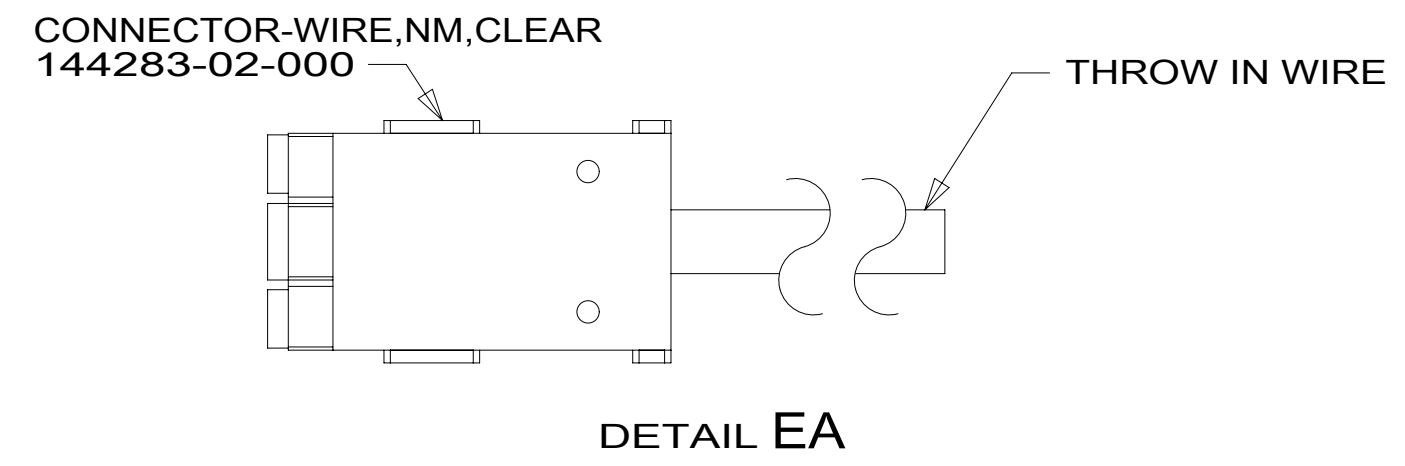
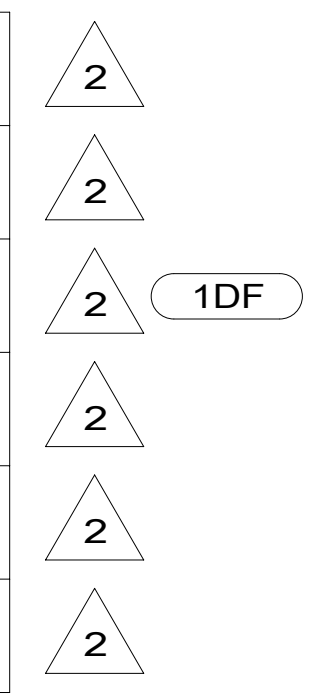
ORG	1B1	136131-16-028
	265	136134-16-028
BLK	1B1	136131-06-058
	265	136134-06-058
GRY	1B1	136131-15-065
	265	136134-15-065
INVERTER CHARGER MAIN	1B1	136137-01-040
	265	136138-01-040
INVERTER CHARGER SUB MAIN	1B1	136137-01-040
	265	136138-01-040
CABLE ASM-MAIN,6 AWG		176841-01-034
MAIN GROUND		136145-01-025
ATS GROUND		136145-01-020
INVERTER GROUND		136145-04-022
GENERATOR CABLE ASM		136148-02-109



THROW IN WIRE #1	1B1	136131-02-055
	265	136134-02-055
THROW IN WIRE #2	1B1	136131-04-090
	265	136134-04-090
THROW IN WIRE #3	1B1	136131-02-003
	265	136134-02-003
THROW IN WIRE #4	1B1	136131-02-075
	265	136134-02-075
THROW IN WIRE #5	1B1	136131-02-056
	265	136134-02-056



SLIDEOUT WIRE #1	136151-02-014
SLIDEOUT WIRE #2	136151-03-028
SLIDEOUT WIRE #3	136151-02-028
SLIDEOUT WIRE #4	136151-06-022
SLIDEOUT WIRE #5	136151-05-022
SLIDEOUT WIRE #6	136151-02-022



- 1DF EXT TV ENTERTAINMENT CENTER
- 14C FIREPLACE-ELECTRIC
- 265 CODES/STANDARDS-CSA/CMVSS
- 1B1 CODES/STANDARDS USA

NOTES:

2 SEE DETAIL EB FOR CONNECTOR INSTALLATION.

1 SEE DETAIL EA FOR CONNECTOR INSTALLATION.

FOR ELECTRICAL TORQUE SPECIFICATIONS SEE DWG NO. 128783-01-000

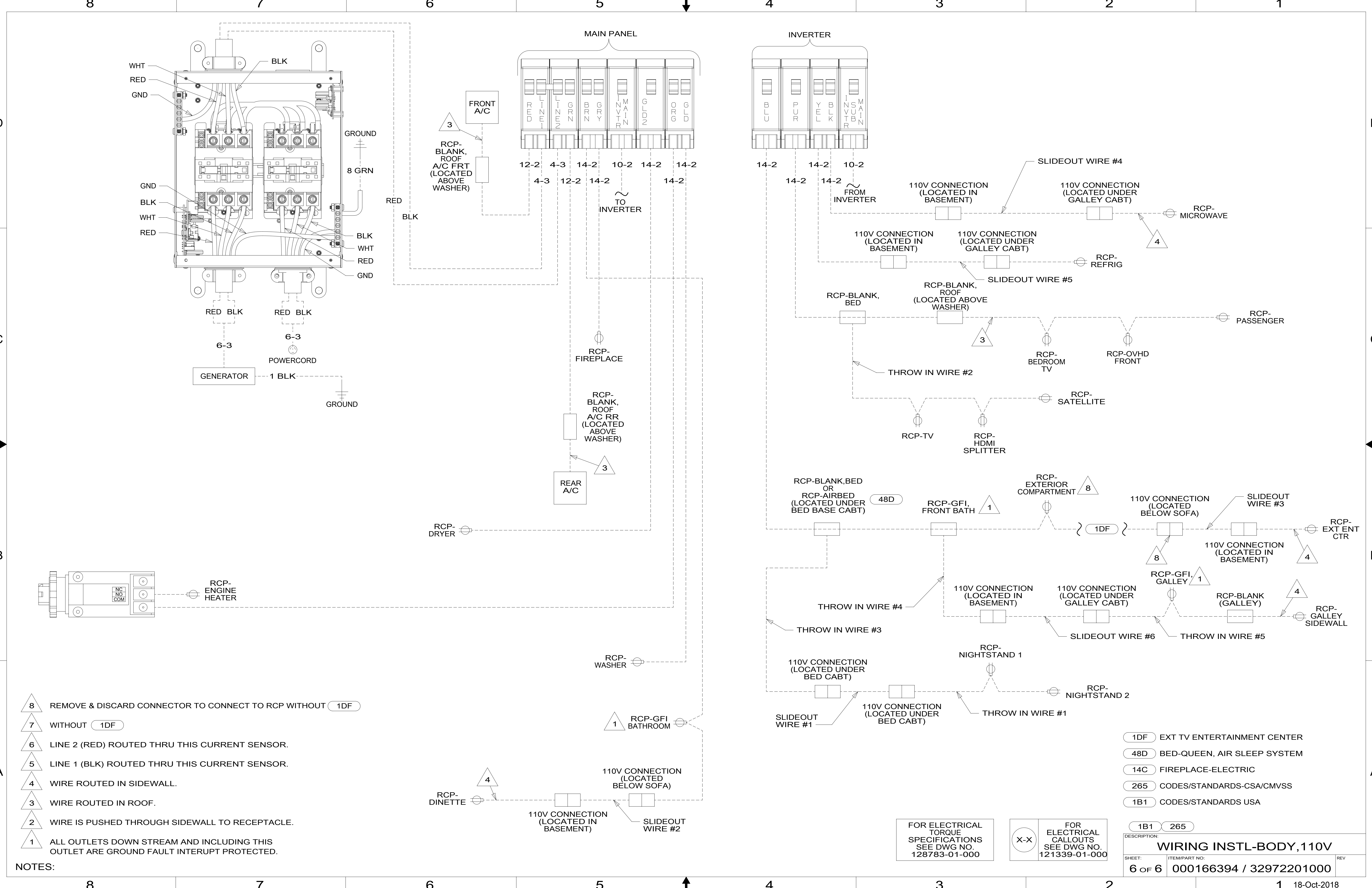
FOR ELECTRICAL CALLOUTS SEE DWG NO. 121339-01-000

DESCRIPTION: 1B1 265

WIRING INSTL-BODY, 110V

SHEET: 5 OF 6 ITEM/PART NO: 000166394 / 32972201000 REV

18-Oct-2018



- NOTES:**
- 8 REMOVE & DISCARD CONNECTOR TO CONNECT TO RCP WITHOUT 1DF
 - 7 WITHOUT 1DF
 - 6 LINE 2 (RED) ROUTED THRU THIS CURRENT SENSOR.
 - 5 LINE 1 (BLK) ROUTED THRU THIS CURRENT SENSOR.
 - 4 WIRE ROUTED IN SIDEWALL.
 - 3 WIRE ROUTED IN ROOF.
 - 2 WIRE IS PUSHED THROUGH SIDEWALL TO RECEPTACLE.
 - 1 ALL OUTLETS DOWN STREAM AND INCLUDING THIS OUTLET ARE GROUND FAULT INTERRUPT PROTECTED.

- 1DF EXT TV ENTERTAINMENT CENTER
- 48D BED-QUEEN, AIR SLEEP SYSTEM
- 14C FIREPLACE-ELECTRIC
- 265 CODES/STANDARDS-CSA/CMVSS
- 1B1 CODES/STANDARDS USA

FOR ELECTRICAL TORQUE SPECIFICATIONS SEE DWG NO. 128783-01-000

FOR ELECTRICAL CALLOUTS SEE DWG NO. 121339-01-000

DESCRIPTION:		WIRING INSTL-BODY, 110V	
SHEET:	ITEM/PART NO.:	REV:	
6 OF 6	000166394 / 32972201000		