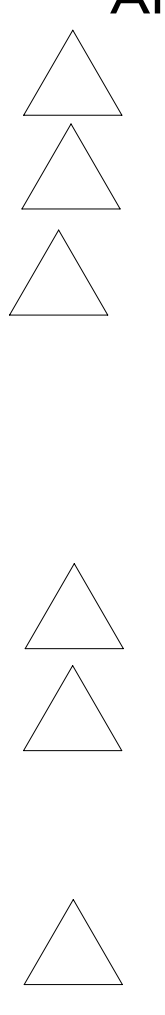


13. WHEN INSTALLING TOILET, SCRAP THE SUPPLIED LAGGING BOLTS FOR PLASTIC BRACKET TO FLOOR ONLY. USE SCREW 000G11-08-06U (2) TO LOCATE AND FASTEN STEEL BRACKET TO FLOOR. THEN FASTEN DOWN PLASTIC BRACKETS TO FLOOR USING SCREW 000G42-04-24U (2) AND SUPPLIED PLASTIC ANCHORS. PLACE TOILET OVER THE BRACKETS AND FASTEN USING SUPPLIED HARDWARE AND THEN USE WHITE CAPS TO COVER SCREWS.



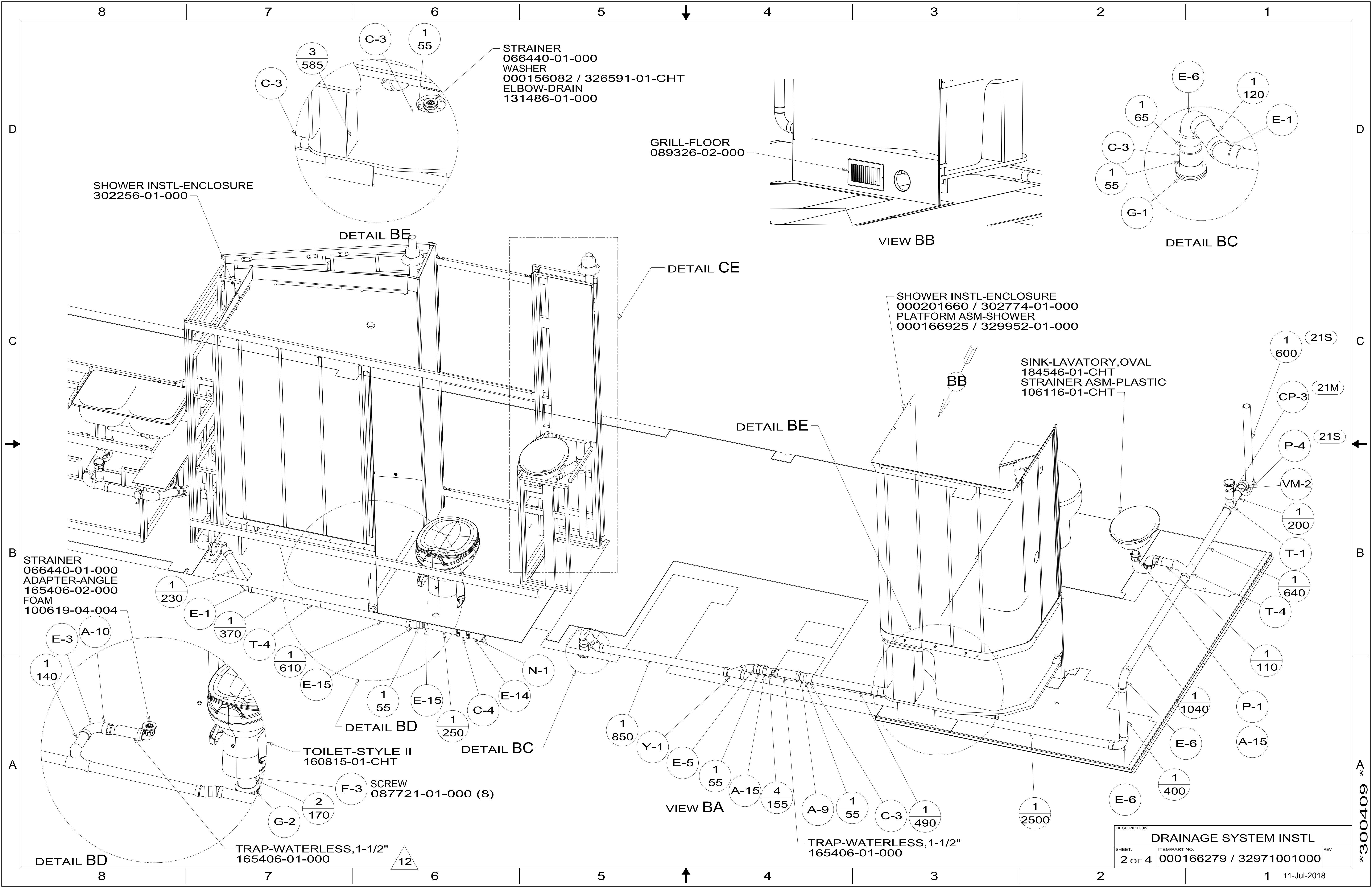
- 21S WASHER & DRYER-PAIR
- 21M WASHER/DRYER PREP



DSNR:		ALL DIMENSIONS ARE IN MILLIMETERS	
DFTR:		MATERIAL:	
UNSPECIFIED TOLERANCES:			
WHOLE DIM (X)	: 3		
ONE-PLACE (X.X)	: 1.5		
TWO-PLACE (X.XX)	: 0.50		
ANGLE	: 1°		
REFER TO ES0018 FOR FASTENER TIGHTENING GUIDELINES		WEIGHT: (LBS)	FIRST USED: (REF)
			19 L38W
DESCRIPTION: DRAINAGE SYSTEM INSTL			
SHEET:	ITEM/PART NO.:	REV	
1 OF 4	000166279 / 32971001000		

FOR DRAINAGE CALLOUTS SEE DWG NO. 000211962 / 303370-01-000

NOTES:



STRAINER
066440-01-000
WASHER
000156082 / 326591-01-CHT
ELBOW-DRAIN
131486-01-000

SHOWER INSTL-ENCLOSURE
302256-01-000

GRILL-FLOOR
089326-02-000

VIEW BB

DETAIL BC

DETAIL BE

DETAIL CE

SHOWER INSTL-ENCLOSURE
000201660 / 302774-01-000
PLATFORM ASM-SHOWER
000166925 / 329952-01-000

SINK-LAVATORY, OVAL
184546-01-CHT
STRAINER ASM-PLASTIC
106116-01-CHT

STRAINER
066440-01-000
ADAPTER-ANGLE
165406-02-000
FOAM
100619-04-004

TOILET-STYLE II
160815-01-CHT

SCREW
087721-01-000 (8)

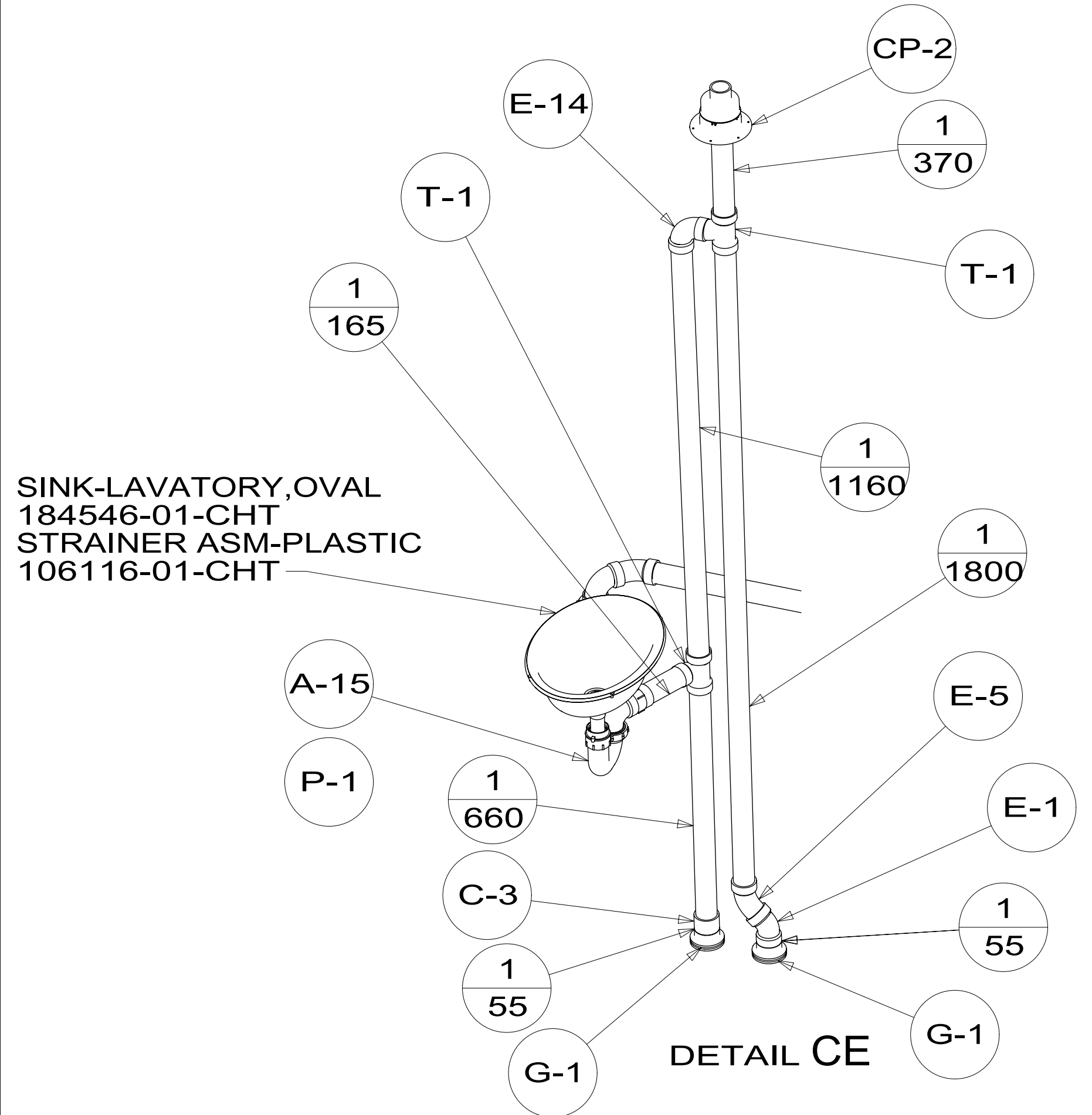
TRAP-WATERLESS, 1-1/2"
165406-01-000

TRAP-WATERLESS, 1-1/2"
165406-01-000

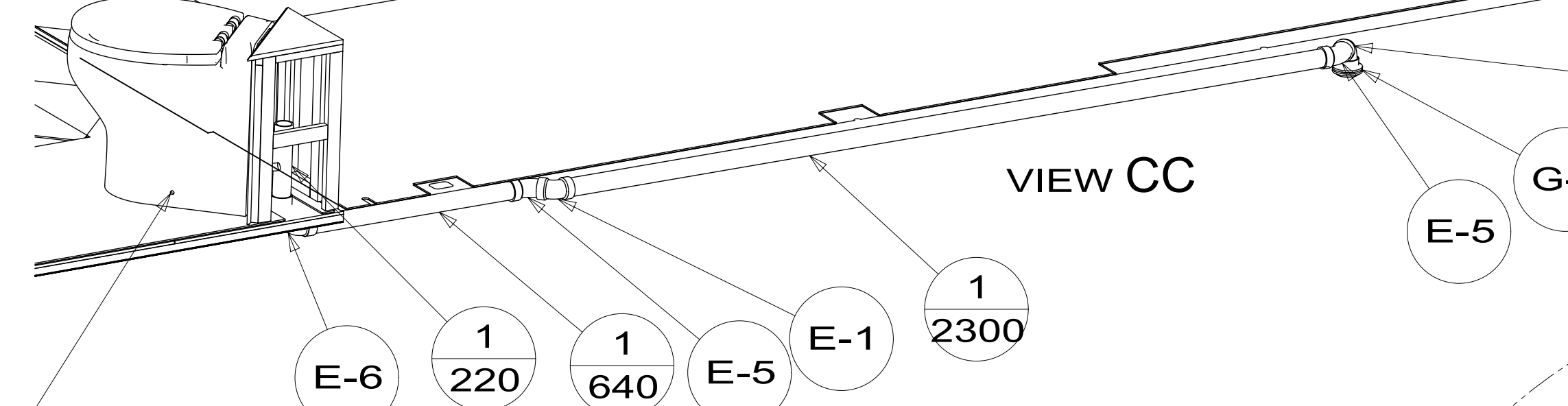
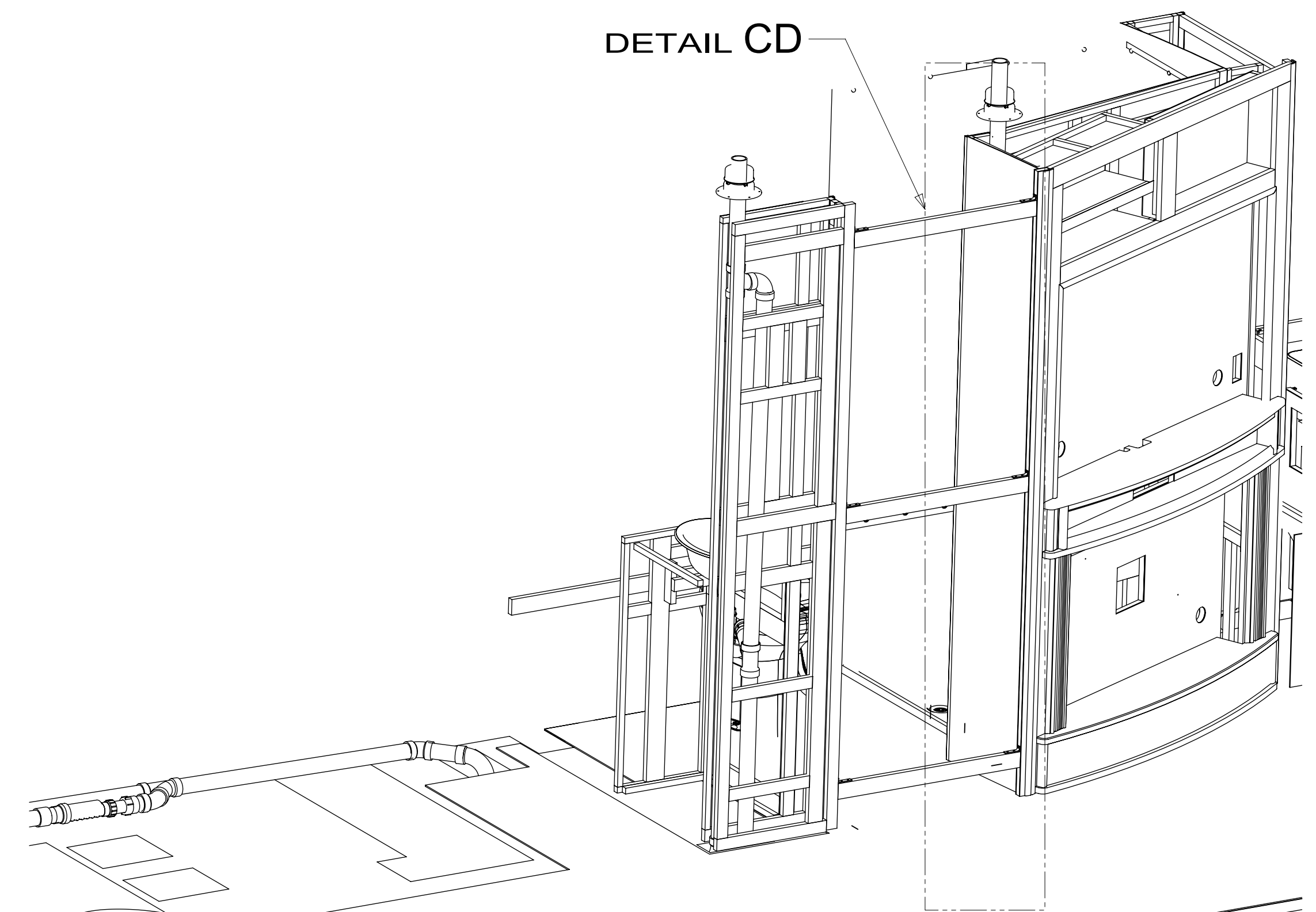
DESCRIPTION: DRAINAGE SYSTEM INSTL		
SHEET: 2 OF 4	ITEM/PART NO: 000166279 / 32971001000	REV
		11-Jul-2018

*300409

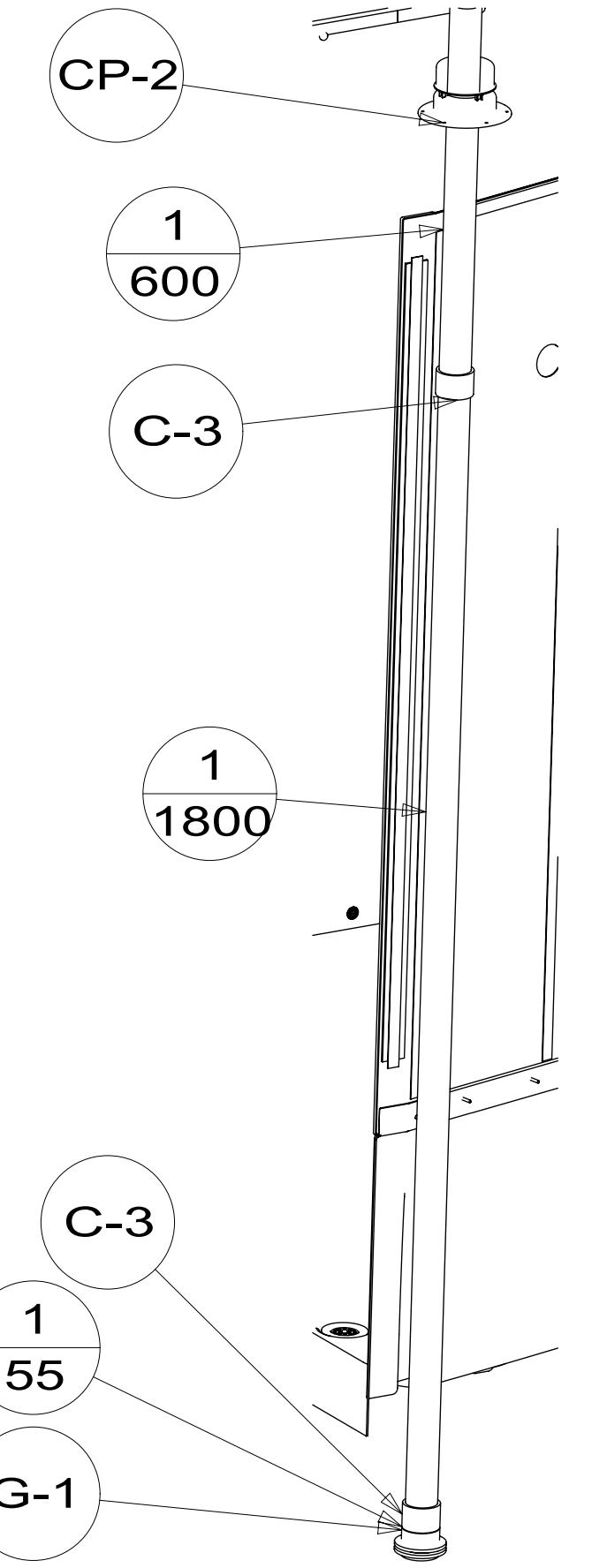
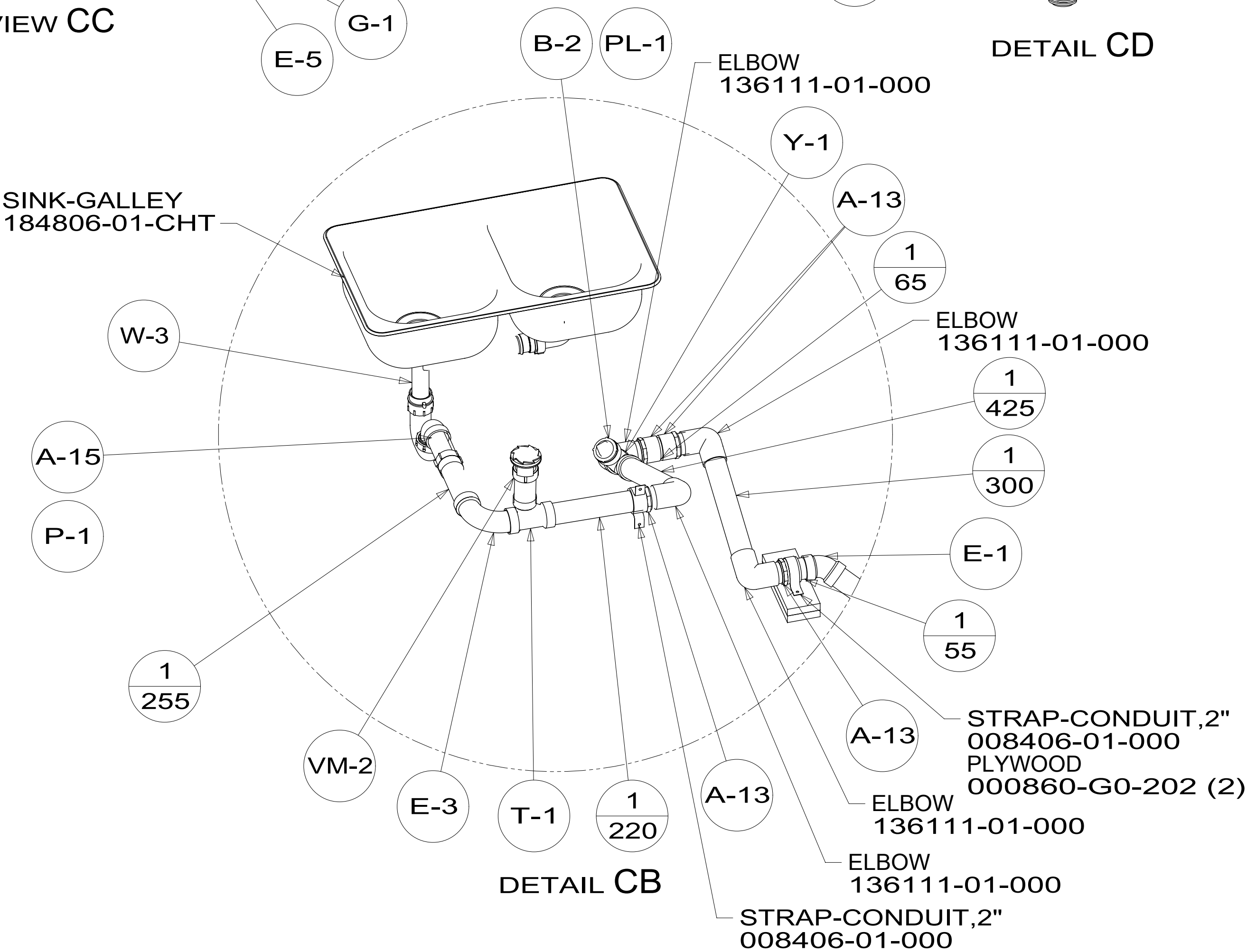
SINK-LAVATORY, OVAL
184546-01-CHT
STRAINER ASM-PLASTIC
106116-01-CHT



13 TOILET KIT-TECMA, MACERATOR
000157148 / 326919-01-CHT
BRACKET-TOILET
000157535 / 327029-01-CHT



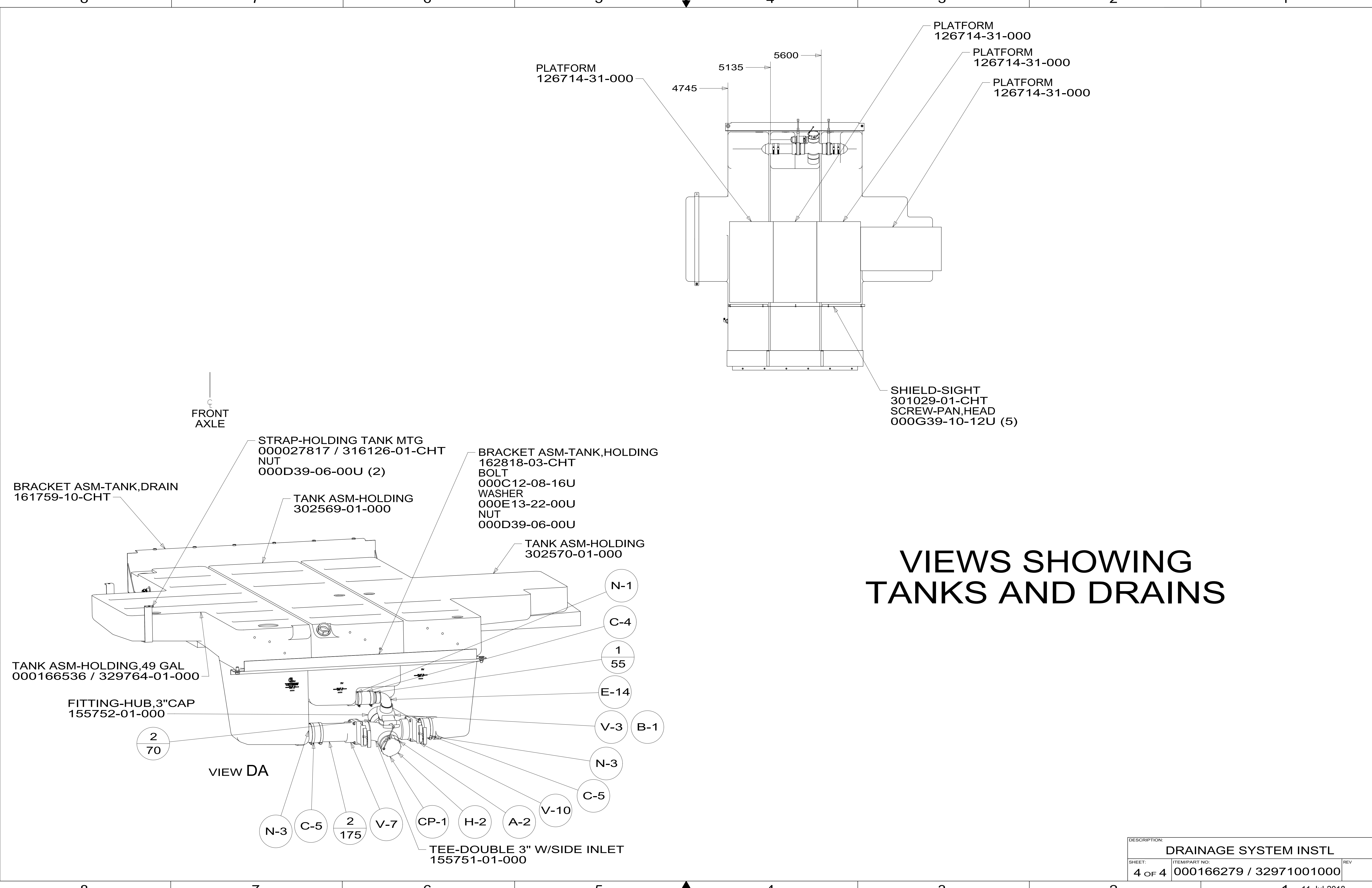
SINK-GALLEY
184806-01-CHT



DESCRIPTION:		
DRAINAGE SYSTEM INSTL		
SHEET:	ITEM/PART NO.:	REV
3 OF 4	000166279 / 32971001000	

300409 A

VIEWS SHOWING TANKS AND DRAINS



PLATFORM
126714-31-000

PLATFORM
126714-31-000

PLATFORM
126714-31-000

PLATFORM
126714-31-000

SHIELD-SIGHT
301029-01-CHT
SCREW-PAN, HEAD
000G39-10-12U (5)

FRONT
AXLE

STRAP-HOLDING TANK MTG
00027817 / 316126-01-CHT
NUT
000D39-06-00U (2)

BRACKET ASM-TANK, HOLDING
162818-03-CHT
BOLT
000C12-08-16U
WASHER
000E13-22-00U
NUT
000D39-06-00U

BRACKET ASM-TANK, DRAIN
161759-10-CHT

TANK ASM-HOLDING
302569-01-000

TANK ASM-HOLDING
302570-01-000

TANK ASM-HOLDING, 49 GAL
000166536 / 329764-01-000

FITTING-HUB, 3" CAP
155752-01-000

2
70

VIEW DA

N-3

C-5

2
175

V-7

CP-1

H-2

A-2

V-10

C-5

N-3

V-3

B-1

E-14

55

1

C-4

N-1

TEE-DOUBLE 3" W/SIDE INLET
155751-01-000

DESCRIPTION:		
DRAINAGE SYSTEM INSTL		
SHEET:	ITEM/PART NO:	REV
4 OF 4	000166279 / 32971001000	

*300409 *