

8 7 6 5 4 3 2 1

D

D

C

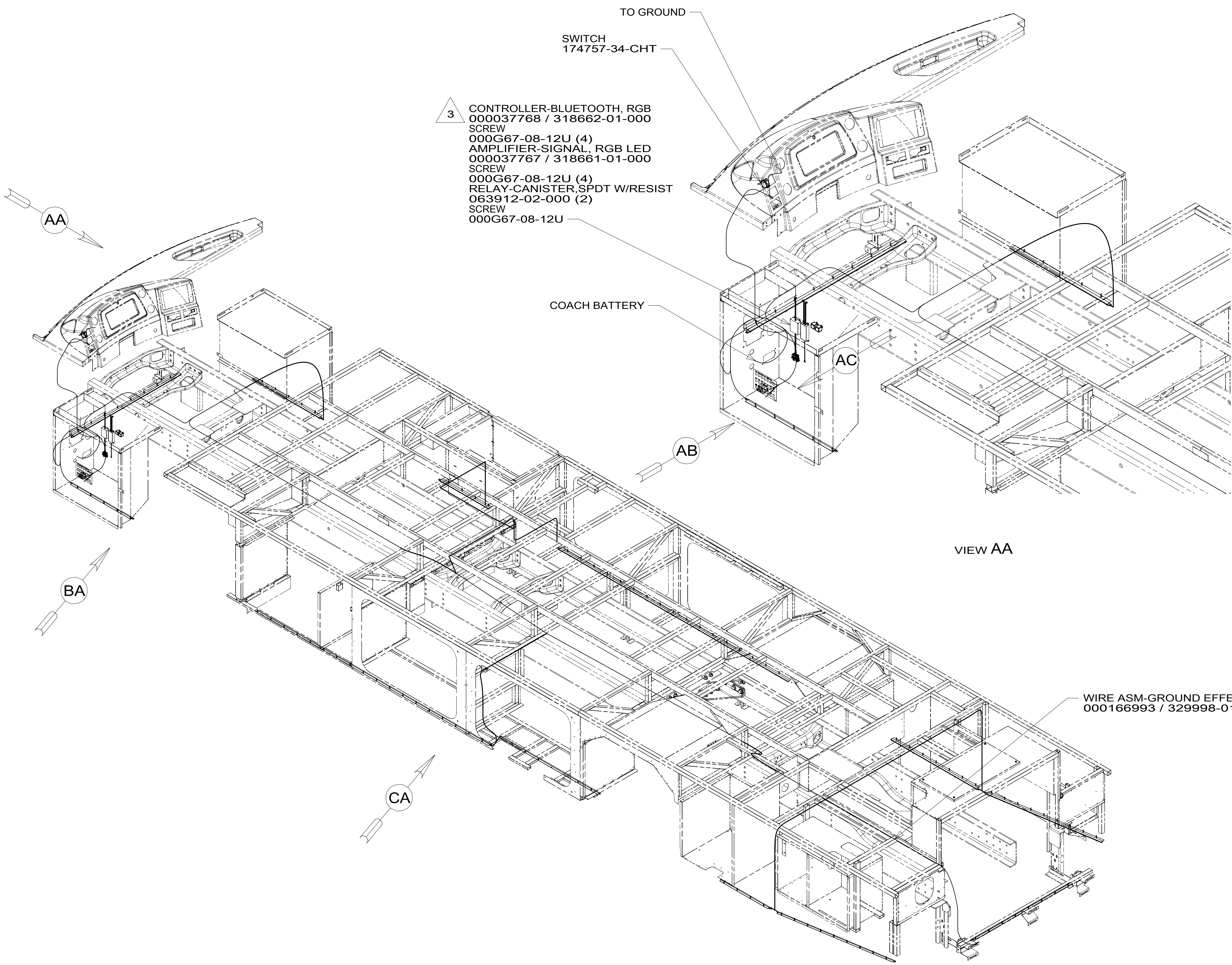
C

B

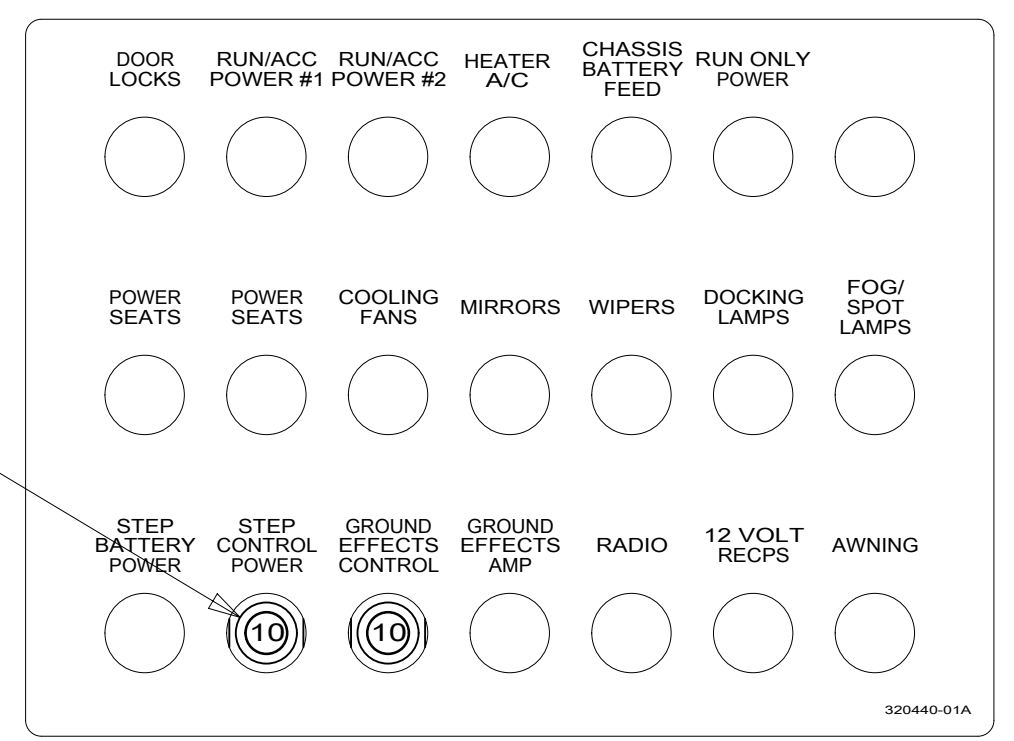
B

A

A



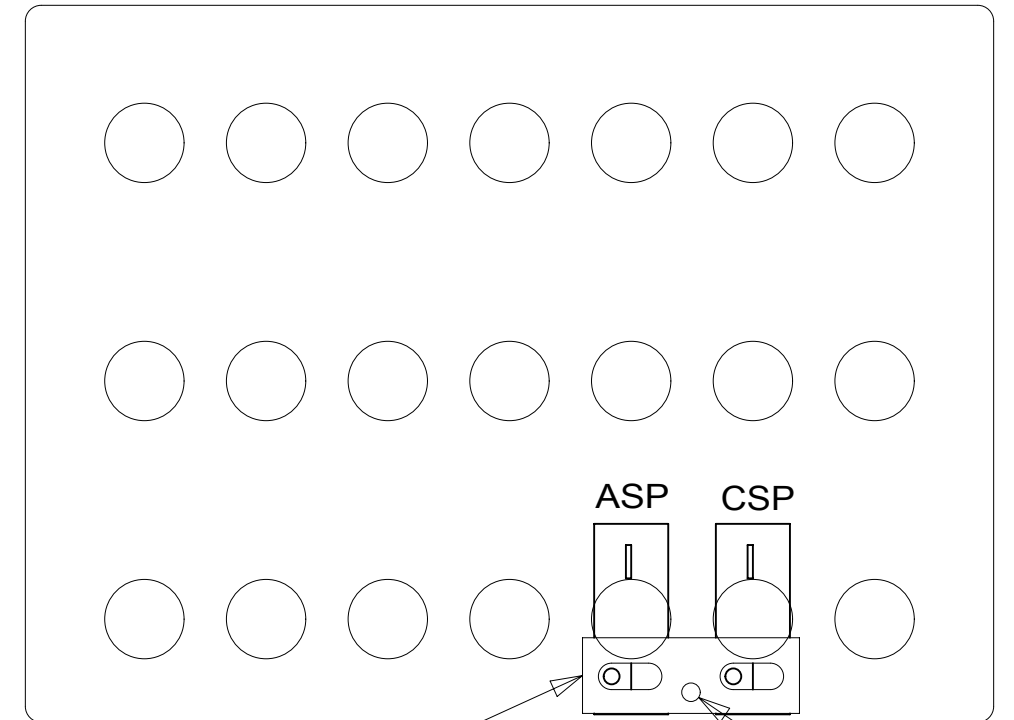
- 3 CONTROLLER-BLUE TOOTH, RGB
000037768 / 318662-01-000
- SCREW
000G67-08-12U (4)
- AMPLIFIER-SIGNAL, RGB LED
000037767 / 318661-01-000
- SCREW
000G67-08-12U (4)
- RELAY-CANISTER, SPDT W/RESIST
063912-02-000 (2)
- SCREW
000G67-08-12U



CIRCUIT BREAKER-10 AMP
093654-05-000 (2)

VIEW AA

VIEW AB



BUSS BAR CIRCUIT BREAKER
141744-01-000

VIEW AC

COACH FEED

- NOTES:
- 3 PLUG AMP INPUT INTO ZONE 2 OUTPUT FROM CONTROLLER.
 - 2. CLAMP WIRE ASM-GROUND EFFECT LIGHTING ALONG WITH WIRE ASM-CHASSIS WHERE APPLICABLE. USE TIE-WIRE 8343-04-000 TO SECURE WIRES TO FLOOR SUPPORT FRAME AT LEAST ONCE EVERY 600MM ALL OTHER PLACES.
 - 1 REST WIRE IN FRAME RAIL WHEN APPLICABLE.

FOR ELECTRICAL TORQUE SPECIFICATIONS SEE DWG NO. 128783-01-000

FOR ELECTRICAL CALLOUTS SEE DWG NO. 121339-01-000

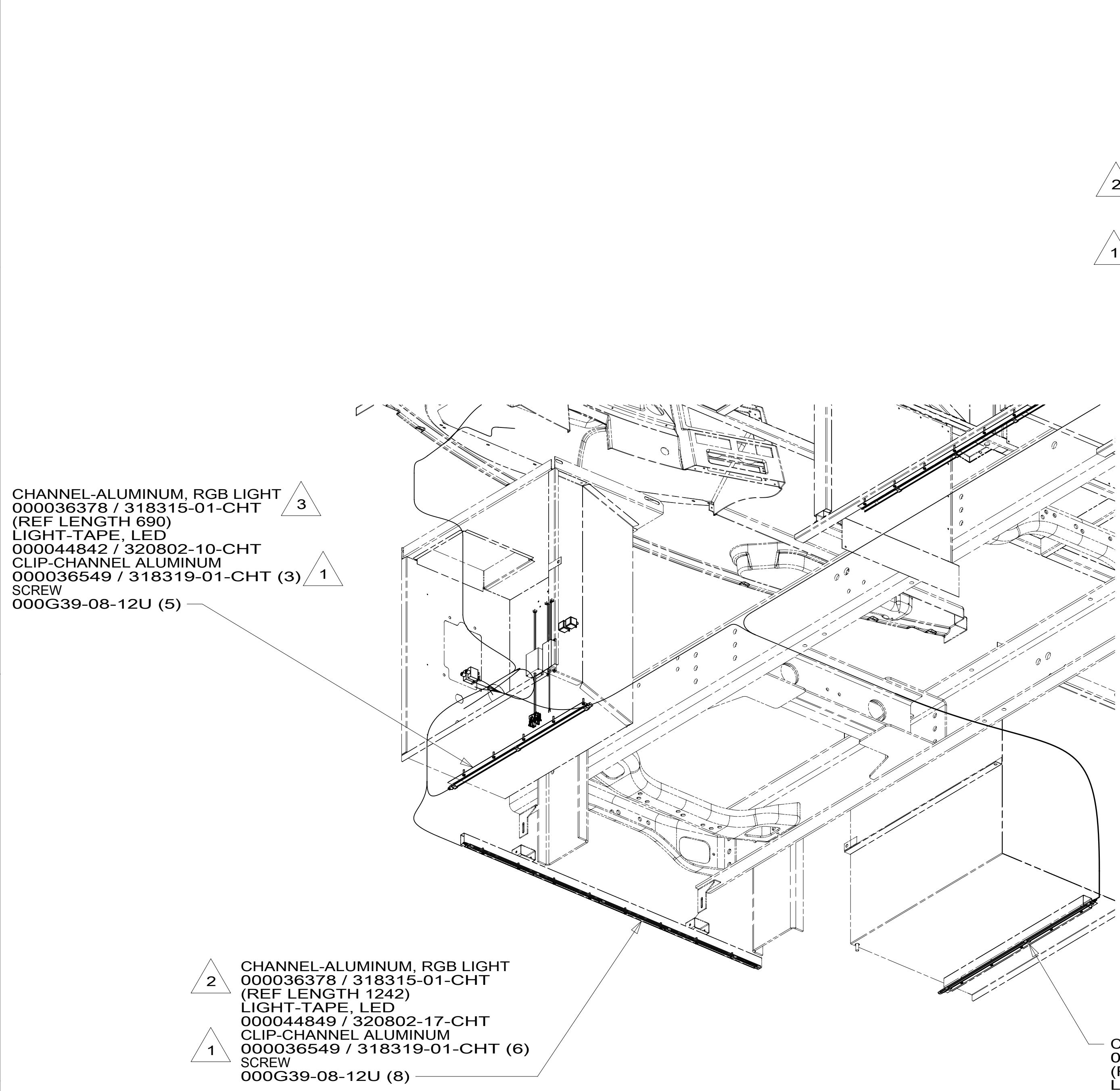
265 CODES/STANDARDS-CSA/CMVSS
1B1 CODES/STANDARDS USA

1B1 265



| | | | |
|---|-------------------------|-----------------------------------|-------------|
| DSNR: | | ALL DIMENSIONS ARE IN MILLIMETERS | |
| DIFFR: | | MATERIAL: | |
| UNSPECIFIED TOLERANCES: | | | |
| WHOLE DIM (X) | : 3 | | |
| ONE-PLACE (X.X) | : 1.5 | | |
| TWO-PLACE (X.XX) | : 0.50 | | |
| ANGLE | : 1° | | |
| REFER TO ES0018 FOR FASTENER TIGHTENING GUIDELINES | | WEIGHT: (LBS) | FIRST USED: |
| | | | 19 L34T |
| DESCRIPTION: WIRING INSTL-LIGHTING,GROUND EFFECTS | | | |
| SHEET: | ITEM/PART NO.: | REV | |
| 1 OF 3 | 000166167 / 32966001000 | | |

8 7 6 5 4 3 2 1 REF: 1 05-Aug-2019



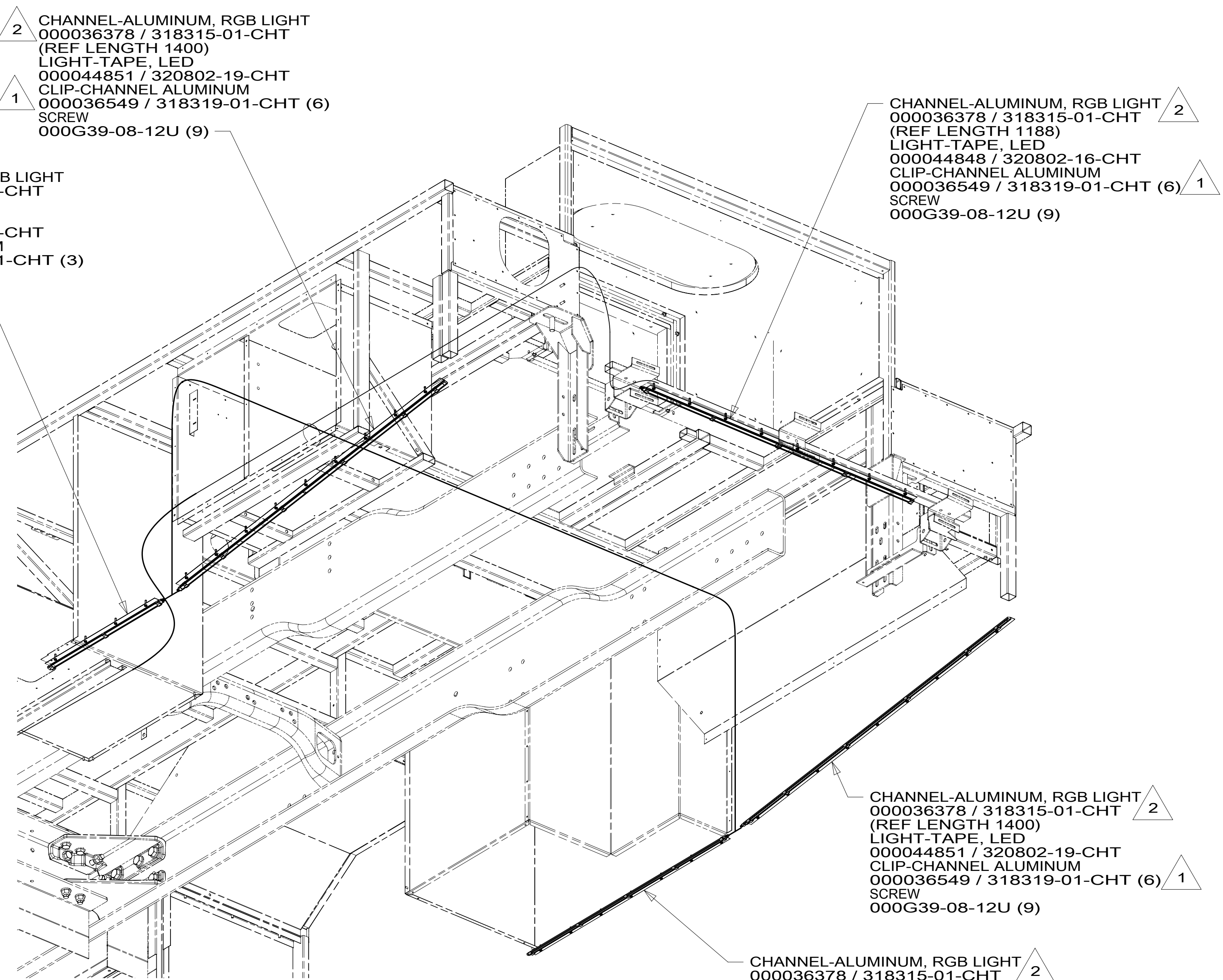
3 CHANNEL-ALUMINUM, RGB LIGHT
000036378 / 318315-01-CHT
(REF LENGTH 690)
LIGHT-TAPE, LED
000044842 / 320802-10-CHT
CLIP-CHANNEL ALUMINUM
000036549 / 318319-01-CHT (3) 1
SCREW
000G39-08-12U (5)

2 CHANNEL-ALUMINUM, RGB LIGHT
000036378 / 318315-01-CHT
(REF LENGTH 1242)
LIGHT-TAPE, LED
000044849 / 320802-17-CHT
CLIP-CHANNEL ALUMINUM
000036549 / 318319-01-CHT (6) 1
SCREW
000G39-08-12U (8)

VIEW BA

2 CHANNEL-ALUMINUM, RGB LIGHT
000036378 / 318315-01-CHT
(REF LENGTH 554)
LIGHT-TAPE, LED
000044840 / 320802-08-CHT
CLIP-CHANNEL ALUMINUM
000036549 / 318319-01-CHT (3) 1
SCREW
000G39-08-12U (4)

2 CHANNEL-ALUMINUM, RGB LIGHT
000036378 / 318315-01-CHT
(REF LENGTH 1400)
LIGHT-TAPE, LED
000044851 / 320802-19-CHT
CLIP-CHANNEL ALUMINUM
000036549 / 318319-01-CHT (6) 1
SCREW
000G39-08-12U (9)



2 CHANNEL-ALUMINUM, RGB LIGHT
000036378 / 318315-01-CHT
(REF LENGTH 1188)
LIGHT-TAPE, LED
000044848 / 320802-16-CHT
CLIP-CHANNEL ALUMINUM
000036549 / 318319-01-CHT (6) 1
SCREW
000G39-08-12U (9)

2 CHANNEL-ALUMINUM, RGB LIGHT
000036378 / 318315-01-CHT
(REF LENGTH 1400)
LIGHT-TAPE, LED
000044851 / 320802-19-CHT
CLIP-CHANNEL ALUMINUM
000036549 / 318319-01-CHT (6) 1
SCREW
000G39-08-12U (9)

VIEW BB

3 CHANNEL-ALUMINUM, RGB LIGHT
000036378 / 318315-01-CHT
(REF LENGTH 765)
LIGHT-TAPE, LED
000044843 / 320802-11-CHT
CLIP-CHANNEL ALUMINUM
000036549 / 318319-01-CHT (3) 1
SCREW
000G39-08-12U (5)

2 CHANNEL-ALUMINUM, RGB LIGHT
000036378 / 318315-01-CHT
(REF LENGTH 987)
LIGHT-TAPE, LED
000044846 / 320802-14-CHT
CLIP-CHANNEL ALUMINUM
000036549 / 318319-01-CHT (5) 1
SCREW
000G39-08-12U (7)

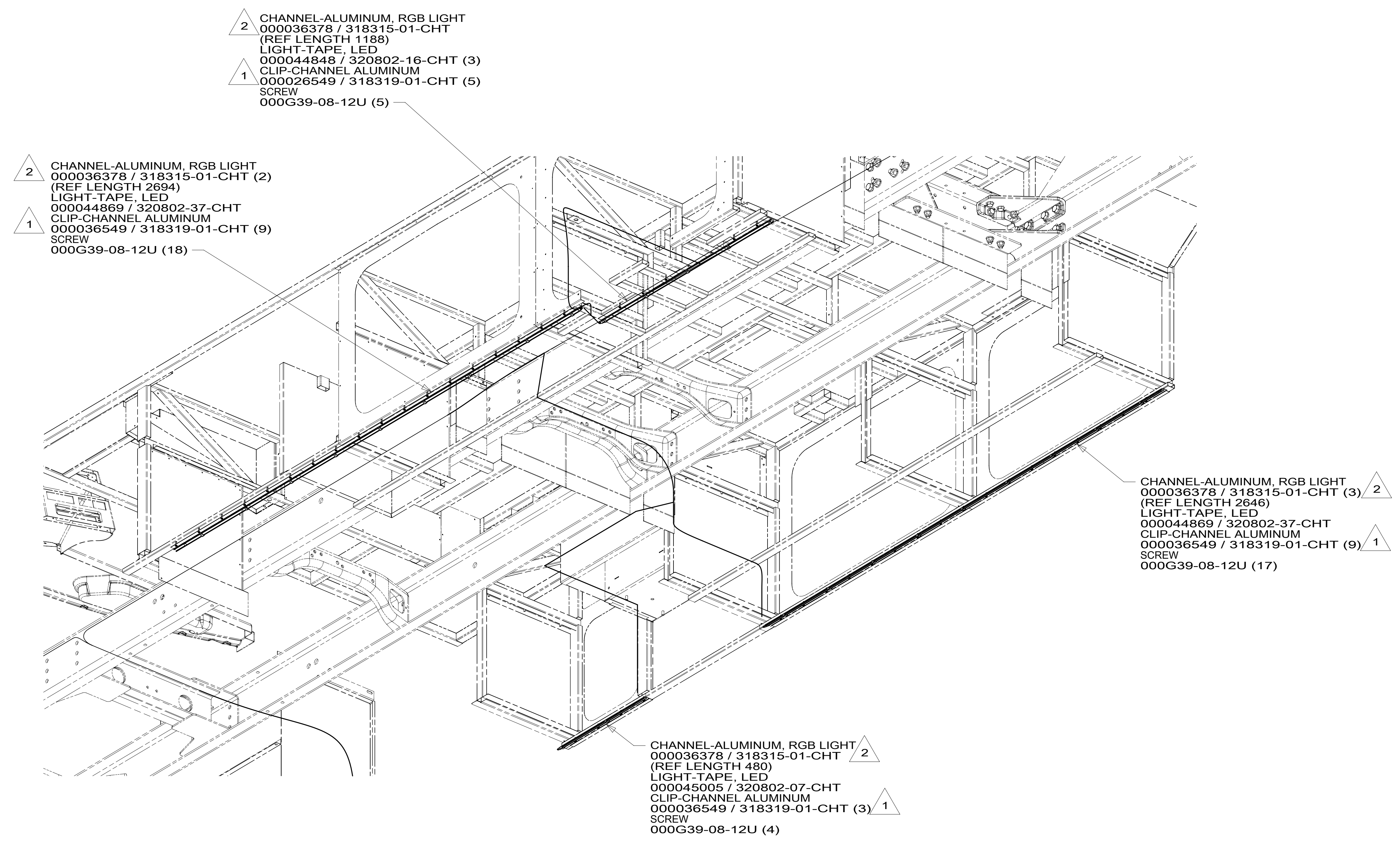
- NOTES:
- 4. CUT MOUNTING CHANNELS TO LEAVE 3-7MM GAPS AT BOTH ENDS.
 - 3. ALIGN WITH REAR FACE OF MOUNTING SURFACE.
 - 2. CENTER ALUMINUM CHANNEL(S) ON MOUNTING SURFACE.
 - 1. CLIPS TO BE EQUALLY SPACED ALONG LED STRIP. CENTER CLIPS BETWEEN INDIVIDUAL LEDS.

265 CODES/STANDARDS-CSA/CMVSS
1B1 CODES/STANDARDS USA

FOR ELECTRICAL TORQUE SPECIFICATIONS SEE DWG NO. 128783-01-000

FOR ELECTRICAL CALLOUTS SEE DWG NO. 121339-01-000

| | | |
|--------------------------------------|-------------------------|-----|
| DESCRIPTION: | 1B1 265 | |
| WIRING INSTL-LIGHTING,GROUND EFFECTS | | |
| SHEET: | ITEM/PART NO: | REV |
| 2 OF 3 | 000166167 / 32966001000 | |



VIEW CA

- NOTES:
- 3. CUT MOUNTING CHANNELS TO LEAVE 3-7MM GAPS AT ENDS.
 - 2 CENTER ALUMINUM CHANNELS ON MOUNTING SURFACE.
 - 1 CLIPS TO BE EQUALLY SPACED ALONG LED STRIP. CENTER CLIPS BETWEEN INDIVIDUAL LEDs.

265 CODES/STANDARDS-CSA/CMVSS
 1B1 CODES/STANDARDS USA

FOR ELECTRICAL TORQUE SPECIFICATIONS SEE DWG NO. 128783-01-000

FOR ELECTRICAL CALLOUTS SEE DWG NO. 121339-01-000

| | |
|---|--|
| DESCRIPTION: WIRING INSTL-LIGHTING,GROUND EFFECTS | |
| SHEET: 3 OF 3 | ITEM/PART NO.: 000166167 / 32966001000 |
| REV 1 05-Aug-2019 | |