

- 9. SEE DRAWING 061607 FOR INSTALLATION OF GROMMETS.
- 8. SECURE DRAINAGE PIPES TO CABINET USING WIRE TIE 108046-02-000, AND SCREW 000G67-10-12U AT INTERVALS OF NOT OF NOT MORE THAN 4 FEET APART.
- 7. SECURE VENT PIPE TO GROMMET WITH CLAMP 000156237 / 326663-02-000.
- 6. VENT PIPE MUST PROJECT 51 MIN AND 64 MAX ABOVE ROOF FOR PROPER FIT AND FUNCTION. ADD S-1 (000156099 / 326607-01-CHT SEAL-VENT PIPE) AROUND PIPE ON ROOF BEFORE VENT CAP IS INSTALLED.
- 5. SEAL AROUND SHOWER WITH SILICONE.
- 4. USE SMOOTH PLUMBERS PUTTY 167459-01-000 TO SEAL STRAINER (0.2 PER STRAINER).
- 3. ALL PIPE AND FITTINGS TO BE ASSEMBLED WITH SOLVENT 004020-01-000 (USA), 004020-02-000 (CAN)
- 2. SLOPE OF TRAP ARM MUST BE 6 PER 305 mm.
- 1. SLOPE OF HORIZONTAL PIPING TO BE MINIMUM OF 3 PER 305 mm.

NOTES:

- 21M WASHER/DRYER PREP
- 21S WASHER & DRYER-PAIR

WINNEBAGO
COPYRIGHT 2018 WINNEBAGO INDUSTRIES, INC.

UNSPECIFIED TOLERANCES:		MATERIAL:
WHOLE DIM (X)	3	
ONE-PLACE (X.X)	1.5	
TWO-PLACE (X.XX)	0.50	
ANGLE	1°	

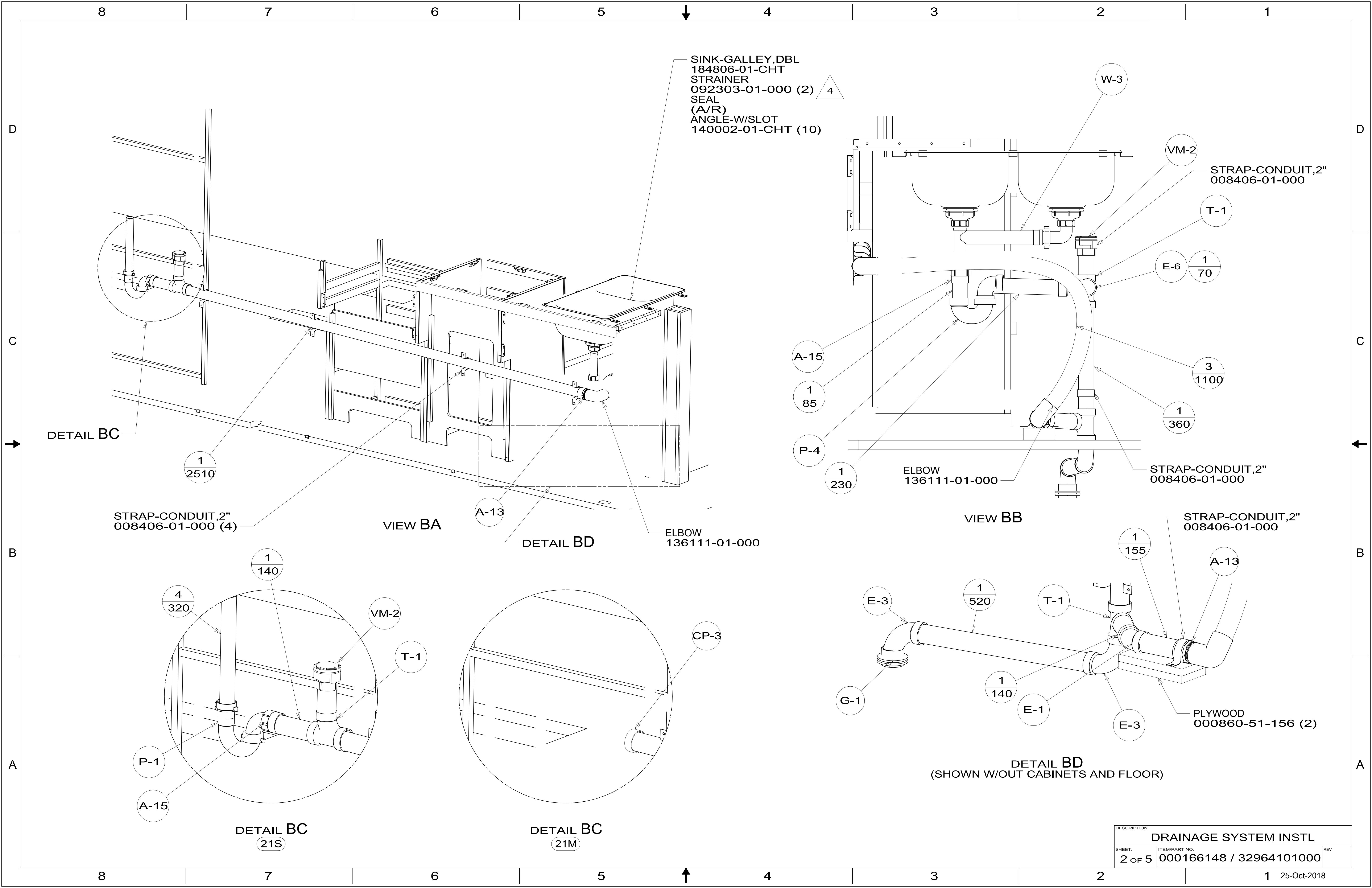
REFER TO ES0018 FOR FASTENER TIGHTENING GUIDELINES

WEIGHT: (LBS) FIRST USED: (REF)
19 L34T

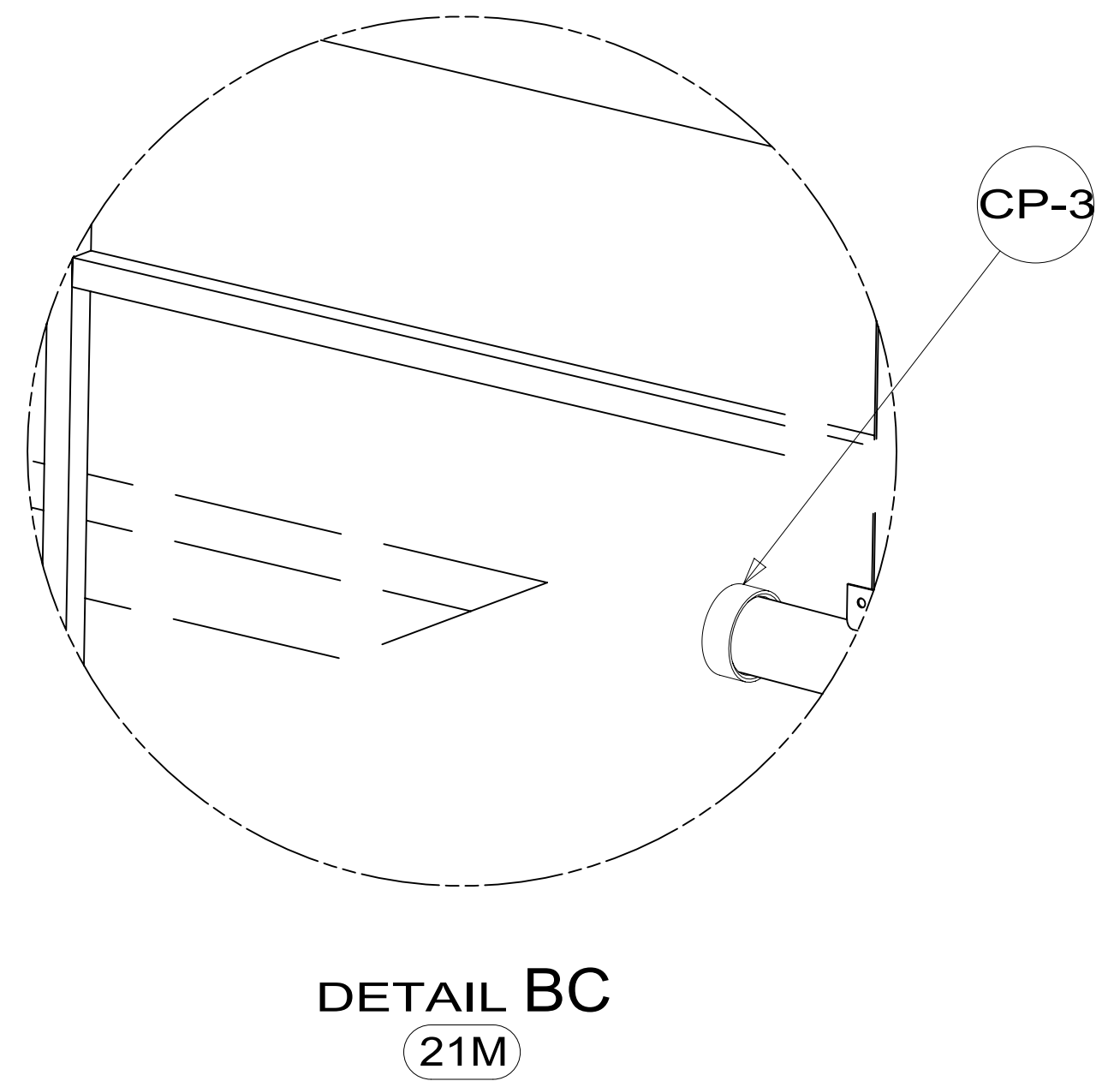
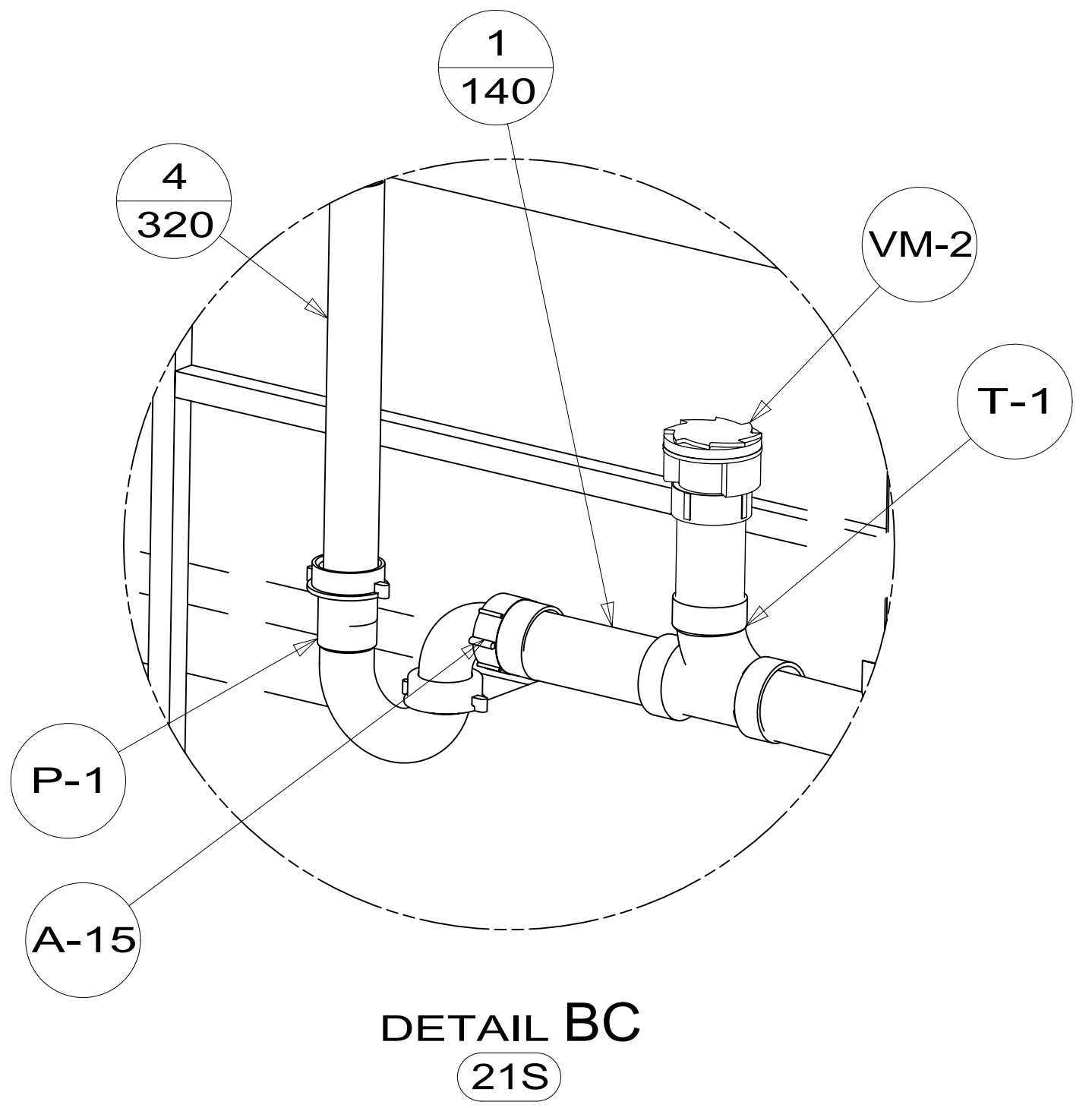
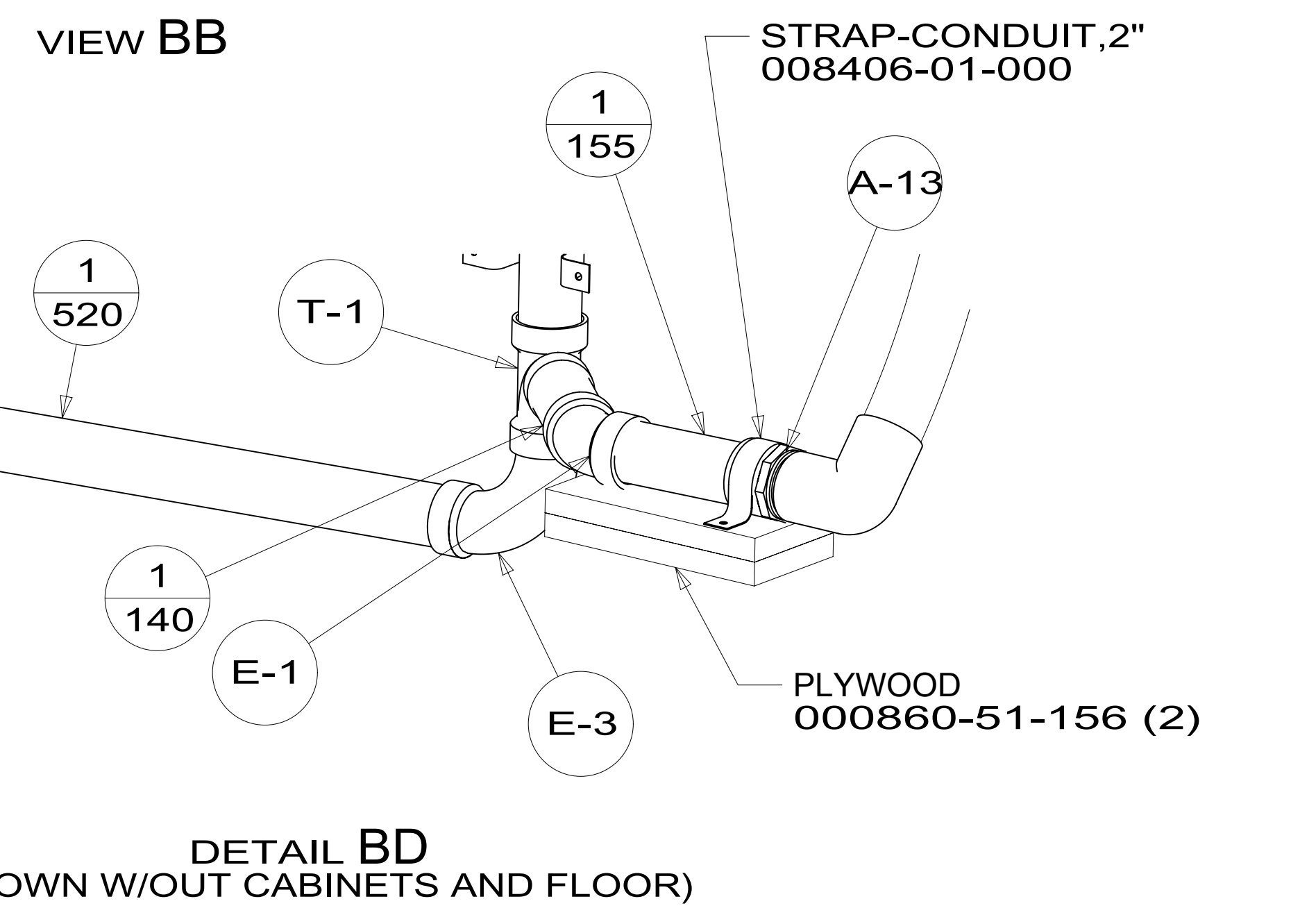
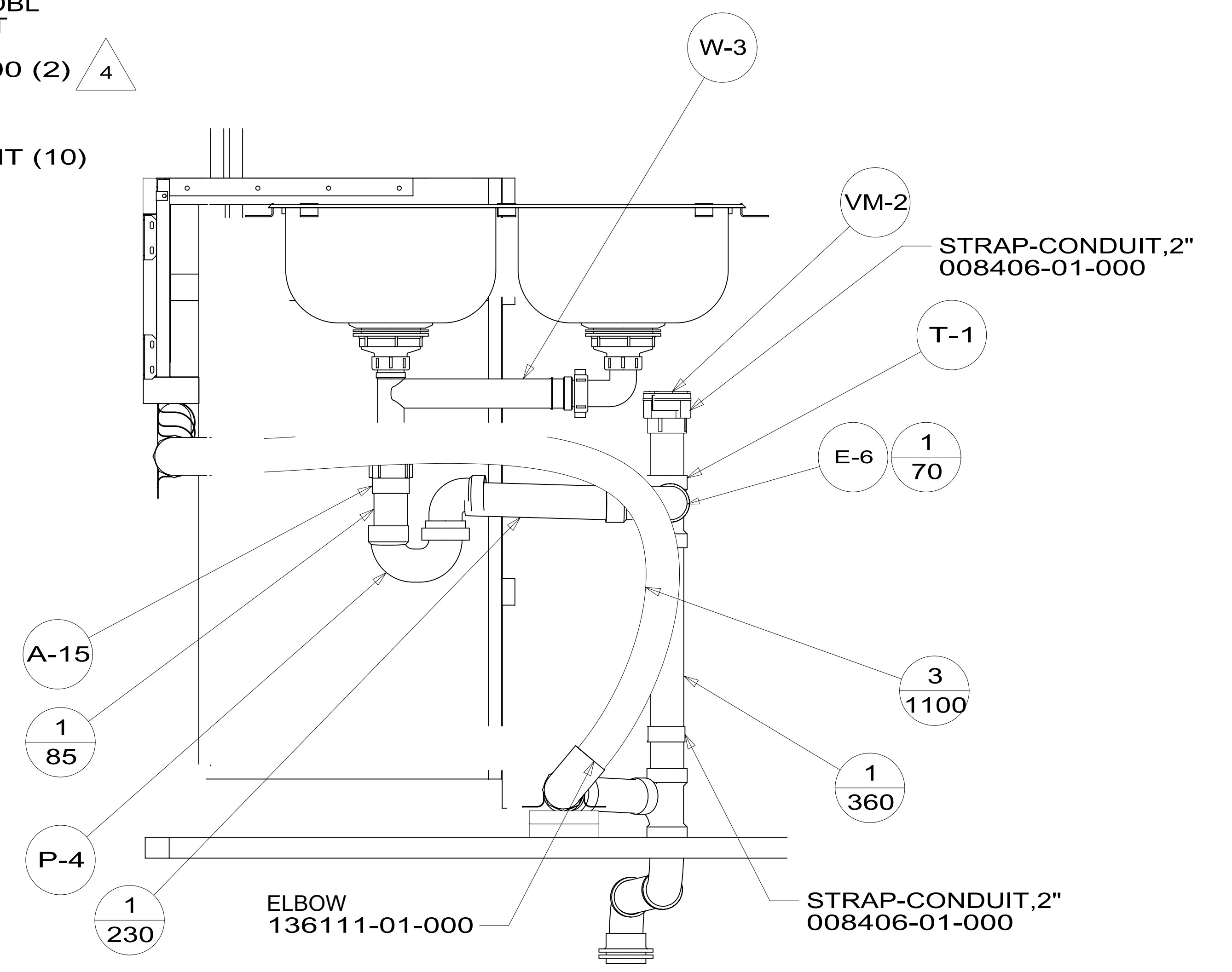
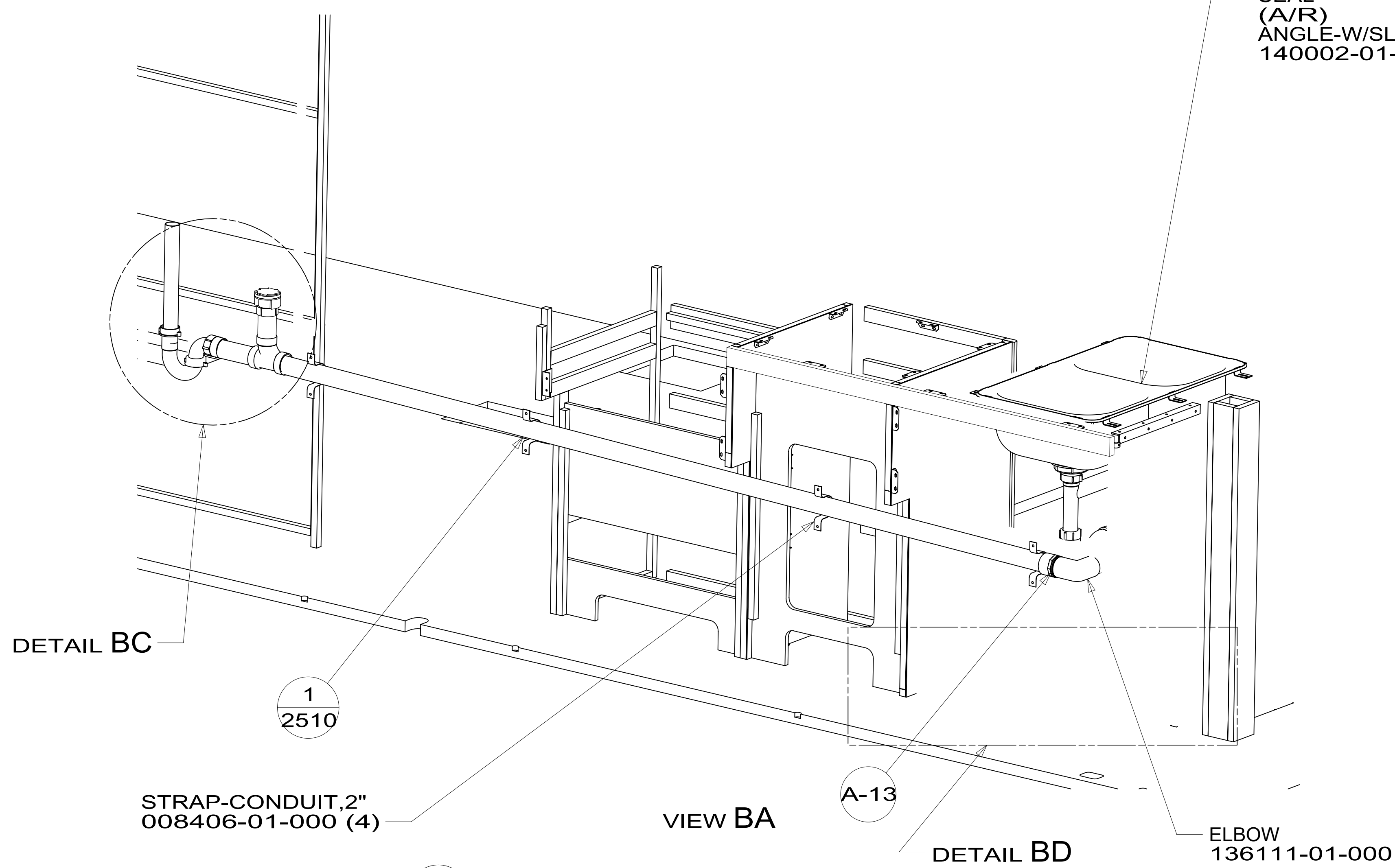
DESCRIPTION:
DRAINAGE SYSTEM INSTL

SHEET:	ITEM/PART NO.:	REV:
1 OF 5	000166148 / 32964101000	

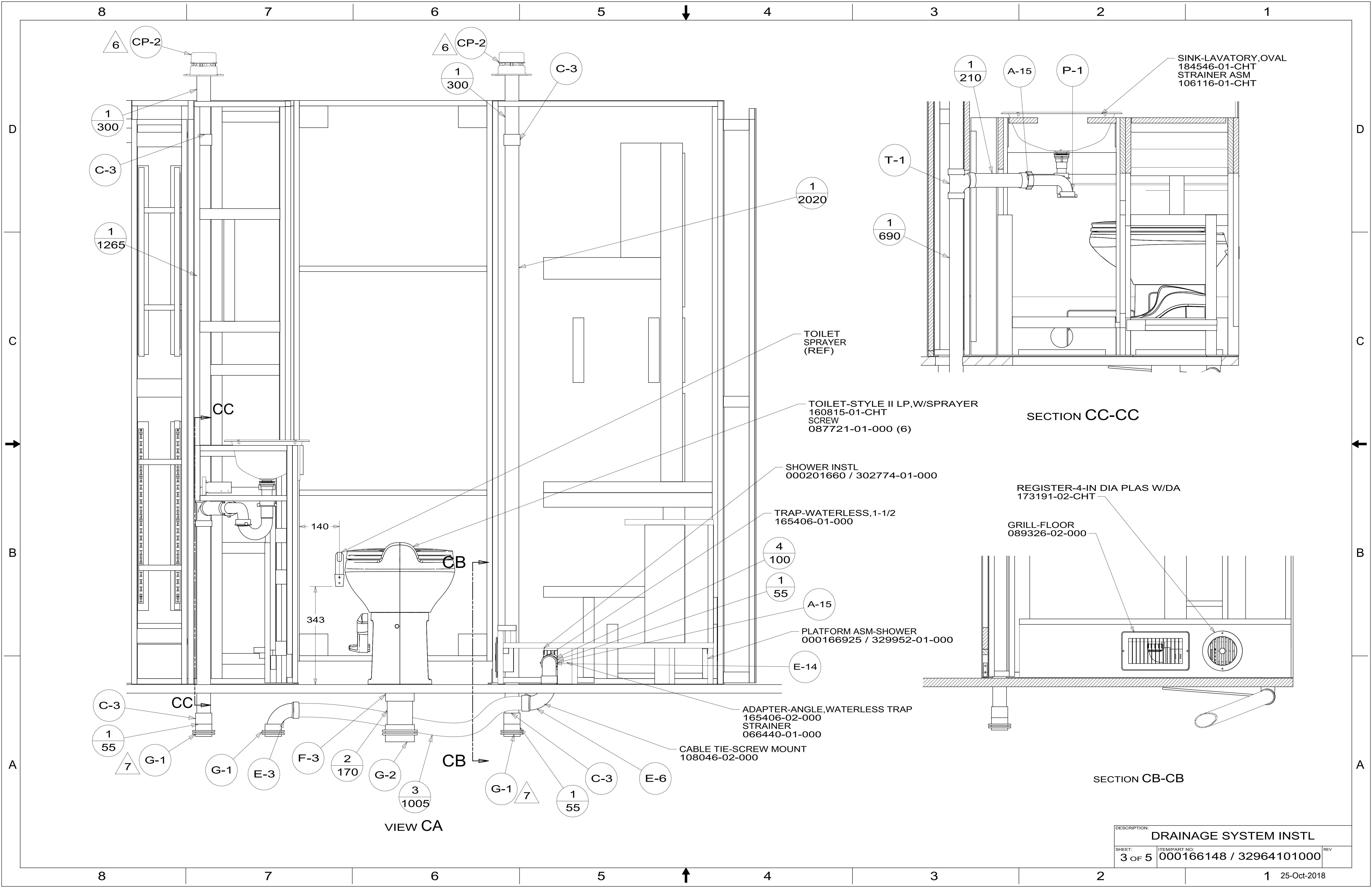
X-X
FOR DRAINAGE CALLOUTS SEE DWG NO. 000211962 / 303370-01-000



- SINK-GALLEY, DBL
 184806-01-CHT
 STRAINER
 092303-01-000 (2) \triangle 4
 SEAL
 (A/R)
 ANGLE-W/SLOT
 140002-01-CHT (10)



DESCRIPTION:		
DRAINAGE SYSTEM INSTL		
SHEET:	ITEM/PART NO.:	REV:
2 OF 5	000166148 / 32964101000	
		1 25-Oct-2018



6 CP-2

6 CP-2

1 300

C-3

1 300

C-3

1 1265

1 2020

1 690

1 210

A-15

P-1

SINK-LAVATORY, OVAL
184546-01-CHT
STRAINER ASM
106116-01-CHT

T-1

TOILET
SPRAYER
(REF)

TOILET-STYLE II LP, W/SPRAYER
160815-01-CHT
SCREW
087721-01-000 (6)

SHOWER INSTL
000201660 / 302774-01-000

TRAP-WATERLESS, 1-1/2
165406-01-000

4 100

1 55

A-15

PLATFORM ASM-SHOWER
000166925 / 329952-01-000

E-14

ADAPTER-ANGLE, WATERLESS TRAP
165406-02-000
STRAINER
066440-01-000

CABLE TIE-SCREW MOUNT
108046-02-000

C-3

1 55

7 G-1

G-1

E-3

F-3

2 170

G-2

3 1005

CB

G-1

7

1 55

C-3

E-6

VIEW CA

SECTION CC-CC

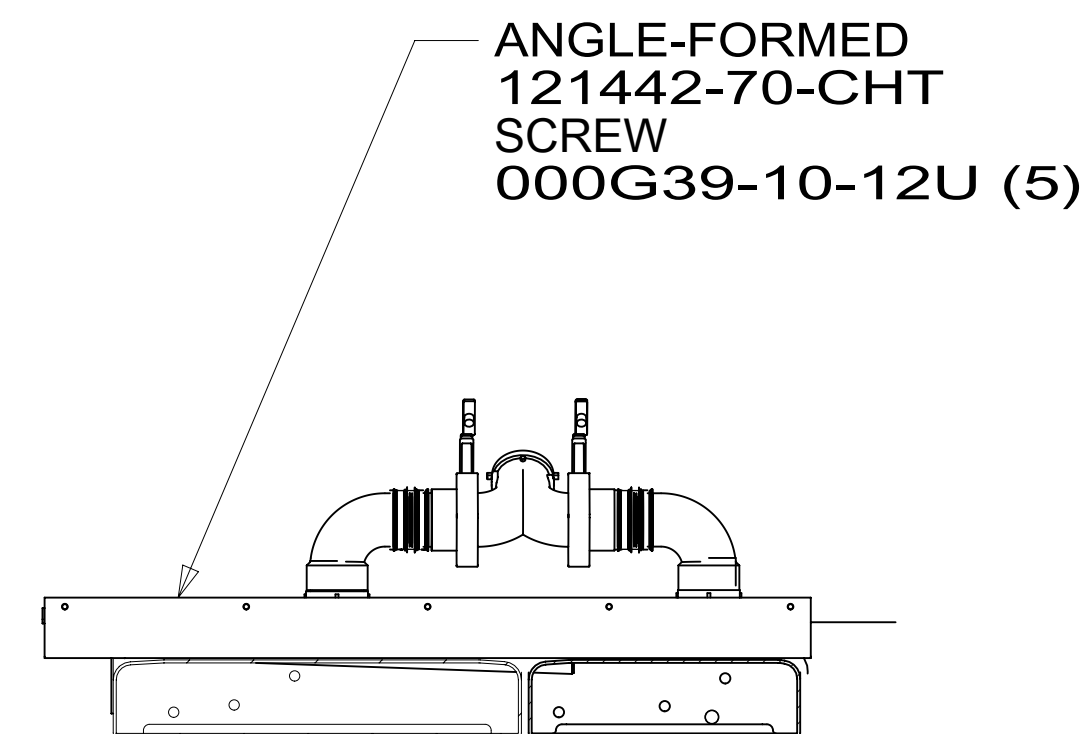
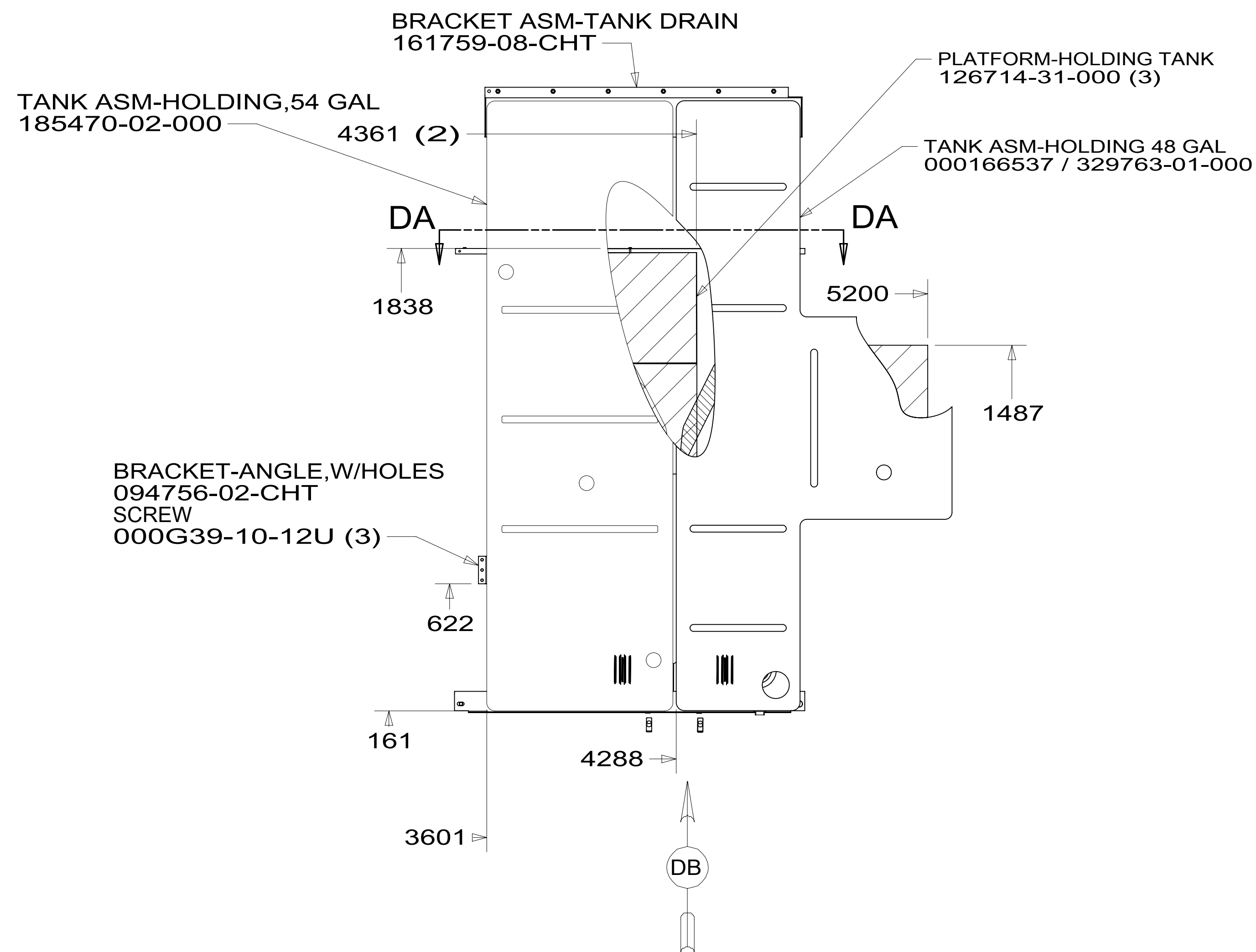
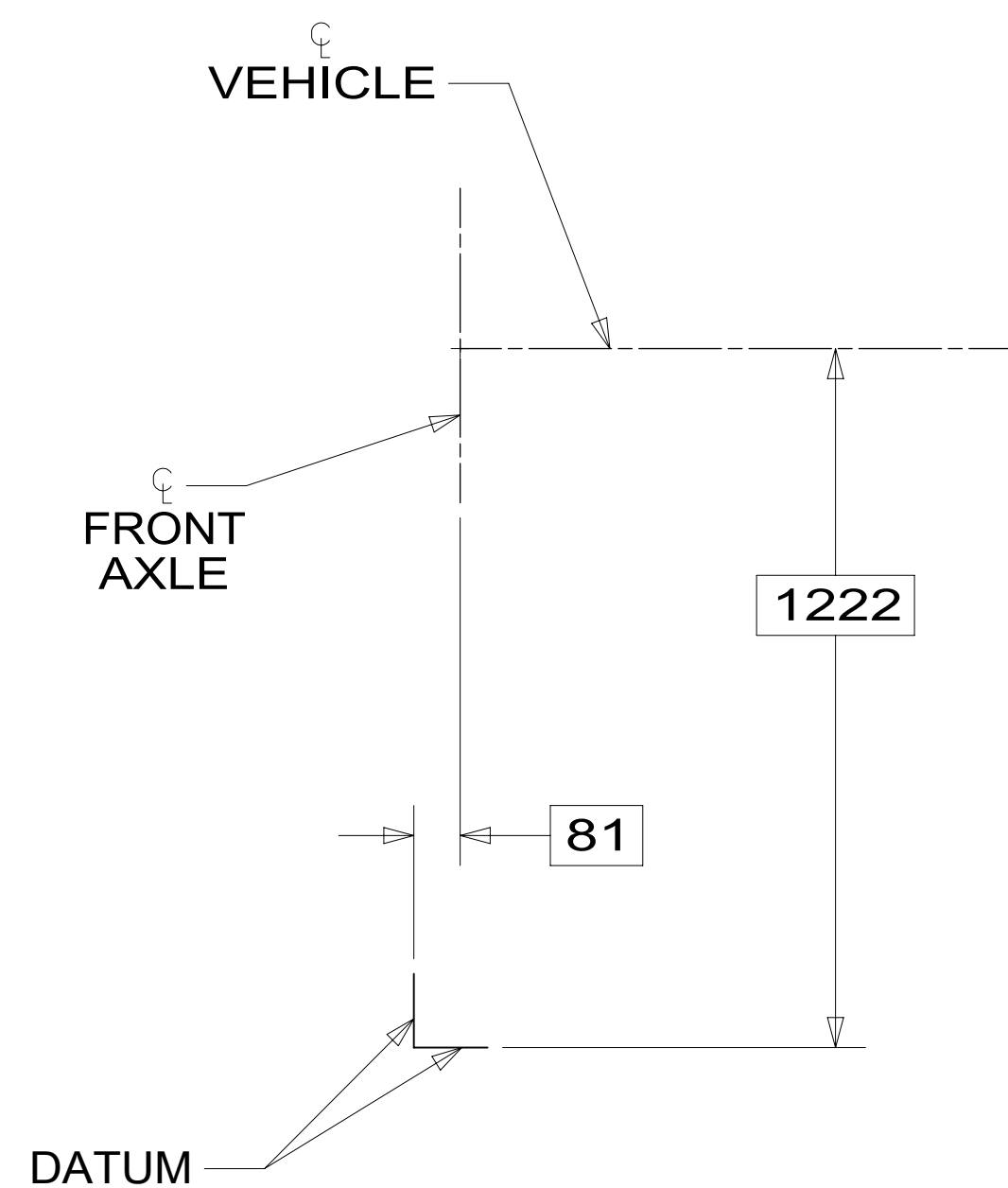
REGISTER-4-IN DIA PLAS W/DA
173191-02-CHT

GRILL-FLOOR
089326-02-000

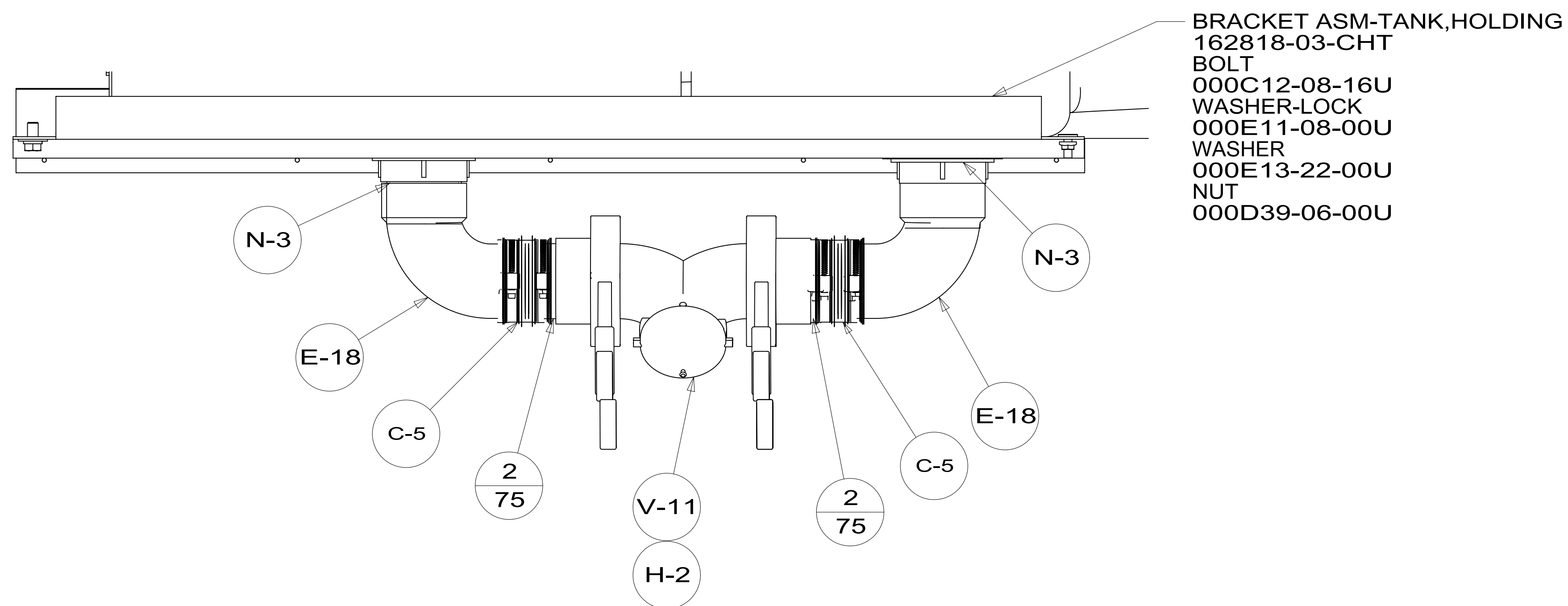
SECTION CB-CB

DESCRIPTION:		
DRAINAGE SYSTEM INSTL		
SHEET:	ITEM/PART NO.:	REV
3 OF 5	000166148 / 32964101000	

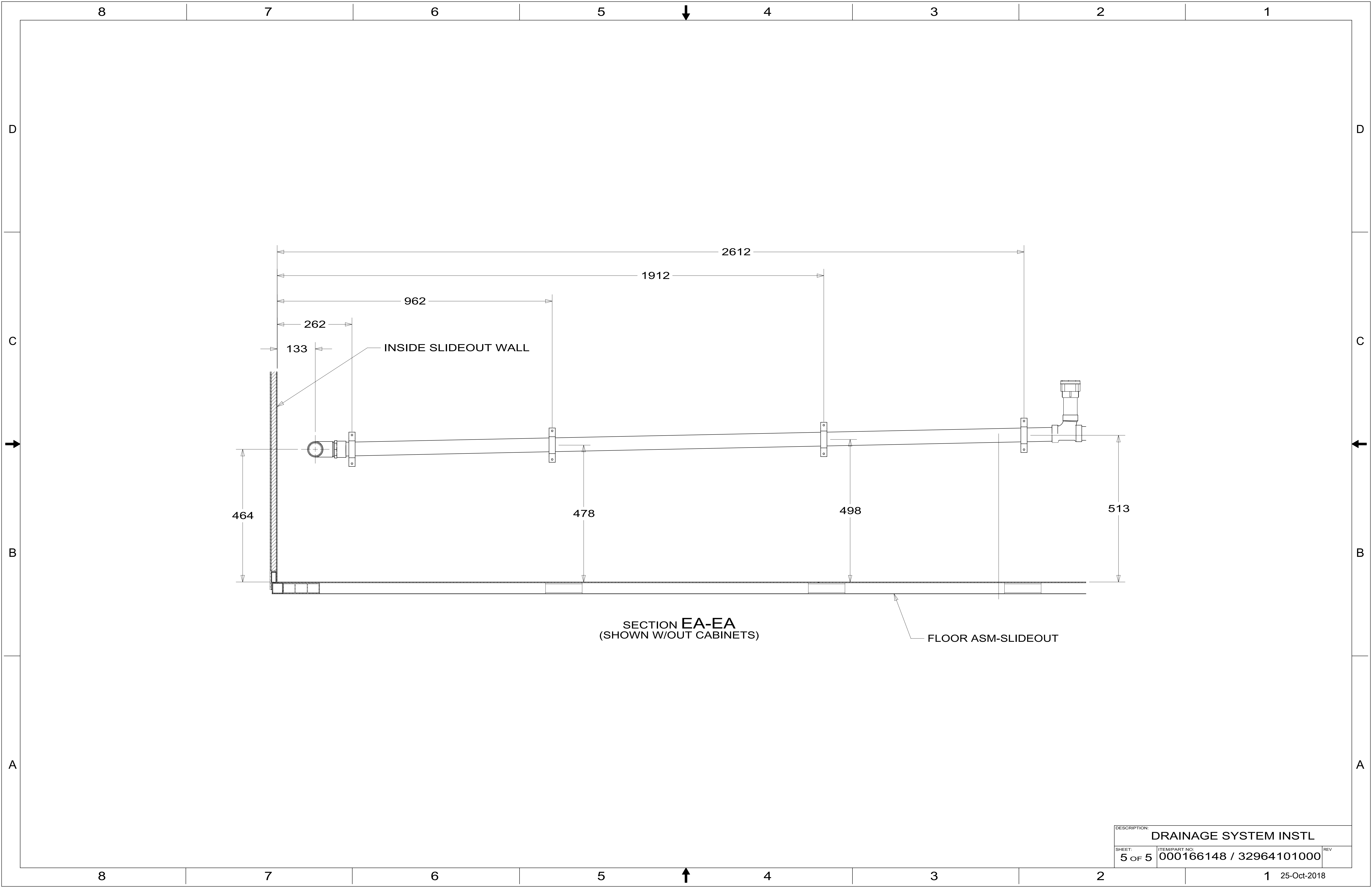
1 25-Oct-2018



TOP VIEW SHOWING ONLY DRAINS AND TANKS



DESCRIPTION: DRAINAGE SYSTEM INSTL		
SHEET: 4 OF 5	ITEM/PART NO: 000166148 / 32964101000	REV



DESCRIPTION:		
DRAINAGE SYSTEM INSTL		
SHEET:	ITEM/PART NO.:	REV
5 OF 5	000166148 / 32964101000	