

TV-50,FLAT PANEL ELED, HDTV
194671-01-000
SCREW
(SUPPLIED WITH TV)
NUT
D24-10-00U (8)
PLATE-MOUNTING ASM, TV
000131001 / 325637-01-CHT
PLATE-MOUNTING, TV
000178332 / 302680-01-CHT
NUT
D39-06-00U (4)
CONNECTOR-HDMI,90 UP
179395-02-000 (2)

SPEAKER-SOUNDBAR, WIRELESS SUB, SAMSUNG
000170008 / 330888-01-000
FASTENER-DUAL LOCK
085774-01-000 (50 MM)(2)
085774-02-000 (50 MM)(2)

78C OR 787 PLATE-WALL
149557-10-CHT
149557-09-CHT
SCREW
G67-10-08U (2)

789 RECEIVER-DISH,WALLY
000100988 / 327103-01-000
FASTENER-DUAL LOCK
85774-01-000 (200 MM)
85774-02-000 (200 MM)

BLU-RAY PLAYER W/WIFI
000183221 / 302822-01-000
FASTENER-DUAL LOCK
85774-01-000 (200 MM)
85774-02-000 (200 MM)

SUBWOOFER
(REF)

SPLITTER-HDMI, 1X2
178632-01-000
FASTENER-DUAL LOCK
85774-01-000 (100 MM)
85774-02-000 (100 MM)

45B & 787 BRACKET-ANTENNA,SATELLITE
000023112 / 314657-01-CHT
45B & 789 SCREW
000G39-08-12U (2)

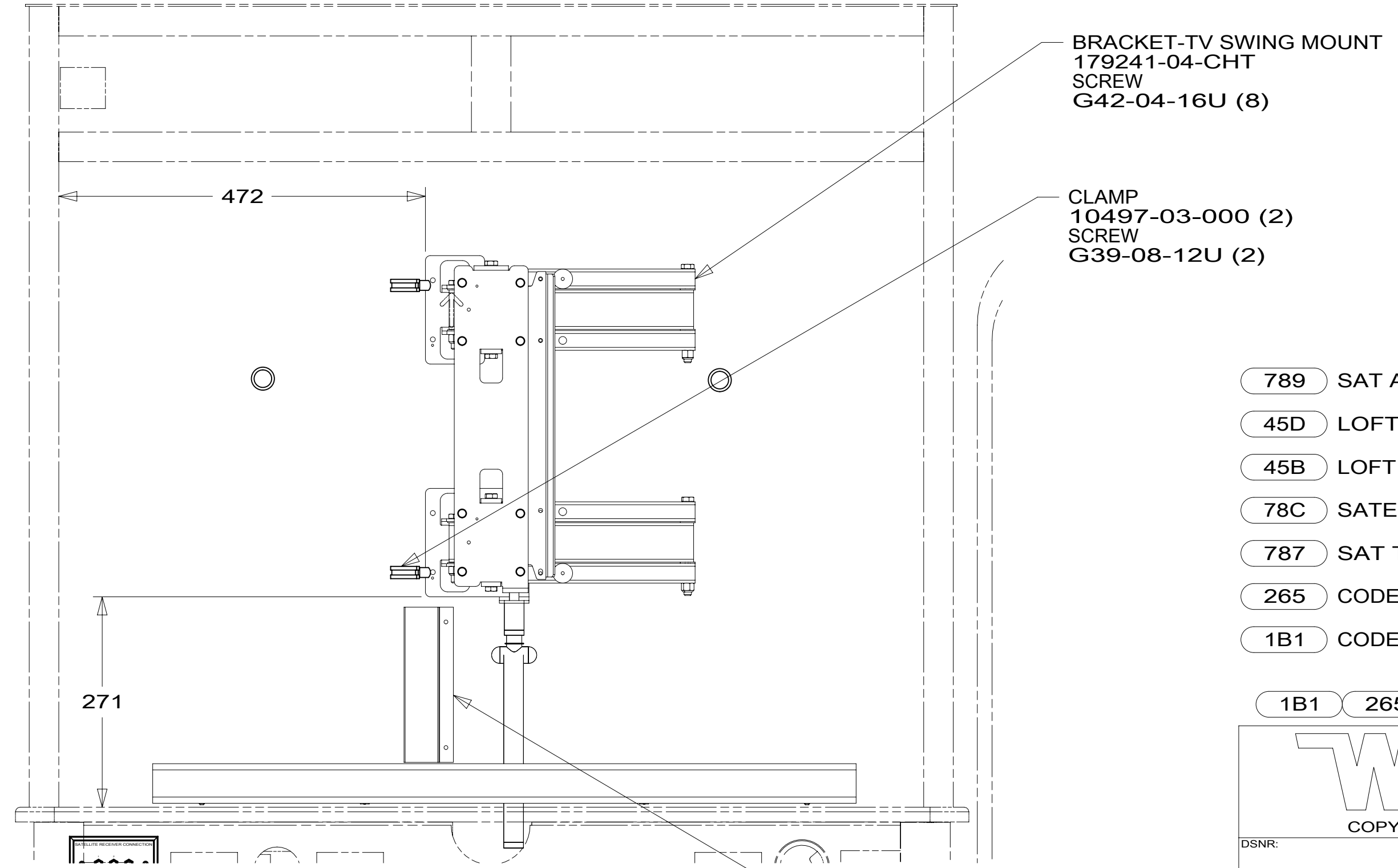
787 CONTROL-INTERIOR
183415-05-000
183415-02-000
789 FASTENER-DUAL LOCK
85774-01-000 (200 MM)
85774-02-000 (200 MM)

BOLT-HOOD
058786-03-000 (2)
NUT
D39-05-00U (2)

RCP-2 (PUR)
OVHD FRONT
PLATE-WALL,
POWER SUPPLY
179004-02-CHT

789 45D
787 45D
78C 45D
000007511 / 310614-01-XXX 45B

GROMMET-EDGE LINER
114208-05-000

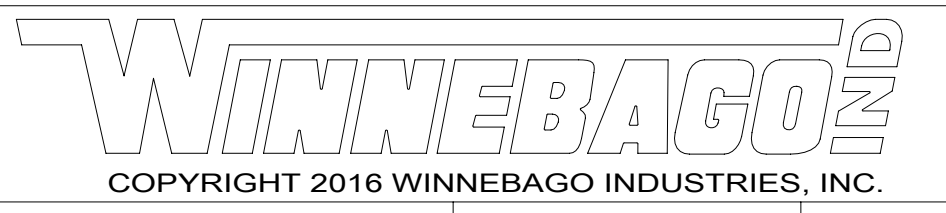


VIEW AA
(TV NOT SHOWN)

COVER-WIRE
176981-03-CHT
SCREW
G39-08-12U (2)

- 789 SAT ANT, AUTO DISH NETWORK
- 45D LOFT BED - WITHOUT
- 45B LOFT BED
- 78C SATELLITE SYSTEM READY
- 787 SAT TV ANT, AUTO DIRECTV
- 265 CODES/STANDARDS-CSA/CMVSS
- 1B1 CODES/STANDARDS USA

1B1 265

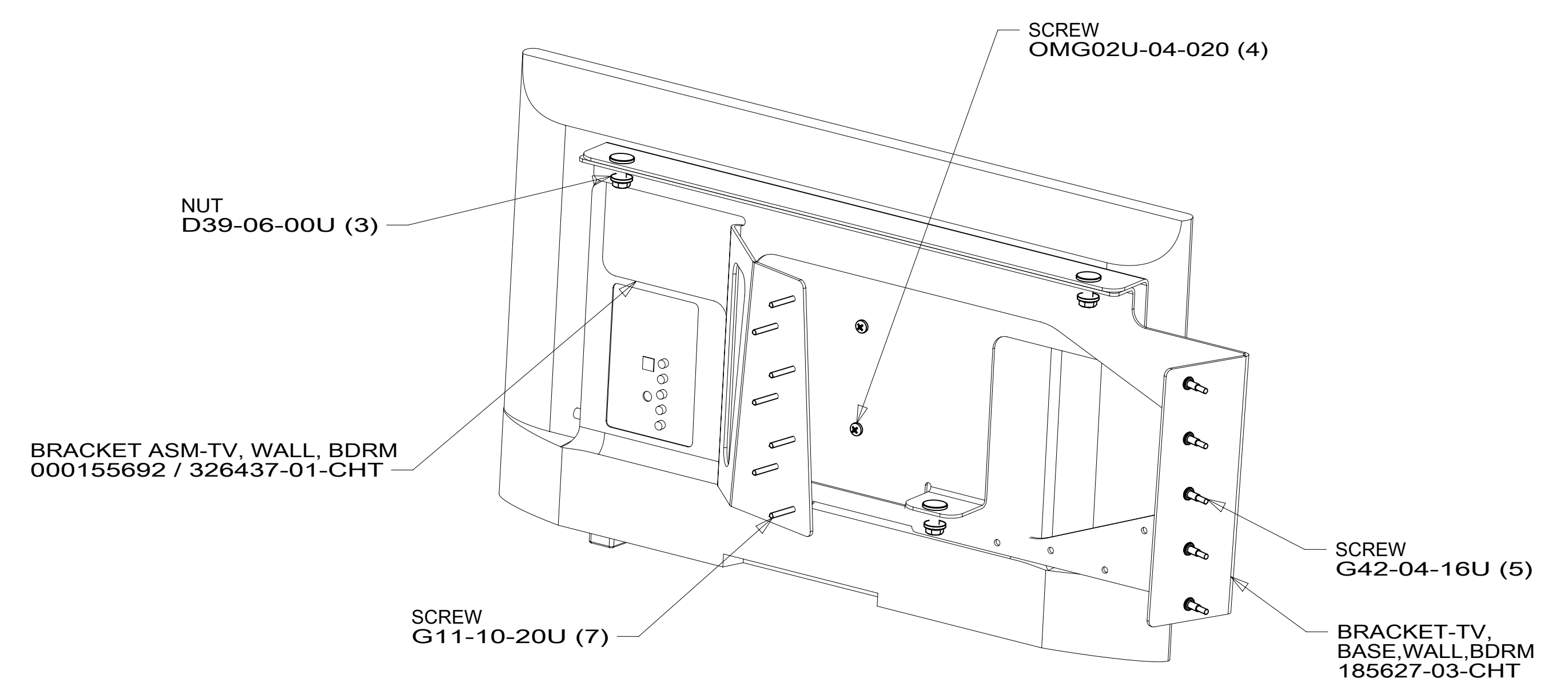
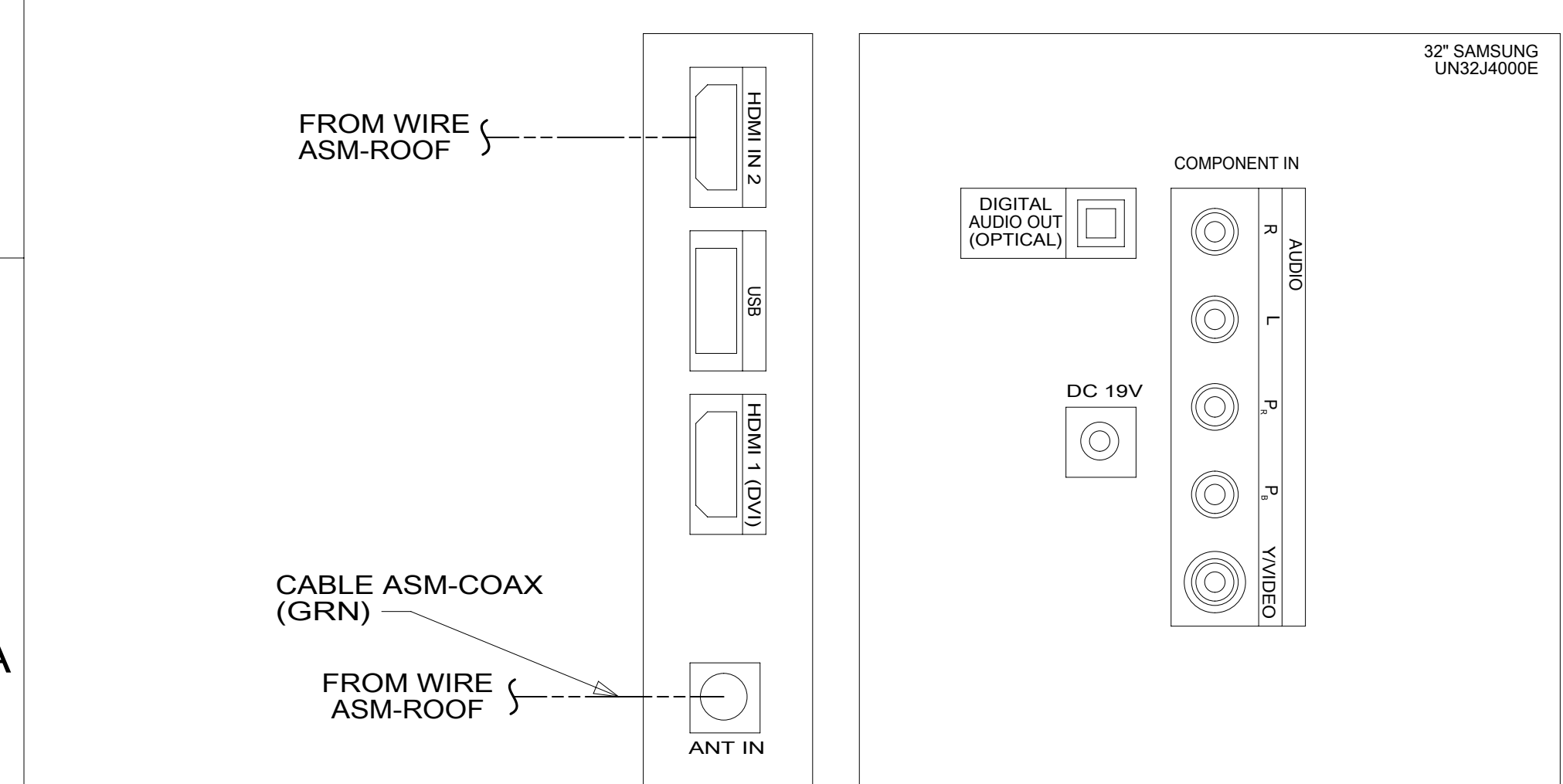
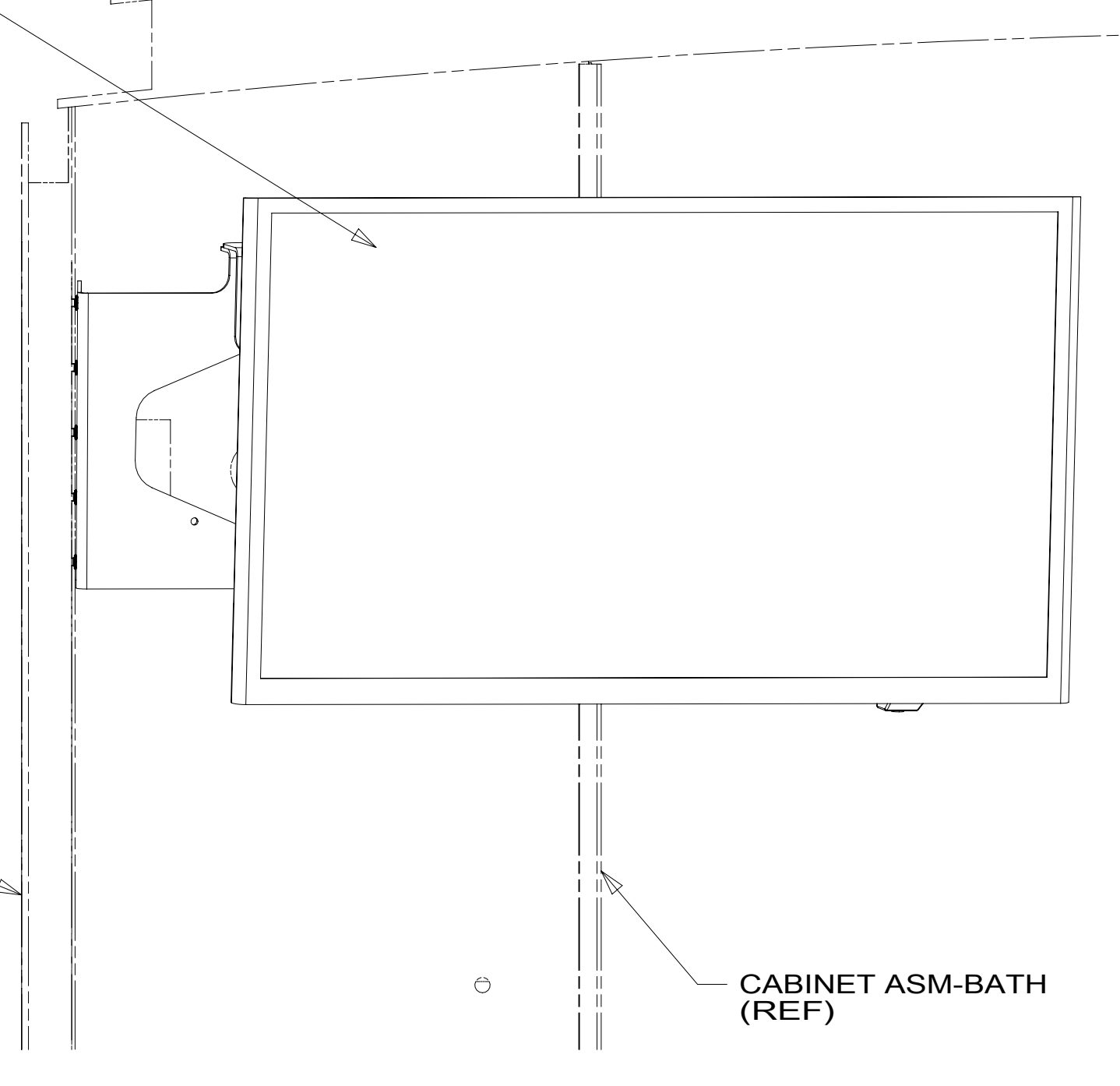
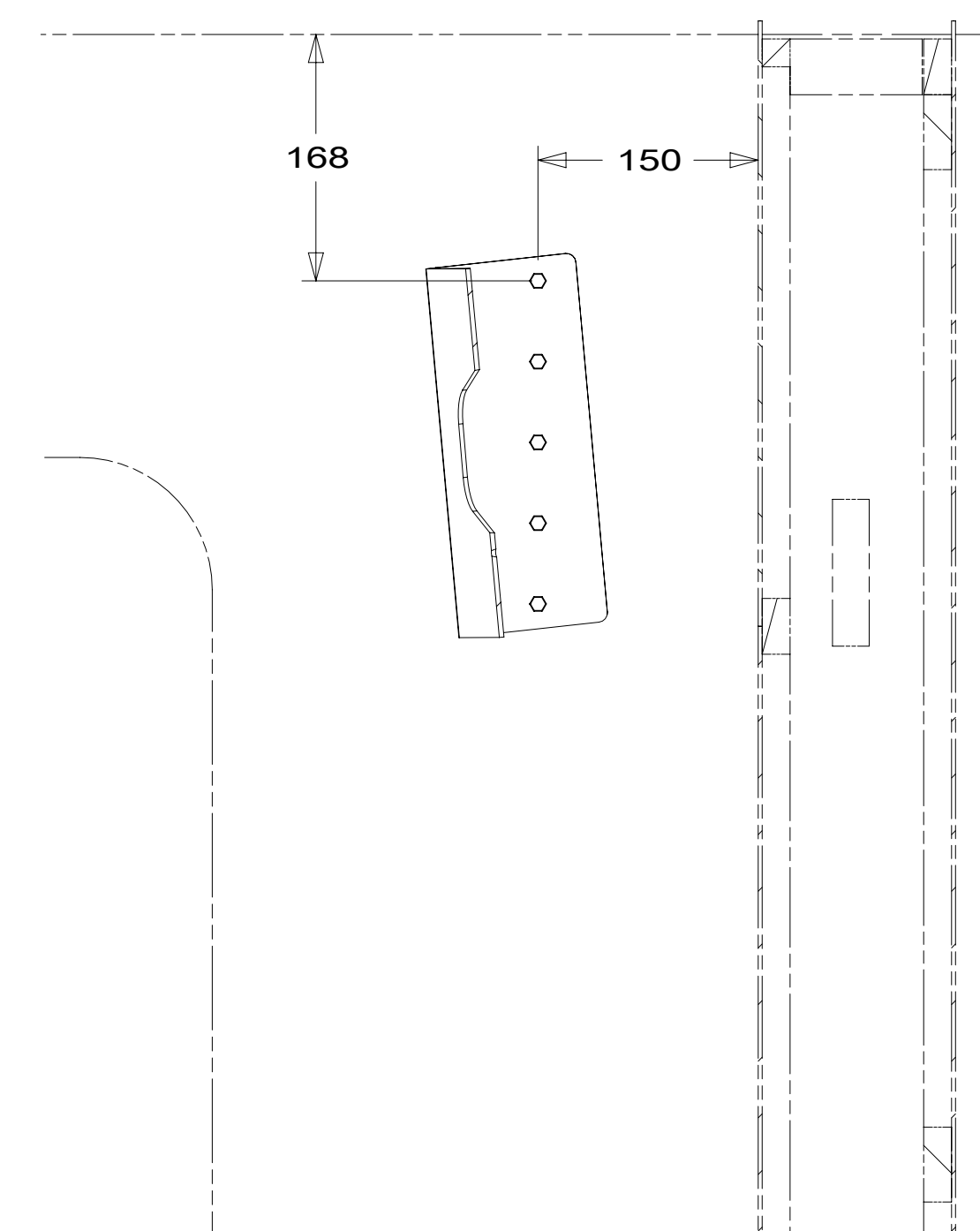
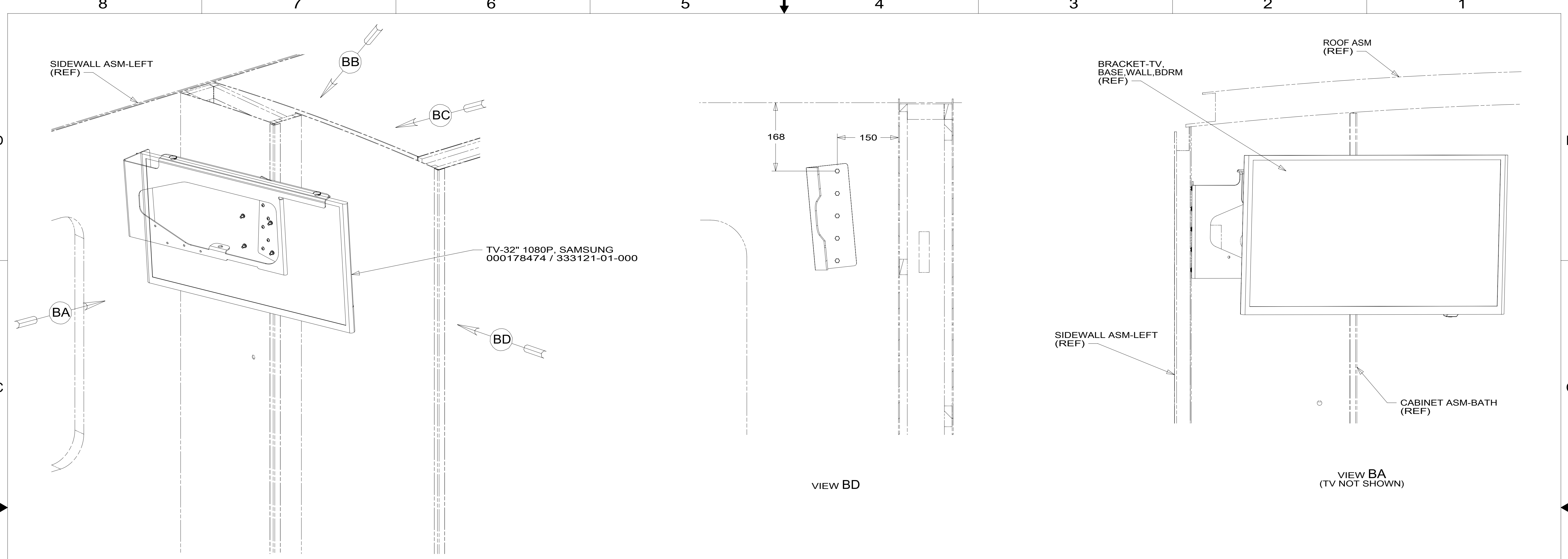


DSNR:		ALL DIMENSIONS ARE IN MILLIMETERS	
DIFFR:		MATERIAL:	
UNSPECIFIED TOLERANCES:	WHOLE DIM (X)	±	3
	ONE-PLACE (X.X)	±	1.5
	TWO-PLACE (X.XX)	±	0.50
	ANGLE	±	1°
REFER TO ES0018 FOR FASTENER TIGHTENING GUIDELINES		WEIGHT: (LBS)	FIRST USED:
			19 L34T
DESCRIPTION: WIRING INSTL-TV/DVD			
SHEET:	ITEM/PART NO.:	REV	
1 OF 3	000166077 / 32962101000		

FOR ELECTRICAL TORQUE SPECIFICATIONS SEE DWG NO. 128783-01-000

FOR ELECTRICAL CALLOUTS SEE DWG NO. 121339-01-000

- NOTES:
- 3 CONTROL IS MOUNTED IN REAR OF CABINET WITH 45B
 - 2 USE TIE-WIRE 8343-01-000 TO SUPPORT WIRE HERE.
 - 1 INTERIOR CONTROL CONNECTS TO SATELLITE DATA CABLE. SEE ROOF ASM FOR ADDITIONAL INFORMATION.

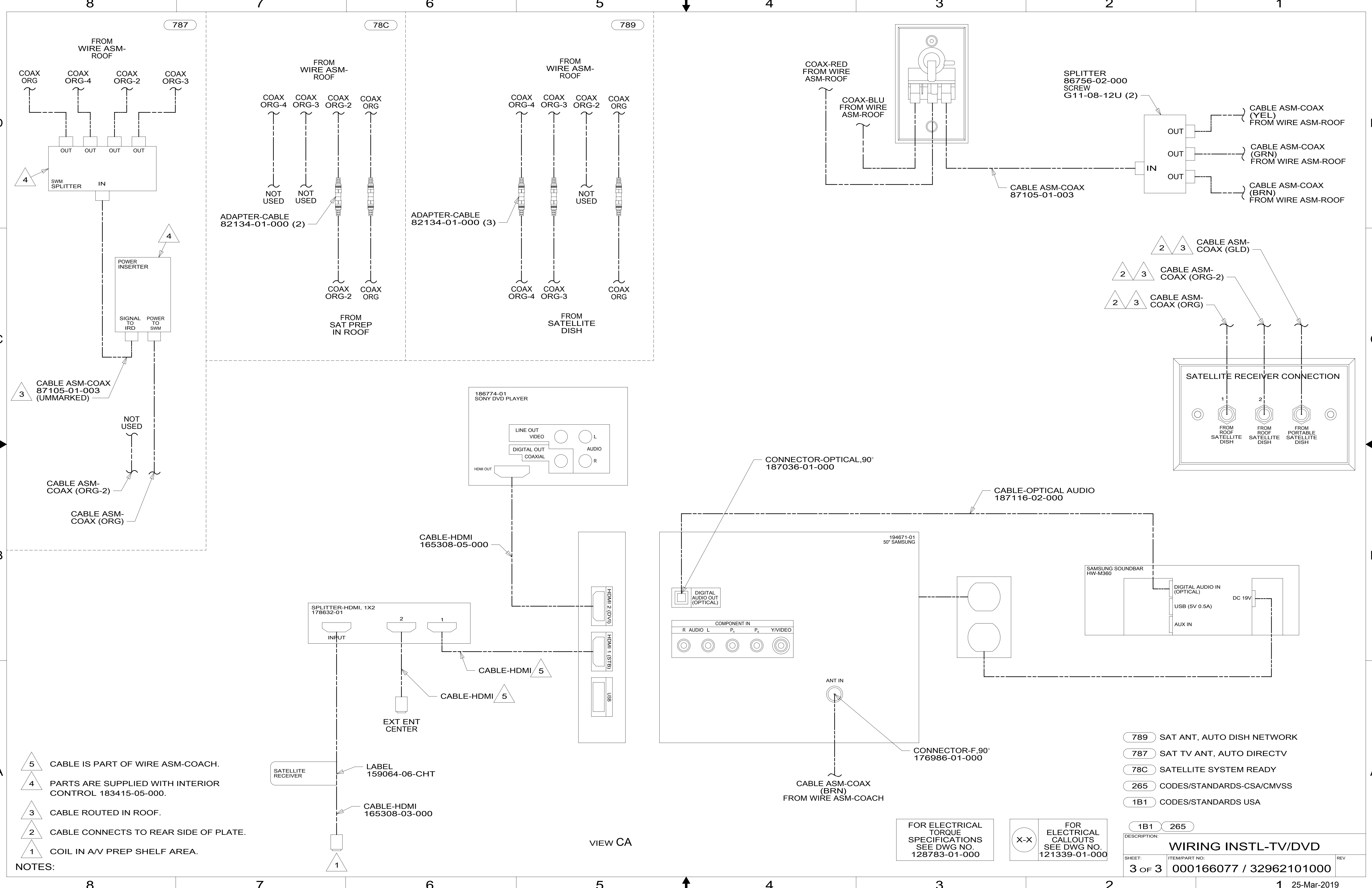


FOR ELECTRICAL TORQUE SPECIFICATIONS SEE DWG NO. 128783-01-000

FOR ELECTRICAL CALLOUTS SEE DWG NO. 121339-01-000

- 265 CODES/STANDARDS-CSA/CMVSS
- 1B1 CODES/STANDARDS USA

DESCRIPTION:		1B1 265	
WIRING INSTL-TV/DVD			
SHEET:	ITEM/PART NO.:	REV	
2 OF 3	000166077 / 32962101000		



- NOTES:
- 5 CABLE IS PART OF WIRE ASM-COACH.
 - 4 PARTS ARE SUPPLIED WITH INTERIOR CONTROL 183415-05-000.
 - 3 CABLE ROUTED IN ROOF.
 - 2 CABLE CONNECTS TO REAR SIDE OF PLATE.
 - 1 COIL IN AV PREP SHELF AREA.

- 789 SAT ANT, AUTO DISH NETWORK
- 787 SAT TV ANT, AUTO DIRECTV
- 78C SATELLITE SYSTEM READY
- 265 CODES/STANDARDS-CSA/CMVSS
- 1B1 CODES/STANDARDS USA

FOR ELECTRICAL TORQUE SPECIFICATIONS SEE DWG NO. 128783-01-000

FOR ELECTRICAL CALLOUTS SEE DWG NO. 121339-01-000

DESCRIPTION:	WIRING INSTL-TV/DVD	
SHEET:	ITEM/PART NO:	REV
3 OF 3	000166077 / 32962101000	