

8 7 6 5 4 3 2 1

D

D

C

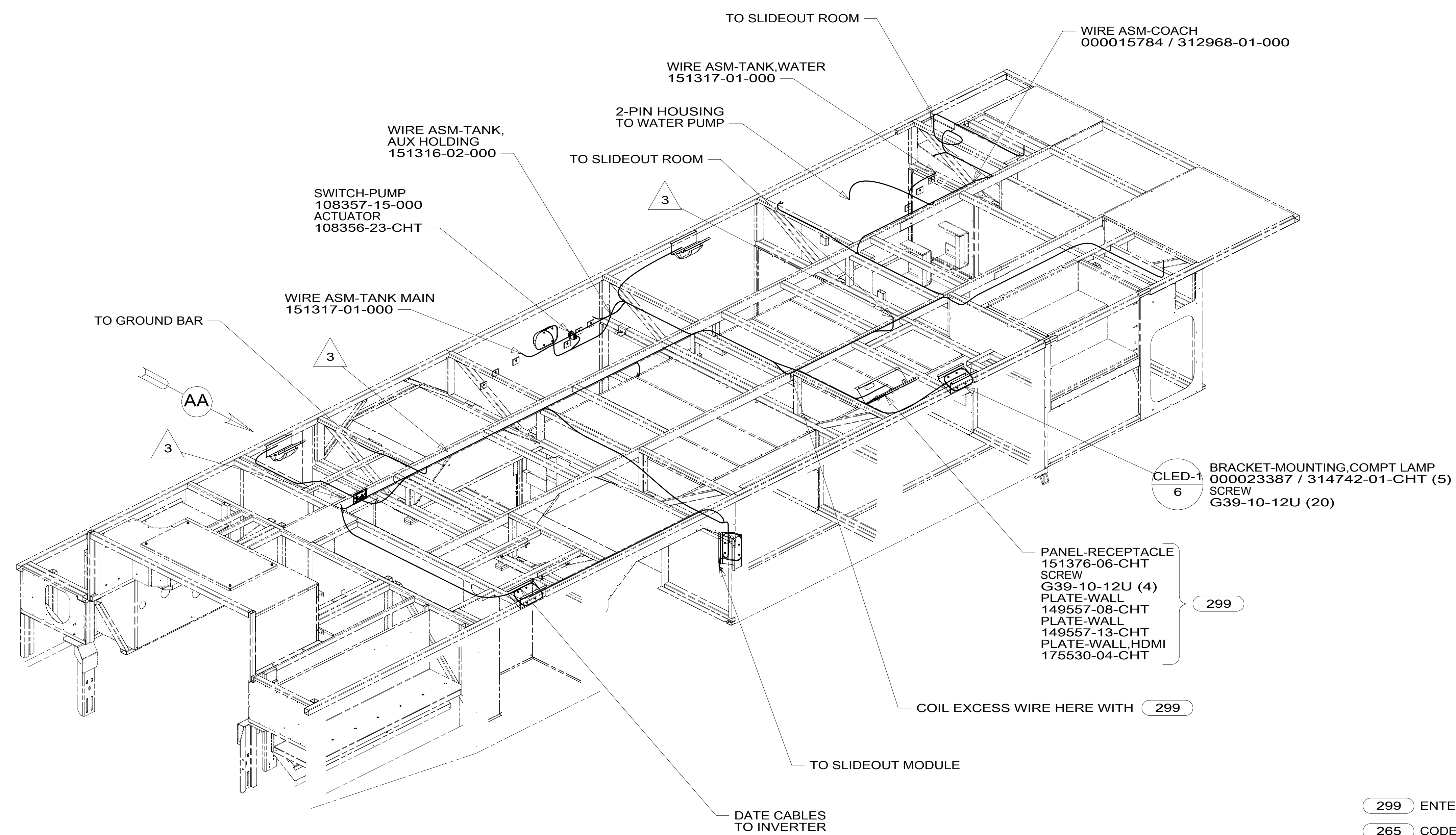
C

B

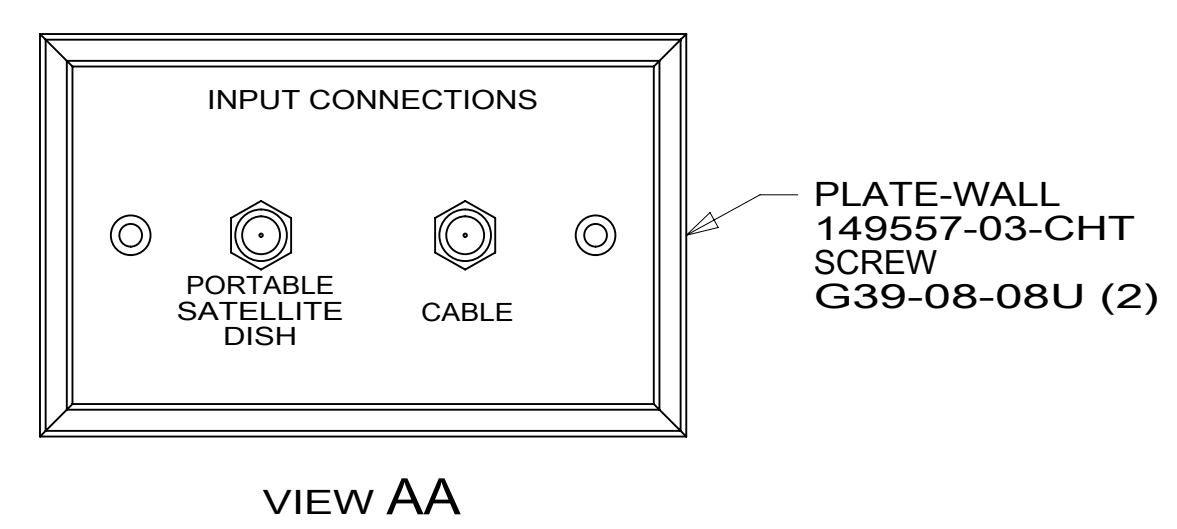
B

A

A



- 3 WIRE PASSES THROUGH FLOOR IN THIS AREA.
2. ROUTE TANK SENSOR WIRES SO THEY DO NOT PASS OVER SENSORS. USE WIRE TIE MOUNT 155366-01-000 AND WIRE TIE 8343-01-000 AS NEEDED. TANK SURFACE MUST BE CLEANED USING ISOPROPYL ALCOHOL AND PRIMED WITH PRIMER 94.
  1. AT MINIMUM ALL WIRES TO BE SUPPORTED AND SECURED PER CODE REQUIREMENTS. USE CLAMP 10495 OR 10497 OR WIRE TIE 8343 OR 108046 AND SCREW G67-XX-XXX OR G56-XX-XXX AS APPROPRIATE FOR INSTALLATION.



FOR ELECTRICAL TORQUE SPECIFICATIONS SEE DWG NO. 128783-01-000

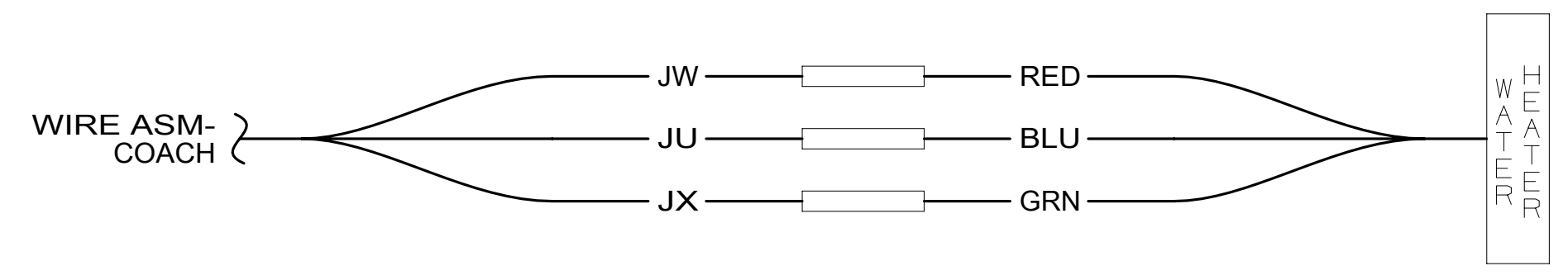
FOR ELECTRICAL CALLOUTS SEE DWG NO. 121339-01-000

- 299 ENTERTAINMENT CENTER EXT.W/O
- 265 CODES/STANDARDS-CSA/CMVSS
- 1B1 CODES/STANDARDS USA

1B1 265

COPYRIGHT 2016 WINNEBAGO INDUSTRIES, INC.

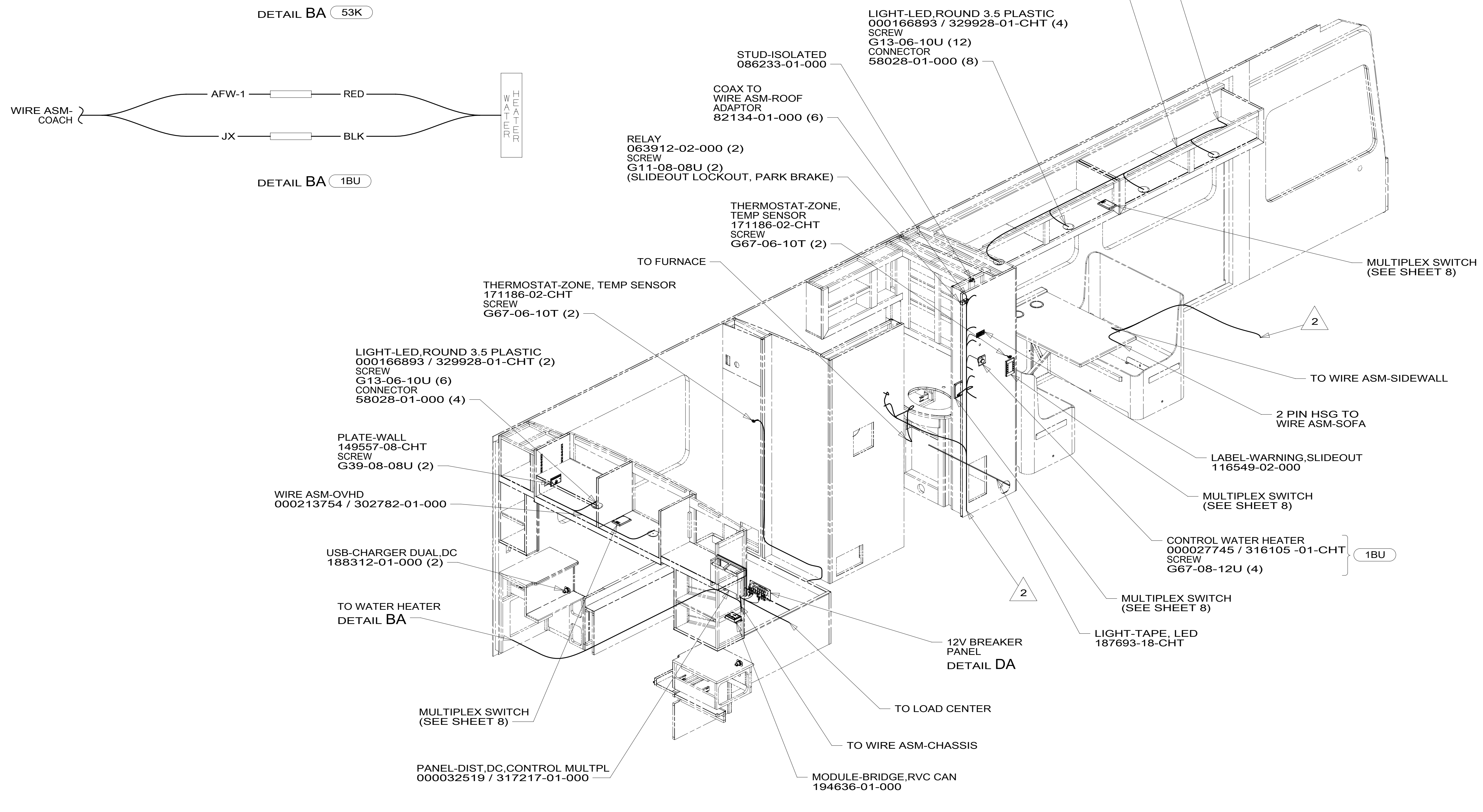
DSNR:		ALL DIMENSIONS ARE IN MILLIMETERS	
DFFR:		MATERIAL:	
UNSPECIFIED TOLERANCES:			
WHOLE DIM (X)	3		
ONE-PLACE (X.X)	1.5		
TWO-PLACE (X.XX)	0.50		
ANGLE	1°		
REFER TO ES0018 FOR FASTENER TIGHTENING GUIDELINES		WEIGHT: (LBS)	FIRST USED:
			19 L34T
DESCRIPTION:			
WIRING INSTL-BODY, 12V			
SHEET:	ITEM/PART NO.:	REV:	
1 OF 8	000166073 / 32961801000		
REF:			



DETAIL BA 53K



DETAIL BA 1BU



2 WIRE PASSES THROUGH FLOOR IN THIS AREA.

1. AT MINIMUM ALL WIRES TO BE SUPPORTED AND SECURED PER CODE REQUIREMENTS. USE CLAMP 10495 OR 10497 OR WIRE TIE 8343 OR 108046 AND SCREW G67-XX-XXX OR G56-XX-XXX AS APPROPRIATE FOR INSTALLATION.

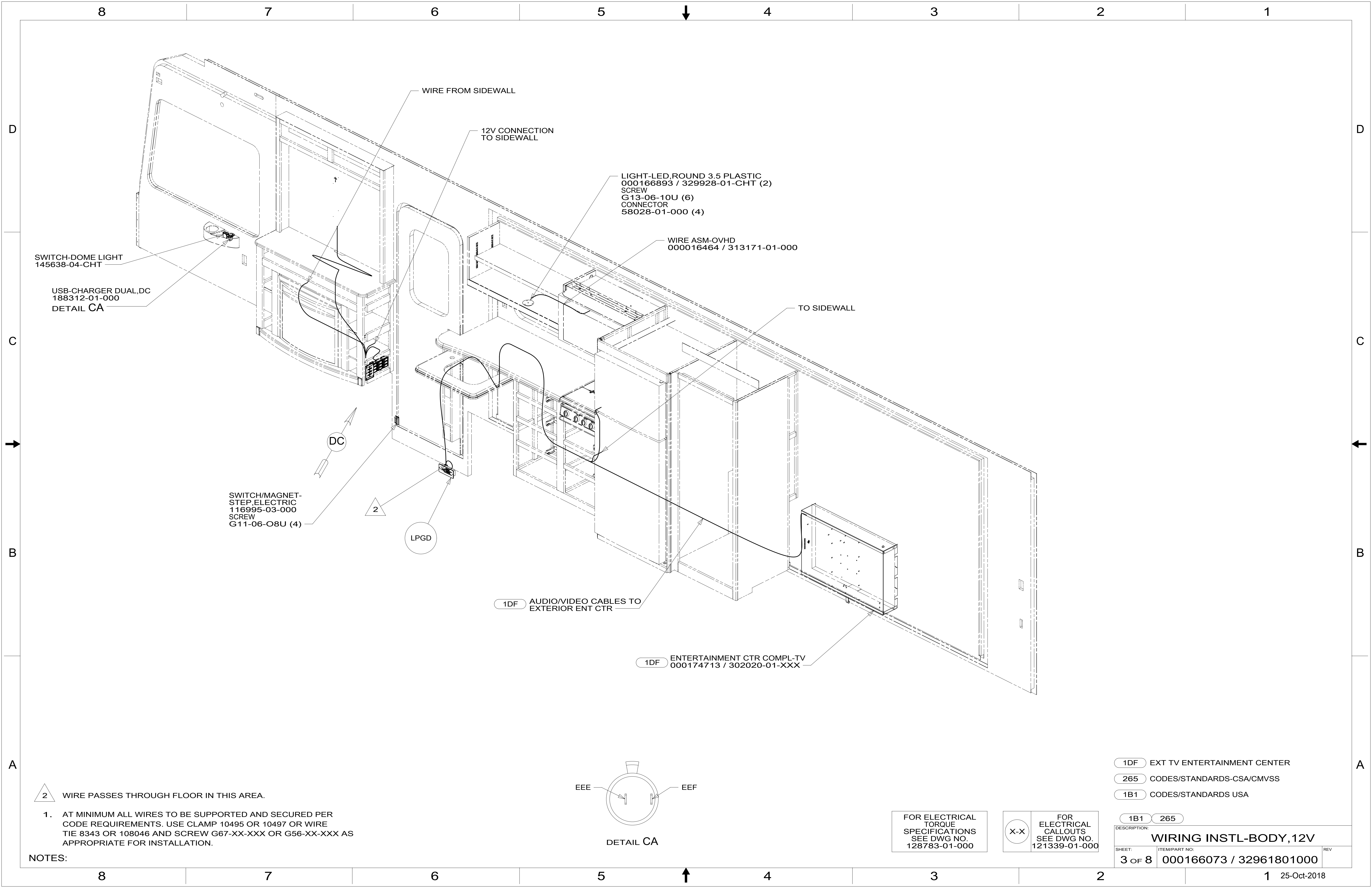
NOTES:

FOR ELECTRICAL TORQUE SPECIFICATIONS SEE DWG NO. 128783-01-000

FOR ELECTRICAL CALLOUTS SEE DWG NO. 121339-01-000

- 53K WTR HTR-10GAL/ELECTRIC/LPGAS
- 1BU WTR HTR TKLS W/RECIRCUL PUMP
- 265 CODES/STANDARDS-CSA/CMVSS
- 1B1 CODES/STANDARDS USA

DESCRIPTION:		1B1 265	
<b>WIRING INSTL-BODY, 12V</b>			
SHEET:	ITEM/PART NO.:	REV	
2 OF 8	000166073 / 32961801000		



SWITCH-DOME LIGHT  
145638-04-CHT

USB-CHARGER DUAL,DC  
188312-01-000  
DETAIL CA

SWITCH/MAGNET-  
STEP,ELECTRIC  
116995-03-000  
SCREW  
G11-06-O8U (4)

LPGD

WIRE FROM SIDEWALL

12V CONNECTION  
TO SIDEWALL

LIGHT-LED,ROUND 3.5 PLASTIC  
000166893 / 329928-01-CHT (2)  
SCREW  
G13-06-10U (6)  
CONNECTOR  
58028-01-000 (4)

WIRE ASM-OVHD  
000016464 / 313171-01-000

TO SIDEWALL

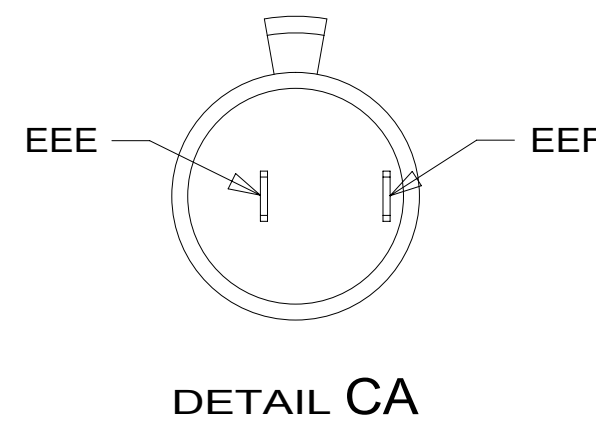
1DF AUDIO/VIDEO CABLES TO  
EXTERIOR ENT CTR

1DF ENTERTAINMENT CTR COMPL-TV  
000174713 / 302020-01-XXX

2 WIRE PASSES THROUGH FLOOR IN THIS AREA.

1. AT MINIMUM ALL WIRES TO BE SUPPORTED AND SECURED PER  
CODE REQUIREMENTS. USE CLAMP 10495 OR 10497 OR WIRE  
TIE 8343 OR 108046 AND SCREW G67-XX-XXX OR G56-XX-XXX AS  
APPROPRIATE FOR INSTALLATION.

NOTES:



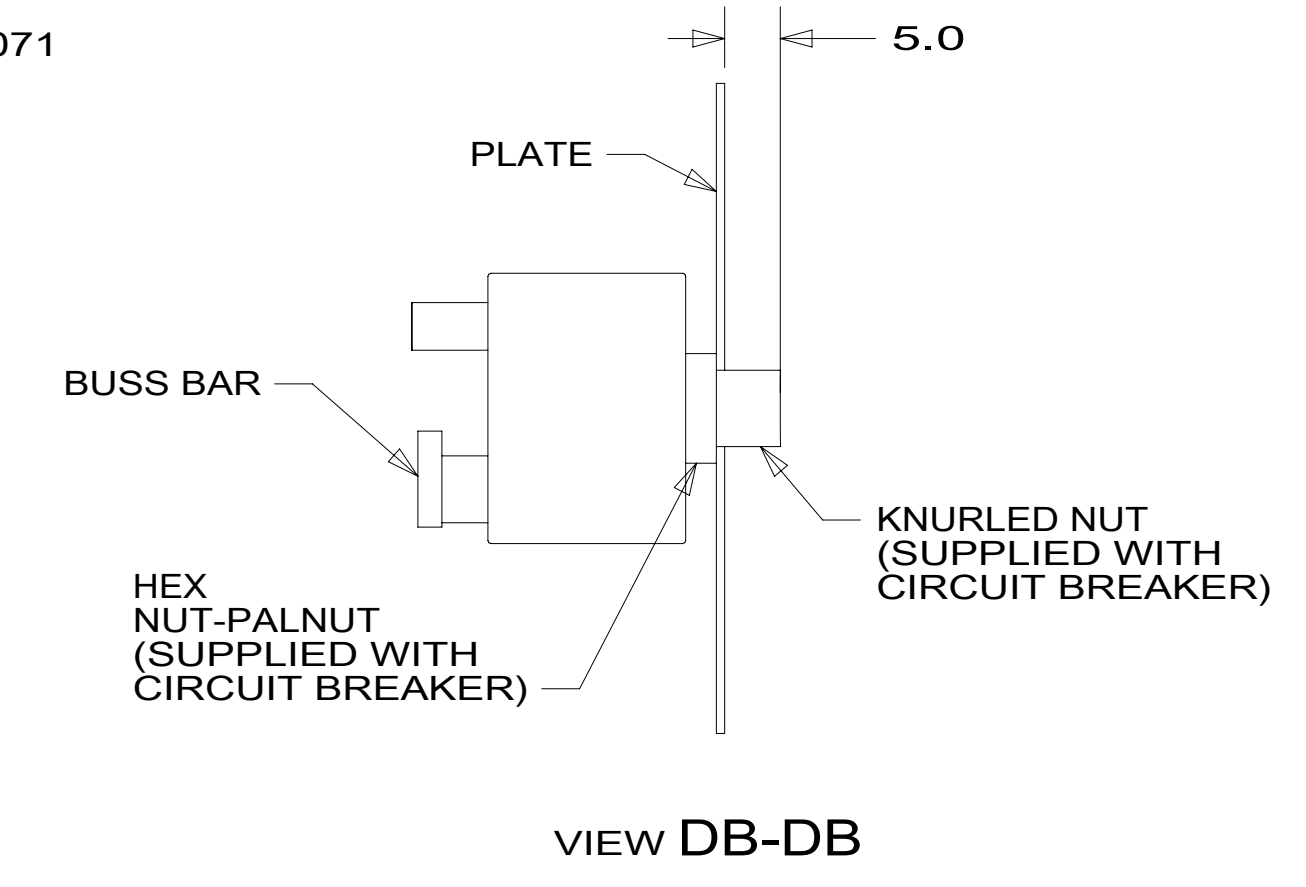
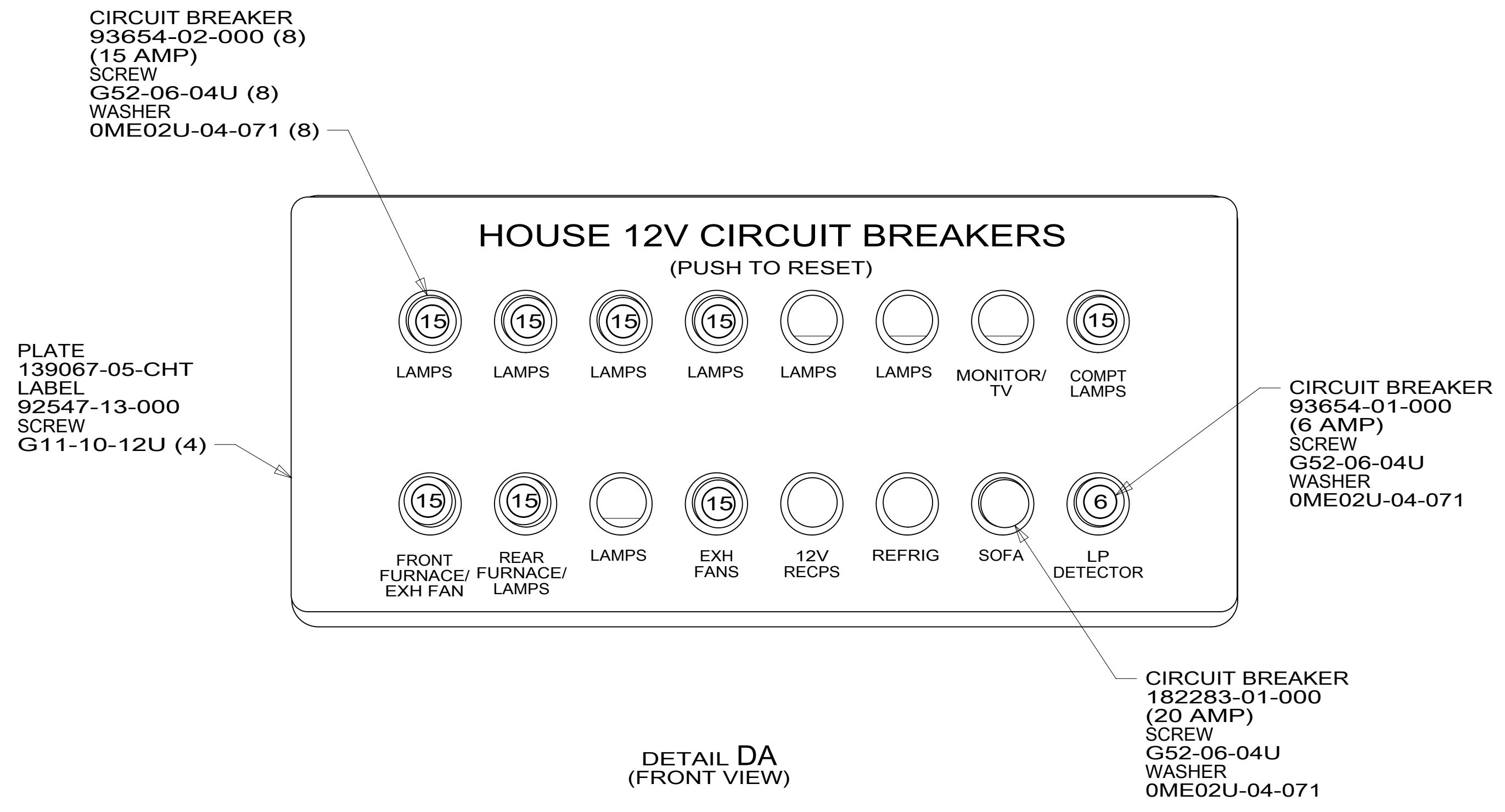
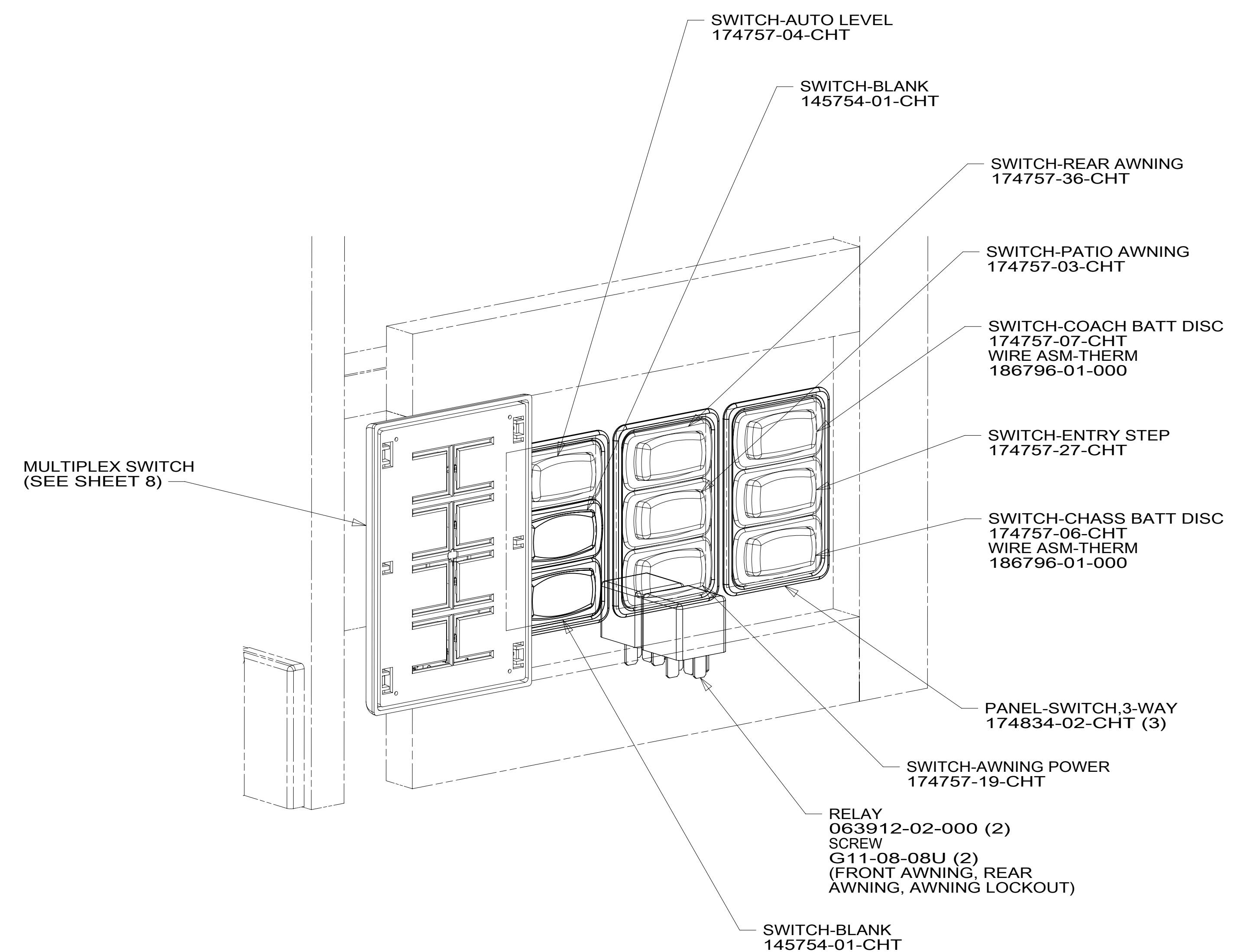
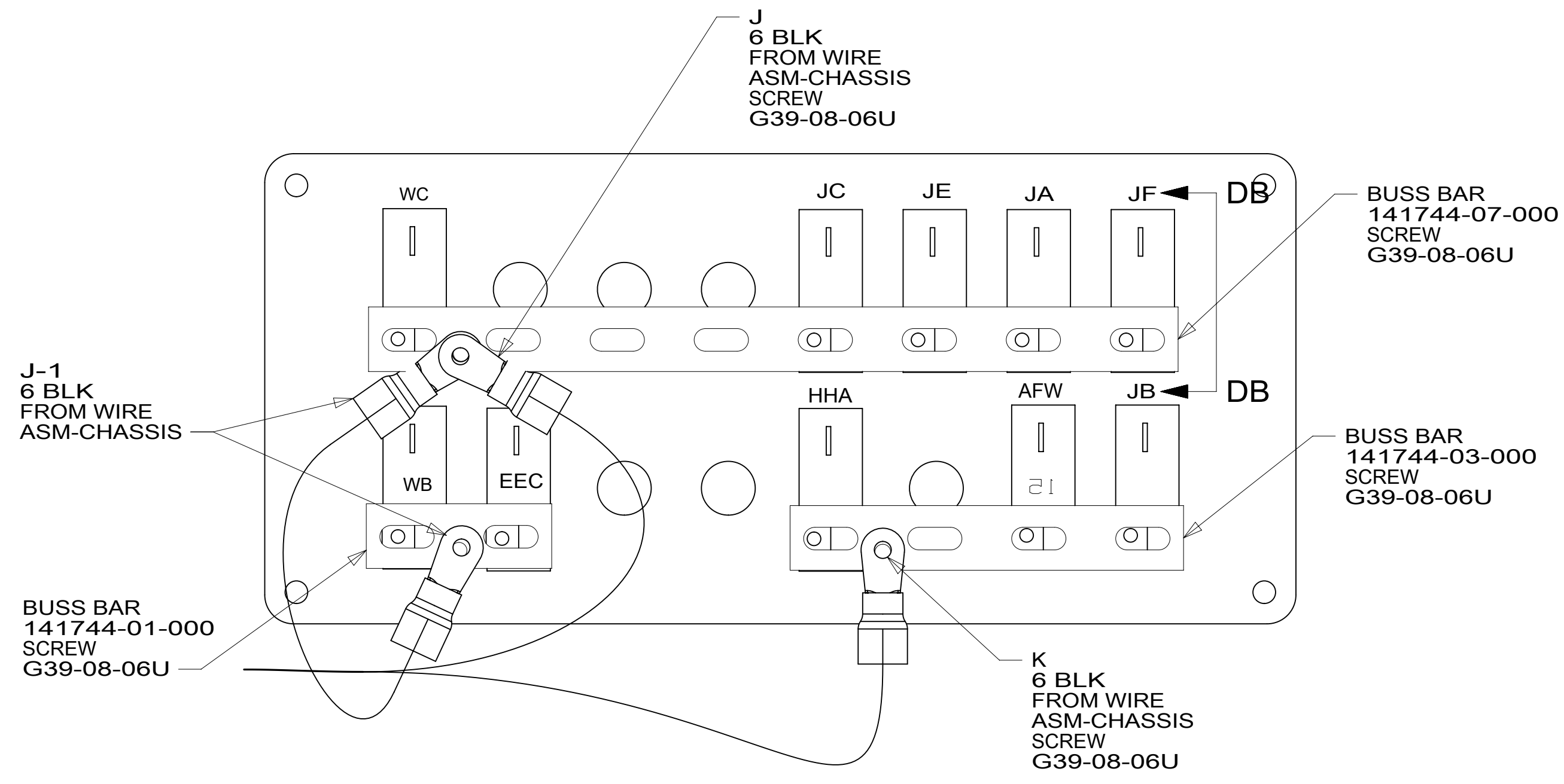
FOR ELECTRICAL  
TORQUE  
SPECIFICATIONS  
SEE DWG NO.  
128783-01-000

FOR  
ELECTRICAL  
CALLOUTS  
SEE DWG NO.  
121339-01-000

- 1DF EXT TV ENTERTAINMENT CENTER
- 265 CODES/STANDARDS-CSA/CMVSS
- 1B1 CODES/STANDARDS USA

1B1 265  
DESCRIPTION:  
**WIRING INSTL-BODY, 12V**

SHEET: 3 OF 8 ITEM/PART NO: 000166073 / 32961801000 REV



FOR ELECTRICAL TORQUE SPECIFICATIONS SEE DWG NO. 128783-01-000

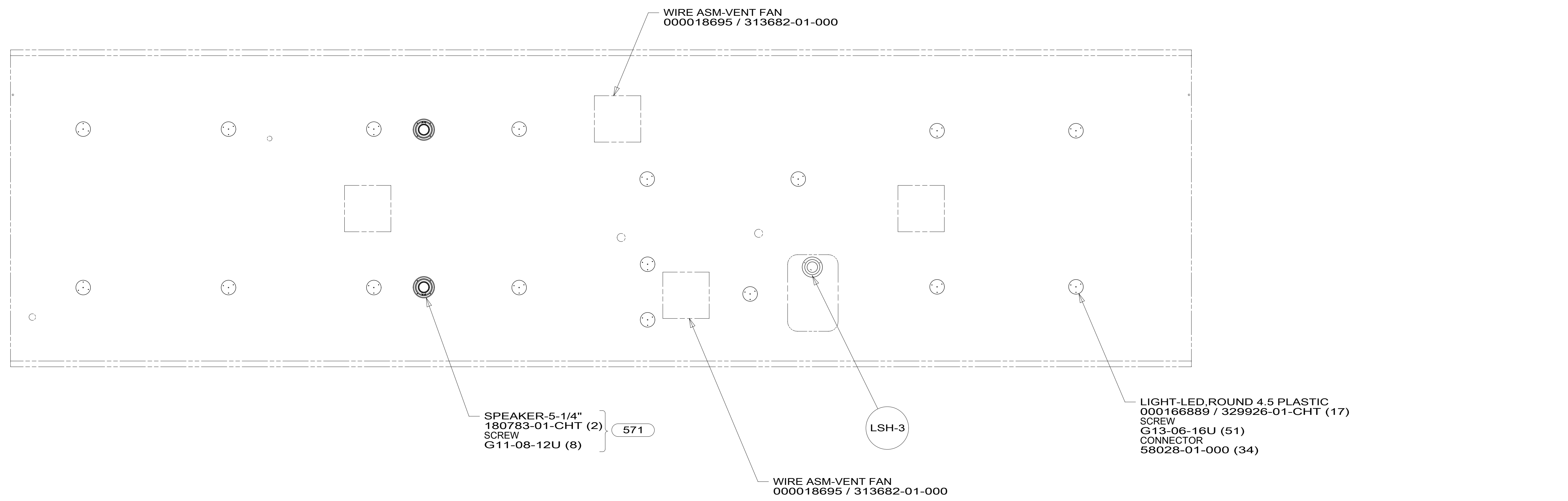
FOR ELECTRICAL CALLOUTS SEE DWG NO. 121339-01-000

- 265 CODES/STANDARDS-CSA/CMVSS
- 1B1 CODES/STANDARDS USA

DESCRIPTION: <b>WIRING INSTL-BODY, 12V</b>		
SHEET: <b>4 OF 8</b>	ITEM/PART NO.: <b>000166073 / 32961801000</b>	REV

8 7 6 5 4 3 2 1

D  
C  
B  
A



SPEAKER-5-1/4"  
 180783-01-CHT (2)  
 SCREW  
 G11-08-12U (8)

571

WIRE ASM-VENT FAN  
 000018695 / 313682-01-000

LSH-3

LIGHT-LED,ROUND 4.5 PLASTIC  
 000166889 / 329926-01-CHT (17)  
 SCREW  
 G13-06-16U (51)  
 CONNECTOR  
 58028-01-000 (34)

- 571 RADIO SPEAKERS
- 265 CODES/STANDARDS-CSA/CMVSS
- 1B1 CODES/STANDARDS USA

FOR ELECTRICAL  
 TORQUE  
 SPECIFICATIONS  
 SEE DWG NO.  
 128783-01-000

FOR  
 ELECTRICAL  
 CALLOUTS  
 SEE DWG NO.  
 121339-01-000

DESCRIPTION:	
<b>WIRING INSTL-BODY, 12V</b>	
SHEET:	ITEM/PART NO. REV
5 OF 8	000166073 / 32961801000

8

7

6

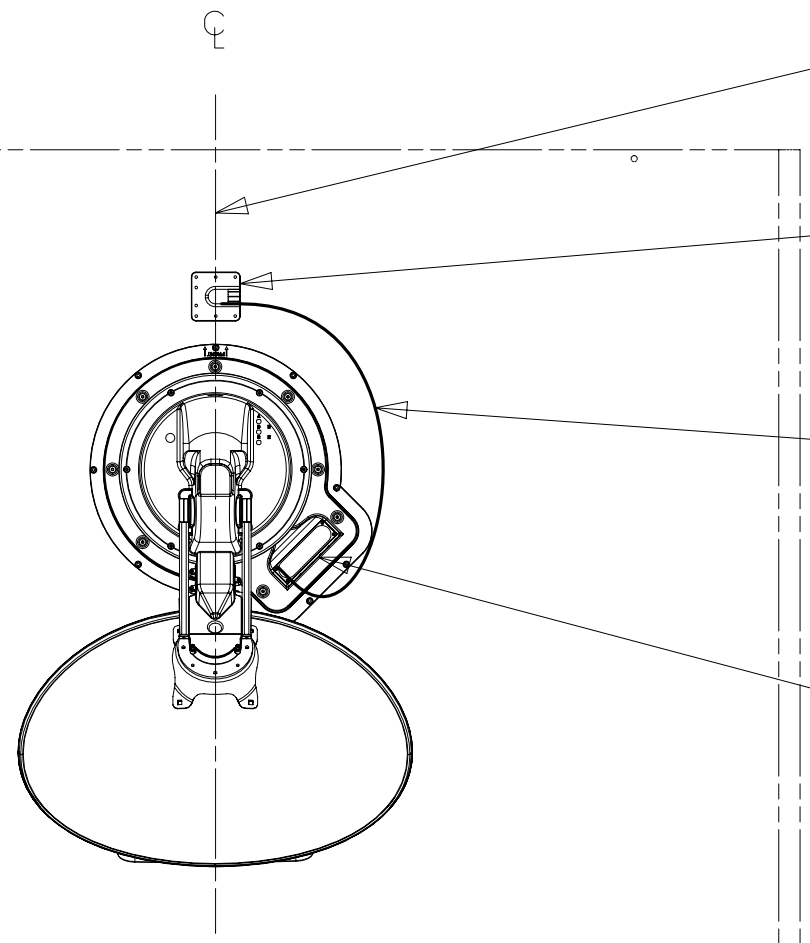
5

4

3

2

1



THE SATELLITE DISH AND WIRE CONNECTIONS ARE TO BE PLACED ON THE CENTERLINE OF THE MOTORHOME FACING FORWARD.

SEPARATE CABLES AND INSTALL WIRE COVER OVER HOLE IN ROOF ASM WITH CABLES EXITING ON PASSENGERS SIDE.

WHEN APPLYING ROOF SEALANT TO SATELLITE DISH, PLACE ROOF SEALANT HERE (APPROX. 75MM WIDE) AND PUSH THE CABLES INTO THE SEALANT TO STABILIZE THEM.

CONNECT CABLE ASM-COAX FROM ROOF ASM TO COAX CABLES ON SATELLITE DISH AND CONNECT 10' CABLE-DATA FROM ROOF ASM TO DATA CABLE FROM SATELLITE DISH AND PLACE ALL CONNECTIONS BACK INTO ROOF ASM.

DETAIL FA

ANTENNA-SATELLITE  
000169776 / 330860-01-000  
SCREW  
G39-08-12U (9)  
(FOR SATELLITE DISH)  
G67-10-12U (8)  
(FOR ENTRY PLATE SUPPLIED WITH DISH)

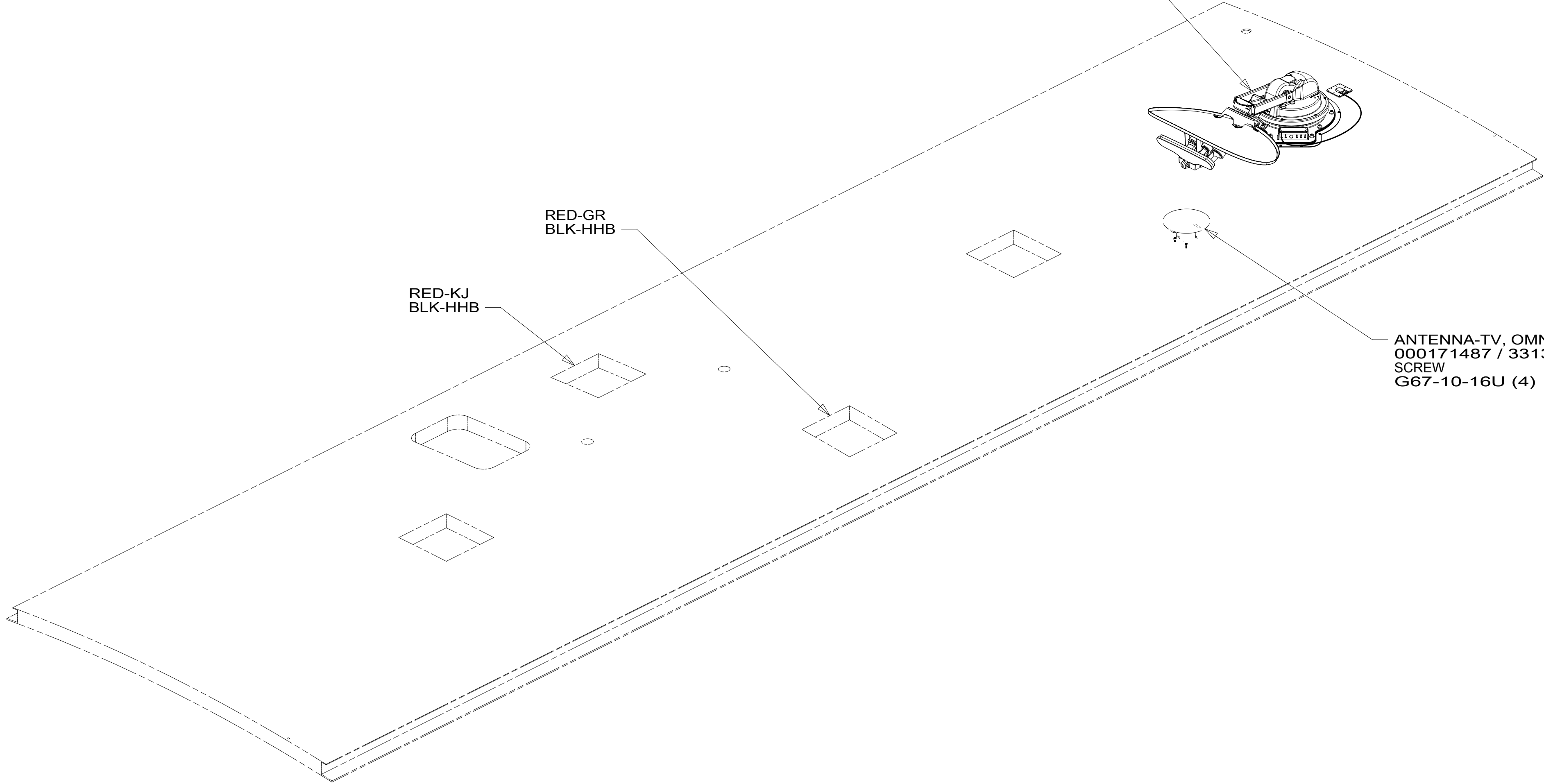
789

1

787

DA-4

DETAIL FA



RED-GR  
BLK-HHB

RED-KJ  
BLK-HHB

ANTENNA-TV, OMNIDIRECTIONAL  
000171487 / 331386-01-CHT  
SCREW  
G67-10-16U (4)

1

1 SEE MANUFACTURER'S INSTALLATION FOR ADDITIONAL INFORMATION.

NOTES:

FOR ELECTRICAL TORQUE SPECIFICATIONS SEE DWG NO. 128783-01-000

FOR ELECTRICAL CALLOUTS SEE DWG NO. 121339-01-000

- 789 SAT ANT, AUTO DISH NETWORK
- 787 SAT TV ANT, AUTO DIRECTV
- 265 CODES/STANDARDS-CSA/CMVSS
- 1B1 CODES/STANDARDS USA

DESCRIPTION:	
1B1 265	
WIRING INSTL-BODY, 12V	
SHEET:	ITEM/PART NO:
6 OF 8	000166073 / 32961801000
REV	

8

7

6

5

4

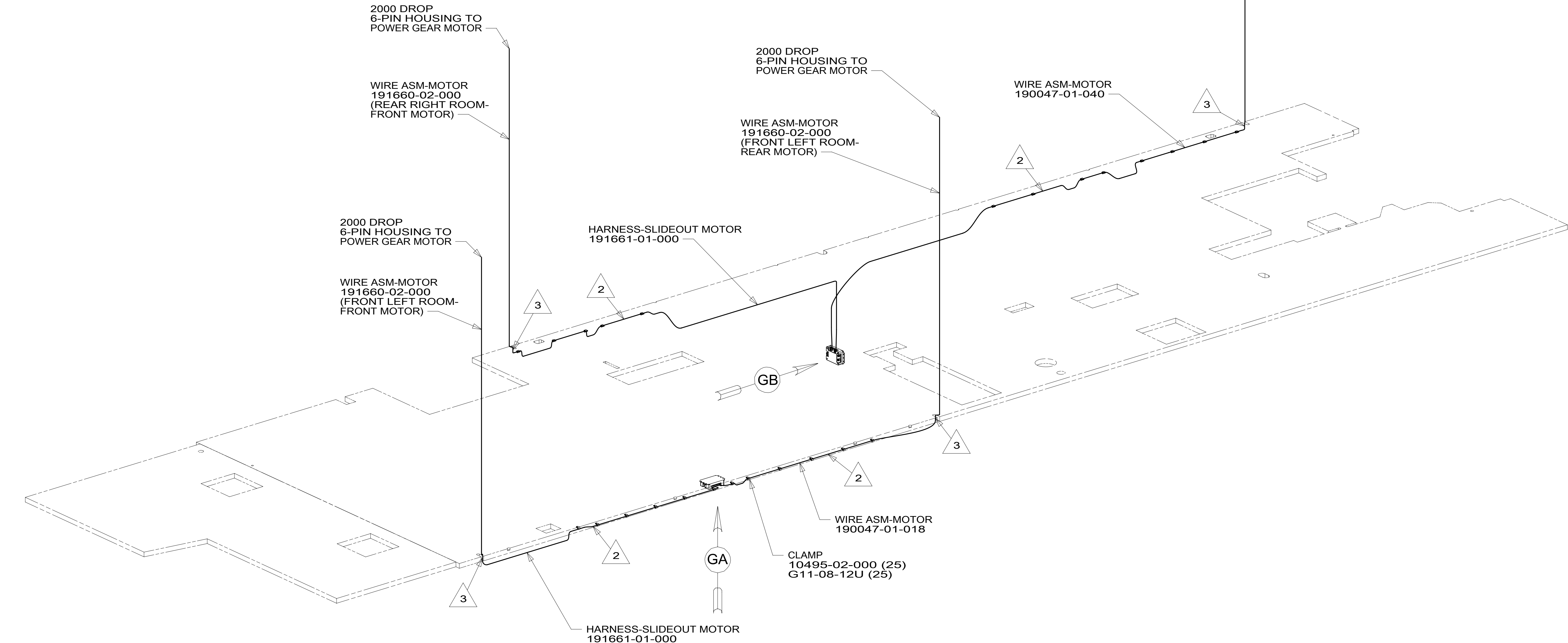
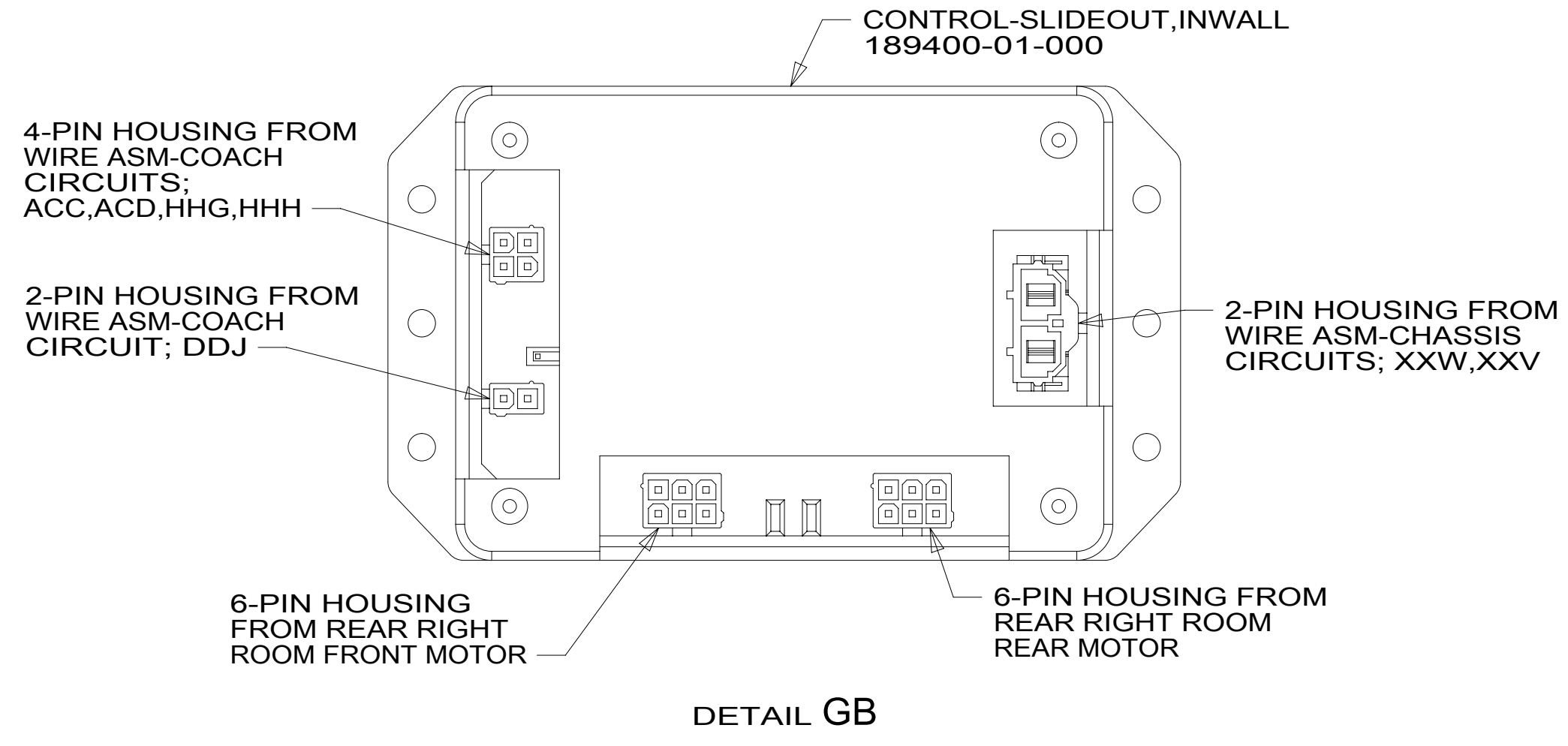
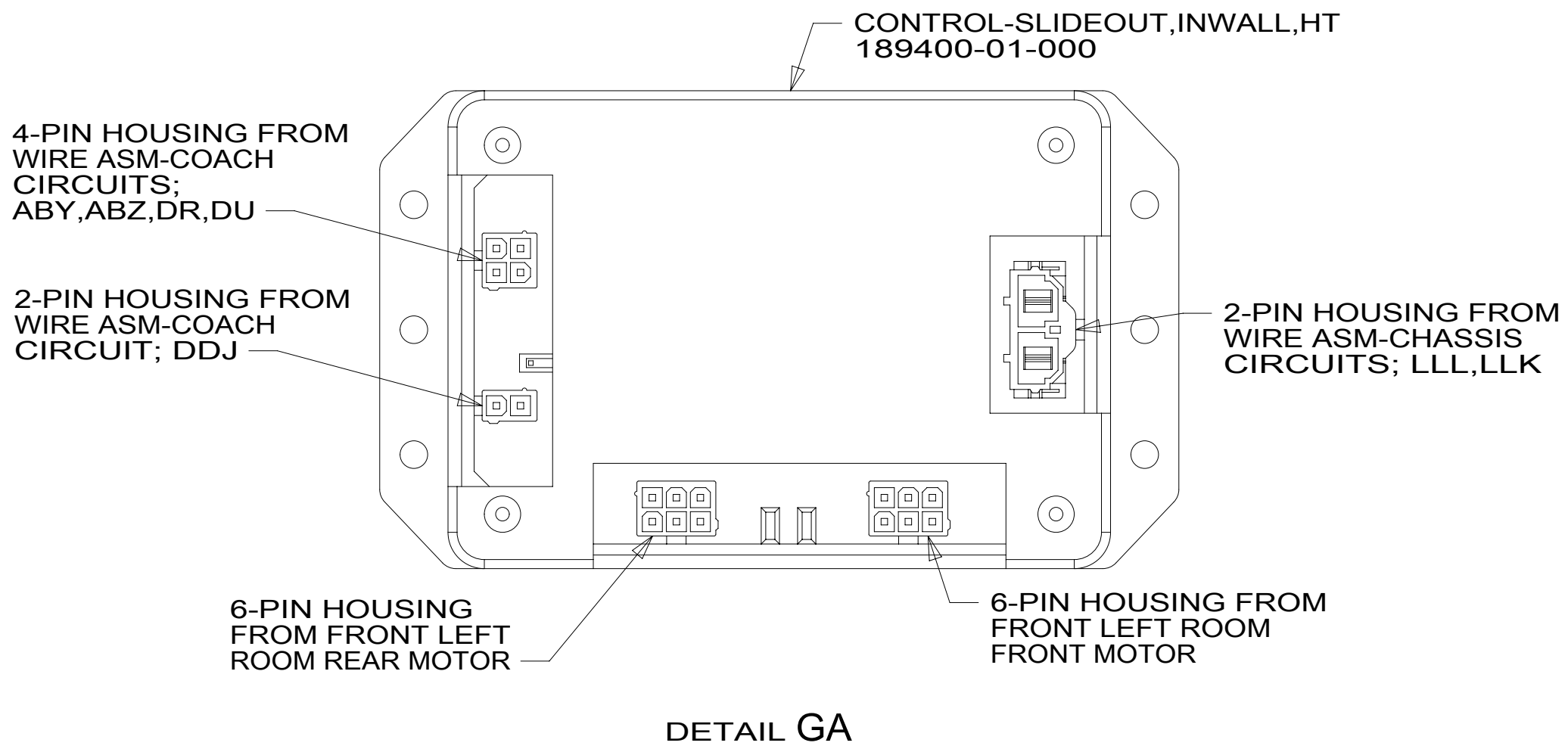
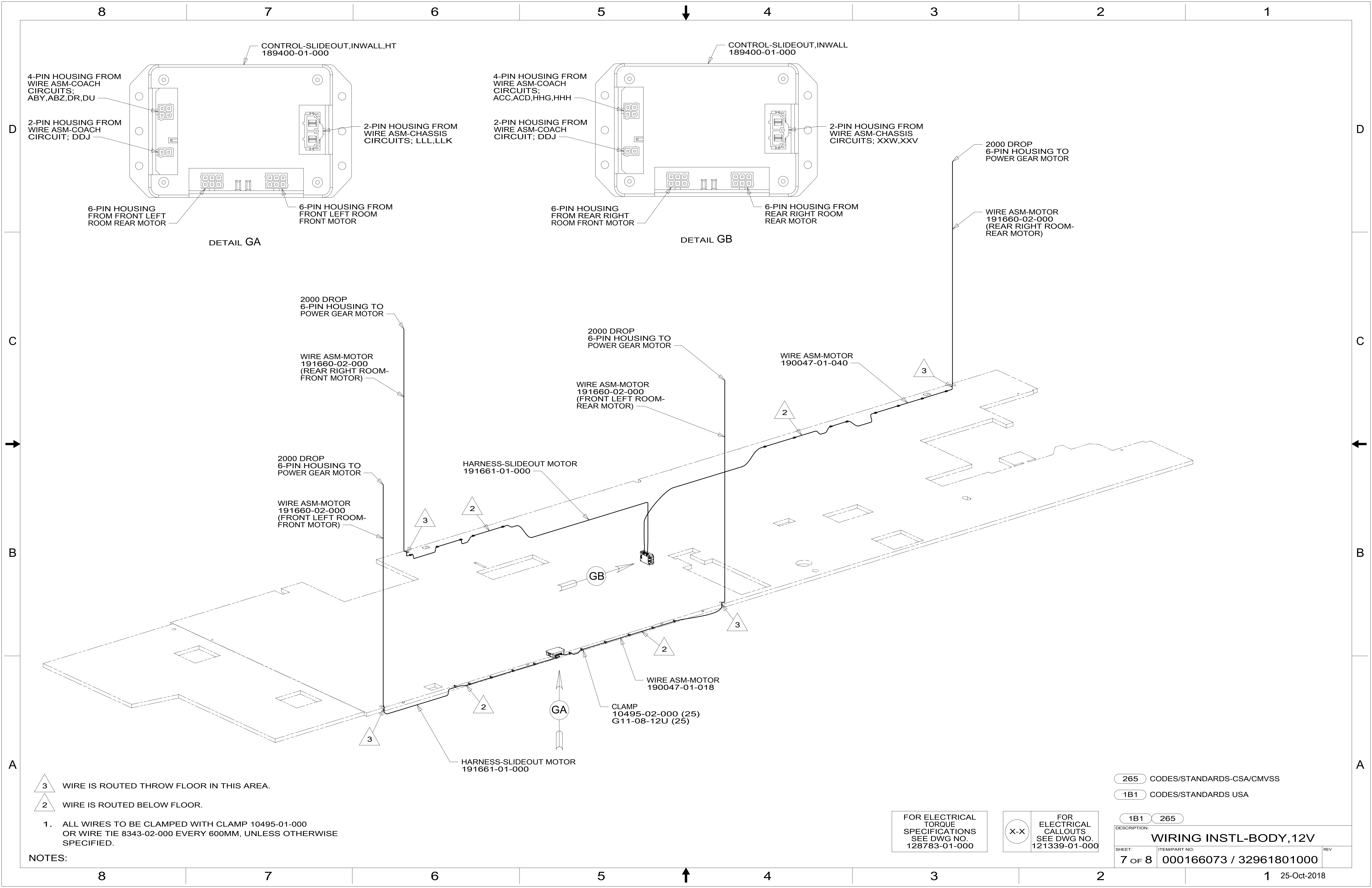
3

2

1

25-Oct-2018





- 3 WIRE IS ROUTED THROU FLOOR IN THIS AREA.
- 2 WIRE IS ROUTED BELOW FLOOR.

1. ALL WIRES TO BE CLAMPED WITH CLAMP 10495-01-000 OR WIRE TIE 8343-02-000 EVERY 600MM, UNLESS OTHERWISE SPECIFIED.

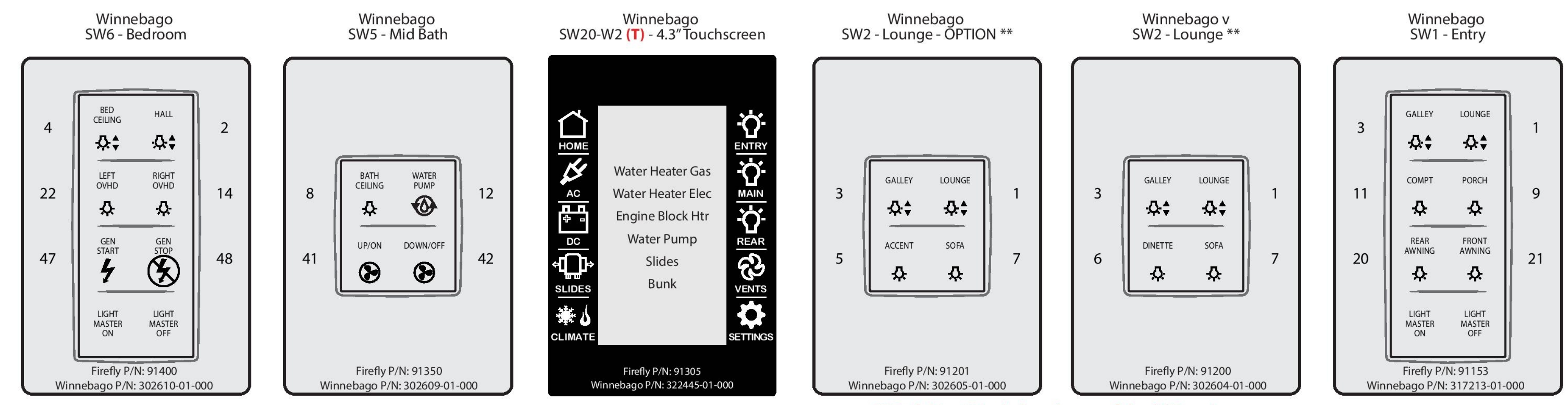
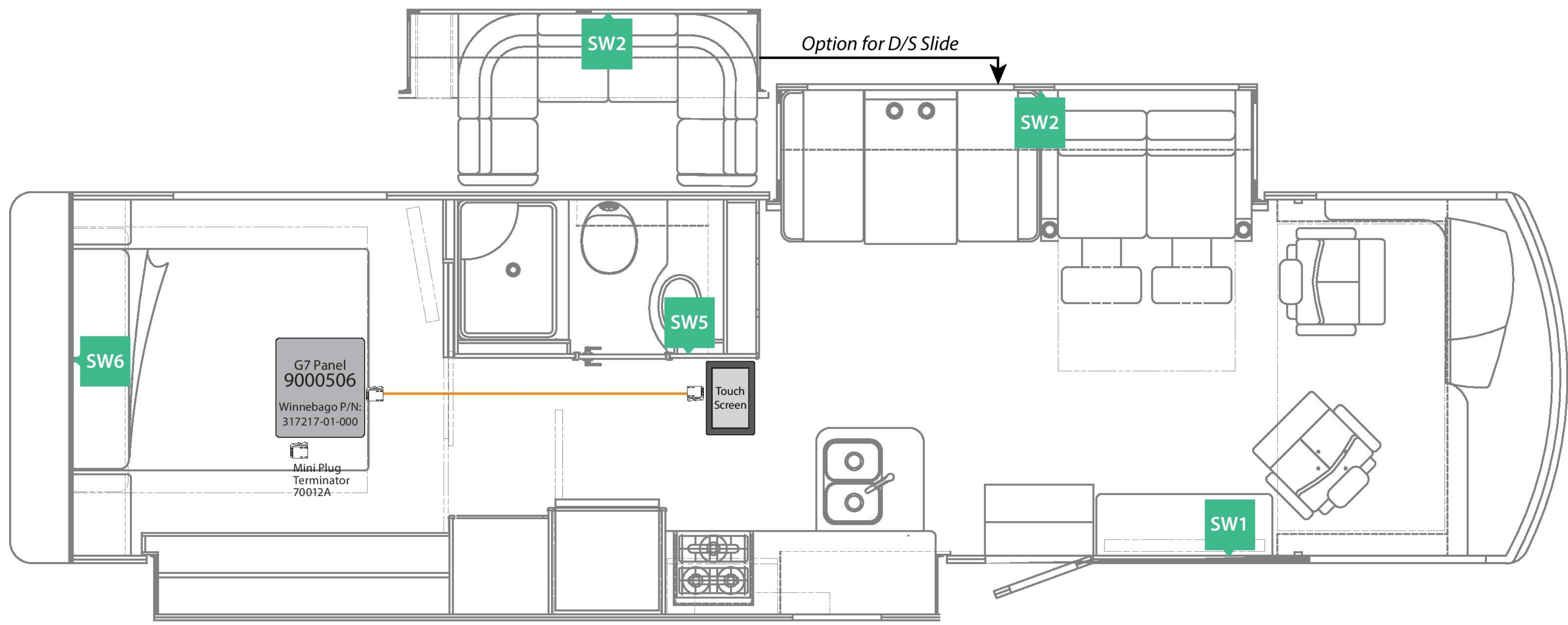
NOTES:

265 CODES/STANDARDS-CSA/CMVSS  
1B1 CODES/STANDARDS USA

FOR ELECTRICAL TORQUE SPECIFICATIONS SEE DWG NO. 128783-01-000

FOR ELECTRICAL CALLOUTS SEE DWG NO. 121339-01-000

DESCRIPTION:	1B1 265	
<b>WIRING INSTL-BODY, 12V</b>		
SHEET:	ITEM/PART NO:	REV
7 OF 8	000166073 / 32961801000	



\*\* Each kit will include only one of the SW2 options

L34T KIT\*: Firefly P/N: 90850AC  
 L34T Winnebago P/N: 322446-01-000  
 L34T OPTION KIT\*: Firefly P/N: 90850AF  
 L34T OPTION Winnebago P/N: 322447-01-000  
 \* Kits may not include all components shown on print.

<b>WINNEBAGO - L34T - V3</b>			DI: AD/MD	<b>Network Legend</b>	
Network Wiring Diagram and Switch Panel Layout			PI: AD/AA		
SSP-17 & 4.3" Screen (6v9)	Rev. 0v1	05/10/17		Trunk Cable	
				Drop Cable	
				Switch Position	

NOTES:  
 1. USE KIT # 000118589 / 322447-01-000.

FOR ELECTRICAL TORQUE SPECIFICATIONS SEE DWG NO. 128783-01-000

X-X

FOR ELECTRICAL CALLOUTS SEE DWG NO. 121339-01-000

265	CODES/STANDARDS-CSA/CMVSS
1B1	CODES/STANDARDS USA
1B1	265
DESCRIPTION: <b>WIRING INSTL-BODY, 12V</b>	
SHEET: 8 OF 8	ITEM/PART NO: 000166073 / 32961801000
REV	