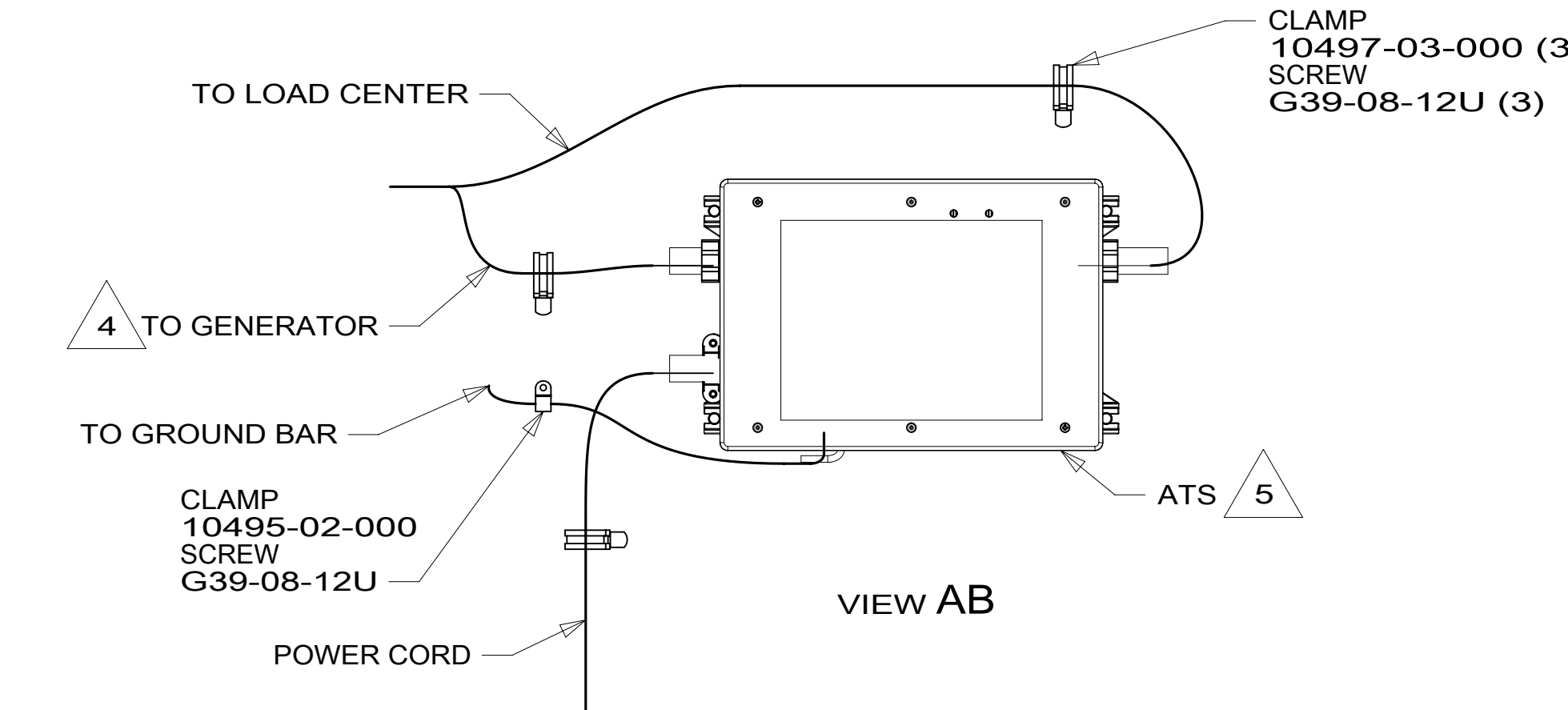


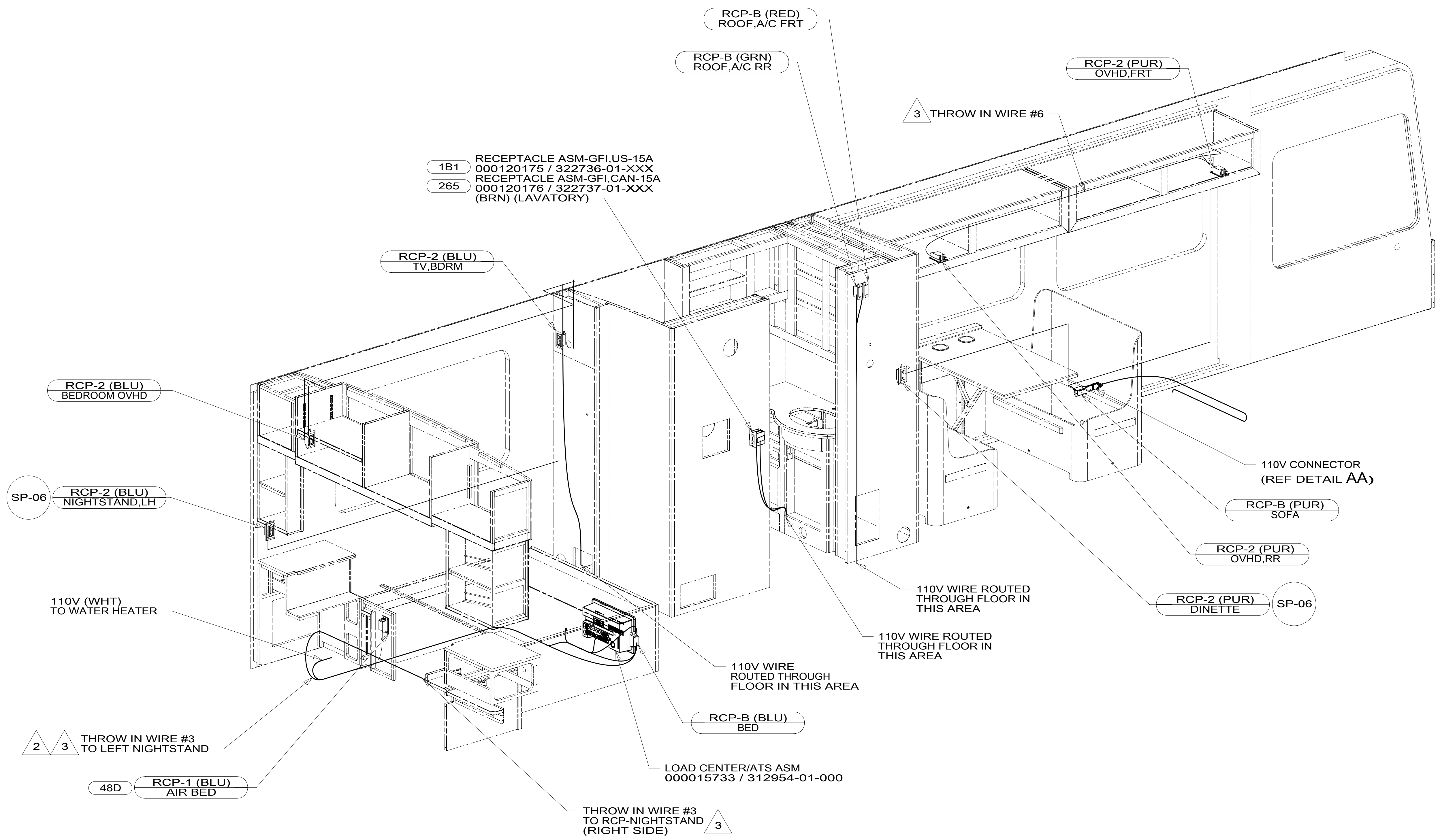
- NOTES:
- 6 ROUTE ENGINE HEATER POWER CORD THROUGH GROMMET.
  - 5 SEE LOAD CENTER/ATS ASM FOR ADDITIONAL INFORMATION.
  - 4 SEE GENERATOR INSTL FOR ADDITIONAL INFORMATION.
  - 3. WIRES THAT REST ON WIRE TRAYS ARE TO BE TIED DOWN WITH WIRE TIE 8343-04-000.
  - 2. CLAMP TO FLOOR SUPPORT TUBES AS NECESSARY WITH CLAMP 10497-01-000.
  - 1. AT MINIMUM ALL WIRES TO BE SUPPORTED AND SECURED PER CODE REQUIREMENTS. USE CLAMP 10495 OR 10497 OR WIRE TIE 8343 OR 108046 AND SCREW G67-XX-XXX OR G56-XX-XXX AS APPROPRIATE FOR INSTALLATION.



FOR ELECTRICAL TORQUE SPECIFICATIONS SEE DWG NO. 128783-01-000

FOR ELECTRICAL CALLOUTS SEE DWG NO. 121339-01-000

14C FIREPLACE-ELECTRIC	
78J ELECTRICAL SYSTEM-50 AMP	
265 CODES/STANDARDS-CSA/CMVSS	
1B1 CODES/STANDARDS USA	
1B1 265 78J	
<b>WINNEBAGO</b> COPYRIGHT 2016 WINNEBAGO INDUSTRIES, INC.	
DSNR:	ALL DIMENSIONS ARE IN MILLIMETERS
DIFFR:	
UNSPECIFIED TOLERANCES:	MATERIAL:
WHOLE DIM (X) ± 3	
ONE-PLACE (X.X) ± 1.5	
TWO-PLACE (X.XX) ± 0.50	
ANGLE ± 1°	
REFER TO ES0018 FOR FASTENER TIGHTENING GUIDELINES	WEIGHT: (LBS) FIRST USED: 19 L34T
<b>DESCRIPTION:</b> <b>WIRING INSTL-BODY, 110V</b>	
SHEET: 1 OF 6	ITEM/PART NO.: 000166071 / 32961701000
REF: 1	25-Mar-2019



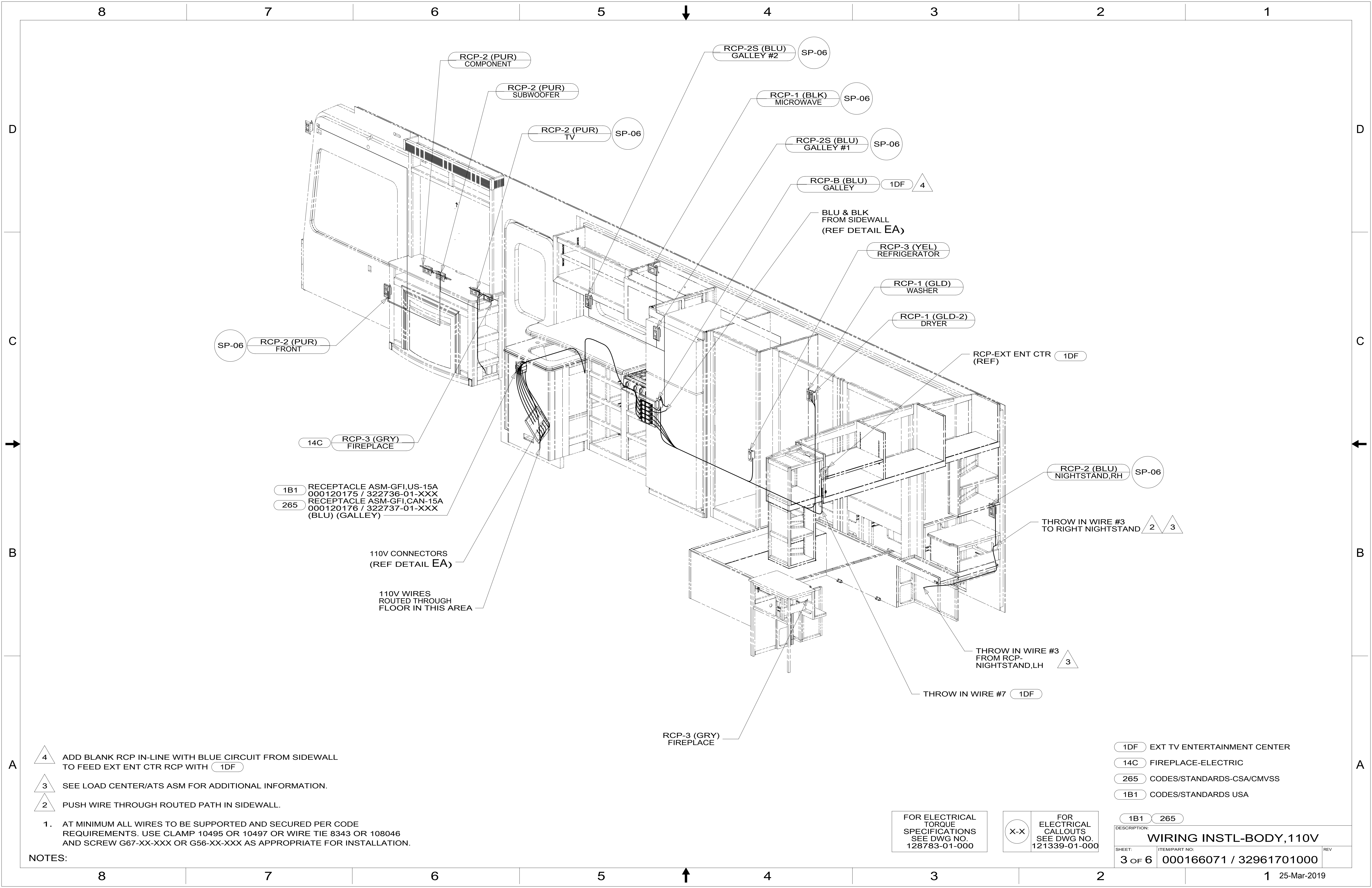
3 SEE LOAD CENTER/ATS ASM FOR ADDITIONAL INFORMATION.  
 2 PUSH WIRE THROUGH ROUTED PATH IN SIDEWALL.  
 1. AT MINIMUM ALL WIRES TO BE SUPPORTED AND SECURED PER CODE REQUIREMENTS. USE CLAMP 10495 OR 10497 OR WIRE TIE 8343 OR 108046 AND SCREW G67-XX-XXX OR G56-XX-XXX AS APPROPRIATE FOR INSTALLATION.

- 48D BED-QUEEN, AIR SLEEP SYSTEM
- 265 CODES/STANDARDS-CSA/CMVSS
- 1B1 CODES/STANDARDS USA

FOR ELECTRICAL TORQUE SPECIFICATIONS SEE DWG NO. 128783-01-000

X-X FOR ELECTRICAL CALLOUTS SEE DWG NO. 121339-01-000

DESCRIPTION: <b>WIRING INSTL-BODY, 110V</b>	
SHEET: 2 OF 6	ITEM/PART NO: 000166071 / 32961701000
REV	



1B1 RECEPTACLE ASM-GFI,US-15A  
000120175 / 322736-01-XXX  
265 RECEPTACLE ASM-GFI,CAN-15A  
000120176 / 322737-01-XXX  
(BLU) (GALLEY)

110V CONNECTORS  
(REF DETAIL EA)

110V WIRES  
ROUTED THROUGH  
FLOOR IN THIS AREA

4 ADD BLANK RCP IN-LINE WITH BLUE CIRCUIT FROM SIDEWALL  
TO FEED EXT ENT CTR RCP WITH 1DF

3 SEE LOAD CENTER/ATS ASM FOR ADDITIONAL INFORMATION.

2 PUSH WIRE THROUGH ROUTED PATH IN SIDEWALL.

1. AT MINIMUM ALL WIRES TO BE SUPPORTED AND SECURED PER CODE  
REQUIREMENTS. USE CLAMP 10495 OR 10497 OR WIRE TIE 8343 OR 108046  
AND SCREW G67-XX-XXX OR G56-XX-XXX AS APPROPRIATE FOR INSTALLATION.

NOTES:

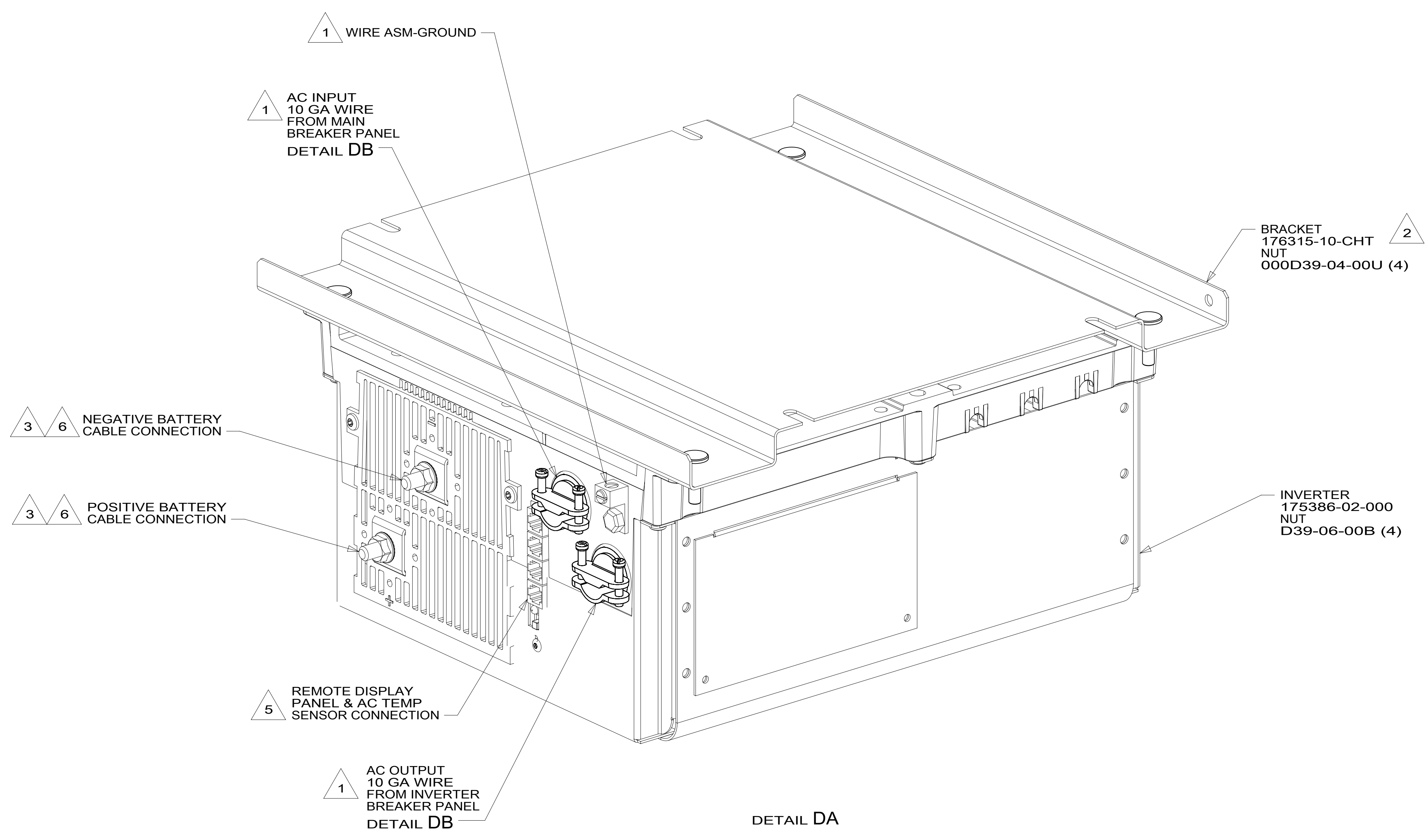
FOR ELECTRICAL  
TORQUE  
SPECIFICATIONS  
SEE DWG NO.  
128783-01-000

FOR ELECTRICAL  
CALLOUTS  
SEE DWG NO.  
121339-01-000

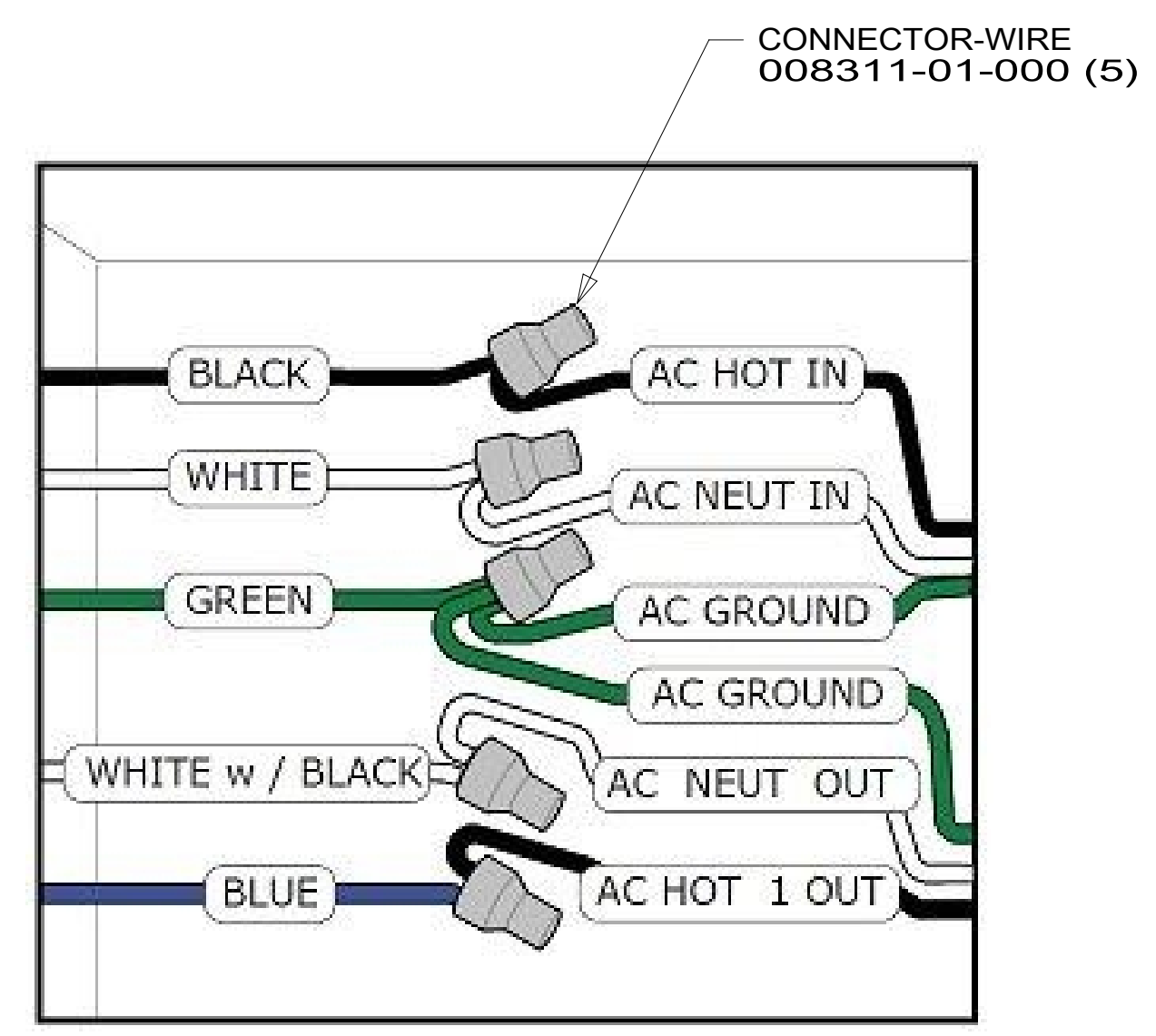
- 1DF EXT TV ENTERTAINMENT CENTER
- 14C FIREPLACE-ELECTRIC
- 265 CODES/STANDARDS-CSA/CMVSS
- 1B1 CODES/STANDARDS USA

DESCRIPTION:	
<b>WIRING INSTL-BODY, 110V</b>	
SHEET:	ITEM/PART NO:
3 OF 6	000166071 / 32961701000
REV	





DETAIL DA



DETAIL DB

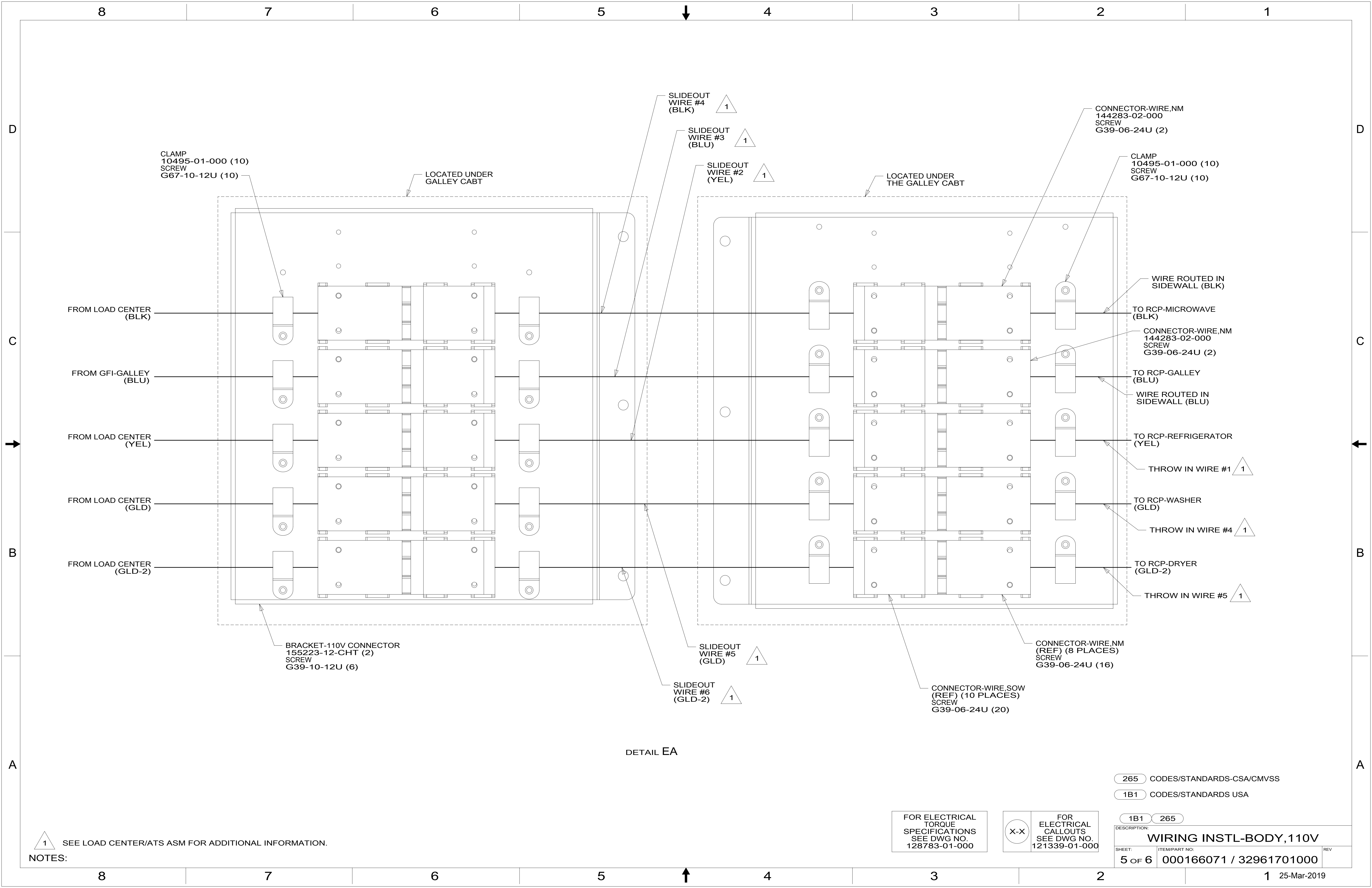
- NOTES:
- 6 DO NOT USE POWER/AIR TOOL TO INSTALL NUT. TORQUE TO 10-12 FT LBS.
  - 5 CABLES PART OF WIRE ASM-COACH.
  - 4 SEE INVERTER/CHARGER OWNER'S MANUAL FOR ADDITIONAL INFORMATION.
  - 3 SEE WIRING INSTL-CHASSIS FOR ADDITIONAL INFORMATION.
  - 2 BRACKET IS LOCATED BY HOLES ON BRACKET.
  - 1 SEE LOAD CENTER/ATS ASM FOR ADDITIONAL INFORMATION.

FOR ELECTRICAL TORQUE SPECIFICATIONS SEE DWG NO. 128783-01-000

FOR ELECTRICAL CALLOUTS SEE DWG NO. 121339-01-000

- 265 CODES/STANDARDS-CSA/CMVSS
- 1B1 CODES/STANDARDS USA

DESCRIPTION:		1B1 265	
<b>WIRING INSTL-BODY, 110V</b>			
SHEET:	ITEM/PART NO.:	REV:	
4 OF 6	000166071 / 32961701000		

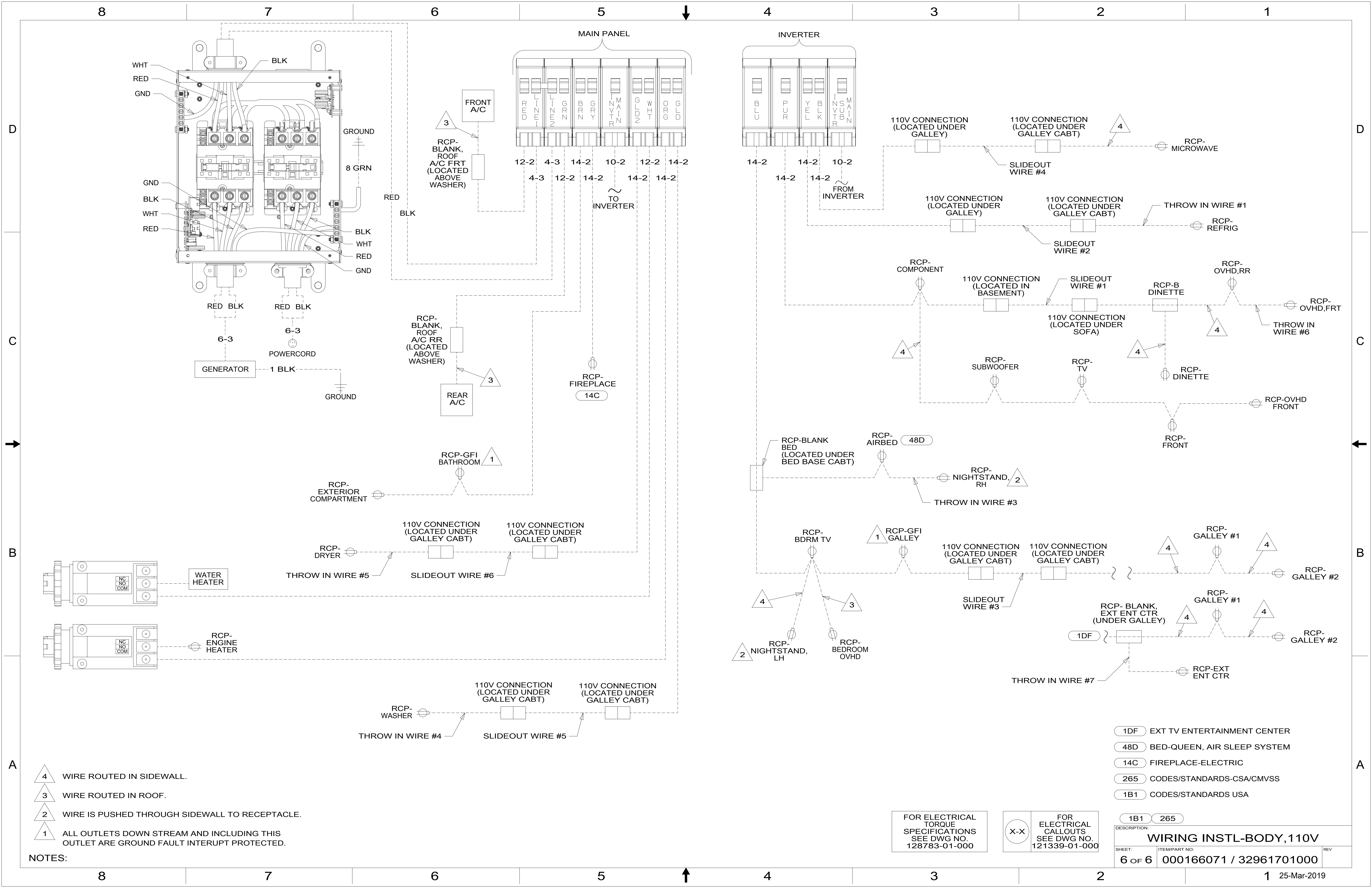


1 SEE LOAD CENTER/ATS ASM FOR ADDITIONAL INFORMATION.

FOR ELECTRICAL TORQUE SPECIFICATIONS SEE DWG NO. 128783-01-000

FOR ELECTRICAL CALLOUTS SEE DWG NO. 121339-01-000

265 CODES/STANDARDS-CSA/CMVSS	
1B1 CODES/STANDARDS USA	
1B1	265
DESCRIPTION: <b>WIRING INSTL-BODY, 110V</b>	
SHEET: 5 OF 6	ITEM/PART NO.: 000166071 / 32961701000
REV: 1 25-Mar-2019	



- NOTES:
- 4 WIRE ROUTED IN SIDEWALL.
  - 3 WIRE ROUTED IN ROOF.
  - 2 WIRE IS PUSHED THROUGH SIDEWALL TO RECEPTACLE.
  - 1 ALL OUTLETS DOWN STREAM AND INCLUDING THIS OUTLET ARE GROUND FAULT INTERRUPT PROTECTED.

FOR ELECTRICAL TORQUE SPECIFICATIONS SEE DWG NO. 128783-01-000

FOR ELECTRICAL CALLOUTS SEE DWG NO. 121339-01-000

- 1DF EXT TV ENTERTAINMENT CENTER
- 48D BED-QUEEN, AIR SLEEP SYSTEM
- 14C FIREPLACE-ELECTRIC
- 265 CODES/STANDARDS-CSA/CMVSS
- 1B1 CODES/STANDARDS USA

DESCRIPTION:		<b>WIRING INSTL-BODY, 110V</b>	
SHEET:	ITEM/PART NO.:	REV:	
6 OF 6	000166071 / 32961701000		