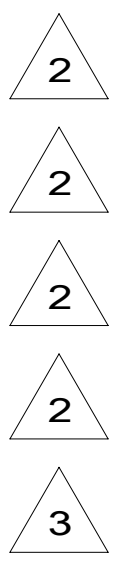


RED	1B1	136135-07-060
	265	136136-07-060
YEL	1B1	136131-05-046
	265	136134-05-046
BRN	1B1	136131-03-133
	265	136134-03-133
BLU	1B1	136131-02-227
	265	136134-02-227
MAIN	1B1	176841-01-080
	265	176841-01-080
GRN	1B1	136135-08-060
	265	136136-08-060
GRY	1B1	136131-15-050
	265	136134-15-050
PUR	1B1	136131-04-206
	265	136134-04-206
BLK	1B1	136131-06-060
	265	136134-06-060
WHT	1B1	136135-09-030
	265	136136-09-030
GLD	1B1	136131-10-118
	265	136134-10-118

THROW IN WIRE #1	1B1	136131-03-026	2
	265	136134-03-026	2
THROW IN WIRE #2	1B1	136131-04-015	2
	265	136134-04-015	2
SLIDEOUT WIRE #1		136151-04-014	3
GENERATOR CABLE ASM	1B1	136137-01-045 (2)	
	265	136138-01-045 (2)	
GROUND ATS		136145-01-048	
GROUND MAIN		136145-01-056	
INVERTER CHARGER MAIN	1B1	136137-01-052	
	265	136138-01-052	
INVERTER CHARGER SUB MAIN	1B1	136137-01-052	
	265	136138-01-052	



D

D

C

C

B

B

A

A

- 265 CODES/STANDARDS-CSA/CMVSS
- 1B1 CODES/STANDARDS USA
- 1B1 265

WINNEBAGO
 COPYRIGHT 2016 WINNEBAGO INDUSTRIES, INC.

DSNR:	ALL DIMENSIONS ARE IN MILLIMETERS
DFFR:	
UNSPECIFIED TOLERANCES:	MATERIAL:
WHOLE DIM (X) : 3	
ONE-PLACE (X.X) : 1.5	
TWO-PLACE (X.XX) : 0.50	
ANGLE : 1°	
REFER TO ES0018 FOR FASTENER TIGHTENING GUIDELINES	WEIGHT: (LBS) FIRST USED: 19 F35F
DESCRIPTION: LOAD CENTER/ATS ASM	
SHEET: 1 OF 3	ITEM/PART NO: 000164846 / 32927401000

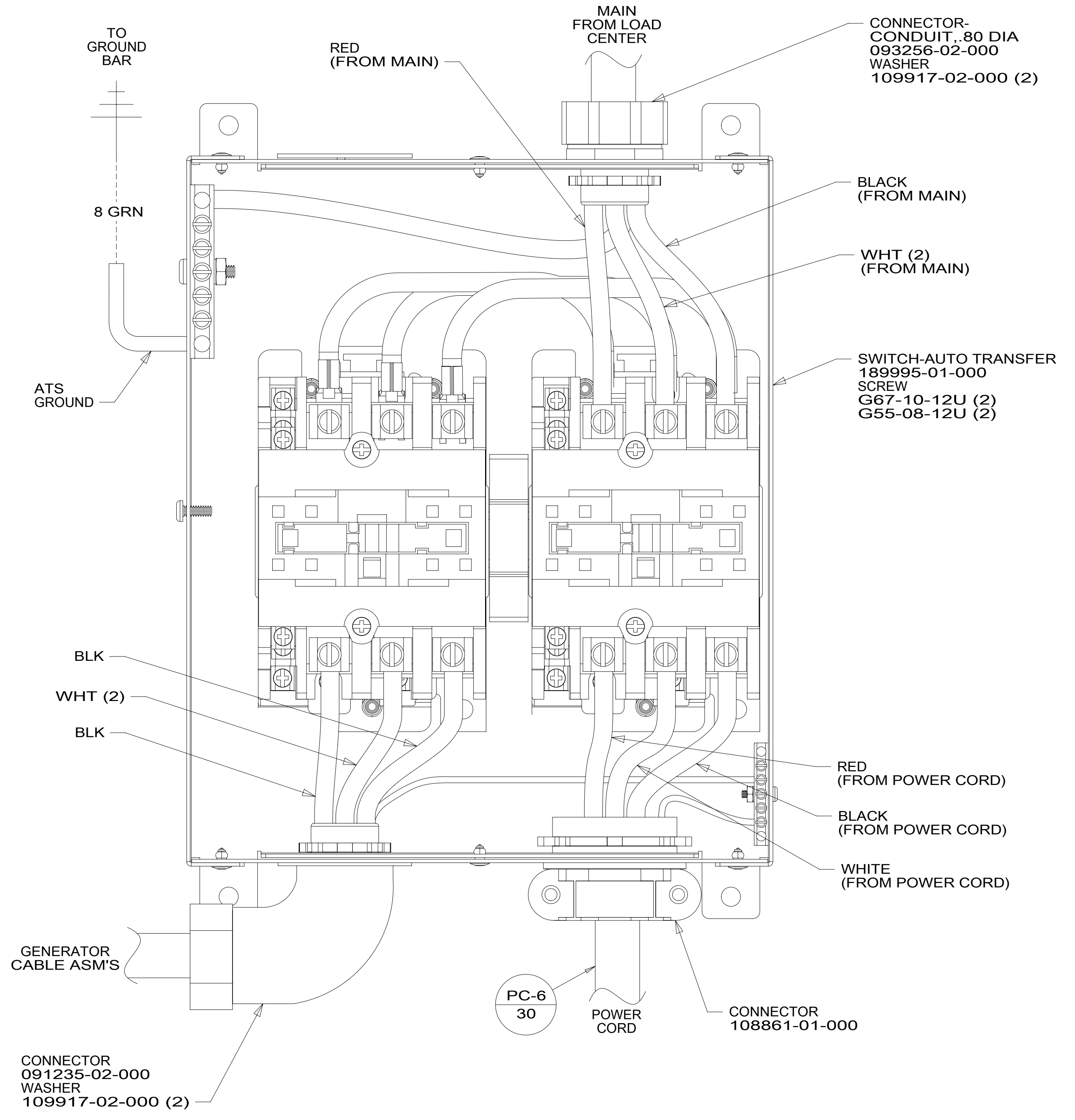
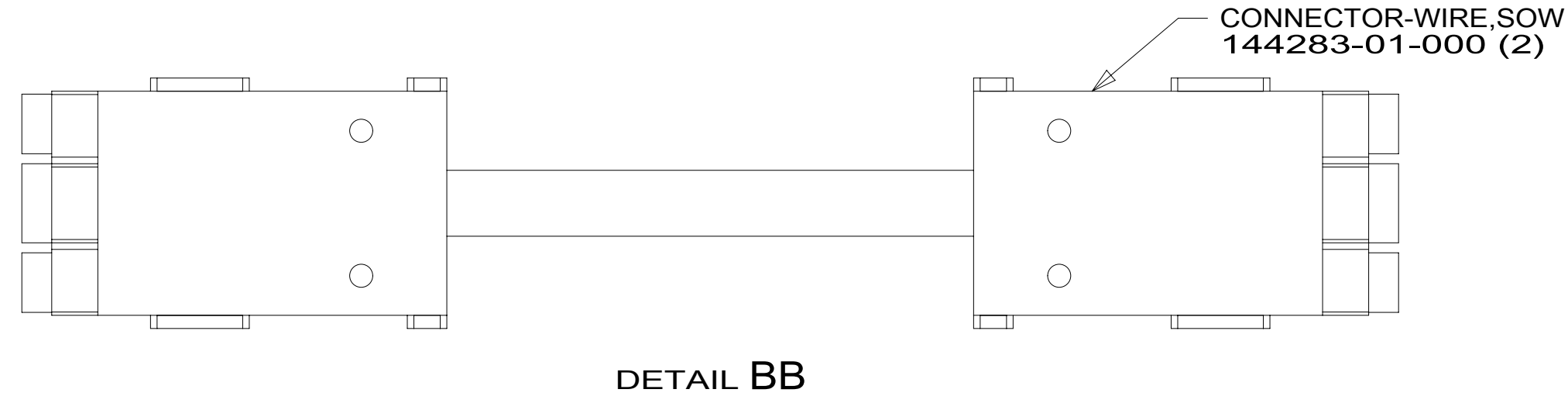
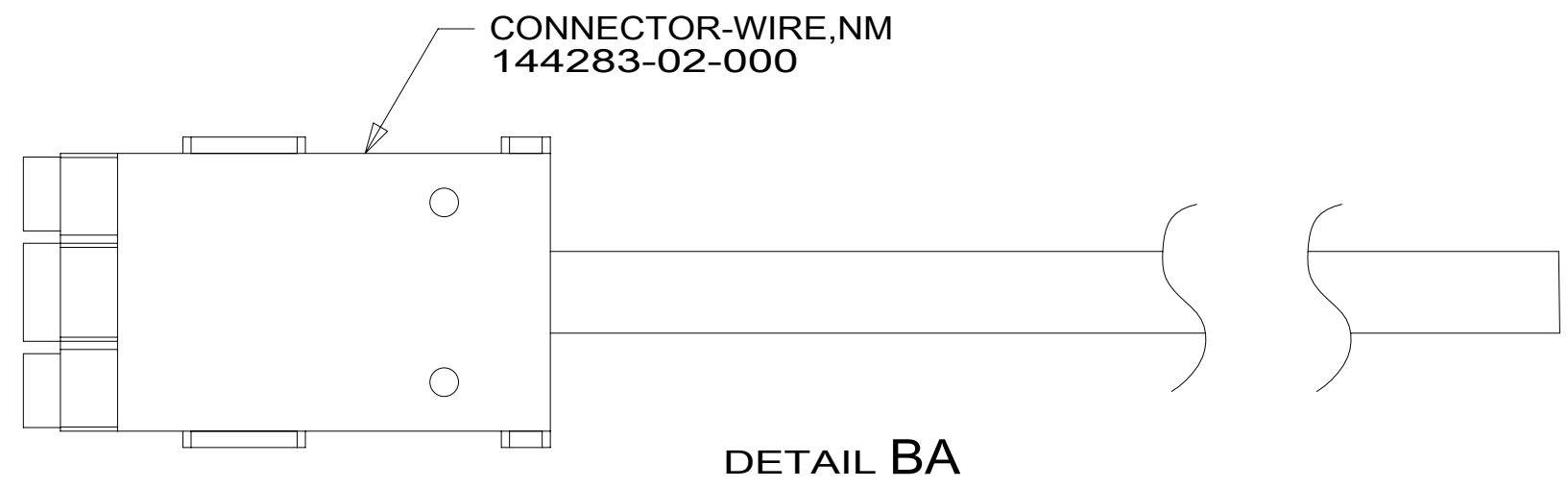
FOR ELECTRICAL TORQUE SPECIFICATIONS SEE DWG NO. 128783-01-000

FOR ELECTRICAL CALLOUTS SEE DWG NO. 121339-01-000

- 3 SEE DETAIL BB FOR CONNECTOR INSTALLATION.
- 2 SEE DETAIL BA FOR CONNECTOR INSTALLATION.
1. ALL GROUND WIRES TO BE COVERED WITH TUBING 8041-02-000.
- NOTES:

8 7 6 5 4 3 2 1

D
C
B
A



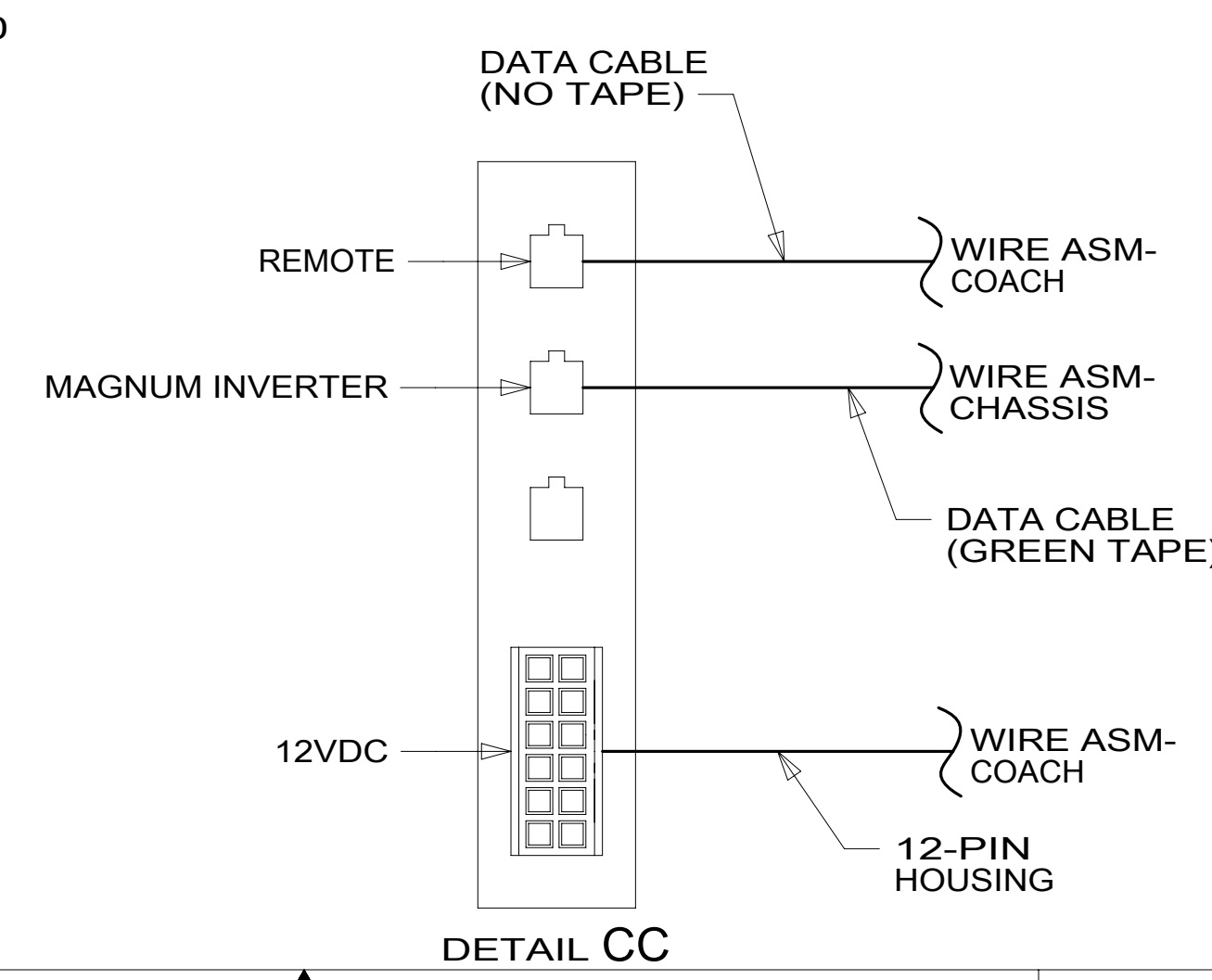
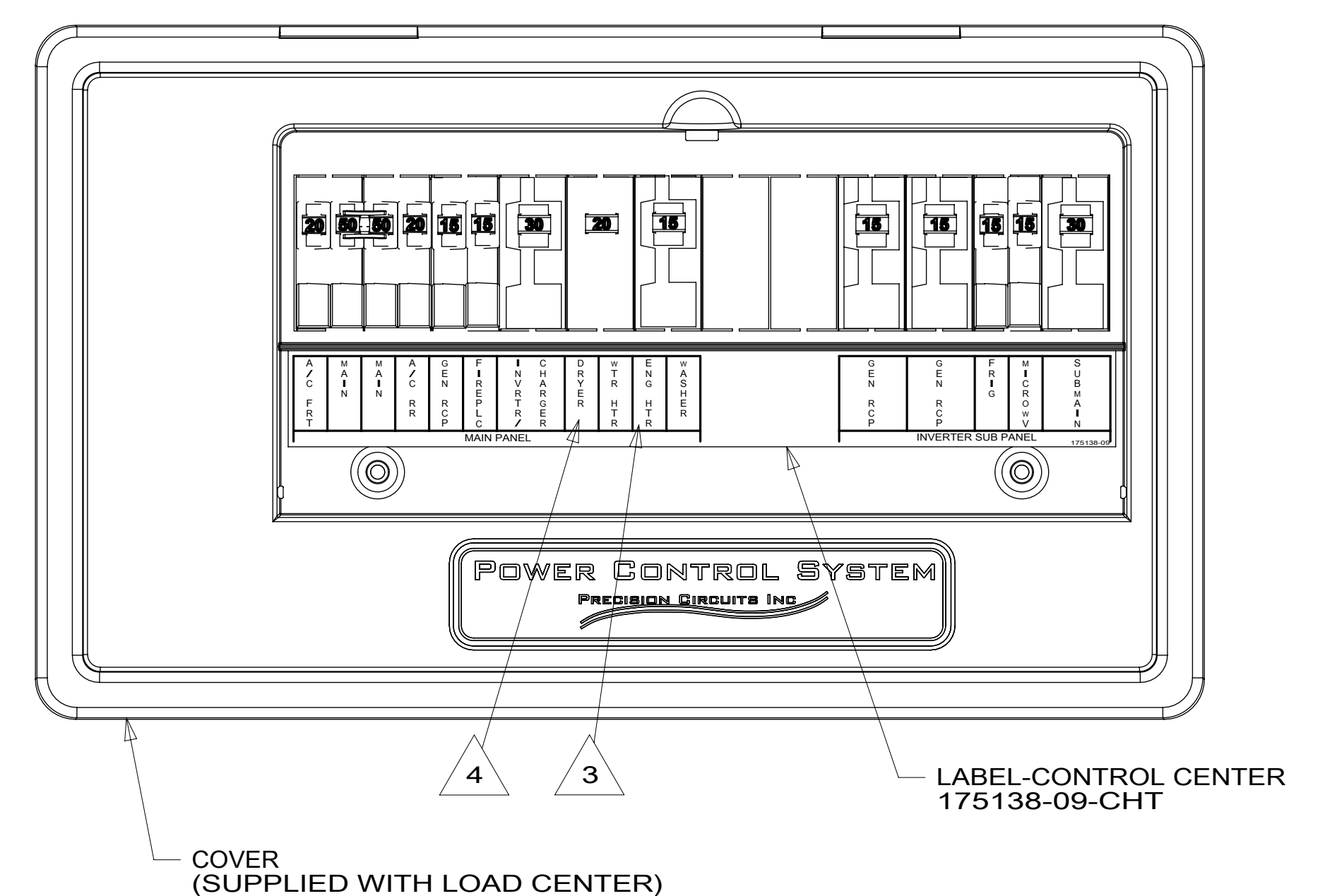
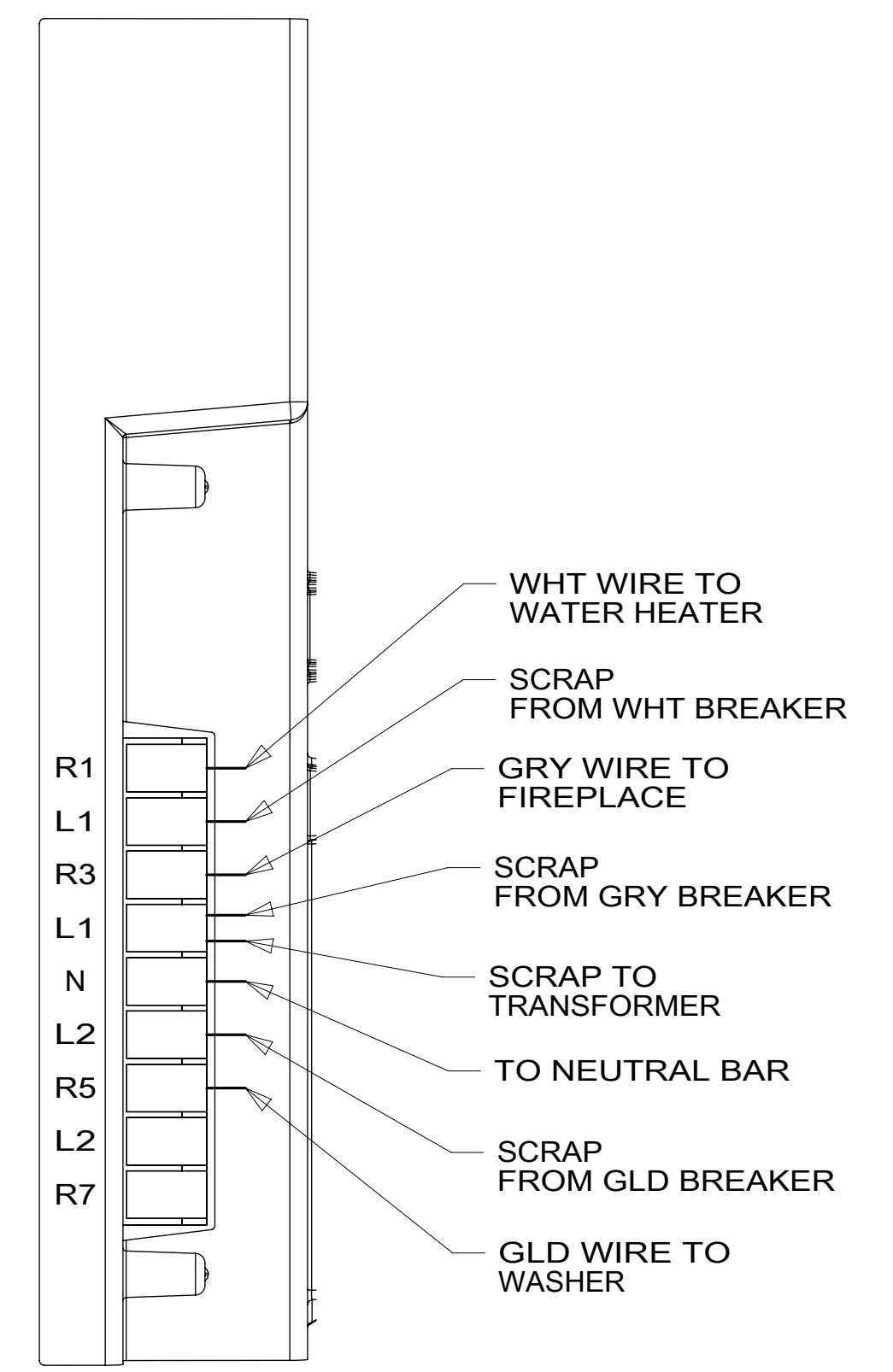
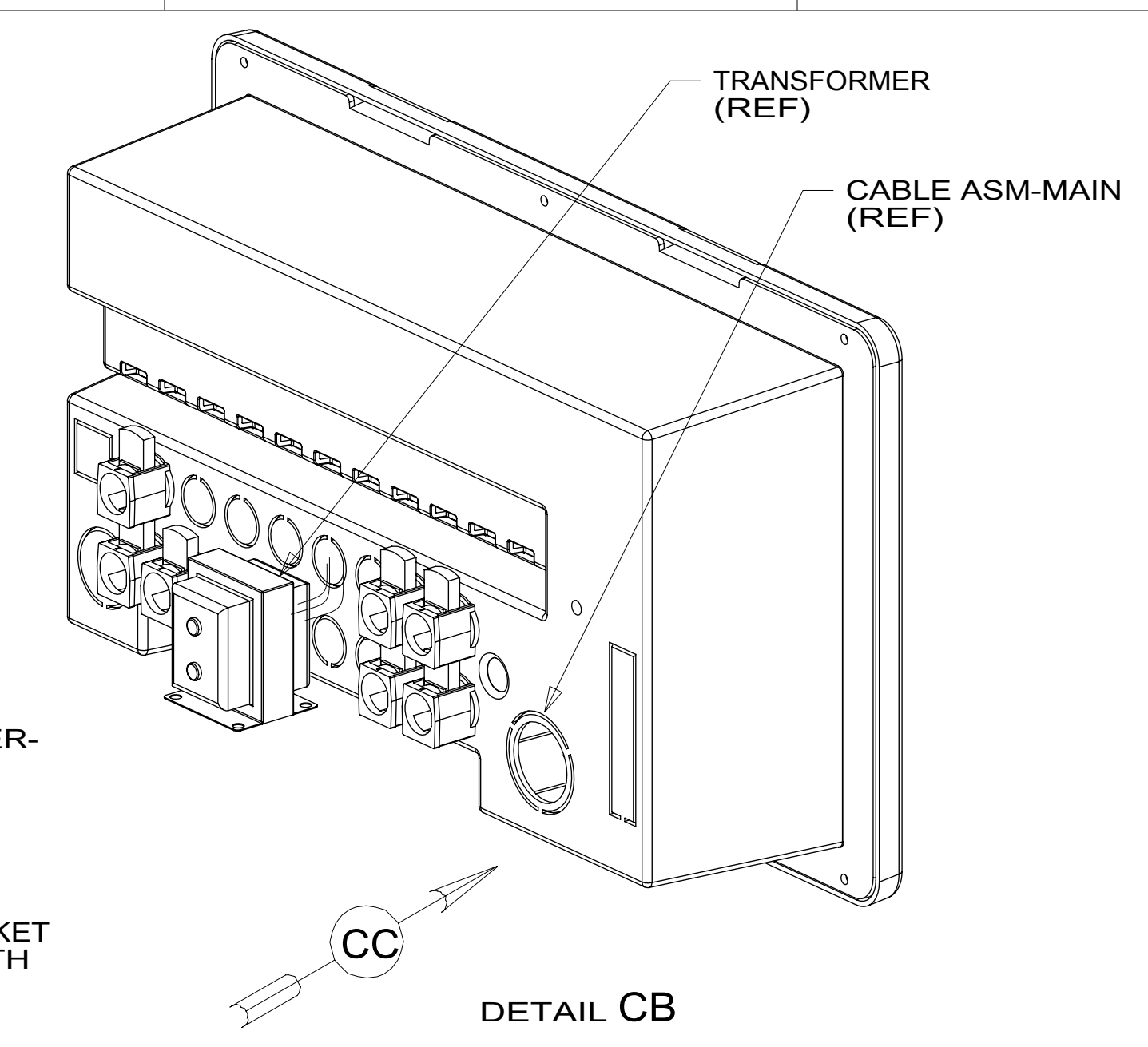
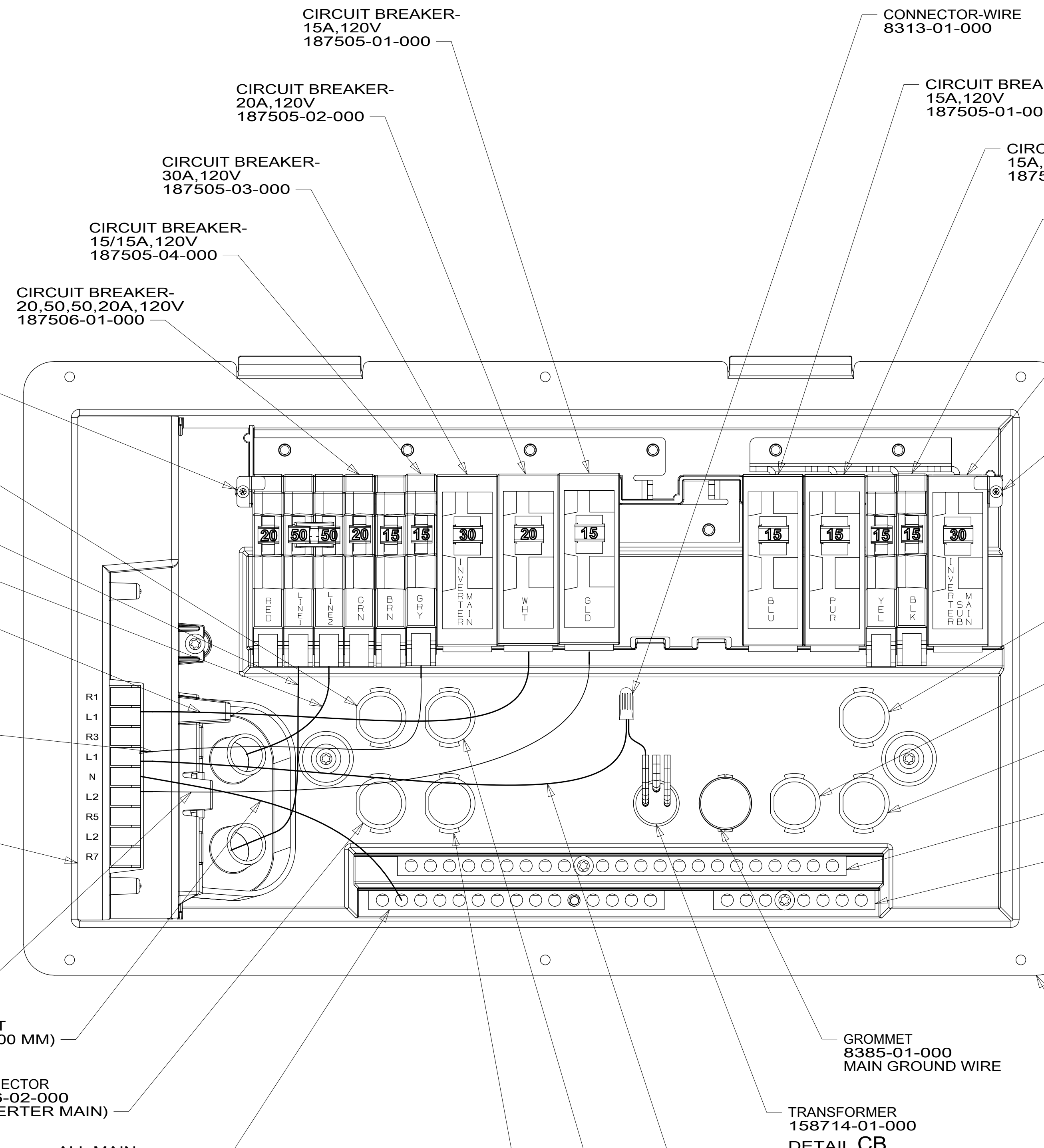
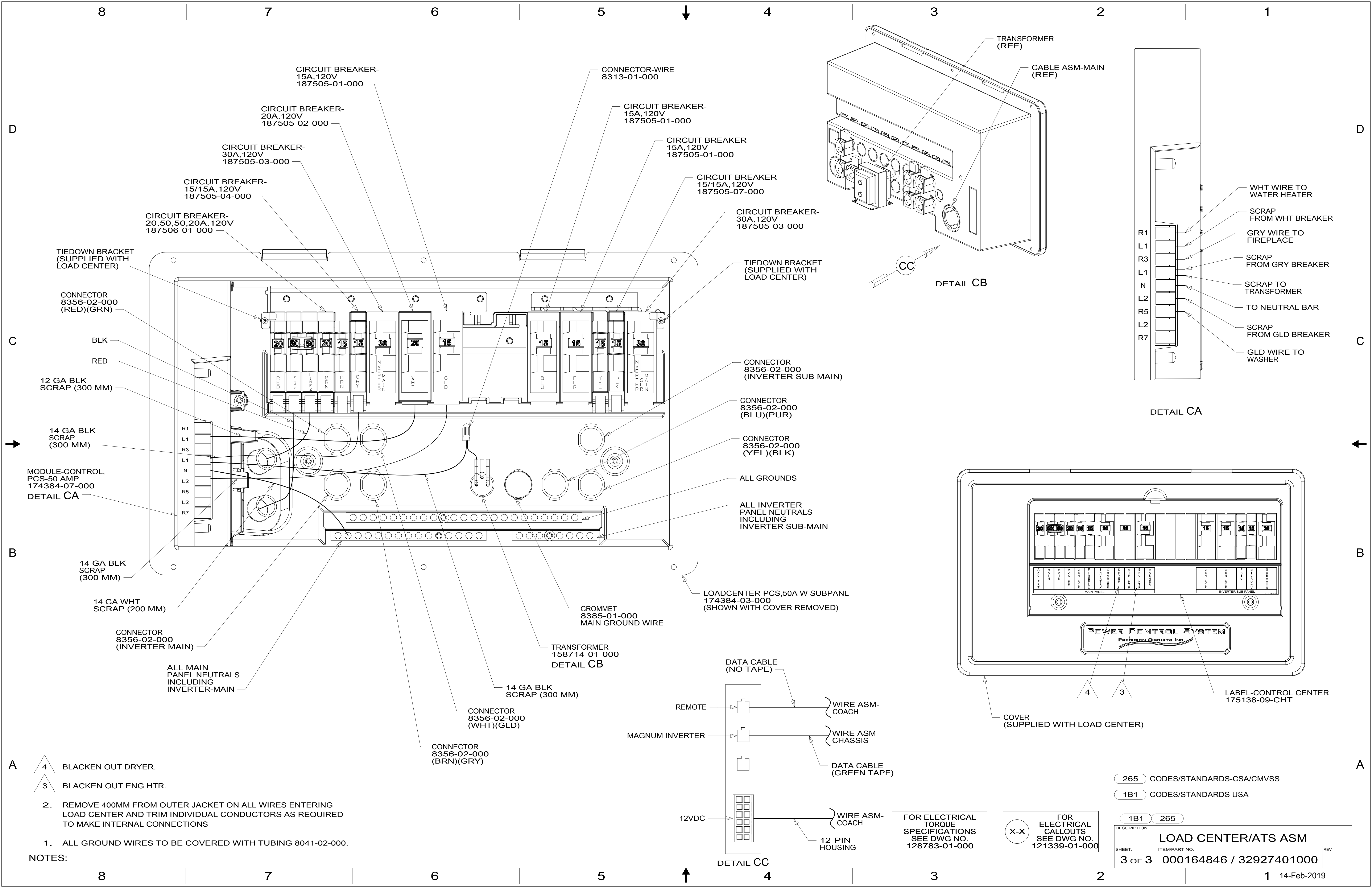
265 CODES/STANDARDS-CSA/CMVSS
1B1 CODES/STANDARDS USA

FOR ELECTRICAL TORQUE SPECIFICATIONS SEE DWG NO. 128783-01-000

FOR ELECTRICAL CALLOUTS SEE DWG NO. 121339-01-000

DESCRIPTION: LOAD CENTER/ATS ASM	
SHEET: 2 OF 3	ITEM/PART NO.: 000164846 / 32927401000
REV	

8 7 6 5 4 3 2 1 14-Feb-2019



- NOTES:**
- 4 BLACKEN OUT DRYER.
 - 3 BLACKEN OUT ENG HTR.
 - 2. REMOVE 400MM FROM OUTER JACKET ON ALL WIRES ENTERING LOAD CENTER AND TRIM INDIVIDUAL CONDUCTORS AS REQUIRED TO MAKE INTERNAL CONNECTIONS
 - 1. ALL GROUND WIRES TO BE COVERED WITH TUBING 8041-02-000.

FOR ELECTRICAL TORQUE SPECIFICATIONS SEE DWG NO. 128783-01-000

FOR ELECTRICAL CALLOUTS SEE DWG NO. 121339-01-000

265 CODES/STANDARDS-CSA/CMVSS
1B1 CODES/STANDARDS USA

DESCRIPTION:	LOAD CENTER/ATS ASM	
SHEET:	ITEM/PART NO.:	REV:
3 OF 3	000164846 / 32927401000	