

CABLE ASM-CHASSIS GND EXT (BLK)	133566-12-010
CABLE ASM-CHASSIS BATTERY DISCONNECT SUPPLY (RED)	141415-32-026
CABLE ASM-COACH BATTERY DISCONNECT SUPPLY (YEL)	141416-52-037
CABLE ASM-COACH BATTERY GND (BLK)	133567-12-008
CABLE ASM-CHASSIS BATTERY DISCONNECT RETURN (PUR)	141415-12-025
CABLE ASM-GENERATOR (GRN)	141415-42-099
LEVELING SYSTEM POWER CABLE (BLU)	141415-29-010
LEVELING SYSTEM GND CABLE (BLK)	133566-12-008
CABLE ASM-STARTER (RED)	141416-32-012
CABLE ASM (ORG) FROM COACH BATTERY TO INVERTER FUSE	175207-62-005
CABLE ASM (ORG) FROM INVERTER FUSE TO INVERTER BATTERY DISCONNECT	175207-62-016
CABLE ASM (ORG) FROM BATTERY DISCONNECT TO POSITIVE POST ON INVERTER	175207-62-006
CABLE ASM (BLK) FROM COACH BATTERY TO INVERTER NEGATIVE TERMINAL	175211-02-018
CABLE ASM (YEL) JUMPER BETWEEN POSITIVE POSTS ON COACH BATTERY	141417-52-004
CABLE ASM (YEL) JUMPER BETWEEN POSITIVE POSTS ON COACH BATTERY	141417-51-002 (2)
CABLE ASM (BLK) JUMPER BETWEEN NEGATIVE POSTS ON COACH BATTERY	133568-12-004
CABLE ASM (BLK) JUMPER BETWEEN NEGATIVE POSTS ON COACH BATTERY	133568-11-002 (2)
CABLE ASM-INVERTER GROUND (GRN)	136145-01-018
CABLE ASM-COACH BATTERY FUSE	141416-52-005
CABLE ASM-CHASSIS BATTERY FUSE	141415-32-003

15L

15L

15L RESIDENTIAL REFRIGERATOR PKG

265 CODES/STANDARDS-CSA/CMVSS

1B1 CODES/STANDARDS USA

1B1 265



DSNR:		ALL DIMENSIONS ARE IN MILLIMETERS	
DIFFR:		MATERIAL:	
UNSPECIFIED TOLERANCES:			
WHOLE DIM (X)	: 3		
ONE-PLACE (X.X)	: 1.5		
TWO-PLACE (X.XX)	: 0.50		
ANGLE	: 1°		

REFER TO ES0018 FOR FASTENER TIGHTENING GUIDELINES

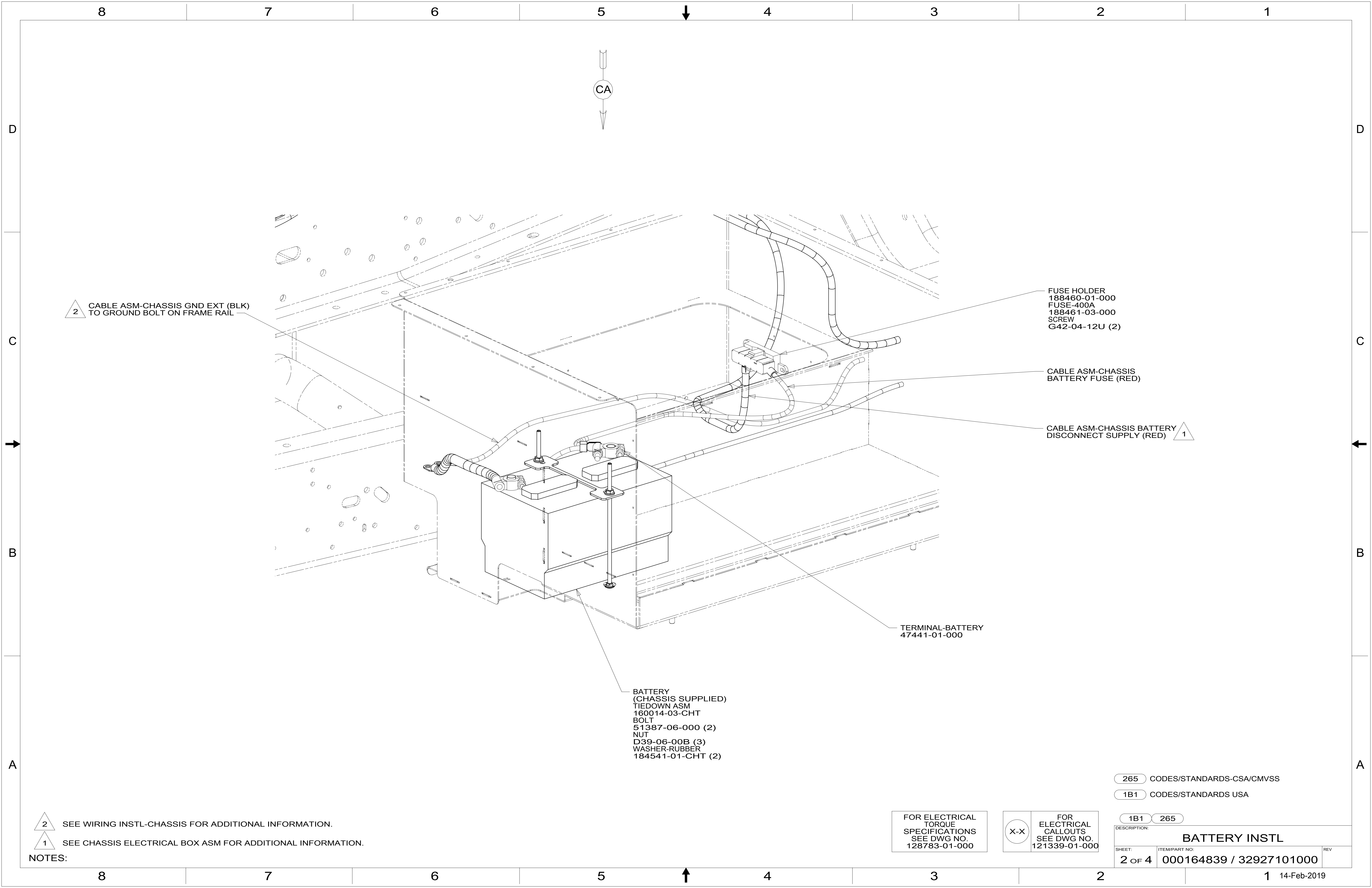
WEIGHT: (LBS) FIRST USED: 19 F35F

**BATTERY INSTL**

SHEET:	ITEM/PART NO:	REV
1 OF 4	000164839 / 32927101000	

FOR ELECTRICAL TORQUE SPECIFICATIONS SEE DWG NO. 128783-01-000

FOR ELECTRICAL CALLOUTS SEE DWG NO. 121339-01-000



CA

2 CABLE ASM-CHASSIS GND EXT (BLK)  
TO GROUND BOLT ON FRAME RAIL

FUSE HOLDER  
188460-01-000  
FUSE-400A  
188461-03-000  
SCREW  
G42-04-12U (2)

CABLE ASM-CHASSIS  
BATTERY FUSE (RED)

CABLE ASM-CHASSIS BATTERY  
DISCONNECT SUPPLY (RED) 1

TERMINAL-BATTERY  
47441-01-000

BATTERY  
(CHASSIS SUPPLIED)  
TIEDOWN ASM  
160014-03-CHT  
BOLT  
51387-06-000 (2)  
NUT  
D39-06-00B (3)  
WASHER-RUBBER  
184541-01-CHT (2)

2 SEE WIRING INSTL-CHASSIS FOR ADDITIONAL INFORMATION.  
1 SEE CHASSIS ELECTRICAL BOX ASM FOR ADDITIONAL INFORMATION.

NOTES:

265 CODES/STANDARDS-CSA/CMVSS

1B1 CODES/STANDARDS USA

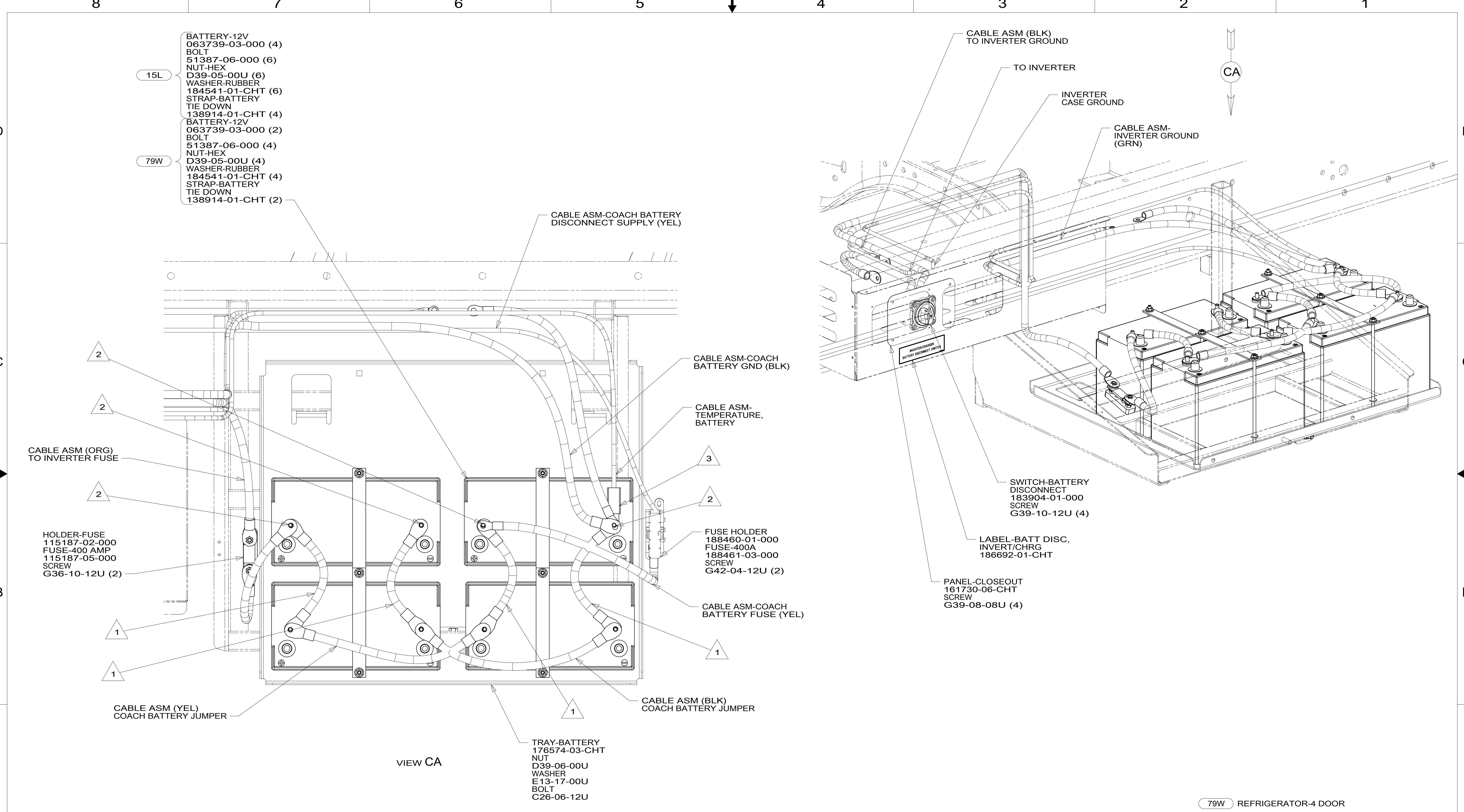
1B1 265

FOR ELECTRICAL  
TORQUE  
SPECIFICATIONS  
SEE DWG NO.  
128783-01-000

X-X FOR  
ELECTRICAL  
CALLOUTS  
SEE DWG NO.  
121339-01-000

DESCRIPTION: <b>BATTERY INSTL</b>		
SHEET: 2 OF 4	ITEM/PART NO: 000164839 / 32927101000	REV

- 15L BATTERY-12V  
063739-03-000 (4)  
BOLT  
51387-06-000 (6)  
NUT-HEX  
D39-05-00U (6)  
WASHER-RUBBER  
184541-01-CHT (6)  
STRAP-BATTERY  
TIE DOWN  
138914-01-CHT (4)
- 79W BATTERY-12V  
063739-03-000 (2)  
BOLT  
51387-06-000 (4)  
NUT-HEX  
D39-05-00U (4)  
WASHER-RUBBER  
184541-01-CHT (4)  
STRAP-BATTERY  
TIE DOWN  
138914-01-CHT (2)



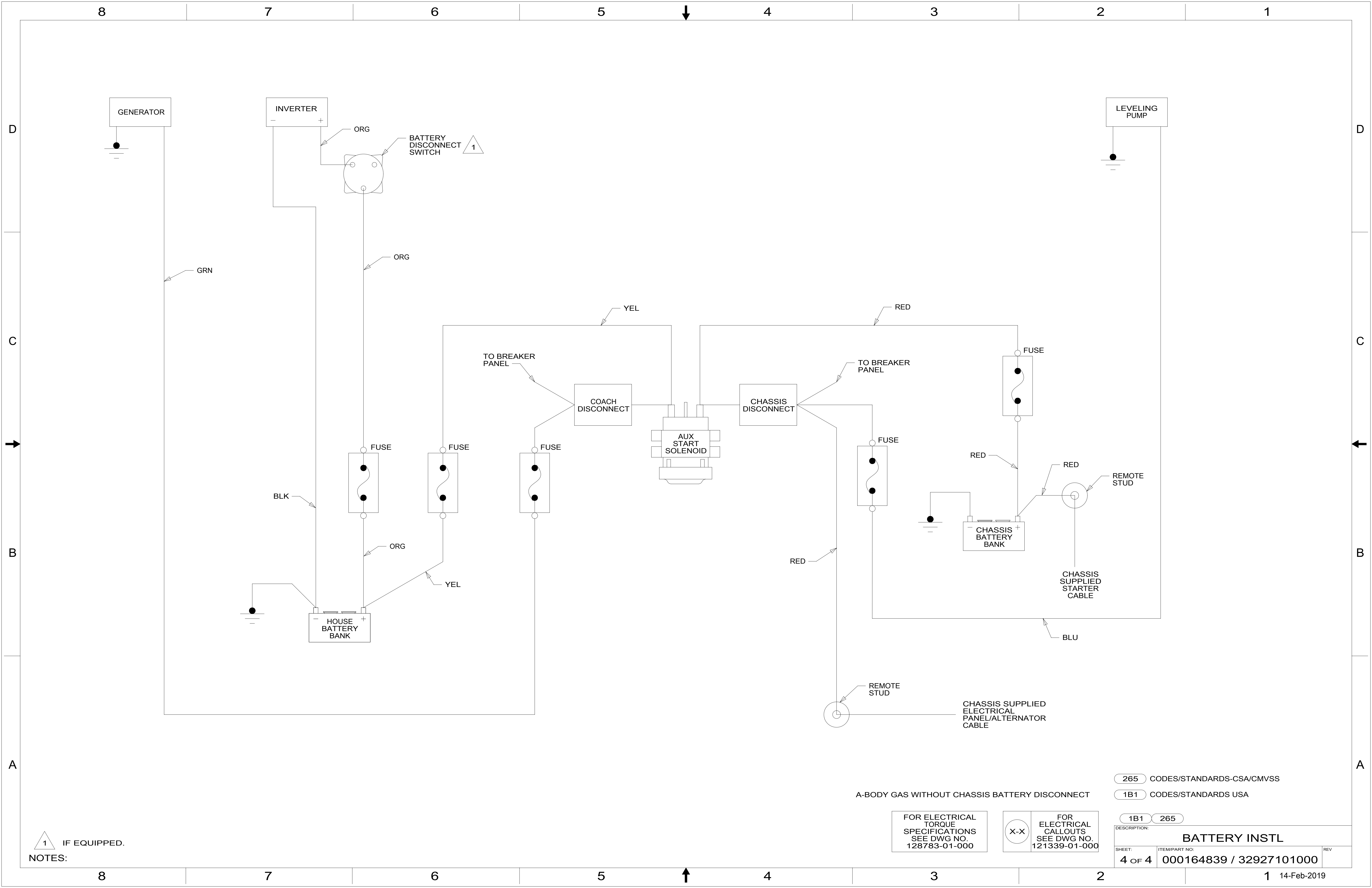
- NOTES:**
- 3 MOUNT INVERTER/CHARGER TEMPERATURE SENSOR ON THE BOTTOM OF THE BATTERY TERMINAL, BELOW THE OTHER BATTERY CABLE RING TERMINALS.
  - 2 CONNECT TO OUTER BATTERY WITH OPTION 79W  
OPTION 15L SHOWN.
  - 1 CABLE NOT USED WITH OPTION 79W

FOR ELECTRICAL TORQUE SPECIFICATIONS SEE DWG NO. 128783-01-000

FOR ELECTRICAL CALLOUTS SEE DWG NO. 121339-01-000

- 79W REFRIGERATOR-4 DOOR
- 15L RESIDENTIAL REFRIGERATOR PKG
- 265 CODES/STANDARDS-CSA/CMVSS
- 1B1 CODES/STANDARDS USA

DESCRIPTION:		1B1 265	
<b>BATTERY INSTL</b>			
SHEET:	ITEM/PART NO.:	REV:	
3 OF 4	000164839 / 32927101000		



NOTES:  
 1 IF EQUIPPED.

A-BODY GAS WITHOUT CHASSIS BATTERY DISCONNECT

FOR ELECTRICAL TORQUE SPECIFICATIONS SEE DWG NO. 128783-01-000

FOR ELECTRICAL CALLOUTS SEE DWG NO. 121339-01-000

- 265 CODES/STANDARDS-CSA/CMVSS
- 1B1 CODES/STANDARDS USA

DESCRIPTION:		1B1 265	
<b>BATTERY INSTL</b>			
SHEET:	ITEM/PART NO.:	REV:	
4 OF 4	000164839 / 32927101000		