

CIRCUIT BREAKER-20 AMP  
93654-03-000  
SCREW  
G52-06-04U  
G52-06-05U  
SPACER-CIRCUIT BREAKER  
141789-01-000

CIRCUIT BREAKER-6 AMP  
93654-01-000  
SCREW  
G52-06-04U  
G52-06-05U  
SPACER-CIRCUIT BREAKER  
141789-01-000

CIRCUIT BREAKER-6 AMP  
93654-01-000  
SCREW  
G52-06-04U  
G52-06-05U  
SPACER-CIRCUIT BREAKER  
141789-01-000

CIRCUIT BREAKER-15 AMP  
93654-02-000  
SCREW  
G52-06-05U  
SPACER-CIRCUIT BREAKER  
141789-01-000

CIRCUIT BREAKER-55 AMP  
113482-01-000  
SCREW  
G19-10-08U

CIRCUIT BREAKER-30 AMP  
93655-02-000  
SPACER-CIRCUIT BREAKER  
141789-01-000  
SCREW  
G52-06-04U  
G52-06-05U

CIRCUIT BREAKER-30 AMP  
93655-02-000  
SPACER-CIRCUIT BREAKER  
141789-01-000  
SCREW  
G52-06-04U (2)

CIRCUIT BREAKER-55 AMP  
113482-01-000  
SCREW  
G19-10-08U

CIRCUIT BREAKER-30 AMP  
93655-02-000  
SPACER-CIRCUIT BREAKER  
141789-01-000  
SCREW  
G52-06-05U (2)

LABEL-CIRCUIT BREAKER  
93236-53-000

PLATE-CIRCUIT BREAKER  
118531-11-CHT  
SCREW  
G39-08-089 (2)

SLOT TO BE ORIENTED  
BELOW BREAKER HOLES

- 2 USE THE LONGER SCREW TO PROPERLY ATTACH BREAKER TO BUSS BAR.
- 1 REPLACE EXISTING SCREW TO PROPERLY ATTACH BREAKER TO BUSS BAR.

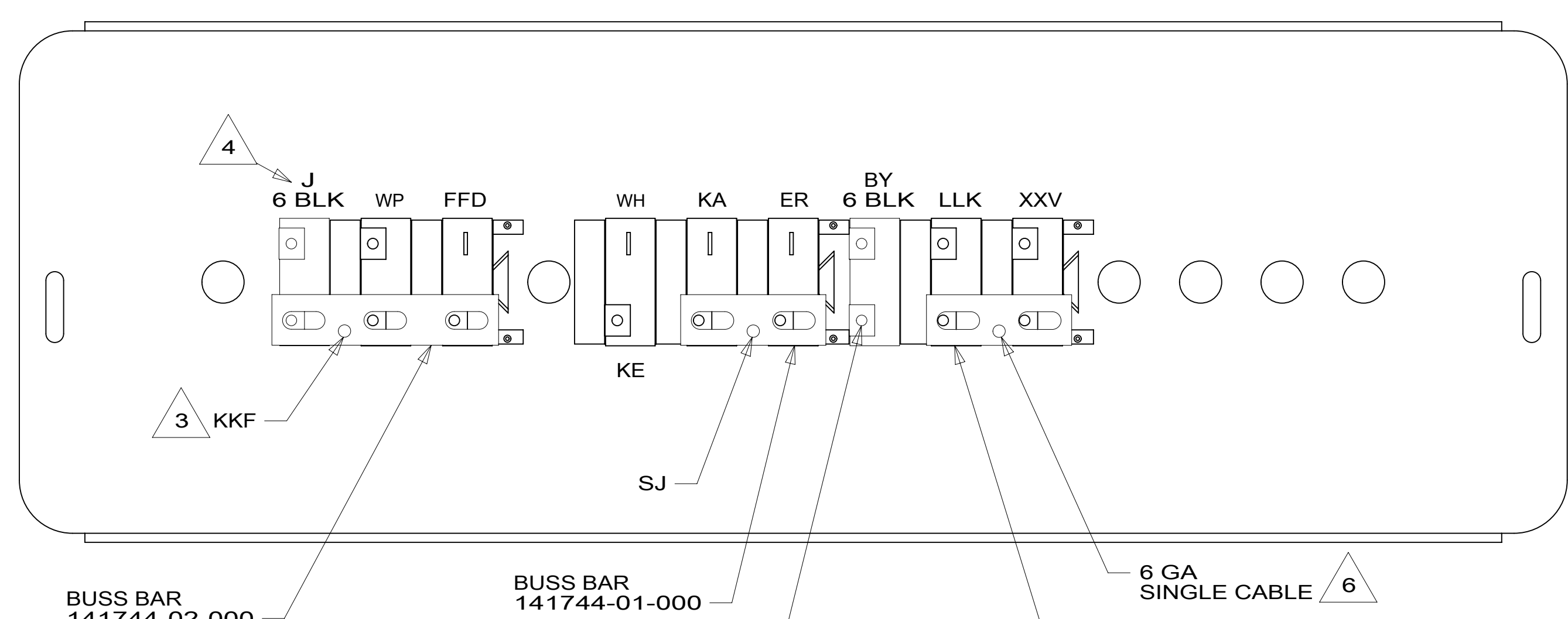
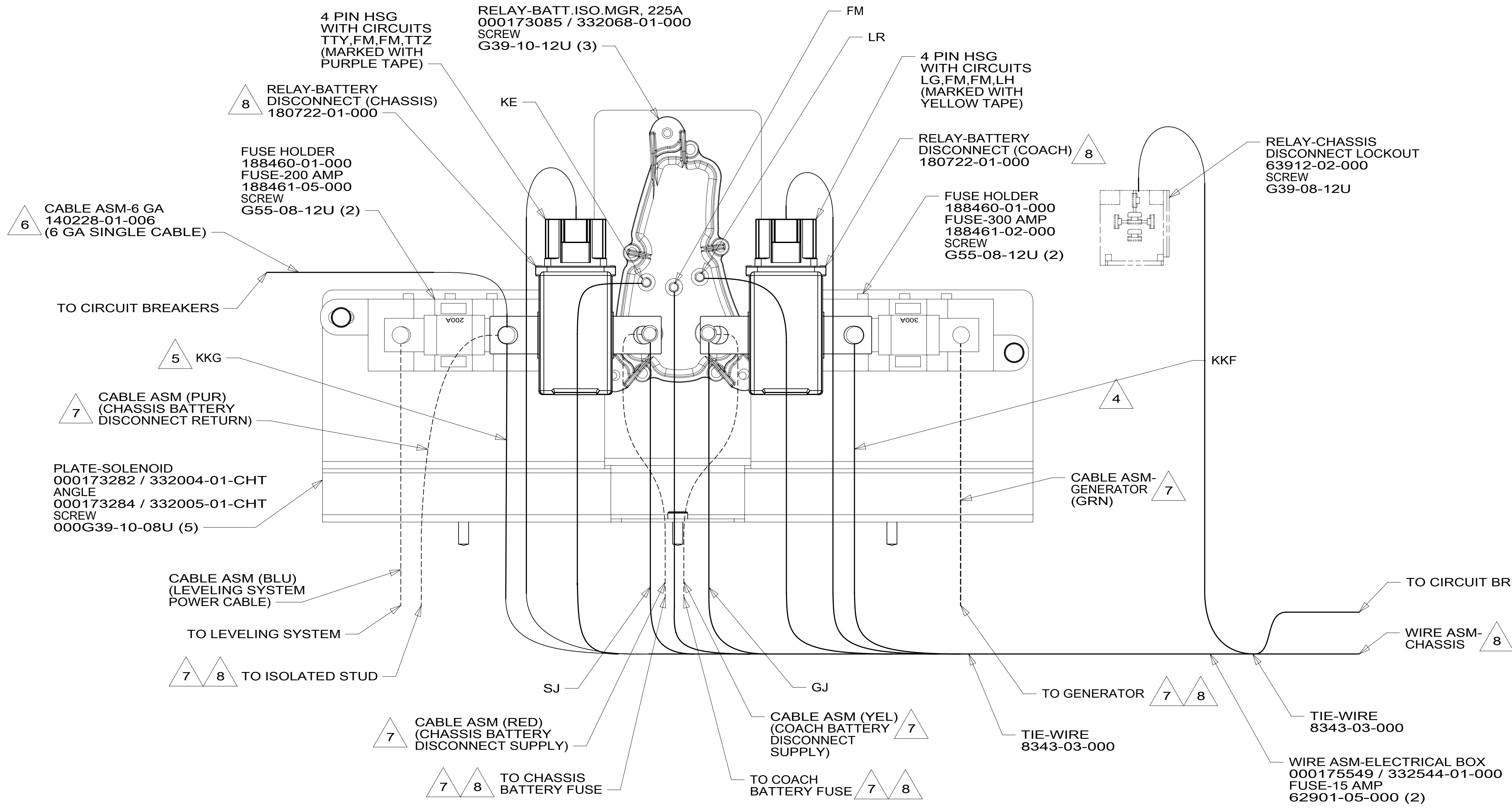
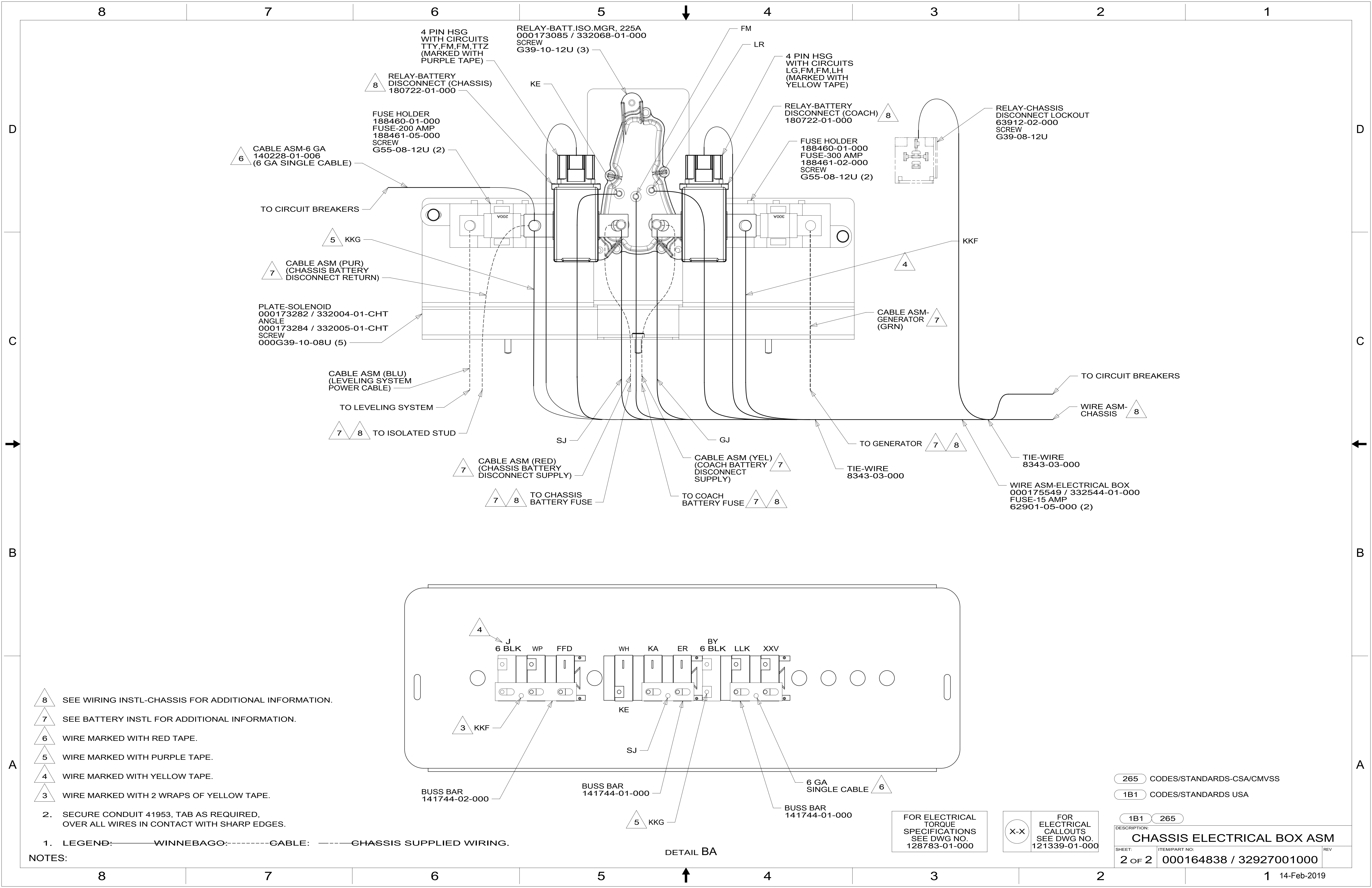
FOR ELECTRICAL  
TORQUE  
SPECIFICATIONS  
SEE DWG NO.  
128783-01-000

FOR ELECTRICAL  
CALLOUTS  
SEE DWG NO.  
121339-01-000

- 265 CODES/STANDARDS-CSA/CMVSS
- 1B1 CODES/STANDARDS USA
- 1B1 265

**WINNEBAGO**  
COPYRIGHT 2016 WINNEBAGO INDUSTRIES, INC.

DSNR:		ALL DIMENSIONS ARE IN MILLIMETERS	
DIFFR:		MATERIAL:	
UNSPECIFIED TOLERANCES:			
WHOLE DIM (X)	: 3		
ONE-PLACE (X.X)	: 1.5		
TWO-PLACE (X.XX)	: 0.50		
ANGLE	: 1°		
REFER TO ES0018 FOR FASTENER TIGHTENING GUIDELINES		WEIGHT: (LBS)	FIRST USED:
			19 F35F
<b>CHASSIS ELECTRICAL BOX ASM</b>			
SHEET:	ITEM/PART NO.:	REV:	
1 OF 2	000164838 / 32927001000		



- 8 SEE WIRING INSTL-CHASSIS FOR ADDITIONAL INFORMATION.
- 7 SEE BATTERY INSTL FOR ADDITIONAL INFORMATION.
- 6 WIRE MARKED WITH RED TAPE.
- 5 WIRE MARKED WITH PURPLE TAPE.
- 4 WIRE MARKED WITH YELLOW TAPE.
- 3 WIRE MARKED WITH 2 WRAPS OF YELLOW TAPE.

2. SECURE CONDUIT 41953, TAB AS REQUIRED, OVER ALL WIRES IN CONTACT WITH SHARP EDGES.

1. LEGEND: — WINNEBAGO: - - - - - CABLE: - - - - - CHASSIS SUPPLIED WIRING.

FOR ELECTRICAL TORQUE SPECIFICATIONS SEE DWG NO. 128783-01-000

FOR ELECTRICAL CALLOUTS SEE DWG NO. 121339-01-000

265	CODES/STANDARDS-CSA/CMVSS
1B1	CODES/STANDARDS USA
1B1	265
DESCRIPTION: <b>CHASSIS ELECTRICAL BOX ASM</b>	
SHEET: 2 OF 2	ITEM/PART NO: 000164838 / 32927001000
REV 14-Feb-2019	