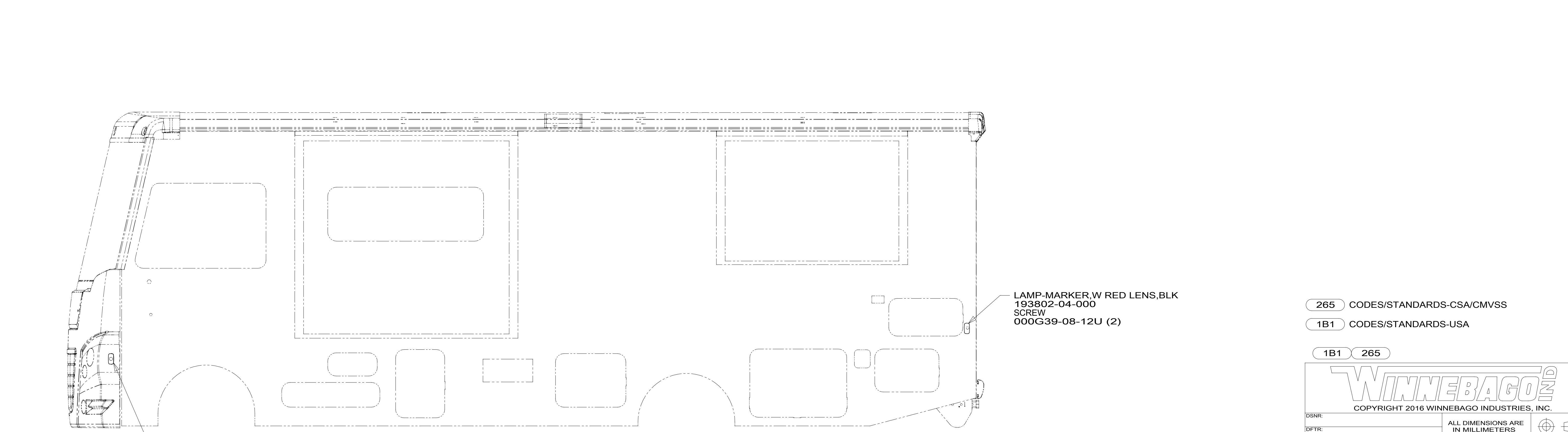
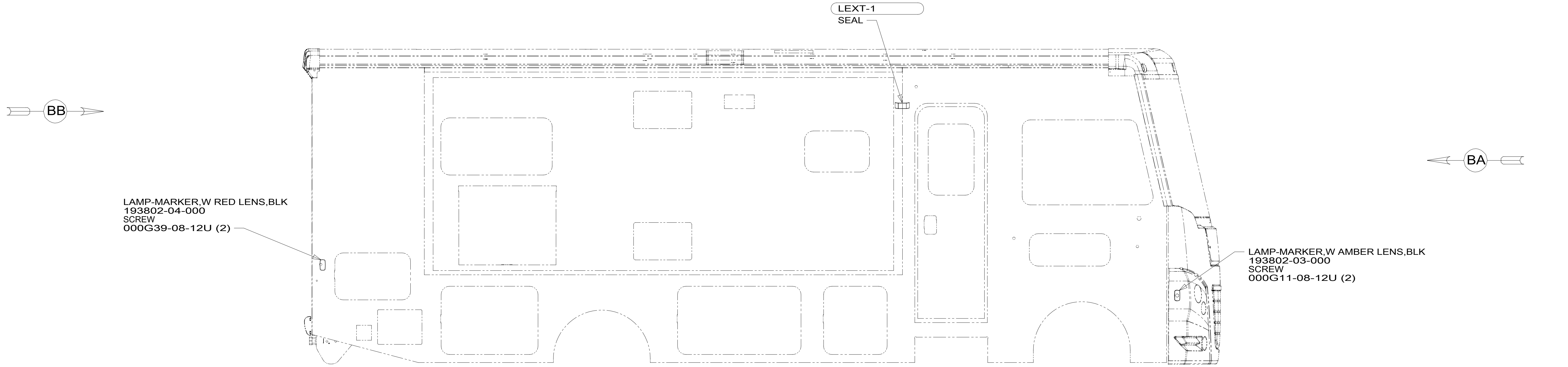
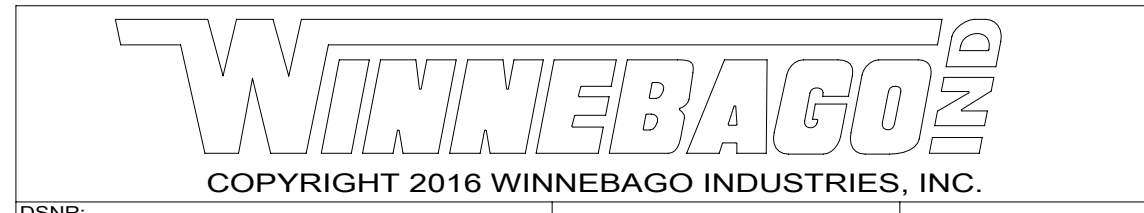


8 7 6 5 4 3 2 1



- 265 CODES/STANDARDS-CSA/CMVSS
- 1B1 CODES/STANDARDS-USA
- 1B1 265



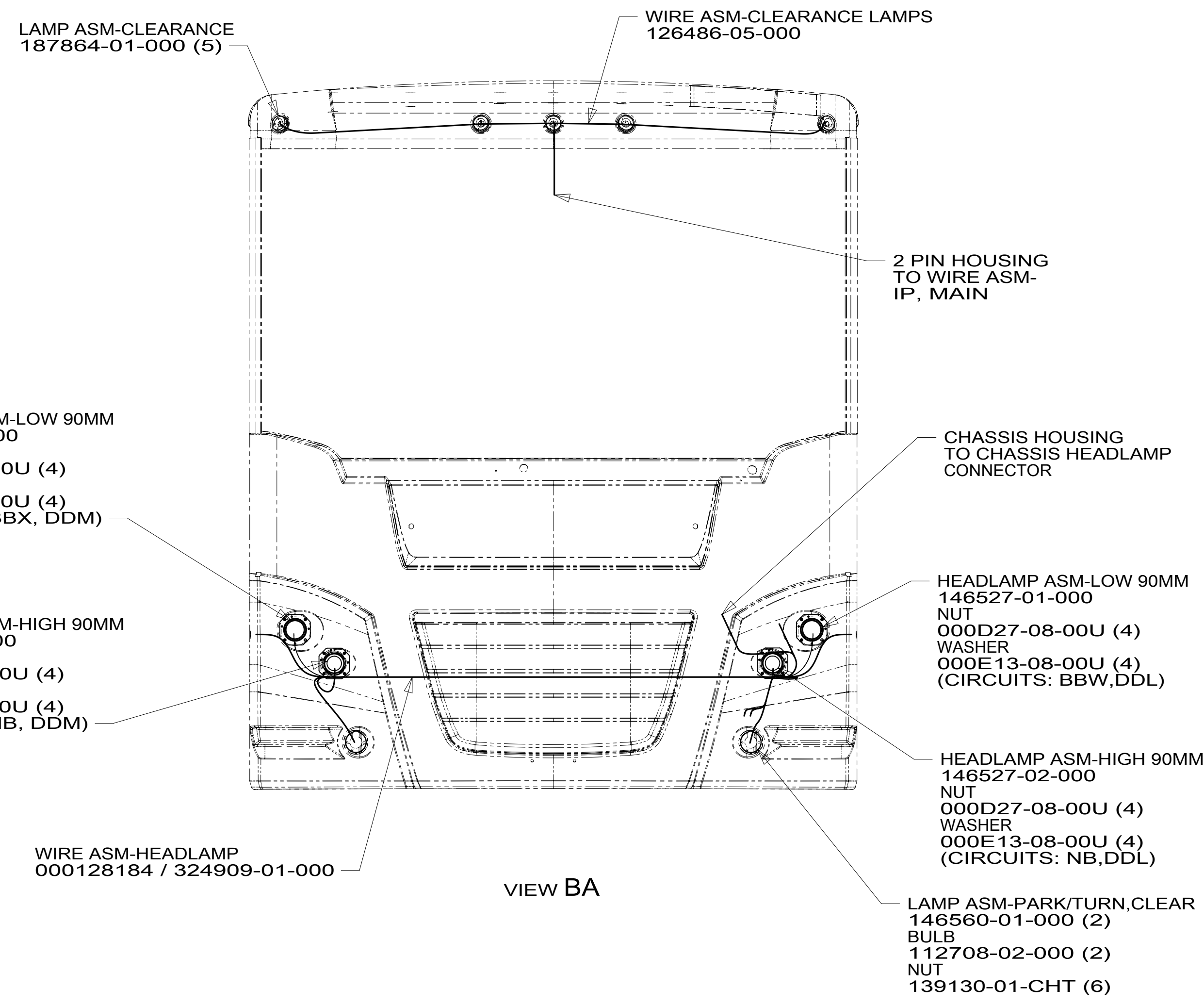
DSNR:		ALL DIMENSIONS ARE IN MILLIMETERS	
DFFR:		MATERIAL:	
UNSPECIFIED TOLERANCES:			
WHOLE DIM (X)	: 3		
ONE-PLACE (X.X)	: 1.5		
TWO-PLACE (X.XX)	: 0.50		
ANGLE	: 1°		
REFER TO ES0018 FOR FASTENER TIGHTENING GUIDELINES		WEIGHT: (LBS)	FIRST USED:
			19 F27N

FOR ELECTRICAL TORQUE SPECIFICATIONS SEE DWG NO. 128783-01-000

FOR ELECTRICAL CALLOUTS SEE DWG NO. 121339-01-000

**WIRING INSTL-EXTERIOR LAMPS**

SHEET: 1 OF 2 ITEM/PART NO.: 000164691 / 32921201000 REF: 1 25-Jun-2019



**2** LAMP ASM-STOP/TURN/  
TAIL/BACKUP  
183787-01-CHT (2)  
SCREW  
000G11-07-12U (12)  
SEALER-TAPE  
069640-21-000 (3,4)

SEE DETAIL BC

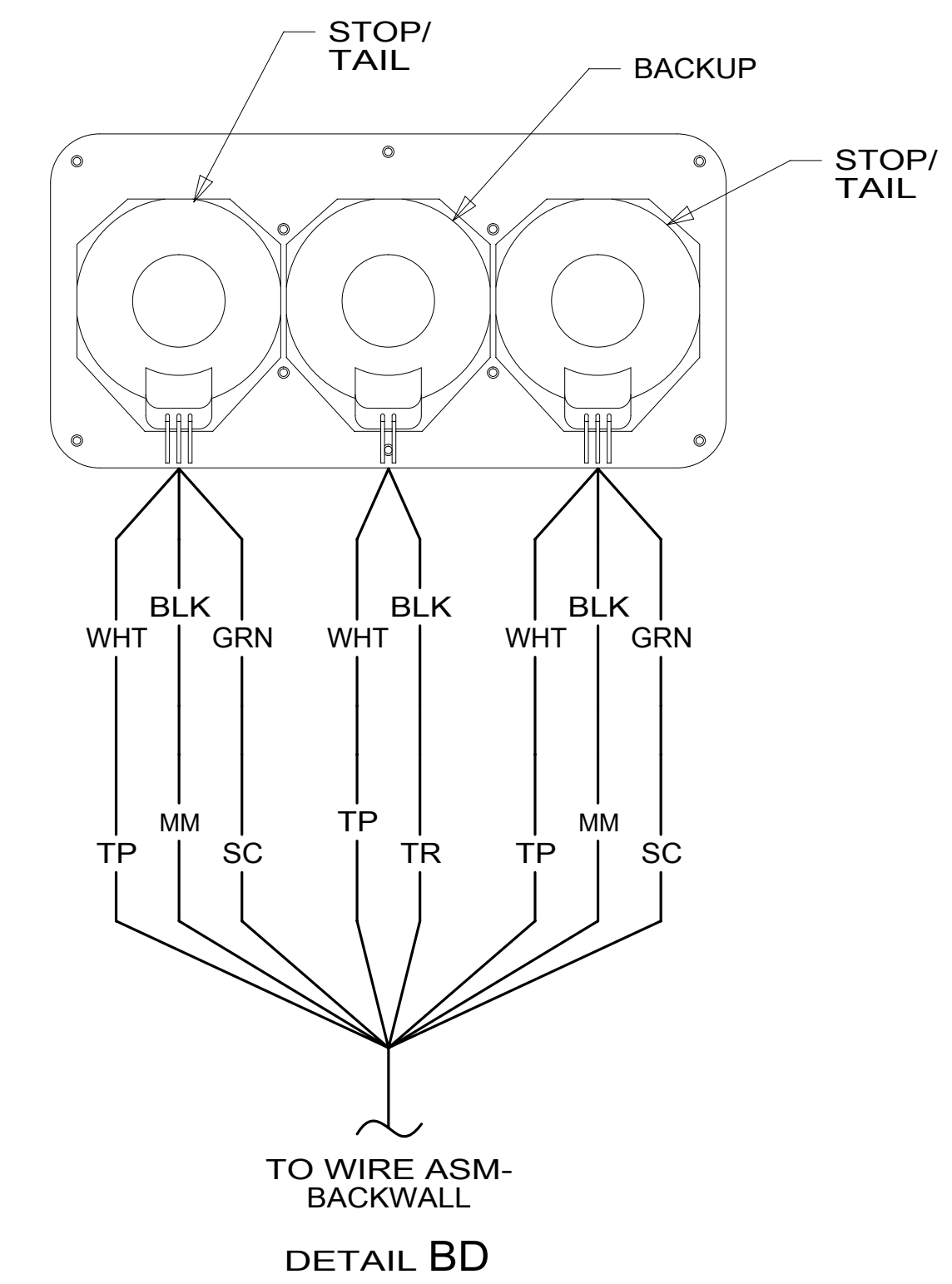
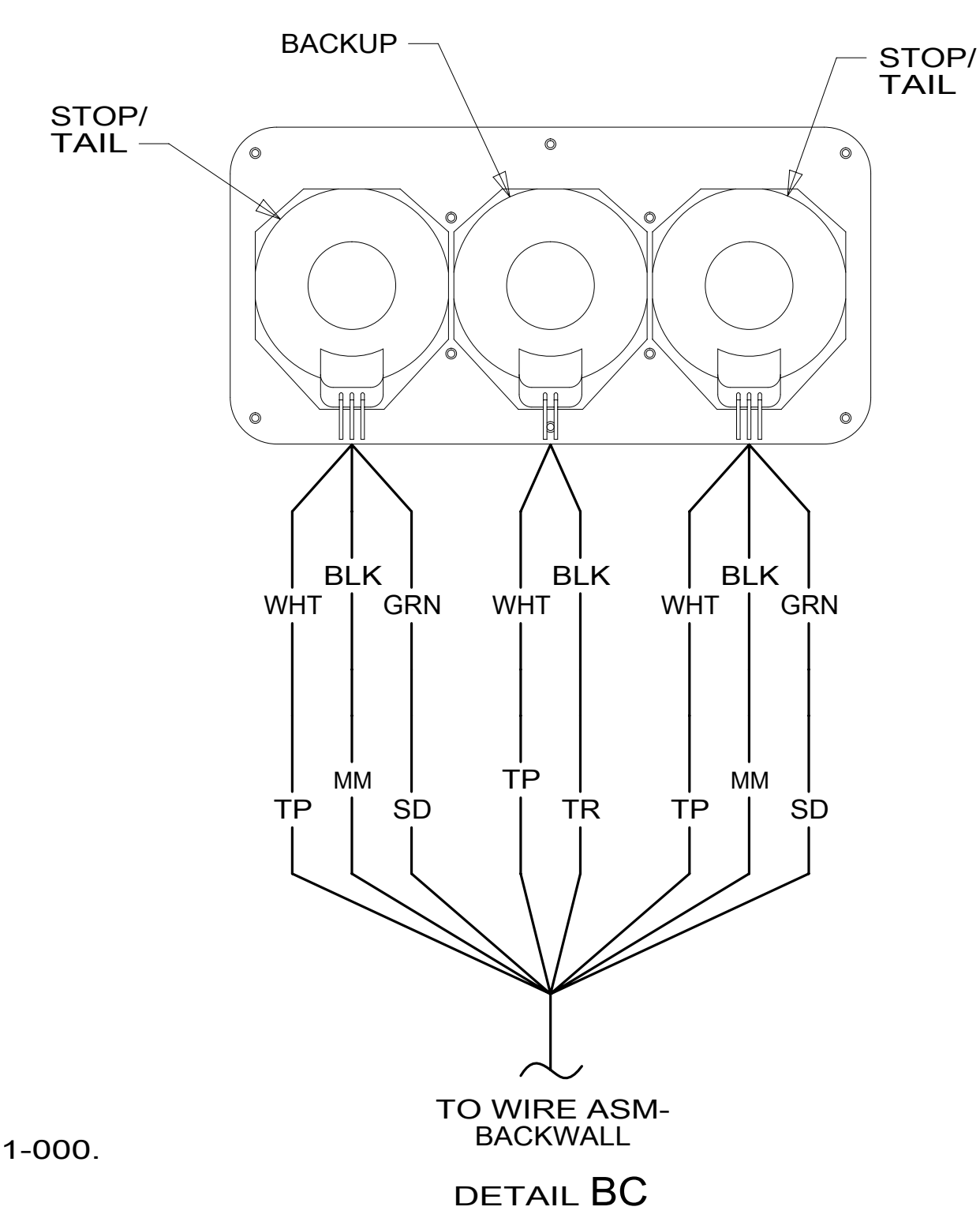
**BRACKET-LICENSE**  
066432-03-000  
SCREW  
000G67-10-129 (2)  
**LIGHT-LICENSE**  
066432-02-000  
SCREW  
000G39-08-12U (2)  
**CONNECTOR**  
058028-01-000 (2)

**6-PIN HOUSING**  
TO WIRE ASM-CHASSIS

**CONNECTOR-TRAILER**  
157593-01-000  
SCREW  
101618-01-000 (4)

**WIRE ASM-CHASSIS**  
TO TRAILER CONNECTOR

**VIEW BB**



**2** TAIL LAMP TO BE INSTALLED WITH WIRES DOWN.

1. GATHER ALL EXCESS WIRE AFTER MAKING ALL CONNECTIONS AND BUNDLE AND SECURE WITH TIE-WIRE 008343-01-000 OR 093147-01-000.

**NOTES:**

FOR ELECTRICAL  
TORQUE  
SPECIFICATIONS  
SEE DWG NO.  
128783-01-000

FOR ELECTRICAL  
CALLOUTS  
SEE DWG NO.  
121339-01-000

265 CODES/STANDARDS-CSA/CMVSS  
1B1 CODES/STANDARDS USA

DESCRIPTION: <b>WIRING INSTL-EXTERIOR LAMPS</b>		REV
SHEET: 2 OF 2	ITEM/PART NO: 000164691 / 32921201000	