

VIEW AA

- 4 ATTACH TO STICK WORK USING BRACKETS AND SCREWS THAT COME WITH CONVERTER.
3. WHERE WIRES PASS THROUGH HOLES IN STEEL AND NOT OTHERWISE PROTECTED, USE GROMMET 92908-02-000.
2. ALL WIRES TO BE SECURED WITH CLAMP 10495-01-000 OR CLIP 80734-01-000 EVERY 600MM. USE SCREW G67-10-12U UNLESS OTHERWISE SPECIFIED.
1. 110V WIRE TO BE CLAMPED WITH CLAMP 10497-05-000 WITHIN 200MM OF OUTLET BOXES, USE SCREW G67-10-12U.

NOTES:

FOR ELECTRICAL TORQUE SPECIFICATIONS SEE DWG NO. 128783-01-000

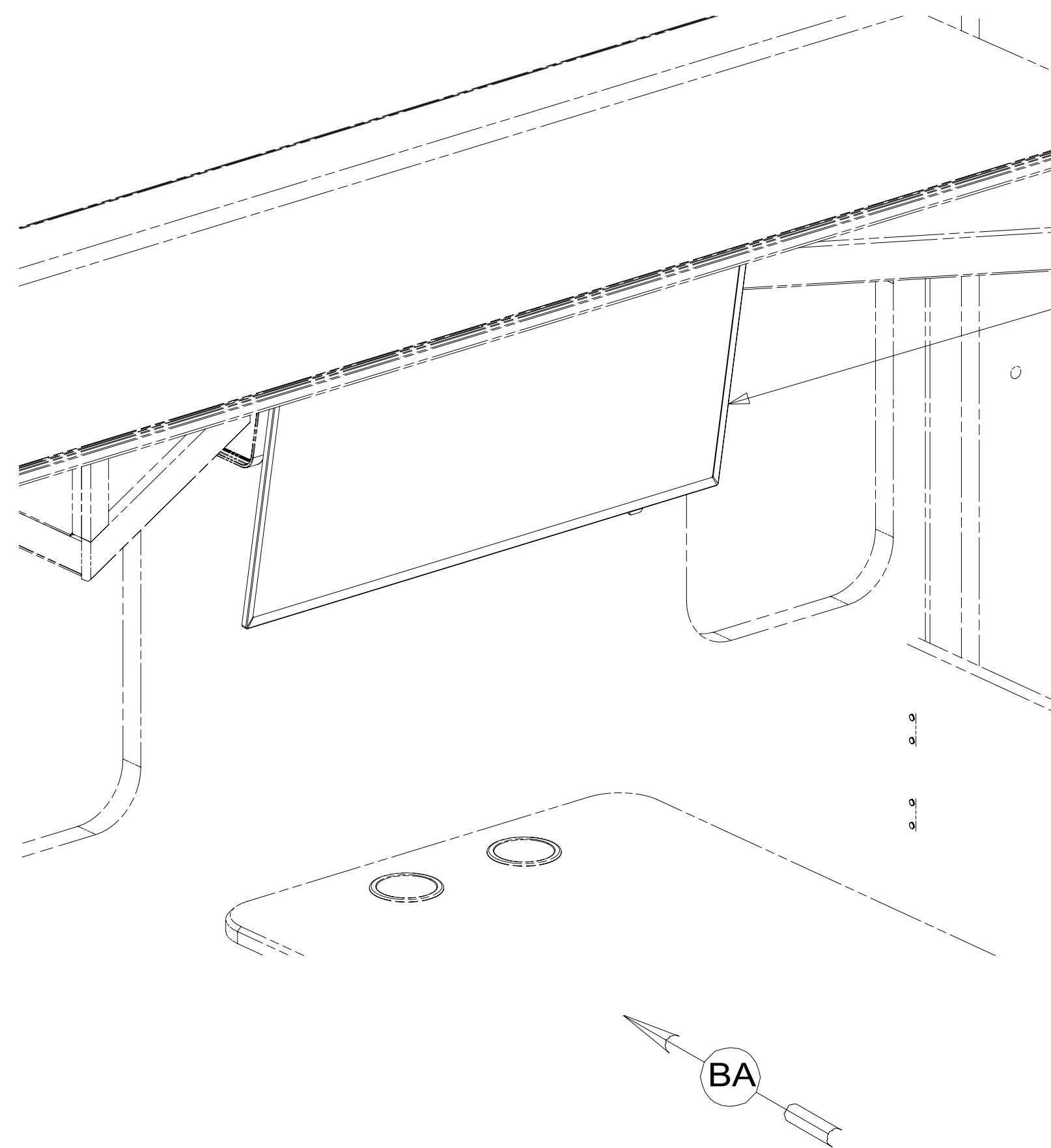
FOR ELECTRICAL CALLOUTS SEE DWG NO. 121339-01-000

- 265 CODES/STANDARDS-CSA/CMVSS
- 1B1 CODES/STANDARDS USA

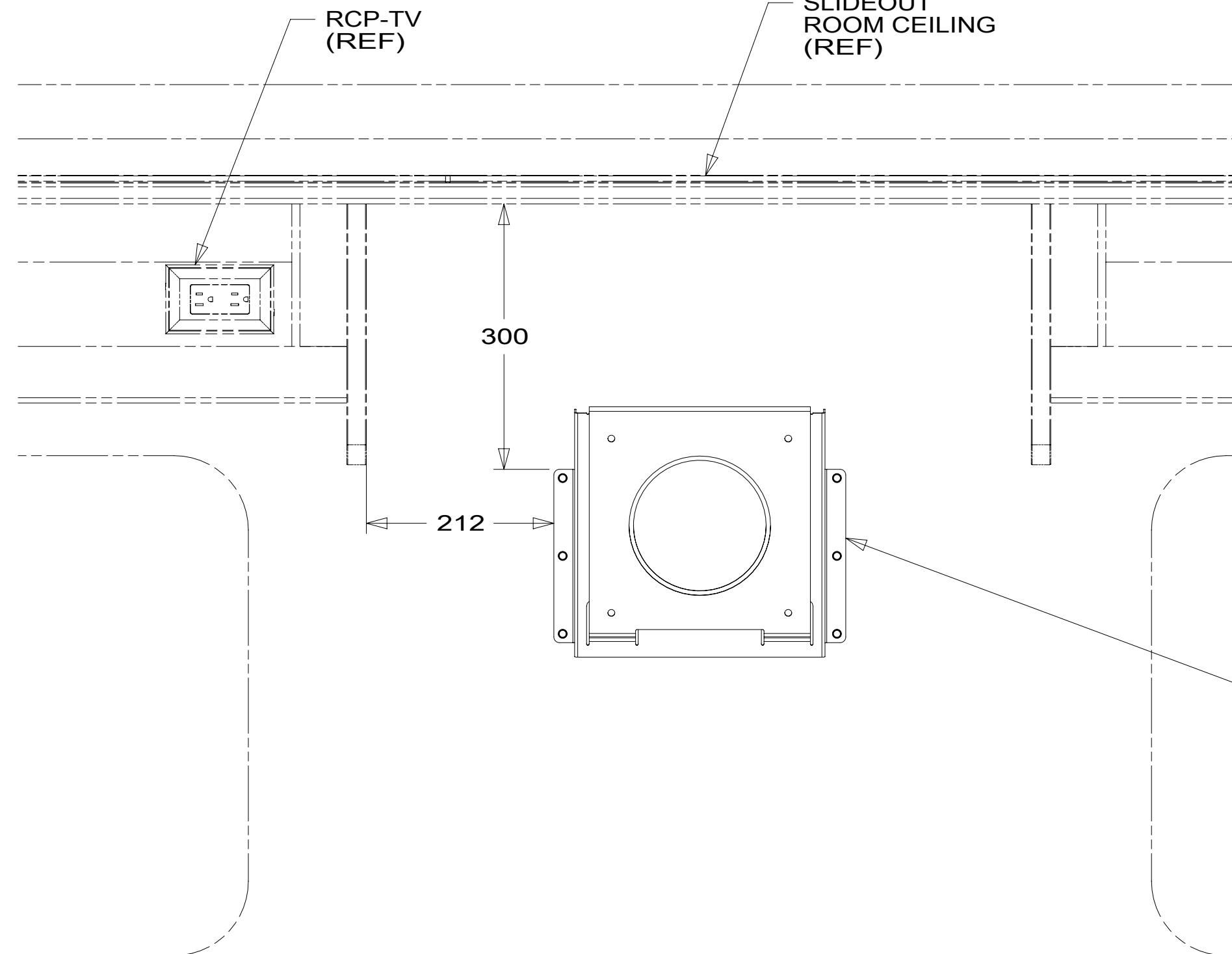
WINNEBAGO
COPYRIGHT 2016 WINNEBAGO INDUSTRIES, INC.

DSNR:	ALL DIMENSIONS ARE IN MILLIMETERS
DFFR:	MATERIAL:
UNSPECIFIED TOLERANCES:	
WHOLE DIM (X) :	3
ONE-PLACE (X.X) :	1.5
TWO-PLACE (X.XX) :	0.50
ANGLE :	1°
REFER TO ES0018 FOR FASTENER TIGHTENING GUIDELINES	WEIGHT: (LBS) FIRST USED: 19 E27PE
DESCRIPTION: WIRING INSTL-TV/DVD	
SHEET: 1 OF 5	ITEM/PART NO: 000164480 / 32957401000
REF:	1 20-Jun-2019

8 7 6 5 4 3 2 1



TV-39" HDTV, INSIGNIA
 000167539 / 330141-01-000
 SCREW
 (SUPPLIED W/ TV)
 PLATE-MNTNG, TV, 40INSIGNIA
 000029916 / 316569-01-CHT
 SCREW (LOWER MOUNT)
 G39-10-08U (2)



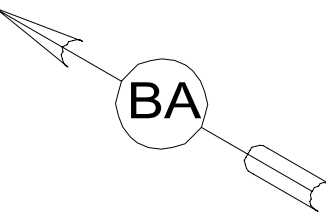
RCP-TV (REF)
 SLIDEOUT ROOM CEILING (REF)

300

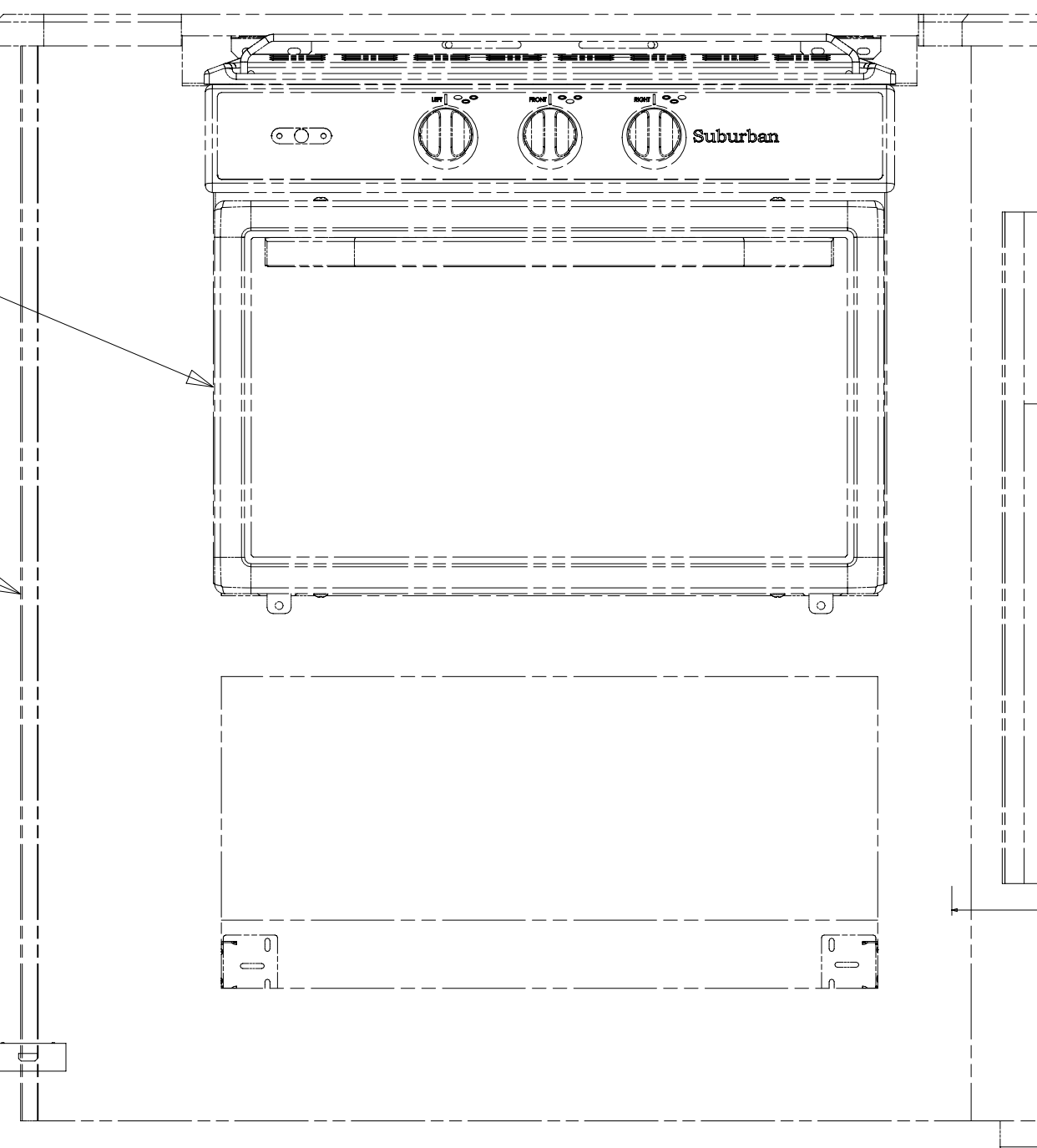
212

BRACKET-TV,39INSIGNIA
 000117751 / 322223-01-CHT
 SCREW
 000G39-10-16U (6)

VIEW BA
 (TV NOT SHOWN)



B



OVEN

GALLEY CABINET

CONVERTER-HDMI/CAT6
 (RECEIVER)
 (REF)

A

8 7 6 5 4 3 2 1



265 CODES/STANDARDS-CSA/CMVSS

1B1 CODES/STANDARDS USA

1B1 265

FOR ELECTRICAL
 TORQUE
 SPECIFICATIONS
 SEE DWG NO.
 128783-01-000

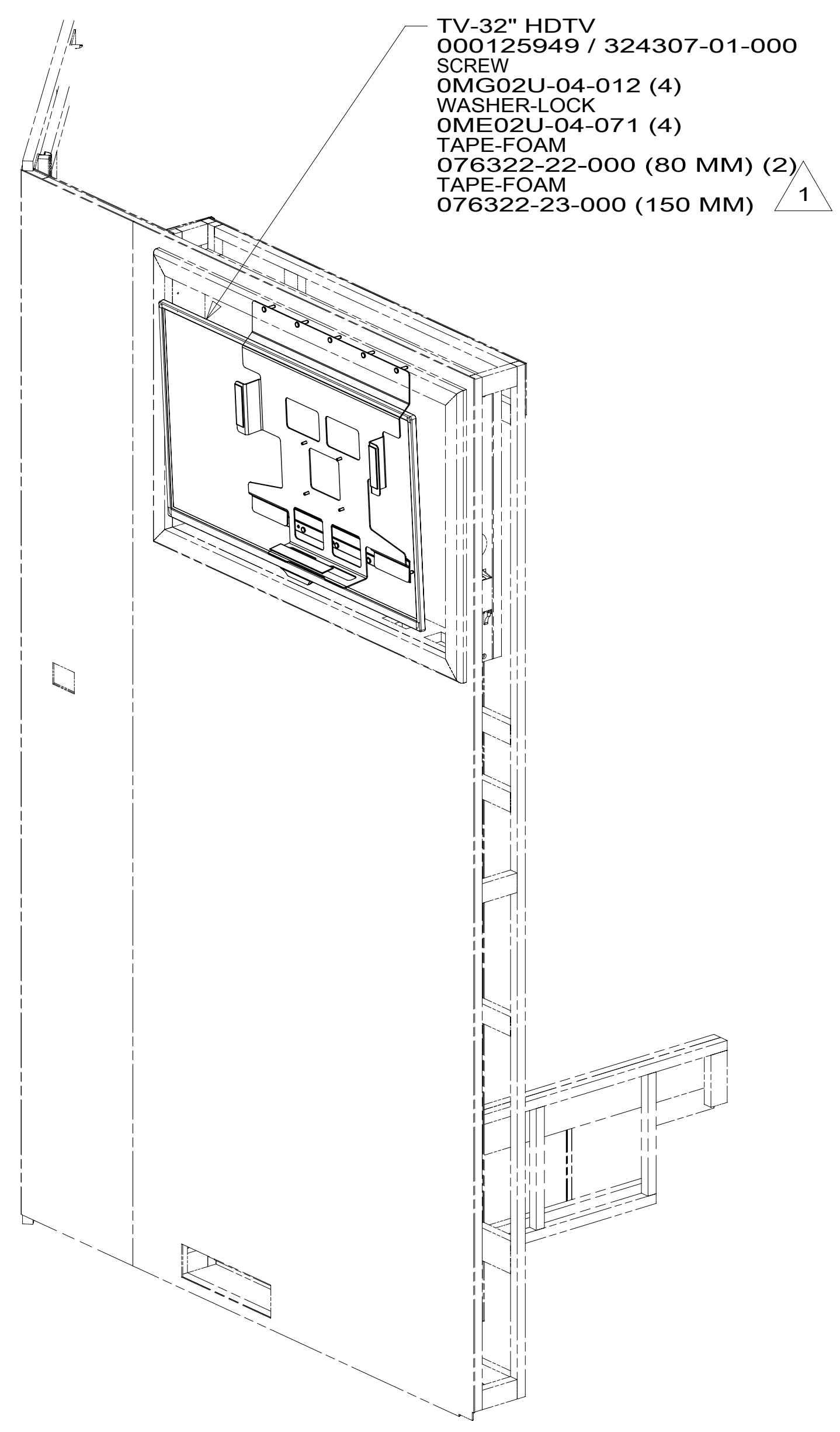
FOR
 ELECTRICAL
 CALLOUTS
 SEE DWG NO.
 121339-01-000

DESCRIPTION: WIRING INSTL-TV/DVD		
SHEET: 2 OF 5	ITEM/PART NO: 000164480 / 32957401000	REV

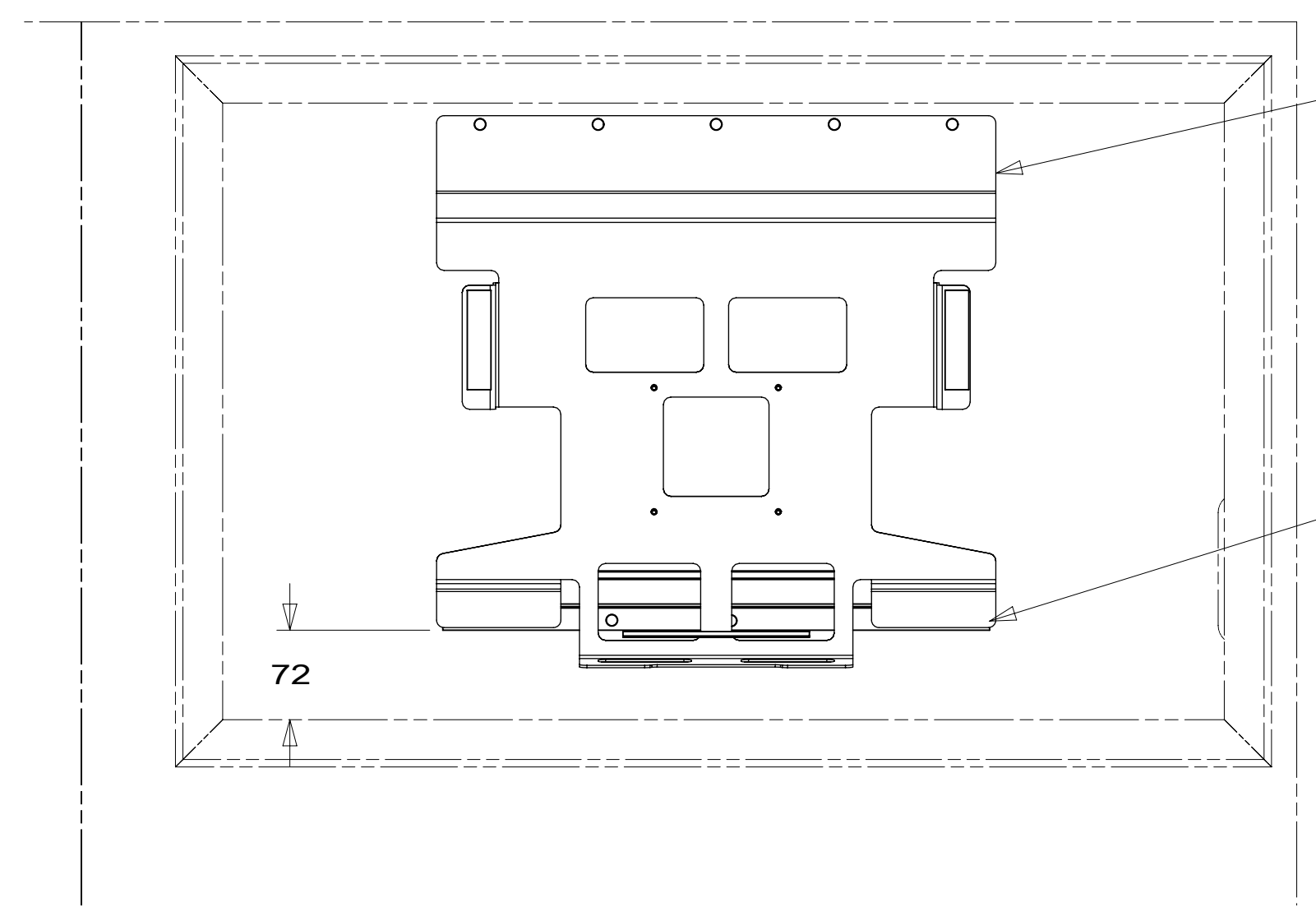
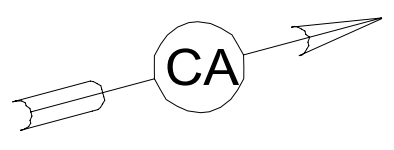
8 7 6 5 4 3 2 1

D
C
B
A

D
C
B
A



TV-32" HDTV
 000125949 / 324307-01-000
 SCREW
 OMG02U-04-012 (4)
 WASHER-LOCK
 OME02U-04-071 (4)
 TAPE-FOAM
 076322-22-000 (80 MM) (2)
 TAPE-FOAM
 076322-23-000 (150 MM) 1



BRACKET-TV, 32 INSIG
 000128763 / 325071-01-CHT
 SCREW
 000G11-10-16U (5)

CLIP-TRIM
 130034-08-CHT
 SCREW
 000G11-10-16U (5)

VIEW CA
 (TV NOT SHOWN)

1 PREP BOTH SURFACES WITH ADHESIVE-PROMOTER 087211-01-000.

FOR ELECTRICAL
 TORQUE
 SPECIFICATIONS
 SEE DWG NO.
 128783-01-000

FOR
 ELECTRICAL
 CALLOUTS
 SEE DWG NO.
 121339-01-000

- 68X TV - BEDROOM
- 265 CODES/STANDARDS-CSA/CMVSS
- 1B1 CODES/STANDARDS USA

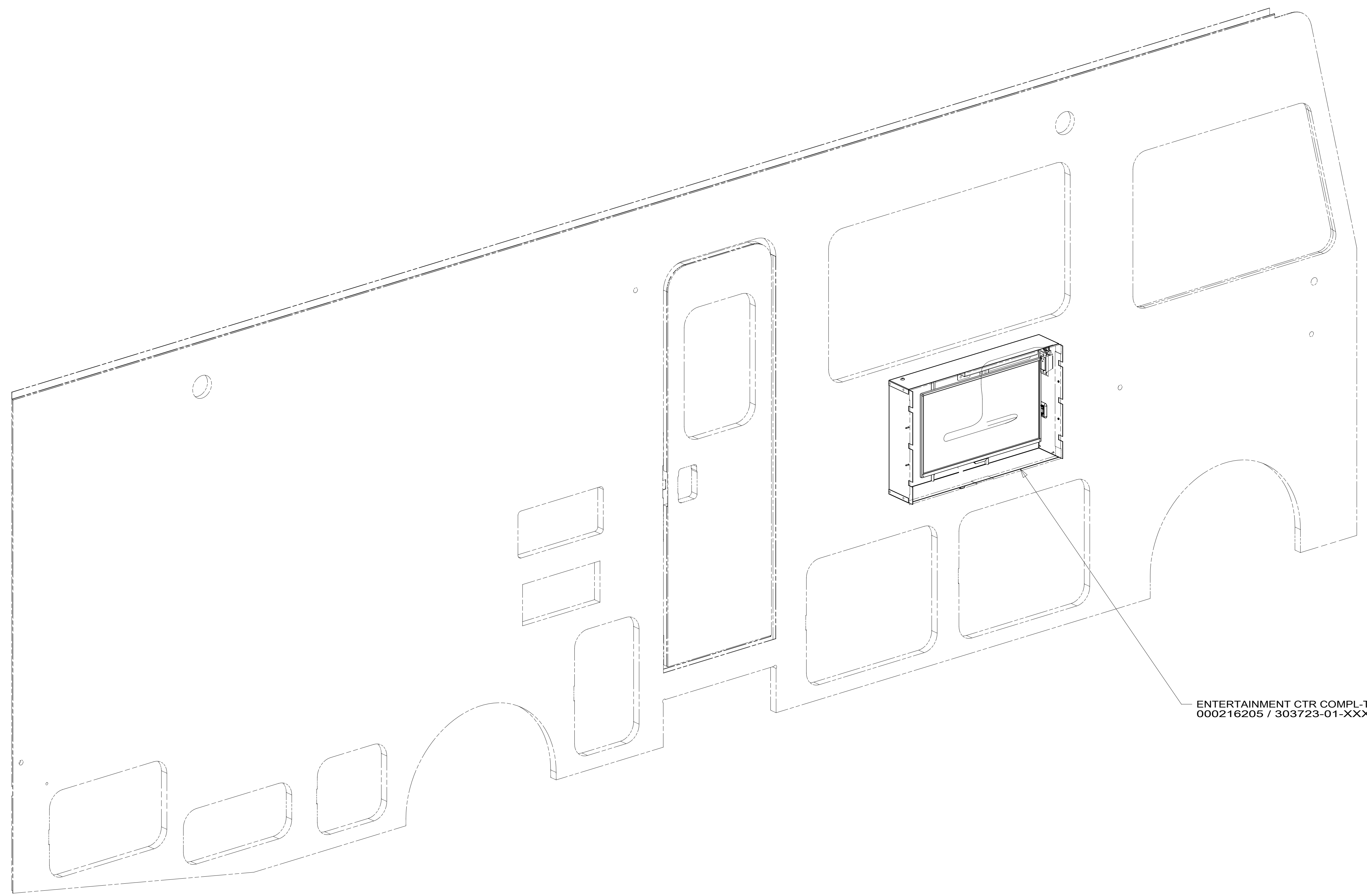
DESCRIPTION:	1B1 265 68X	
WIRING INSTL-TV/DVD		
SHEET:	ITEM/PART NO:	REV
3 OF 5	000164480 / 32957401000	

8 7 6 5 4 3 2 1 20-Jun-2019

8 7 6 5 4 3 2 1

D
C
B
A

D
C
B
A



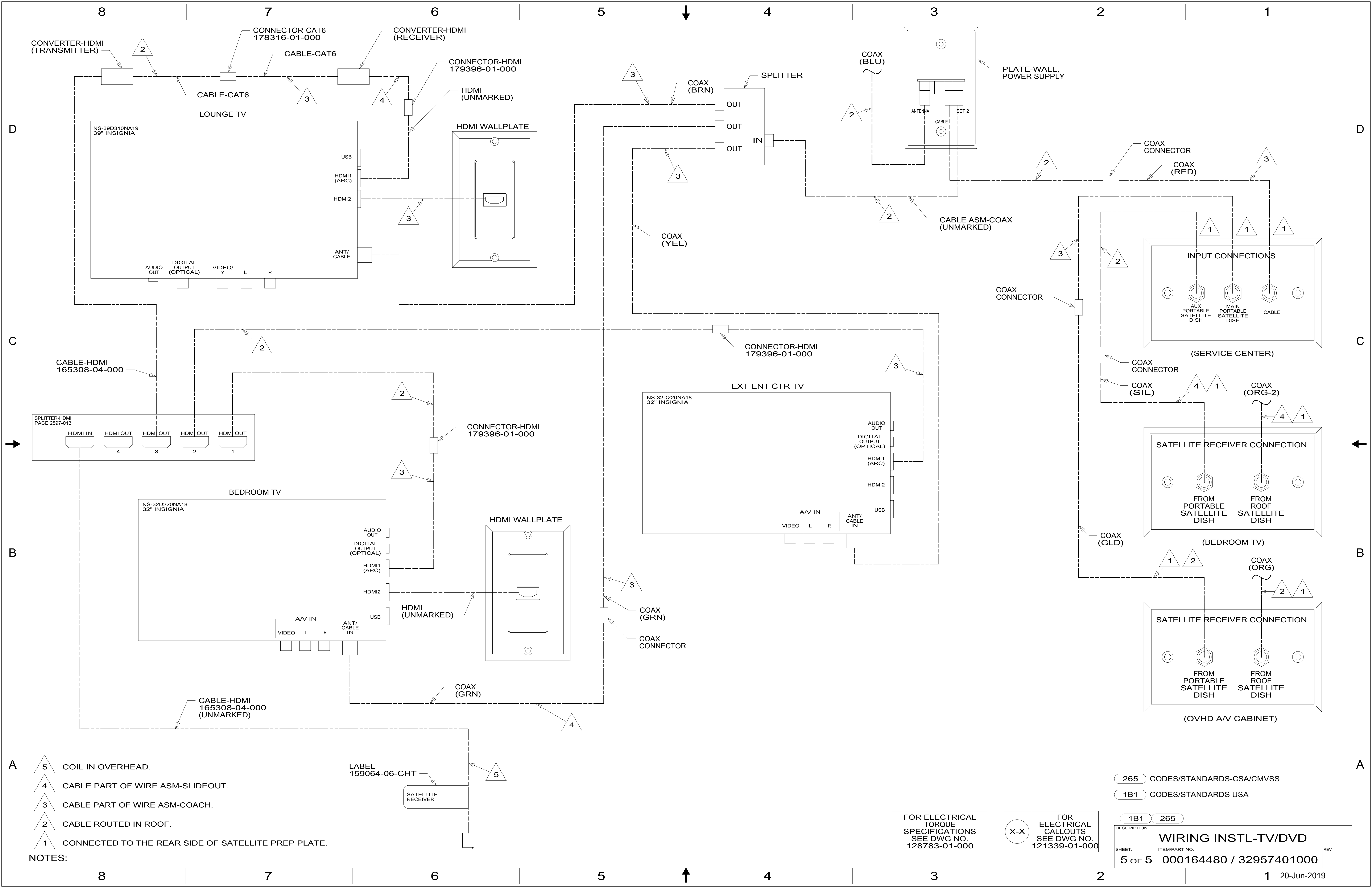
ENTERTAINMENT CTR COMPL-TV
000216205 / 303723-01-XXX

265 CODES/STANDARDS-CSA/CMVSS
1B1 CODES/STANDARDS USA

FOR ELECTRICAL
TORQUE
SPECIFICATIONS
SEE DWG NO.
128783-01-000

X-X
FOR
ELECTRICAL
CALLOUTS
SEE DWG NO.
121339-01-000

DESCRIPTION: WIRING INSTL-TV/DVD	
SHEET: 4 OF 5	ITEM/PART NO.: 000164480 / 32957401000
REV	



- NOTES:**
- 5 COIL IN OVERHEAD.
 - 4 CABLE PART OF WIRE ASM-SLIDEOUT.
 - 3 CABLE PART OF WIRE ASM-COACH.
 - 2 CABLE ROUTED IN ROOF.
 - 1 CONNECTED TO THE REAR SIDE OF SATELLITE PREP PLATE.

LABEL
159064-06-CHT
SATELLITE RECEIVER

FOR ELECTRICAL TORQUE SPECIFICATIONS SEE DWG NO. 128783-01-000

FOR ELECTRICAL CALLOUTS SEE DWG NO. 121339-01-000

- 265 CODES/STANDARDS-CSA/CMVSS
- 1B1 CODES/STANDARDS USA

DESCRIPTION:		WIRING INSTL-TV/DVD	
SHEET:	ITEM/PART NO.:	REV:	
5 OF 5	000164480 / 32957401000		