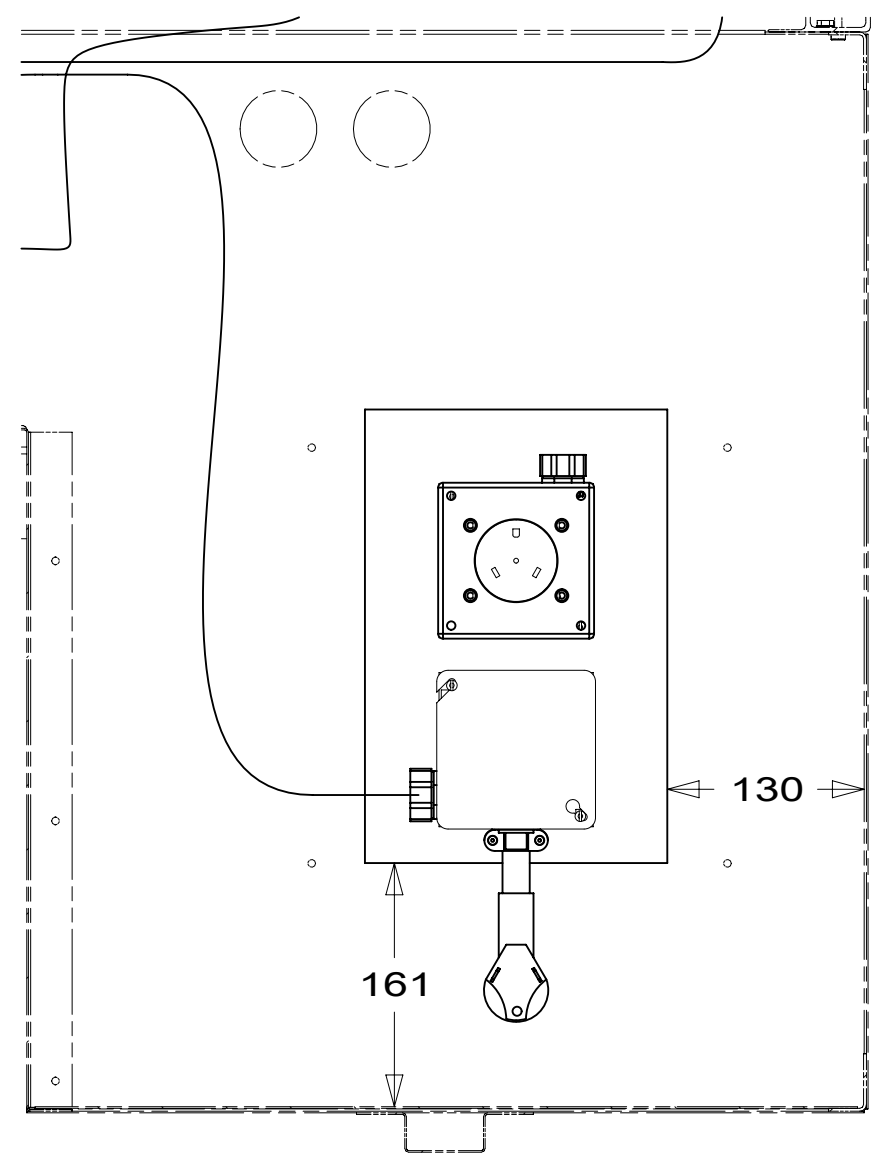


8 7 6 5 4 3 2 1



VIEW AA

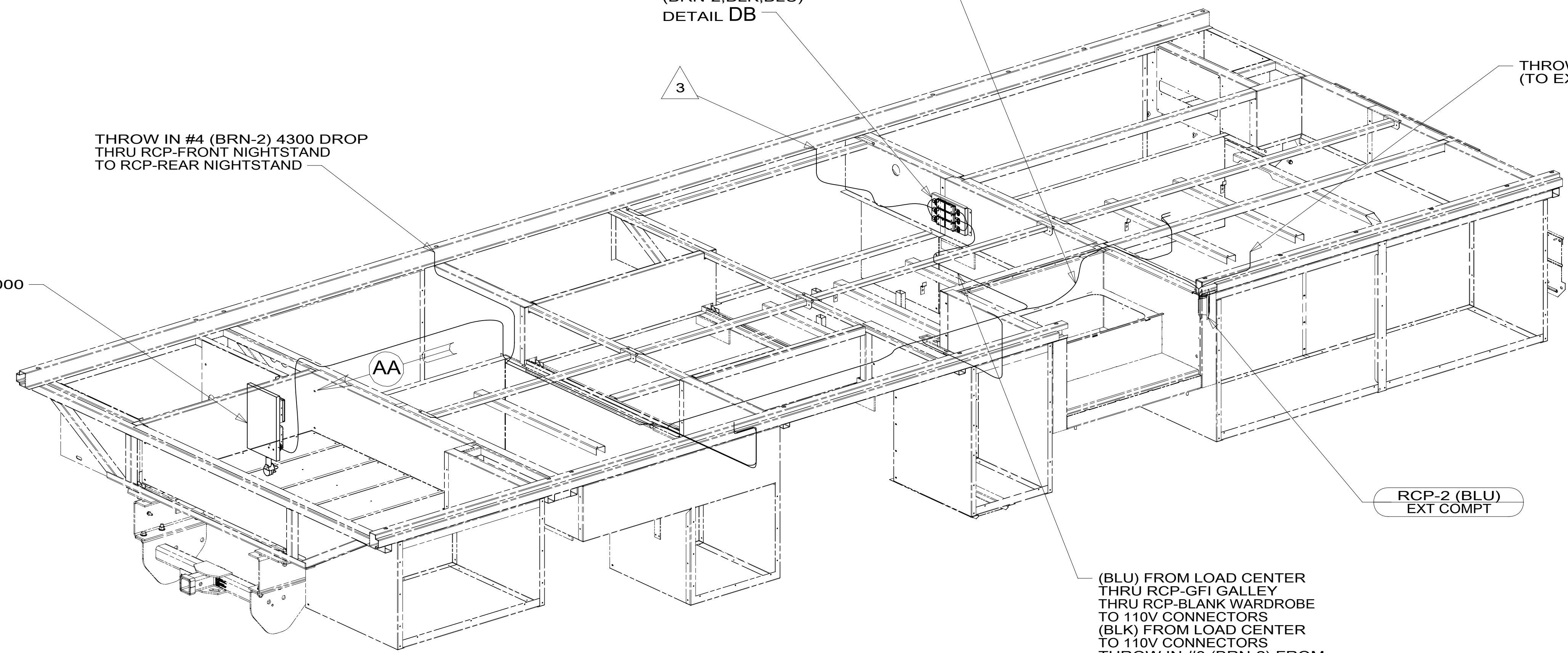
POWER CORD BOX ASM
000159448 / 327642-01-000

THROW IN #4 (BRN-2) 4300 DROP
THRU RCP-FRONT NIGHTSTAND
TO RCP-REAR NIGHTSTAND

THROW IN #1
FROM RCP-BLANK WARDROBE
TO RCP-EXTERIOR COMPARTMENT

110V CONNECTORS
(BRN-2,BLK,BLU)
DETAIL DB

THROW IN WIRE #4
(TO EXT ENT CTR) 3



(BLU) FROM LOAD CENTER
THRU RCP-GFI GALLEY
THRU RCP-BLANK WARDROBE
TO 110V CONNECTORS
(BLK) FROM LOAD CENTER
TO 110V CONNECTORS
THROW IN #3 (BRN-2) FROM
RCP-BLANK WARDROBE
TO 110V CONNECTORS

RCP-2 (BLU)
EXT COMPT

265 CODES/STANDARDS-CSA/CMVSS

1B1 CODES/STANDARDS USA

1B1 265



DSNR:	ALL DIMENSIONS ARE IN MILLIMETERS	
DFTR:		
UNSPECIFIED TOLERANCES:	MATERIAL:	
WHOLE DIM (X) : 3		
ONE-PLACE (X.X) : 1.5		
TWO-PLACE (X.XX) : 0.50		
ANGLE : 1°		
REFER TO ES0018 FOR FASTENER TIGHTENING GUIDELINES	WEIGHT: (LBS)	FIRST USED:
		19 E27PE

WIRING INSTL-BODY, 110V

SHEET:	ITEM/PART NO.:	REV:
1 OF 7	000164477 / 32957001000	

REF: 1 20-Jun-2019

- NOTES:
- 3 WIRE ROUTED THROUGH FLOOR IN THIS AREA.
 - 2. AT MINIMUM ALL WIRES TO BE SUPPORTED AND SECURED PER CODE REQUIREMENTS. USE CLAMP 10495 OR 10497 OR WIRE TIE 8343 OR 108046 AND SCREW G67-XX-XXX OR G56-XX-XXX AS APPROPRIATE FOR INSTALLATION.
 - 1. WIRES ROUTED UNDER FLOOR.

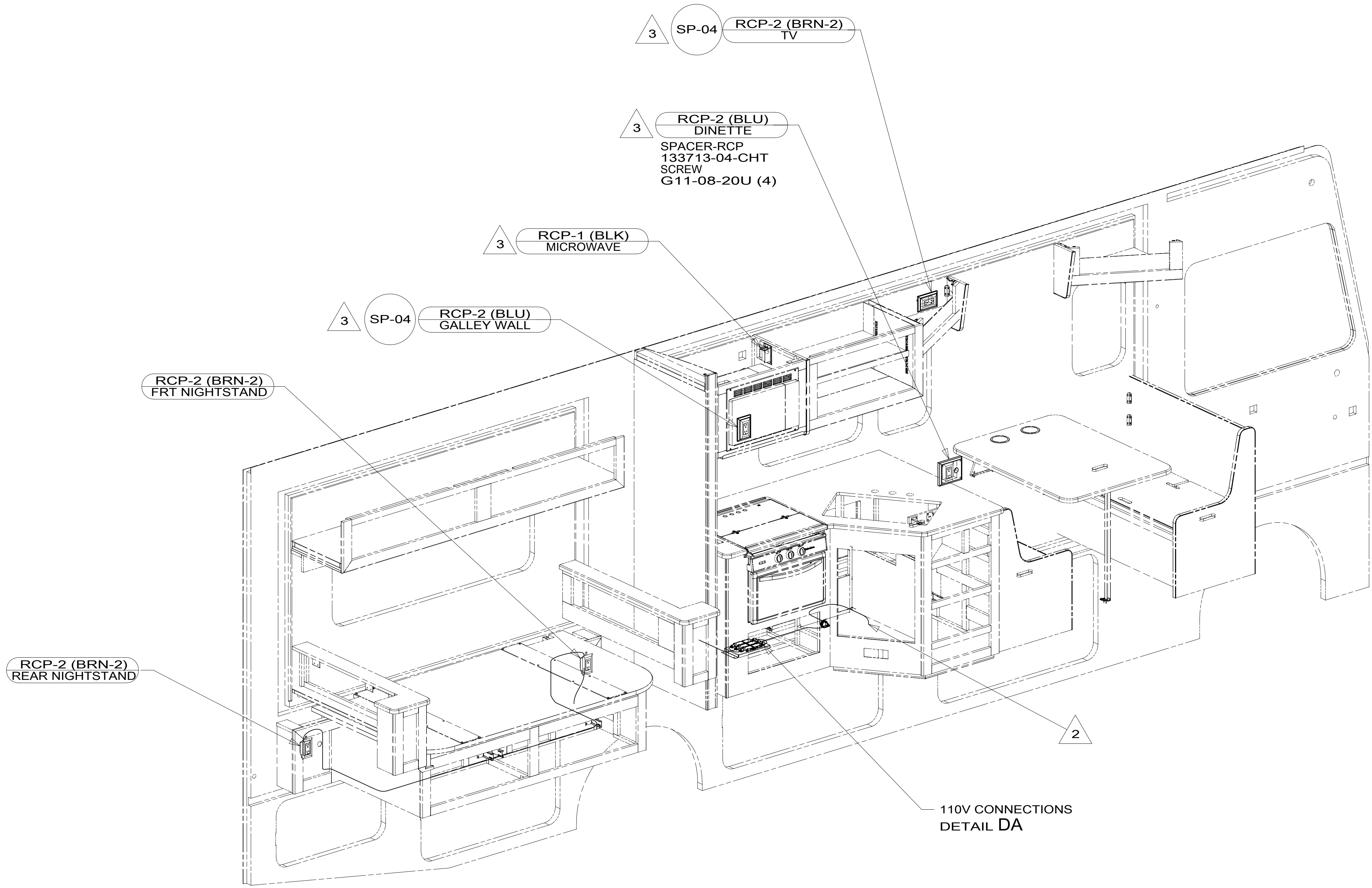
FOR ELECTRICAL TORQUE SPECIFICATIONS SEE DWG NO. 128783-01-000

FOR ELECTRICAL CALLOUTS SEE DWG NO. 121339-01-000

8 7 6 5 4 3 2 1

8 7 6 5 4 3 2 1

D
C
B
A



3 WIRE ROUTED IN SIDEWALL.

2 WIRE ROUTED THRU FLOOR IN THIS AREA.

1. AT MINIMUM ALL WIRES TO BE SUPPORTED AND SECURED PER CODE REQUIREMENTS. USE CLAMP 10495 OR 10497 OR WIRE TIE 8343 OR 108046 AND SCREW G67-XX-XXX OR G56-XX-XXX AS APPROPRIATE FOR INSTALLATION.

NOTES:

265 CODES/STANDARDS-CSA/CMVSS

1B1 CODES/STANDARDS USA

1B1 265

FOR ELECTRICAL TORQUE SPECIFICATIONS SEE DWG NO. 128783-01-000

FOR ELECTRICAL CALLOUTS SEE DWG NO. 121339-01-000

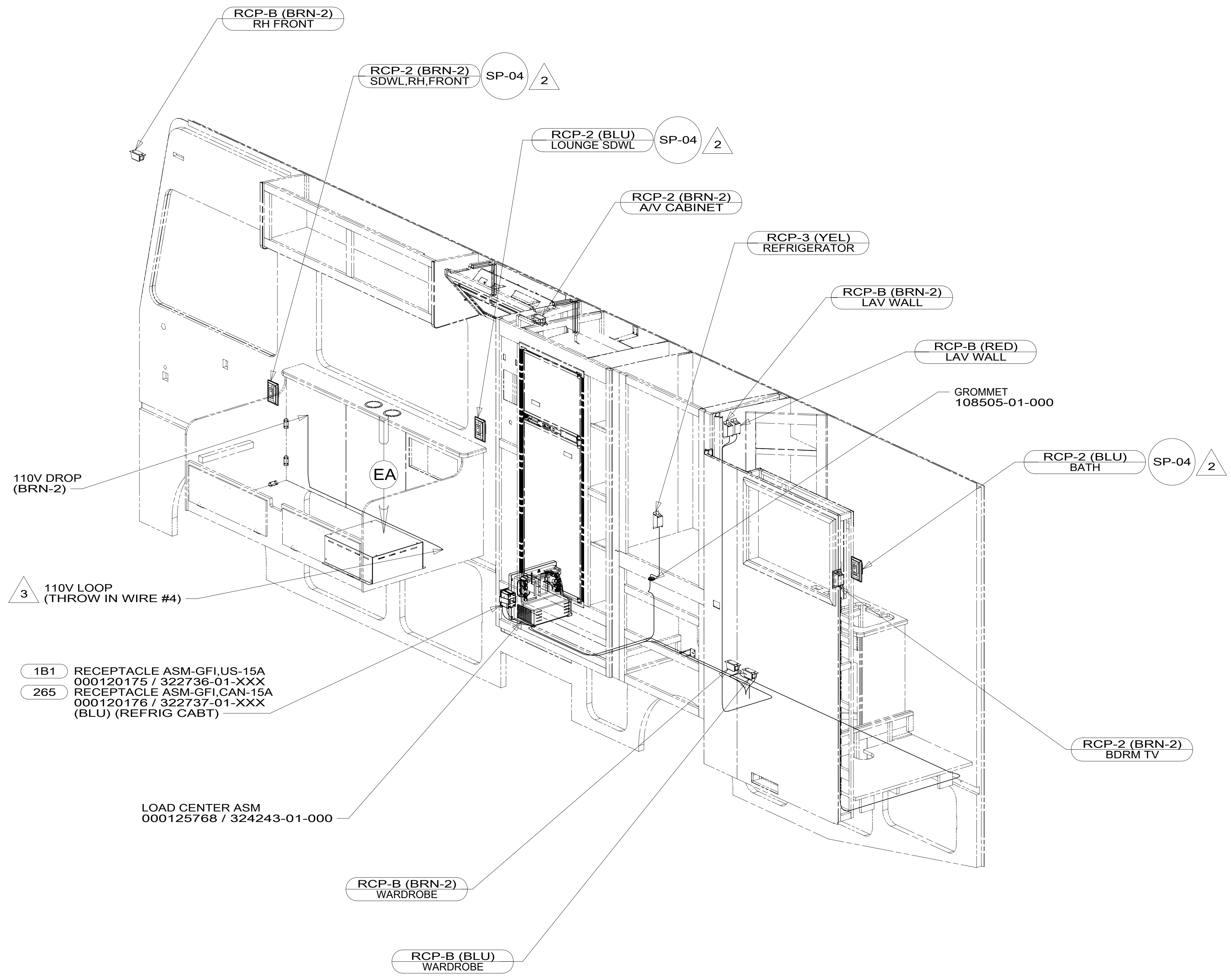
DESCRIPTION: WIRING INSTL-BODY, 110V

SHEET: 2 OF 7 ITEM/PART NO: 000164477 / 32957001000 REV

8 7 6 5 4 3 2 1 20-Jun-2019

8 7 6 5 4 3 2 1

D
C
B
A



- 1B1 RECEPTACLE ASM-GFI,US-15A
000120175 / 322736-01-XXX
- 265 RECEPTACLE ASM-GFI,CAN-15A
000120176 / 322737-01-XXX
(BLU) (REFRIG CABT)

- 3 ROUTE WIRE UNDER FLOOR TO THE RCP BLANK UNDER THE WARDROBE.
- 2 WIRE ROUTED IN SIDEWALL.
1. AT MINIMUM ALL WIRES TO BE SUPPORTED AND SECURED PER CODE REQUIREMENTS. USE CLAMP 10495 OR 10497 OR WIRE TIE 8343 OR 108046 AND SCREW G67-XX-XXX OR G56-XX-XXX AS APPROPRIATE FOR INSTALLATION.

NOTES:

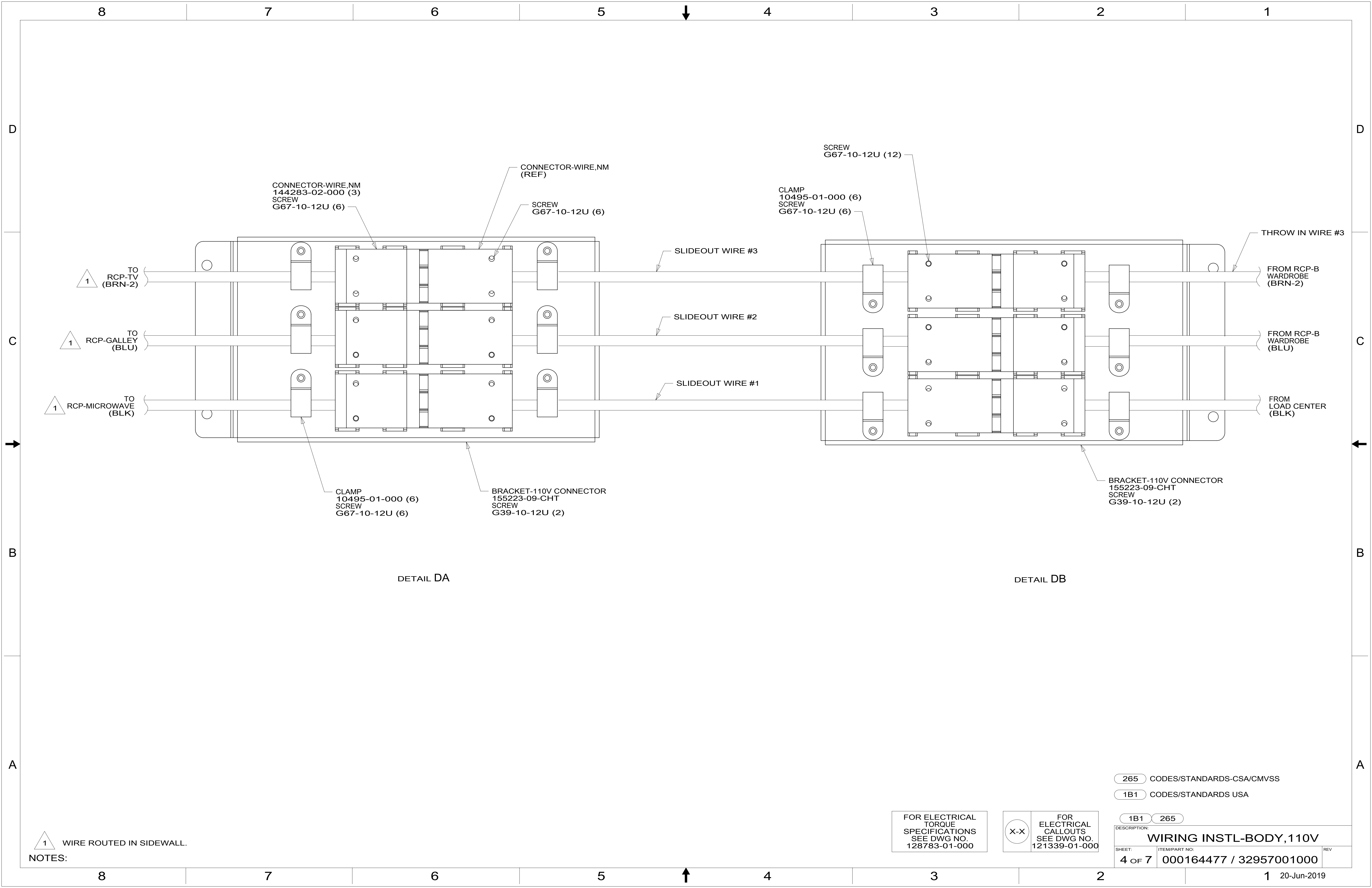
- 265 CODES/STANDARDS-CSA/CMVSS
- 1B1 CODES/STANDARDS USA

FOR ELECTRICAL TORQUE SPECIFICATIONS SEE DWG NO. 128783-01-000

FOR ELECTRICAL CALLOUTS SEE DWG NO. 121339-01-000

DESCRIPTION:	
WIRING INSTL-BODY, 110V	
SHEET:	ITEM/PART NO.:
3 OF 7	000164477 / 32957001000
REV	

8 7 6 5 4 3 2 1 20-Jun-2019



CONNECTOR-WIRE,NM
144283-02-000 (3)
SCREW
G67-10-12U (6)

CONNECTOR-WIRE,NM
(REF)

SCREW
G67-10-12U (6)

CLAMP
10495-01-000 (6)
SCREW
G67-10-12U (6)

SCREW
G67-10-12U (12)

BRACKET-110V CONNECTOR
155223-09-CHT
SCREW
G39-10-12U (2)

CLAMP
10495-01-000 (6)
SCREW
G67-10-12U (6)

BRACKET-110V CONNECTOR
155223-09-CHT
SCREW
G39-10-12U (2)

DETAIL DA

DETAIL DB

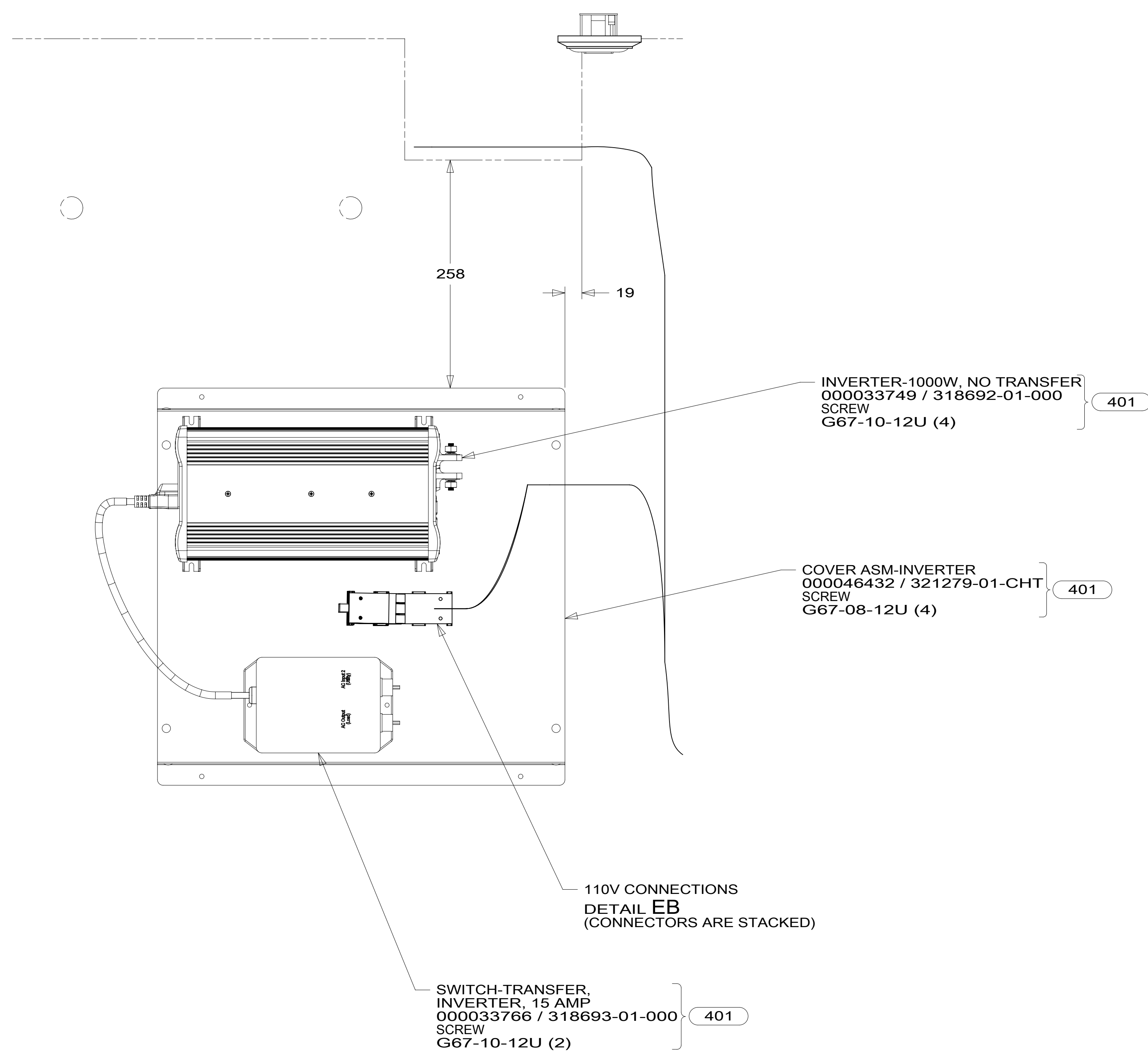
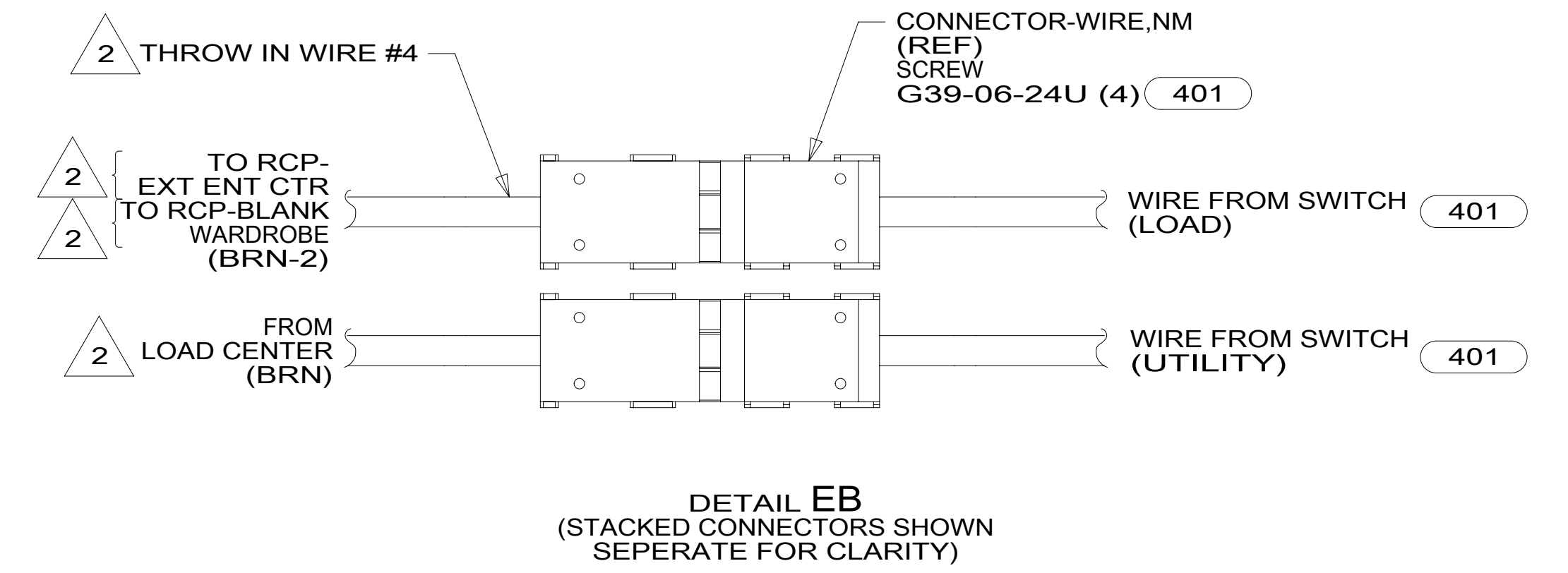
1 WIRE ROUTED IN SIDEWALL.
NOTES:

FOR ELECTRICAL
TORQUE
SPECIFICATIONS
SEE DWG NO.
128783-01-000

X-X
FOR ELECTRICAL
CALLOUTS
SEE DWG NO.
121339-01-000

- 265 CODES/STANDARDS-CSA/CMVSS
- 1B1 CODES/STANDARDS USA

DESCRIPTION: WIRING INSTL-BODY, 110V	
SHEET: 4 OF 7	ITEM/PART NO: 000164477 / 32957001000
REV	REV



2 WITHOUT INVERTER, THROW IN WIRE #4 (BRN-2) CONNECTS TO (BRN) FROM LOAD CENTER.

1. IF NO INVERTER, SECURE CONNECTORS BELOW FLOOR IN COMPARTMENT.

NOTES:

FOR ELECTRICAL TORQUE SPECIFICATIONS SEE DWG NO. 128783-01-000

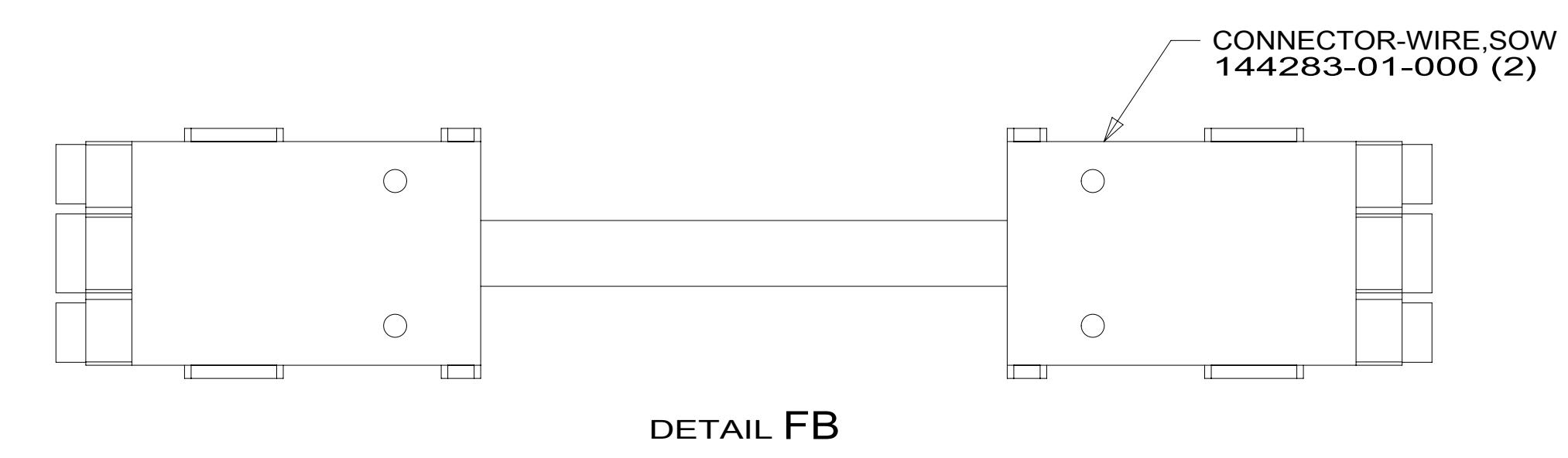
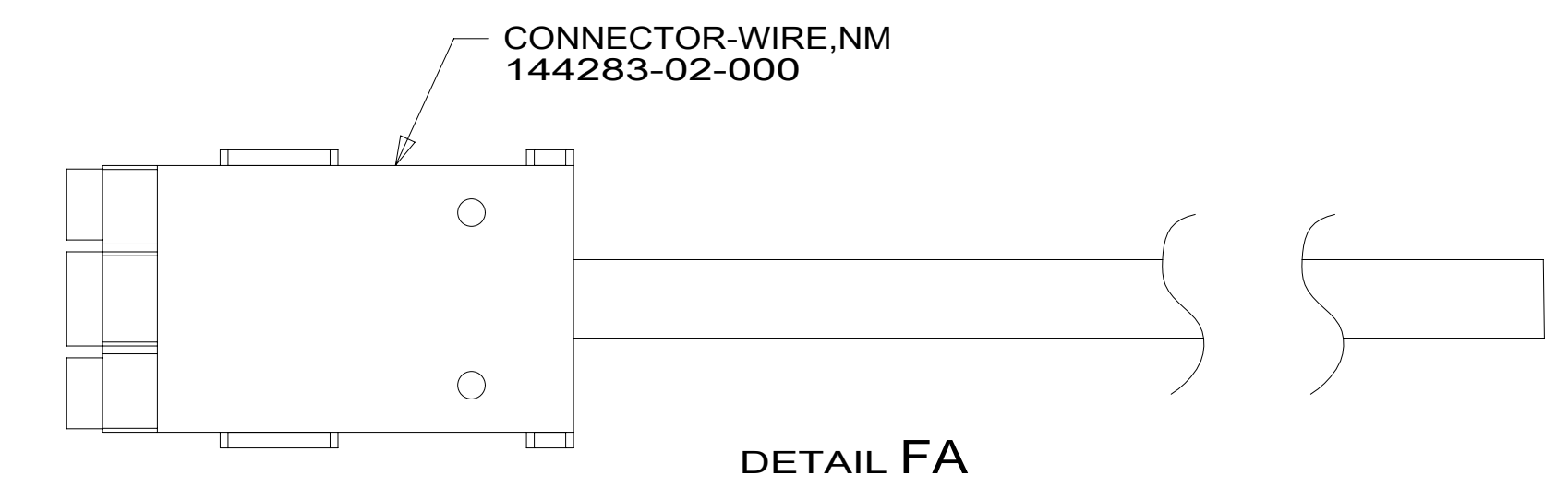
FOR ELECTRICAL CALLOUTS SEE DWG NO. 121339-01-000

- 401 INVERTER-DC/AC, 1000 WATT
- 265 CODES/STANDARDS-CSA/CMVSS
- 1B1 CODES/STANDARDS USA

DESCRIPTION: WIRING INSTL-BODY, 110V		
SHEET: 5 OF 7	ITEM/PART NO: 000164477 / 32957001000	REV

RED	1B1	136135-07-056	
	265	136136-07-056	
YEL	1B1	136131-05-030	
	265	136134-05-030	
BRN	1B1	136131-03-038	
	265	136134-03-038	
BLU	1B1	136131-02-090	2
	265	136134-02-090	2
MAIN	1B1	136137-01-071	4
	265	136138-01-071	4
BLK	1B1	136131-06-071	2
	265	136134-06-071	2
SLIDEOUT WIRE #1		136151-06-023	3
SLIDEOUT WIRE #2		136151-02-023	3
SLIDEOUT WIRE #3		136151-19-023	3
GROUND MAIN		178545-01-025	

THROW IN WIRE #1	1B1	136131-02-050	
	265	136134-02-050	
THROW IN WIRE #2	1B1	136131-19-050	
	265	136134-19-050	
THROW IN WIRE #3	1B1	136131-19-048	2
	265	136134-19-048	2
THROW IN WIRE #4	1B1	136131-19-225	2
	265	136134-19-225	2



- NOTES:
- 4 ATTACH ONE END OF MAIN TO LAD CENTER. COVER OTHER END OF MAIN CABLE ASM WITH 2000 MM OF CONDUIT 091234-02-000. SECURE WITH TAPE 8363-01-000.
 - 3 SEE DETAIL **FB** FOR CONNECTOR INSTALLATION.
 - 2 SEE DETAIL **FA** FOR CONNECTOR INSTALLATION.
 - 1. ALL GROUNDS WIRES TO BE COVERED WITH TUBING 8041-02-000.

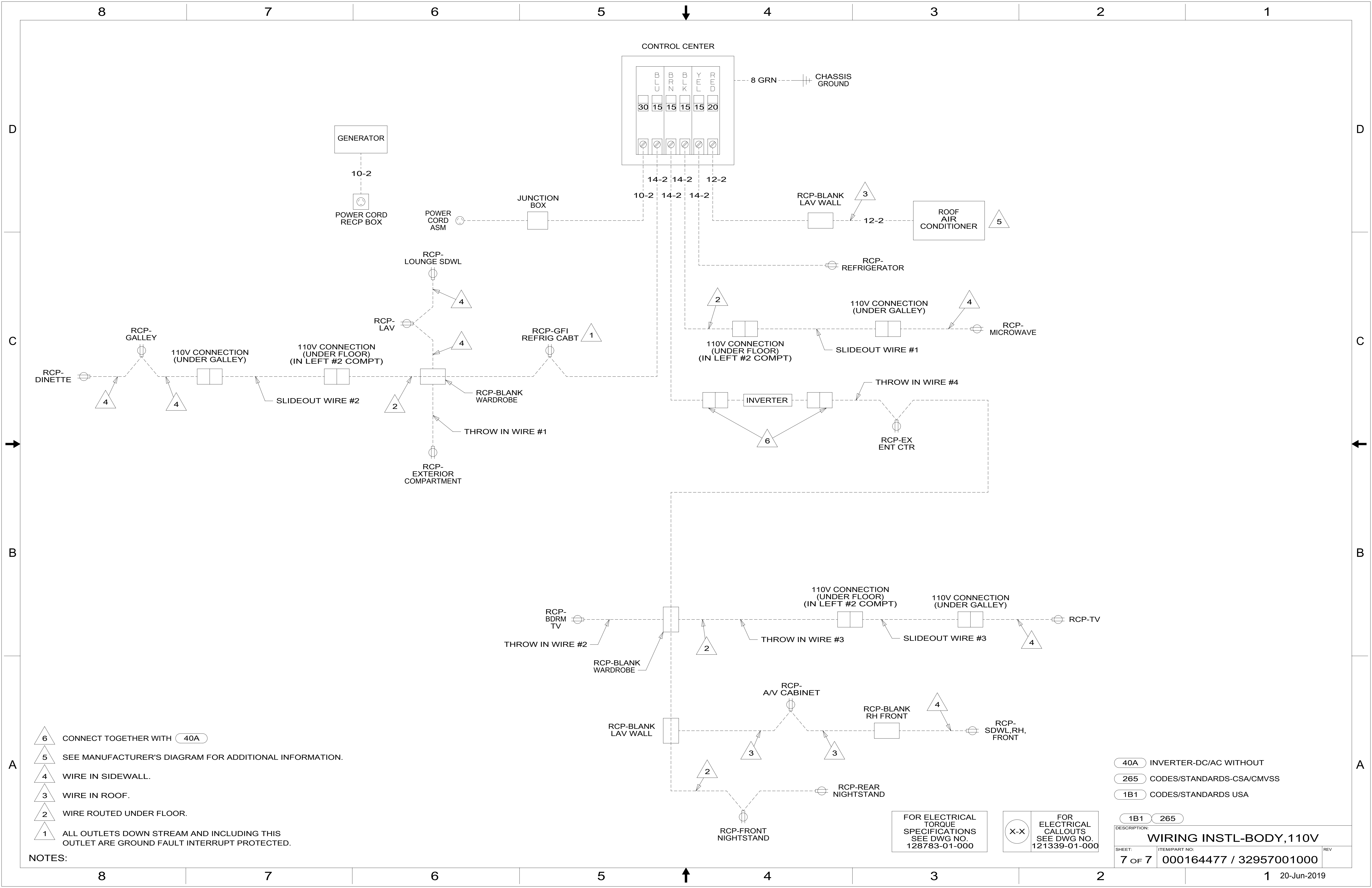
265 CODES/STANDARDS-CSA/CMVSS
 1B1 CODES/STANDARDS USA

FOR ELECTRICAL TORQUE SPECIFICATIONS SEE DWG NO. 128783-01-000

FOR ELECTRICAL CALLOUTS SEE DWG NO. 121339-01-000

DESCRIPTION: 1B1 265
WIRING INSTL-BODY, 110V

SHEET: 6 OF 7 ITEM/PART NO.: 000164477 / 32957001000 REV



- NOTES:
- 6 CONNECT TOGETHER WITH 40A
 - 5 SEE MANUFACTURER'S DIAGRAM FOR ADDITIONAL INFORMATION.
 - 4 WIRE IN SIDEWALL.
 - 3 WIRE IN ROOF.
 - 2 WIRE ROUTED UNDER FLOOR.
 - 1 ALL OUTLETS DOWN STREAM AND INCLUDING THIS OUTLET ARE GROUND FAULT INTERRUPT PROTECTED.

FOR ELECTRICAL TORQUE SPECIFICATIONS SEE DWG NO. 128783-01-000

FOR ELECTRICAL CALLOUTS SEE DWG NO. 121339-01-000

- 40A INVERTER-DC/AC WITHOUT
- 265 CODES/STANDARDS-CSA/CMVSS
- 1B1 CODES/STANDARDS USA

DESCRIPTION: WIRING INSTL-BODY, 110V		
SHEET: 7 OF 7	ITEM/PART NO: 000164477 / 32957001000	REV