

CABINET ASM-OVHD, DOOR (REF)

PLATE-WALL, DUAL COAX HORIZ 149557-09-CHT

CONNECTOR-F.90 RIGHT ANGLE 176986-01-000 (2)

SPLITTER-HDMI, 1X4 12VOLT 000158182 / 327358-01-000
 PLATE-ELECTRICAL 000165116 / 329375-01-CHT
 SCREW G11-08-08U (4)
 FASTENER-DUALLOCK 85774-01-000 (70 MM)
 85774-02-000 (70 MM)

CONVERTER-HDMI/CAT6 (TRANSMITTER) 178304-02-000

PLATE-WALL, POWER SUPPLY 179004-02-CHT

PANEL-COVER, BRACKET 194672-03-CHT
 SCREW G67-08-08U

RCP (REF)

WALL PLATE-BLANK, PLASTIC 192613-01-CHT

CLAMP 10497-02-000

AB

PANEL-COVER, BRACKET 194672-01-CHT
 SCREW G67-08-08U

CLAMP 10497-01-000

PANEL-COVER, BRACKET 000122894 / 323485-01-CHT
 SCREW G67-08-08U

COAX (BLU) TO ANTENNA PLATE

COAX (RED) TO ANTENNA PLATE

HDMI (ORG)

HDMI (HDMI SPLITTER TO CONVERTER)

HDMI (ORG-3)

HDMI TO INPUT

CAT6 TO CONVERTER

12V AND COAX FROM ROOF

110V (BRN-2) FROM ROOF TO OUTLET

COAX (GLD) TO SAT PREP PLATE

COAX (ORG) TO SAT PREP PLATE

HDMI (COIL IN OVHD FOR FUTURE USE)

12V TO HDMI SPLITTER

VIEW AB

1 ATTACH TO STICK WORK USING BRACKETS AND SCREWS THAT COME WITH CONVERTER.

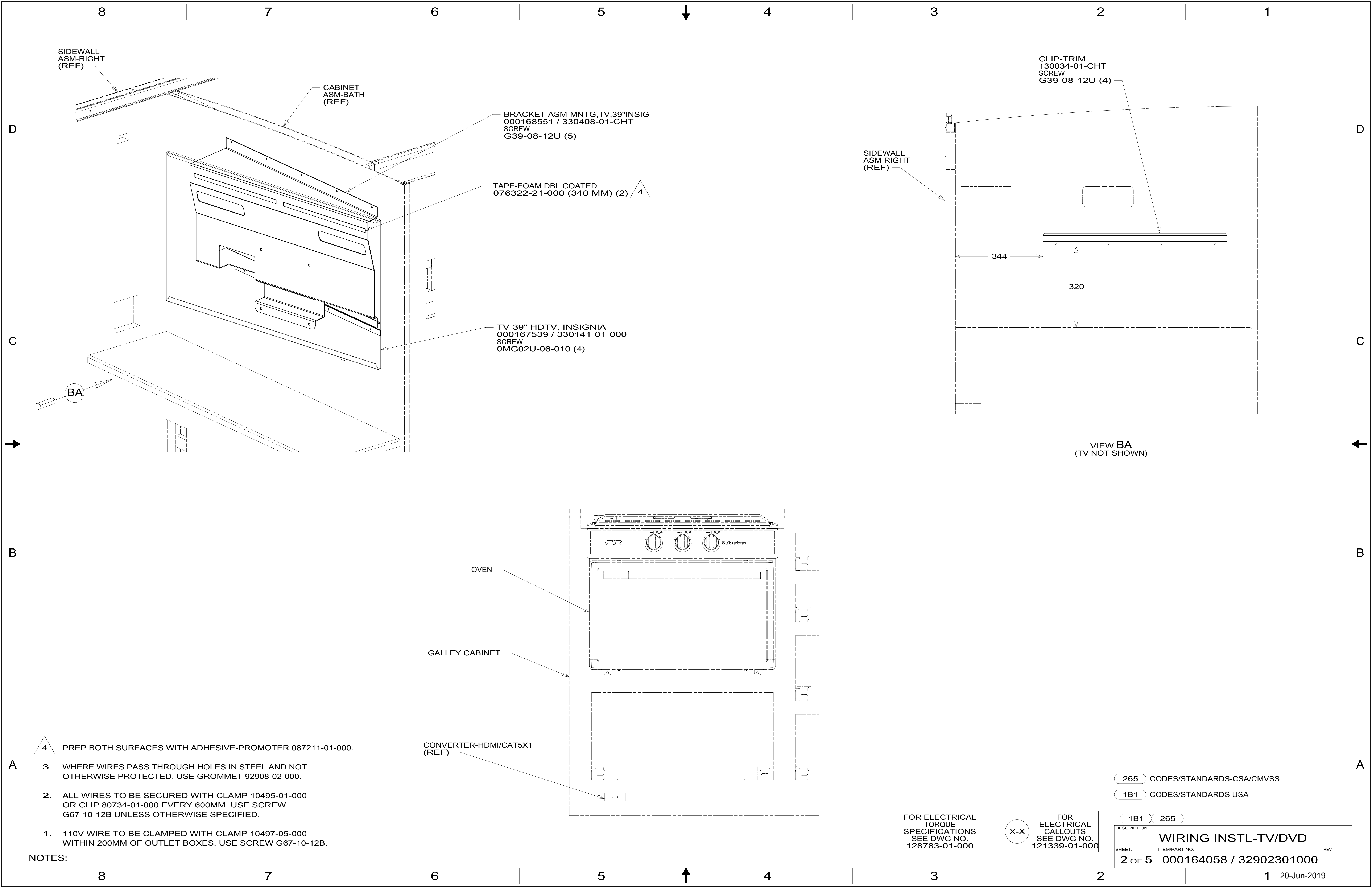
FOR ELECTRICAL TORQUE SPECIFICATIONS SEE DWG NO. 128783-01-000

FOR ELECTRICAL CALLOUTS SEE DWG NO. 121339-01-000

265 CODES/STANDARDS-CSA/CMVSS
 1B1 CODES/STANDARDS USA
 1B1 265



DSNR:		ALL DIMENSIONS ARE IN MILLIMETERS	
DFFR:		MATERIAL:	
UNSPECIFIED TOLERANCES:			
WHOLE DIM (X)	: 3		
ONE-PLACE (X.X)	: 1.5		
TWO-PLACE (X.XX)	: 0.50		
ANGLE	: 1°		
REFER TO ES0018 FOR FASTENER TIGHTENING GUIDELINES		WEIGHT: (LBS)	FIRST USED:
			19 E29VE
DESCRIPTION: WIRING INSTL-TV/DVD			
SHEET:	ITEM/PART NO.:	REV:	
1 OF 5	000164058 / 32902301000		



SIDEWALL
ASM-RIGHT
(REF)

CABINET
ASM-BATH
(REF)

BRACKET ASM-MNTG,TV,39"INSIG
000168551 / 330408-01-CHT
SCREW
G39-08-12U (5)

TAPE-FOAM,DBL COATED
076322-21-000 (340 MM) (2) 4

TV-39" HDTV, INSIGNIA
000167539 / 330141-01-000
SCREW
OMG02U-06-010 (4)

CLIP-TRIM
130034-01-CHT
SCREW
G39-08-12U (4)

SIDEWALL
ASM-RIGHT
(REF)

344

320

VIEW BA
(TV NOT SHOWN)

OVEN

GALLEY CABINET

CONVERTER-HDMI/CAT5X1
(REF)

4 PREP BOTH SURFACES WITH ADHESIVE-PROMOTER 087211-01-000.

3. WHERE WIRES PASS THROUGH HOLES IN STEEL AND NOT OTHERWISE PROTECTED, USE GROMMET 92908-02-000.

2. ALL WIRES TO BE SECURED WITH CLAMP 10495-01-000 OR CLIP 80734-01-000 EVERY 600MM. USE SCREW G67-10-12B UNLESS OTHERWISE SPECIFIED.

1. 110V WIRE TO BE CLAMPED WITH CLAMP 10497-05-000 WITHIN 200MM OF OUTLET BOXES, USE SCREW G67-10-12B.

NOTES:

FOR ELECTRICAL
TORQUE
SPECIFICATIONS
SEE DWG NO.
128783-01-000

FOR
ELECTRICAL
CALLOUTS
SEE DWG NO.
121339-01-000

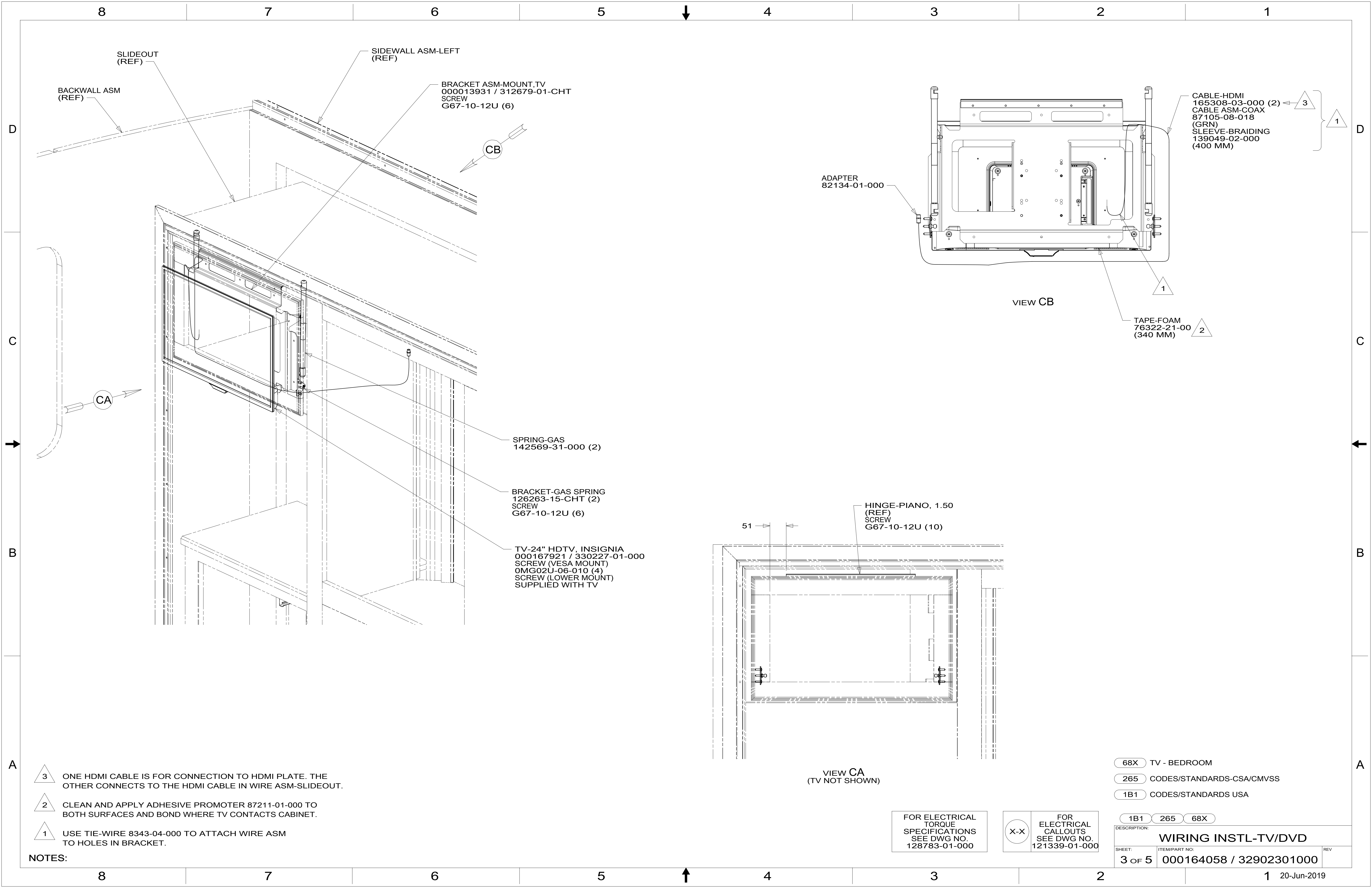
265 CODES/STANDARDS-CSA/CMVSS

1B1 CODES/STANDARDS USA

1B1 265

DESCRIPTION:
WIRING INSTL-TV/DVD

SHEET: **2 OF 5** ITEM/PART NO: **000164058 / 32902301000** REV



SLIDEOUT (REF)
 BACKWALL ASM (REF)
 SIDEWALL ASM-LEFT (REF)
 BRACKET ASM-MOUNT-TV
 000013931 / 312679-01-CHT
 SCREW
 G67-10-12U (6)

CB

ADAPTER
 82134-01-000

CABLE-HDMI
 165308-03-000 (2)
 CABLE ASM-COAX
 87105-08-018
 (GRN)
 SLEEVE-BRAIDING
 139049-02-000
 (400 MM)

VIEW CB

TAPE-FOAM
 76322-21-00
 (340 MM)

SPRING-GAS
 142569-31-000 (2)

BRACKET-GAS SPRING
 126263-15-CHT (2)
 SCREW
 G67-10-12U (6)

TV-24" HDTV, INSIGNIA
 000167921 / 330227-01-000
 SCREW (VESA MOUNT)
 0MG02U-06-010 (4)
 SCREW (LOWER MOUNT)
 SUPPLIED WITH TV

HINGE-PIANO, 1.50
 (REF)
 SCREW
 G67-10-12U (10)

VIEW CA
 (TV NOT SHOWN)

- NOTES:
- 3 ONE HDMI CABLE IS FOR CONNECTION TO HDMI PLATE. THE OTHER CONNECTS TO THE HDMI CABLE IN WIRE ASM-SLIDEOUT.
 - 2 CLEAN AND APPLY ADHESIVE PROMOTER 87211-01-000 TO BOTH SURFACES AND BOND WHERE TV CONTACTS CABINET.
 - 1 USE TIE-WIRE 8343-04-000 TO ATTACH WIRE ASM TO HOLES IN BRACKET.

FOR ELECTRICAL TORQUE SPECIFICATIONS SEE DWG NO. 128783-01-000

FOR ELECTRICAL CALLOUTS SEE DWG NO. 121339-01-000

- 68X TV - BEDROOM
- 265 CODES/STANDARDS-CSA/CMVSS
- 1B1 CODES/STANDARDS USA

DESCRIPTION: WIRING INSTL-TV/DVD		
1B1	265	68X
SHEET: 3 OF 5	ITEM/PART NO: 000164058 / 32902301000	REV

8 7 6 5 4 3 2 1

D
C
B
A

D
C
B
A

RIGHT SIDEWALL
(REF)

ENTERTAINMENT CTR COMPL-TV
000004363 / 312113-01-XXX

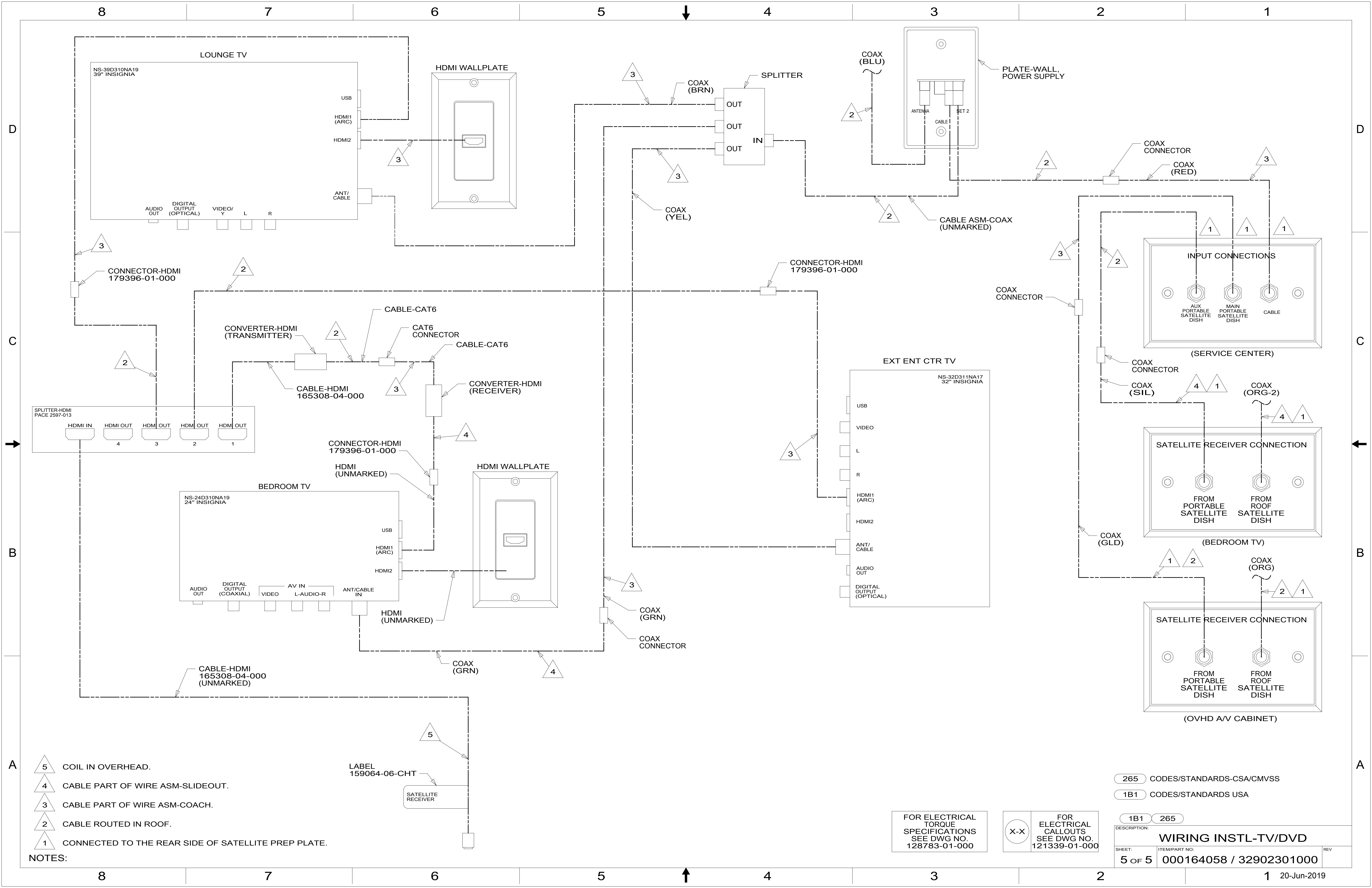
265 CODES/STANDARDS-CSA/CMVSS
1B1 CODES/STANDARDS USA

FOR ELECTRICAL
TORQUE
SPECIFICATIONS
SEE DWG NO.
128783-01-000

FOR
ELECTRICAL
CALLOUTS
SEE DWG NO.
121339-01-000

DESCRIPTION:		1B1	265
WIRING INSTL-TV/DVD			
SHEET:	ITEM/PART NO.:	REV	
4 OF 5	000164058 / 32902301000		

8 7 6 5 4 3 2 1 20-Jun-2019



- NOTES:
- 5 COIL IN OVERHEAD.
 - 4 CABLE PART OF WIRE ASM-SLIDEOUT.
 - 3 CABLE PART OF WIRE ASM-COACH.
 - 2 CABLE ROUTED IN ROOF.
 - 1 CONNECTED TO THE REAR SIDE OF SATELLITE PREP PLATE.

LABEL
159064-06-CHT
SATELLITE RECEIVER

FOR ELECTRICAL TORQUE SPECIFICATIONS SEE DWG NO. 128783-01-000

FOR ELECTRICAL CALLOUTS SEE DWG NO. 121339-01-000

265 CODES/STANDARDS-CSA/CMVSS
1B1 CODES/STANDARDS USA

DESCRIPTION: 1B1 265
WIRING INSTL-TV/DVD
SHEET: 5 OF 5 ITEM/PART NO: 000164058 / 32902301000 REV