

- NOTES:
- 4 CUT VISOR WIRING TO 300 MM BEFORE CONNECTING.
 - 3 SEE SHEET 9 FOR ADDITIONAL INFORMATION ON LOFT BED.
 - 2 USE TAPE 8363-03-000 TO SECURE WIRES IN A-POST.
 - 1. WINNEBAGO WIRE ASSEMBLIES ARE SHOWN FOR CLARITY.

FOR ELECTRICAL TORQUE SPECIFICATIONS SEE DWG NO. 128783-01-000

FOR ELECTRICAL CALLOUTS SEE DWG NO. 121339-01-000

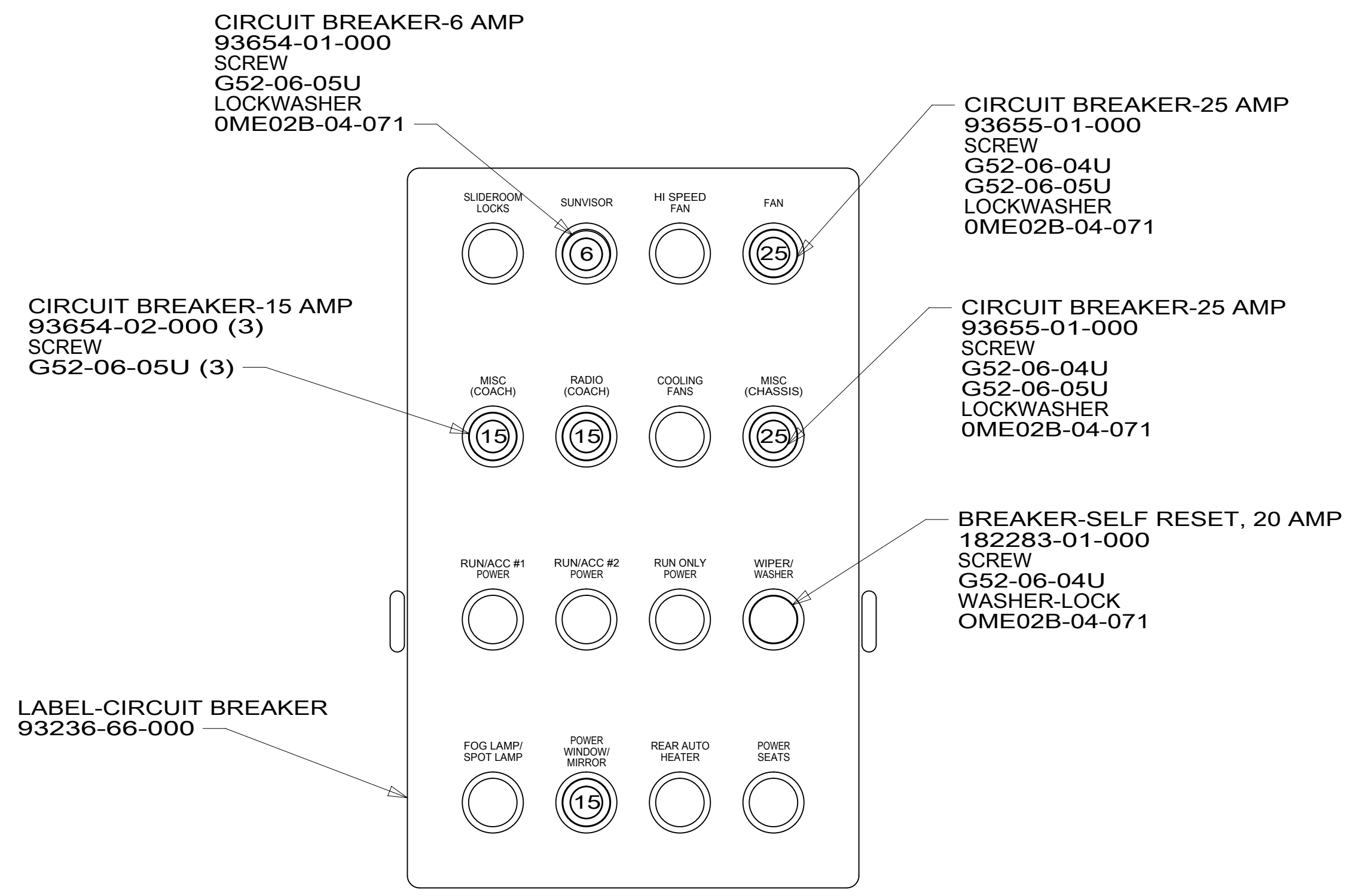
45D LOFT BED - WITHOUT
 45B LOFT BED
 265 CODES/STANDARDS-CSA/CMVSS
 1B1 CODES/STANDARDS USA

1B1 265

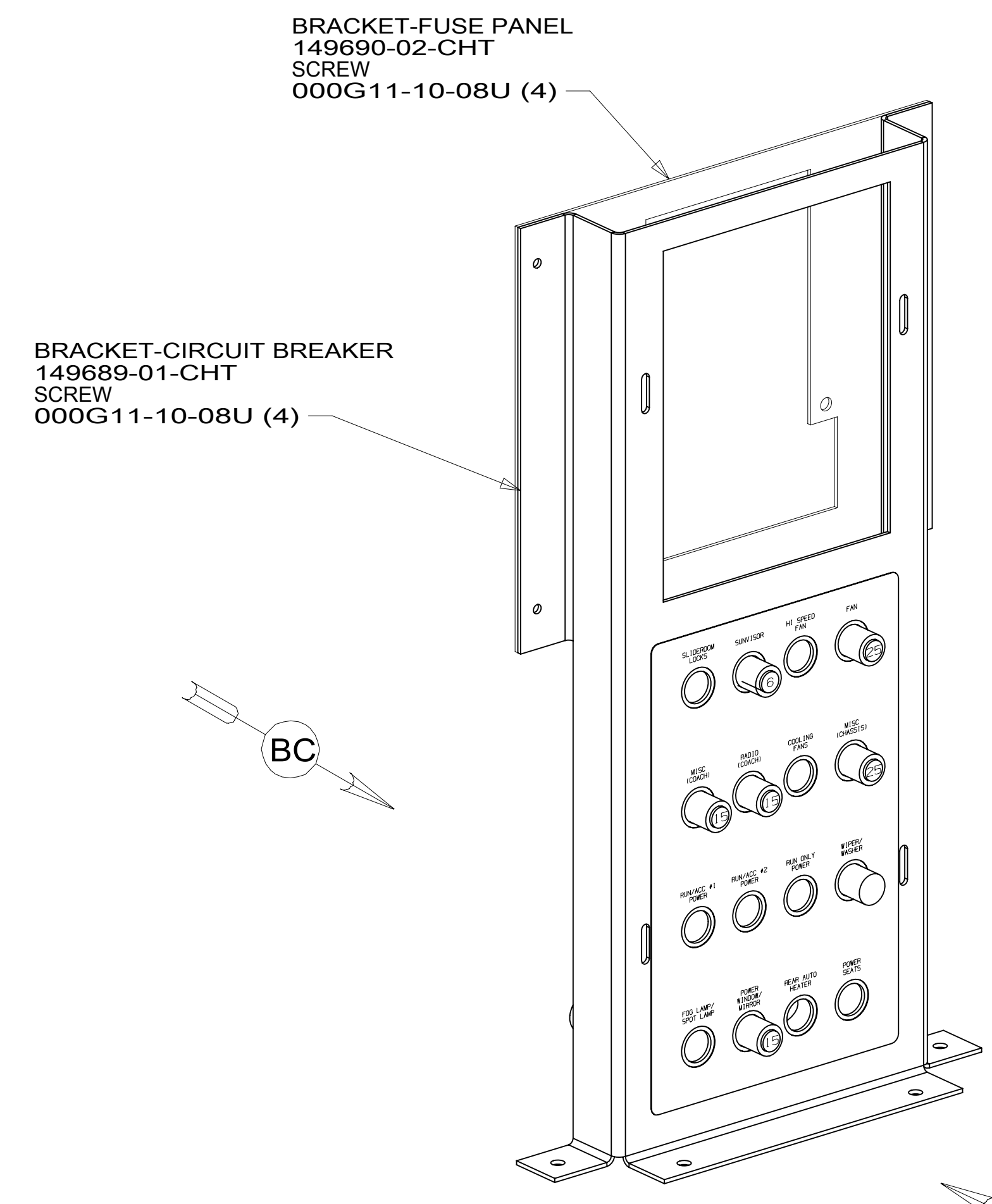
WINNEBAGO
 COPYRIGHT 2016 WINNEBAGO INDUSTRIES, INC.

DSNR:	ALL DIMENSIONS ARE IN MILLIMETERS
DFFR:	
UNSPECIFIED TOLERANCES:	MATERIAL:
WHOLE DIM (X) : 3	
ONE-PLACE (X.X) : 1.5	
TWO-PLACE (X.XX) : 0.50	
ANGLE : 1°	
REFER TO ES0018 FOR FASTENER TIGHTENING GUIDELINES	WEIGHT: (LBS) FIRST USED:
	19 E-SER
DESCRIPTION:	
WIRING INSTL-FRONT END	
SHEET: 1 OF 10	ITEM/PART NO: 000163937 / 32896101000
REF:	REV:

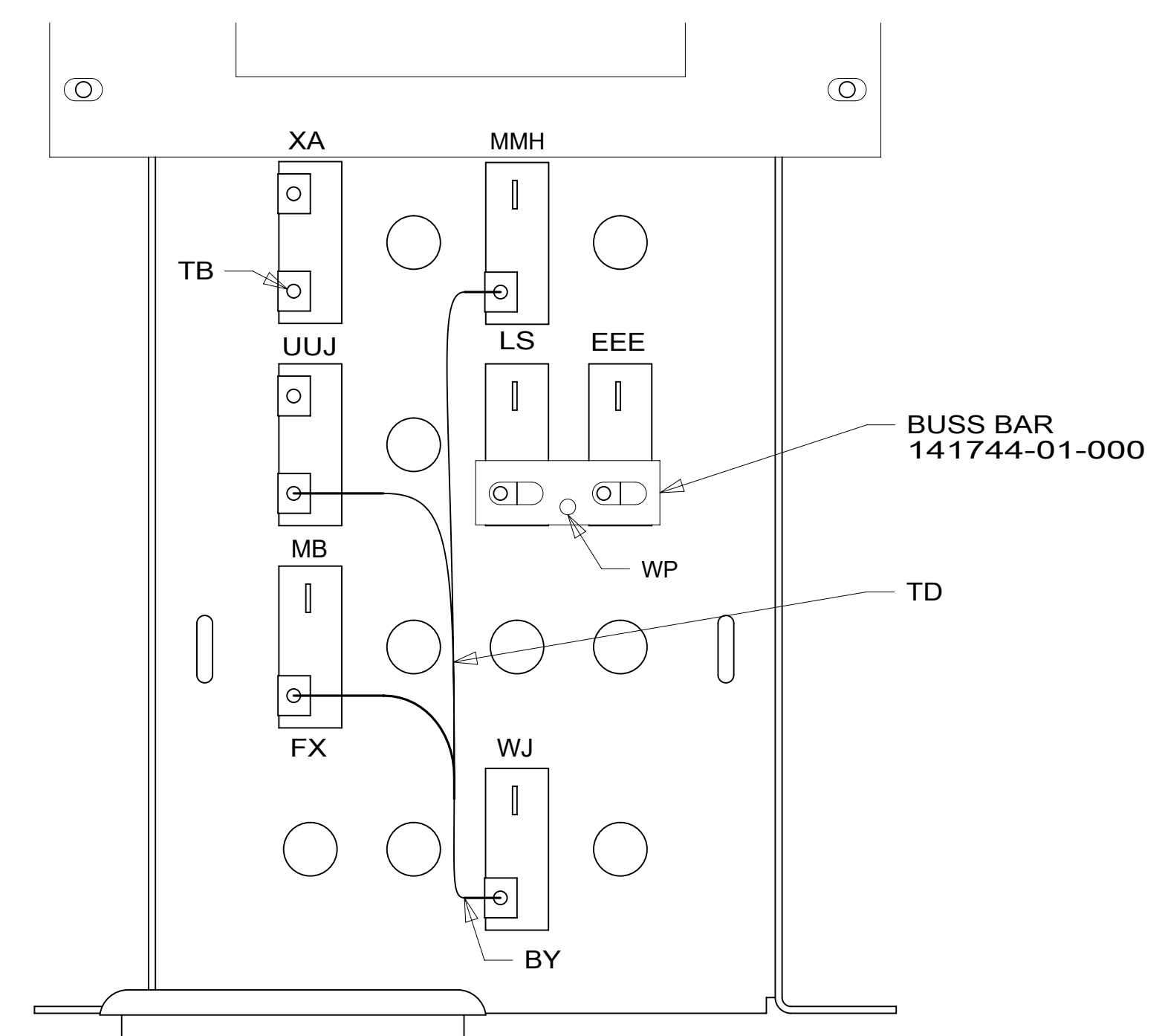
8 7 6 5 4 3 2 1



VIEW BB



DETAIL BA



VIEW BC

1 ALL CIRCUITS ARE IN WIRE ASM-IP,MAIN.
NOTES:

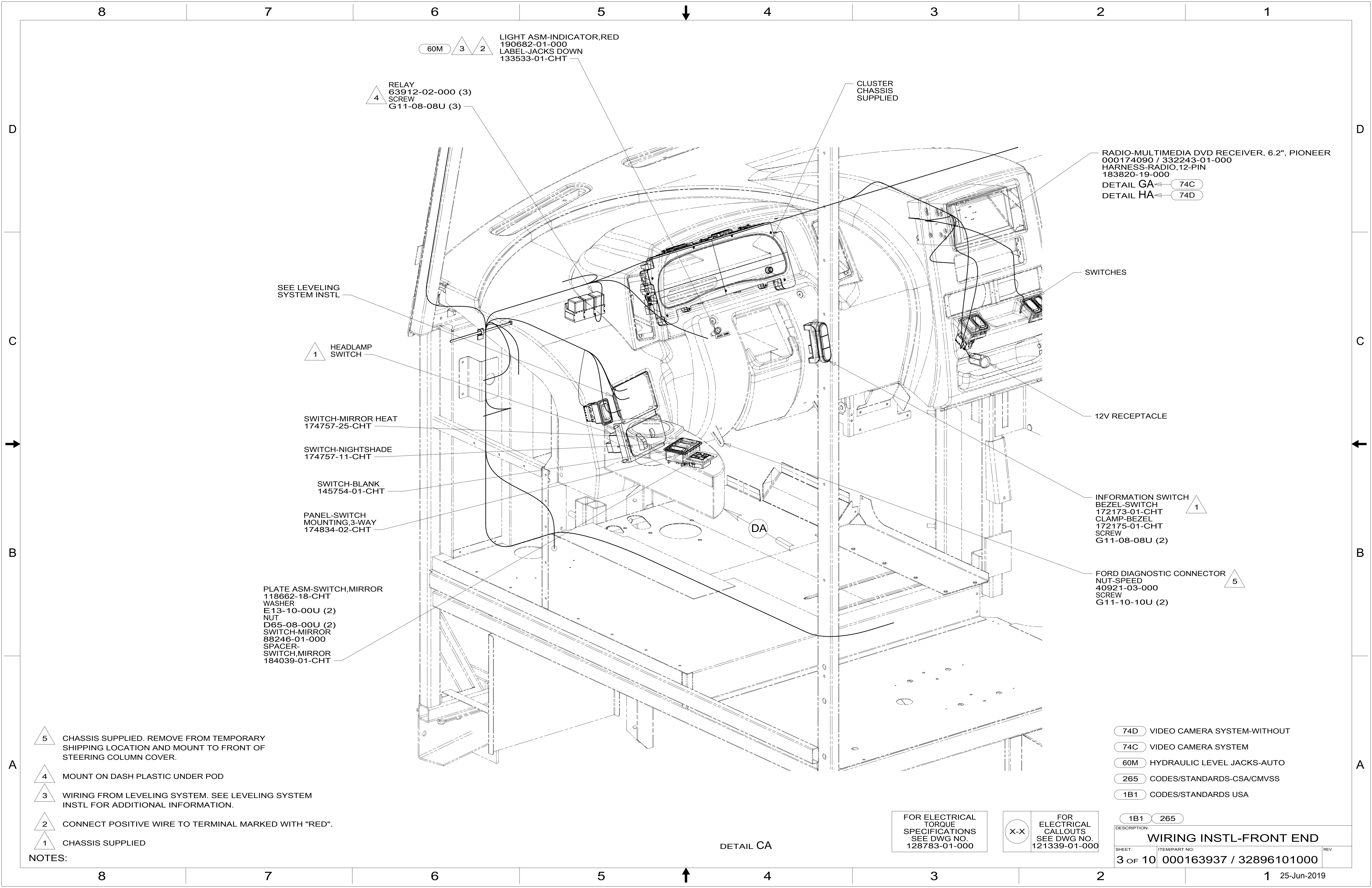
FOR ELECTRICAL TORQUE SPECIFICATIONS SEE DWG NO. 128783-01-000

FOR ELECTRICAL CALLOUTS SEE DWG NO. 121339-01-000

- 265 CODES/STANDARDS-CSA/CMVSS
- 1B1 CODES/STANDARDS USA

DESCRIPTION:		1B1 265
WIRING INSTL-FRONT END		
SHEET:	ITEM/PART NO:	REV
2 OF 10	000163937 / 32896101000	

8 7 6 5 4 3 2 1 25-Jun-2019



- NOTES:
- 5 CHASSIS SUPPLIED. REMOVE FROM TEMPORARY SHIPPING LOCATION AND MOUNT TO FRONT OF STEERING COLUMN COVER.
 - 4 MOUNT ON DASH PLASTIC UNDER POD
 - 3 WIRING FROM LEVELING SYSTEM. SEE LEVELING SYSTEM INSTL FOR ADDITIONAL INFORMATION.
 - 2 CONNECT POSITIVE WIRE TO TERMINAL MARKED WITH "RED".
 - 1 CHASSIS SUPPLIED

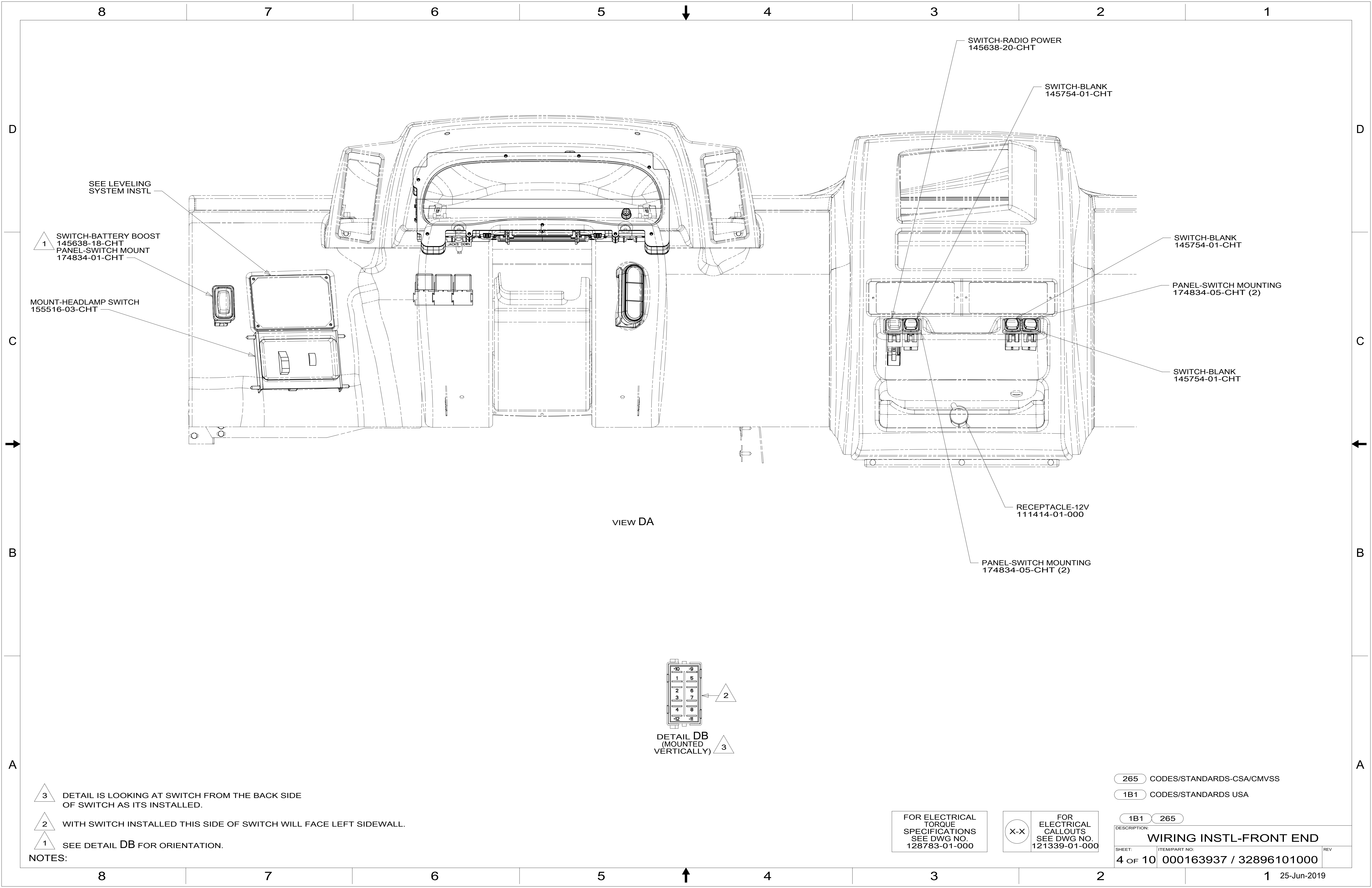
- 74D VIDEO CAMERA SYSTEM-WITHOUT
- 74C VIDEO CAMERA SYSTEM
- 60M HYDRAULIC LEVEL JACKS-AUTO
- 265 CODES/STANDARDS-CSA/CMVSS
- 1B1 CODES/STANDARDS USA

FOR ELECTRICAL TORQUE SPECIFICATIONS SEE DWG NO. 128783-01-000

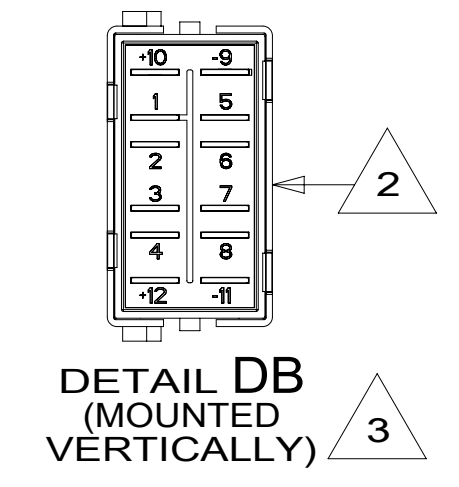
X-X FOR ELECTRICAL CALLOUTS SEE DWG NO. 121339-01-000

DESCRIPTION:	
1B1 265	
WIRING INSTL-FRONT END	
SHEET:	ITEM/PART NO. REV
3 OF 10	000163937 / 32896101000

DETAIL CA



VIEW DA



- NOTES:
- 3 DETAIL IS LOOKING AT SWITCH FROM THE BACK SIDE OF SWITCH AS ITS INSTALLED.
 - 2 WITH SWITCH INSTALLED THIS SIDE OF SWITCH WILL FACE LEFT SIDEWALL.
 - 1 SEE DETAIL DB FOR ORIENTATION.

FOR ELECTRICAL TORQUE SPECIFICATIONS SEE DWG NO. 128783-01-000

FOR ELECTRICAL CALLOUTS SEE DWG NO. 121339-01-000

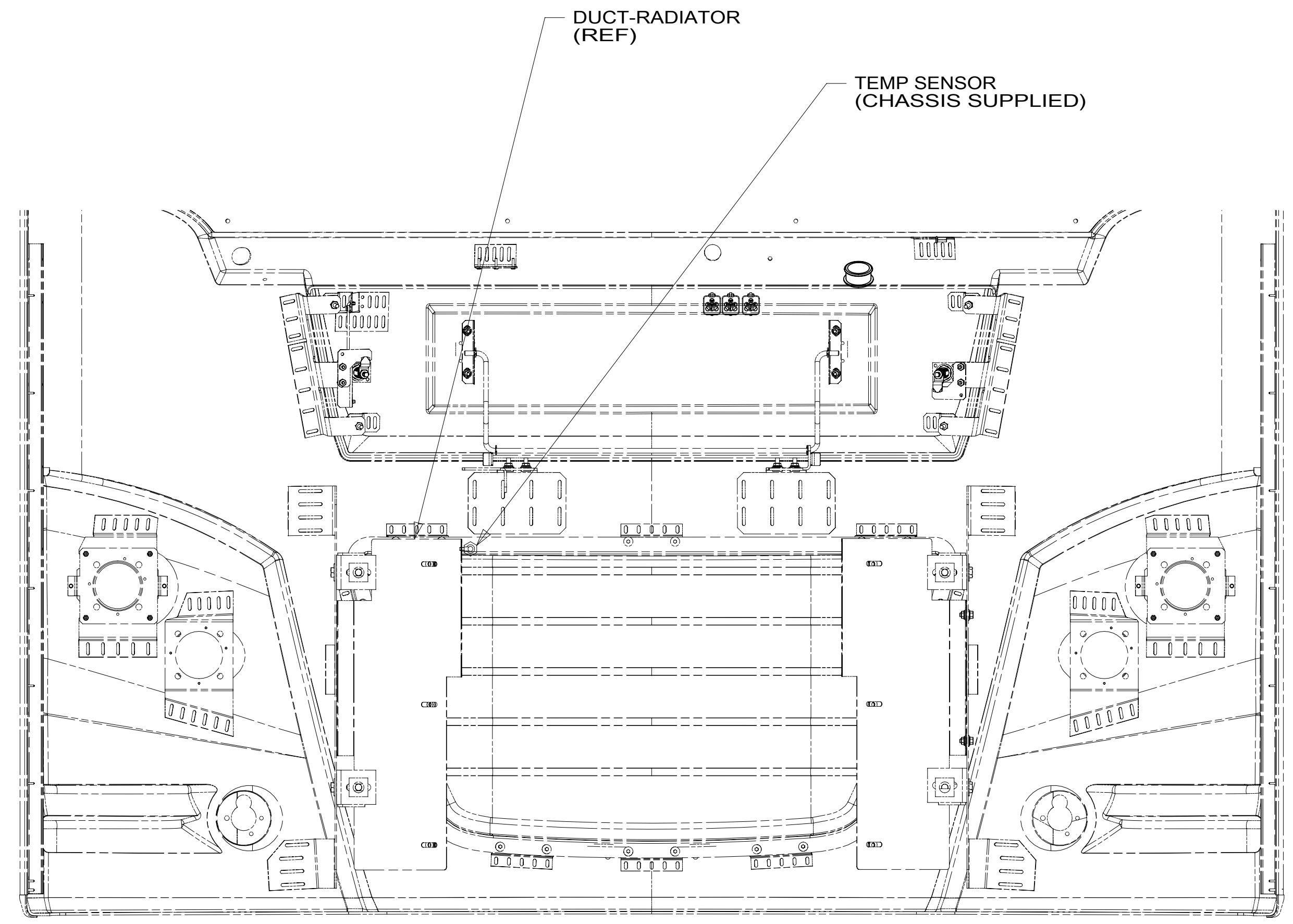
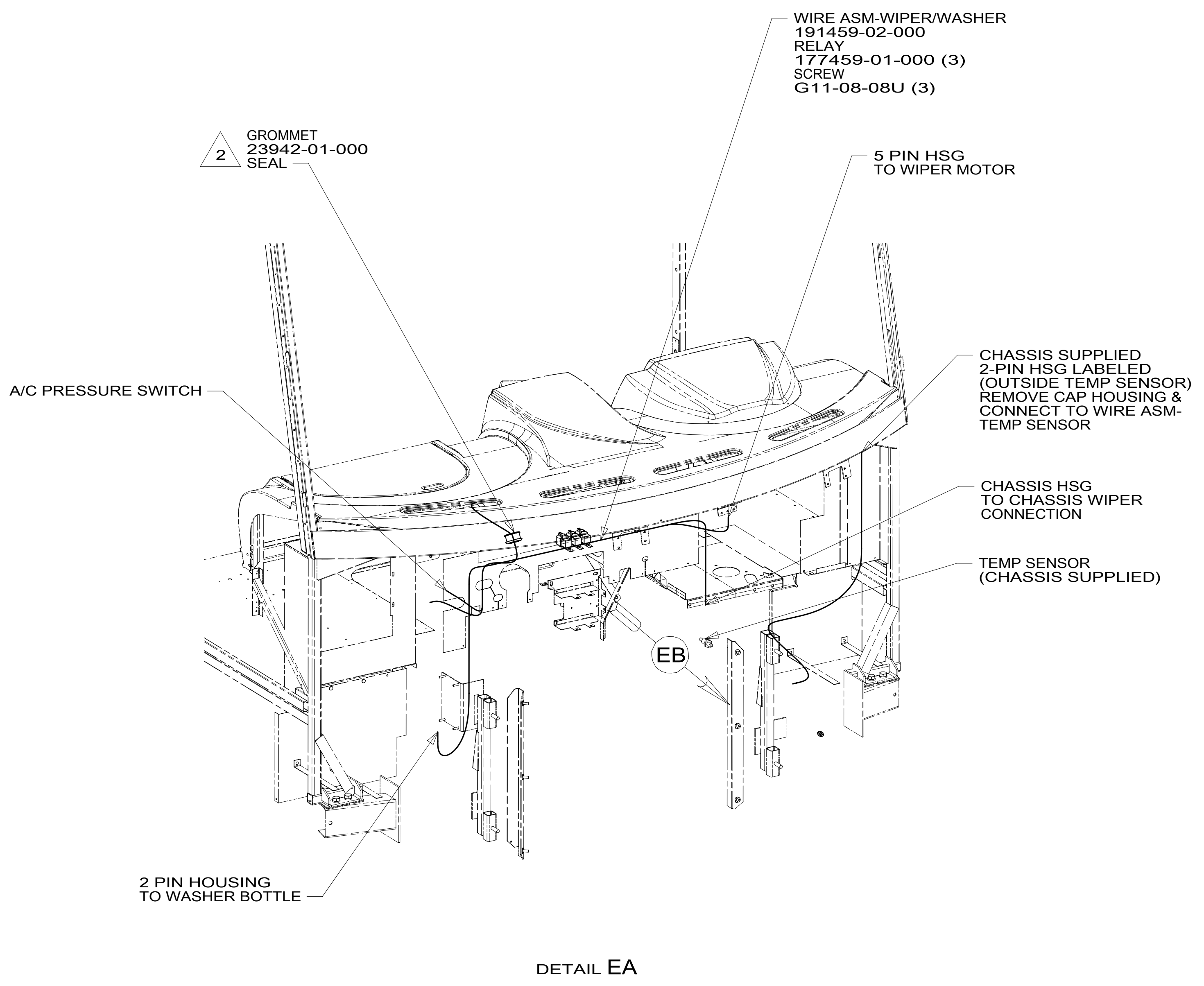
- 265 CODES/STANDARDS-CSA/CMVSS
- 1B1 CODES/STANDARDS USA

DESCRIPTION:		1B1	265
WIRING INSTL-FRONT END			
SHEET:	ITEM/PART NO.:	REV	
4 OF 10	000163937 / 32896101000		

8 7 6 5 4 3 2 1

D
C
B
A

D
C
B
A



- 2 ROUTE WIRES THROUGH HOLE IN STEEL.
1. GATHER ALL EXCESS WIRE AFTER MAKING ALL CONNECTIONS.
BUNDLE AND SECURE WITH WIRE TIE 8343-01-000 OR 93147-01-000.

NOTES:

FOR ELECTRICAL TORQUE SPECIFICATIONS SEE DWG NO. 128783-01-000

FOR ELECTRICAL CALLOUTS SEE DWG NO. 121339-01-000

265 CODES/STANDARDS-CSA/CMVSS
1B1 CODES/STANDARDS USA

DESCRIPTION:	
1B1 265	
WIRING INSTL-FRONT END	
SHEET:	ITEM/PART NO:
5 of 10	000163937 / 32896101000
REV	

8 7 6 5 4 3 2 1 25-Jun-2019

8

7

6

5

4

3

2

1

ANTENNA-RADIO
 90944-02-000
 CABLE ASM-ANTENNA
 90944-03-000
 BRACKET-ANTENNA
 115916-01-CHT
 SCREW
 G39-08-08U (2)

2 4

74C CAMERA-SIDE, RIGHT
 000128127 / 324903-01-000

1

3

CAMERA-SIDE, LEFT
 000128122 / 324902-01-000 74C

- NOTES:
- 4 USE HOLE IN BRACKET AS GUIDE TO DRILL 13 MM DIAMETER HOLE IN FIBERGLASS.
 - 3 TO RADIO.
 - 2 SEAL AROUND ANTENNA BASE.
 - 1 ROUTE CABLES ALONG A-POST, UNDER TRIM COVER.

- 74C VIDEO CAMERA SYSTEM
- 265 CODES/STANDARDS-CSA/CMVSS
- 1B1 CODES/STANDARDS USA

FOR ELECTRICAL TORQUE SPECIFICATIONS SEE DWG NO. 128783-01-000

FOR ELECTRICAL CALLOUTS SEE DWG NO. 121339-01-000

DESCRIPTION:	1B1 265	
WIRING INSTL-FRONT END		
SHEET:	ITEM/PART NO:	REV
6 OF 10	000163937 / 32896101000	

8

7

6

5

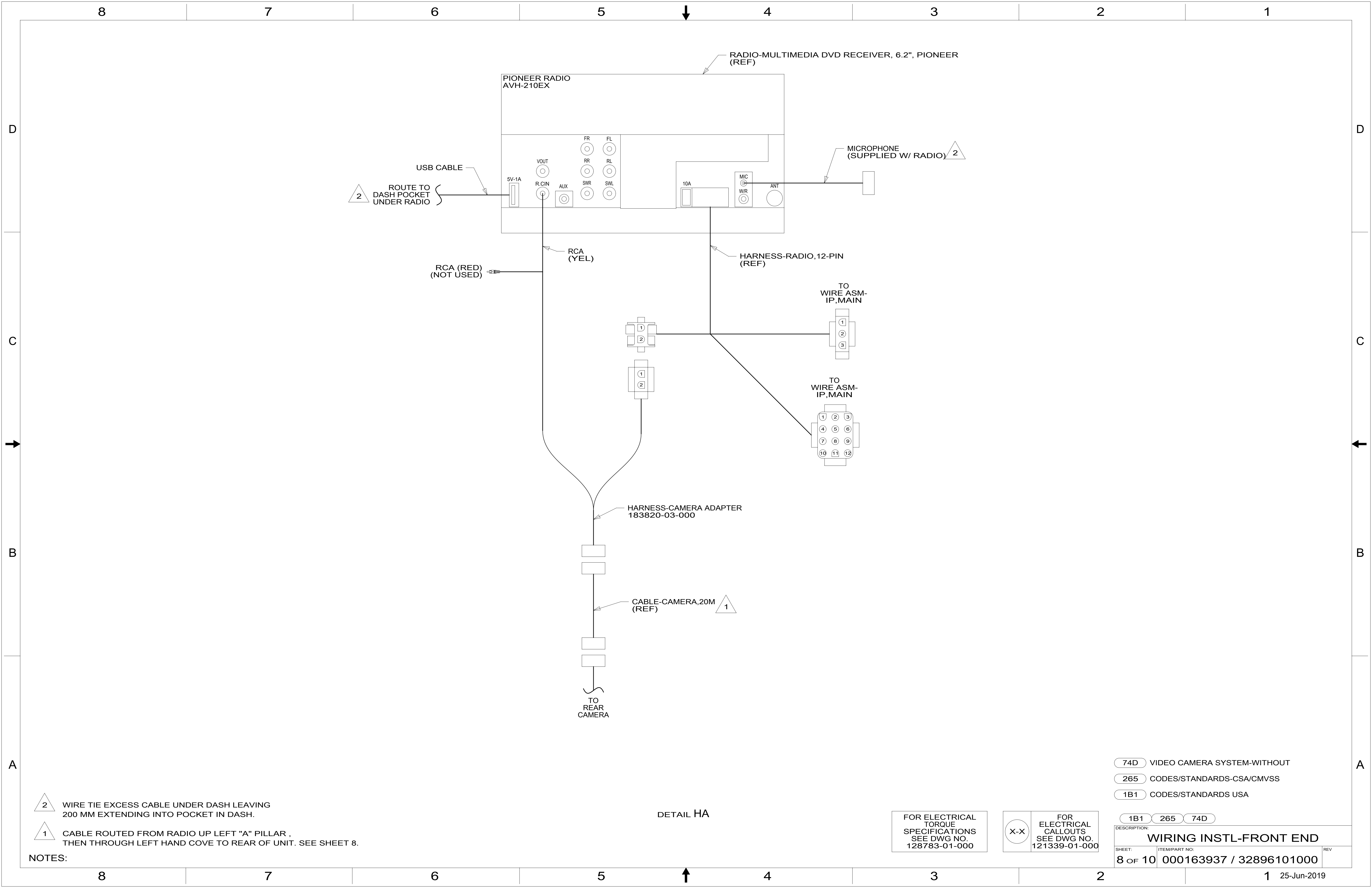
4

3

2

1

25-Jun-2019



2 WIRE TIE EXCESS CABLE UNDER DASH LEAVING 200 MM EXTENDING INTO POCKET IN DASH.

1 CABLE ROUTED FROM RADIO UP LEFT "A" PILLAR, THEN THROUGH LEFT HAND COVE TO REAR OF UNIT. SEE SHEET 8.

NOTES:

DETAIL HA

FOR ELECTRICAL TORQUE SPECIFICATIONS SEE DWG NO. 128783-01-000

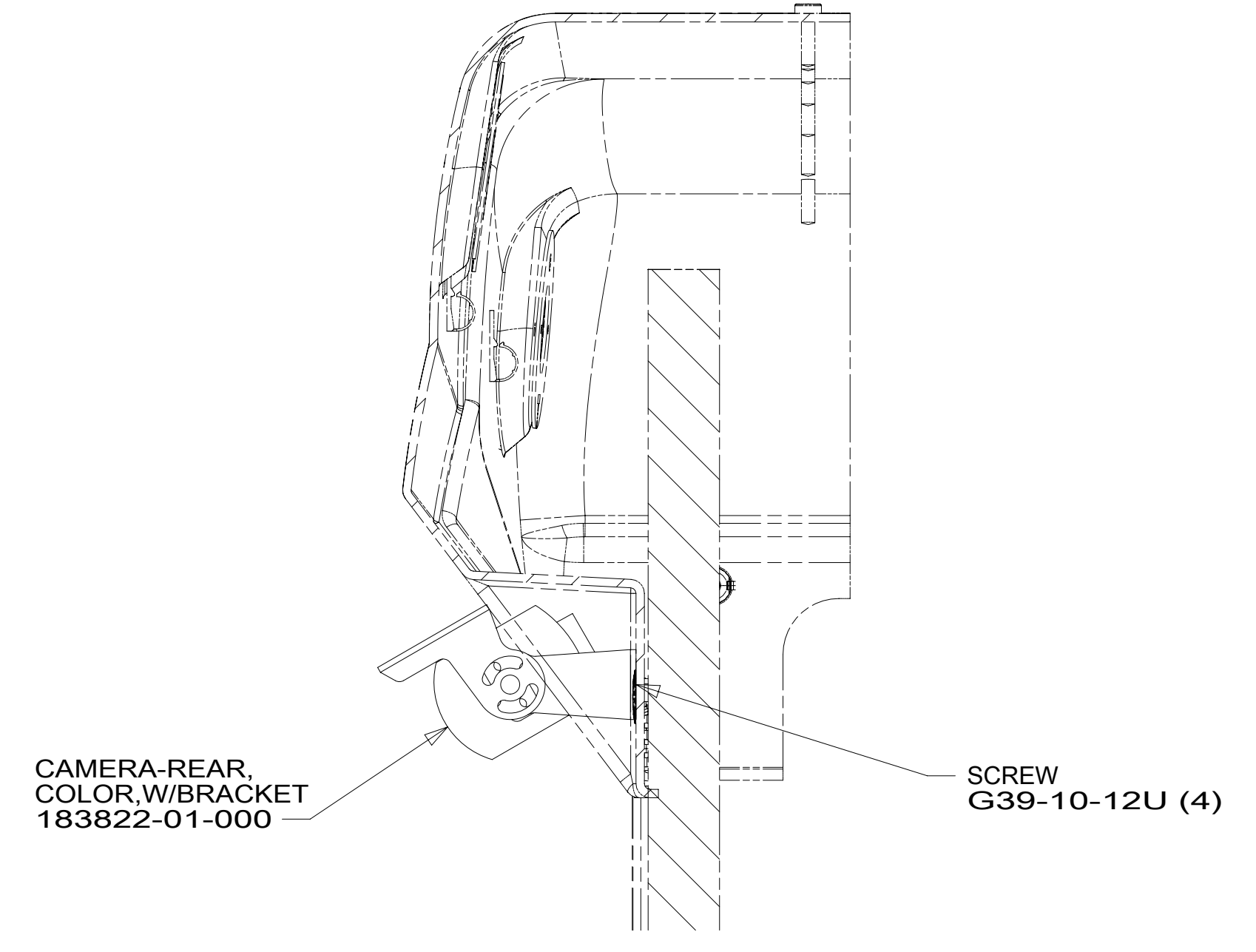
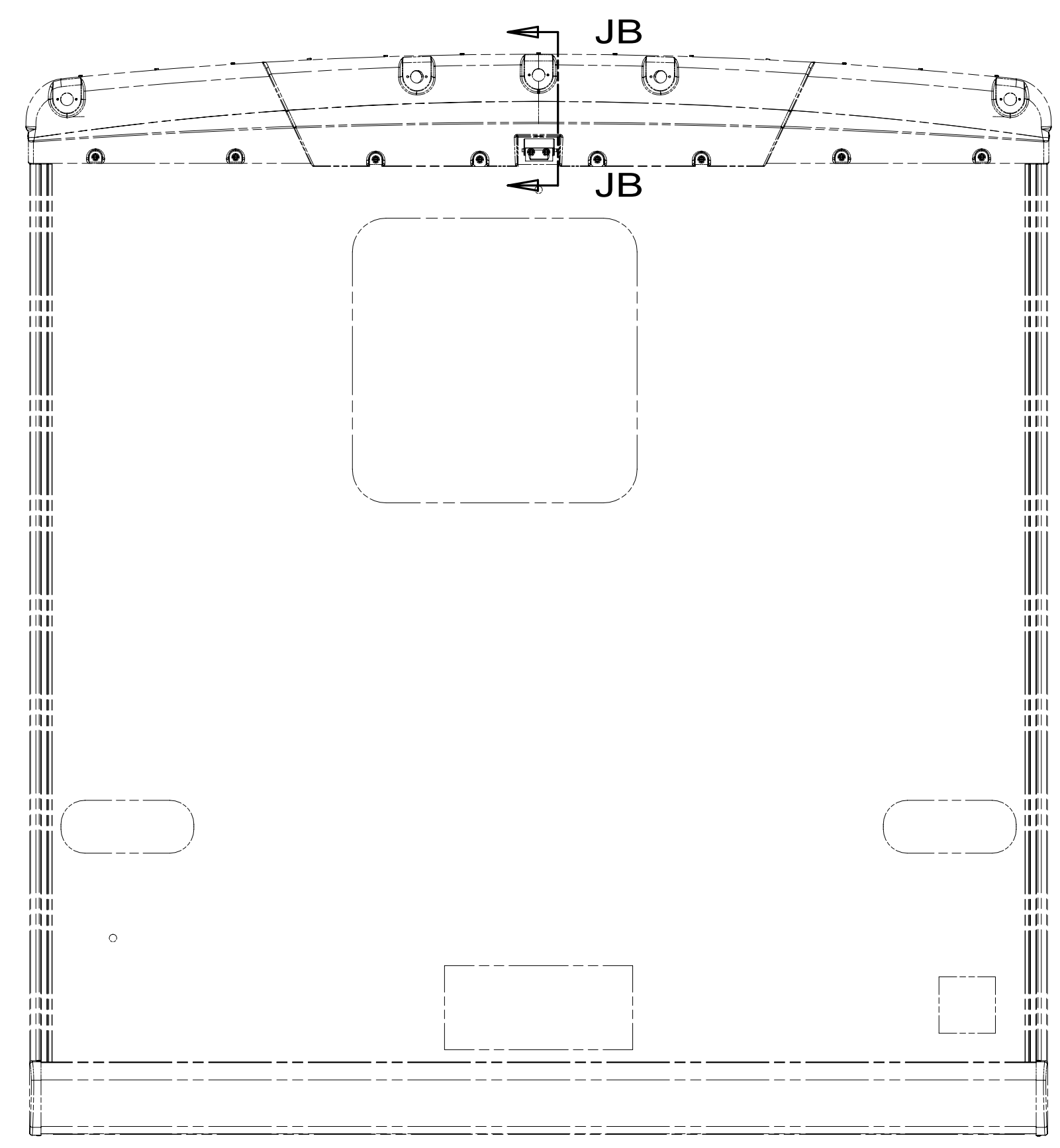
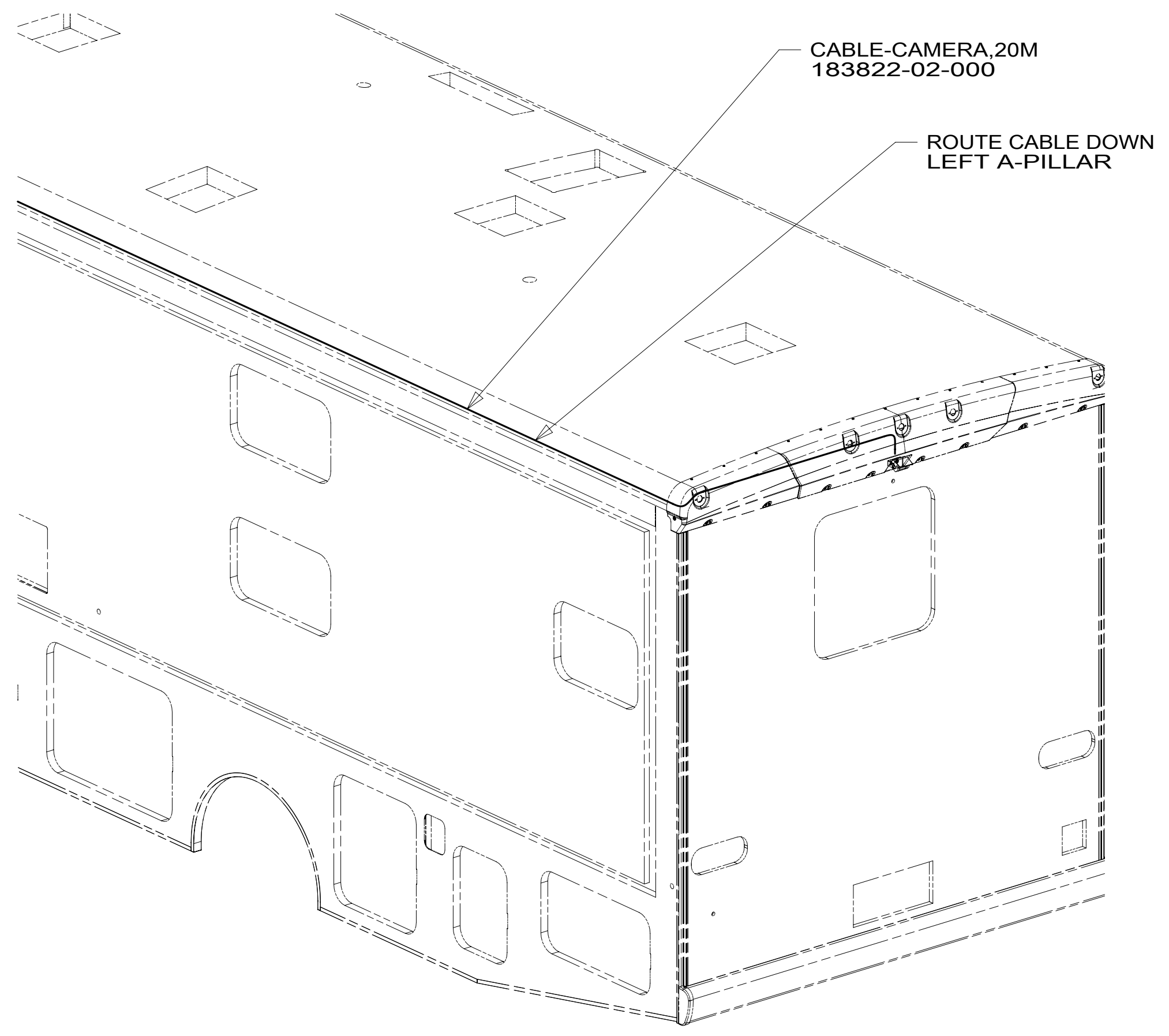
FOR ELECTRICAL CALLOUTS SEE DWG NO. 121339-01-000

- 74D VIDEO CAMERA SYSTEM-WITHOUT
- 265 CODES/STANDARDS-CSA/CMVSS
- 1B1 CODES/STANDARDS USA

DESCRIPTION:		
WIRING INSTL-FRONT END		
SHEET:	ITEM/PART NO:	REV:
8 OF 10	000163937 / 32896101000	

8 7 6 5 4 3 2 1

D
C
B
A



SECTION JB-JB

FOR ELECTRICAL
TORQUE
SPECIFICATIONS
SEE DWG NO.
128783-01-000

FOR
ELECTRICAL
CALLOUTS
SEE DWG NO.
121339-01-000

- 265 CODES/STANDARDS-CSA/CMVSS
- 1B1 CODES/STANDARDS USA

1B1 265

DESCRIPTION:
WIRING INSTL-FRONT END

SHEET: 9 OF 10 ITEM/PART NO: 000163937 / 32896101000 REV

8 7 6 5 4 3 2 1 25-Jun-2019

8 7 6 5 4 3 2 1

TIE-WIRE MOUNT
155366-01-000
TIE-WIRE
8343-01-000

CLAMP
10495-02-000 (4)
SCREW
G39-10-08U (4)

WIRE ASM-LOFT BED
00002921 / 310229-01-000

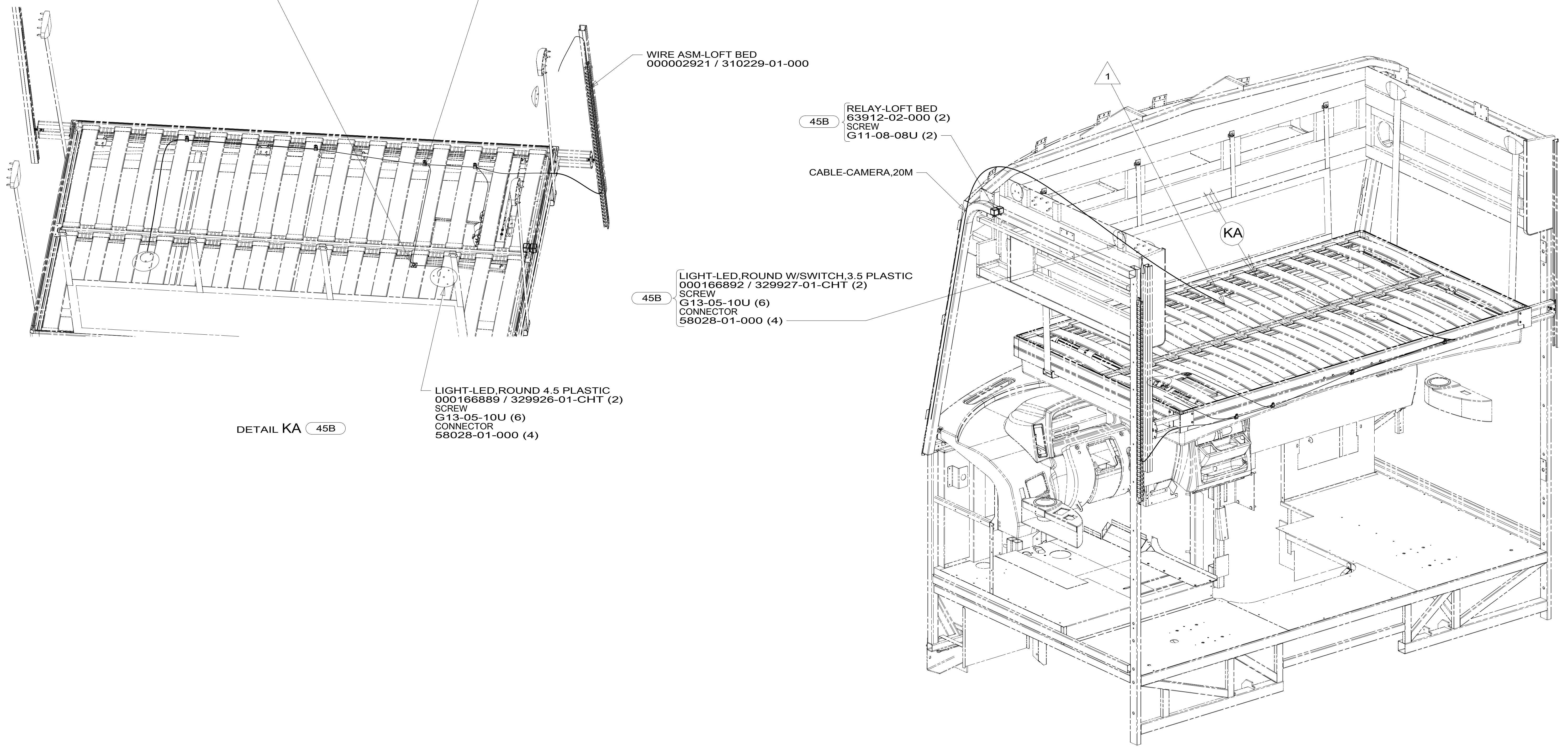
RELAY-LOFT BED
63912-02-000 (2)
SCREW
G11-08-08U (2)

CABLE-CAMERA,20M

LIGHT-LED,ROUND W/SWITCH,3.5 PLASTIC
000166892 / 329927-01-CHT (2)
SCREW
G13-05-10U (6)
CONNECTOR
58028-01-000 (4)

LIGHT-LED,ROUND 4.5 PLASTIC
000166889 / 329926-01-CHT (2)
SCREW
G13-05-10U (6)
CONNECTOR
58028-01-000 (4)

DETAIL KA 45B



- 45B LOFT BED
- 265 CODES/STANDARDS-CSA/CMVSS
- 1B1 CODES/STANDARDS USA

FOR ELECTRICAL TORQUE SPECIFICATIONS SEE DWG NO. 128783-01-000

FOR ELECTRICAL CALLOUTS SEE DWG NO. 121339-01-000

1B1 265

DESCRIPTION: WIRING INSTL-FRONT END

SHEET: 10 OF 10 ITEM/PART NO: 000163937 / 32896101000 REV

NOTES: 1 RUN CABLE THRU LEFT-HAND COVE TO REAR OF UNIT. SEE SHEET 8.

8 7 6 5 4 3 2 1 25-Jun-2019