

1 ATTACH TO STICK WORK USING BRACKETS AND SCREWS THAT COME WITH CONVERTER.

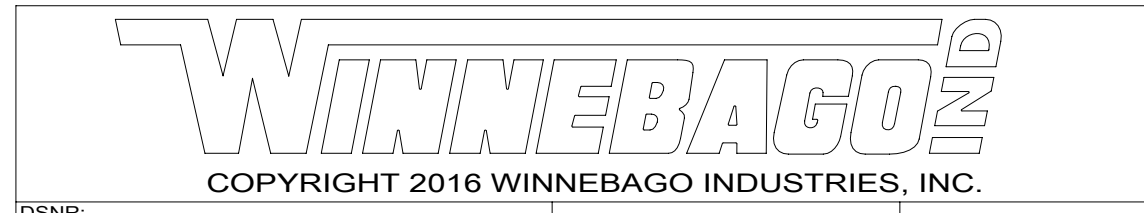
NOTES:

VIEW AB

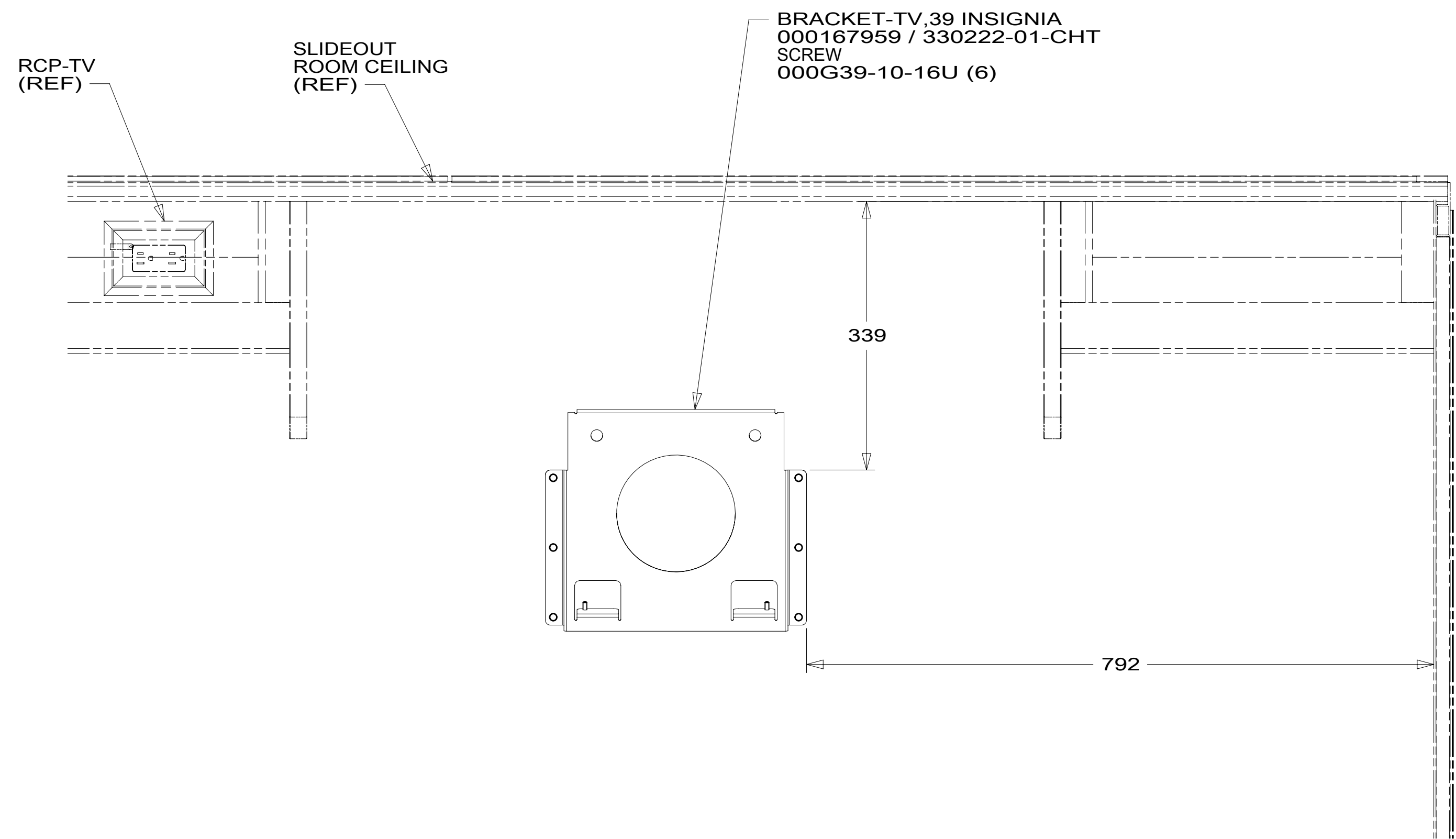
FOR ELECTRICAL TORQUE SPECIFICATIONS SEE DWG NO. 128783-01-000

FOR ELECTRICAL CALLOUTS SEE DWG NO. 121339-01-000

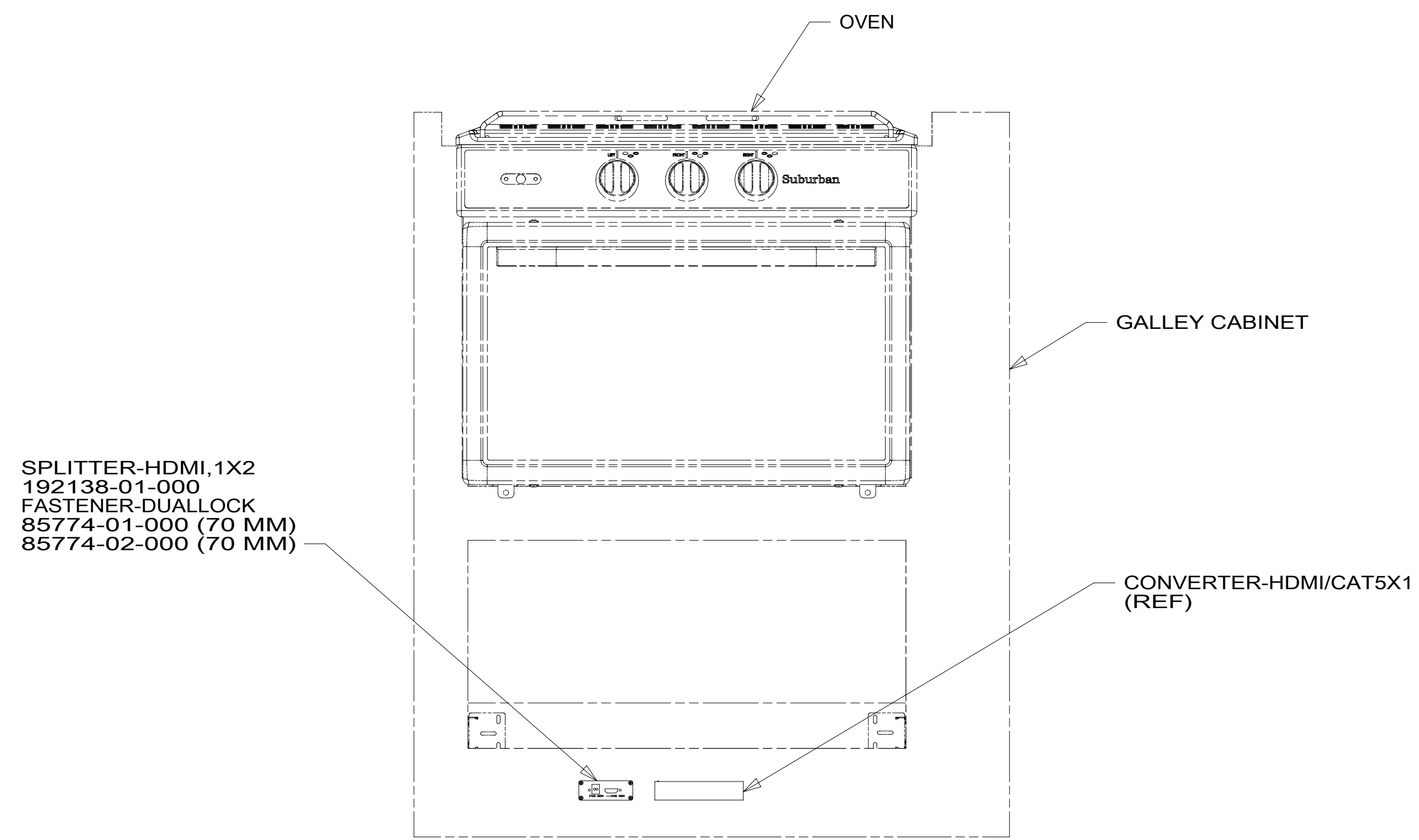
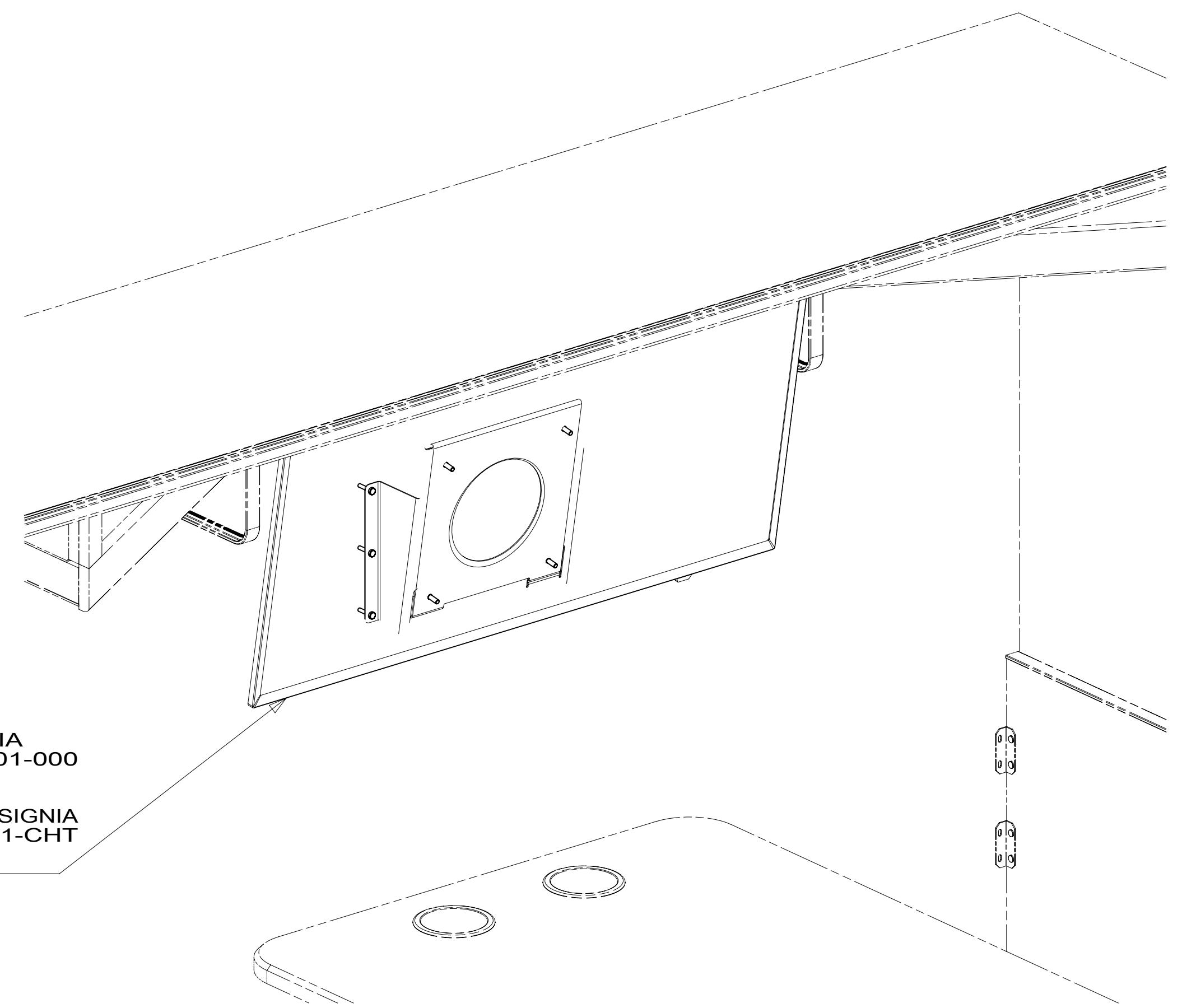
- 265 CODES/STANDARDS-CSA/CMVSS
- 1B1 CODES/STANDARDS USA
- 1B1 265



DSNR:		ALL DIMENSIONS ARE IN MILLIMETERS	
DFFR:		MATERIAL:	
UNSPECIFIED TOLERANCES:			
WHOLE DIM (X)	: 3		
ONE-PLACE (X.X)	: 1.5		
TWO-PLACE (X.XX)	: 0.50		
ANGLE	: 1°		
REFER TO ES0018 FOR FASTENER TIGHTENING GUIDELINES		WEIGHT: (LBS)	FIRST USED:
			19 E31BE
DESCRIPTION: WIRING INSTL-TV/DVD			
SHEET:	ITEM/PART NO.:	REV:	
1 OF 5	000163935 / 32895901000		
REF:		1 20-Jun-2019	



VIEW BA
(TV NOT SHOWN)



265 CODES/STANDARDS-CSA/CMVSS

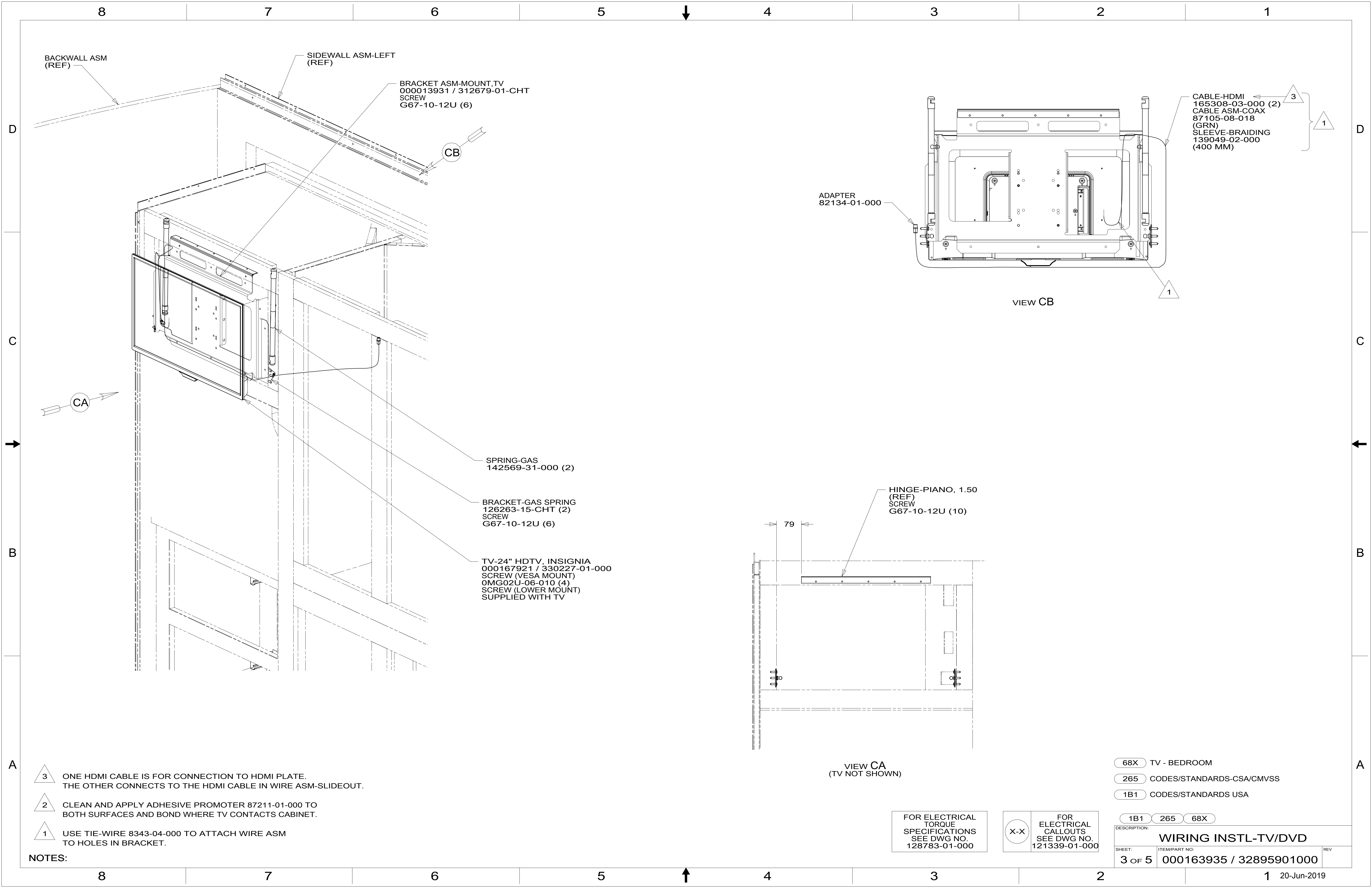
1B1 CODES/STANDARDS USA

1B1 265

FOR ELECTRICAL TORQUE SPECIFICATIONS SEE DWG NO. 128783-01-000

FOR ELECTRICAL CALLOUTS SEE DWG NO. 121339-01-000

DESCRIPTION: WIRING INSTL-TV/DVD		
SHEET: 2 OF 5	ITEM/PART NO: 000163935 / 32895901000	REV



BACKWALL ASM (REF)
 SIDEWALL ASM-LEFT (REF)
 BRACKET ASM-MOUNT-TV
 000013931 / 312679-01-CHT
 SCREW
 G67-10-12U (6)

CB

CABLE-HDMI
 165308-03-000 (2)
 CABLE ASM-COAX
 87105-08-018 (GRN)
 SLEEVE-BRAIDING
 139049-02-000 (400 MM)

ADAPTER
 82134-01-000

VIEW CB

CA

SPRING-GAS
 142569-31-000 (2)

BRACKET-GAS SPRING
 126263-15-CHT (2)
 SCREW
 G67-10-12U (6)

TV-24" HDTV, INSIGNIA
 000167921 / 330227-01-000
 SCREW (VESA MOUNT)
 OMG02U-06-010 (4)
 SCREW (LOWER MOUNT)
 SUPPLIED WITH TV

HINGE-PIANO, 1.50 (REF)
 SCREW
 G67-10-12U (10)

79

VIEW CA
 (TV NOT SHOWN)

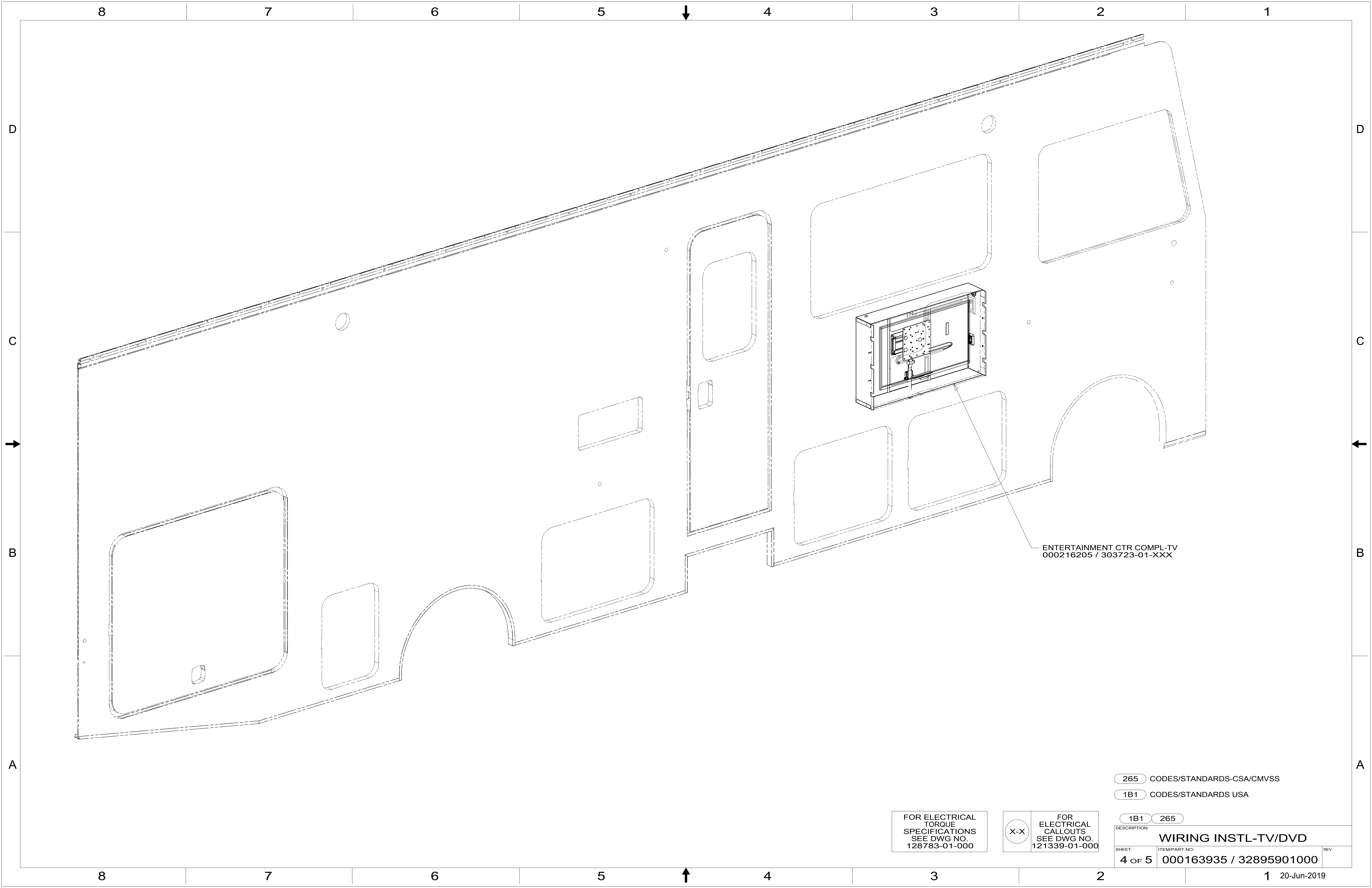
- NOTES:
- 3 ONE HDMI CABLE IS FOR CONNECTION TO HDMI PLATE. THE OTHER CONNECTS TO THE HDMI CABLE IN WIRE ASM-SLIDEOUT.
 - 2 CLEAN AND APPLY ADHESIVE PROMOTER 87211-01-000 TO BOTH SURFACES AND BOND WHERE TV CONTACTS CABINET.
 - 1 USE TIE-WIRE 8343-04-000 TO ATTACH WIRE ASM TO HOLES IN BRACKET.

- 68X TV - BEDROOM
- 265 CODES/STANDARDS-CSA/CMVSS
- 1B1 CODES/STANDARDS USA

FOR ELECTRICAL TORQUE SPECIFICATIONS SEE DWG NO. 128783-01-000

FOR ELECTRICAL CALLOUTS SEE DWG NO. 121339-01-000

DESCRIPTION:	1B1 265 68X	
WIRING INSTL-TV/DVD		
SHEET:	ITEM/PART NO:	REV
3 OF 5	000163935 / 32895901000	



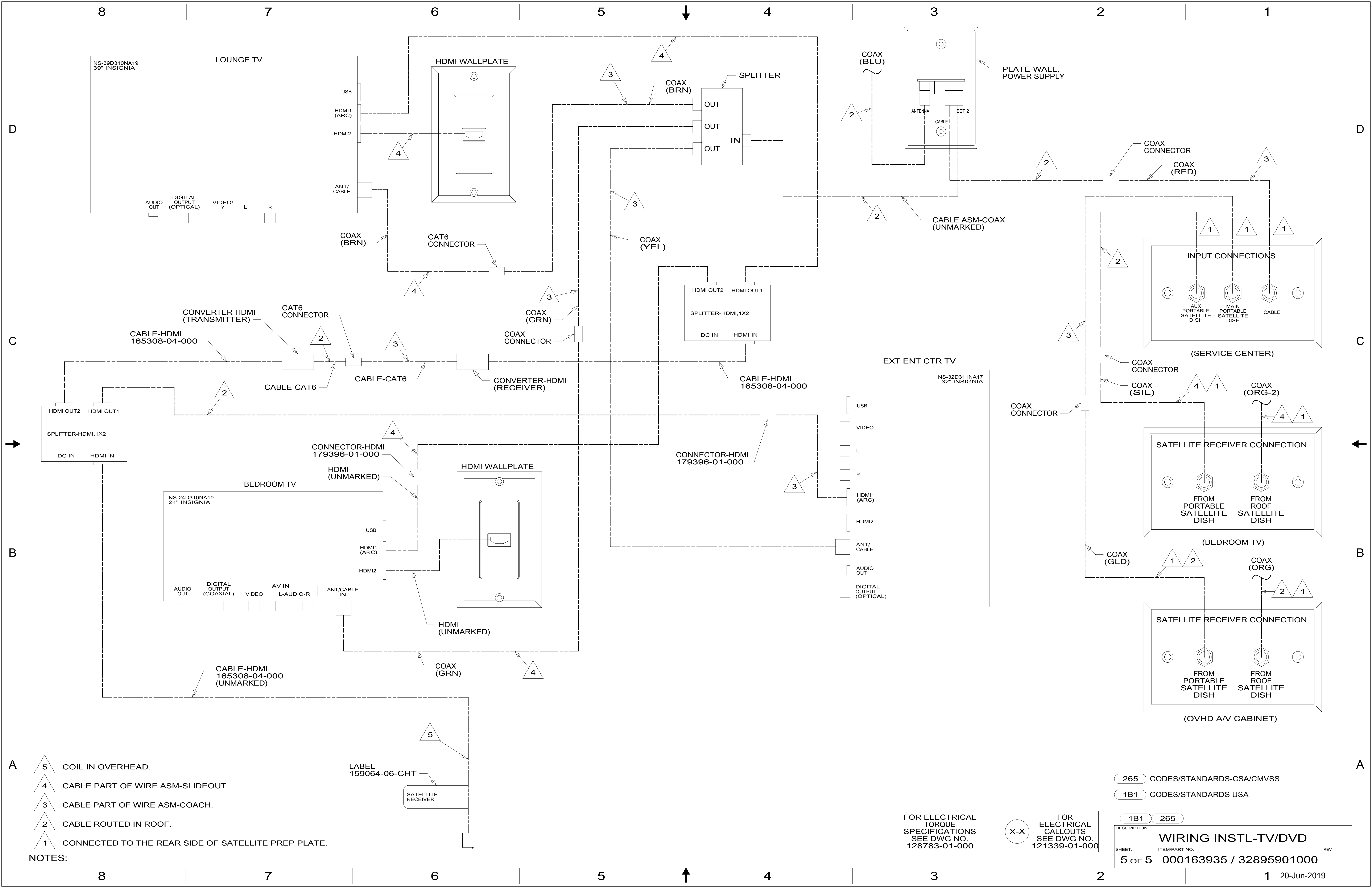
ENTERTAINMENT CTR COMPL-TV
000216205 / 303723-01-XXX

FOR ELECTRICAL
TORQUE
SPECIFICATIONS
SEE DWG NO.
128783-01-000

FOR
ELECTRICAL
CALLOUTS
SEE DWG NO.
121339-01-000

- 265 CODES/STANDARDS-CSA/CMVSS
- 1B1 CODES/STANDARDS USA

DESCRIPTION:		1B1	265
WIRING INSTL-TV/DVD			
SHEET:	ITEM/PART NO.:	REV	
4 OF 5	000163935 / 32895901000		



- NOTES:
- 5 COIL IN OVERHEAD.
 - 4 CABLE PART OF WIRE ASM-SLIDEOUT.
 - 3 CABLE PART OF WIRE ASM-COACH.
 - 2 CABLE ROUTED IN ROOF.
 - 1 CONNECTED TO THE REAR SIDE OF SATELLITE PREP PLATE.

LABEL
159064-06-CHT
SATELLITE RECEIVER

FOR ELECTRICAL TORQUE SPECIFICATIONS SEE DWG NO. 128783-01-000

FOR ELECTRICAL CALLOUTS SEE DWG NO. 121339-01-000

- 265 CODES/STANDARDS-CSA/CMVSS
- 1B1 CODES/STANDARDS USA

DESCRIPTION: **WIRING INSTL-TV/DVD**
 SHEET: 5 OF 5 ITEM/PART NO.: 000163935 / 32895901000 REV: 1
 20-Jun-2019